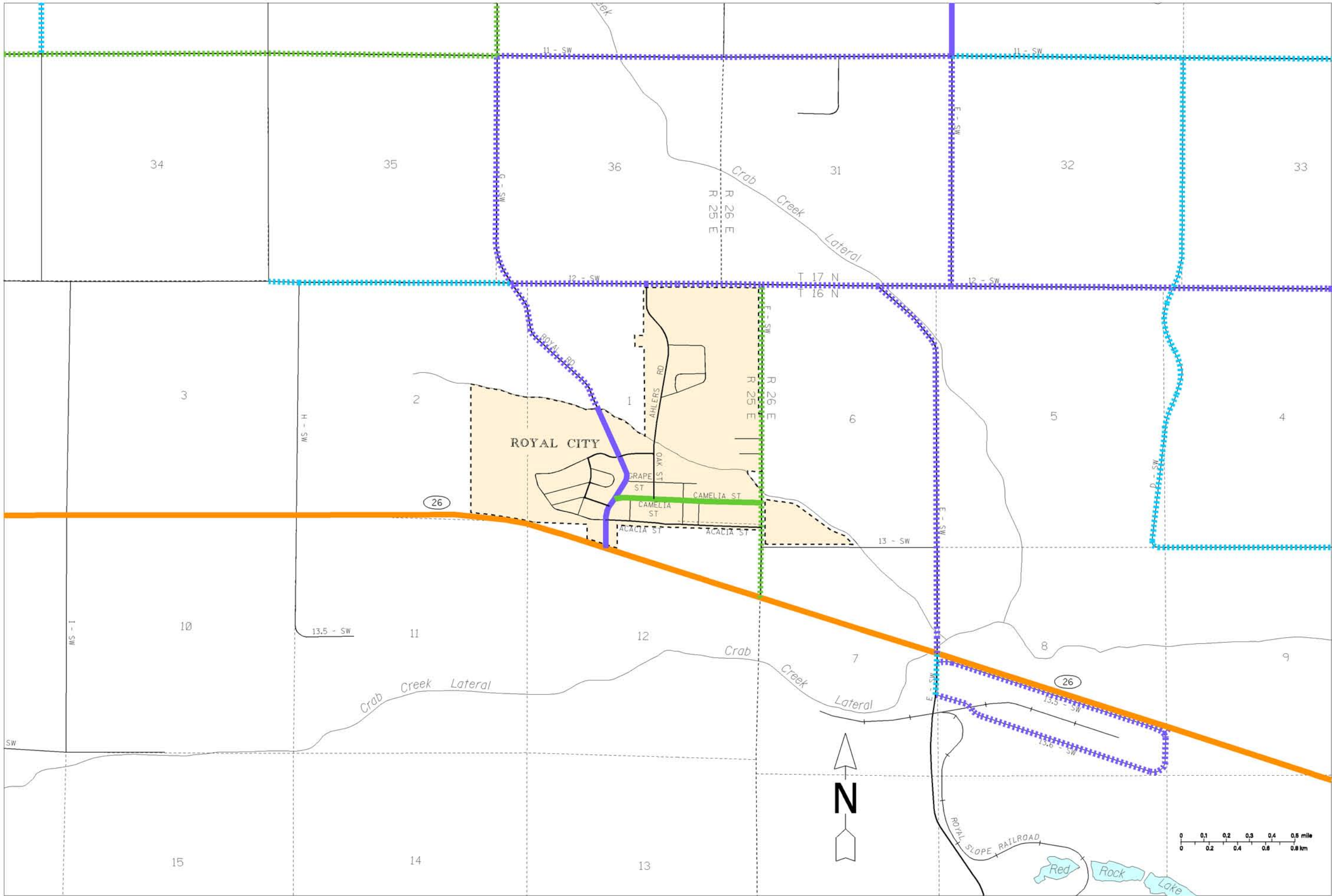


PLOT DATE: 30-NOV-2007



### Freight and Goods Transportation System

#### Roadways 2007

WASHINGTON STATE DEPARTMENT OF TRANSPORTATION

TONNAGE CLASS  
T1 - T5  
ANNUAL TONS  
(in thousands)



ROYAL CITY  
GRANT COUNTY