

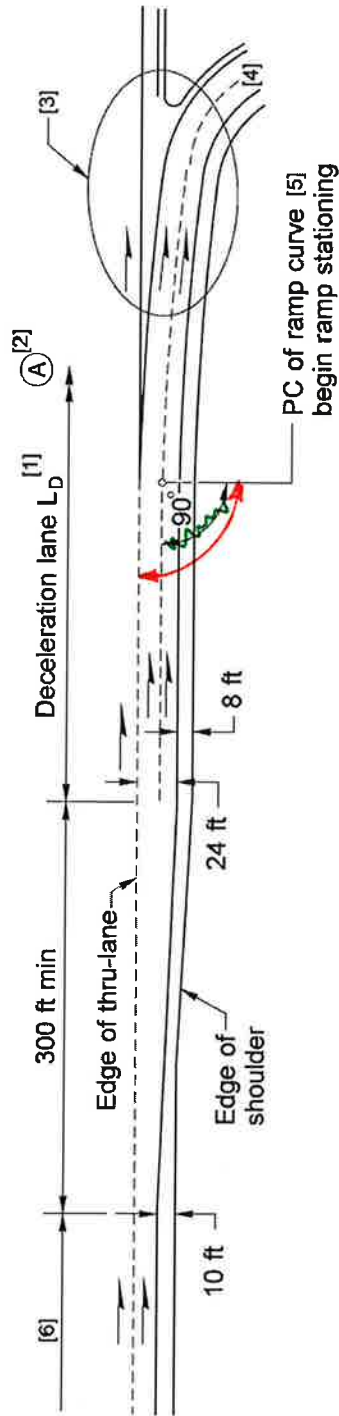
Notes:

- [1] For deceleration lane length L_D , see Exhibit 1360-10.
- [2] Point \odot is the point controlling the ramp design speed.
- [3] For gore details, see Exhibit 1360-11b.
- [4] For ramp lane and shoulder widths, see Exhibit 1360-6.
- [5] Approximate angle to establish ramp alignment.
- [6] Lane to be dropped or auxiliary lane with a minimum length of 1,500 ft with a 300-ft taper.

General:

For striping, see the *Standard Plans*.

Off-Connection: Two-Lane, Tapered
 Exhibit 1360-14d



Notes:

- [1] For deceleration lane length L_D , see Exhibit 1360-10.
- [2] Point A is the point controlling the ramp design speed.
- [3] For gore details, see Exhibit 1360-11b.
- [4] For ramp lane and shoulder widths, see Exhibit 1360-6.
- [5] Ramp stationing may be extended to accommodate superelevation transition.
- [6] Lane to be dropped or auxiliary lane with a minimum length of 1,500 ft with a 300-ft taper.

General:

For striping, see the *Standard Plans*.

Off-Connection: Two-Lane, Parallel
 Exhibit 1360-14e