



# SR 515: SE 192<sup>nd</sup> to Benson Road Improvements

## When Will Work on SR 515 Begin?

Last time we contacted businesses in the area about this project we were planning to start construction in the summer of 2007. Due to challenges with relocating utilities in the area we are altering the project's design and now expect work to begin in spring 2008 and finish in summer 2008.

## What Improvements Are Planned for SR 515?

- WSDOT will repave SR 515 between SE 192<sup>nd</sup> to Benson Road.
- Crews will install a raised traffic island and curbing in the existing two-way left-turn lane between SE 180<sup>th</sup> Street and SE 176<sup>th</sup> Street.
- A U-turn, at Carr Road, will provide drivers with access to driveways on the opposite side of the roadway in addition to the U-turn at S 180<sup>th</sup> constructed by the King County Fire District.
- We will widen the roadway at Carr Road and re-time signals to accommodate the U-turn.
- A designated left turn pocket will allow drivers left turn access to the North Benson Center.

## Why is WSDOT Improving SR 515?

Safety is our top priority. Collision data for this section of SR 515 shows more collisions than would be expected from a highway with similar traffic volumes. As a result, WSDOT needs to reduce the number of left turns drivers can make while traveling on SR 515 and reduce the number of driveways. These changes will reduce the risk of collisions. Similar projects such as the raised traffic island installed by the city of Kent near Washington Avenue (SR 181) and SR 516 have decreased collisions by 30 percent. Resurfacing will give drivers a smoother ride and preserve the roadway. These improvements will increase safety for drivers accessing area businesses and driving on SR 515.

## What can I expect during construction?

Repaving will require some nighttime single lane closures. Crews will provide reasonable access to all business driveways during construction. Also there will be some single lane closures during daytime hours typically between 8 a.m. and 2 p.m.

## Where is the Project Located?



## Where Can You Find More Information?

Visit WSDOT's project website

[www.wsdot.wa.gov/projects/SR515/SE192ndBensonRoadAccess/](http://www.wsdot.wa.gov/projects/SR515/SE192ndBensonRoadAccess/)

### Contact the Project office

Project Engineer: Paul E. Johnson  
6431 Corson Avenue South  
Seattle, WA 98108  
Email: [johnspa@wsdot.wa.gov](mailto:johnspa@wsdot.wa.gov)  
Phone: (205) 768-5680

### Contact WSDOT Communications

Lauren Penning  
Email: [pennila@wsdot.wa.gov](mailto:pennila@wsdot.wa.gov)  
Phone: (206) 440-4473

“ Washington's Future Just Got Better”

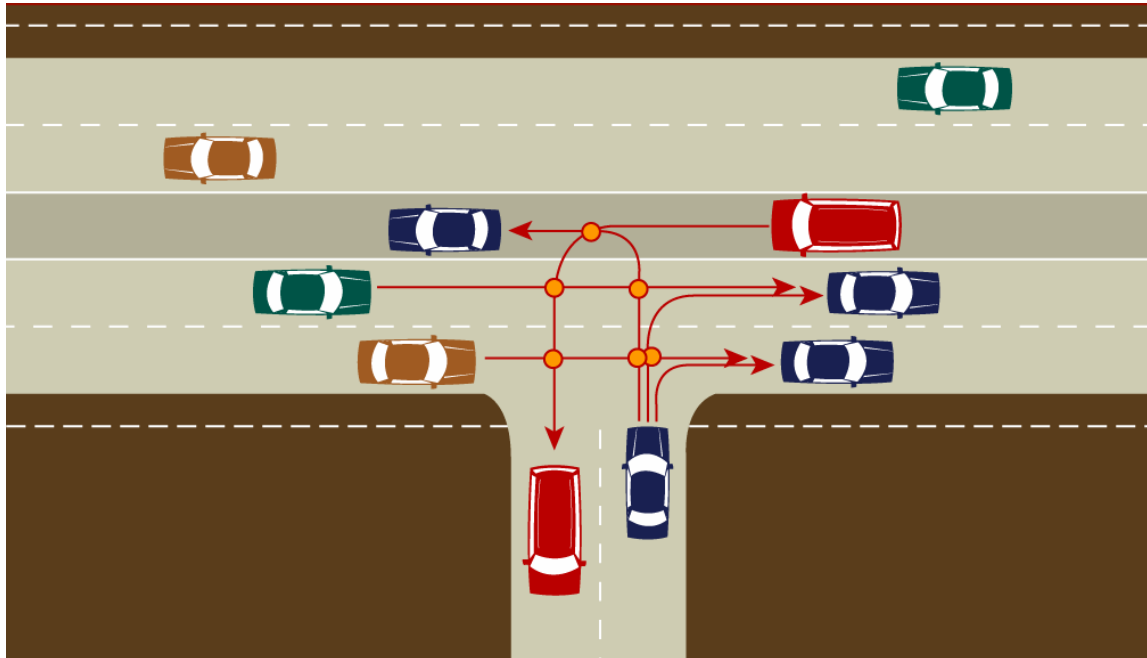
**MAKING EVERY  
DOLLAR COUNT.**

Funded in part by the 2005 Transportation Partnership Project Program.

## SR 515: SE 192<sup>nd</sup> to Benson Road Improvements

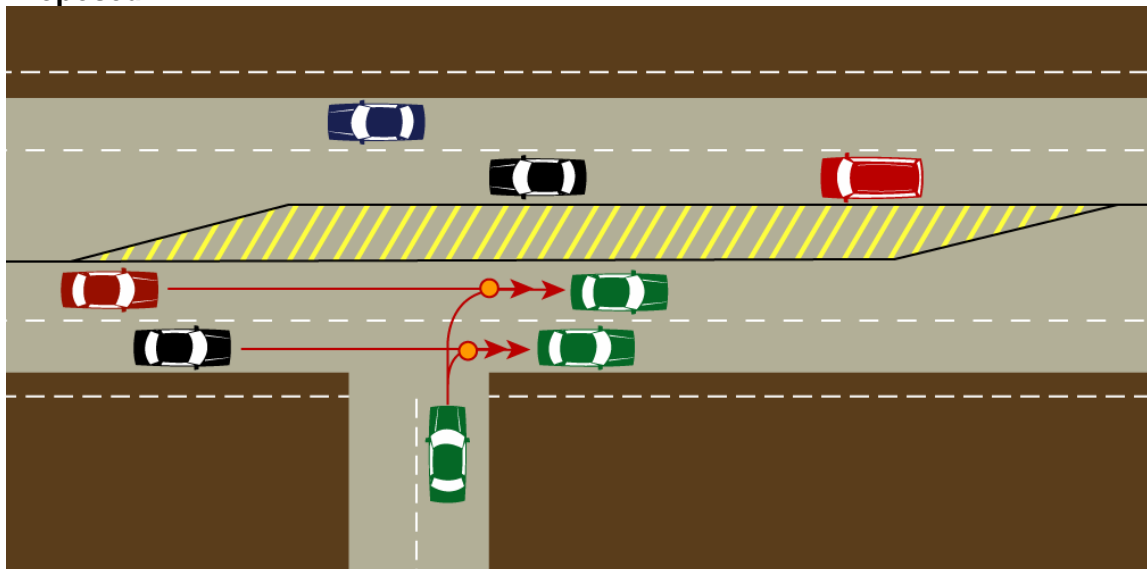
Drivers making left turn movements from driveways to cross the left center turn lane and merge into traffic cause the majority of the collisions along SR 515.

### Current



Currently, a driver turning out of a driveway adjacent to State Route 515 has several potential ways to collide with oncoming traffic and has to concentrate on vehicles coming from both directions.

### Proposed



After a center median is installed drivers will only have two potential ways to collide with oncoming traffic and will only have to concentrate on traffic coming from one direction, creating a safer more efficient highway. The left turn movements will be replaced with the u-turns at SE 180<sup>th</sup> and SE 176<sup>th</sup> streets.