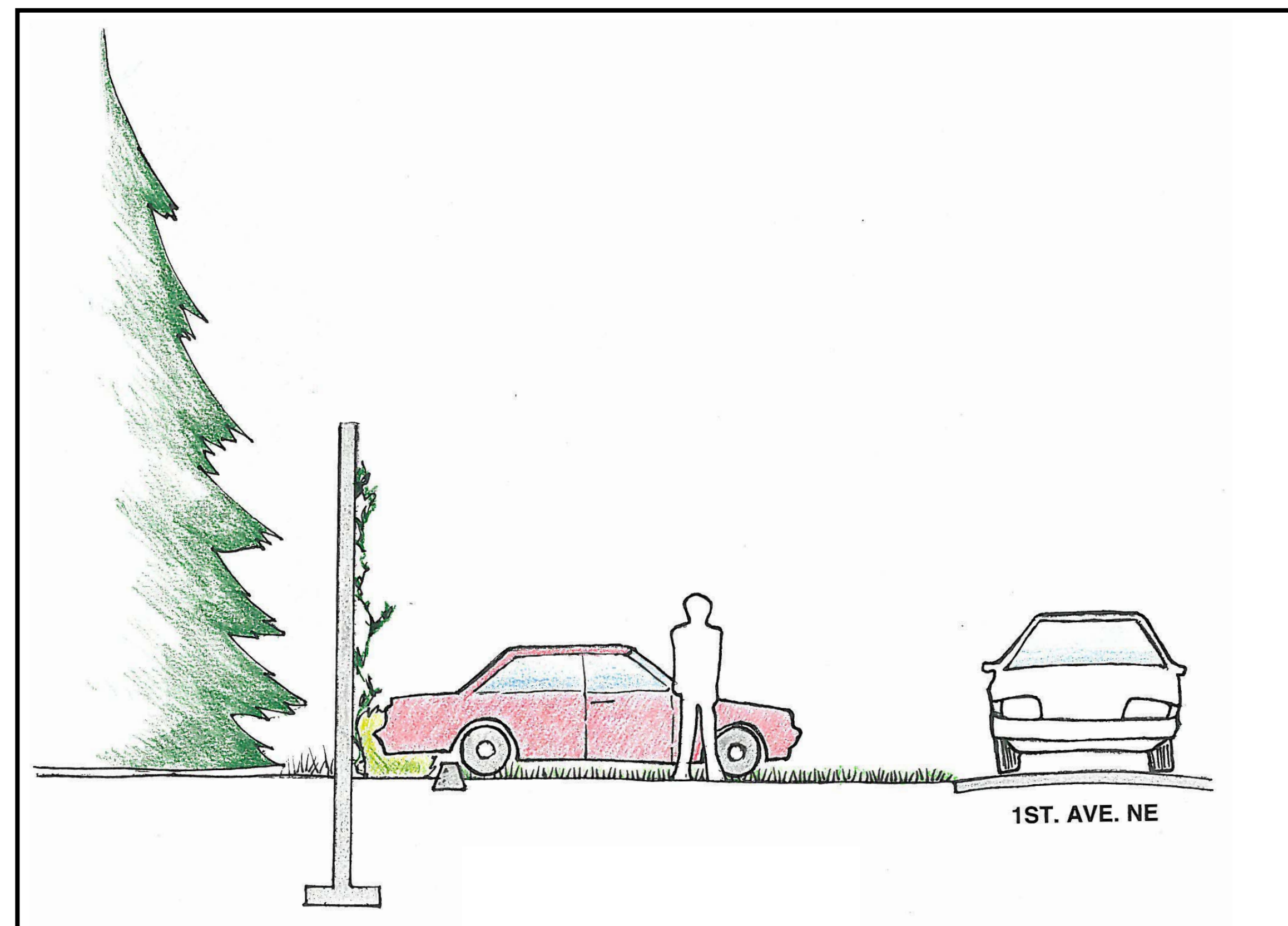


I-5 / 5th Avenue NE to NE 92nd Street Noise Wall Project

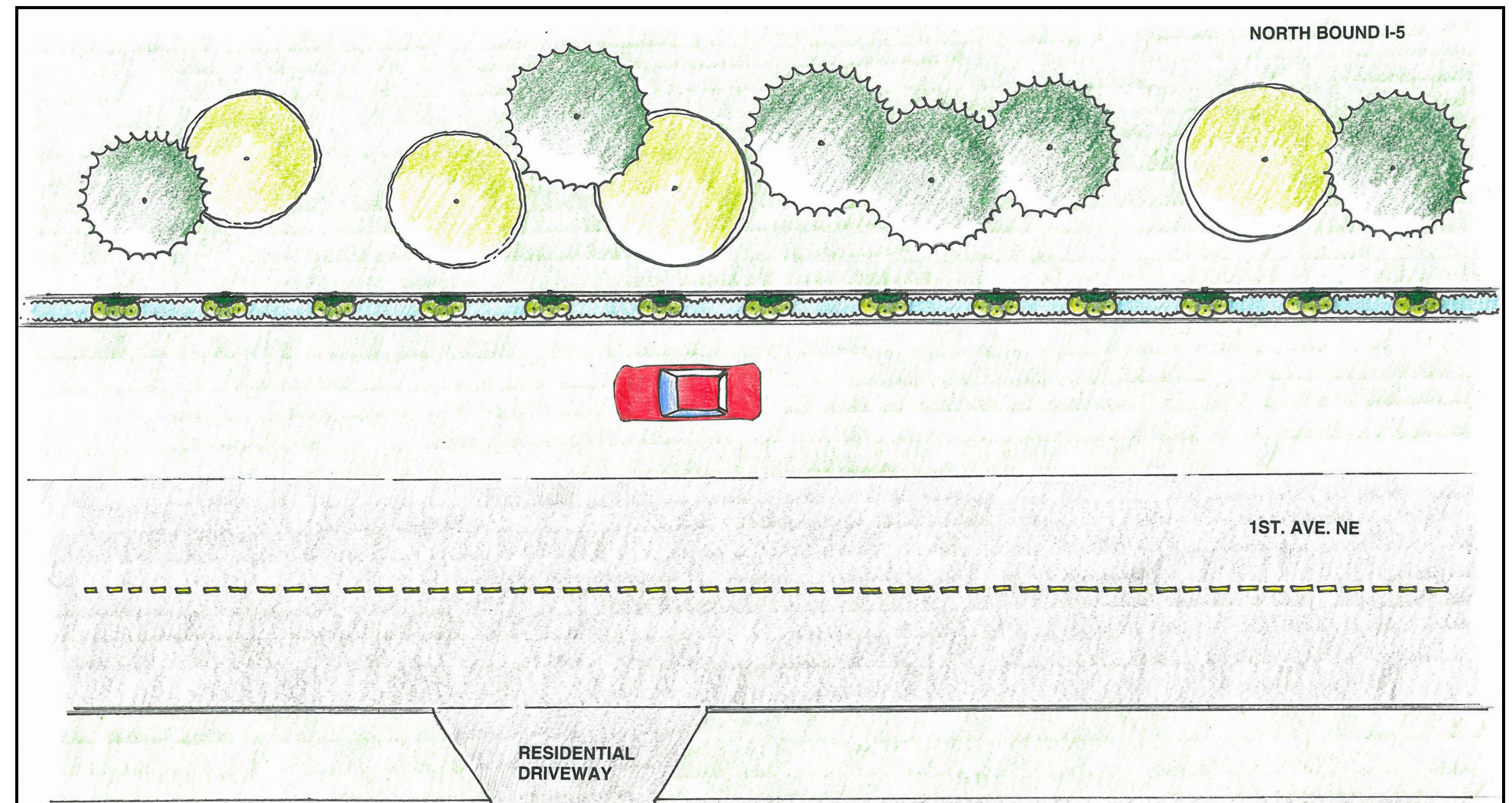


Wall 1-North: Landscaping Considerations

- Parking configurations.
- Space available for planting.
- Long-term landscaping maintenance.



Existing parking configuration could result in damage to the landscaping or noise wall.



A parallel parking configuration could eliminate potential risk of damage to landscaping and noise wall.