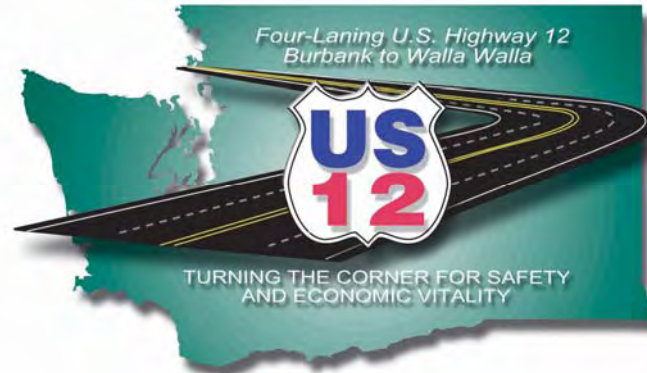


# Port of Walla Walla

## *Transportation Planning Symposium*



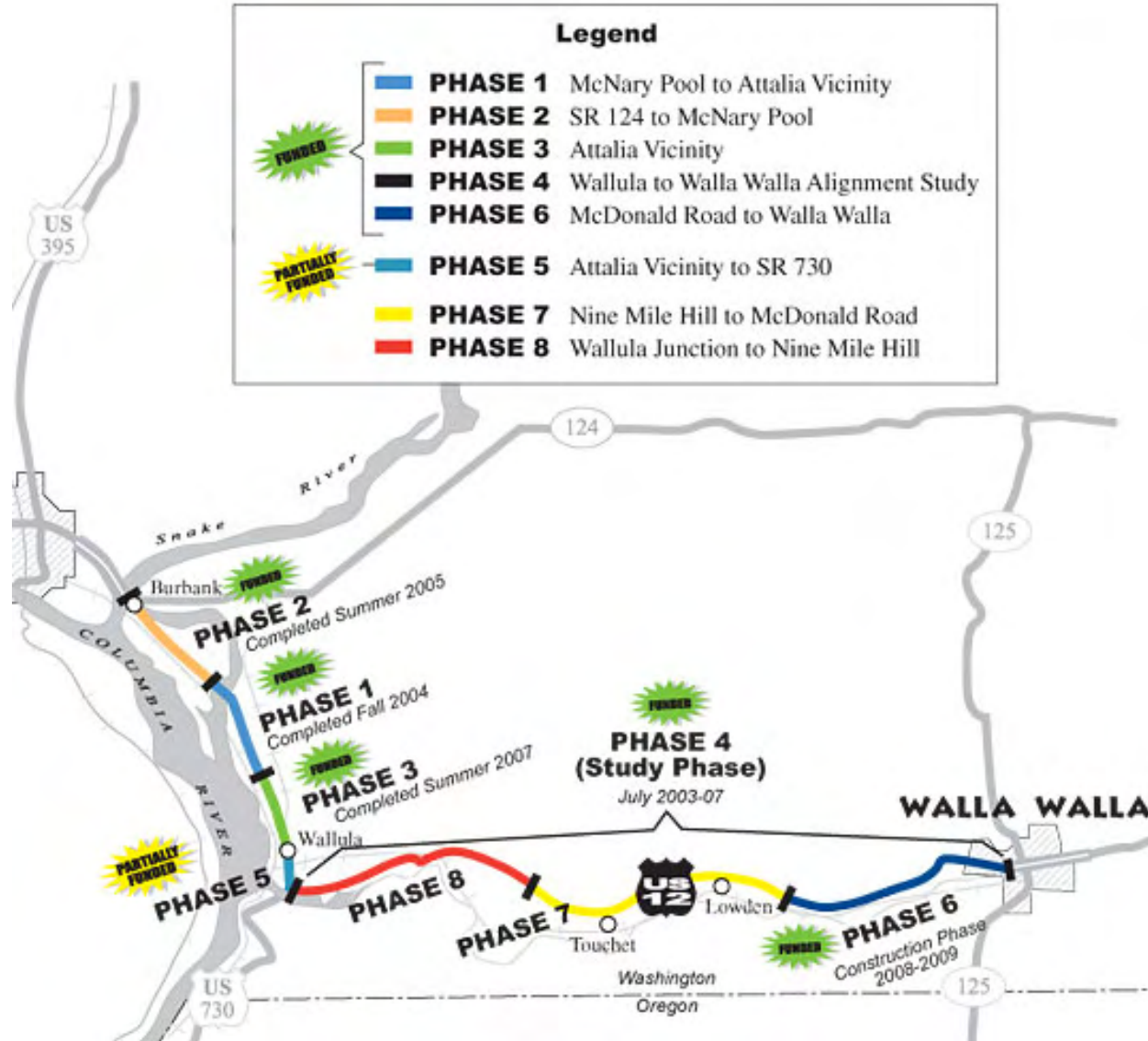
## *Port of Walla Walla U.S. Highway 12*

*November 15, 2007*

# Four Laning U.S. Highway 12

- On August 20, 2001 a group of public and private interests met to chart a new comprehensive strategy to advance Walla Walla Valley's long sought after goal of four-laning U.S. Highway 12 from Burbank, Washington to Walla Walla, Washington.
- The Coalition made a commitment that the four-laning of U.S. Highway 12 would remain Walla Walla County's top priority transportation project until completed.
- The Coalition developed comprehensive marketing materials to articulate the safety and economic development justification for four-laning U.S. Highway 12.
- The Coalition hired a Federal Lobbyist to work with our congressional delegation as critical transportation authorization and appropriation bills make their way through Congress.

# Four Laning U.S. Highway 12



# Four Laning U.S. Highway 12 Phase 1

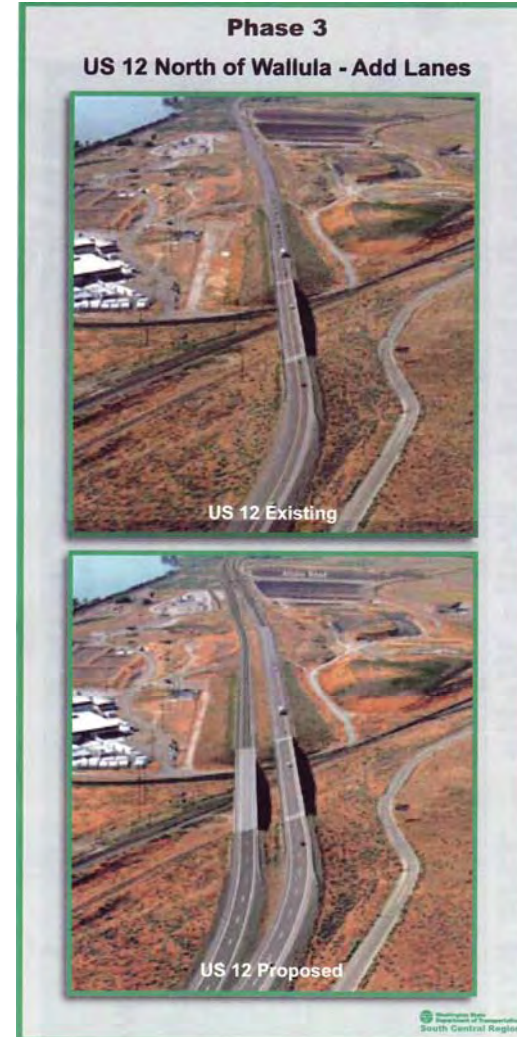
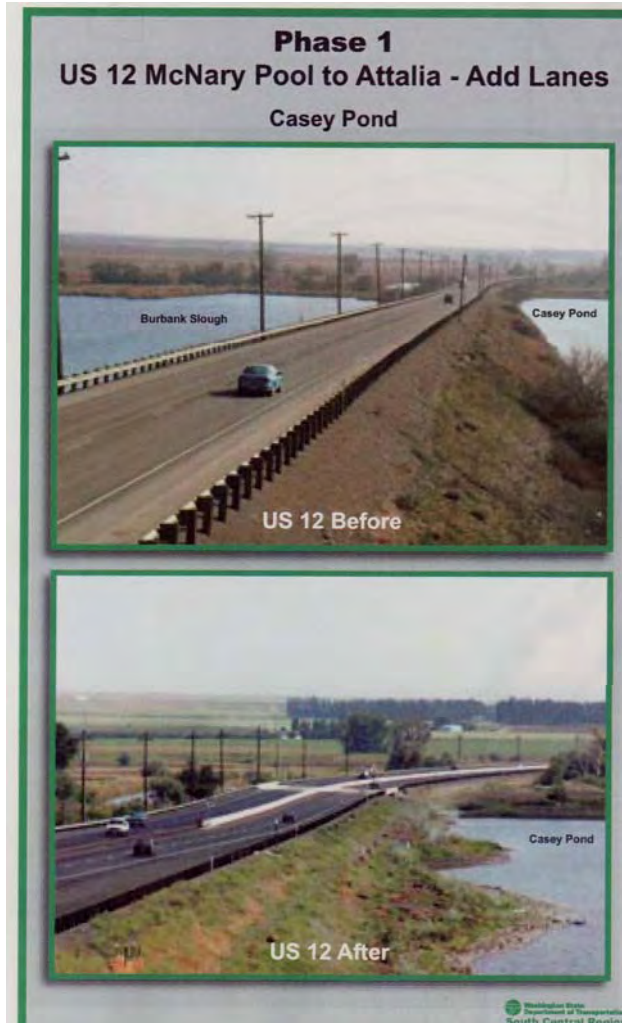


# Four Laning U.S. Highway 12 Phase 3



# Four Laning U.S. Highway 12

## Illustration of Four-Lane Expansion for Phases 1 & 3



# Four Laning U.S. Highway 12 “Keys to Success”

---

- **Must be able to clearly articulate the need. The U.S. Highway 12 Coalition developed the theme “For Safety & Economic Vitality”.**
- **A straight forward map showing the proposed improvements.**
- **Coalition must be a public/private sector partnership.**
- **Realistic project phasing that is fundable at a state and federal level.**
- **If federal funding is needed, a federal affairs representative is important. An effective Coalition needs to have yearly appropriation goals.**
- **Successful Coalition’s have a point person/leader. Coalitions by committee are not as effective.**

# Four Laning U.S. Highway 12 “Keys to Success”

---

- It is important to celebrate successes.
- When do you know you have a successful Coalition?
  - ❖ When your congressional delegation knows the goals of your Coalition.
  - ❖ When congressional staff knows the current phase you are working on and your current appropriation request amount.
  - ❖ When your congressional delegation uses your Coalition as an example of prioritizing community transportation projects.
  - ❖ When your state legislative delegation clearly understands the goal of the Coalition.
  - ❖ When your state representatives understand how critical it is to obtain resources to accomplish the next phase.

# Four Laning U.S. Highway 12

## U.S. Highway 12 Coalition recent progress:

- **Federal Transportation Efficiency Act appropriation of \$5.9 million.**
- **State Transportation Revenue Package includes \$56 million for U.S. Highway 12 projects and \$4.22 million Myra Road extension.**
- **U.S. Highway 12 Coalition produces brochure highlighting transportation projects at risk if Initiative 912 is approved in the November 8th election.**



# Four Laning U.S. Highway 12

## Initiative 912 puts **\$60.23 million** in highway projects for Walla Walla County at risk!

The 2005 Washington State Transportation Revenue Package has funded vital U.S. Highway 12 and Myra Road improvement projects in Walla Walla County. **Approved funding for this work will be lost if Initiative 912, repealing the 9.5 cents gas tax, is approved in the November 8, 2005 election.**



### Four-laning U.S. Highway 12 from Burbank to Walla Walla For Safety and Economic Vitality

- Legend**
- **PHASE 1** McNary Pool to Attalia Vicinity
  - **PHASE 2** SR 124 to McNary Pool
  - **PHASE 3** Attalia Vicinity
  - **PHASE 4** Wallula to Walla Walla Alignment Study
  - **PHASE 5** Attalia Vicinity to SR 730
  - **PHASE 6** McDonald Road to Walla Walla
  - **PHASE 7** Nine Mile Hill to McDonald Road
  - **PHASE 8** Wallula Junction to Nine Mile Hill
- PHASES 1 THROUGH 5** were funded by a 5-cent gas tax approved in 2003

- 2005 Washington State Transportation Revenue Package**
- Gas tax finances state and local highway projects
    - 3-cents / July 1, 2005 (1/2 cent to locals)
    - 3-cents / July 1, 2006 (1/2 cent to locals)
    - 2-cents / July 1, 2007
    - 1.5-cents / July 1, 2008
  - Weight fees fund multi-modal projects
    - Typical sedan - \$10 / year

**FOR WALLA WALLA COUNTY - A POSITIVE RETURN ON INVESTMENT.** According to the Washington State Department of Transportation projections, for every \$1 contributed by Walla Walla County residents from 2006 to 2015, \$1.16 will be returned to state, city and county transportation projects in Walla Walla County.



# Four Laning U.S. Highway 12

## U.S. HIGHWAY 12 COALITION - RETURN ON INVESTMENT

### U.S. Highway 12 Coalition Costs

Year 2002 =	\$ 62,200
Year 2003 =	\$ 93,088
Year 2004 =	\$ 94,000
Year 2005 =	\$ 85,000
<b>Total</b>	<b>\$334,288</b>

\* Does not include marketing expenses or Coalition member travel expenses.

### Actual Appropriation

2002 Retained WSDOT Phase I Funding	\$10.1	Million
2003 Federal Appropriation	\$4.4	Million
2003 WSDOT Revenue Package	\$35.5	Million
2004 Federal Appropriation	\$4.0	Million
2005 Federal Appropriation	\$2.25	Million
2005 WSDOT Revenue Package	\$60.23	Million
2005 Federal TEA-21	\$5.9	Million
<b>Total</b>	<b>\$122.38</b>	<b>Million</b>

***FOR EVERY ONE DOLLAR INVESTED BY THE U.S. HIGHWAY 12 COALITION THERE HAS BEEN A RETURN OF \$366.***

# Four Laning U.S. Highway 12 Celebration – Phase 1



# Four Laning U.S. Highway 12 Celebration – Phase 2



# Four Laning U.S. Highway 12 Celebration – Phase 3



# Four Laning U.S. Highway 12



***[www.ushighway12.com](http://www.ushighway12.com)***