



## **SR 520 Tolling: Traffic Monitoring**

***Saturday, January 07, 2012***

Baseline data: Sat, 10/29-11/18 & 11/26-12/16

### **Daily Volume:**

<b>% change</b>
<b>1/7/2012</b>
<b>baseline</b>

### SR 520 Bridge

<b>-52%</b>
<b>38,400</b>
<b>80,200</b>

### I-90 Bridge

<b>17%</b>
<b>119,000</b>
<b>101,700</b>

### SR 522 at 83rd Ave NE

<b>7%</b>
<b>29,600</b>
<b>27,600</b>

### **Traffic Summary:**

Traffic volume on the SR 520 bridge was down 52% compared to a typical Saturday. I-90 volume increased by 17% and SR 522 volume increased by 7%. Volume in the rest of the region was down 0-8% compared to a typical November through mid-December Saturday. Travel time on SR 520 was free-flow throughout the day and was less than normal on all other routes.

### **Major Incidents:**

Collision on I-5 SB at Michigan St blocking 1-4 lanes from 1:40 to 2:36 am

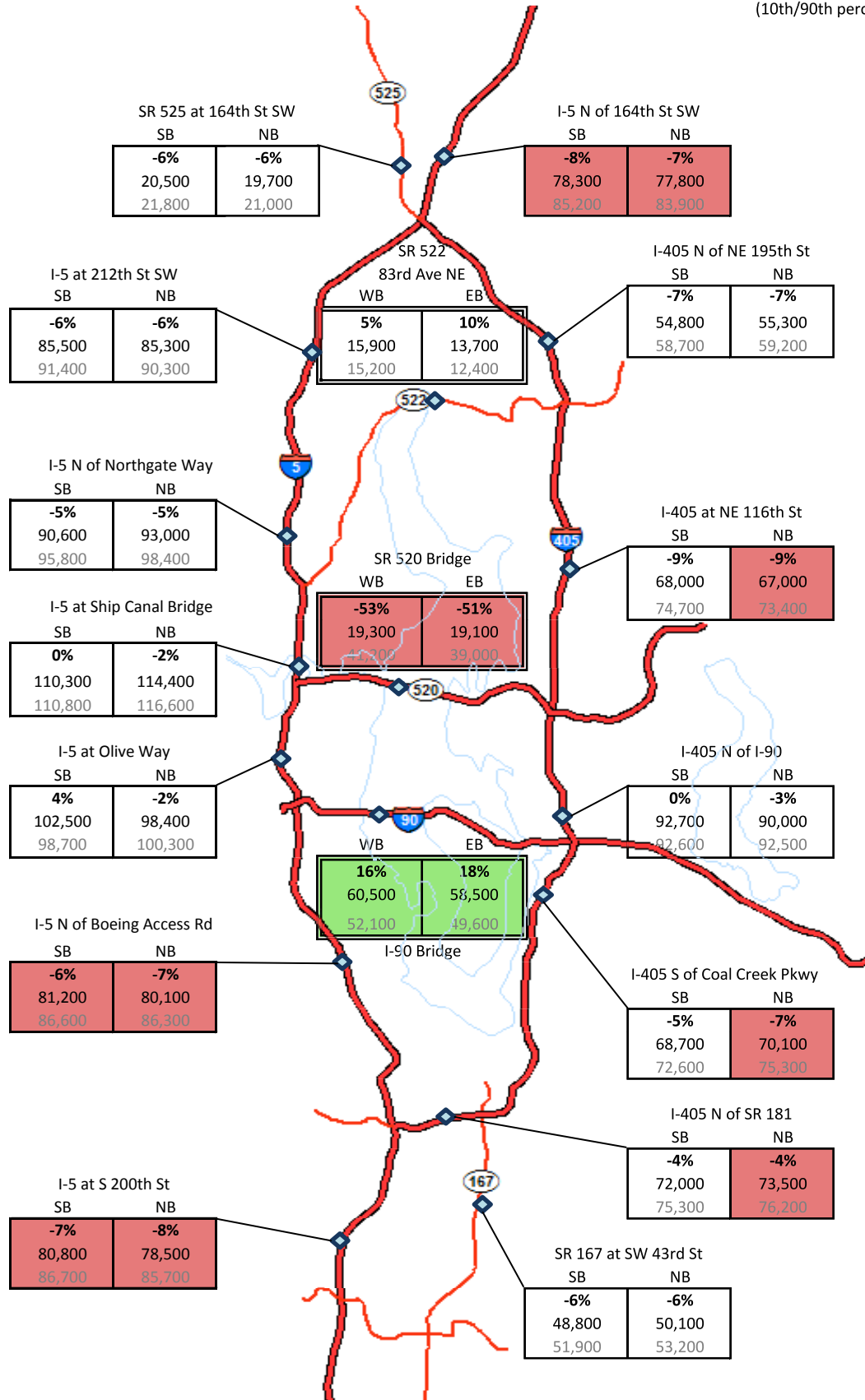
### **Special Events:**

None

**SR 520 Tolling: Traffic Monitoring**  
**Daily Mainline Volumes**  
**Saturday, January 07, 2012**

Base data: Sat, 10/29-11/18 & 11/26-12/16

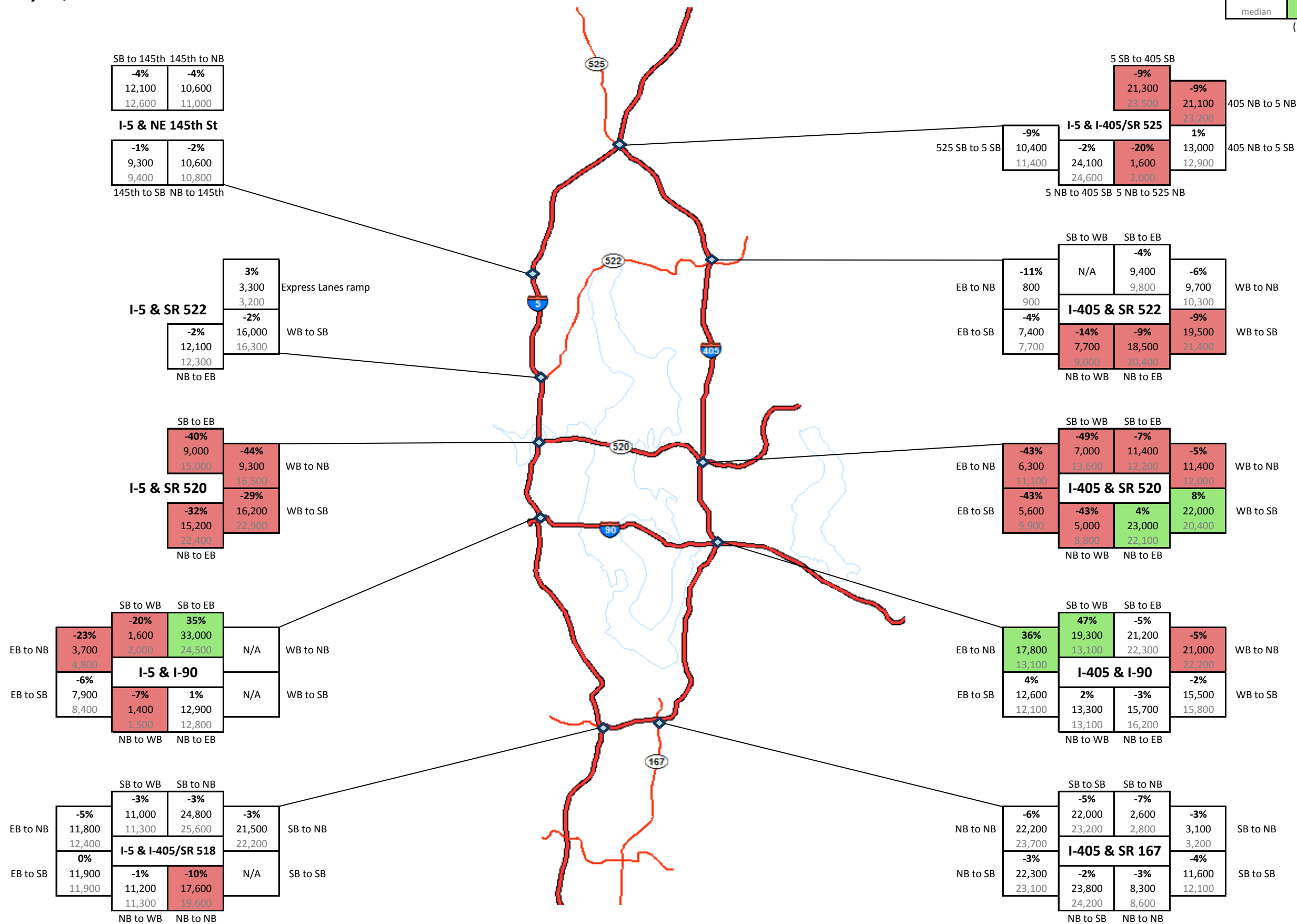
% change	above range of	below range of
1/7/2012	typical	typical
median	variation	variation
	(10th/90th percentile)	



**SR 520 Tolling: Traffic Monitoring**  
**Daily Interchange Volumes**  
**Saturday, January 07, 2012**

Base data: Sat, 10/29-11/18 & 11/26-12/16

% change	above range	below range
1/7/2012	of typical	of typical
median	variation	variation
	(10th/90th percentile)	



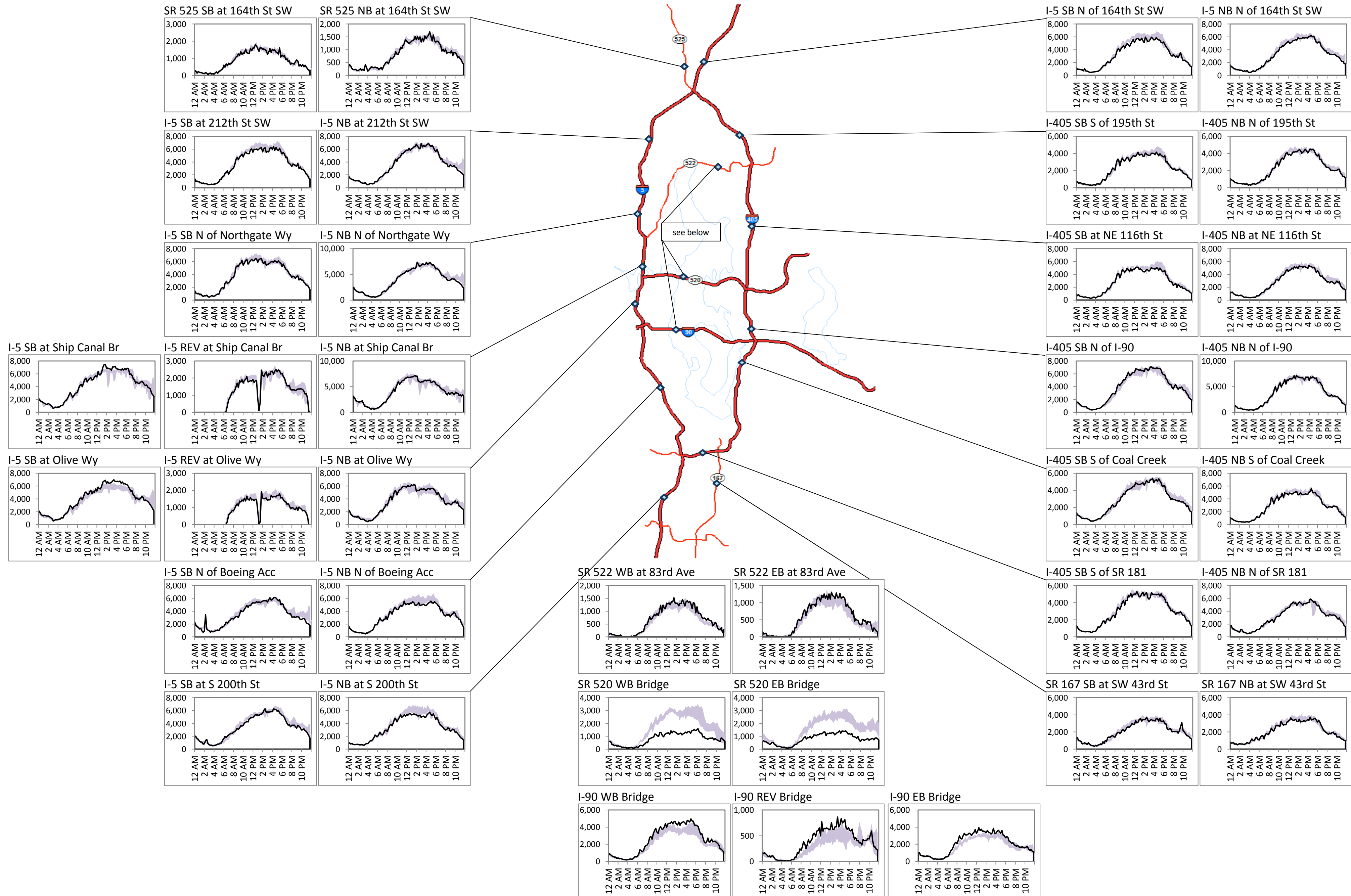
# SR 520 Tolling: Traffic Monitoring

## Hourly Mainline Volumes

Saturday, January 7, 2012

— Saturday, January 7, 2012

■ Typical Range (10-90%ile, Sat, 10/29-11/18 & 11/26-12/16)



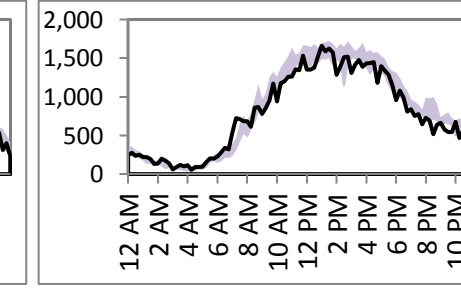
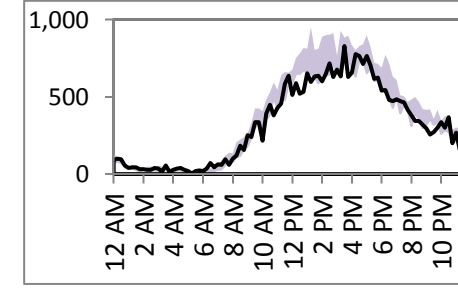
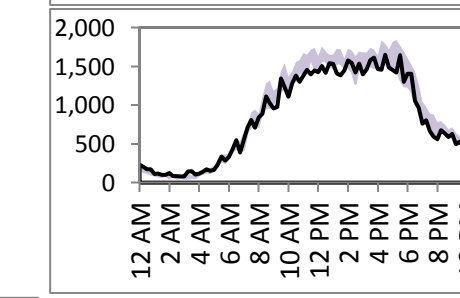
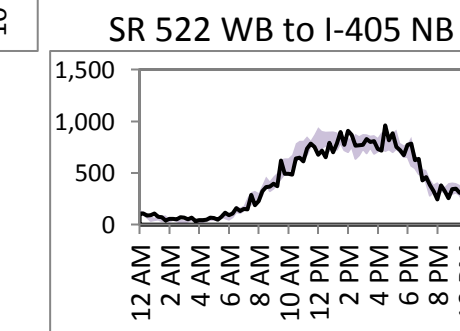
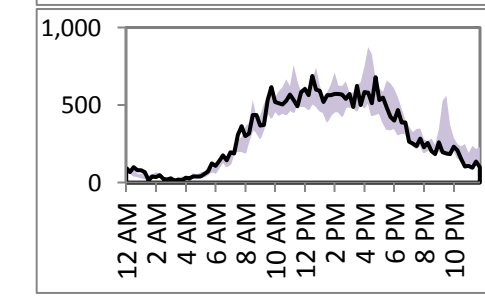
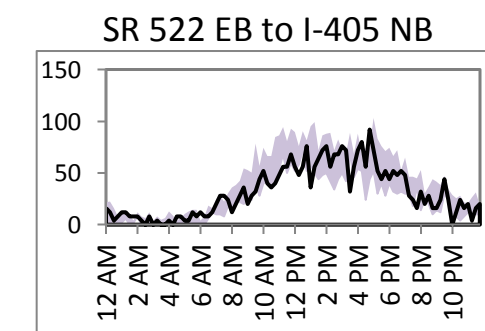
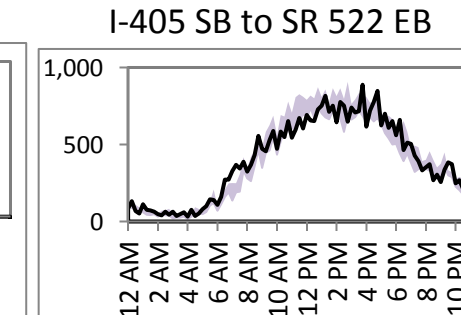
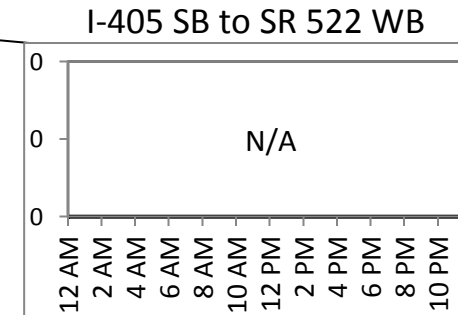
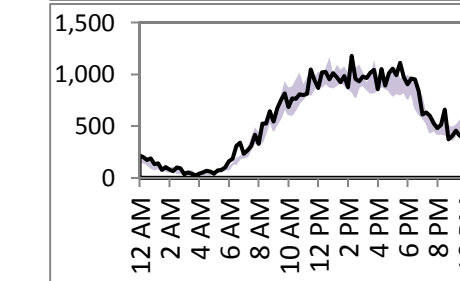
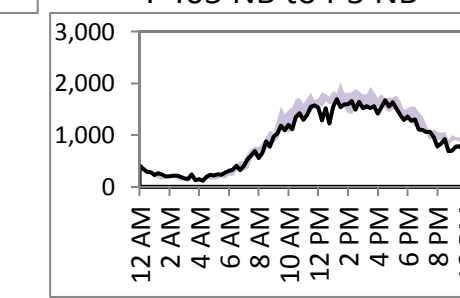
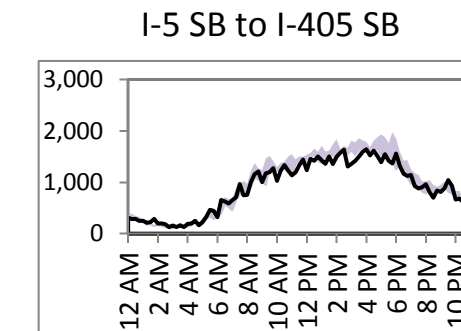
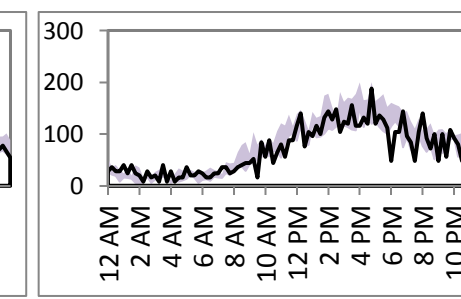
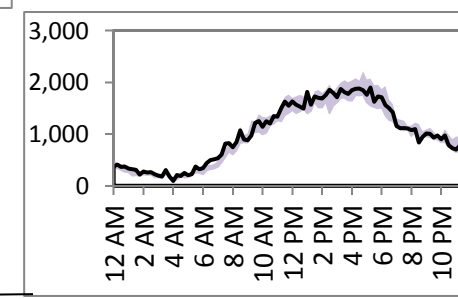
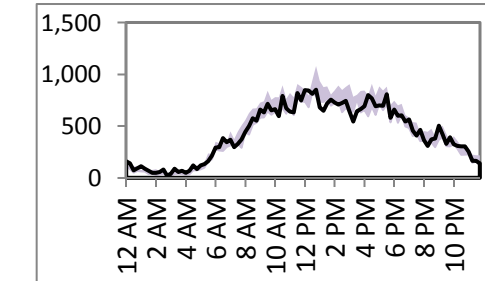
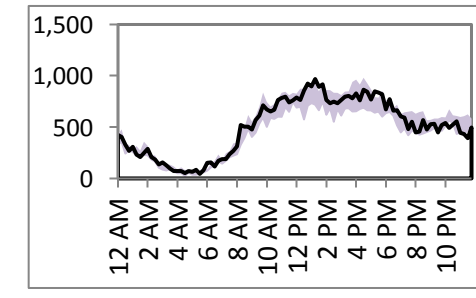
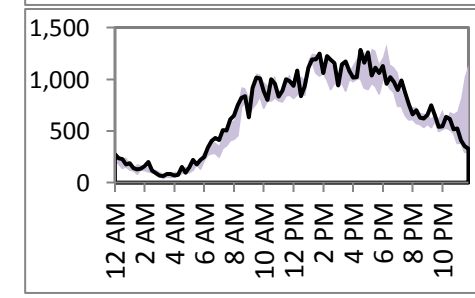
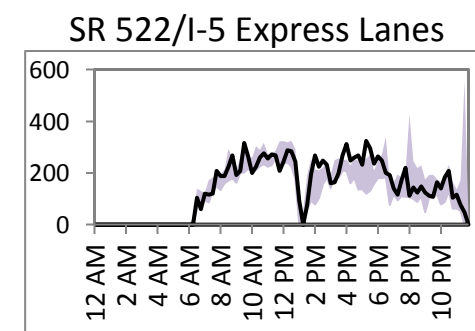
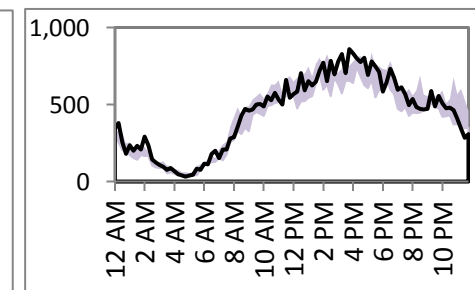
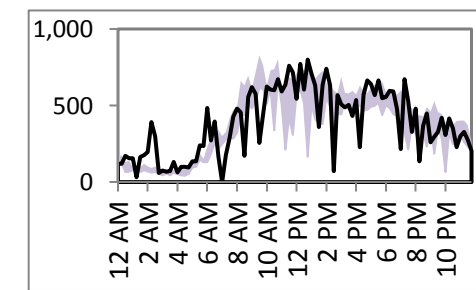
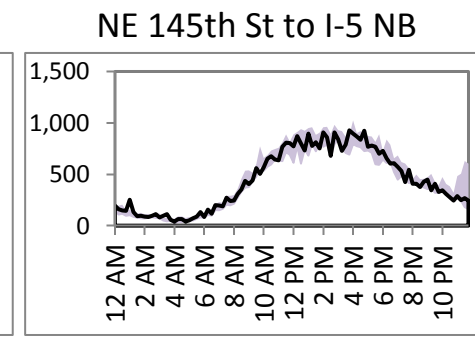
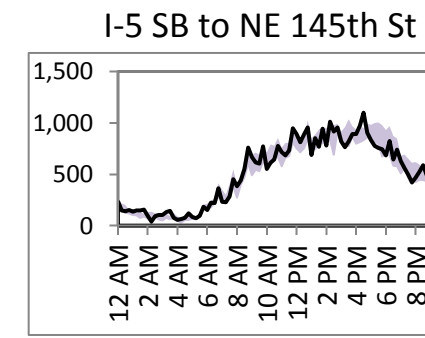
# SR 520 Tolling: Traffic Monitoring

## Hourly Interchange Volumes

Saturday, January 7, 2012

— Saturday, January 7, 2012

■ Typical Range (10-90%ile, Sat, 10/29-11/18 & 11/26-12/16)



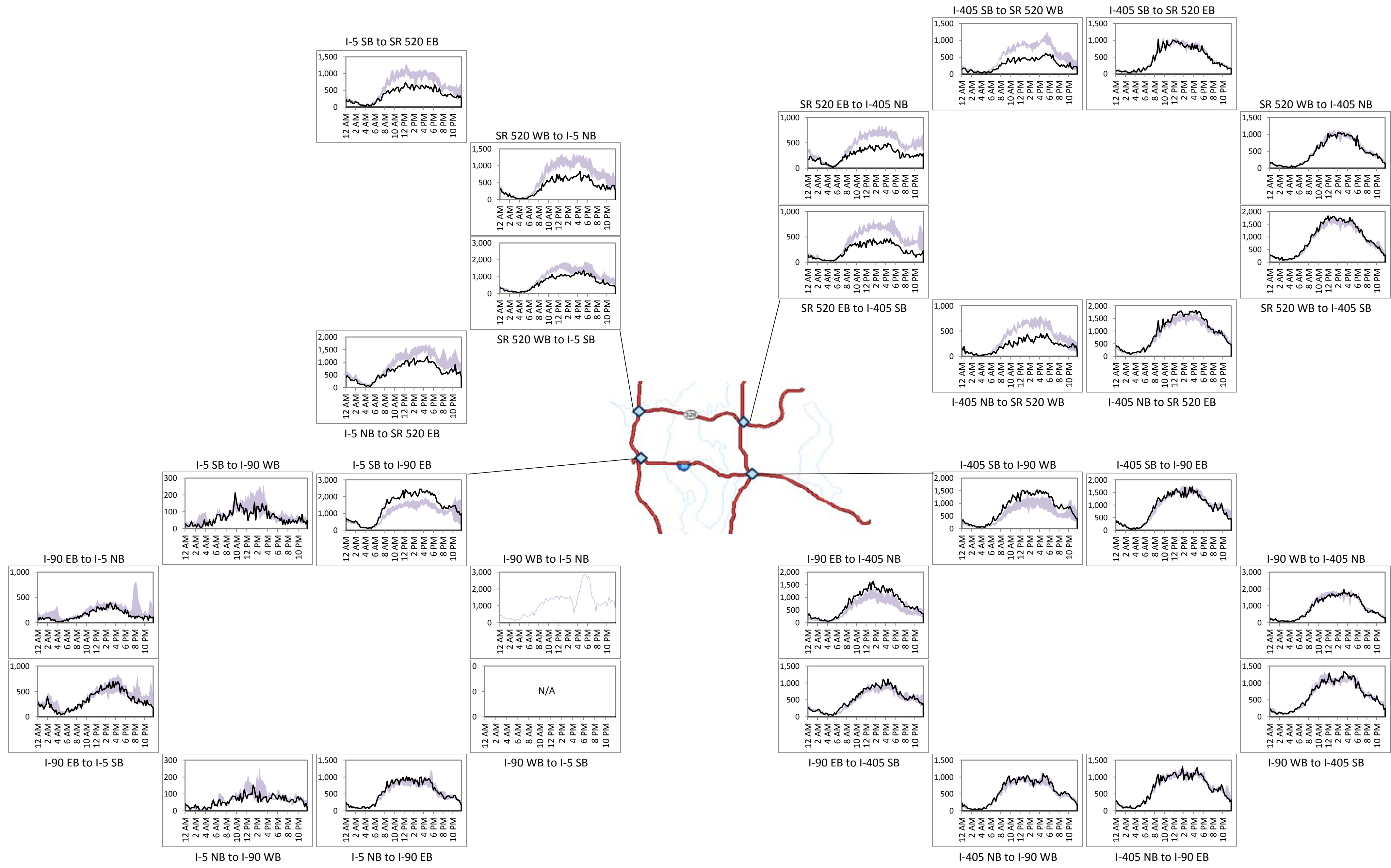
# SR 520 Tolling: Traffic Monitoring

## Hourly Interchange Volumes

Saturday, January 7, 2012

— Saturday, January 7, 2012

■ Typical Range (10-90%ile, Sat, 10/29-11/18 & 11/26-12/16)



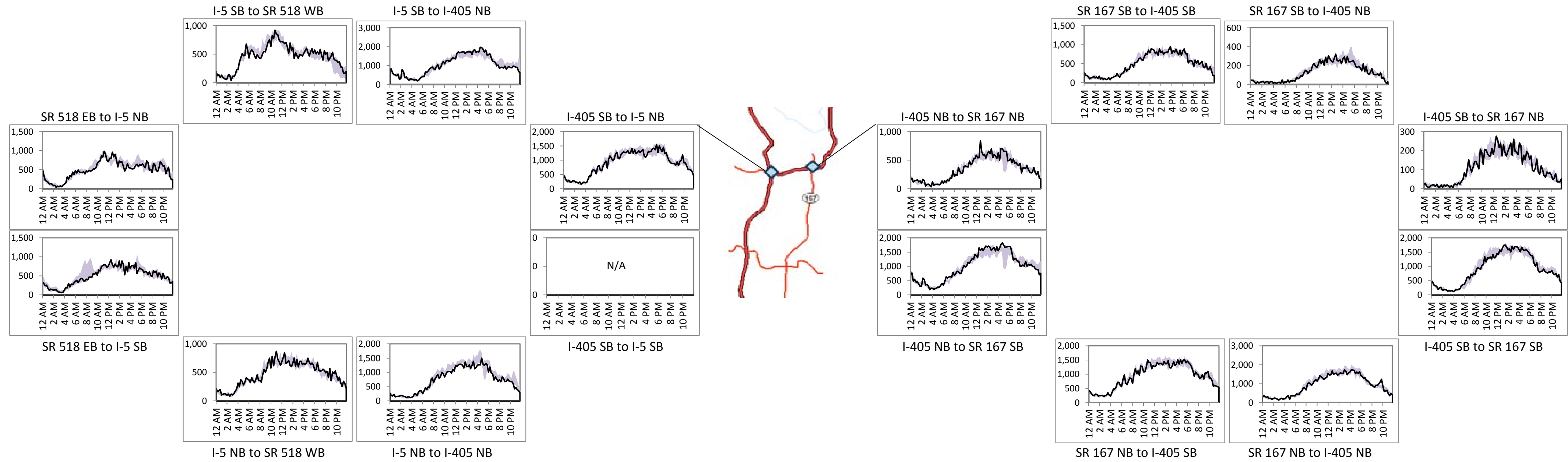
# SR 520 Tolling: Traffic Monitoring

## Hourly Interchange Volumes

Saturday, January 7, 2012

— Saturday, January 7, 2012

■ Typical Range (10-90%ile, Sat, 10/29-11/18 & 11/26-12/16)



# SR 520 Tolling: Traffic Monitoring

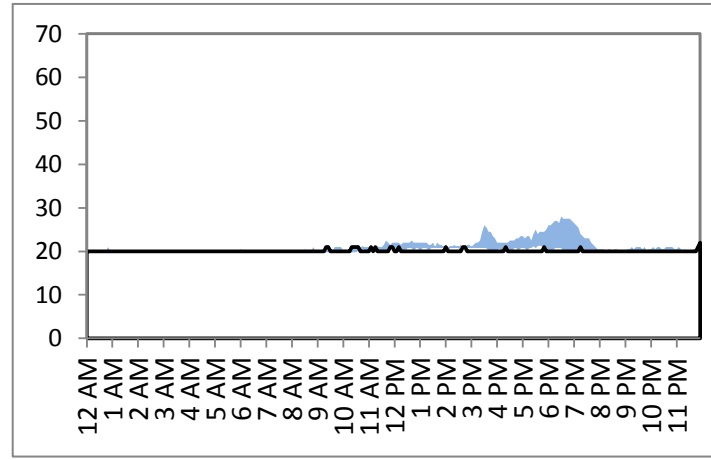
## Travel Times

Saturday, January 7, 2012

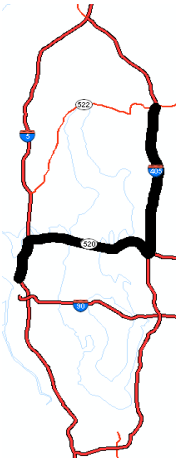
— Saturday, January 7, 2012

■ Typical Range (10-90%ile, Sat, 10/29-11/18 & 11/26-12/16)

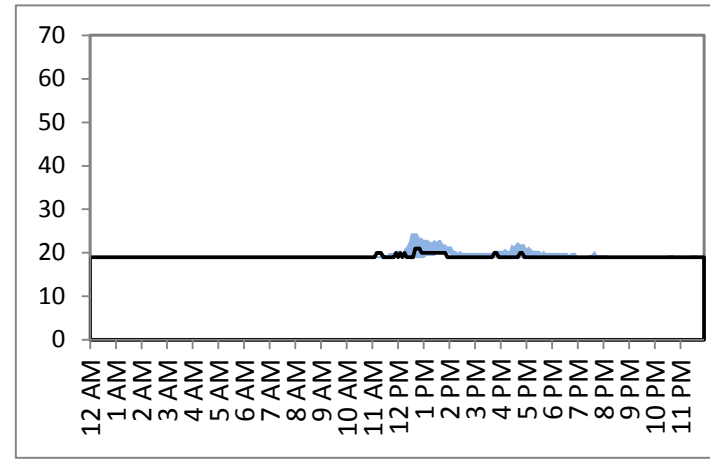
### Woodinville to Seattle



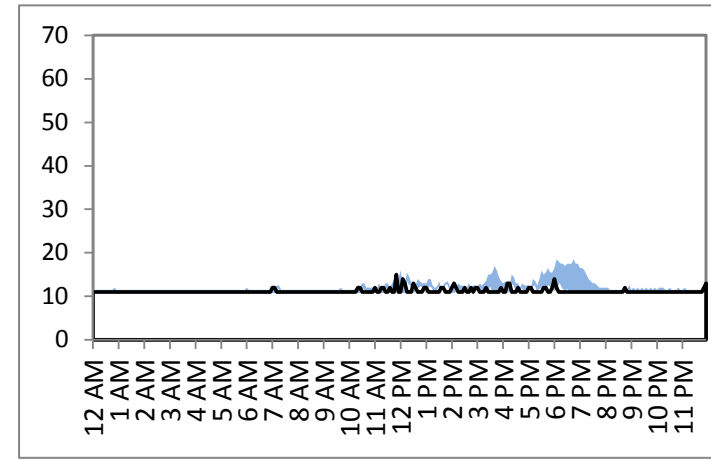
### via 520



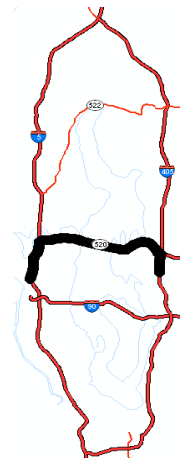
### Seattle to Woodinville



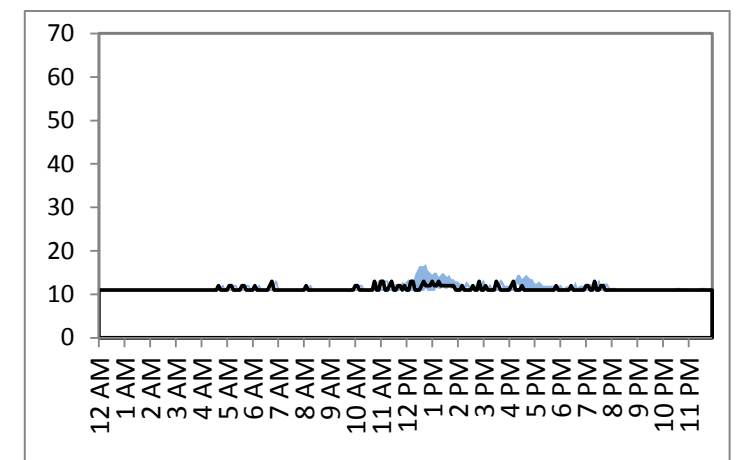
### Bellevue to Seattle



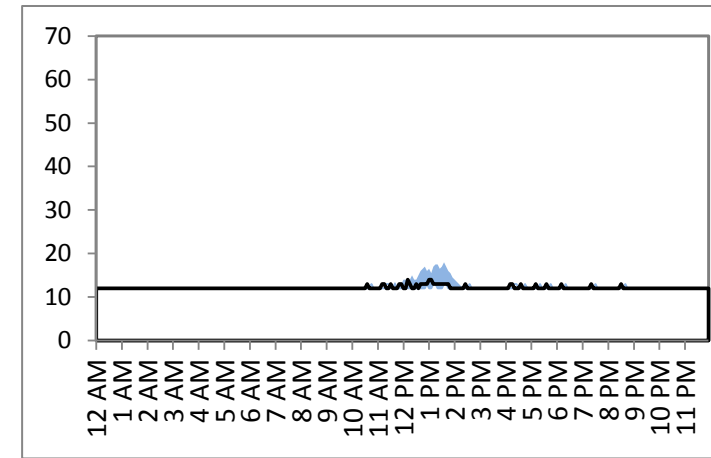
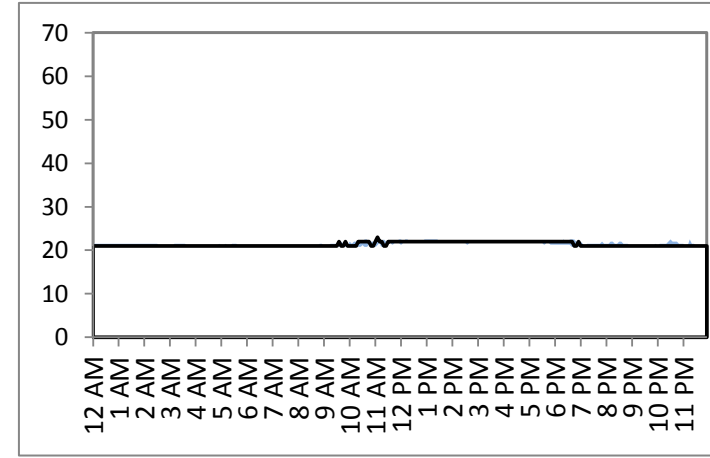
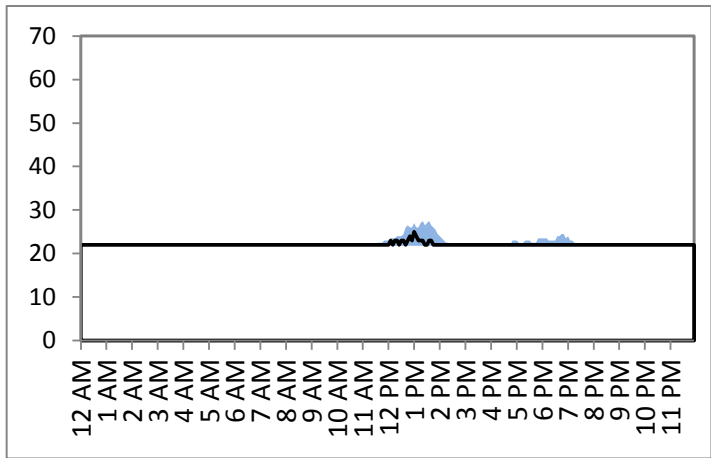
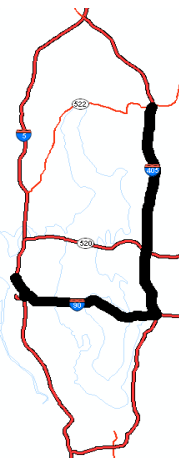
### via 520



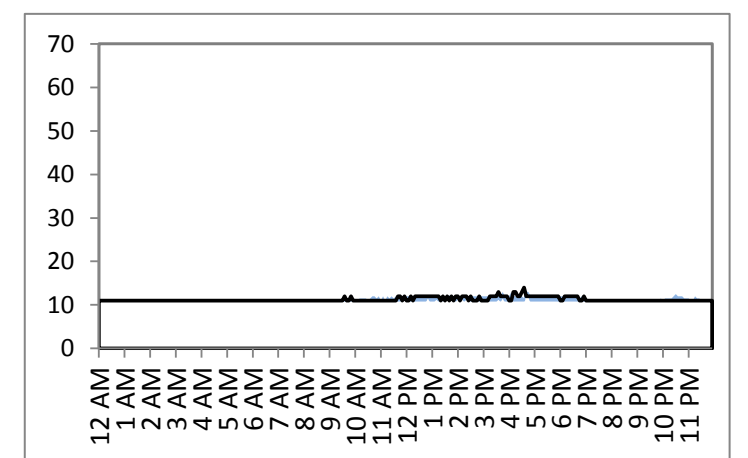
### Seattle to Bellevue



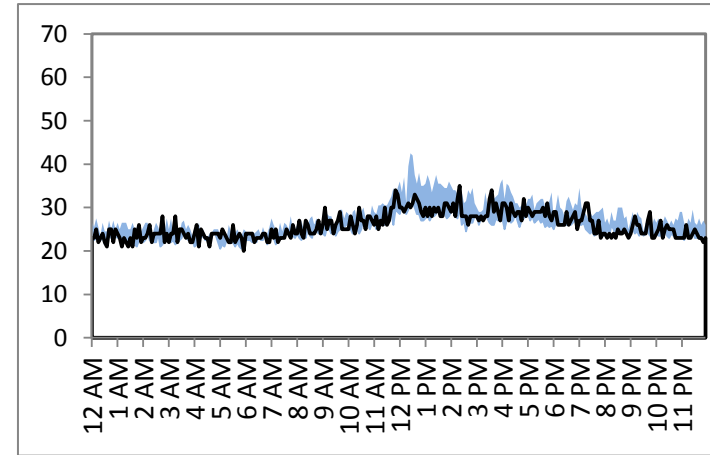
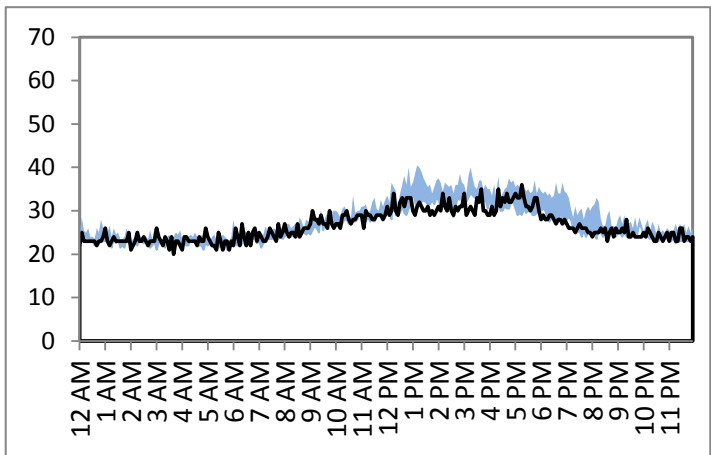
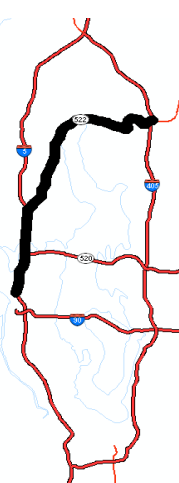
### via I-90



### via I-90



### via SR 522



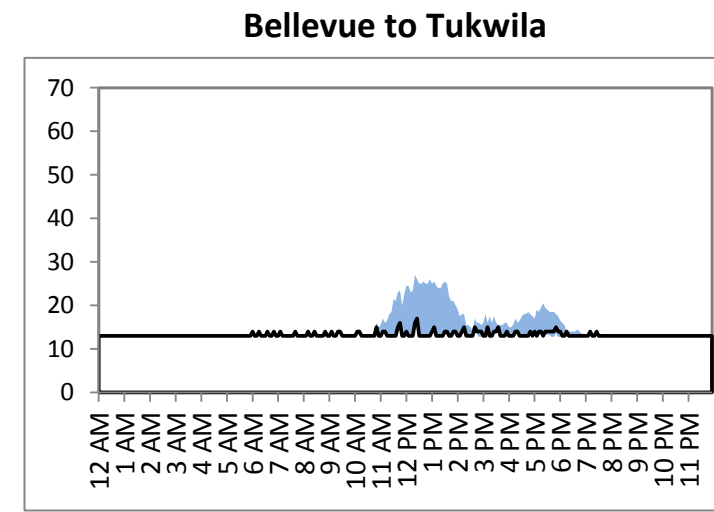
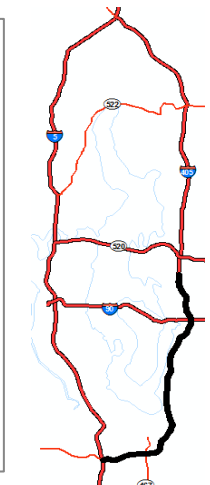
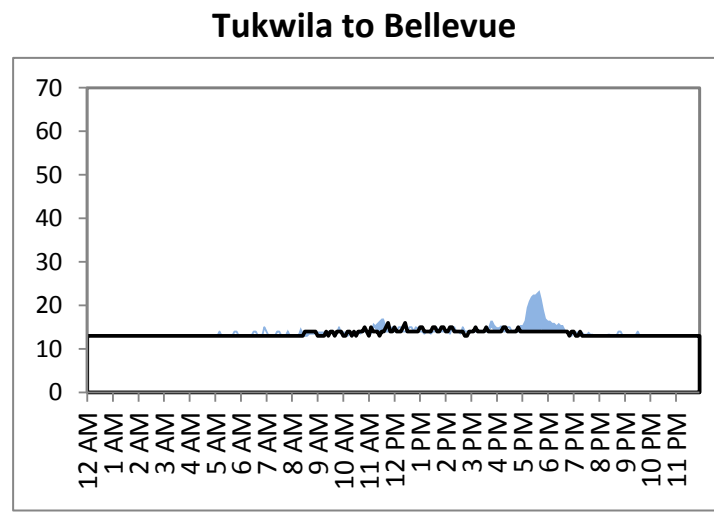
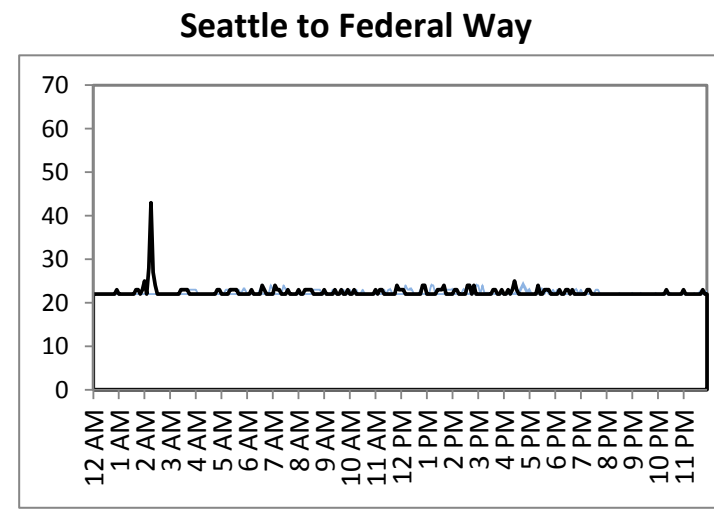
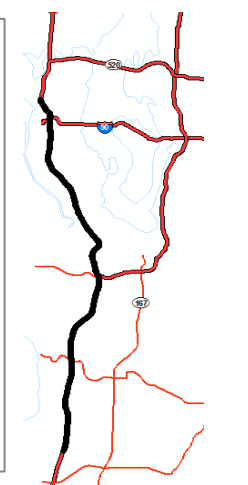
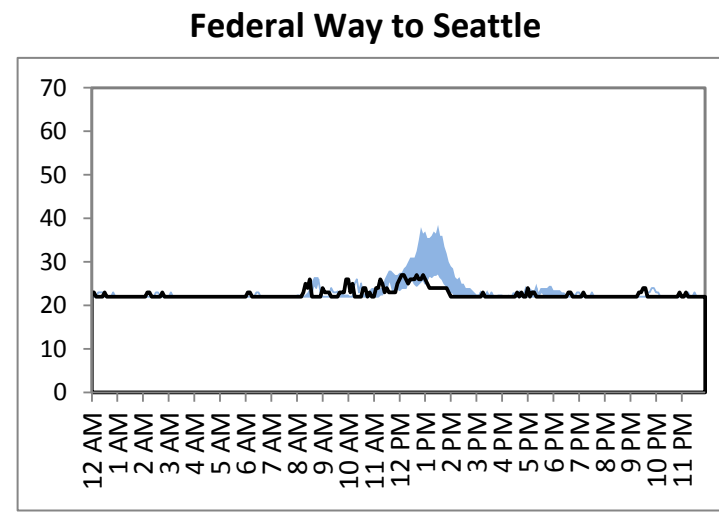
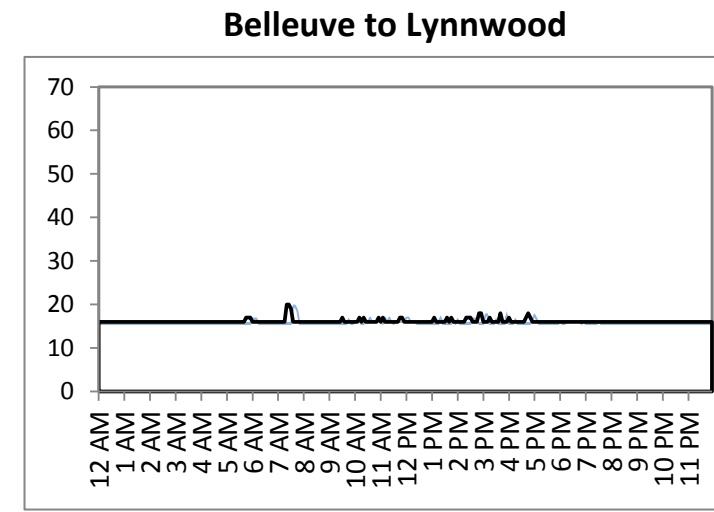
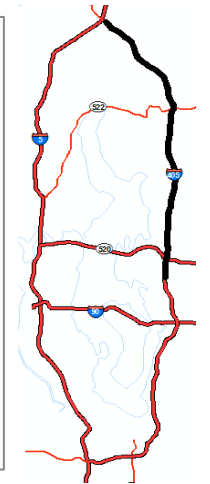
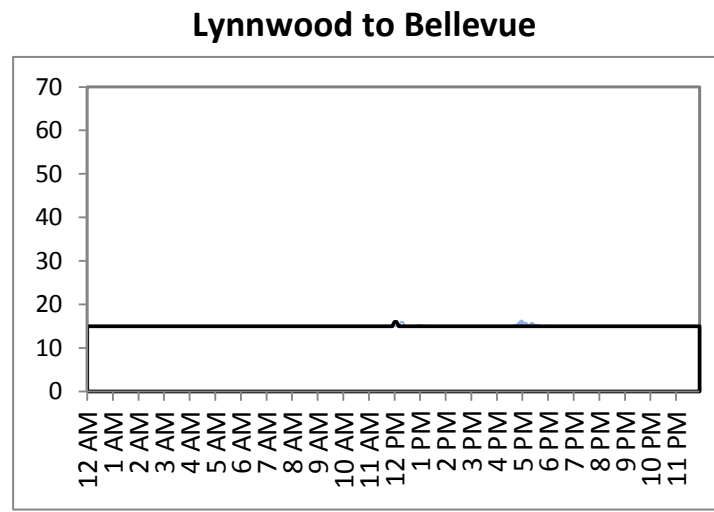
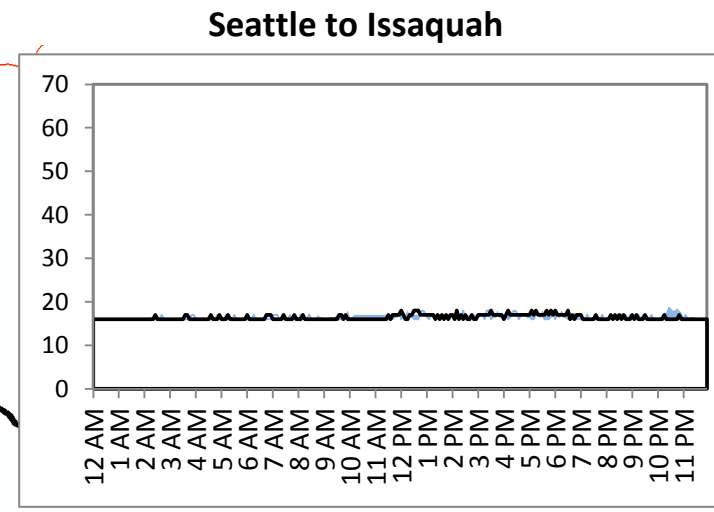
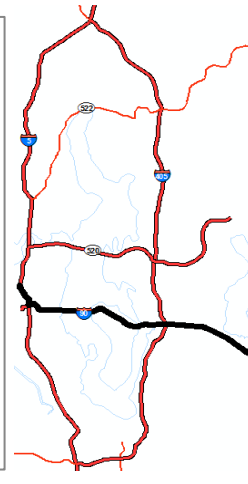
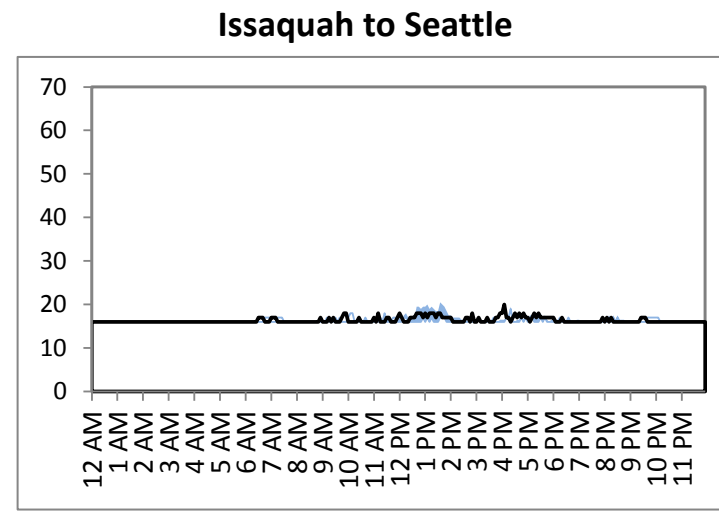
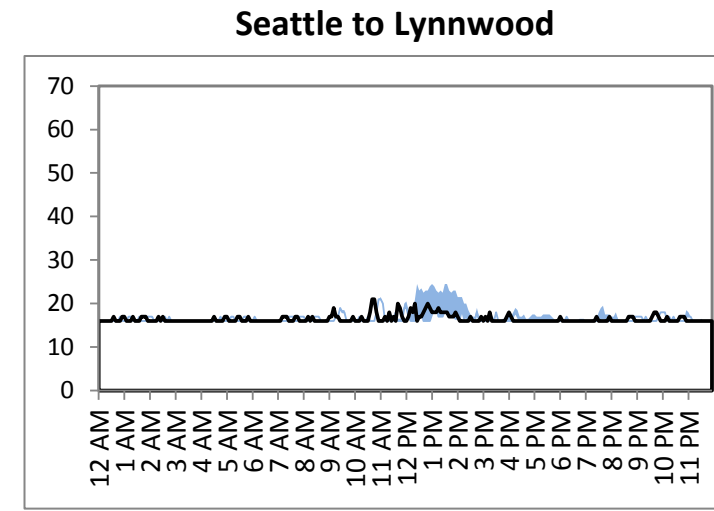
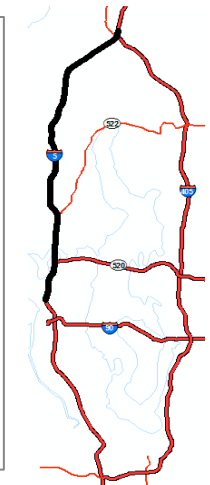
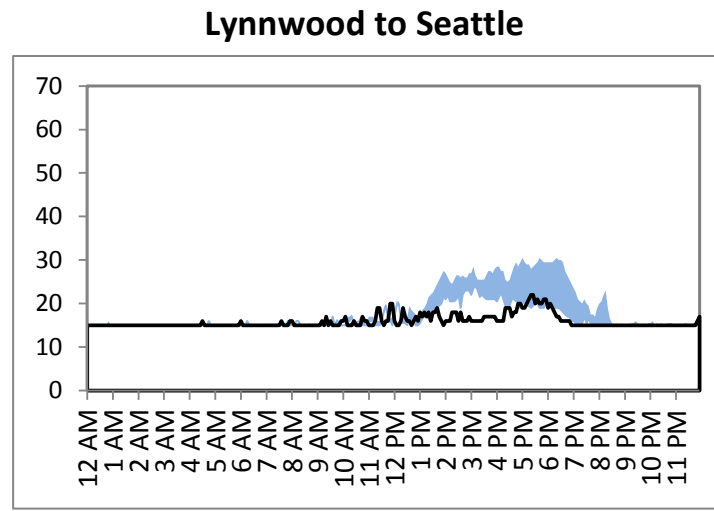
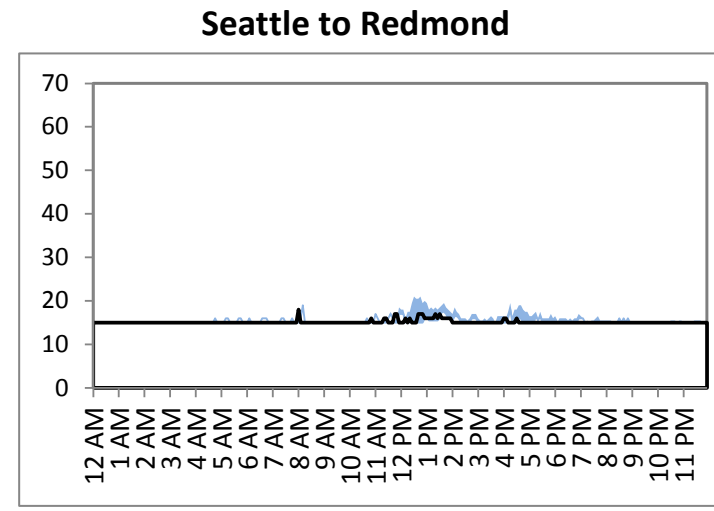
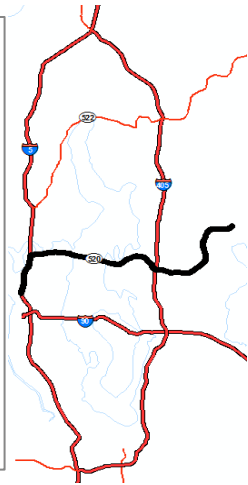
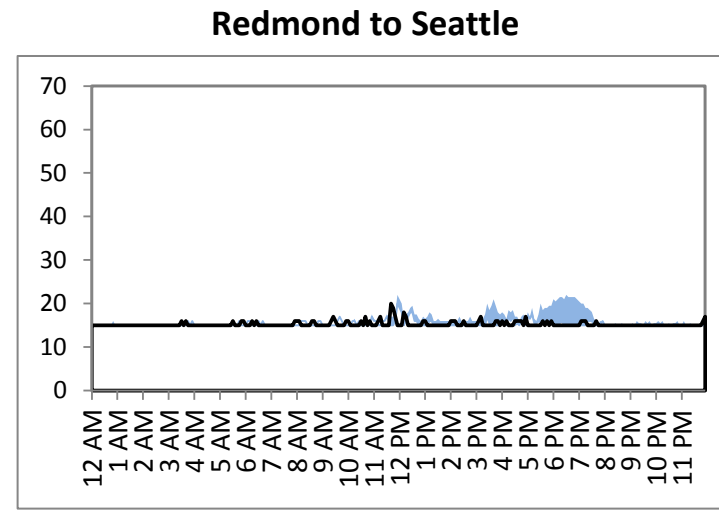
# SR 520 Tolling: Traffic Monitoring

## Travel Times

Saturday, January 7, 2012

— Saturday, January 7, 2012

■ Typical Range (10-90%ile, Sat, 10/29-11/18 & 11/26-12/16)



**SR 520 Tolling: Traffic Monitoring**

**Congestion Contours**

*Saturday, January 7, 2012*

- free flow
- moderate
- heavy
- stop and go



# SR 520 Tolling: Traffic Monitoring

## SR 520 Detail

Saturday, January 7, 2012

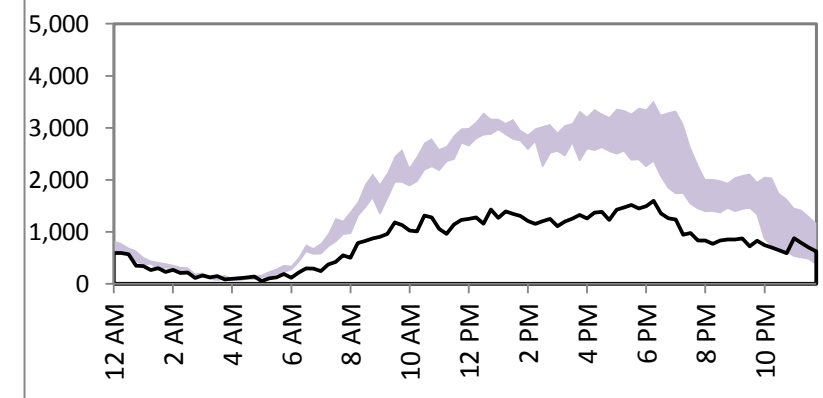
### Mainline Volume



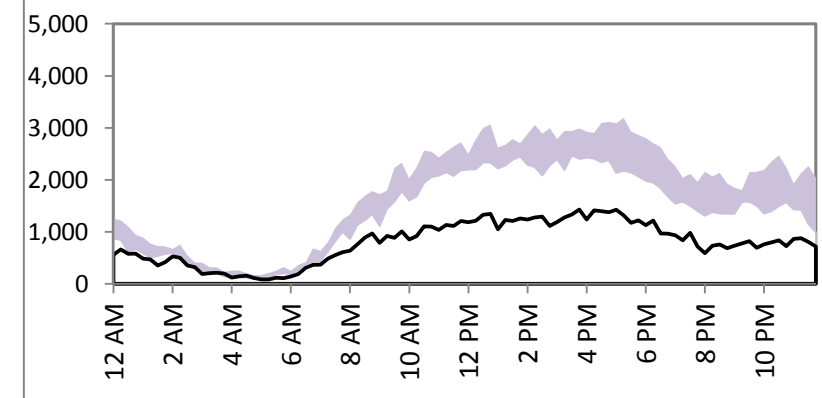
SR 520 Bridge

WB	EB
<b>-53%</b>	<b>-51%</b>
19,300	19,100
41,200	39,000

SR 520 WB Bridge



SR 520 EB Bridge



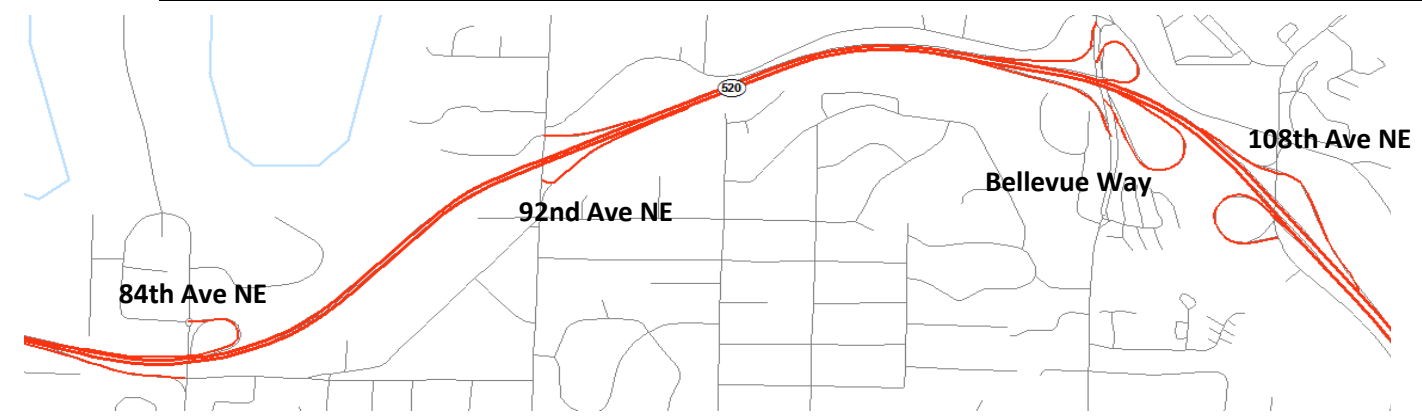
### Ramp Volume

Montlake Blvd		Lk Wa Blvd
WB on ramp	WB exit	WB exit
<b>16%</b>	<b>-47%</b>	<b>-47%</b>
12,500	4,300	1,900
10,800	8,100	3,600

84th Ave NE		92nd Ave NE		Bellevue Way		108th Ave NE	
WB on ramp	WB exit	NB to WB on ramp	SB to WB on ramp	WB on ramp	WB exit	WB on ramp	WB exit
<b>-47%</b>	<b>6%</b>	<b>-48%</b>	<b>-39%</b>	<b>-40%</b>	<b>-10%</b>		
1,700	3,500	1,500	1,900	900	5,700		
3,200	3,300	2,900	3,100	1,500	6,300		



<b>10%</b>	<b>-45%</b>	<b>-48%</b>
11,500	5,600	1,600
10,500	10,200	3,100
EB exit	EB on ramp	EB on ramp
<b>Montlake Blvd</b>	<b>Lk Wa Blvd</b>	



<b>-38%</b>	<b>-3%</b>	<b>-41%</b>	<b>-8%</b>
2,000	3,700	3,900	5,400
3,200	3,800	6,600	5,900
EB exit	EB on ramp	EB exit	EB on ramp
<b>84th Ave NE</b>	<b>92nd Ave NE</b>	<b>Bellevue Way</b>	<b>108th Ave NE</b>

# SR 520 Tolling: Traffic Monitoring

## I-90 Detail

Saturday, January 7, 2012

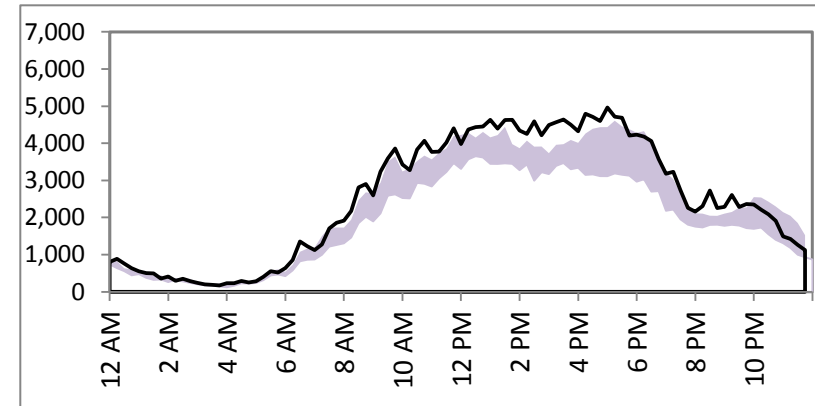
### Mainline Volume



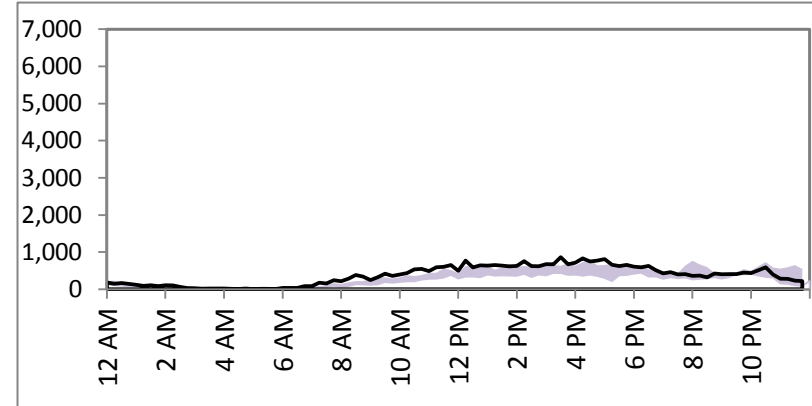
I-90 Bridge

WB	EB
<b>16%</b>	<b>18%</b>
60,500	58,500
52,100	49,600

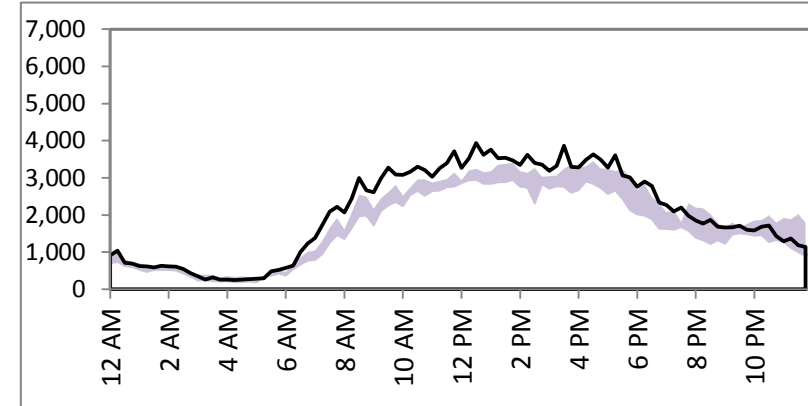
I-90 WB Bridge



I-90 REV Bridge



I-90 EB Bridge



### Bellevue Way Ramp Volume

I-90 EB to Bellevue Way	Bellevue Way to I-90 WB
<b>23%</b>	<b>17%</b>
7,000	7,400
5,700	6,300

# SR 520 Tolling: Traffic Monitoring

## SR 522 Detail

Saturday, January 7, 2012

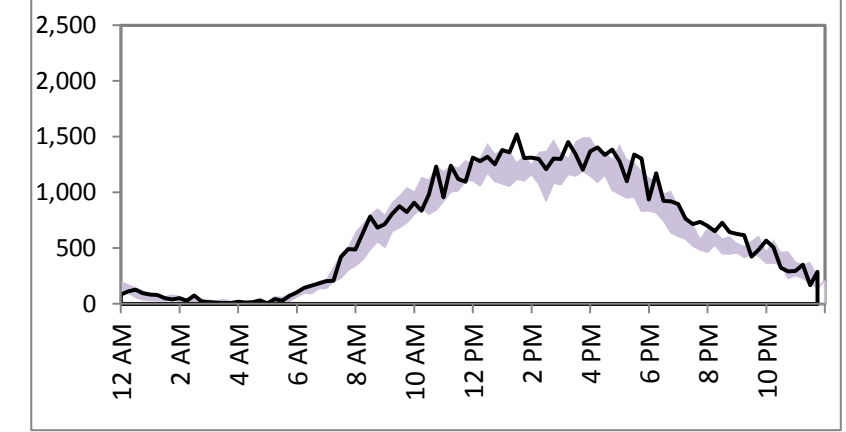
— Saturday, January 7, 2012  
 ■ Typical Range (10-90%ile, Sat, 10/29-11/18 & 11/26-12/16)

### Mainline Volume

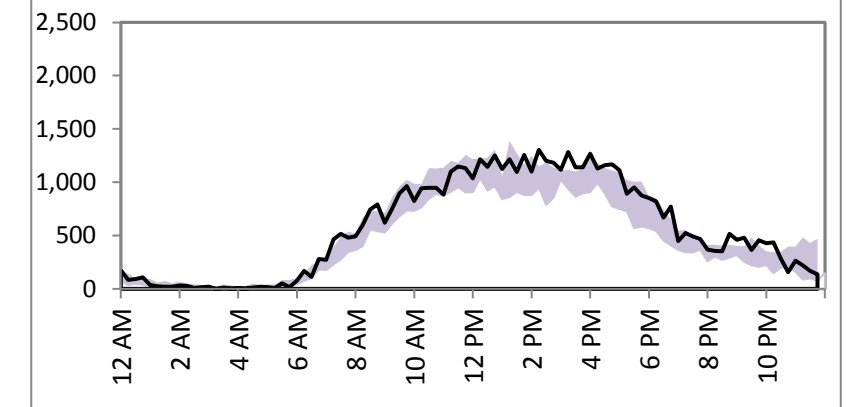


83rd PI NE	
WB	EB
<b>5%</b>	<b>10%</b>
15,900	13,700
15,200	12,400

SR 522 WB at 83rd Ave NE

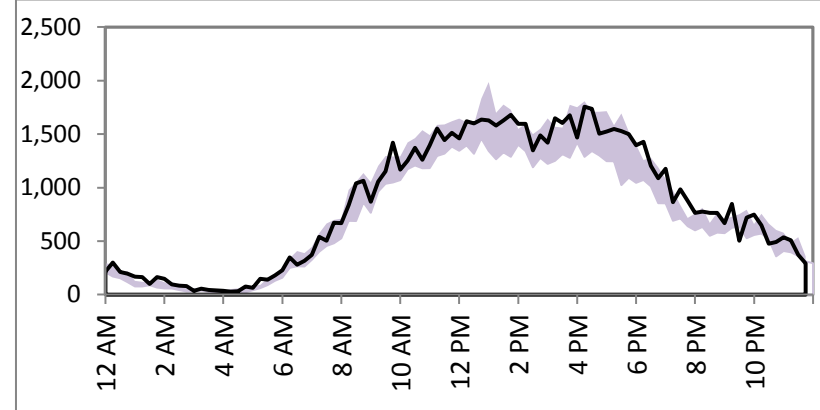


SR 522 EB at 83rd Ave NE



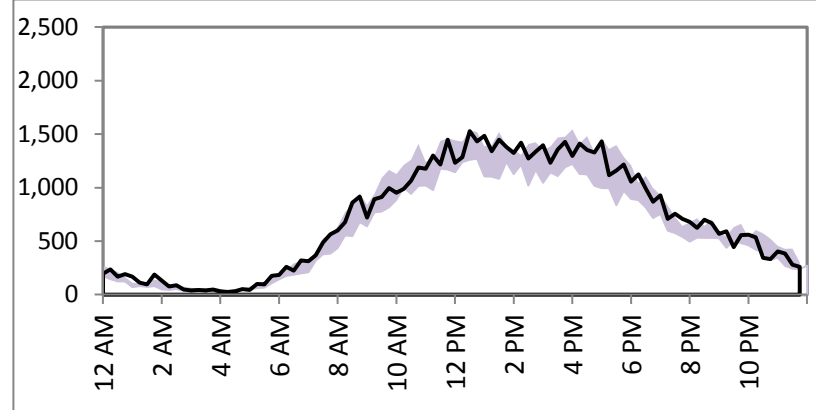
68th Ave NE	
WB	EB
<b>6%</b>	<b>6%</b>
20,400	15,100
19,200	14,200

SR 522 WB at 68th Ave NE



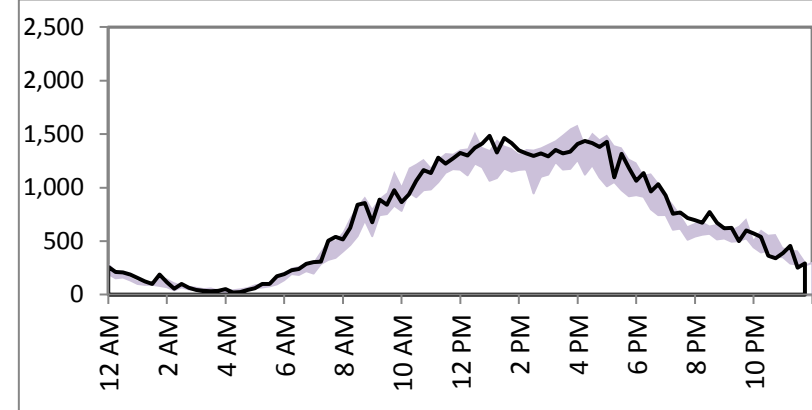
73rd Ave NE	
WB	EB
<b>2%</b>	<b>5%</b>
17,100	16,200
16,700	15,400

SR 522 WB at 73rd Ave NE



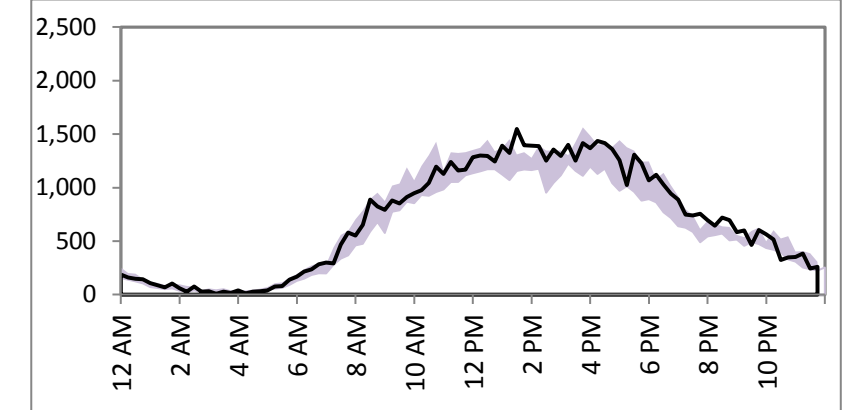
77th Ct NE	
WB	EB
<b>2%</b>	<b>4%</b>
17,100	16,300
16,800	15,700

SR 522 WB at 77th Ct NE

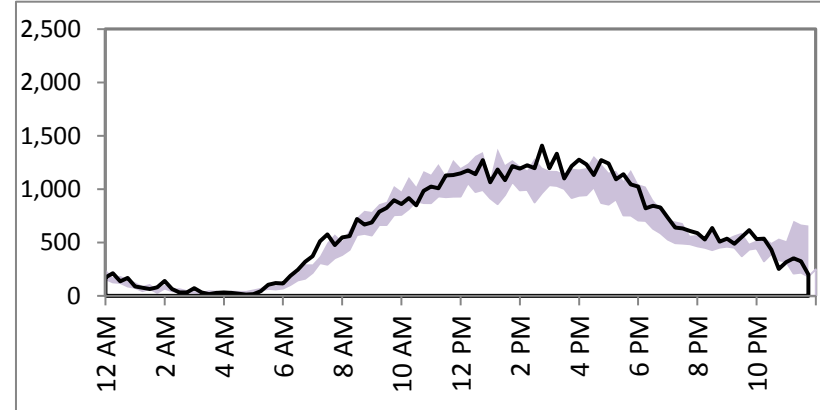


80th Ave NE	
WB	EB
<b>1%</b>	<b>7%</b>
16,700	15,500
16,500	14,500

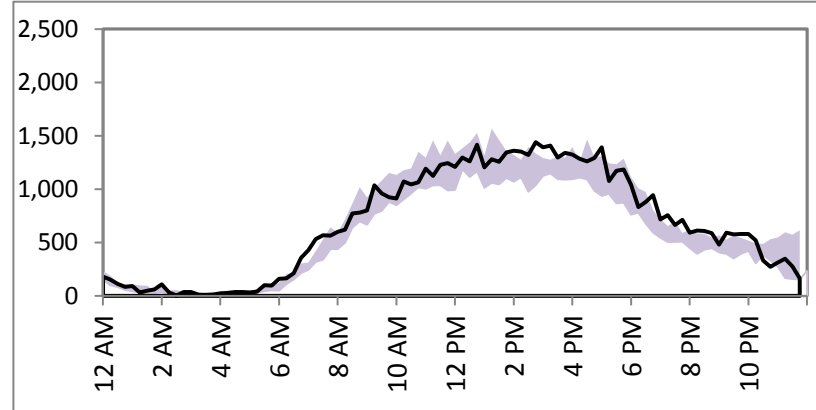
SR 522 WB at 80th Ave NE



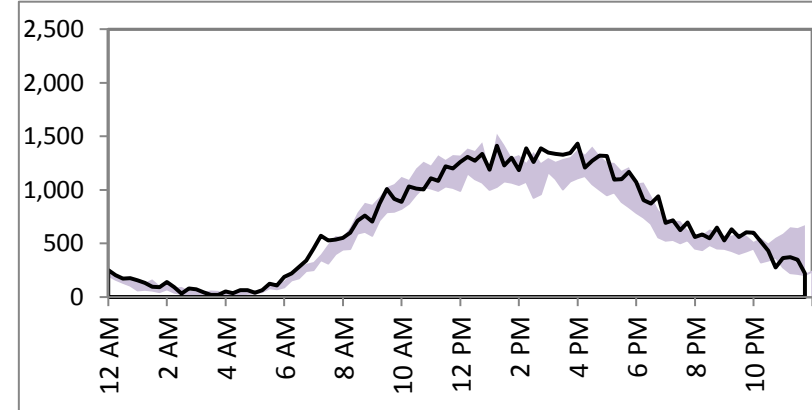
SR 522 EB at 68th Ave NE



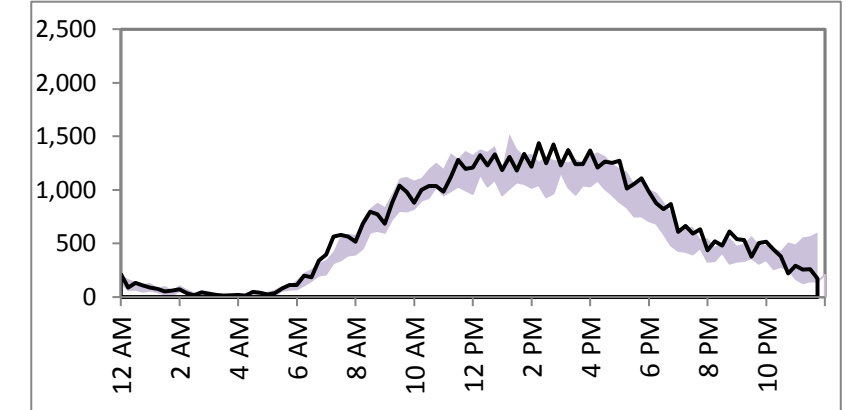
SR 522 EB at 73rd Ave NE



SR 522 EB at 77th Ct NE



SR 522 EB at 80th Ave NE

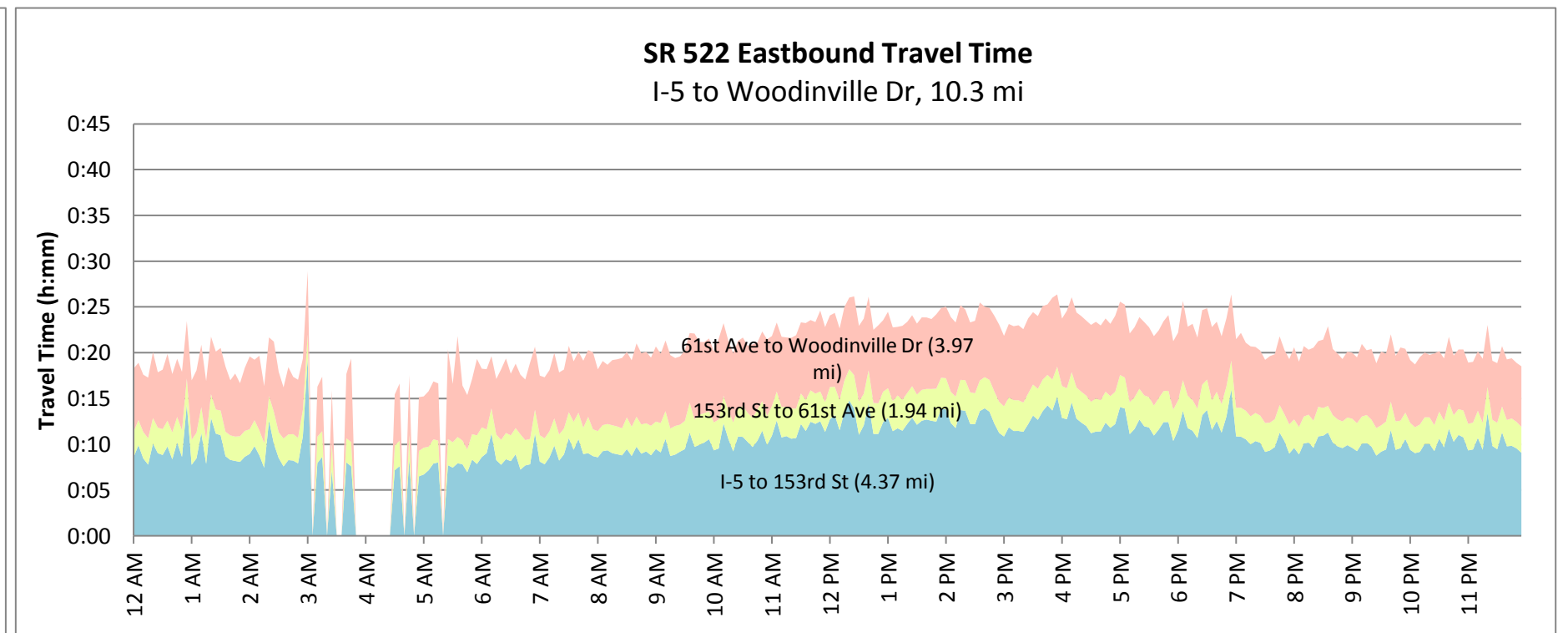
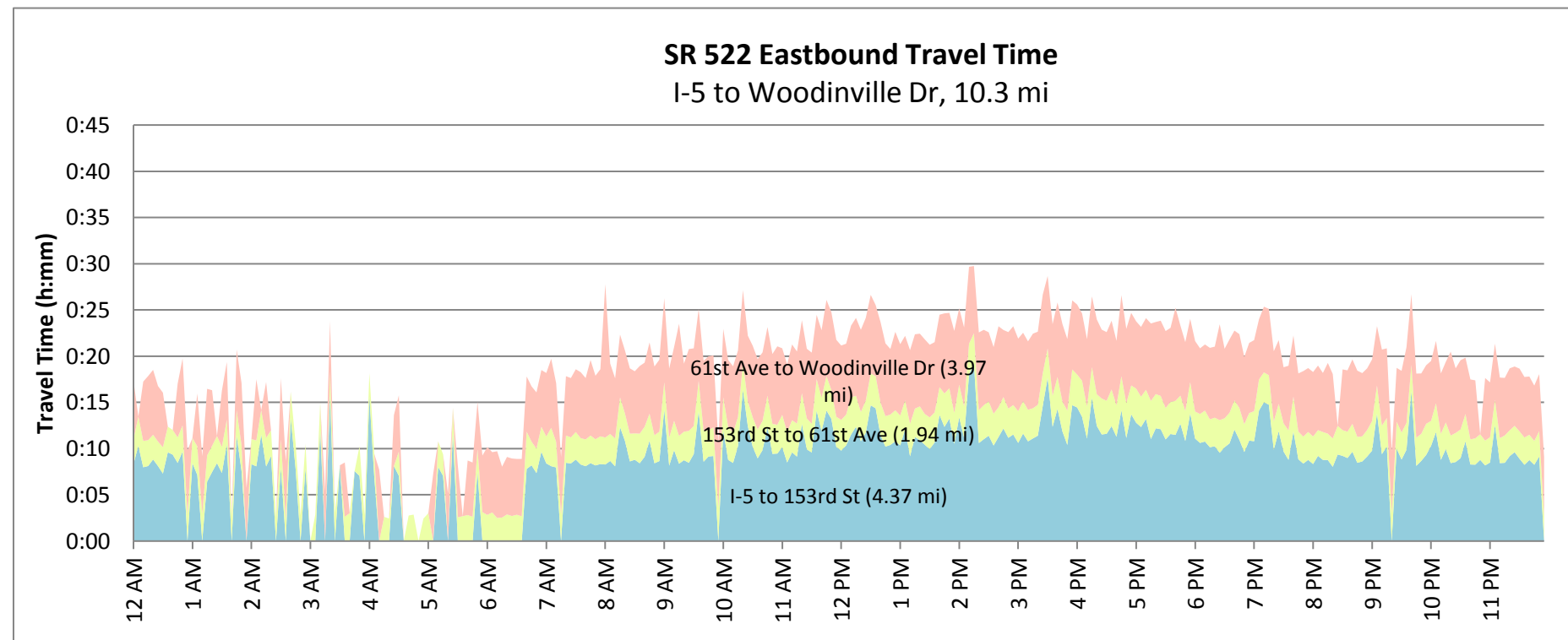
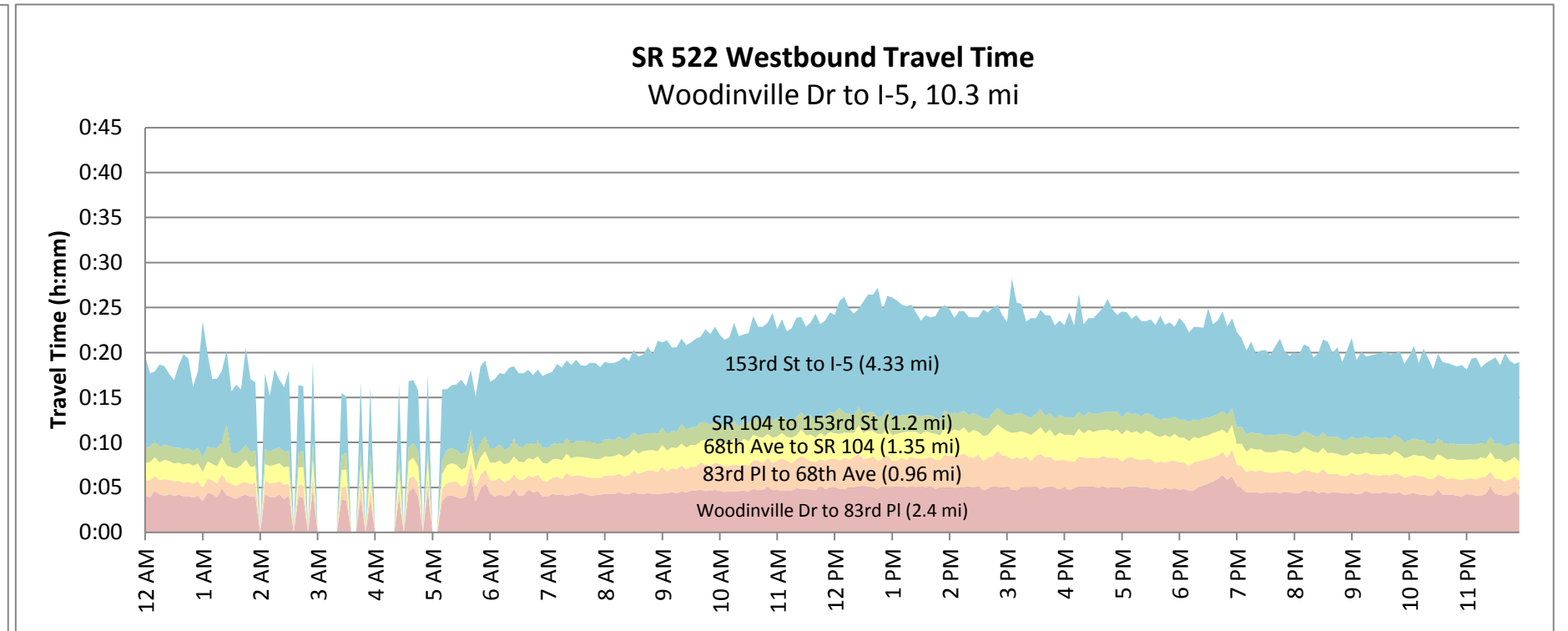
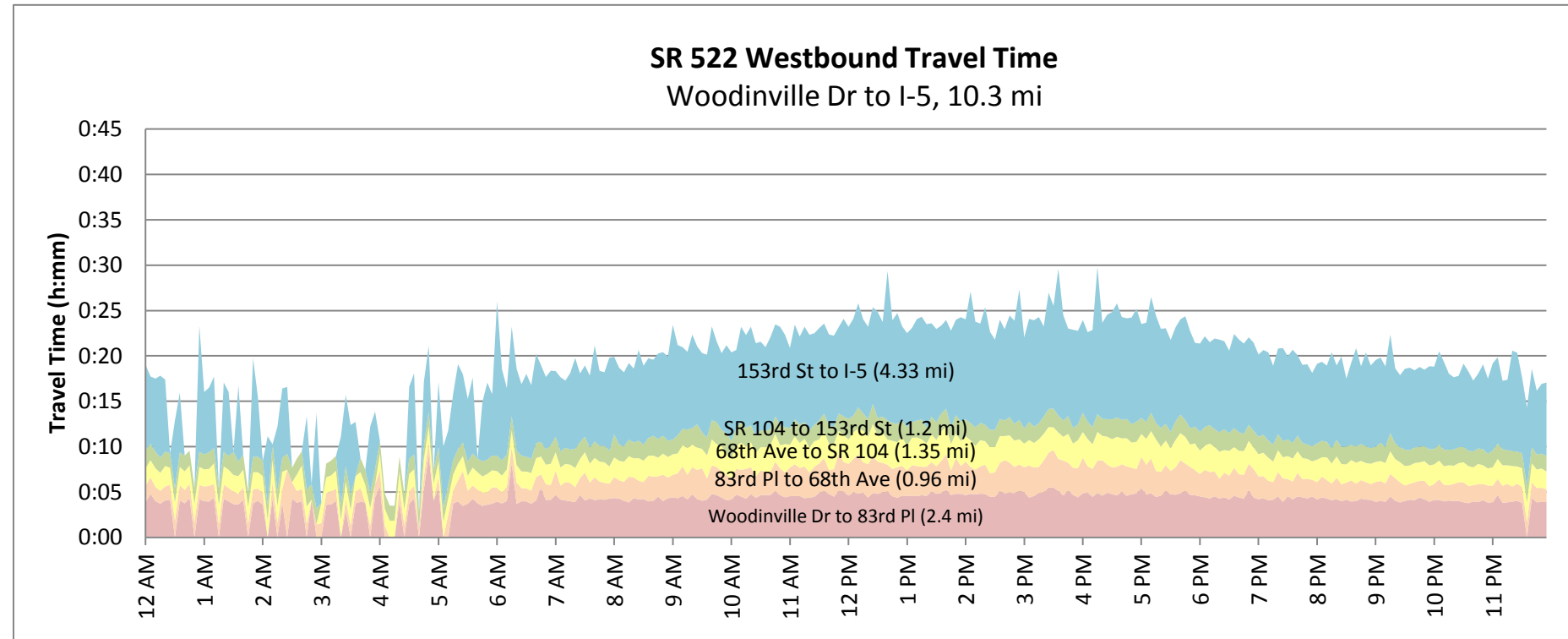


**SR 520 Tolling: Traffic Monitoring**

**SR 522 Travel Times**

**Saturday, January 7, 2012**

Sat, 10/29-11/18 & 11/26-12/16



Note: travel time data may be unavailable during time periods with low traffic volume