

MONTHLY PROJECT OVERVIEW

I-405, South Bellevue Widening Project

August 2008

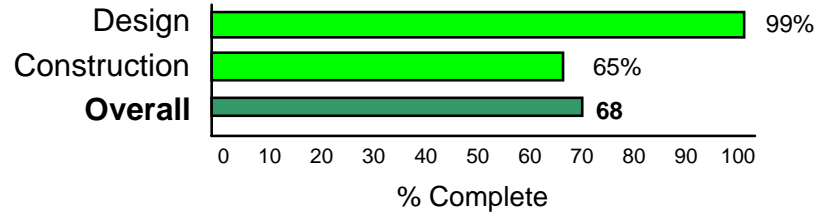
Project Location: I-405, 112th Ave SE to SE 8th St
Design-Builder: Atkinson

PIN: 840541F, 840509A, 840541G
WIN: U40541F

Design / Build Contract Summary

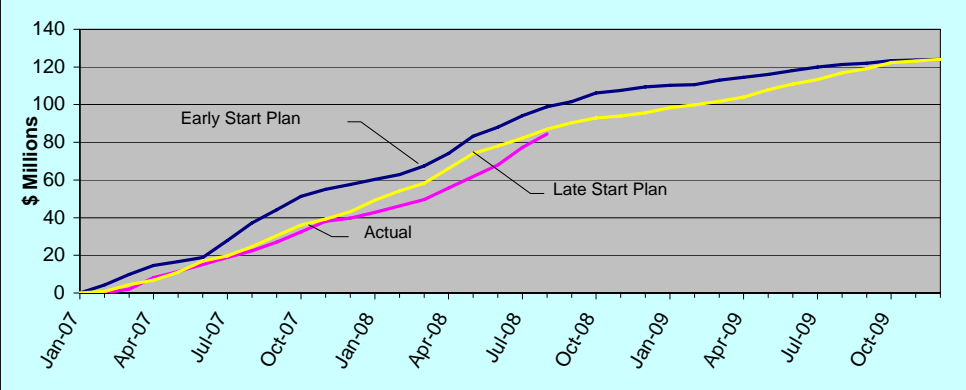
Contract Award: February 16, 2007
 Notice to Proceed: March 15, 2007
 Original Contract Time: 934 Calendar Days
 Original Substantial Completion: October 2009
 Original Contract Amount: \$124,000,000
 Revised Contract Amount: \$124,069,417

Project Progress to Date



Project Status as of: August 31, 2008
 Contract Days Elapsed: 504 of 934 = 57.3%
 Contract Amount Earned to Date: \$84,523,486 = 68.2%
 Contract Amount Earned This Period: \$7,150,907 = 5.8%
 Current Projected Completion Date: Oct. 2009 (on schedule)

Project Cash Flow



August 2008 Highlights



Removal of the Wilburton Tunnel.



Crew Member Pouring Approach Slab on North End of NE 8th Street.



Drainage Work on SE 8th Ramp.



Barrier Pour at Wall 2125.

Design-Build Schedule Summary

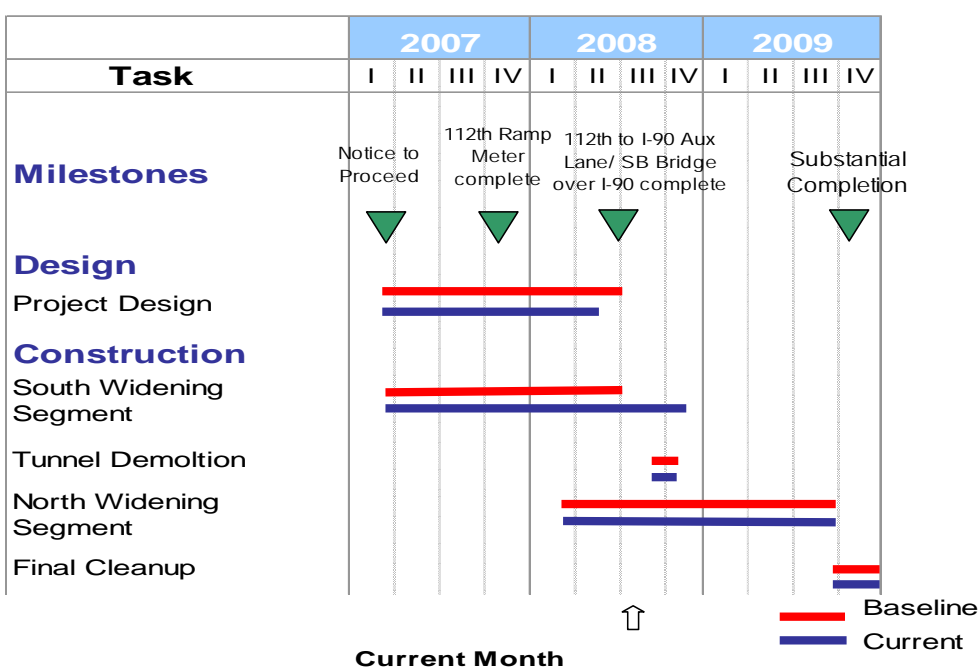
Design: Design is 99% complete. Only a few outstanding drawings need to be released for construction. Design will continue to support construction to the end of the project.

Construction: Removed Wilburton Tunnel in two weekends, eliminating the need for third weekend closure. During the Wilburton Closures, the project also progressed on the following work elements: paving permanent and future complex traffic shifts, pavement retrofit and grinding, sign bridge construction south of the tunnel location, drainage and electrical/ITS work. Set girders over last span for new southbound bridge at I-90, and began setting deck reinforcement. Began setting fascia panels on the retaining walls between 112th and Coal Creek Parkway.

Quality Control / Quality Assurance

To date the Design Builder's Quality Assurance staff has tested and accepted over 98,415 tons of gravel borrow, 11,410 tons of crushed surfacing base course and 5,890 cubic yards of concrete used in the construction of this project. WSDOT Quality Verification staff has performed similar material tests in a 1 to 5 frequency. All test data is entered into the WSDOT Statistical Analysis of Materials (SAMs) software program. SAMs then compares the two data sets to determine the validity of the test results. SAMs analysis shows the test results are good and has validated the Design Builder Quality Assurance testing program.

Summary Project Schedule



Risks / Challenges / Issues

Minimizing the construction impacts to the public remains a challenge. Autumn weather, especially rain squalls, create challenges for work progress and erosion control.

Public Information & Community Outreach

Informed the public of two weekend I-405 closures and early completion of the Wilburton Tunnel removal with extensive media coverage and other outreach opportunities.

Upcoming Activities -September 2008

Bridge deck pours beginning for new southbound I-405 bridge at I-90. Paving and barrier placement for the northbound roadway widening from 112th to Coal Creek Parkway. Sub grade preparation and paving southbound from SE 8th to I-90 widening.

For more information, Call 425.401.4143 or 425.456.8624 or visit www.wsdot.wa.gov/Projects/i405/112thAvetoSE8th/

IT'S YOUR NICKEL. WATCH IT WORK.

"Washington's Future Just Got Better"
MAKING EVERY DOLLAR COUNT.

Washington State Department of Transportation