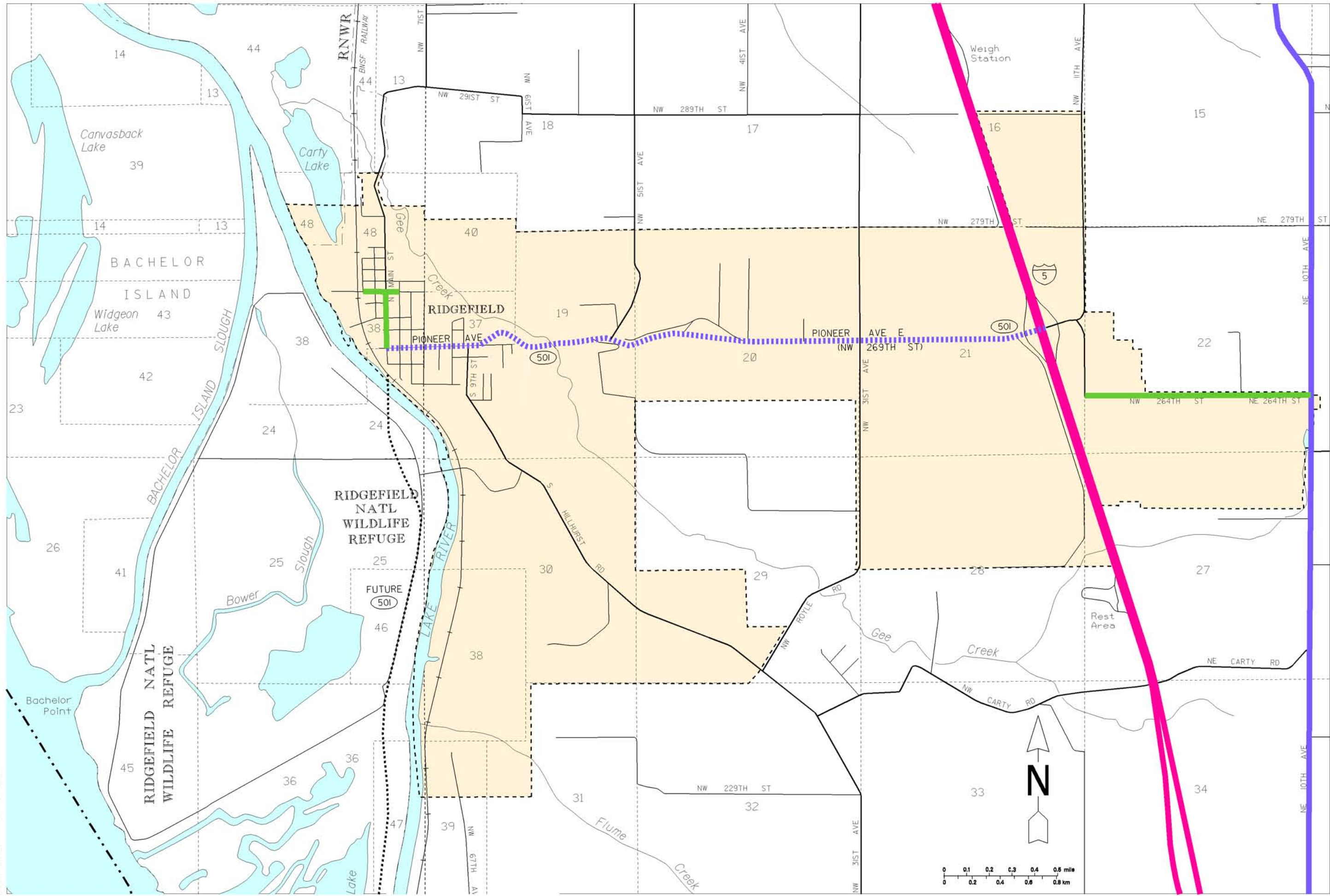


PLOT DATE: 30-NOV-2007



Freight and Goods Transportation System

Roadways 2007

WASHINGTON STATE DEPARTMENT OF TRANSPORTATION

TONNAGE CLASS T1 - T5 ANNUAL TONS (in thousands)

- T1 (less than 10,000)
- T2 (10,000 to 10,000)
- T3 (100 to 1,000)
- T4 (100 to 200)
- T5 (less than 20 to 60 days)

No Seasonal Weight Restrictions

Seasonal Weight Restrictions

CLARK

RIDGEFIELD

CLARK COUNTY

