

Four-laning US Highway 12

WHAT HAS BEEN SPENT SO FAR?

Phase 1 – COMPLETED - July 2004

Four-laning McNary Pool to Attalia
Total Project Cost \$11.2 million

Phase 2 – COMPLETED - November 2005

Four-laning SR 124 to McNary Pool
Total Project Cost \$12.1 million

Phase 3 – COMPLETED - September 2007

Four-laning Attalia Vicinity
Total Project Cost \$16.0 million

Phase 4 – COMPLETED - February 2010

Wallula Junction to Walla Walla Corridor Study
Total Project Cost \$5.4 million

Phase 5 – COMPLETED - February 2010

Attalia Vicinity to US 730 - Preliminary Design Only
Total Cost \$0.8 million

Phase 6 – COMPLETED July 2010

Four-laning Frenchtown Vicinity to Walla Walla
Estimated Total Project Cost \$51.9 million

US 12/SR 124 Intersection – COMPLETED May 2012

Build new interchange at US 12 and SR 124
Build new overpass at Humorist Road
Estimated Total Project Cost \$21.3 million

WHAT WILL IT COST?

Phase 7 FUNDED

Nine Mile Hill to Frenchtown Vicinity
Total Project Cost - **Funded** \$140.1 million
Planned Construction Start - Spring 2019
((\$134.8 million funded by 2015 Connecting Washington Revenue Package and \$5.3 million is pre-existing funds)

Phase 8 – Design and Right of Way FUNDED

Wallula to Nine Mile Hill
Design and Right of Way - **Funded** \$ 34.0 million
(Funded by 2015 Connecting Washington Revenue Package)

Construction - **Unfunded** \$146.0 million
Estimated Total Project Cost \$180.0 million

Americans with Disabilities Act (ADA) Information

Materials can be provided in alternative formats: large print, Braille, cassette tape, or on computer disk for people with disabilities by calling the Office of Equal Opportunity (OEO) at (360) 705-7097. Persons who are deaf or hard of hearing may contact OEO through the Washington Relay Service at 7-1-1.

These US Highway 12 projects are funded by the following:

- 2003 Nickel Gas Tax
- 2005 Transportation Partnership Account (TPA)
- Pre-existing Funds
- Federal Appropriations
- 2015 Connecting Washington Revenue Package

To reach the US Highway 12 Coalition contact:

Patrick Reay, Executive Director
Port of Walla Walla/US 12 Coalition
310 A Street
Walla Walla, WA 99362
509-525-3100
pr@portwallawalla.com

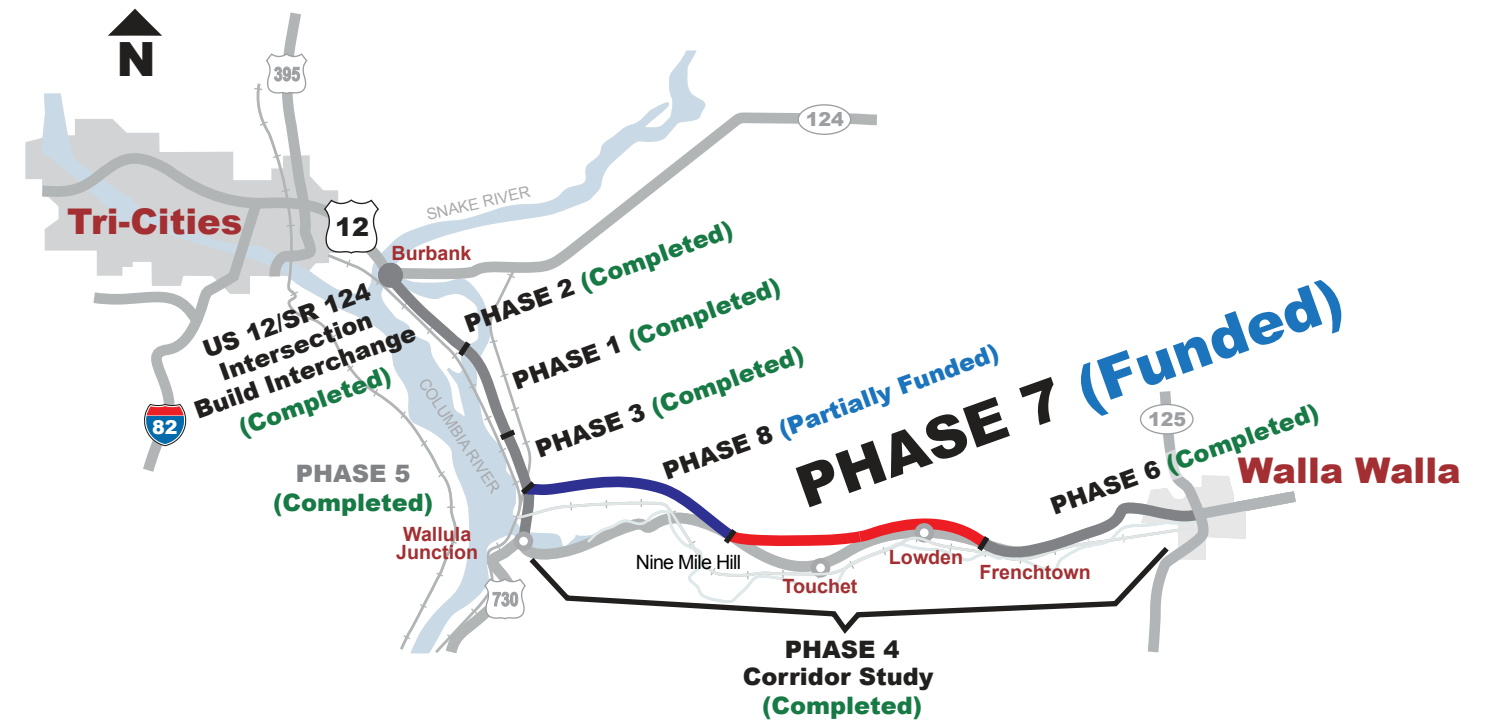
For design information contact:

Bob Hooker, Project Engineer
WSDOT – South Central Region
2809 Rudkin Road
Union Gap, WA 98903
509-577-1760
Bob.Hooker@wsdot.wa.gov
wsdot.wa.gov/projects/us12/ninemilehilltofrenchtown

12 Four-laning US Highway 12

Highlighting Phases 7 and 8

July 2017



US 12/SR 124 Intersection Build Interchange - \$21.3 million

PHASE 1 McNary Pool to Attalia - \$11.2 million

PHASE 2 SR 124 to McNary Pool - \$12.1 million

PHASE 3 Attalia Vicinity - \$16.0 million

PHASE 4 Wallula Junction to Walla Walla Corridor Study - \$5.4 million

PHASE 5 Attalia Vicinity to US 730 – Preliminary Design Only - \$0.8 million

PHASE 6 Frenchtown Vicinity to Walla Walla - \$51.9 million

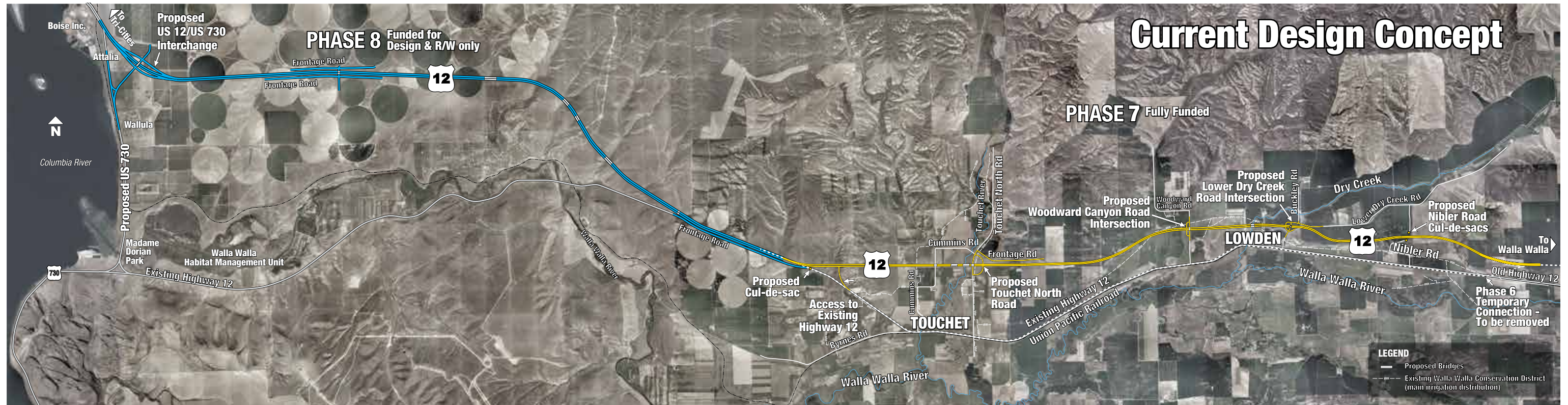
PHASE 7 **Nine Mile Hill to Frenchtown Vicinity - Funded \$140.1 million**

PHASE 8 Wallula to Nine Mile Hill - Design and Right of Way Funded - \$34.0 million

US 12 – Wallula to Frenchtown Vicinity – Add Lanes

Four-laning US Highway 12 (Phases 7 and 8)

July 2017



Corridor history

Since 2007, WSDOT and the US Highway 12 Coalition have worked toward four-laning US 12 from the Snake River near Burbank to Walla Walla. There has been significant progress improving this corridor for over 17 miles with about 21 miles remaining.

The Environmental Assessment (EA) for Phases 7 and 8 was complete in February 2010. The National Environmental Policy Act (NEPA) decision document was complete in September 2010. These environmental documents record the evaluation process used to select the preferred alternative for Phases 7 and 8. A reevaluation to the NEPA was completed in May 2015.

The US Highway 12 Coalition secured federal funds to begin design of Phase 7 from Nine Mile Hill to the Frenchtown vicinity and the 2015 Legislature provided the remaining funds as part of the Connecting Washington Revenue Package. Funding for design and right of way on Phase 8 were provided by the Connecting Washington Revenue Package as well. Construction on Phase 7 is planned to begin in 2019. A Public Open House will be held in Fall 2017.

What are the next steps?

- Open House Fall 2017
- Right-of-way Acquisition Nine Mile Hill to Woodward Canyon Road Summer 2017
- Right-of-way Acquisition Woodward Canyon Road to Frenchtown Spring 2018
- Construction 2019/2020

Nine Mile Hill to Frenchtown Vicinity (Phase 7)

Phase 7 is the portion of the project that is north of the communities of Touchet and Lowden. This project includes:

- Four intersections with local roads from west to east: with existing Highway 12 at the bottom of Nine Mile Hill, Touchet North Road, Woodward Canyon Road and Lower Dry Creek Road.
- Cul-de-sac at the end Nibler Road.

The proposed highway will cross over both the Touchet River and Dry Creek.

Wallula to Nine Mile Hill (Phase 8)

Phase 8 will complete the four-lane roadway from the Snake River area Burbank to Walla Walla, connecting at existing US 12 near Boise Inc. at Attalia. WSDOT plans to build the roadway north of the Walla Walla River and Wallula community.