



**Washington State
Department of Transportation**
Paula J. Hammond, P.E.
Secretary of Transportation

Transportation Building
310 Maple Park Avenue SE
Olympia, WA 98504-7300
360-705-7000
TTY: 1-800-833-6388
www.wsdot.wa.gov

March 25, 2011

Ms. Gail Terzi
US Army Corps of Engineers Seattle District
Regulatory Branch CENWS OD RG
PO Box 3755
Seattle, WA 98124-3755

RE: SR 270 Pullman to Idaho State Line (Jorstad, Sunshine, and Patterson) Mitigation Sites
USACE Permit Number 200500225

Dear Ms. Terzi:

The Washington State Department of Transportation completed qualitative monitoring of the State Route (SR) 270 Sunshine, Patterson, and Jorstad Mitigation Sites on May 4th and 5th, 2010 to qualitatively address Year-3 (2011) performance standards. Monitoring activities included vegetation observations and photo documentation. This Year-2 report is being issued to comply with Special Condition d of the USACE permit.

General Site Information				
USACE Permit Number		200500225		
Mitigation Location		All three sites are located south of SR 270 between mileposts 5 and 9, Whitman County		
Construction Date		2007-2009		
Monitoring Period		2009-2018		
Year of Monitoring		2 of 10		
Area of Project Impact		5.91 acres		
Type of Mitigation		Wetland Establishment	Wetland Enhancement	Riparian Enhancement
Area of Mitigation	Patterson	3.48 acres	0.12 acre	N/A
	Sunshine	2.90	N/A	N/A
	Jorstad	N/A	0.64 acre	2.09 acres

Summary of Monitoring Results and Management Activities

Performance Standards Year-3 (2011)	2010 Results			Management Activities
	Patterson	Sunshine	Jorstad	
Wetland Hydrology	Not present in all intended areas	Not present in all intended areas	N/A	
No more than 30% cover of specified non-native invasive species	Total invasive cover qualitatively estimated at < 5%	Total invasive cover qualitatively estimated at 20%	Total invasive cover qualitatively estimated at 5%	
Native woody species will maintain a density of four plants per 100 square feet in scrub-shrub and forested creation areas.	5 plants per 100 square feet (qualitative)	8 plants per 100 square feet (qualitative)	Riparian buffer: 7 plants per 100 square feet (qualitative)	
The native woody species will maintain a density of four plants per 100 square feet in buffer areas.	6 plants per 100 square feet (qualitative)	6 plants per 100 square feet (qualitative)	7 plants per 100 square feet (qualitative)	

How is the Site Developing?

Generally, planted woody vegetation is establishing successfully across all three sites. Since the weed fabric was in place at the time of monitoring, invasive cover is not an issue. However, the weed fabric at the Sunshine Road mitigation site was disturbed by floodwaters from Paradise Creek and invasive species, primarily reed canarygrass (*Phalaris arundinacea*), are present where the weed fabric was moved. Several additional bank failures have occurred on the Sunshine site and repair work is currently being planned. The entire weed mat has been removed from the Jorstad site. Hydrology is problematic on the two sites (Patterson and Sunshine) and was not present in all intended areas in 2010.

Results for Performance Standard 1 (Wetland hydrology):

Wetland hydrology was not present in all intended areas of the Patterson and Sunshine mitigations sites in 2010. One visit occurred during the early growing season and while a limited amount of inundation was observed (Photo 1), not all areas of either site met the wetland hydrology criteria in the performance standard.



Photo 1 – Inundation at the Patterson Site (May 2010)

Results for Performance Standard 2

(No more than 30% cover of specified non-native invasive species)

Invasive cover on all three sites is below the 30 percent threshold. The area that contains the highest cover of invasive species is the area of the Sunshine Road site where the weed fabric was disturbed by surface water. Reed canarygrass is present in this area and comprises approximately 20 percent of this site. Traces of Canada thistle (*Cirsium arvense*) are also present.

Results for Performance Standard 3

(Native woody species will maintain a density of four plants per 100 square feet in scrub-shrub and forested creation areas):

Due to the effectiveness of the weed fabric, woody species have successfully established across all three sites. The density of woody species in all wetland zones was estimated at 5 to 8 plants per 100 square feet. All of these density values are above the performance standard target. The dominant species observed in these zones is Drummond's willow (*Salix drummondiana*) (Photo 2).

Results for Performance Standard 4

(The native woody species will maintain a density of four plants per 100 square feet in buffer areas):

The density of woody species in the buffer zones of all three sites range from 6 to 7 plants per 100 square feet. All of these density values are above the performance standard target. Dominant species observed in these zones include golden currant (*Ribes aureum*) and Wood's rose (*Rosa woodsii*) (Photo 3).

For questions about this report or the mitigation sites please contact me at 360-570-6640 or by email at bush@wsdot.wa.gov.

Sincerely,

Tony Bush
Wetland Assessment and Monitoring Program



Photo 2 – Woody cover in the scrub-shrub wetland, Patterson Site (May 2010)

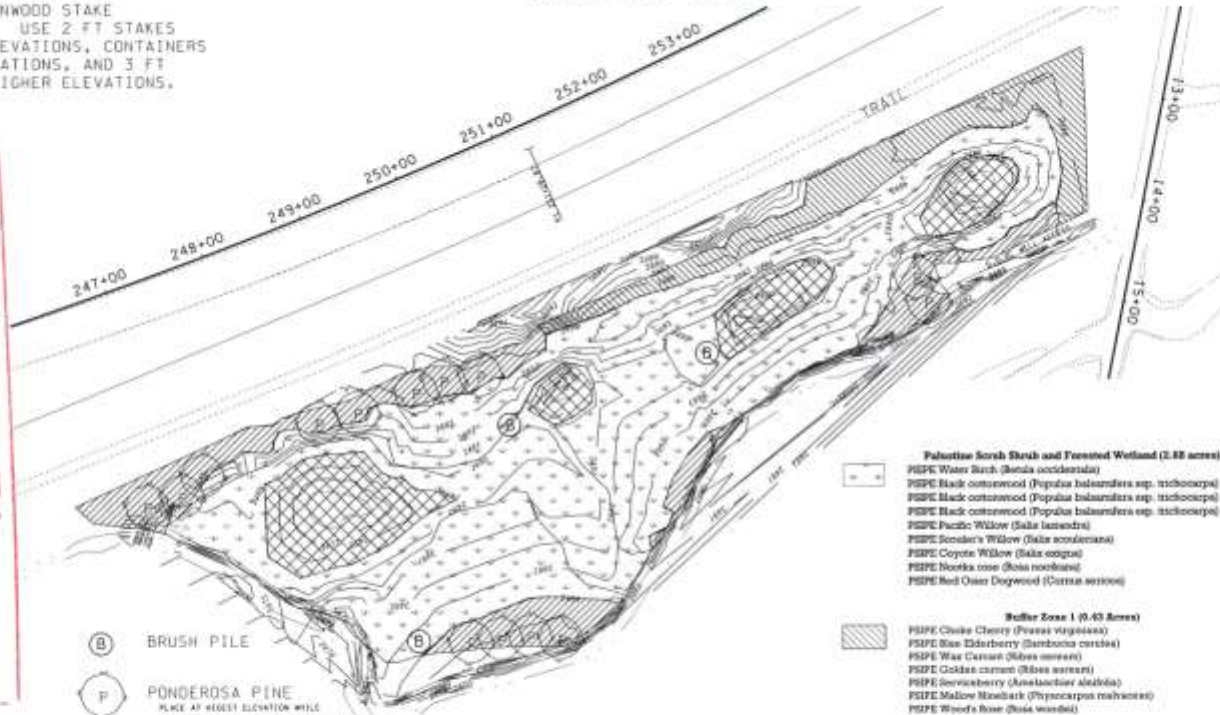


Photo 3 – Woody cover in the upland buffer, Sunshine Site (May 2010)

SUNSHINE MITIGATION SITE PLANTING PLAN

NOTE:
BLACK COTTONWOOD STAKE
SIZES VARY. USE 2 FT STAKES
AT LOWER ELEVATIONS, CONTAINERS
AT MID ELEVATIONS, AND 3 FT
STAKES AT HIGHER ELEVATIONS.

FOR "AS CONSTRUCTED
PLANS" ONLY



(B) BRUSH PILE
(P) PONDEROSA PINE
PLACE AT HIGHEST ELEVATION WHILE
MAINTAINING 50 FT FROM 675.177 LINE

Emergent Wetland (0.59 acres)			
Species	Spacing	Type	Quantity
HSPE Softstem Bulrush (<i>Scheuchzeria palustris</i>)	8.5 FT OC	30 cu. in.	160
HSPE Hardstem Bulrush (<i>Scheuchzeria palustris</i>)	8.5 FT OC	30 cu. in.	160
HSPE Dogleg Leaf Rush (<i>Juncus roemerianus</i>)	8.5 FT OC	30 cu. in.	160
HSPE Northern Rush (<i>Juncus arcticus</i>)	8.5 FT OC	30 cu. in.	160
HSPE Broad Leaf Arrow Head (<i>Sagittaria latifolia</i>)	8.5 FT OC	30 cu. in.	160

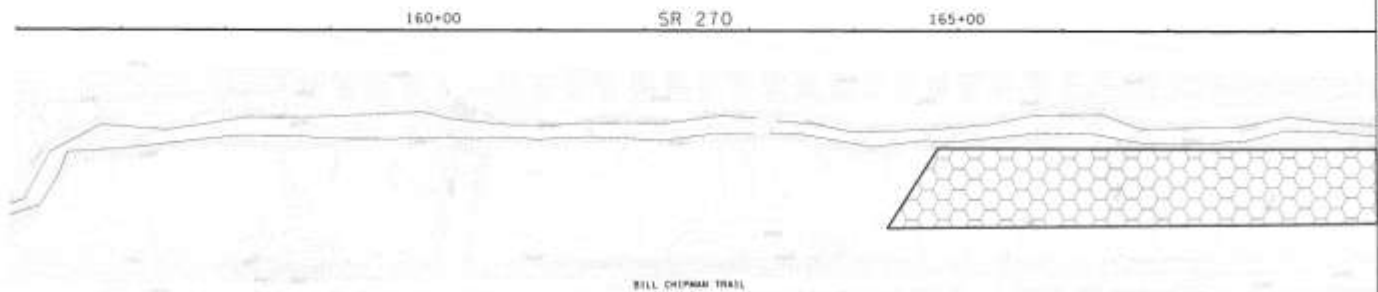
Palustrine Scrub Shrub and Forested Wetland (2.88 acres)			
Species	Spacing	Type	Quantity
HSPE Water Birch (<i>Betula occidentalis</i>)	8 FT OC	40 cu. in.	160
HSPE Black cottonwood (<i>Populus balsamifera</i> ssp. <i>trichocarpa</i>)	8 FT OC	40 cu. in.	30
HSPE Black cottonwood (<i>Populus balsamifera</i> ssp. <i>trichocarpa</i>)	8 FT OC	3 R Stake	160
HSPE Black cottonwood (<i>Populus balsamifera</i> ssp. <i>trichocarpa</i>)	8 FT OC	3 R Stake	74
HSPE Pacific Willow (<i>Salix lasioandra</i>)	8 FT OC	3 R Stake	160
HSPE Scudder's Willow (<i>Salix scouleriana</i>)	8 FT OC	3 R Stake	2,240
HSPE Coyote Willow (<i>Salix exigua</i>)	4 FT OC	40 cu. in.	1,280
HSPE Nookska rose (<i>Salix rooseana</i>)	4 FT OC	40 cu. in.	1,280
HSPE Red Osier Dogwood (<i>Cornus sericea</i>)	4 FT OC	40 cu. in.	1,280

Buffer Zone 1 (0.43 Acres)			
Species	Spacing	Type	Quantity
HSPE Choke Cherry (<i>Pyrus virginiana</i>)	8 FT OC	40 cu. in.	84
HSPE Blue Elderberry (<i>Sambucus cerulea</i>)	4 FT OC	40 cu. in.	310
HSPE Wax Currant (<i>Ribes cereum</i>)	4 FT OC	40 cu. in.	310
HSPE Golden currant (<i>Ribes aureum</i>)	4 FT OC	40 cu. in.	310
HSPE Serviceberry (<i>Amelanchier alabamica</i>)	4 FT OC	40 cu. in.	310
HSPE Malow Nutsedge (<i>Phytolacca maritima</i>)	4 FT OC	40 cu. in.	310
HSPE Wood's Rose (<i>Rosa woodsii</i>)	4 FT OC	40 cu. in.	310

Buffer Zone 2 (0.58 Acres)			
Species	Spacing	Type	Quantity
HSPE Douglas Hawthorne (<i>Crataegus douglasii</i>)	8 FT OC	40 cu. in.	1,280
HSPE Quaking Aspen (<i>Populus tremuloides</i>)	8 FT OC	1 Gal.	160
HSPE Wood's Rose (<i>Rosa woodsii</i>)	4 FT OC	40 cu. in.	160
HSPE Serviceberry (<i>Amelanchier alabamica</i>)	4 FT OC	40 cu. in.	160
HSPE Common Snowberry (<i>Symphoricarpos albus</i>)	4 FT OC	40 cu. in.	160
HSPE Mock Orange (<i>Philadelphus lewisii</i>)	4 FT OC	40 cu. in.	160

FILE NAME: C:\44207\2100 - Pullman to Idaho State Line\change drawings\2100\SUNSHINE planting plan and book protection.dwg	DATE: 6/4/11 AM	CO. #17 SHEET REVISION: 4/1007 SS	FED. AID PROJ. NO.:	STATE OF WASHINGTON REGISTERED LANDSCAPE ARCHITECT MARK W. MALICK CERTIFICATE NO. 00588	Washington State Department of Transportation	SR 270 PULLMAN TO IDAHO STATE LINE SUNSHINE MITIGATION SITE	SCALE: 1" = 100'
DESIGNED BY: K. SALIBURY	DATE: 10/8/2008	REVISION: _____ DATE: _____	JOB NUMBER: _____				SCALE: 1" = 100'

JORSTAD MITIGATION SITE PLANTING PLAN

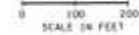




WEST END OF SITE (33,350 SF)

	Spacing	Type	Quantity
PIPE Black Cottonwood (<i>Populus balsamifera</i> ssp. <i>trichocarpa</i>)	8 FT OC	3 ft Stake	62
PIPE Choke Cherry (<i>Prunus virginiana</i>)	8 FT OC	40 CU. IN.	330
PIPE Blue Elderberry (<i>Sambucus cerulea</i>)	4 FT OC	40 CU. IN.	330
PIPE Wax Currant (<i>Ribes cereum</i>)	4 FT OC	40 CU. IN.	330
PIPE Golden Currant (<i>Ribes aurum</i>)	4 FT OC	40 CU. IN.	330
PIPE Sarsaparilla (<i>Amaranthus albidifolia</i>)	4 FT OC	40 CU. IN.	330
PIPE Mallow Ninebark (<i>Physocarpus malvastrum</i>)	4 FT OC	40 CU. IN.	330
PIPE Wood's Rose (<i>Rosa woodii</i>)	4 FT OC	40 CU. IN.	330

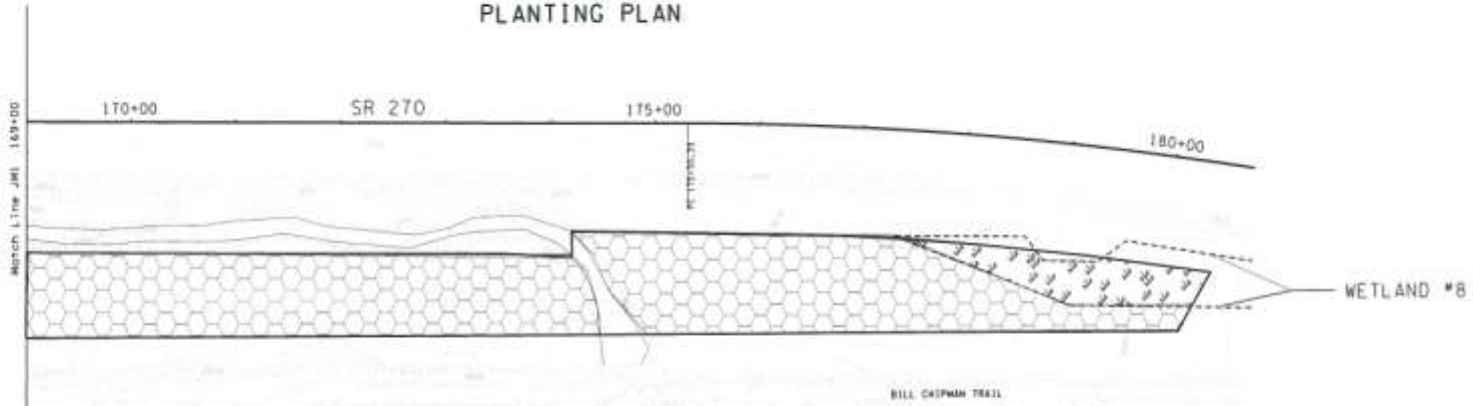
LEGEND

WETLAND BOUNDARY




<p>FILE NAME: G:\404307\AM\Proj\SR 270 S Lines\ dgn_3_lines\jorstad\text_3_lines_1600_1600.dwg TIME: 6:47:19 AM DATE: 10/6/2019 PLOTTED BY: Hoover DESIGNED BY: S. SALSBURY ENTERED BY: S. SALSBURY CHECKED BY: M. MAURER PROJ. ENGR: C. SIMONSON, PE REGIONAL ADM: J.C. LENZI, PE</p>	<p>REVISION</p> <table border="1" style="width: 100%; border-collapse: collapse;"> <tr> <th>NO.</th> <th>DATE</th> <th>BY</th> </tr> <tr> <td> </td> <td> </td> <td> </td> </tr> </table>	NO.	DATE	BY				<p>FED. AID PROJ. NO. IOWA WASH IOWA WASH L3502</p>	 <p>STATE OF WASHINGTON REGISTERED LANDSCAPE ARCHITECT MARK W. MAURER CERTIFICATE NO. 000388</p>	 <p>Washington State Department of Transportation</p>	<p>SR 270 PULLMAN TO IDAHO STATE LINE JORSTAD MITIGATION SITE</p>	<p>PL 0112 JMI 277 10/11</p>
NO.	DATE	BY										

JORSTAD MITIGATION SITE PLANTING PLAN

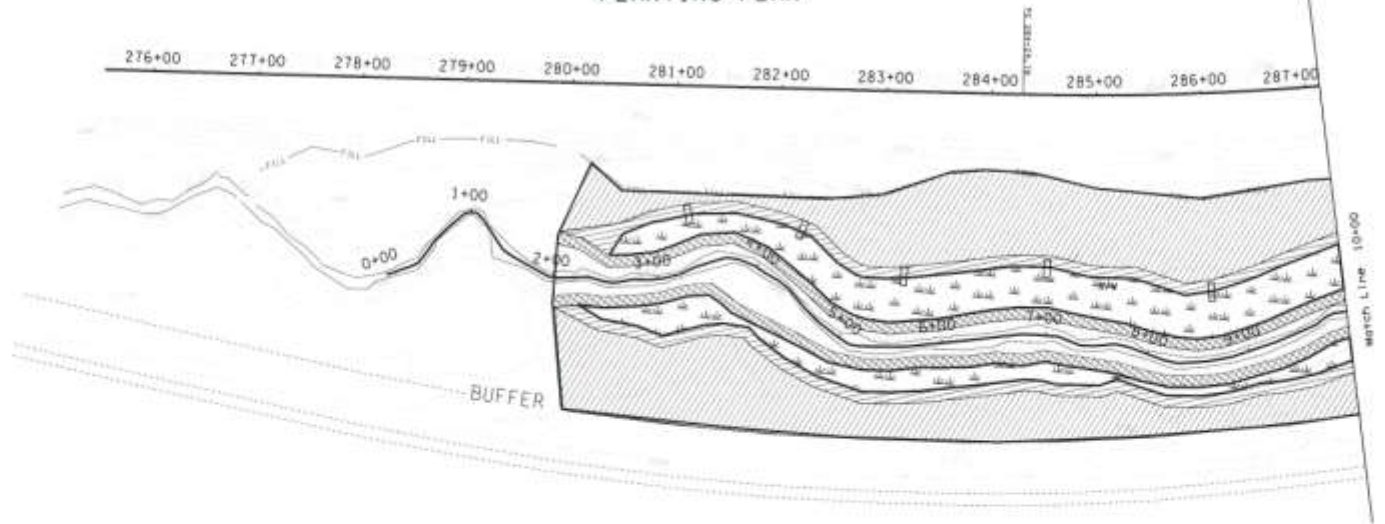


Plant Species	Spacing	Type	Quantity
Palatkae Scrub Shrub and Forested Wetland (1,220 SF)			
PSIFE Quaking Aspen (<i>Populus tremuloides</i>)	8 FT OC	1 Gal.	80
PSIFE Water Birch (<i>Betula occidentalis</i>)	8 FT OC	40 CU. IN.	80
PSIFE Douglas Hewthorn (<i>Catalpa douglasii</i>)	4 FT OC	40 CU. IN.	80
PSIFE Black Cottonwood (<i>Populus balsamifera</i> ssp. <i>trichocarpa</i>)	8 FT OC	28 Stakes	56
PSIFE Pacific Willow (<i>Salix lasiolepis</i>)	8 FT OC	28 Stakes	56
PSIFE Dracopis Willow (<i>Salix dracunculoides</i>)	4 FT OC	40 CU. IN.	100
PSIFE Coyote Willow (<i>Salix corymbosa</i>)	4 FT OC	40 CU. IN.	100
PSIFE Noddy Rose (<i>Rosa noddyana</i>)	4 FT OC	40 CU. IN.	100
PSIFE Red Ostr Dogwood (<i>Cornus sericea</i>)	4 FT OC	40 CU. IN.	100
WEST OF CREEK (18,976 SF)			
PSIFE Black Cottonwood (<i>Populus balsamifera</i> ssp. <i>trichocarpa</i>)	8 FT OC	28 Stakes	56
PSIFE Choke Cherry (<i>Prunus virginiana</i>)	8 FT OC	40 CU. IN.	385
PSIFE Blue Elderberry (<i>Sambucus cerulea</i>)	4 FT OC	40 CU. IN.	385
PSIFE Wax Currant (<i>Ribes cereum</i>)	4 FT OC	40 CU. IN.	385
PSIFE Golden Currant (<i>Ribes aureum</i>)	4 FT OC	40 CU. IN.	385
PSIFE Serviceberry (<i>Amelanchier alnifolia</i>)	4 FT OC	40 CU. IN.	385
PSIFE Malow Ninebark (<i>Physocarpus malvaceus</i>)	4 FT OC	40 CU. IN.	385
PSIFE Wood's Rose (<i>Rosa woodsii</i>)	4 FT OC	40 CU. IN.	385
EAST OF CREEK (16,520 SF)			
PSIFE Black Cottonwood (<i>Populus balsamifera</i> ssp. <i>trichocarpa</i>)	8 FT OC	28 Stakes	56
PSIFE Choke Cherry (<i>Prunus virginiana</i>)	8 FT OC	40 CU. IN.	355
PSIFE Blue Elderberry (<i>Sambucus cerulea</i>)	4 FT OC	40 CU. IN.	355
PSIFE Wax Currant (<i>Ribes cereum</i>)	4 FT OC	40 CU. IN.	355
PSIFE Golden Currant (<i>Ribes aureum</i>)	4 FT OC	40 CU. IN.	355
PSIFE Serviceberry (<i>Amelanchier alnifolia</i>)	4 FT OC	40 CU. IN.	355
PSIFE Malow Ninebark (<i>Physocarpus malvaceus</i>)	4 FT OC	40 CU. IN.	355
PSIFE Wood's Rose (<i>Rosa woodsii</i>)	4 FT OC	40 CU. IN.	355

LEGEND
 MITIGATION SITE BOUNDARY

<p>FILE NAME: C:\041303\14403-SR 270 & (area) (ign-1) area\plans\site_5 (area) 2002 Wetland Mitigation Plan.dgn TIME: 8:48:05 AM DATE: 10/8/2008 PLOTTED BY: hepper DESIGNED BY: S. SALISBURY ENTERED BY: S. SALISBURY CHECKED BY: M. MAURER PROJ. ENGR.: C. SIMONSON, PE REGIONAL ADM.: J.C. LINZEL, PE</p>	<p>REVISION: _____ DATE: _____ BY: _____</p>	<p>REG. NO. 10 WASH. JOB NUMBER L3502 CONTRACT NO. _____</p>	<p>FED. AID PROJ. NO. _____ STATE OF WASHINGTON REGISTERED LANDSCAPE ARCHITECT MARK W. MAURER CERTIFICATE NO. 000596</p>	 <p>Washington State Department of Transportation</p>	<p>SR 270 PULLMAN TO IDAHO STATE LINE</p> <p>JORSTAD MITIGATION SITE</p>	<p>PL 0713 JM2 V02 178 277 10/15</p>
--	--	--	--	--	--	--

PATTERSON MITIGATION SITE PLANTING PLAN



Emergent Wetland (112,86 SF)			
	Spacing	Type	Quantity
PSIFE Softstem Bulrush (<i>Scheuchzeria palustris</i>)	4 FT OC	20 cu. in.	247
PSIFE Hardstem Bulrush (<i>Scheuchzeria palustris</i>)	4 FT OC	20 cu. in.	247
PSIFE Dagger Leaf Rush (<i>Juncus ensifolius</i>)	4 FT OC	20 cu. in.	247
PSIFE Northern Rush (<i>Juncus arcticus</i>)	4 FT OC	20 cu. in.	247
PSIFE Broad Leaf Arrow Head (<i>Sagittaria latifolia</i>)	4 FT OC	20 cu. in.	247

Palustrine Scrub Shrub and Forested Wetland (34,835 SF)			
	Spacing	Type	Quantity
PSIFE Quaking Aspen (<i>Populus tremuloides</i>)	8 FT OC	1 Gal.	48
PSIFE Water Birch (<i>Betula occidentalis</i>)	8 FT OC	45 cu. in.	48
PSIFE Pacific Willow (<i>Salix lasandra</i>)	8 FT OC	2 R Stake	48
PSIFE Black Cottonwood (<i>Populus balsamifera</i> ssp. <i>trichocarpa</i>)	8 FT OC	2 R Stake	48
PSIFE Douglas Hawthorne (<i>Cornus douglasii</i>)	4 FT OC	40 cu. in.	370
PSIFE Drummond's Willow (<i>Salix drummondiana</i>)	4 FT OC	2 R Stake	370
PSIFE Coyote Willow (<i>Salix nigra</i>)	4 FT OC	40 cu. in.	370
PSIFE Nootka Rose (<i>Rosa acutata</i>)	4 FT OC	40 cu. in.	370
PSIFE Red Osier Dogwood (<i>Cornus sericea</i>)	4 FT OC	40 cu. in.	370

Buffer Zone 1 (42,583 SF)			
	Spacing	Type	Quantity
PSIFE Choke Cherry (<i>Prunus virginiana</i>)	8 FT OC	40 cu. in.	30
PSIFE Black cottonwood (<i>Populus balsamifera</i> ssp. <i>trichocarpa</i>)	8 FT OC	3 R Stake	78
PSIFE Blue Elderberry (<i>Sambucus cerulea</i>)	4 FT OC	40 cu. in.	186
PSIFE Wax Currant (<i>Ribes cereum</i>)	4 FT OC	40 cu. in.	186
PSIFE Golden currant (<i>Ribes aureum</i>)	4 FT OC	40 cu. in.	186
PSIFE Serviceberry (<i>Amelanchier alnifolia</i>)	4 FT OC	40 cu. in.	186
PSIFE Mallow Ninebark (<i>Physocarpus opulifolius</i>)	4 FT OC	40 cu. in.	186

Buffer Zone 2 (14,404 SF)			
	Spacing	Type	Quantity
PSIFE Black Cottonwood (<i>Populus balsamifera</i> ssp. <i>trichocarpa</i>)	8 FT OC	3 R Stake	41
PSIFE Woods Rose (<i>Rosa woodsii</i>)	4 FT OC	40 cu. in.	1,220
PSIFE Serviceberry (<i>Amelanchier alnifolia</i>)	4 FT OC	40 cu. in.	1,220
PSIFE Common Snowberry (<i>Symphoricarpos albus</i>)	4 FT OC	40 cu. in.	1,220
PSIFE Mock Orange (<i>Philadelphus lewisii</i>)	4 FT OC	40 cu. in.	1,220

LEGEND

MITIGATION SITE BOUNDARY

LARGE WOODY DEBRIS (As stated by the engineer)

0 50 100
SCALE IN FEET

FILE NAME: 2010WETLANDMITIGATION_270_PullmanToIdahoStateLine	DATE: 01/21/11 AM	DESIGNED BY: S. SALISBURY	ENTERED BY: S. SALISBURY	CHECKED BY: M. MAURER	PROJ. ENGR.: C. SIMONSON, PE	REGIONAL ADM.: J.C. LENZI, PE
DATE: 10/8/2008	PLOTTED BY: hoover	DESIGNED BY: S. SALISBURY	ENTERED BY: S. SALISBURY	CHECKED BY: M. MAURER	PROJ. ENGR.: C. SIMONSON, PE	REGIONAL ADM.: J.C. LENZI, PE
DATE: 10/8/2008	PLOTTED BY: hoover	DESIGNED BY: S. SALISBURY	ENTERED BY: S. SALISBURY	CHECKED BY: M. MAURER	PROJ. ENGR.: C. SIMONSON, PE	REGIONAL ADM.: J.C. LENZI, PE
DATE: 10/8/2008	PLOTTED BY: hoover	DESIGNED BY: S. SALISBURY	ENTERED BY: S. SALISBURY	CHECKED BY: M. MAURER	PROJ. ENGR.: C. SIMONSON, PE	REGIONAL ADM.: J.C. LENZI, PE

STATE OF WASHINGTON
REGISTERED
LANDSCAPE ARCHITECT

MARK W. MAURER
CERTIFICATE NO. 000598

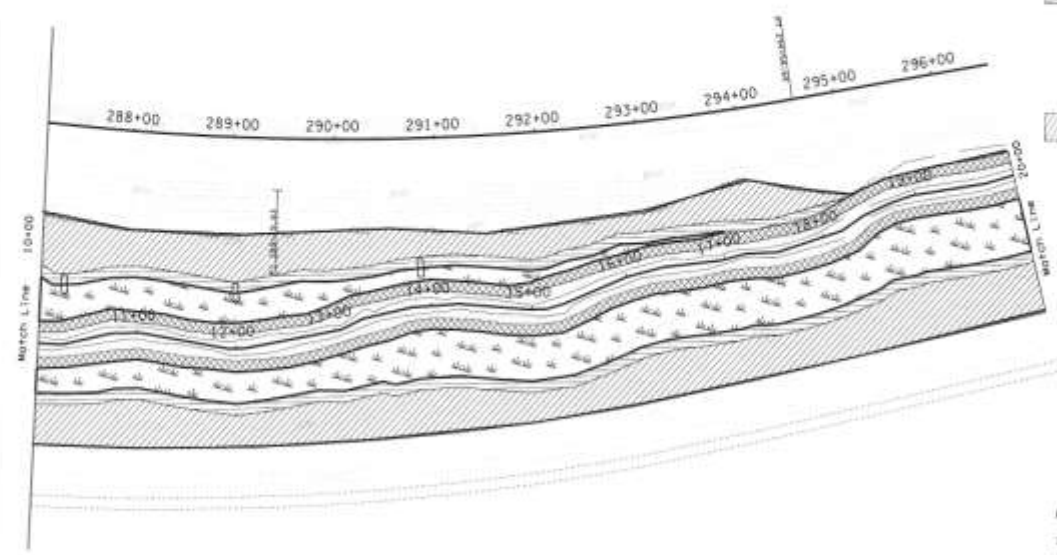
Washington State
Department of Transportation

SR 270
PULLMAN TO
IDAHO STATE LINE

PATTERSON MITIGATION SITE

PL113
PM1
181
277

PATTERSON MITIGATION SITE PLANTING PLAN



Emergent Wetland (20,295 SF)			
	Spacing	Type	Quantity
PSPE Softstem Bulrush (<i>Scheuchzeria palustris</i>)	4 FT OC	20 cu. in.	333
PSPE Hardstem Bulrush (<i>Scheuchzeria palustris</i>)	4 FT OC	20 cu. in.	333
PSPE Dagger Leaf Rush (<i>Juncus roemerianus</i>)	4 FT OC	20 cu. in.	333
PSPE Northern Rush (<i>Juncus roemerianus</i>)	4 FT OC	20 cu. in.	333
PSPE Broad Leaf Arrow Root (<i>Sagittaria latifolia</i>)	4 FT OC	20 cu. in.	333

Palustrine Scrub Shrub and Forested Wetland (21,127 SF)			
	Spacing	Type	Quantity
PSPE Quaking Aspen (<i>Populus tremuloides</i>)	8 FT OC	1 Cal.	33
PSPE Water Birch (<i>Betula occidentalis</i>)	8 FT OC	40 cu. in.	33
PSPE Pacific Willow (<i>Salix lasiolepis</i>)	8 FT OC	2.8 Stake	33
PSPE Black Cottonwood (<i>Populus balsamifera</i> ssp. <i>trichocarpa</i>)	8 FT OC	2.8 Stake	70
PSPE Douglas Hawthorne (<i>Crataegus douglasii</i>)	8 FT OC	40 cu. in.	66
PSPE Drummer's Willow (<i>Salix drummieri</i>)	4 FT OC	2.8 Stake	66
PSPE Coyote Willow (<i>Salix nigra</i>)	4 FT OC	40 cu. in.	66
PSPE Hondo rose (<i>Rosa occidentalis</i>)	4 FT OC	40 cu. in.	66
PSPE Red Deer Dogwood (<i>Cornus sericea</i>)	4 FT OC	40 cu. in.	66

Buffer Zone 1 (17,424 SF)			
	Spacing	Type	Quantity
PSPE Chinle Cherry (<i>Prunus virginiana</i>)	8 FT OC	40 cu. in.	33
PSPE Black Cottonwood (<i>Populus balsamifera</i> ssp. <i>trichocarpa</i>)	8 FT OC	2.8 Stake	33
PSPE Blue Elderberry (<i>Sambucus racemosa</i>)	4 FT OC	40 cu. in.	33
PSPE Wax Currant (<i>Ribes cereum</i>)	4 FT OC	40 cu. in.	33
PSPE Golden Currant (<i>Ribes aureum</i>)	4 FT OC	40 cu. in.	33
PSPE Serviceberry (<i>Amelanchier alabamica</i>)	4 FT OC	40 cu. in.	33
PSPE Malow Nutback (<i>Ostrya virginiana</i>)	4 FT OC	40 cu. in.	33



Buffer Zone 2 (61,423 SF)			
	Spacing	Type	Quantity
PSPE Black Cottonwood (<i>Populus balsamifera</i> ssp. <i>trichocarpa</i>)	8 FT OC	2.8 Stake	233
PSPE Woody Rose (<i>Rosa woodsii</i>)	4 FT OC	40 cu. in.	600
PSPE Serviceberry (<i>Amelanchier alabamica</i>)	4 FT OC	40 cu. in.	600
PSPE Common Honeysuckle (<i>Lonicera xylosteum</i>)	4 FT OC	40 cu. in.	600
PSPE Milk Orange (<i>Philadelphus lewisii</i>)	4 FT OC	40 cu. in.	600

LEGEND

MITIGATION SITE BOUNDARY ———

LARGE WOODY DEBRIS (As staked by the engineer) □

SCALE IN FEET

<p>FILE NAME: D:\44357\AAR\A\SR 270 3 Lines\op_3_lines\op\patt_mitigation_planting</p> <p>TIME: 6:45:51 AM</p> <p>DATE: 10/8/2004</p> <p>PLOTTED BY: HOSKOT</p> <p>DESIGNED BY: S. SALISBURY</p> <p>ENTERED BY: S. SALISBURY</p> <p>CHECKED BY: M. MAUREN</p> <p>PROJ. ENGR.: C. SIMONSON, PE</p> <p>REGIONAL ADM.: J.C. LENZI, PE</p>	<p>REVISION</p> <p>DATE</p> <p>BY</p>	<p>WASH. STATE</p> <p>FED. AID PROJ. NO.</p> <p>IO WASH</p> <p>JOB NUMBER: L3502</p> <p>CONTRACT NO.</p> <p>OPERATOR NO.</p>	 <p>STATE OF WASHINGTON REGISTERED LANDSCAPE ARCHITECT</p> <p>MARK W. MALJOC CERTIFICATE NO. 00009</p>	 <p>Washington State Department of Transportation</p>	<p>SR 270 PULLMAN TO IDAHO STATE LINE</p> <p>PATTERSON MITIGATION SITE</p>	<p>PL011</p> <p>PM2</p> <p>182</p> <p>277</p> <p>100111</p>
--	---------------------------------------	--	--	--	--	---

