

# AIR QUALITY REGULATION UPDATES

**Clifford L Hall**  
Regional Coordinator  
Transportation Planning Office

**Paula Hammond**  
Secretary of Transportation

**Dave Dye**  
Deputy Secretary

**Steve Reinmuth**  
Chief of Staff

MPO/RTPO/WSDOT Coordinating Committee  
February 23, 2010



# Clean Air Act (CAA)



- Air Pollutants
- National Ambient Air Quality Standards (NAAQS)
- State Implementation Plan (SIP)
- Air Quality Conformity Determinations (AQCD)

# Air Quality Conformity Determinations

- MPOs Demonstrate Regional Conformity
  - Metropolitan Transportation Plans
  - Metropolitan Transportation Programs
  - Projects
- EPA Software
  - Mobile 6.2 (Current)
  - MOVES2010
- FHWA & FTA
  - Jointly issue Conformity Determinations

# Implications of a Conformity Lapse

- Consultation
- Governor Notification
- Projects
  - FHWA and FTA funding stopped
  - Interagency Consultation
  - Exemptions

# EPA Changes To NAAQS

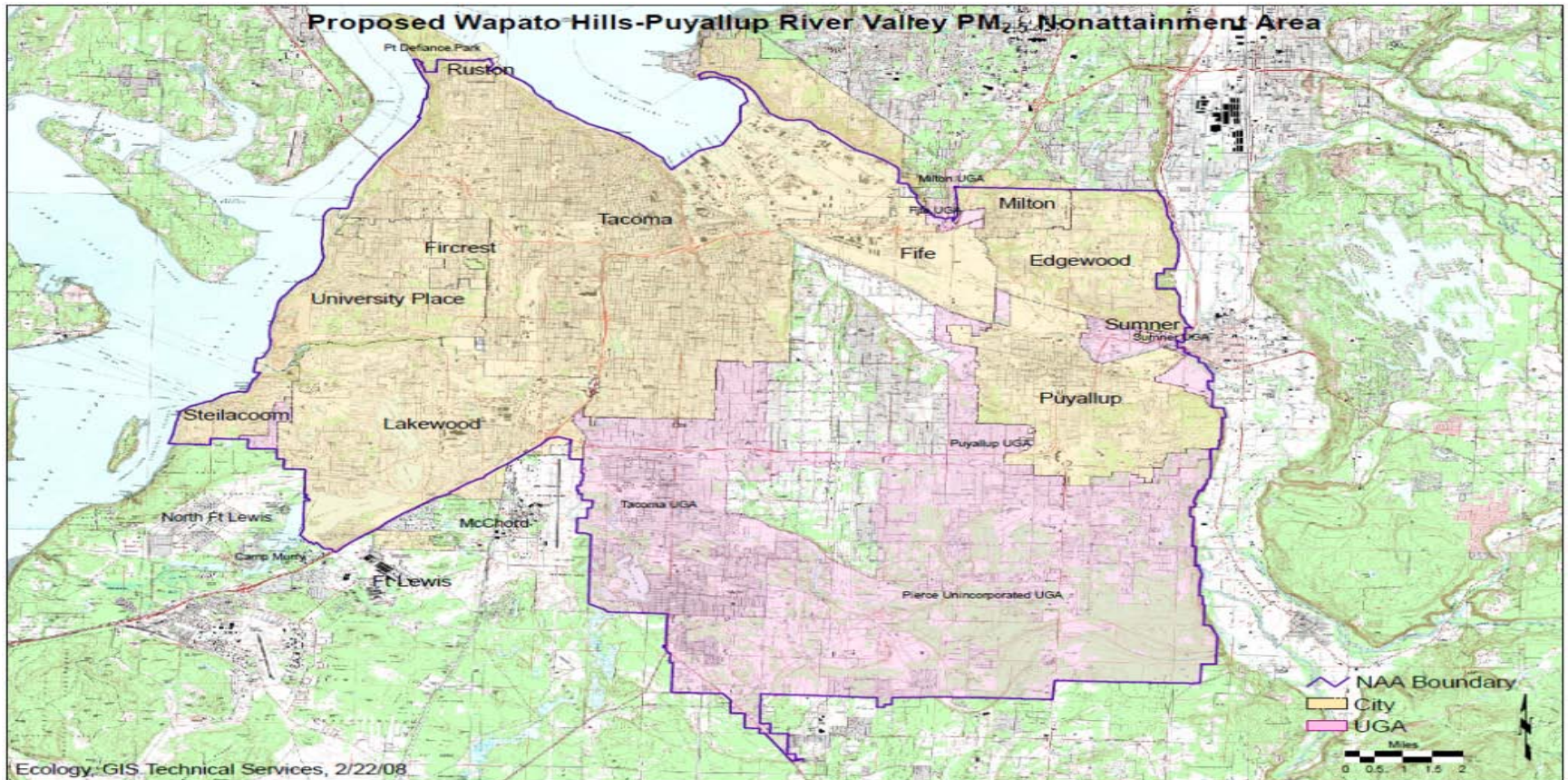
- $PM_{2.5}$
- $NO_2$
- $O_3$
- *MOVES*



# Particulate Matter (PM<sub>2.5</sub>)

- Final Rule Published 12/14/2009
- PM less than 2.5 microns
  - wood smoke
  - vehicle exhaust
- Two Standards:
  - 24-hour:
    - Old - 65 µg/m<sup>3</sup>
    - New - 35 µg/m<sup>3</sup>,
  - Annual: 15.0 µg/m<sup>3</sup>  
(no change)

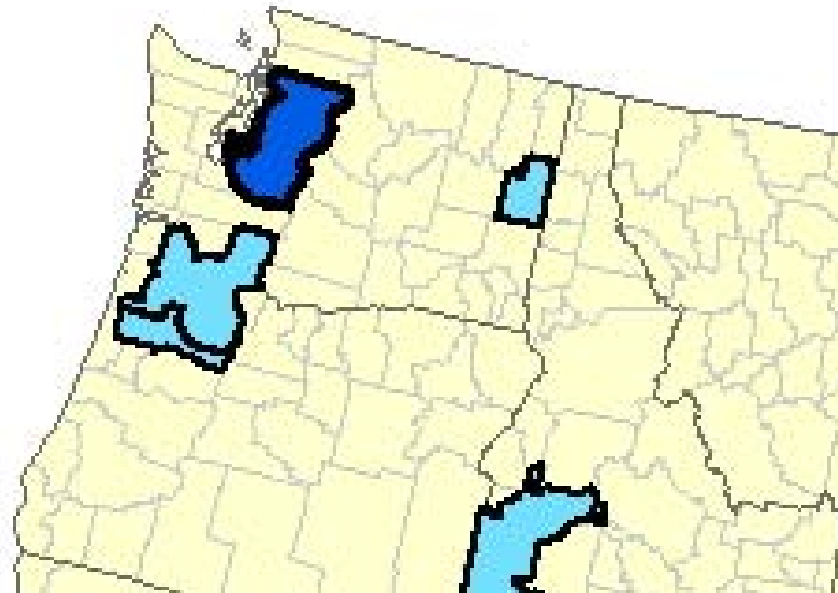
# Wapato Hills PM<sub>2.5</sub> Nonattainment Area



# Nitrogen Dioxide (NO<sub>2</sub>)

- Final Rule Published January 22, 2010
- Health Effects Recently Identified
- Two standards
  - 1-hour:
    - Old: None
    - New: 0.100 ppm
  - Annual: 0.053 ppm
- New modeling requirements
  - Near-road: <50 meters from road
  - Community monitors

## New Near-Road Modeling



Source: EPA

# Ozone (O<sub>3</sub>)

- Ozone NPRM issued January 6, 2010
- Final Rule expected May 2010
- Ground level O<sub>3</sub> (smog)
- Two Standards - *Proposed*
  - 8-hour:
    - Current – 0.75 ppm
    - New - 0.060 - 0.070 ppm
  - Seasonal:
    - Current – 0.75 ppm
    - New 7 – 15 ppm-hours



# What Counties Will Be Affected?

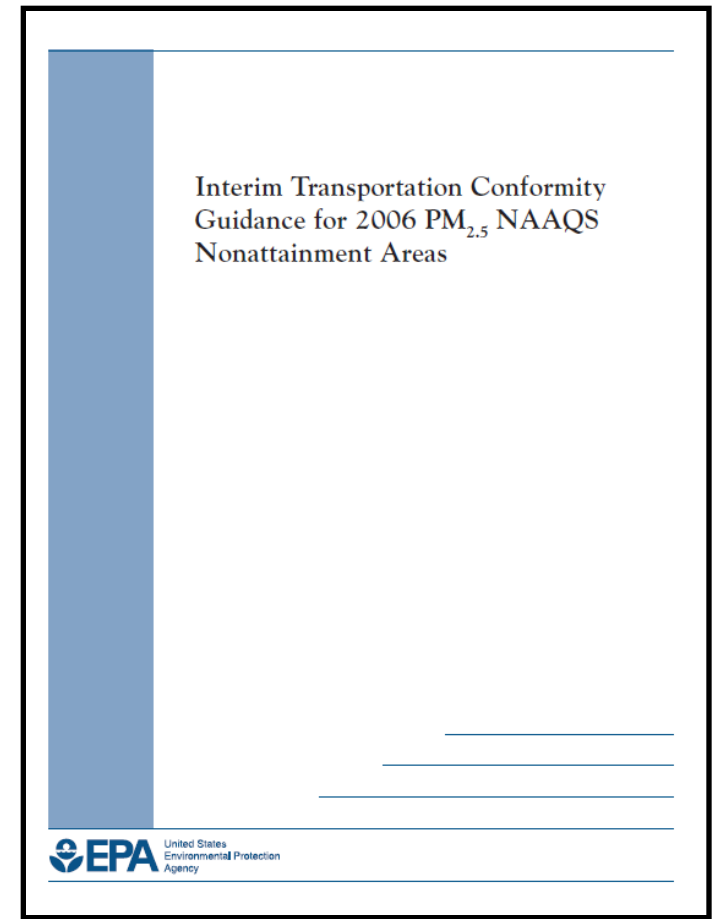
<b>County</b>	<b>O<sub>3</sub> Concentrations 3-Year Average (2006-2008)</b>
King	0.077 ppm
Pierce	0.070 ppm
Spokane	0.064 ppm
Clark	0.062 ppm
Thurston	0.061 ppm

# Motor Vehicle Emission Simulator (MOVES)

- EPA's new air quality modeling software
- Released to public, but official release pending
- Models regional and project-level air quality
- Replaces Mobile 6.2
- Required for:
  - State Implementation Plans (SIP)
  - Conformity Determinations

# What Does This Mean to Me?

- New conformity requirements
  - PM<sub>2.5</sub>: regional (plans & programs) and project-level (SEPA/NEPA documents)
  - O<sub>3</sub>: regional, project-level?
  - NO<sub>2</sub>: regional, project-level?
- Project Programming
  - Conforming areas: no action
  - Non-attainment areas:
    - New projects may be required to “attain” new standards
    - Air quality analysis for projects
    - Can’t degrade regional/local air quality



# Contacts

- Clifford L. Hall: Regional Coordinator, WSDOT TPO  
Phone: 360-705-7993  
e-mail: [hallcli@wsdot.wa.gov](mailto:hallcli@wsdot.wa.gov)
- Timothy V. Sexton: Air, Noise, and Energy Manager, WSDOT  
Environmental Services Office  
Phone: 206-440-4549  
e-mail: [sextont@wsdot.wa.gov](mailto:sextont@wsdot.wa.gov)
- Sidney W. Stecker: Transportation Planning Program Manager, Washington  
Division, FHWA  
Phone: 360-753-9555  
e-mail: [sidney.stecker@dot.gov](mailto:sidney.stecker@dot.gov)