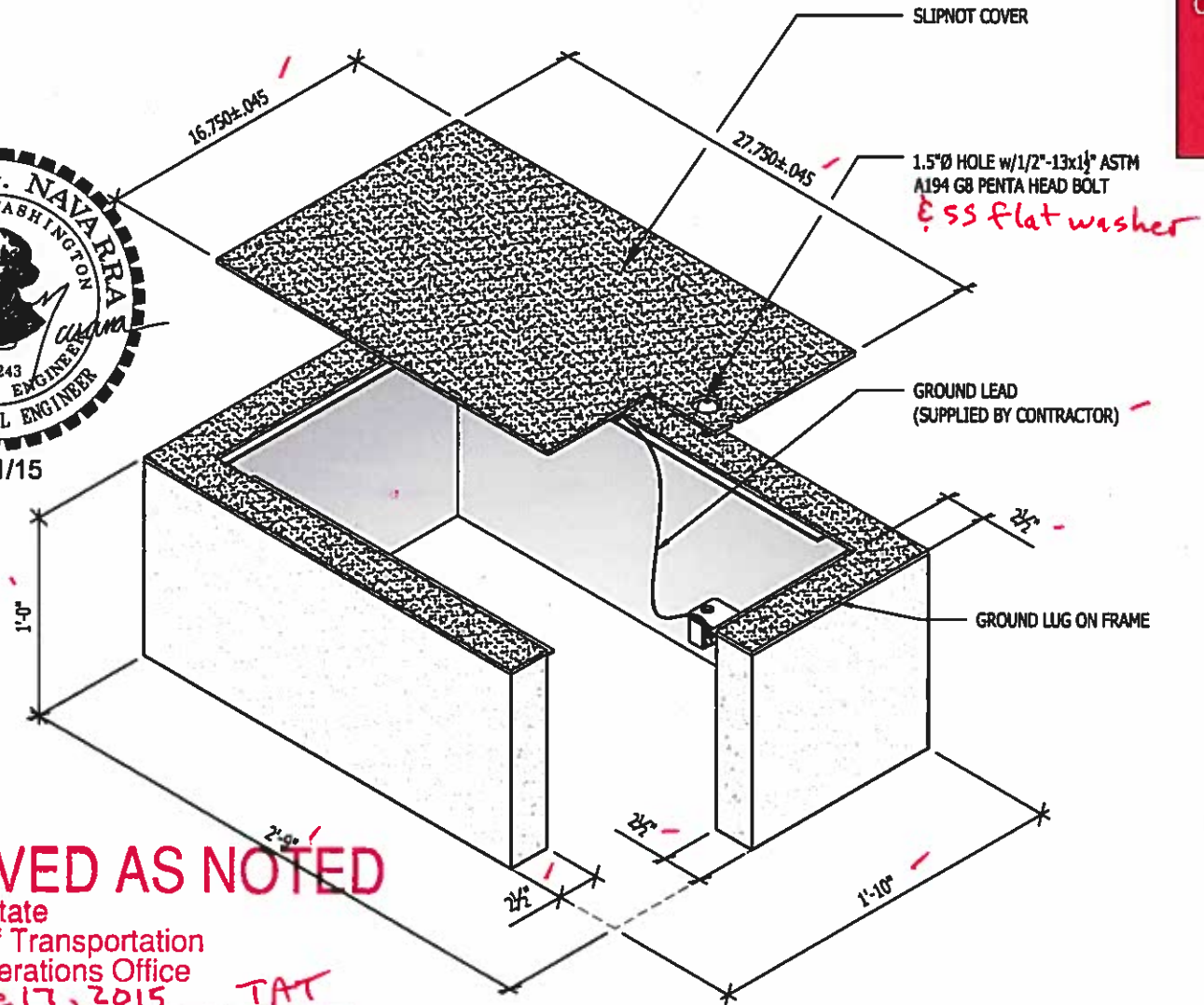
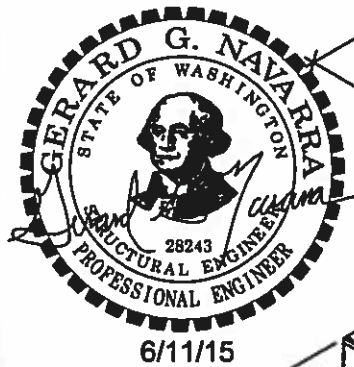


CHECK REQUIRED SPECIFICATION

STANDARD
WSDOT / STATE CONTRACT NUMBER _____
SLIPNOT
GALVANIZED DIAMOND PLATE
BLACK

GENERAL NOTES:
LID TO BE PER TRAVIS INDUSTRIES PRODUCT, PART NUMBERS:
716-WSDPT202 - DIAMOND PLATE
716S0029 (SN) - SLIPNOT
FRAME PART #
716-WSDOT201 - DIAMOND PLATE
716S0030 - SLIPNOT
CONCRETE w/FIBERMESH REINFORCING
f_c=4000 psi @28 days

lid & frame shall be hot-dip galvanized per 9-29.2 (1) A



APPROVED AS NOTED
Washington State
Department of Transportation
HQ Traffic Operations Office
DATE June 17, 2015 *TAT*

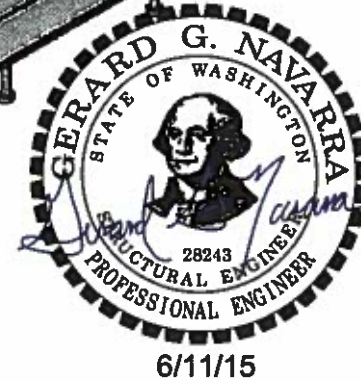
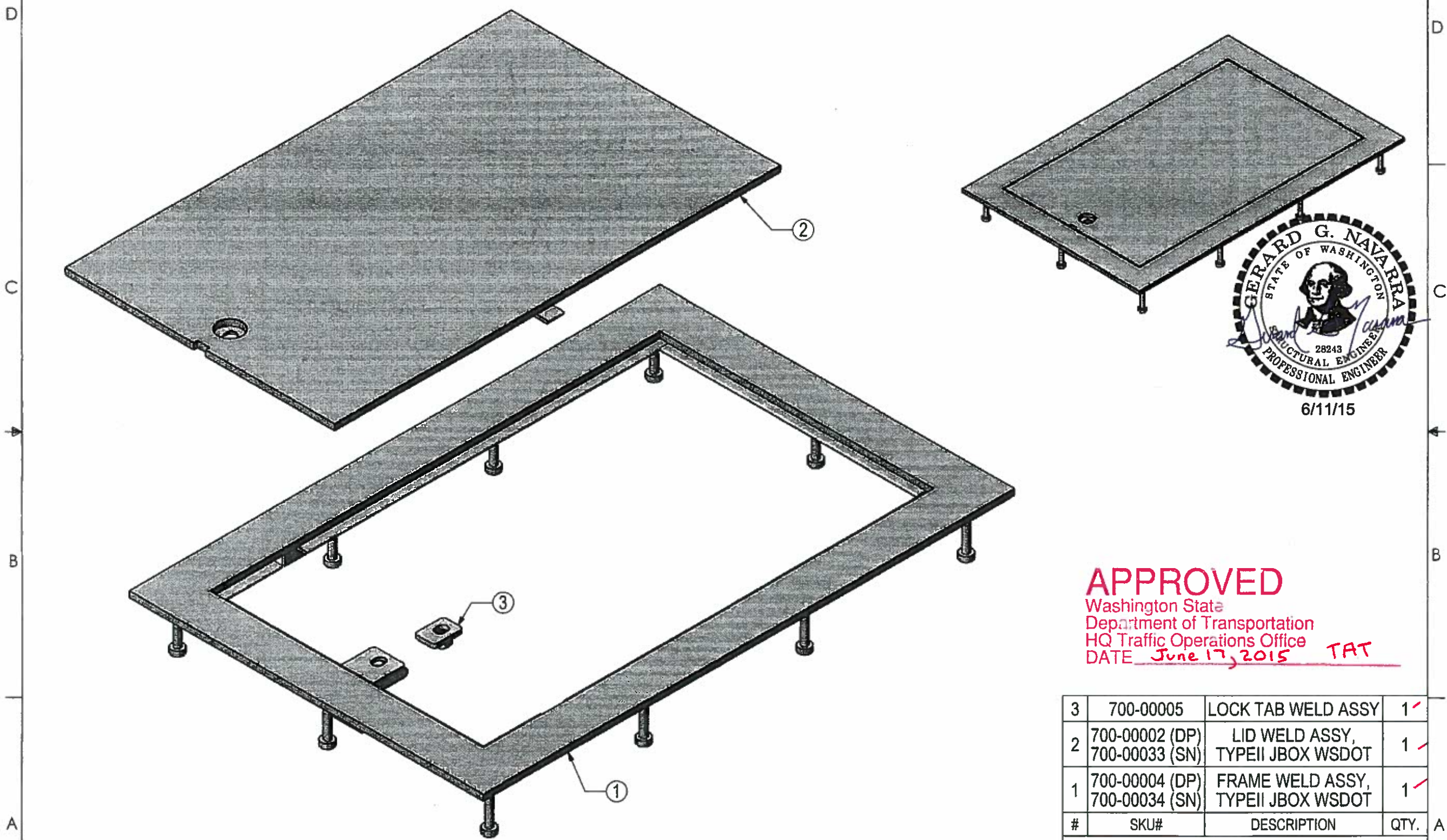
GENERAL NOTES:
THIS ASSEMBLY IS CONSTRUCTED AND TESTED TO CONFORM WITH WSDOT STANDARD SPECIFICATION 9-29.2(2), STANDARD DUTY JUNCTION BOXES

H² Pre-Cast Inc.
3835 N. Clemons
East Wenatchee, WA

Phone: (509) 884-6644
Fax: (509) 884-4567
Web: www.h2precast.com
© 2007 H² Pre-Cast Inc.

THE INFORMATION CONTAINED IN THIS DRAWING IS THE SOLE PROPERTY OF H² PRECAST INC. ANY REPRODUCTION IN PART OR WHOLE WITHOUT THE WRITTEN PERMISSION OF FM&M IS PROHIBITED.

This assembly is constructed and tested to conform with WSDOT Standard Specification 9-29.2(2), Standard Duty Junction Boxes.



APPROVED
 Washington State
 Department of Transportation
 HQ Traffic Operations Office
 DATE June 17, 2015 TAT

#	SKU#	DESCRIPTION	QTY.
3	700-00005	LOCK TAB WELD ASSY	1 ✓
2	700-00002 (DP) 700-00033 (SN)	LID WELD ASSY, TYPE II JBOX WSDOT	1 ✓
1	700-00004 (DP) 700-00034 (SN)	FRAME WELD ASSY, TYPE II JBOX WSDOT	1 ✓

PARTS LIST

Prepared for H² PRECAST INC.

TYPE II JBOX WSDOT

UNIVERSAL DRAWING:
 716-00002 WSDOT (DP)
 716-00013 WSDOT (SN)

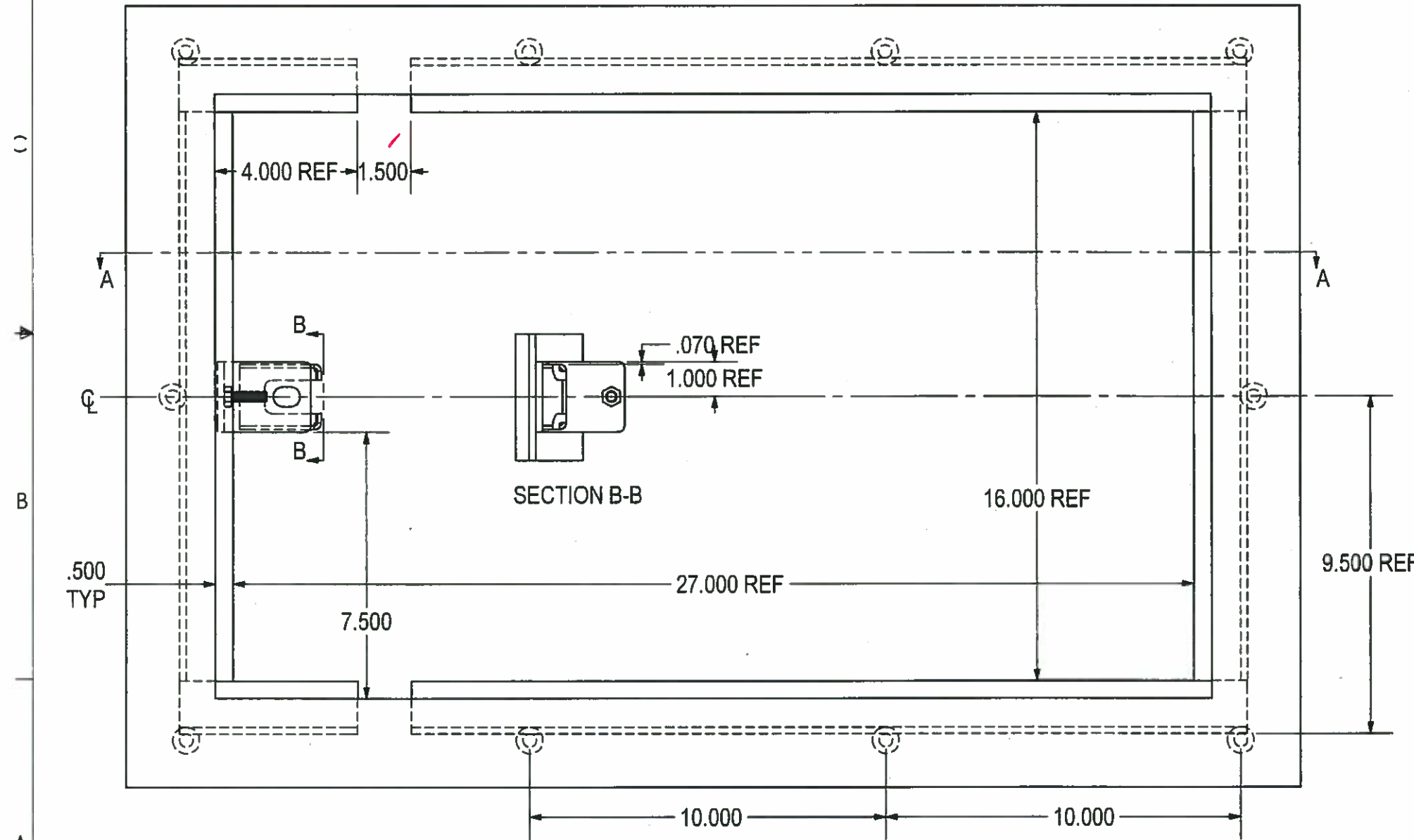
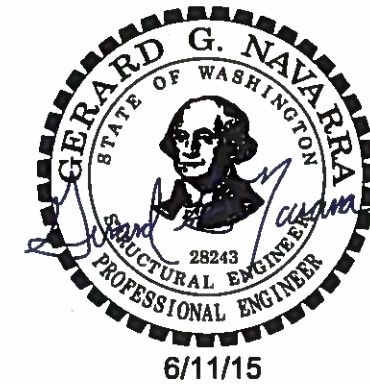
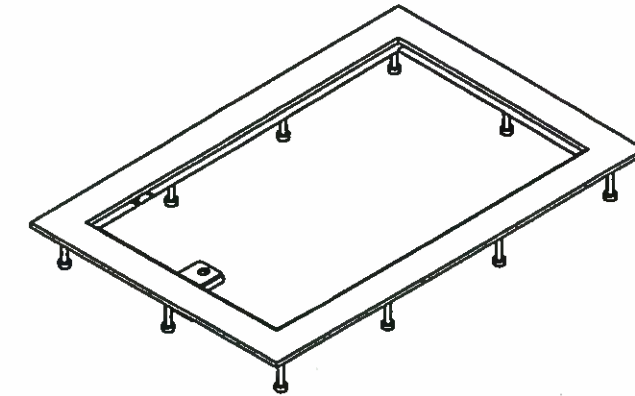
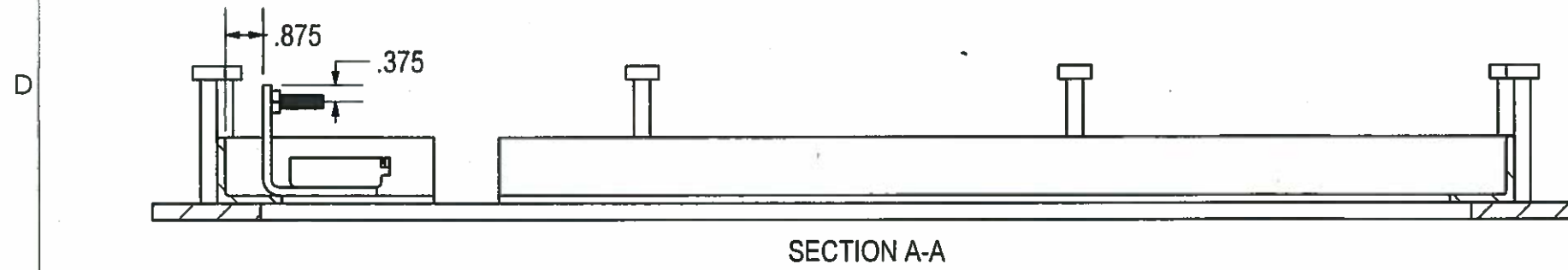
THIS DRAWING CREATED FOR MANUFACTURING REFERENCE ONLY AND IS NOT INTENDED TO SUPERCEDE H² PRECAST INC. DRAWINGS OR SPECIFICATIONS OF THE REFERENCED PART.

HOLES ± 0.030 X.XXX ± 0.060 ANGLES ± 1.0°	SIZE A	DRAWN BY: DREW KEIM	PROGRAM NUMBER: DATE CREATED: 5/22/14	REV.
SCALE: NONE			CAD FILE: TYPE II JBOX WSDOT	SHEET 1 of 1

THE INFORMATION CONTAINED IN THIS DRAWING IS THE SOLE PROPERTY OF H² PRECAST INC. ANY REPRODUCTION IN PART OR WHOLE WITHOUT THE WRITTEN PERMISSION OF FM&M IS PROHIBITED.

This assembly is constructed and tested to conform with WSDOT Standard Specification 9-29.2(2), Standard Duty Junction Boxes.

REV	DESCRIPTION	DATE	INITIALS
A	MODIFIED LATCH GUIDE & WELDING.	1/14	DK



APPROVED
 Washington State
 Department of Transportation
 HQ Traffic Operations Office
 DATE June 17, 2015 TAT

UNIVERSAL DRAWING:
 700-00004 WSDOT (DP)
 700-00034 WSDOT (SN)

ASS'Y DETAILS

THIS DRAWING CREATED FOR MANUFACTURING REFERENCE ONLY AND IS NOT INTENDED TO SUPERCEDE H² PRECAST INC. DRAWINGS OR SPECIFICATIONS OF THE REFERENCED PART.

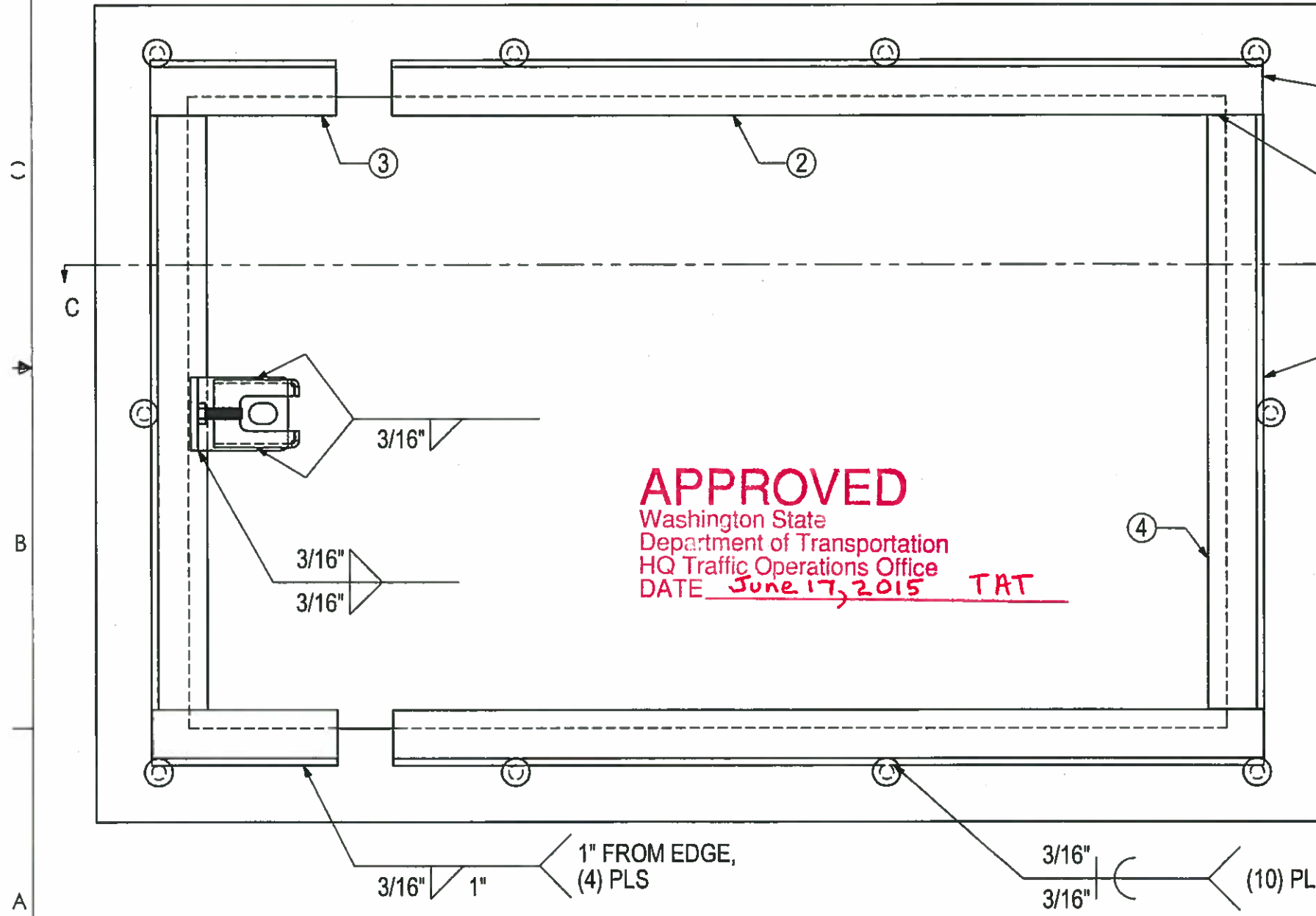
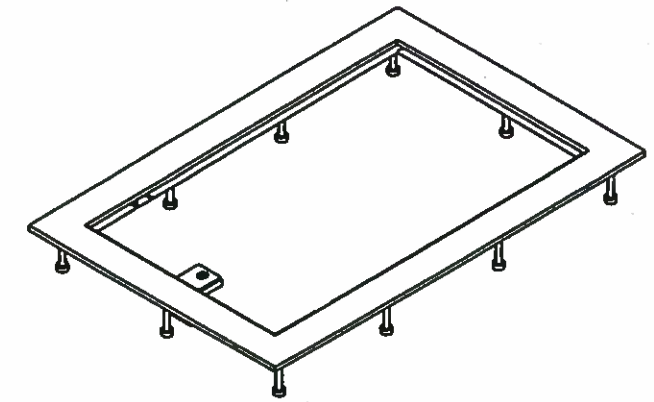
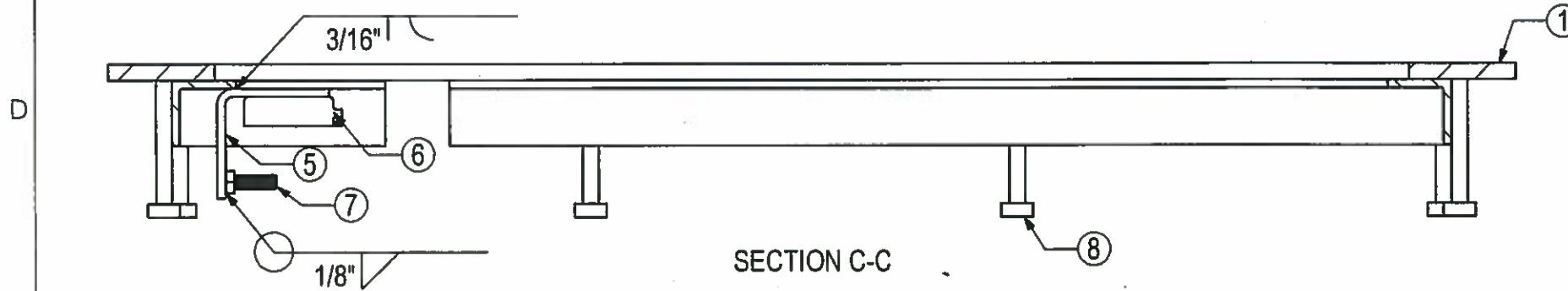
Prepared for H ² PRECAST INC.			
FRAME WELD ASSY, TYPE II JBOX WSDOT			
HOLES ± 0.030	SIZE A	DRAWN BY: DREW KEIM	PROGRAM NUMBER:
X.XXX ± 0.060			DATE CREATED: 4/29/14
ANGLES ± 1.0°			REVISION: A
SCALE: NONE CAD FILE: FRAME (A).T2 WSDOT			SHEET 1 of 2

8 | 7 | 6 | 5 | 4 | 3 | 2 | 1

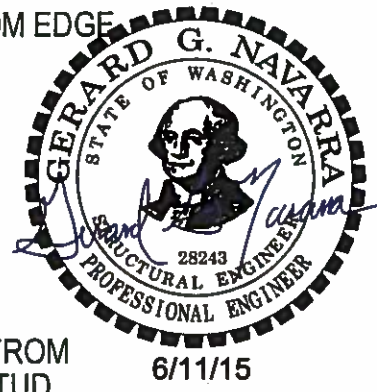
THE INFORMATION CONTAINED IN THIS DRAWING IS THE SOLE PROPERTY OF H² PRECAST INC. ANY REPRODUCTION IN PART OR WHOLE WITHOUT THE WRITTEN PERMISSION OF FM&M IS PROHIBITED.

This assembly is constructed and tested to conform with WSDOT Standard Specification 9-29.2(2), Standard Duty Junction Boxes.

REV	DESCRIPTION	DATE	INITIALS
A	MODIFIED LATCH GUIDE & WELDING.	1/14	DK



APPROVED
 Washington State
 Department of Transportation
 HQ Traffic Operations Office
 DATE June 17, 2015 TAT



#	SKU#	DESCRIPTION	MAT'L	QTY.
8	101-00575	WELD-STUD, 3/8x3-1/8	C1015	10
7	101-00271	Ø5/16-18X1" HHCS 316SS	316SS	1
6	716-L004	LATCH GUIDE	A36HR	1
5	716-L001	LATCH HOUSING	A36HR	1
4	211-02167	FRAME ANGLE, 1-1/2x1-1/2x3/16 x 16.000 LONG	A36HR	2
3	211-02164	FRAME ANGLE, 1-1/2x1-1/2x3/16 x 5.000 LONG	A36HR	2
2	211-01685	FRAME ANGLE, 1-1/2x1-1/2x3/16 x 23.500 LONG	A36HR	2
1	716-WSDOT201 716-S0030	FRAME, TII JBOX WSDOT (DP) FRAME, TII JBOX WSDOT (SN)	ASTM A786 FP	1

WELD DETAILS

UNIVERSAL DRAWING:
 700-00004 WSDOT (DP)
 700-00034 WSDOT (SN)

THIS DRAWING CREATED FOR MANUFACTURING REFERENCE ONLY AND IS NOT INTENDED TO SUPERCEDE H² PRECAST INC. DRAWINGS OR SPECIFICATIONS OF THE REFERENCED PART.

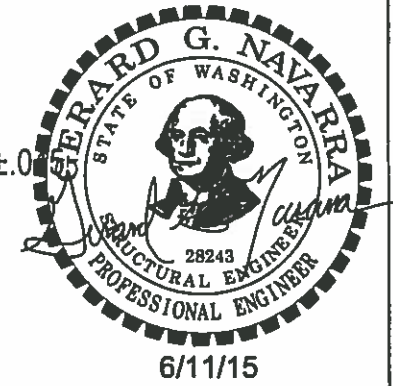
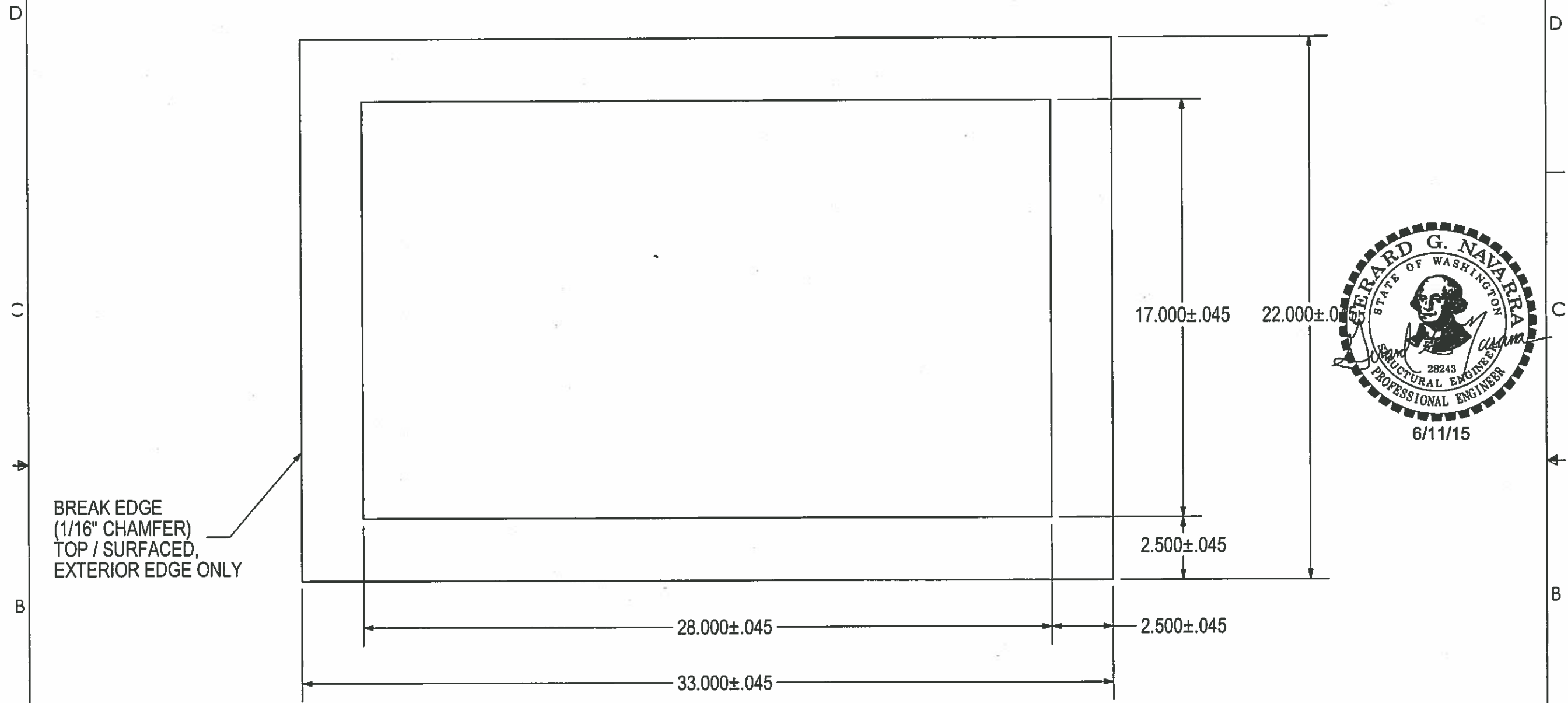
HOLES ± 0.030
 X.XXX ± 0.060
 ANGLES ± 1.0°

Prepared for H ² PRECAST INC.			
FRAME WELD ASSY, TYPE II JBOX WSDOT			
SIZE A	DRAWN BY: DREW KEIM	PROGRAM NUMBER: DATE CREATED: 4/29/14	REV. A
SCALE: NONE	CAD FILE: FRAME (A).T2 WSDOT	SHEET 2 of 2	

THE INFORMATION CONTAINED IN THIS DRAWING IS THE SOLE PROPERTY OF H² PRECAST INC. ANY REPRODUCTION IN PART OR WHOLE WITHOUT THE WRITTEN PERMISSION OF FM&M IS PROHIBITED.

This assembly is constructed and tested to conform with WSDOT Standard Specification 9-29.2(2), Standard Duty Junction Boxes.

REV	DESCRIPTION	DATE	INITIALS
A	ADDED CHAMFER NOTE TO DRAWING	7/1/14	DK



APPROVED
 Washington State
 Department of Transportation
 HQ Traffic Operations Office
 DATE June 17, 2015 TAT

3/8 DIAMOND PLATE / SLIPNOT (ASTM A786 FLOOR PLATE)
 33.000 X 22.000
 (1) REQ'D

UNIVERSAL DWG / PART:
 716-WSDOT201 (DIAMOND PLATE)
 WSDOT - TYPE II J-BOX
 716-S0030 (SLIPNOT PLATE)
 SDOT - TYPE II J-BOX
 WSDOT - TYPE II J-BOX

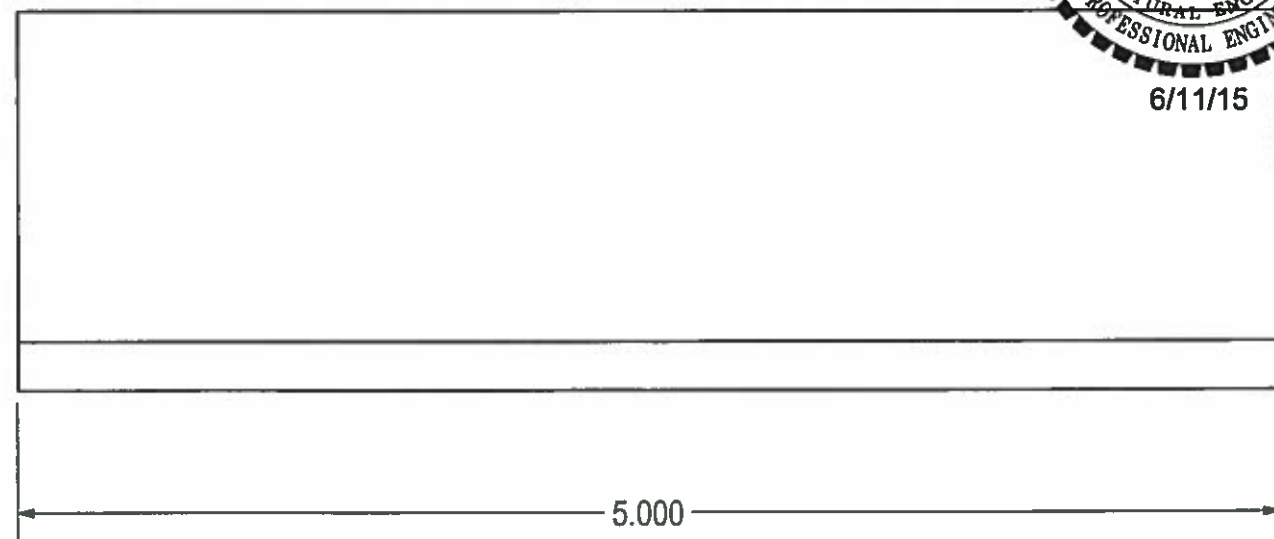
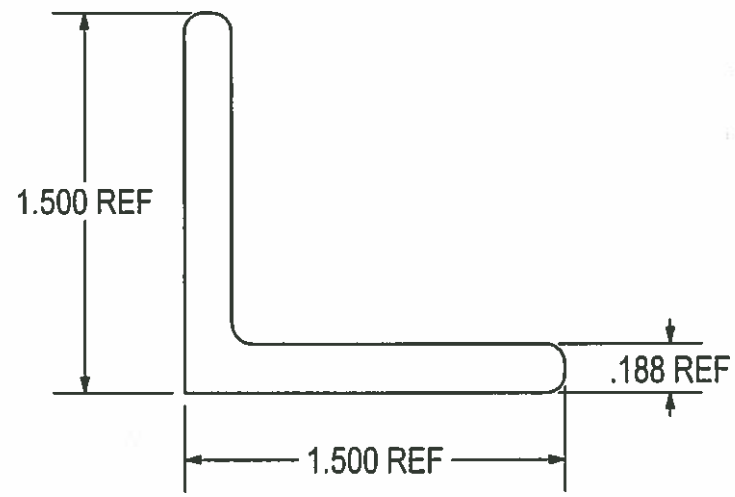
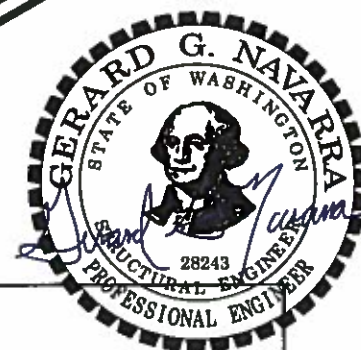
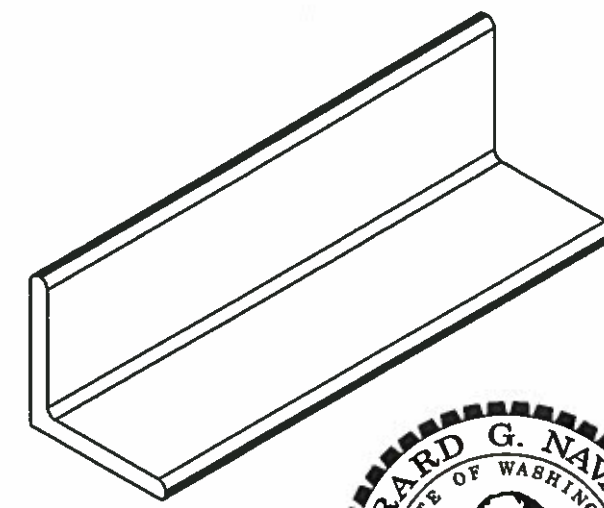
Prepared for H ² PRECAST INC.			
FRAME			
SIZE A	DRAWN BY: DREW KEIM	PROGRAM NUMBER: DATE CREATED: 5/31/12	REV. A
SCALE: NONE	CAD FILE: 716-S0030A	SHEET	OF

THIS DRAWING CREATED FOR MANUFACTURING REFERENCE ONLY AND IS NOT INTENDED TO SUPERCEDE H² PRECAST INC. DRAWINGS OR SPECIFICATIONS OF THE REFERENCED PART.

THE INFORMATION CONTAINED IN THIS DRAWING IS THE SOLE PROPERTY OF H² PRECAST INC. ANY REPRODUCTION IN PART OR WHOLE WITHOUT THE WRITTEN PERMISSION OF FM&M IS PROHIBITED.

This assembly is constructed and tested to conform with WSDOT Standard Specification 9-29.2(2), Standard Duty Junction Boxes

REV	DESCRIPTION	DATE	INITIALS
A	3/16 THICKNESS WAS 1/4. UPDATED DESCRIPTION.	7/14	DK



APPROVED
 Washington State
 Department of Transportation
 HQ Traffic Operations Office
 DATE June 17, 2015 TAT

ANGLE, 1-1/2 x 1-1/2 x 3/16 X 5.000 LONG
 (2) REQ'D

THIS DRAWING CREATED FOR MANUFACTURING REFERENCE ONLY AND IS NOT INTENDED TO SUPERCEDE H² PRECAST INC. DRAWINGS OR SPECIFICATIONS OF THE REFERENCED PART.

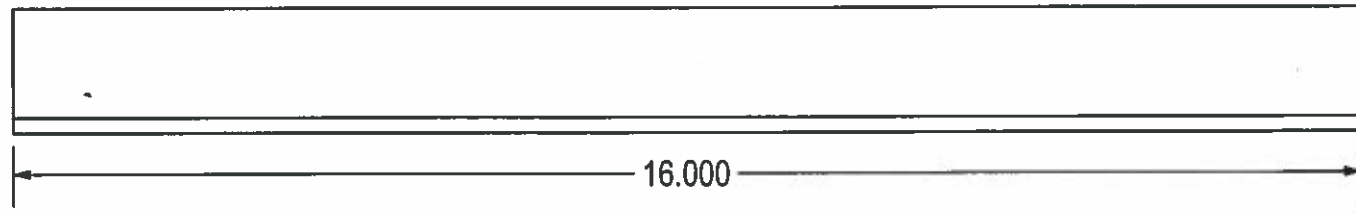
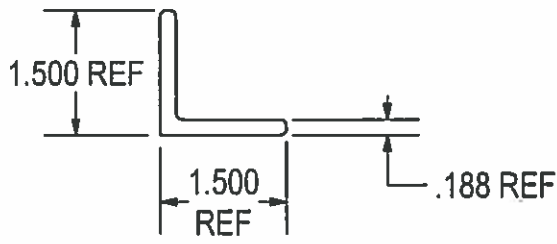
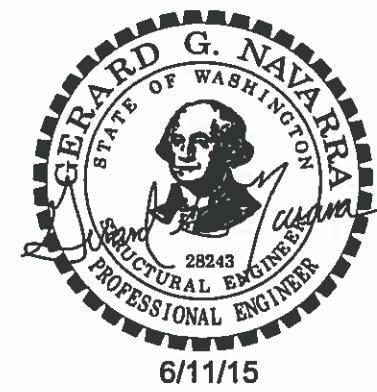
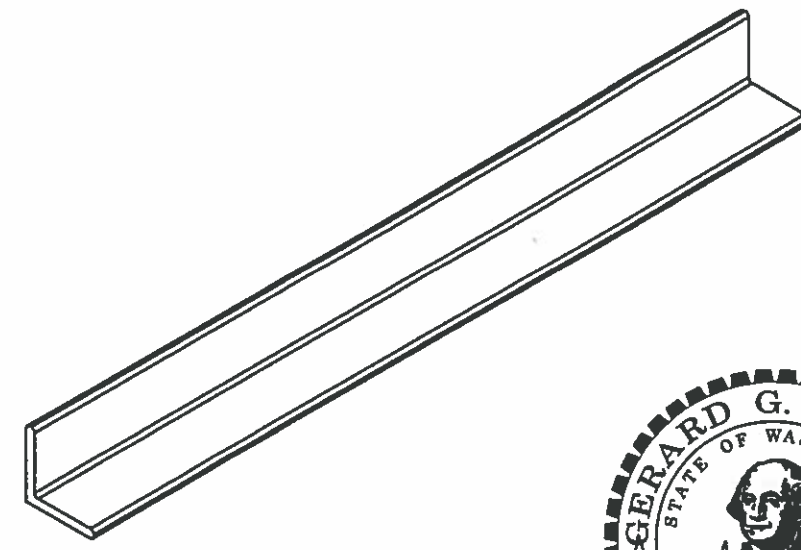
Prepared for H ² PRECAST INC.		FRAME ANGLE, 1-1/2x1-1/2x3/16 x 5.000 LONG	
SIZE A	DRAWN BY: DREW KEIM	PROGRAM NUMBER: 211-02164	REV. A
HOLES ± 0.030 X.XXX ± 0.060 ANGLES ± 1.0°		DATE CREATED: 5/7/14	
SCALE: NONE		CAD FILE: 716-F0055A	SHEET 1 of 1

8 1 7 1 6 1 5 1 4 1 3 1 2 1 1

THE INFORMATION CONTAINED IN THIS DRAWING IS THE SOLE PROPERTY OF H² PRECAST INC. ANY REPRODUCTION IN PART OR WHOLE WITHOUT THE WRITTEN PERMISSION OF FM&M IS PROHIBITED.

This assembly is constructed and tested to conform with WSDOT Standard Specification 9-29 2(2), Standard Duty Junction Boxes.

REV	DESCRIPTION	DATE	INITIALS
A	3/16 THICKNESS WAS 1/4. UPDATED DESCRIPTION.	7/1/14	DK



APPROVED
 Washington State
 Department of Transportation
 HQ Traffic Operations Office
 DATE June 17, 2015 TAT

ANGLE, 1-1/2 x 1-1/2 x 3/16 X 16.000 LONG
 (2) REQ'D

Prepared for H ² PRECAST INC.			
FRAME ANGLE, 1-1/2x1-1/2x3/16 x 16.000 LONG ✓			
SIZE A	DRAWN BY: DREW KEIM	PROGRAM NUMBER: 211-02167	REV. A
DATE CREATED: 5/7/14		SHEET 1 of 1	
SCALE: NONE		CAD FILE: 716-F0057A	

THIS DRAWING CREATED FOR MANUFACTURING REFERENCE ONLY AND IS NOT INTENDED TO SUPERCEDE H² PRECAST INC. DRAWINGS OR SPECIFICATIONS OF THE REFERENCED PART.

HOLES ± 0.030
 X.XXX ± 0.060
 ANGLES ± 1.0°

D
C
B
A

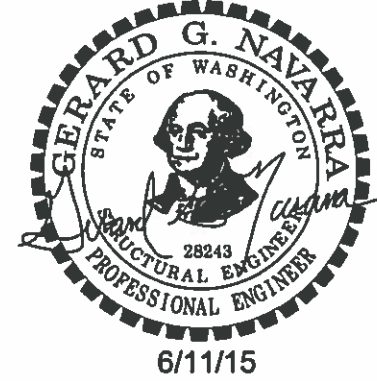
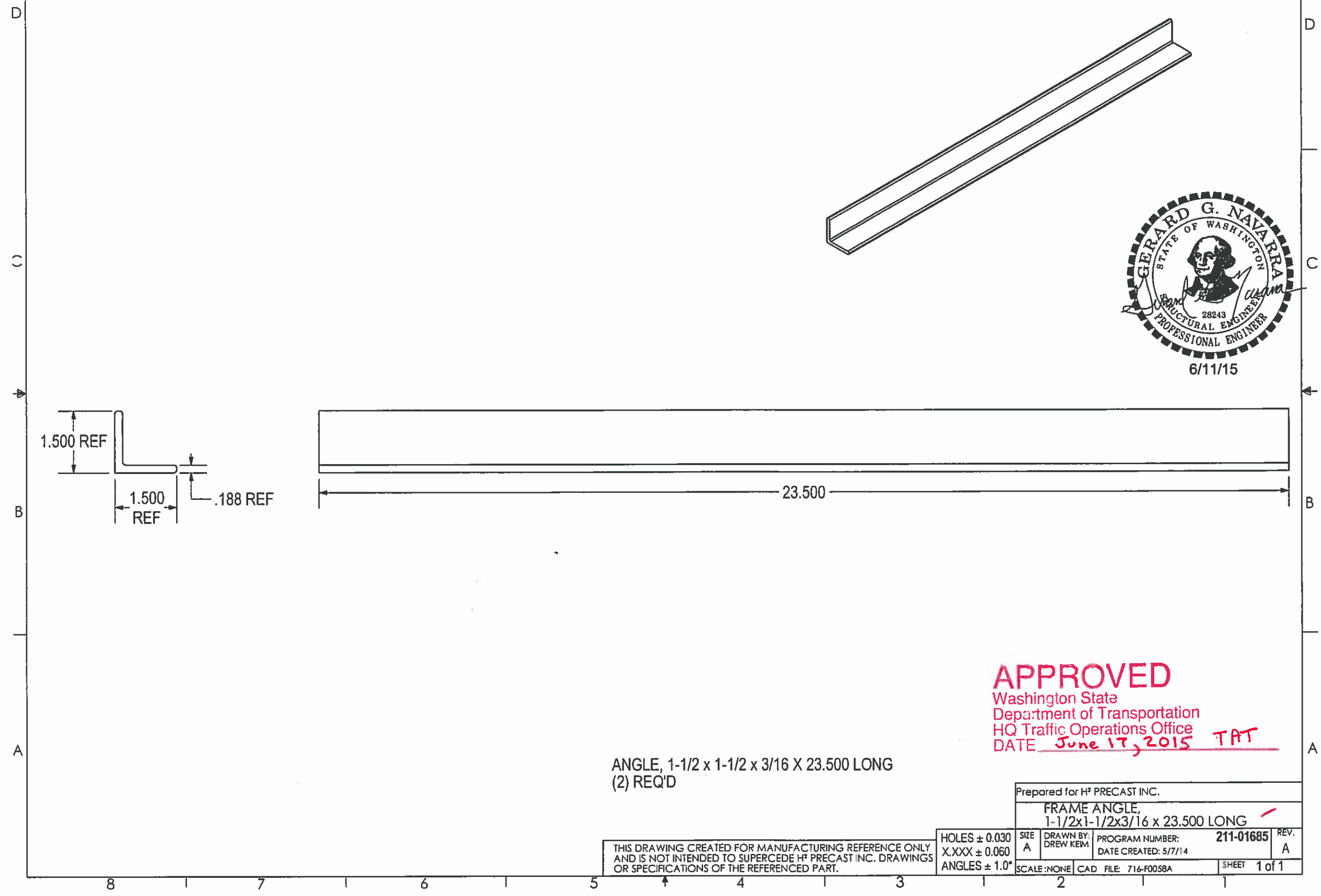
D
C
B
A

8 1 7 1 6 1 5 4 1 3 1 2 1

THE INFORMATION CONTAINED IN THIS DRAWING IS THE SOLE PROPERTY OF H² PRECAST INC. ANY REPRODUCTION IN PART OR WHOLE WITHOUT THE WRITTEN PERMISSION OF FM&M IS PROHIBITED.

This assembly is constructed and tested to conform with WSDOT Standard Specification 9-29.2(2), Standard Duty Junction Boxes.

REV	DESCRIPTION	DATE	INITIALS
A	3/16 THICKNESS WAS 1/4. UPDATED DESCRIPTION.	7/14	DK



APPROVED
 Washington State
 Department of Transportation
 HQ Traffic Operations Office
 DATE June 17, 2015 TAT

ANGLE, 1-1/2 x 1-1/2 x 3/16 X 23.500 LONG
 (2) REQ'D

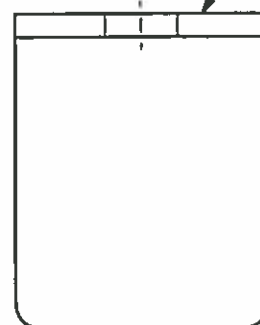
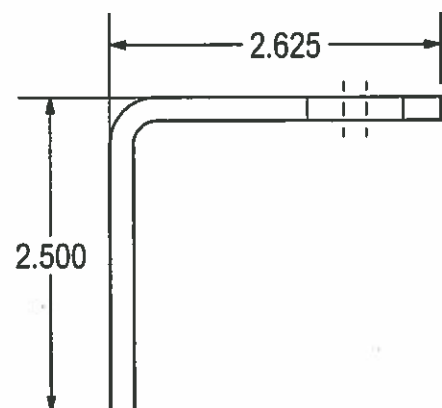
THIS DRAWING CREATED FOR MANUFACTURING REFERENCE ONLY AND IS NOT INTENDED TO SUPERCEDE H² PRECAST INC. DRAWINGS OR SPECIFICATIONS OF THE REFERENCED PART.

Prepared for H ² PRECAST INC.			
FRAME ANGLE, 1-1/2x1-1/2x3/16 x 23.500 LONG			
SIZE A	DRAWN BY: DREW KEIM	PROGRAM NUMBER: DATE CREATED: 5/7/14	211-01685
HOLES ± 0.030 X.XXX ± 0.060 ANGLES ± 1.0°		SCALE: NONE	CAD FILE: 716-F0058A
SHEET 1 of 1			REV. A

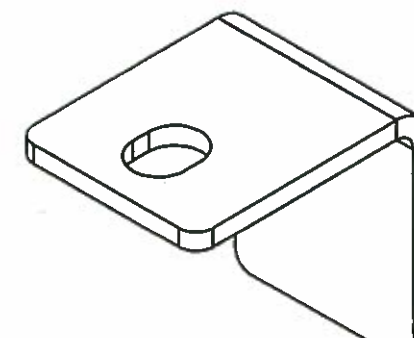
THE INFORMATION CONTAINED IN THIS DRAWING IS THE SOLE PROPERTY OF H² PRECAST INC. ANY REPRODUCTION IN PART OR WHOLE WITHOUT THE WRITTEN PERMISSION OF FM&M IS PROHIBITED.

This assembly is constructed and tested to conform with WSDOT Standard Specification 9-29.2(2), Standard Duty Junction Boxes.

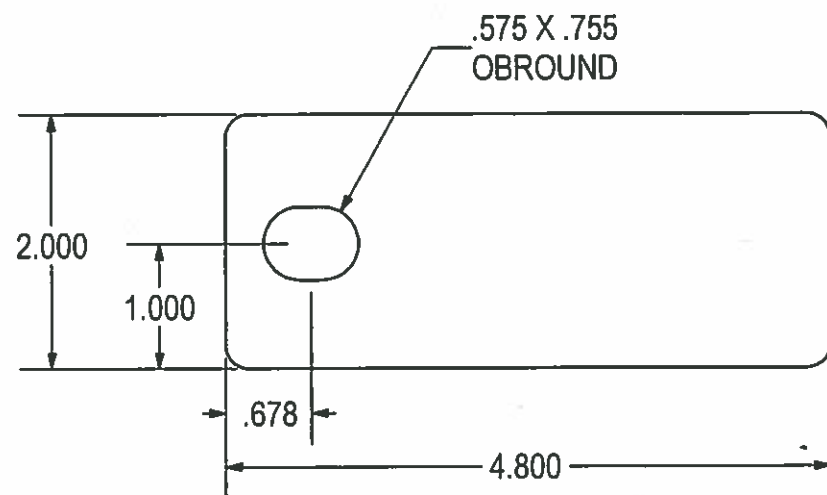
REV	DESCRIPTION	DATE	INITIALS
A	ADDED CHAMFER NOTE	7/14	DK



BREAK EDGE
(1/16" CHAMFER)
TOP / EXTERIOR
EDGES ONLY.
(3X) EDGES.



FORMED DETAILS



FLAT PATTERN

APPROVED
Washington State
Department of Transportation
HQ Traffic Operations Office
DATE June 17, 2015 TAT

3/16HR - 4.800 X 2.000
X = .325 @ 90° .188 R
(1) REQ'D

THIS DRAWING CREATED FOR MANUFACTURING REFERENCE ONLY AND IS NOT INTENDED TO SUPERCEDE H² PRECAST INC. DRAWINGS OR SPECIFICATIONS OF THE REFERENCED PART.

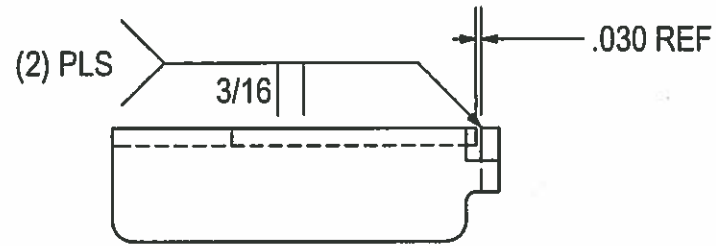
Prepared for H ² PRECAST INC.		PROGRAM NUMBER: 716-L001		REV. A
LATCH HOUSING		DATE CREATED: 5/21/12	SHEET 1 of 1	
HOLES ± 0.030	SIZE A	DRAWN BY: DREW KEIM	CAD FILE: 716-L001A	
X.XXX ± 0.060				
ANGLES ± 1.0°				

8 7 6 5 4 3 2 1

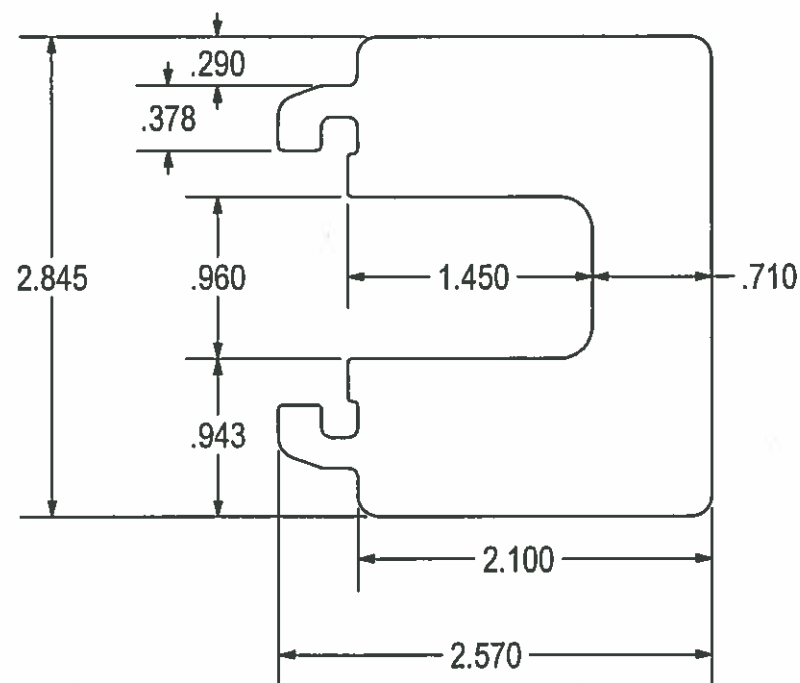
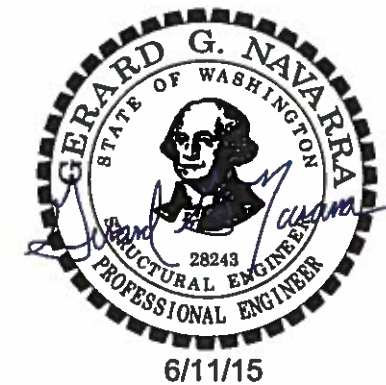
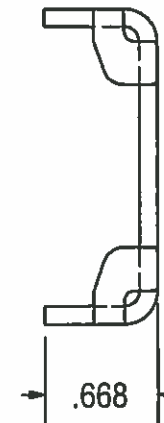
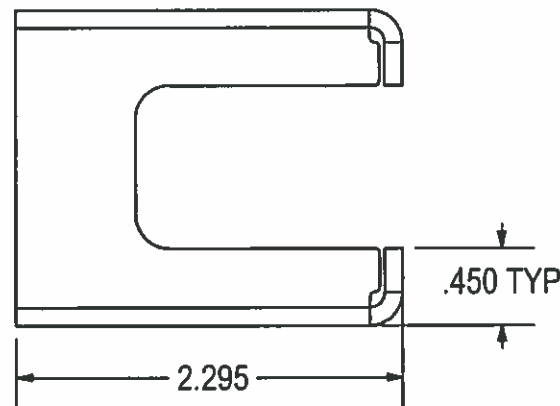
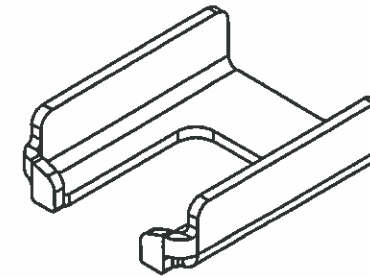
THE INFORMATION CONTAINED IN THIS DRAWING IS THE SOLE PROPERTY OF H² PRECAST INC. ANY REPRODUCTION IN PART OR WHOLE WITHOUT THE WRITTEN PERMISSION OF FM&M IS PROHIBITED.

This assembly is constructed and tested to conform with WSDOT Standard Specification 9-29.2(2), Standard Duty Junction Boxes.

REV	DESCRIPTION	DATE	INITIALS
A	REDESIGNED, SHORTENED, ADDED SIDE FLANGES.	7/14	DK



FORMED DETAILS



FLAT PATTERN

12 GA HR - 3.095 X 2.570
 X = .175 @ 90° .090 R
 (1) REQ'D

APPROVED
 Washington State
 Department of Transportation
 HQ Traffic Operations Office
 DATE June 17, 2015 TAT

Prepared for H² PRECAST INC.

LATCH GUIDE ✓

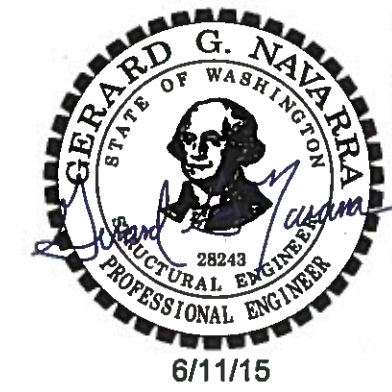
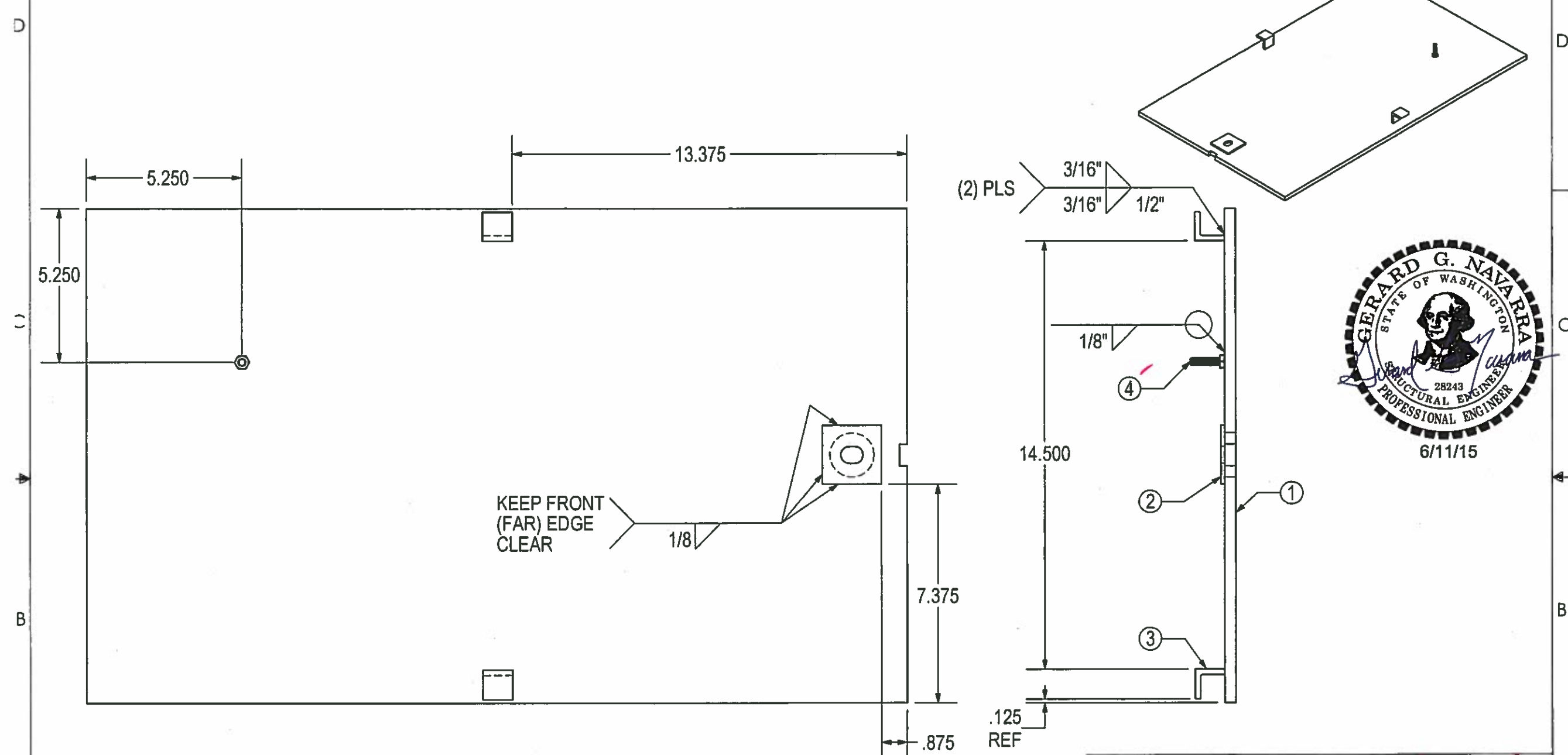
THIS DRAWING CREATED FOR MANUFACTURING REFERENCE ONLY AND IS NOT INTENDED TO SUPERCEDE H² PRECAST INC. DRAWINGS OR SPECIFICATIONS OF THE REFERENCED PART.

HOLES ± 0.030	SIZE A	DRAWN BY: DREW KEIM	PROGRAM NUMBER: 716-L004	REV. A
X.XXX ± 0.060			DATE CREATED: 5/21/12	
ANGLES ± 1.0°	SCALE: NONE	CAD FILE: 716-L004A	SHEET 1 of 1	

8 7 6 5 4 3 2 1

THE INFORMATION CONTAINED IN THIS DRAWING IS THE SOLE PROPERTY OF H² PRECAST INC. ANY REPRODUCTION IN PART OR WHOLE WITHOUT THE WRITTEN PERMISSION OF FM&M IS PROHIBITED.

This assembly is constructed and tested to conform with WSDOT Standard Specification 9-29.2(2), Standard Duty Junction Boxes.



#	SKU#	DESCRIPTION	MATERIAL	QTY.
4	101-00272	Ø1/4-20 X 1" HHCS (316SS)	316SS	1
3	211-02163	LID GUIDE / RETAINER	A36HR	2
2	716-L003	LOCK PLATE	A36HR	1
1	716-WSDPT202 716-S0029	LID, TII JBOX WSDOT (DP) LID, TII JBOX WSDOT (SN)	ASTM A786 FP	1

PARTS LIST

APPROVED
 Washington State
 Department of Transportation
 HQ Traffic Operations Office
 DATE June 17, 2015 TAT

UNIVERSAL DRAWING:
 700-00002 WSDOT (DP)
 700-00033 WSDOT (SN)

Prepared for H² PRECAST INC.
LID WELD ASSY, TYPEII JBOX WSDOT
 DRAWN BY: DREW KEIM
 PROGRAM NUMBER: **700-00002 (DP)**
 DATE CREATED: 4/28/15 **700-00033 (SN)**
 SCALE: NONE
 CAD FILE: LID.T2 WSDOT
 SHEET 1 of 1

THIS DRAWING CREATED FOR MANUFACTURING REFERENCE ONLY AND IS NOT INTENDED TO SUPERCEDE H² PRECAST INC. DRAWINGS OR SPECIFICATIONS OF THE REFERENCED PART.

HOLES ± 0.030
 X.XXX ± 0.060
 ANGLES ± 1.0°

D
C
B
A

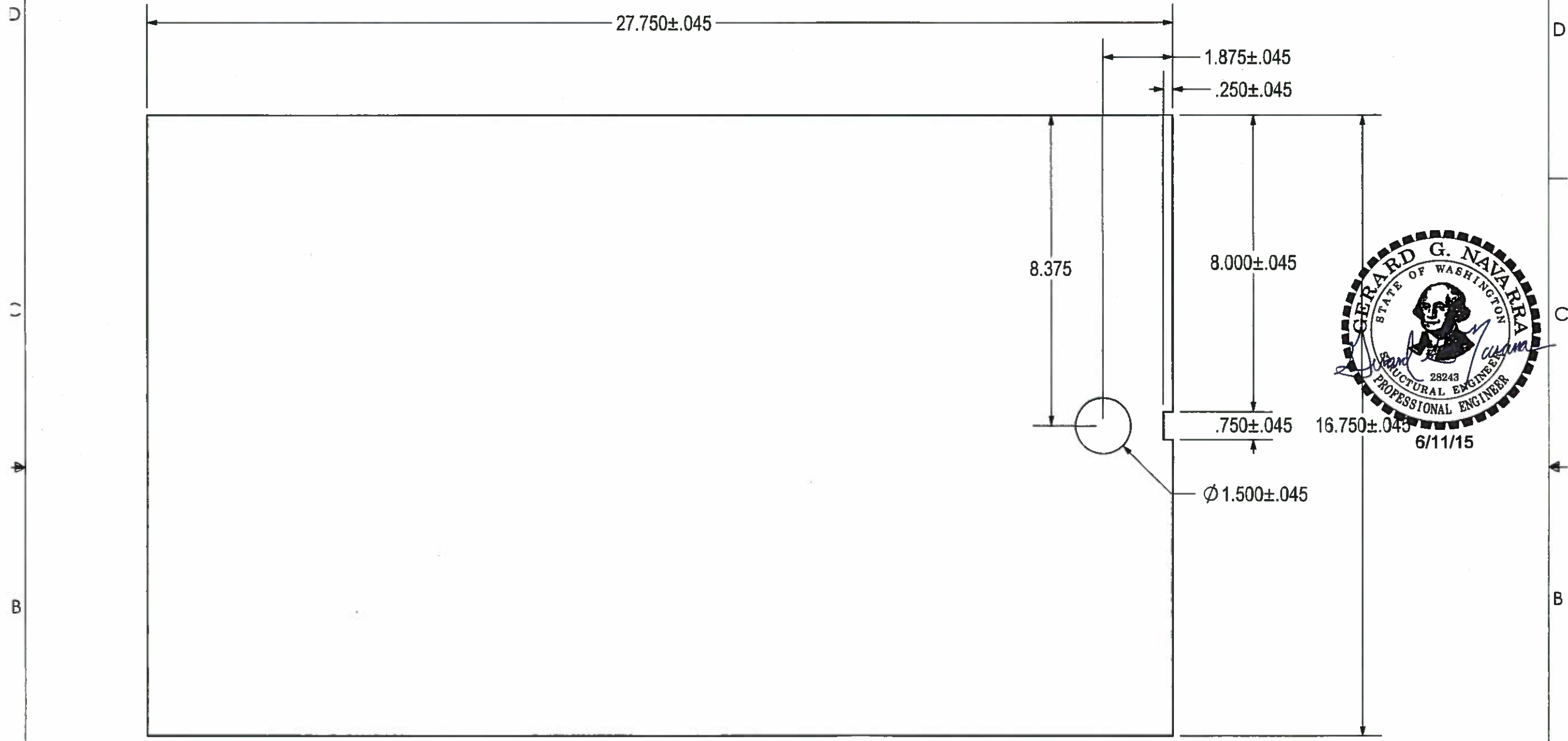
D
C
B
A

8 7 6 5 4 3 2 1

THE INFORMATION CONTAINED IN THIS DRAWING IS THE SOLE PROPERTY OF H² PRECAST INC. ANY REPRODUCTION IN PART OR WHOLE WITHOUT THE WRITTEN PERMISSION OF FM&M IS PROHIBITED.

This assembly is constructed and tested to conform with WSDOT Standard Specification 9-29.2(2), Standard Duty Junction Boxes.

REV	DESCRIPTION	DATE	INITIALS
A	MODIFIED LIFTING NOTCH. 3/4x1/4 RECT WAS 1/2x1/2 OBR.	7/14	DK



APPROVED

Washington State
Department of Transportation
HQ Traffic Operations Office
DATE June 17, 2015 TAT

3/8 DIAMOND PLATE / SLIPNOT (ASTM A786 FLOOR PLATE)
27.750 X 16.750
(1) REQ'D

UNIVERSAL DWG:
716-WSDOT202 (DIAMOND PLATE)
716-S0029 (SLIPNOT PLATE)

Prepared for H² PRECAST INC.

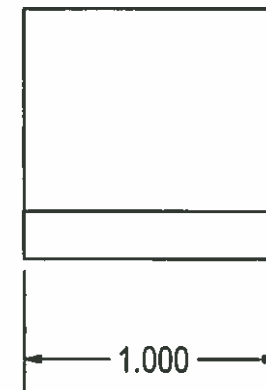
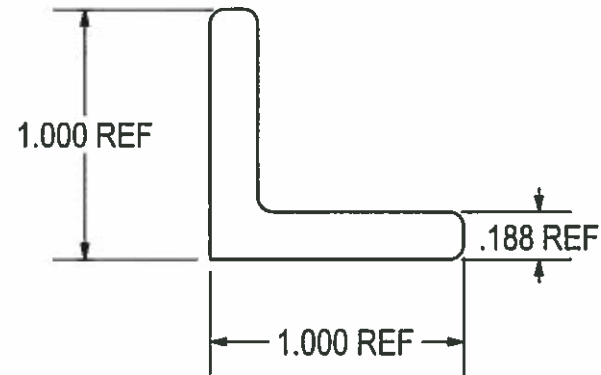
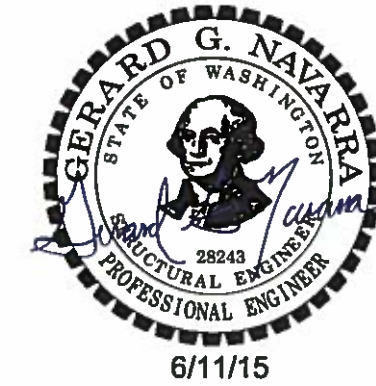
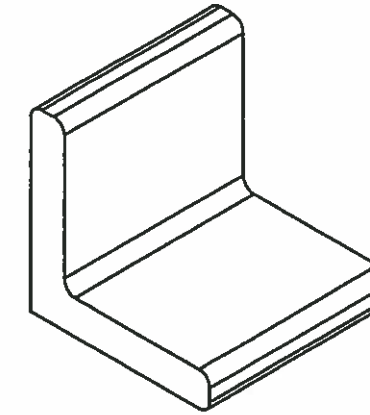
DOOR W/ LOCK - TYPE II JBOX WSDOT

SIZE A	DRAWN BY: DREW KEIM	PROGRAM NUMBER: DATE CREATED: 5/31/12	REV. A
SCALE: NONE		CAD FILE: 716-S0029A	SHEET OF

THIS DRAWING CREATED FOR MANUFACTURING REFERENCE ONLY AND IS NOT INTENDED TO SUPERCEDE H² PRECAST INC. DRAWINGS OR SPECIFICATIONS OF THE REFERENCED PART.

THE INFORMATION CONTAINED IN THIS DRAWING IS THE SOLE PROPERTY OF H² PRECAST INC. ANY REPRODUCTION IN PART OR WHOLE WITHOUT THE WRITTEN PERMISSION OF FM&M IS PROHIBITED.

This assembly is constructed and tested to conform with WSDOT Standard Specification 9-29 2(2), Standard Duty Junction Boxes.



ANGLE, 1 x 1 x 3/16 X 1.000 LONG
(2) REQ'D

APPROVED
Washington State
Department of Transportation
HQ Traffic Operations Office
DATE June 17, 2015 TAT

Prepared for H² PRECAST INC.

LID GUIDE / RETAINER

HOLES ± 0.030	SIZE A	DRAWN BY: DREW KEM	PROGRAM NUMBER: 211-02163	REV.
X.XXX ± 0.060			DATE CREATED: 5/7/14	
ANGLES ± 1.0°	SCALE: NONE	CAD FILE: 716-F0056	SHEET 1 of 1	

THIS DRAWING CREATED FOR MANUFACTURING REFERENCE ONLY AND IS NOT INTENDED TO SUPERCEDE H² PRECAST INC. DRAWINGS OR SPECIFICATIONS OF THE REFERENCED PART.

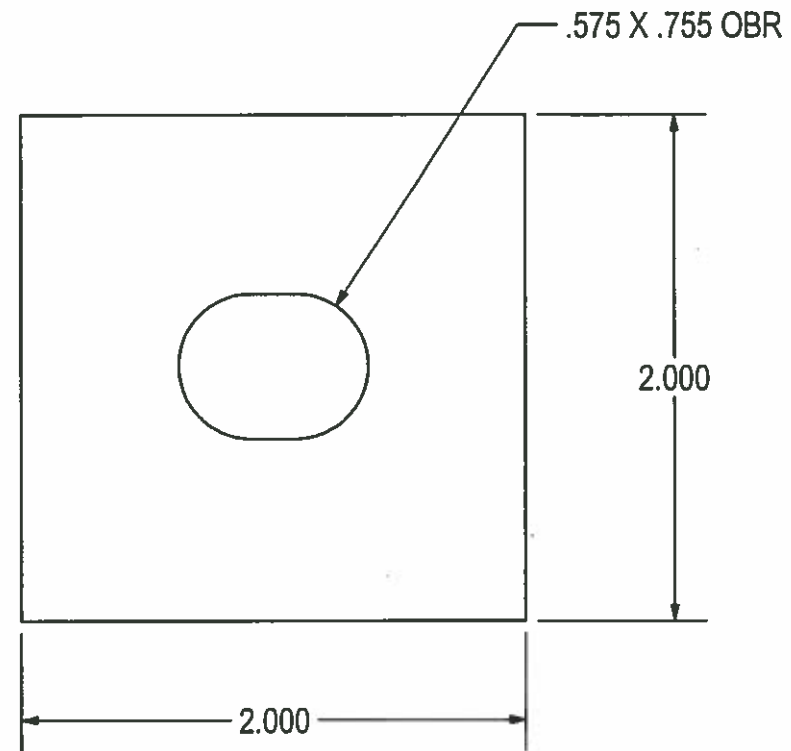
D
C
B
A

D
C
B
A

8 7 6 5 4 3 2 1

THE INFORMATION CONTAINED IN THIS DRAWING IS THE SOLE PROPERTY OF H² PRECAST INC. ANY REPRODUCTION IN PART OR WHOLE WITHOUT THE WRITTEN PERMISSION OF FM&M IS PROHIBITED.

This assembly is constructed and tested to conform with WSDOT Standard Specification 9-29.2(2), Standard Duty Junction Boxes.

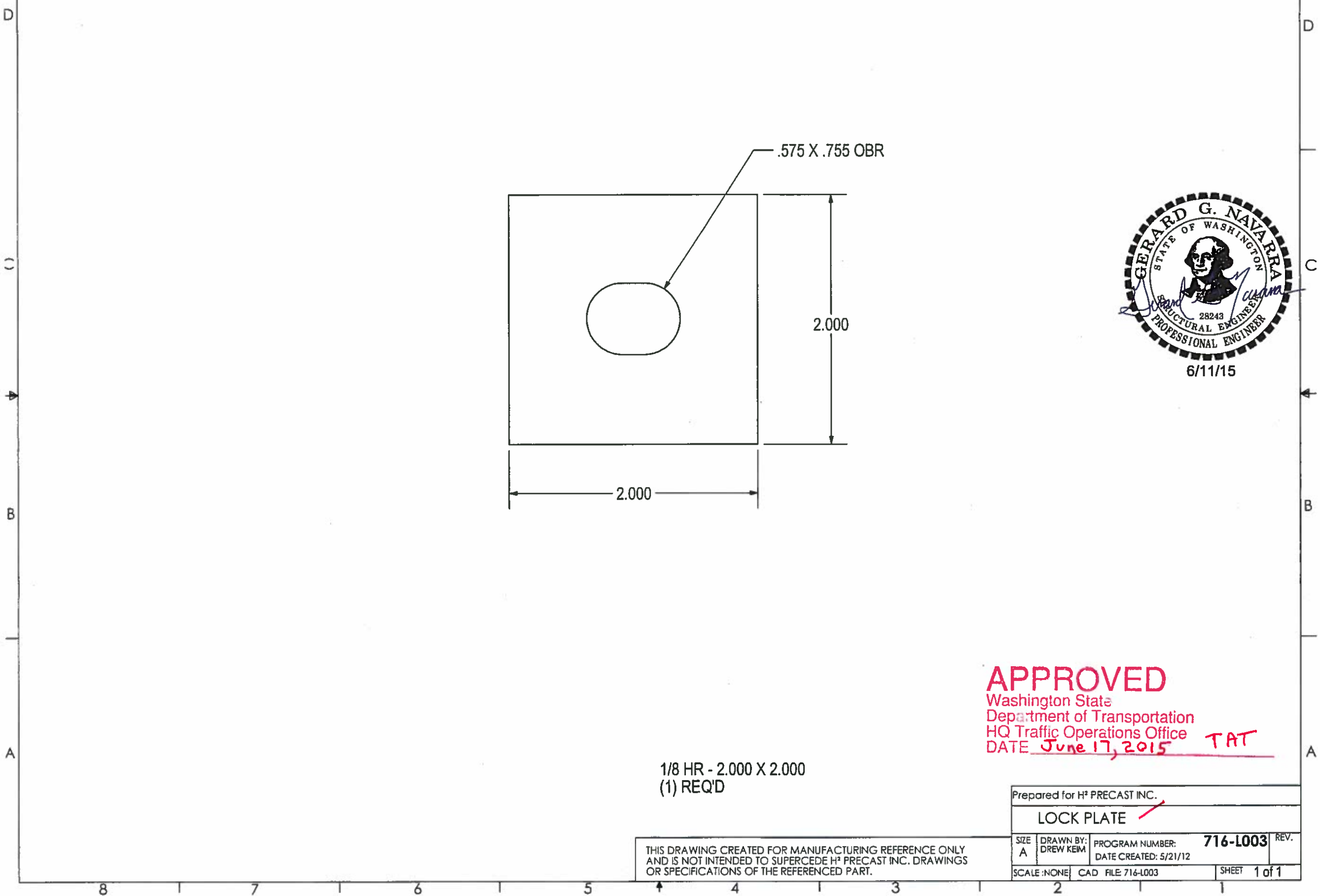


APPROVED
Washington State
Department of Transportation
HQ Traffic Operations Office
DATE June 17, 2015 TAT

1/8 HR - 2.000 X 2.000
(1) REQ'D

THIS DRAWING CREATED FOR MANUFACTURING REFERENCE ONLY AND IS NOT INTENDED TO SUPERCEDE H² PRECAST INC. DRAWINGS OR SPECIFICATIONS OF THE REFERENCED PART.

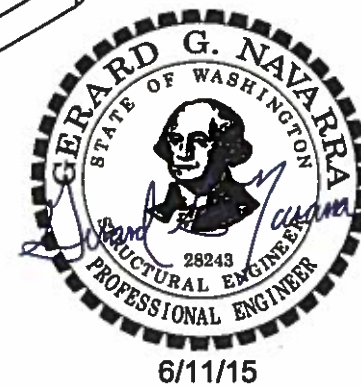
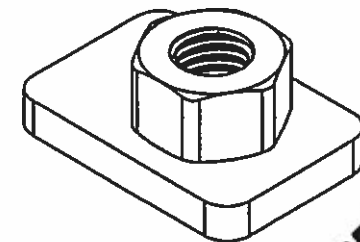
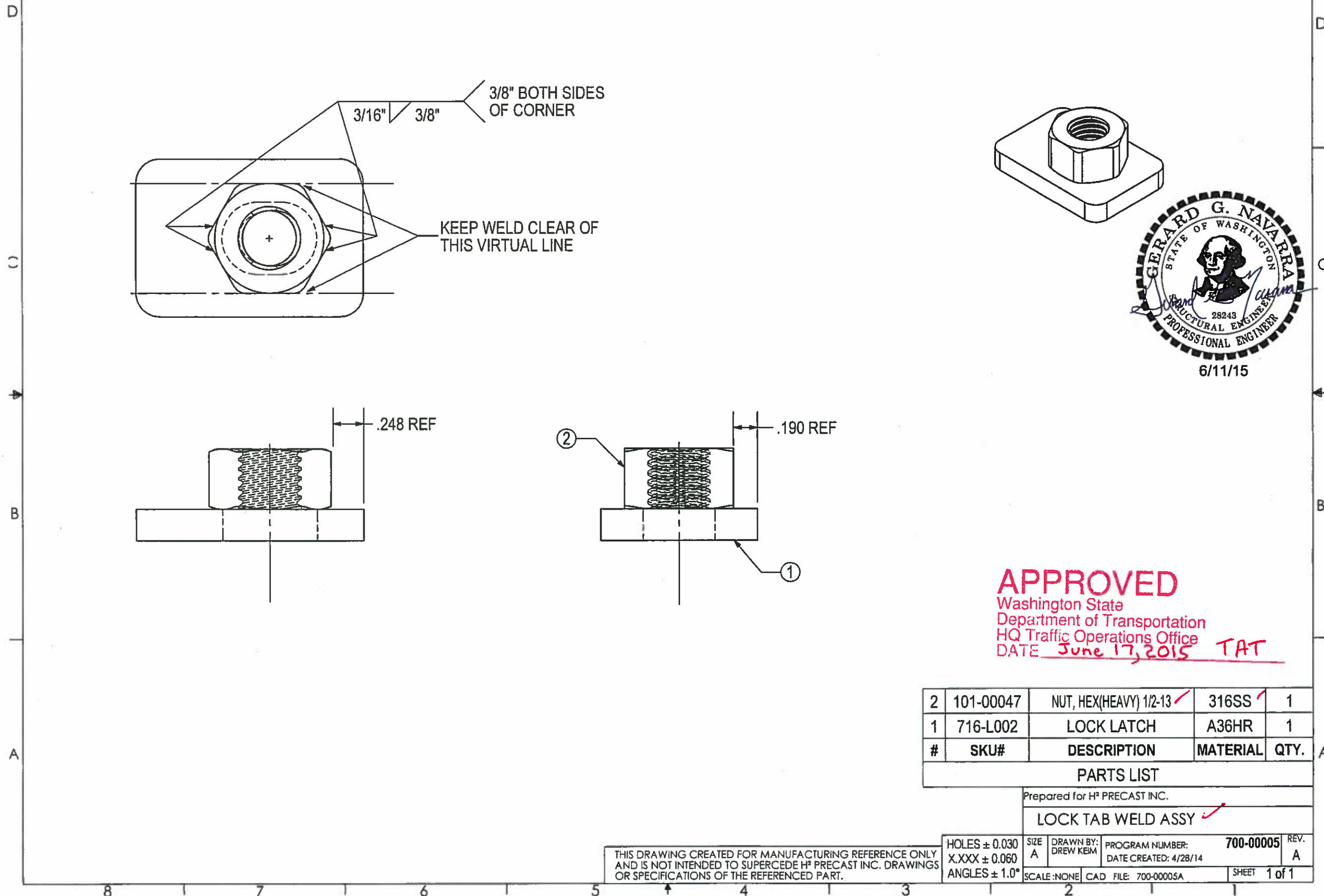
Prepared for H ² PRECAST INC.			
LOCK PLATE			
SIZE A	DRAWN BY: DREW KEIM	PROGRAM NUMBER: 716-L003	REV.
SCALE: NONE		CAD FILE: 716-L003	SHEET 1 of 1



THE INFORMATION CONTAINED IN THIS DRAWING IS THE SOLE PROPERTY OF H² PRECAST INC. ANY REPRODUCTION IN PART OR WHOLE WITHOUT THE WRITTEN PERMISSION OF FM&M IS PROHIBITED.

This assembly is constructed and tested to conform with WSDOT Standard Specification 9-29.2(2), Standard Duty Junction Boxes.

REV	DESCRIPTION	DATE	INITIALS
A	MODIFEID WELD NOTE. ADDED NOTE.	7/14	DK



APPROVED
 Washington State
 Department of Transportation
 HQ Traffic Operations Office
 DATE June 17, 2015 TAT

#	SKU#	DESCRIPTION	MATERIAL	QTY.
2	101-00047	NUT, HEX(HEAVY) 1/2-13 ✓	316SS ✓	1
1	716-L002	LOCK LATCH	A36HR	1

PARTS LIST

Prepared for H² PRECAST INC.

LOCK TAB WELD ASSY ✓

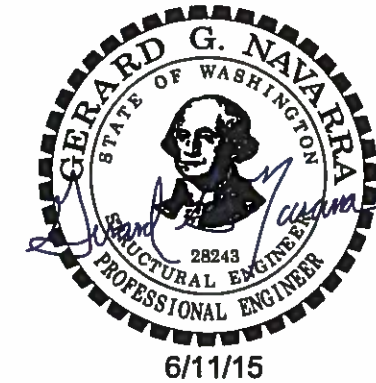
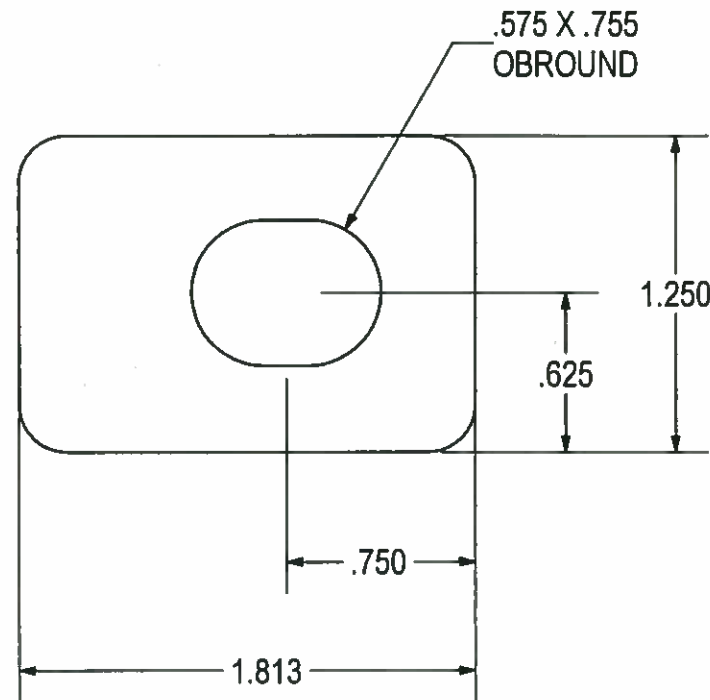
HOLES ± 0.030	SIZE A	DRAWN BY: DREW KEIM	PROGRAM NUMBER: 700-00005	REV. A
X.XXX ± 0.060			DATE CREATED: 4/28/14	
ANGLES ± 1.0°	SCALE: NONE	CAD FILE 700-00005A	SHEET 1 of 1	

THIS DRAWING CREATED FOR MANUFACTURING REFERENCE ONLY AND IS NOT INTENDED TO SUPERCEDE H² PRECAST INC. DRAWINGS OR SPECIFICATIONS OF THE REFERENCED PART.

THE INFORMATION CONTAINED IN THIS DRAWING IS THE SOLE PROPERTY OF H² PRECAST INC. ANY REPRODUCTION IN PART OR WHOLE WITHOUT THE WRITTEN PERMISSION OF FM&M IS PROHIBITED.

This assembly is constructed and tested to conform with WSDOT Standard Specification 9-29.2(2), Standard Duty Junction Boxes.

REV	DESCRIPTION	DATE	INITIALS
A	1/4" HR WAS 3/8" HR	7/14	DK



APPROVED
 Washington State
 Department of Transportation
 HQ Traffic Operations Office
 DATE June 17, 2015 TAT

1/4 HR - 1.813 X 1.250
 (1) REQ'D

THIS DRAWING CREATED FOR MANUFACTURING REFERENCE ONLY AND IS NOT INTENDED TO SUPERCEDE H² PRECAST INC. DRAWINGS OR SPECIFICATIONS OF THE REFERENCED PART.

Prepared for H ² PRECAST INC.			
LOCK LATCH ✓			
SIZE A	DRAWN BY: DREW KEIM	PROGRAM NUMBER: DATE CREATED: 5/21/12	716-L002 REV. A
HOLES ± 0.030 X.XXX ± 0.060 ANGLES ± 1.0°		SCALE: NONE CAD FILE: 716-L002A	SHEET 1 of 1

8 7 6 5 4 3 2 1