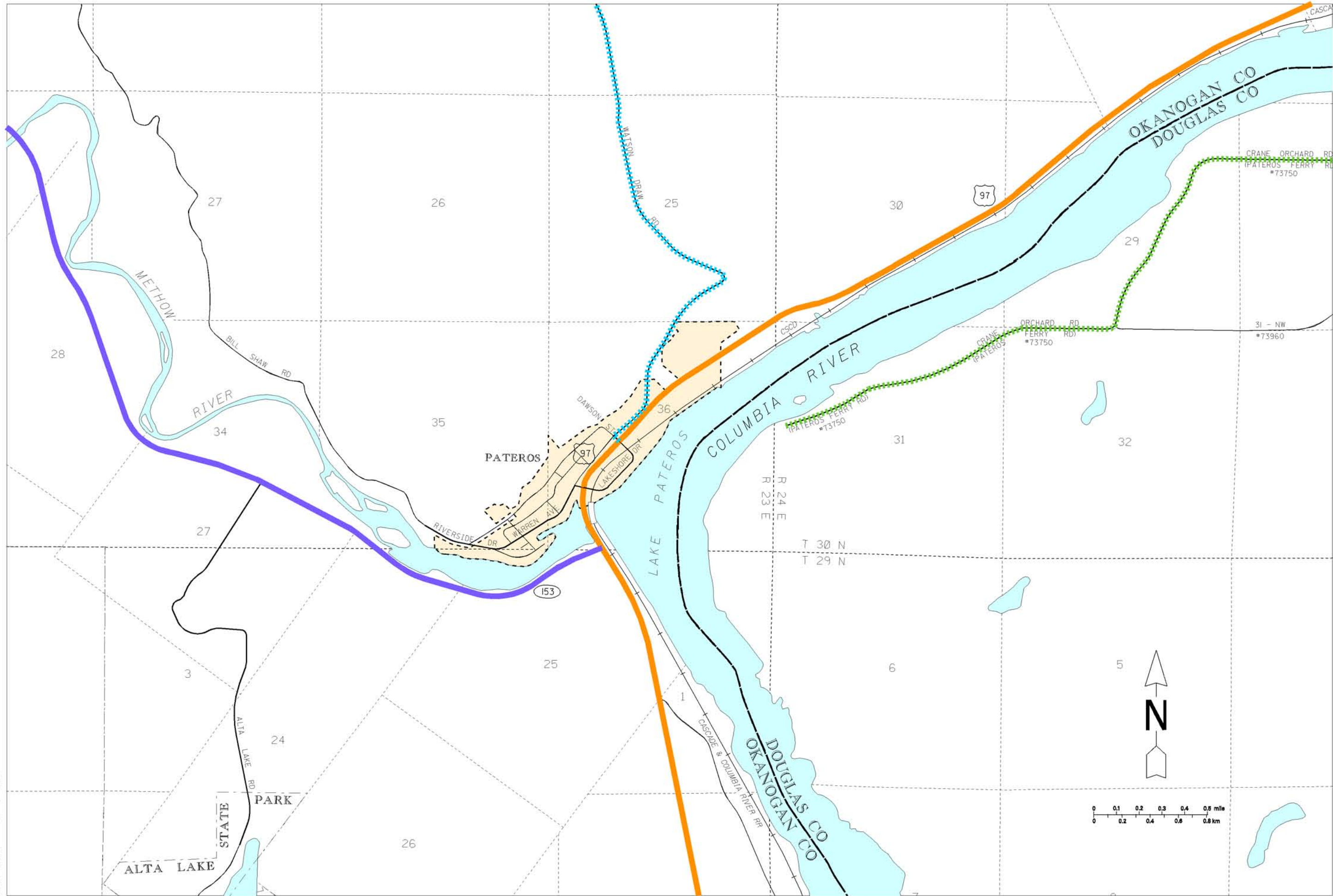


PLOT DATE: 30-NOV-2007



Freight and Goods Transportation System

Roadways 2007

WASHINGTON STATE DEPARTMENT OF TRANSPORTATION

TONNAGE CLASS
T1 - T5
ANNUAL TONS
(in thousands)

- T1 (over 10,000)
- T2 (4,000 to 10,000)
- T3 (300 to 4,000)
- T4 (100 to 300)
- T5 (over 20 in 60 days)

No Seasonal Weight Restrictions

Seasonal Weight Restrictions



PATEROS
OKANOGAN COUNTY

