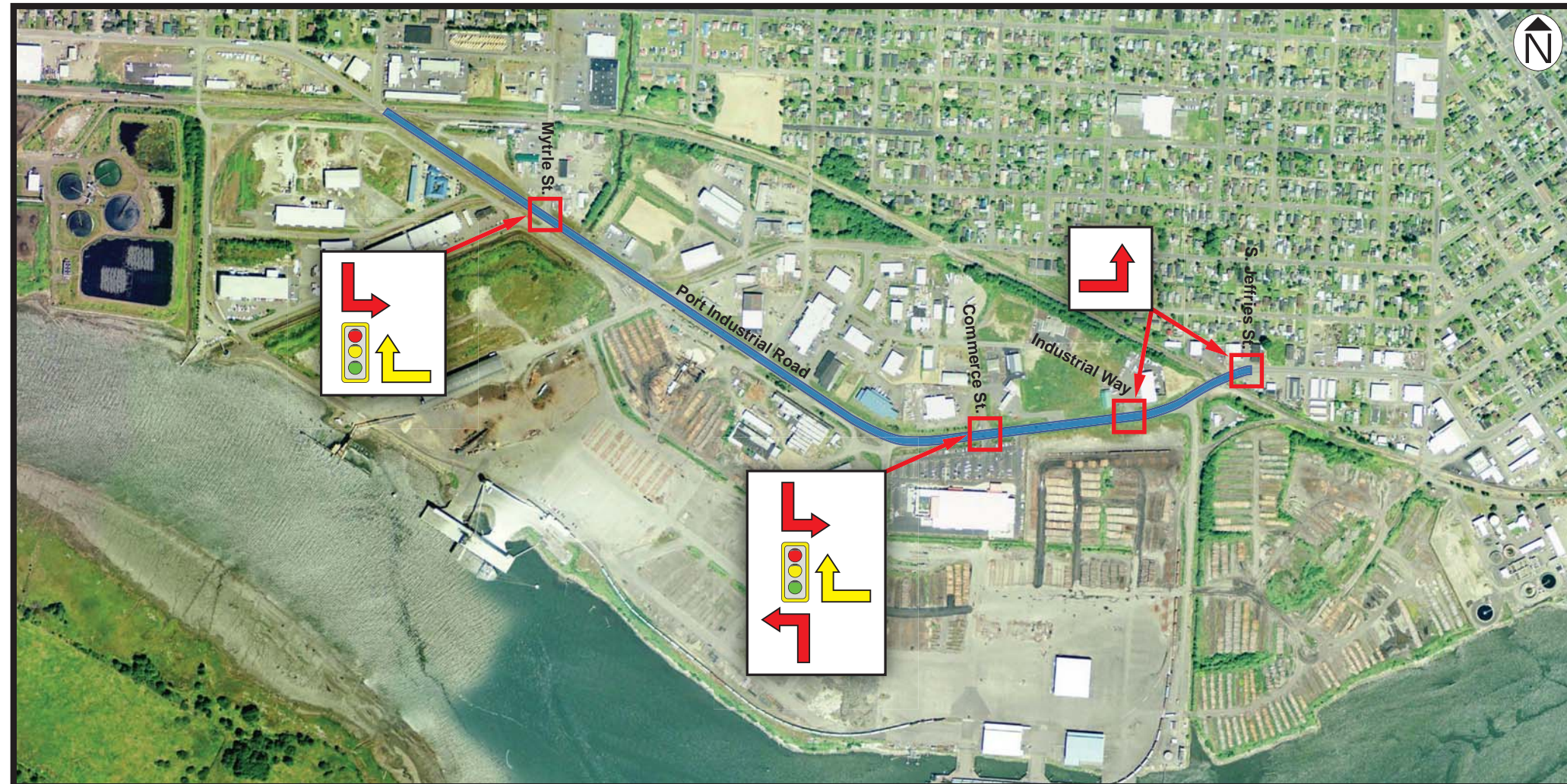
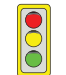




# US 101 REGIONAL CIRCULATION PROJECT

## PORT INDUSTRIAL ROAD IMPROVEMENTS



**Legend**

-  New Traffic Signal
-  Left Turn Pocket
-  Right Turn Pocket

- Improvements**
- Pavement Overlay
  - Turn Pockets
  - Shoulders
  - Signals
  - Curb / Gutter / Sidewalk
  - Drainage
  - Two Way Left Turn Lane
  - Relocate Utilities

