



SR 520 Tolling: Traffic Monitoring

Wednesday, January 04, 2012

Baseline data: M-F, 10/29-11/18 & 11/26-12/16

Daily Volume:

% change
1/4/2012
baseline

SR 520 Bridge

-43%
58,000
101,100

I-90 Bridge

8%
148,400
137,900

Cross-lake Total I-90, SR 520, SR 522

-11%
248,600
279,700

SR 522 at 68th Ave NE

4%
42,200
40,700

Traffic Summary:

Traffic volume on the SR 520 bridge was down over 40% compared to a typical weekday. I-90 volume was up by 8% and SR 522 volume was up by 4%. Total cross-lake traffic on SR 520, I-90, and SR 522 was down 11%. The rest of the region saw a decrease ranging from 3-9%. Travel time across SR 520 was faster than usual in the morning peak and westbound in the evening peak, and within the normal range for the eastbound evening peak. Travel time on I-90 was higher than usual in both directions during both peaks. Travel time on SR 522 between I-5 and I-405 was about the same as usual westbound all day and eastbound in the morning, but it was longer than usual eastbound in the evening. Eastbound evening travel time reached 40 minutes, 10-12 minutes longer than normal due to delays between I-5 and 153rd St.

Major Incidents:

Heavy rain midday and during the afternoon
 Disabled vehicle on I-405 NB at SR 169 blocking 1 lane from 8:04 to 8:08 am
 Disabled vehicle on I-5 NB at Pacific Ave blocking 1 lane from 9:51 to 10:02 pm
 Collision on I-5 NB at Spokane St blocking 1 lane from 9:54 to 10:10 am
 Collision on I-5 NB at Michigan St blocking 1 lane from 10:27 to 10:41 am
 Disabled vehicle on I-5 NB at Spokane St blocking 1 lane from 11:31 to 11:42 am
 Collision on I-5 SB at Columbian Way blocking 1 lane from 1:19 to 1:33 pm
 Collision on I-5 SB at I-405 blocking 1 lane from 1:38 to 2:03 pm
 Disabled vehicle on I-405 NB at SE 8th St blocking 1 lane from 2:25 to 2:35 pm
 Collision on I-5 SB at SR 520 blocking 1 lane from 3:23 to 3:45 pm
 Collision on I-5 SB at 164th St SW blocking 1 lane from 3:53 to 4:09 pm
 Disabled vehicle on I-405 SB at I-5 blocking 1 lane from 4:49 to 5:07 pm
 Disable vehicle on I-5 NB at NE 175th St blocking 1 lane from 6:02 to 6:12 pm

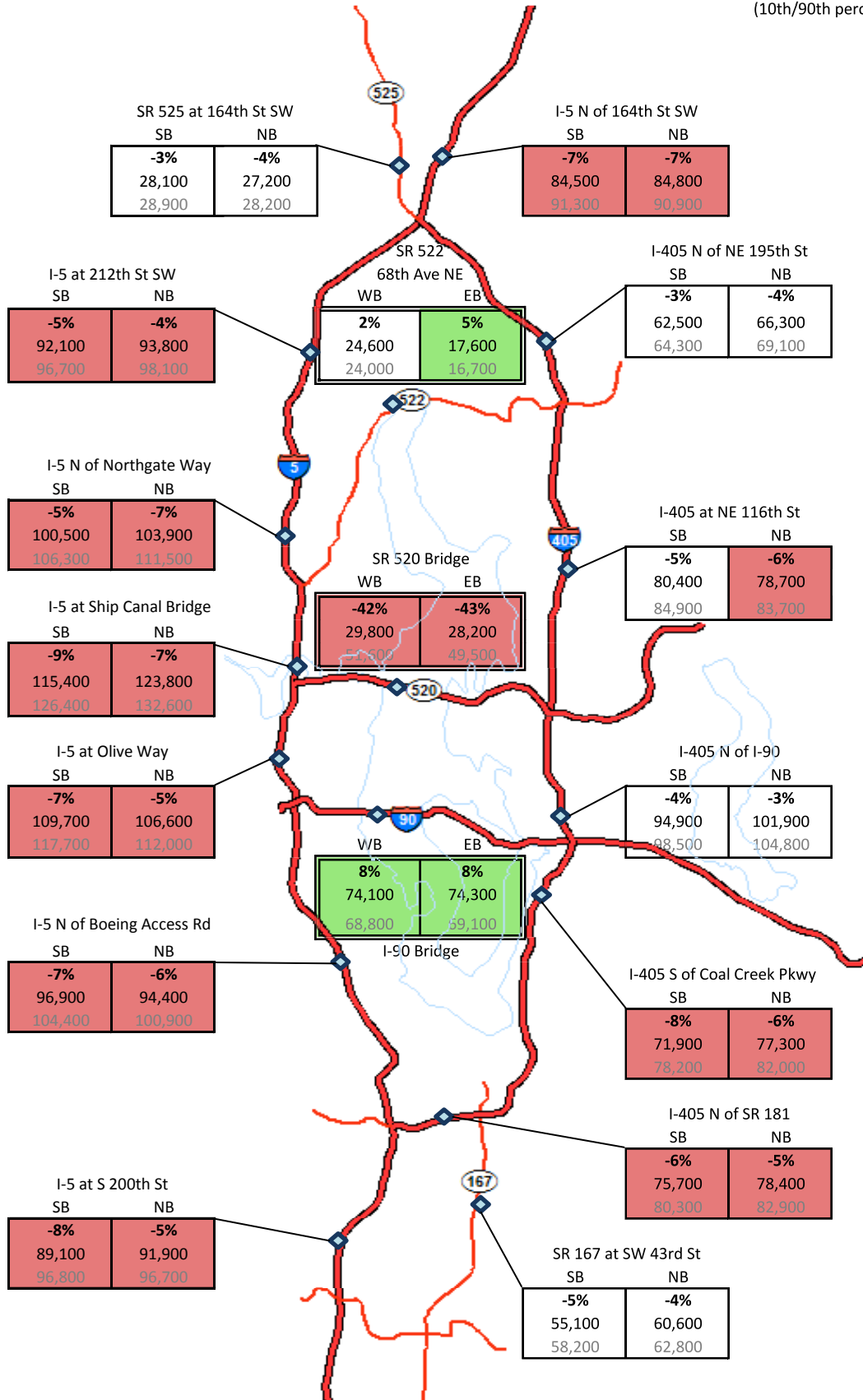
Special Events:

None

SR 520 Tolling: Traffic Monitoring
Daily Mainline Volumes
Wednesday, January 04, 2012

Base data: M-F, 10/29-11/18 & 11/26-12/16

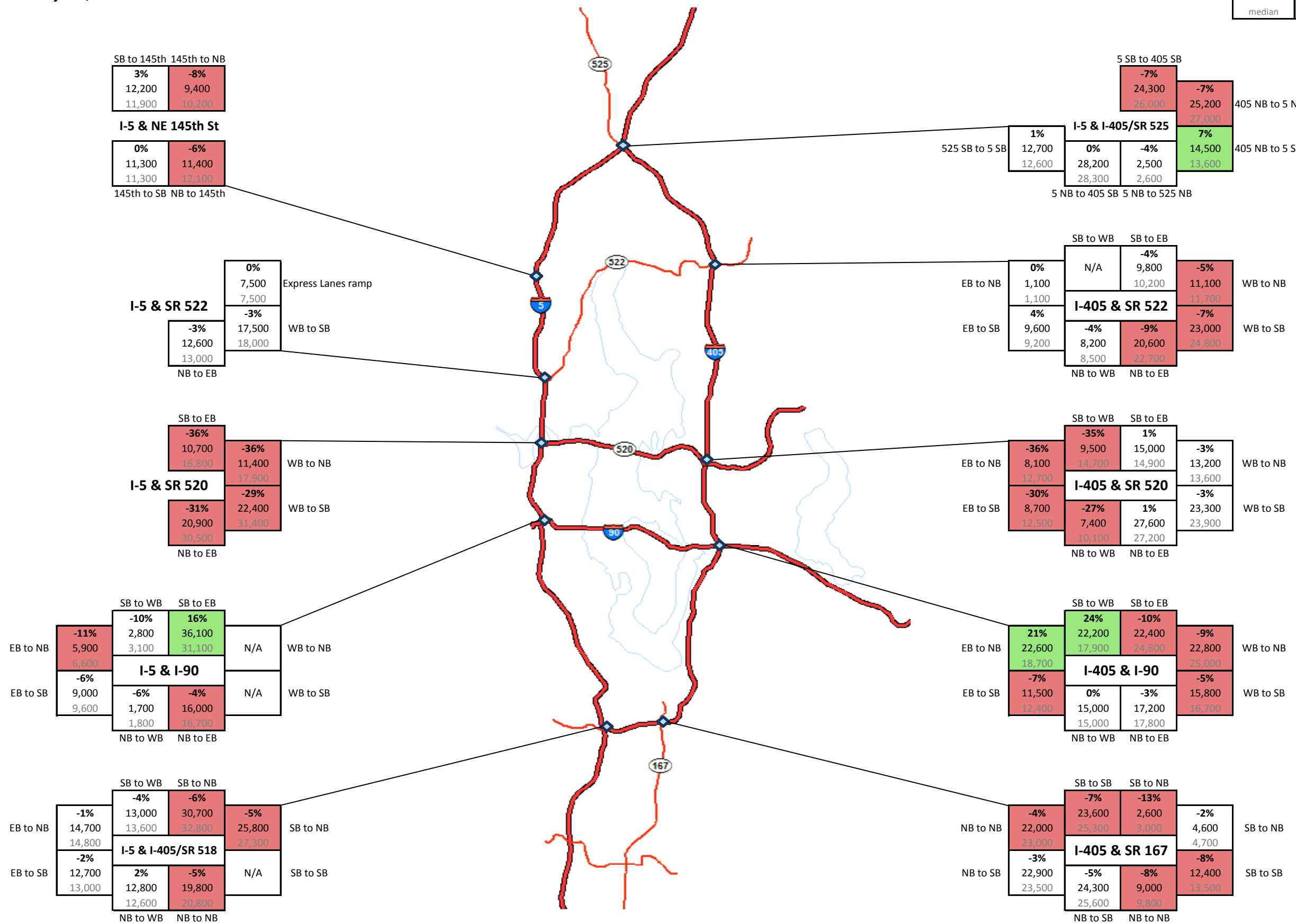
% change 1/4/2012 median	above range of typical variation	below range of typical variation
	(10th/90th percentile)	



SR 520 Tolling: Traffic Monitoring
Daily Interchange Volumes
Wednesday, January 04, 2012

Base data: M-F, 10/29-11/18 & 11/26-12/16

% change	above range	below range
1/4/2012	of typical	of typical
median	variation	variation
	(10th/90th percentile)	



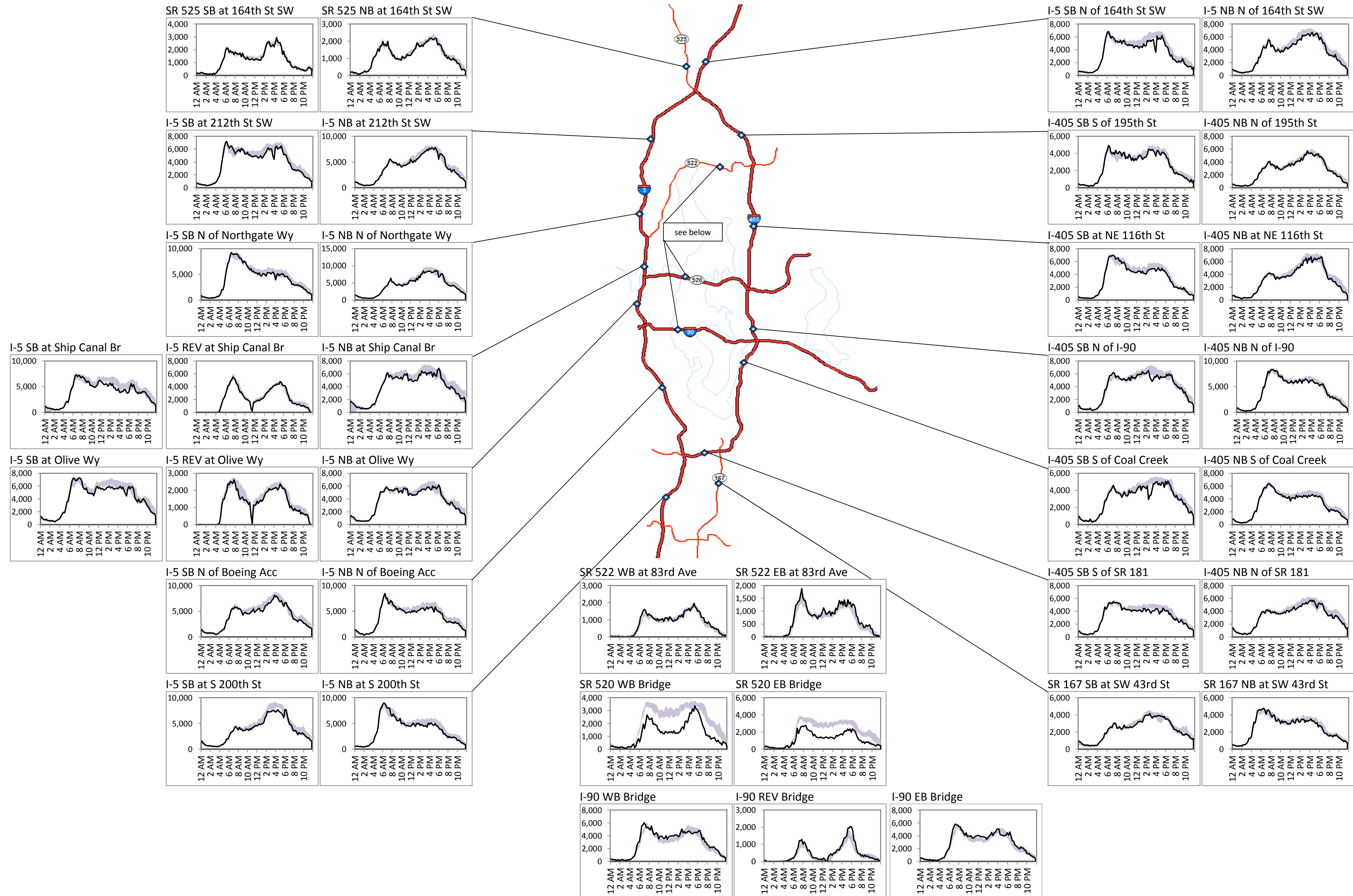
SR 520 Tolling: Traffic Monitoring

Hourly Mainline Volumes

Wednesday, January 4, 2012

— Wednesday, January 4, 2012

■ Typical Range (10-90%ile, M-F, 10/29-11/18 & 11/26-12/16)



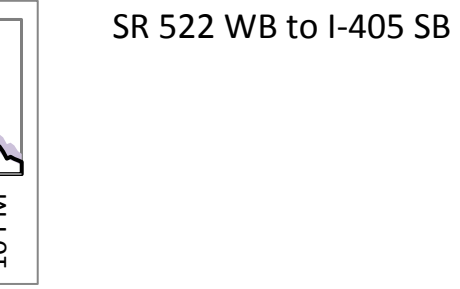
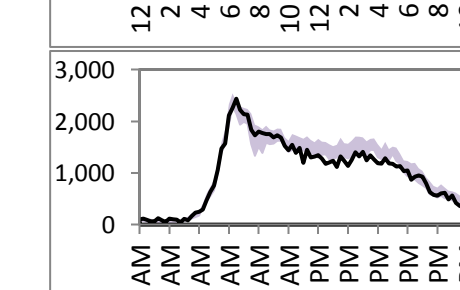
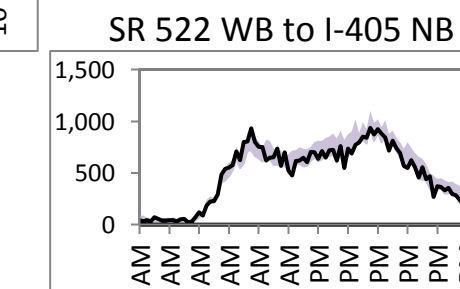
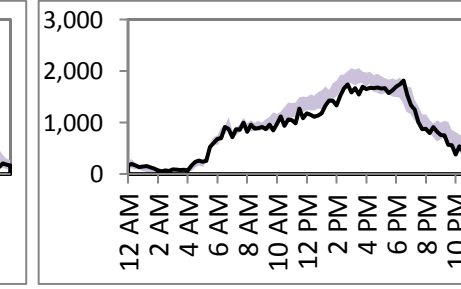
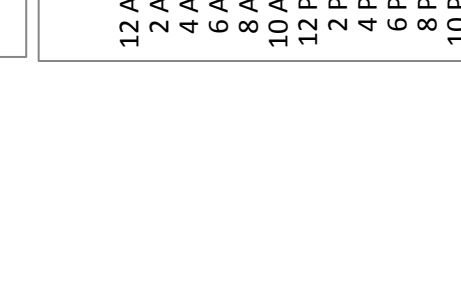
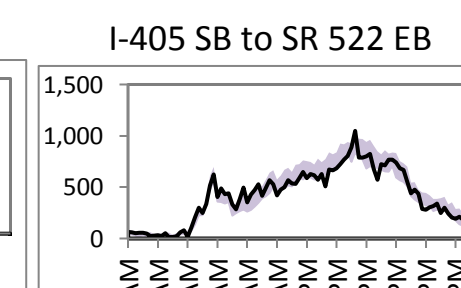
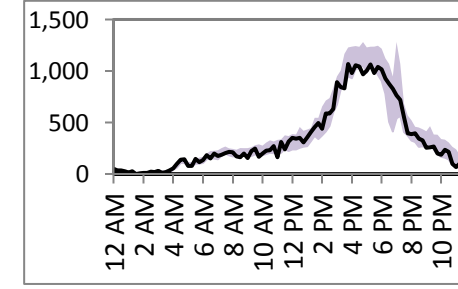
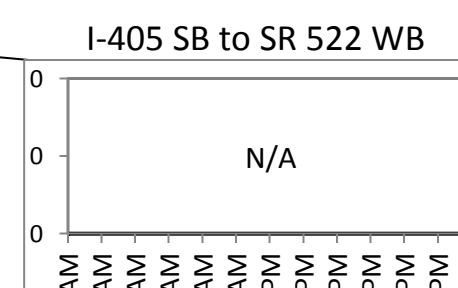
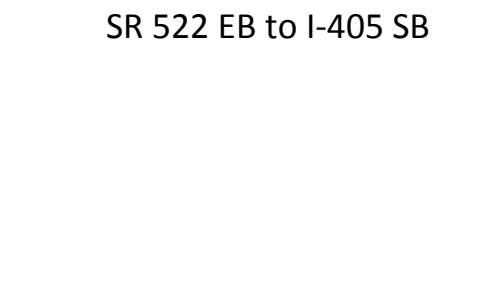
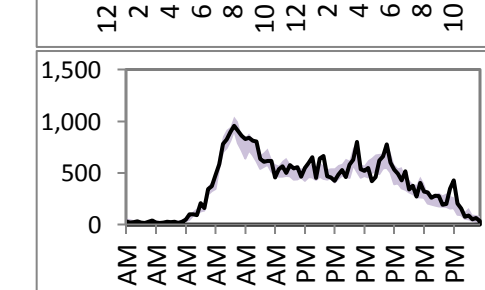
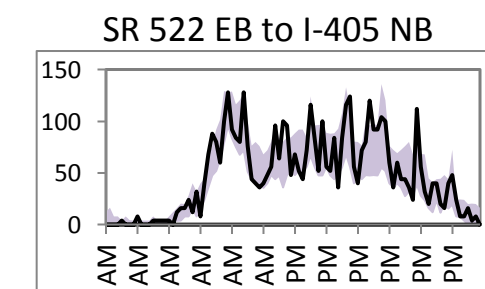
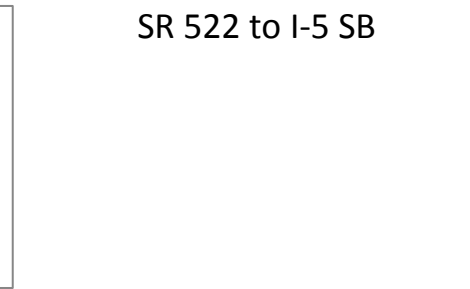
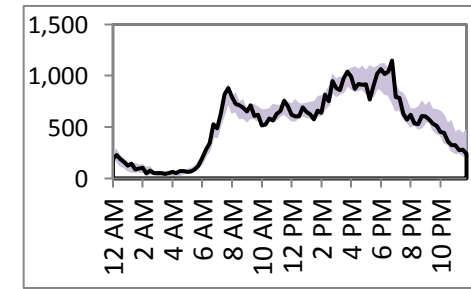
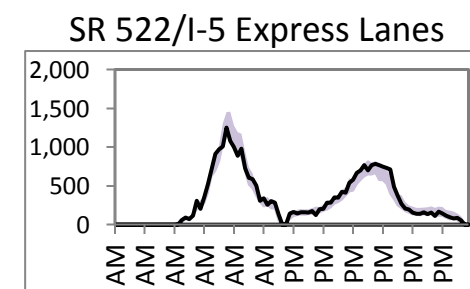
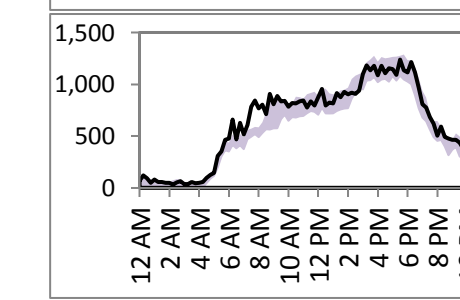
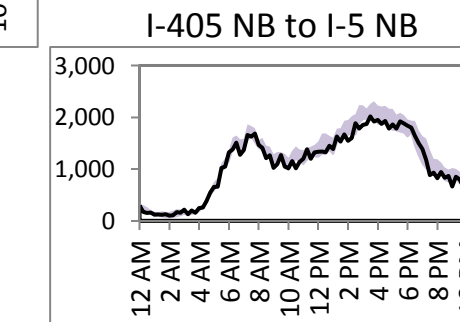
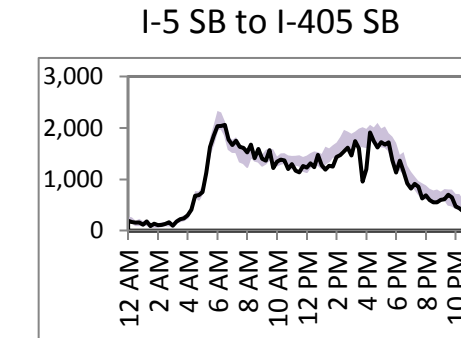
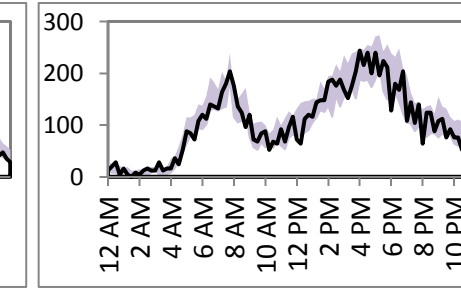
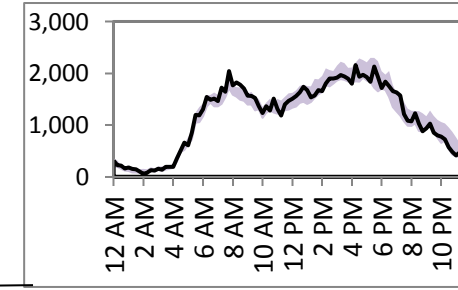
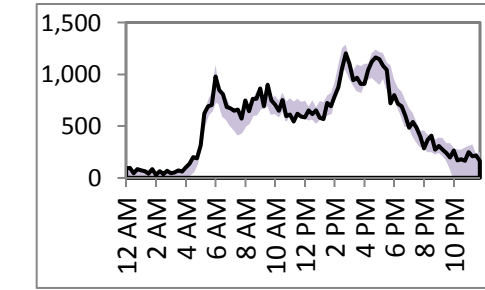
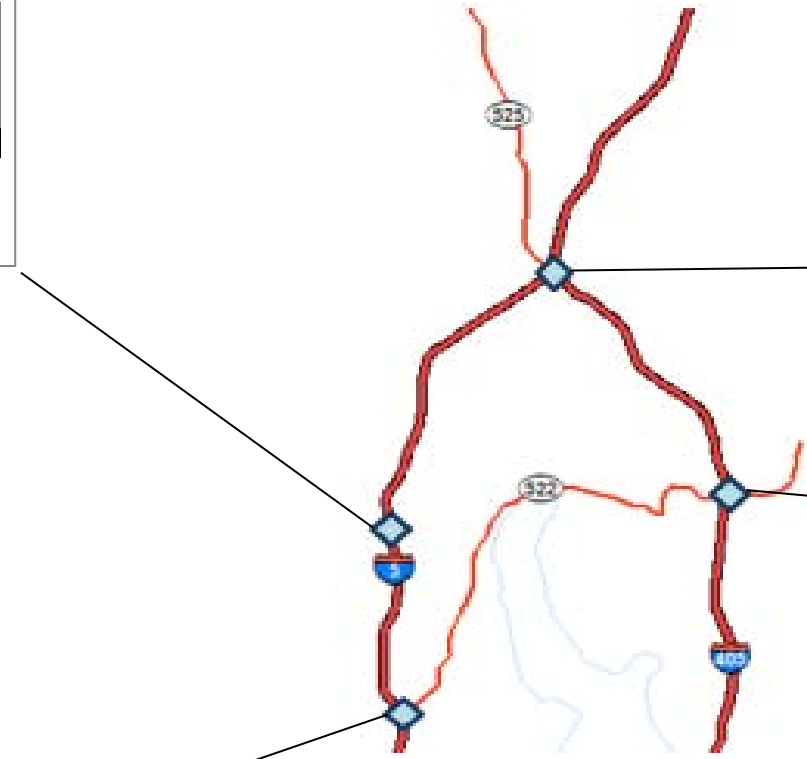
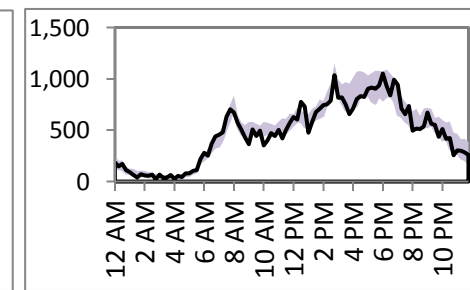
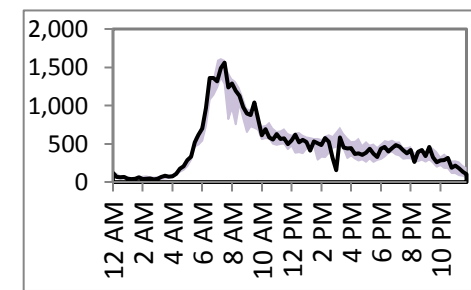
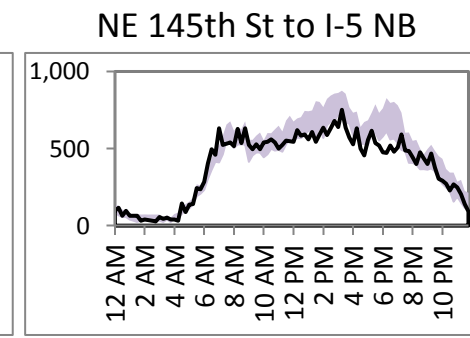
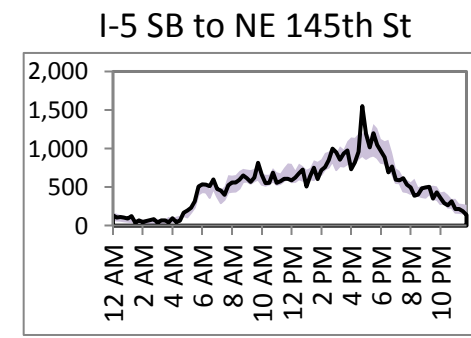
SR 520 Tolling: Traffic Monitoring

Hourly Interchange Volumes

Wednesday, January 4, 2012

— Wednesday, January 4, 2012

■ Typical Range (10-90%ile, M-F, 10/29-11/18 & 11/26-12/16)



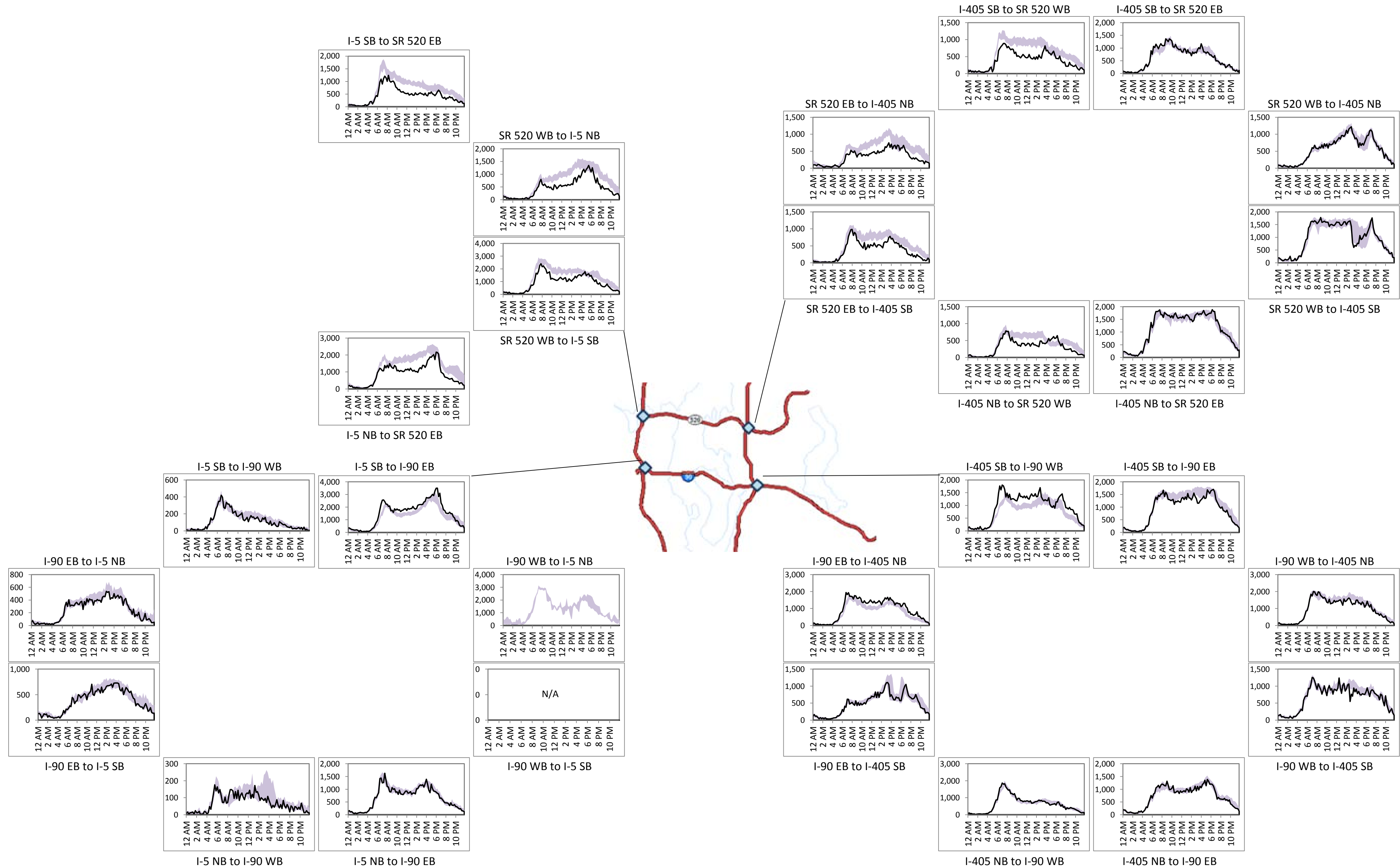
SR 520 Tolling: Traffic Monitoring

Hourly Interchange Volumes

Wednesday, January 4, 2012

— Wednesday, January 4, 2012

■ Typical Range (10-90%ile, M-F, 10/29-11/18 & 11/26-12/16)



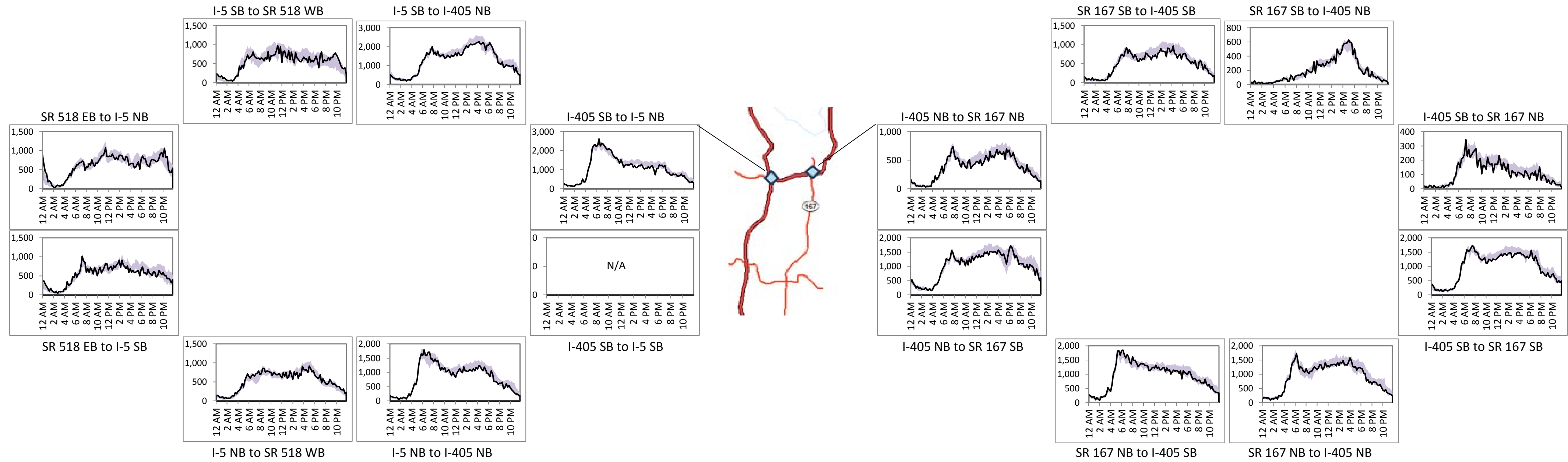
SR 520 Tolling: Traffic Monitoring

Hourly Interchange Volumes

Wednesday, January 4, 2012

— Wednesday, January 4, 2012

■ Typical Range (10-90%ile, M-F, 10/29-11/18 & 11/26-12/16)



SR 520 Tolling: Traffic Monitoring

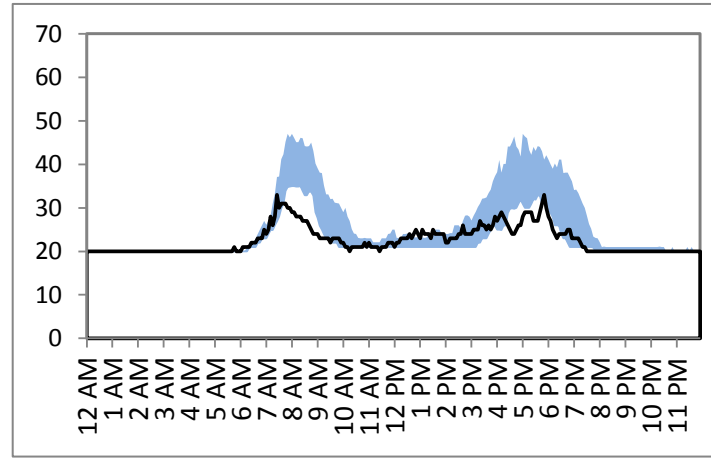
Travel Times

Wednesday, January 4, 2012

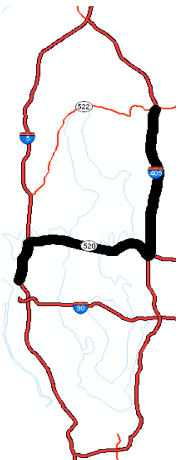
— Wednesday, January 4, 2012

■ Typical Range (10-90%ile, M-F, 10/29-11/18 & 11/26-12/16)

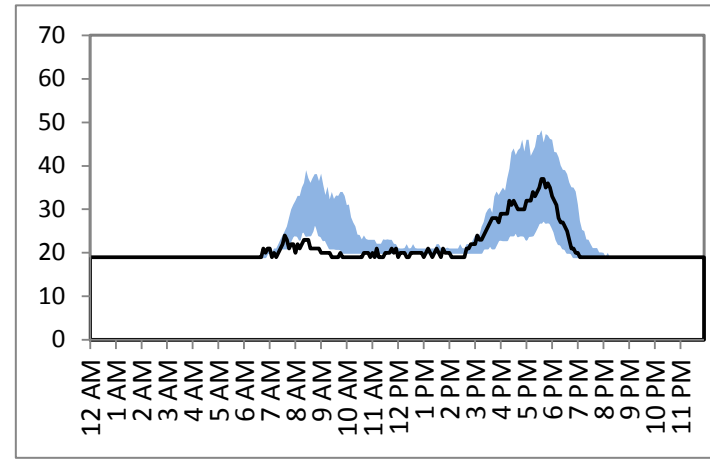
Woodinville to Seattle



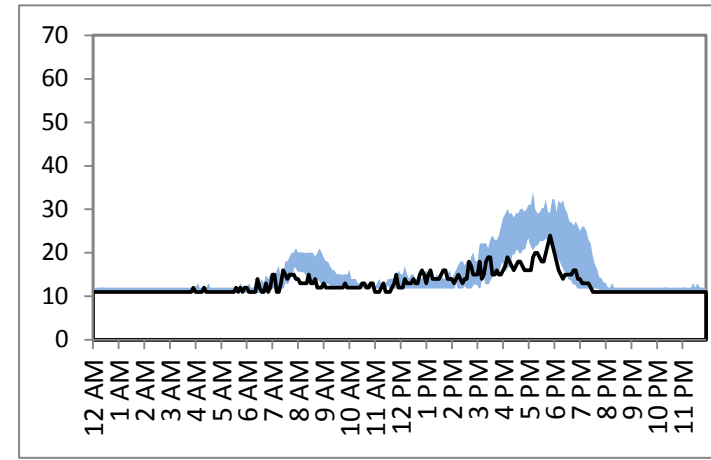
via 520



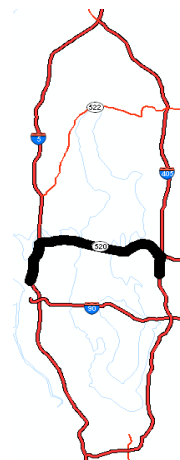
Seattle to Woodinville



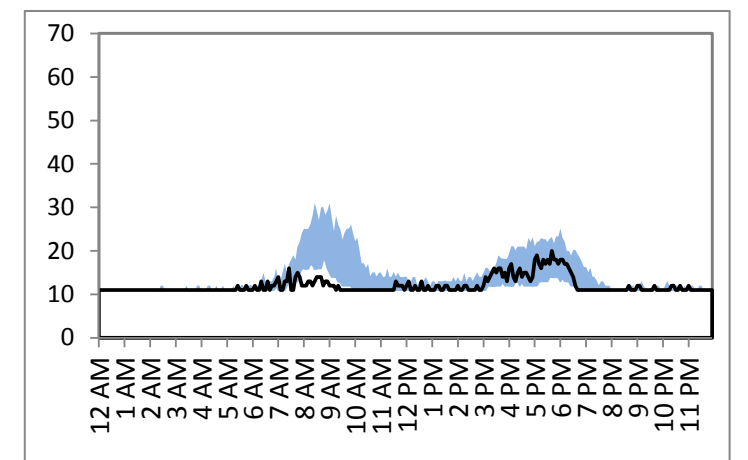
Bellevue to Seattle



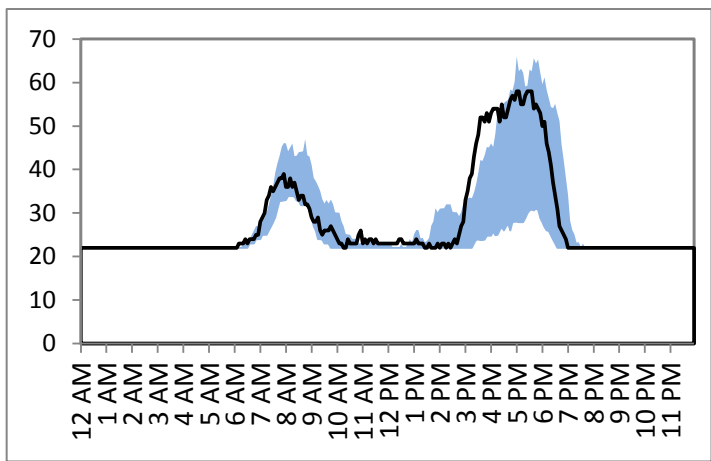
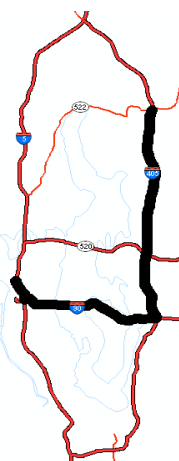
via 520



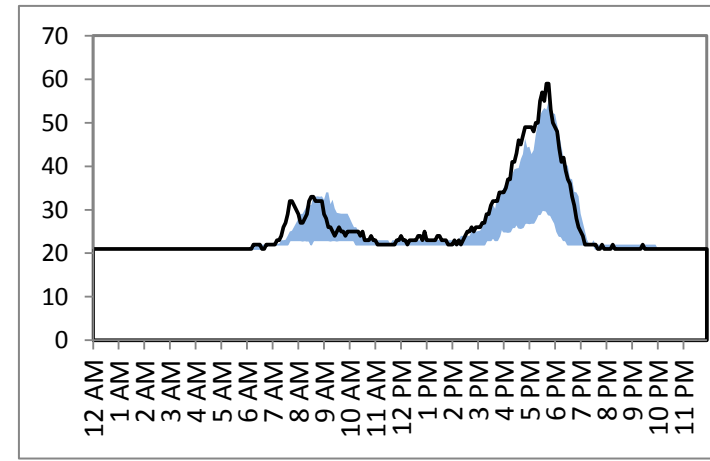
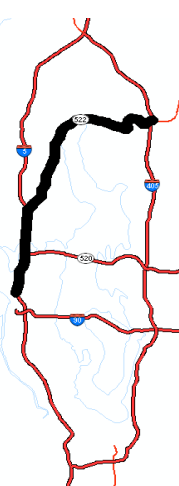
Seattle to Bellevue



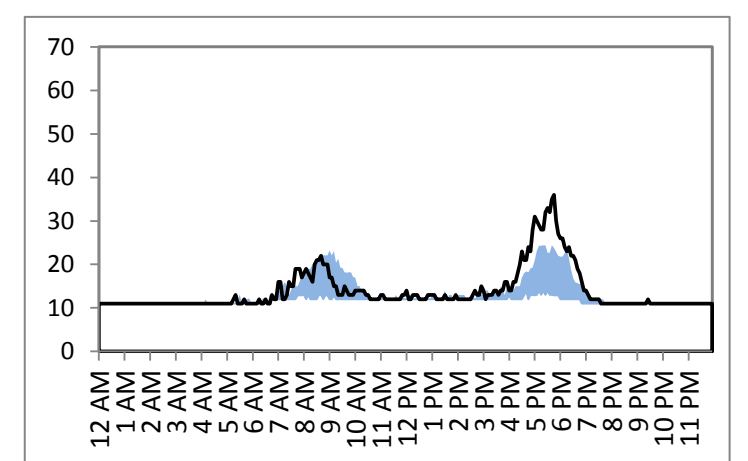
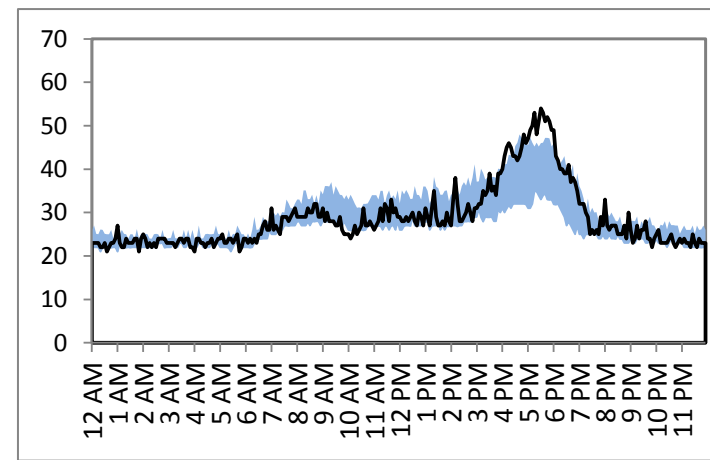
via I-90



via SR 522



via I-90



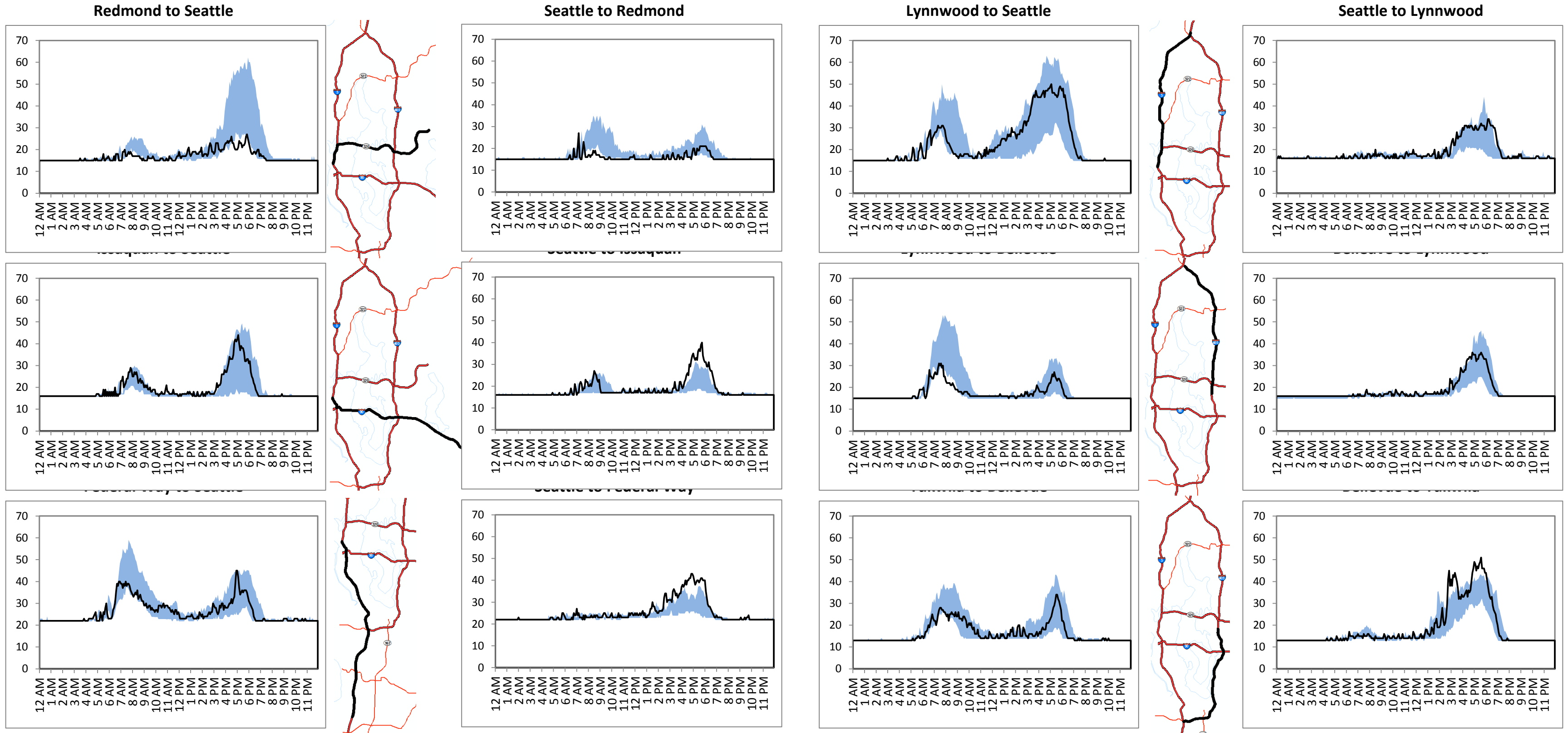
SR 520 Tolling: Traffic Monitoring

Travel Times

Wednesday, January 4, 2012

— Wednesday, January 4, 2012

■ Typical Range (10-90%ile, M-F, 10/29-11/18 & 11/26-12/16)

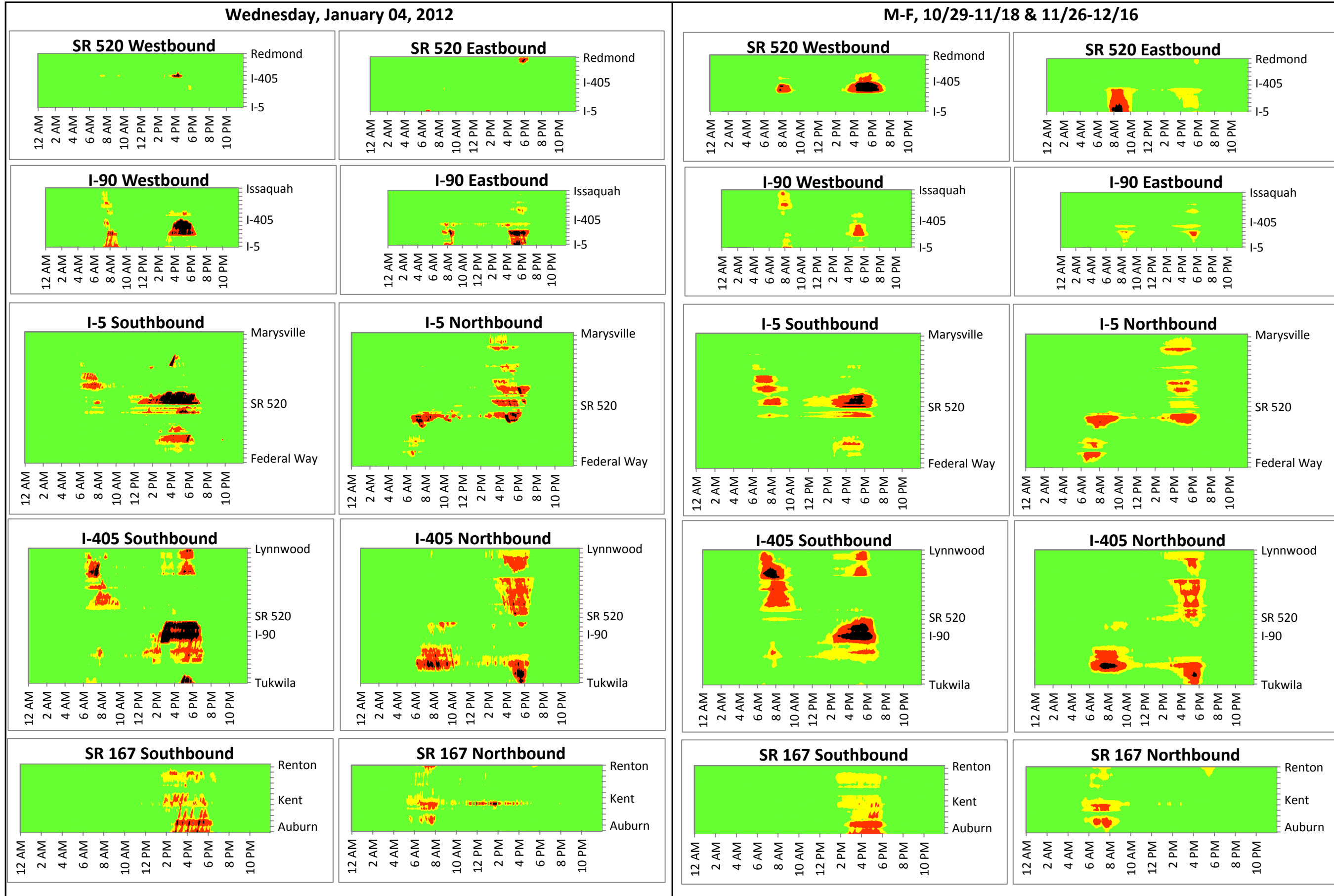


SR 520 Tolling: Traffic Monitoring

Congestion Contours

Wednesday, January 4, 2012

- free flow
- moderate
- heavy
- stop and go



SR 520 Tolling: Traffic Monitoring

SR 520 Detail

Wednesday, January 4, 2012

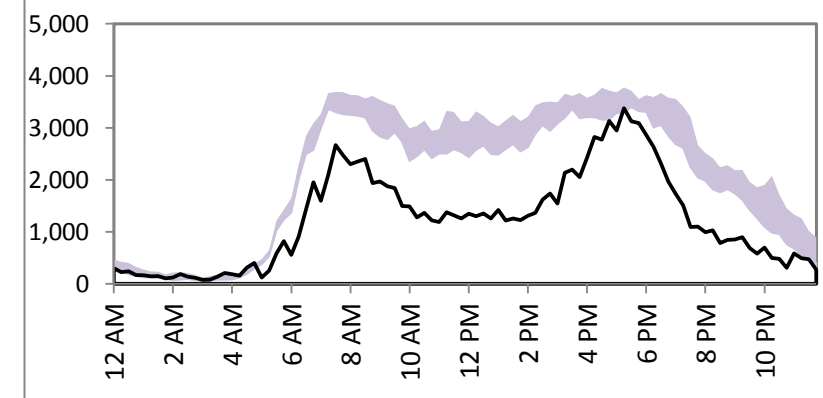
Mainline Volume



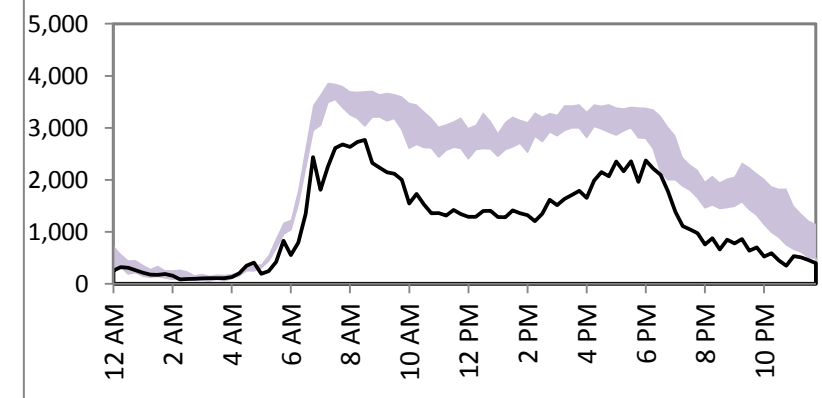
SR 520 Bridge

WB	EB
-42%	-43%
29,800	28,200
51,600	49,500

SR 520 WB Bridge



SR 520 EB Bridge



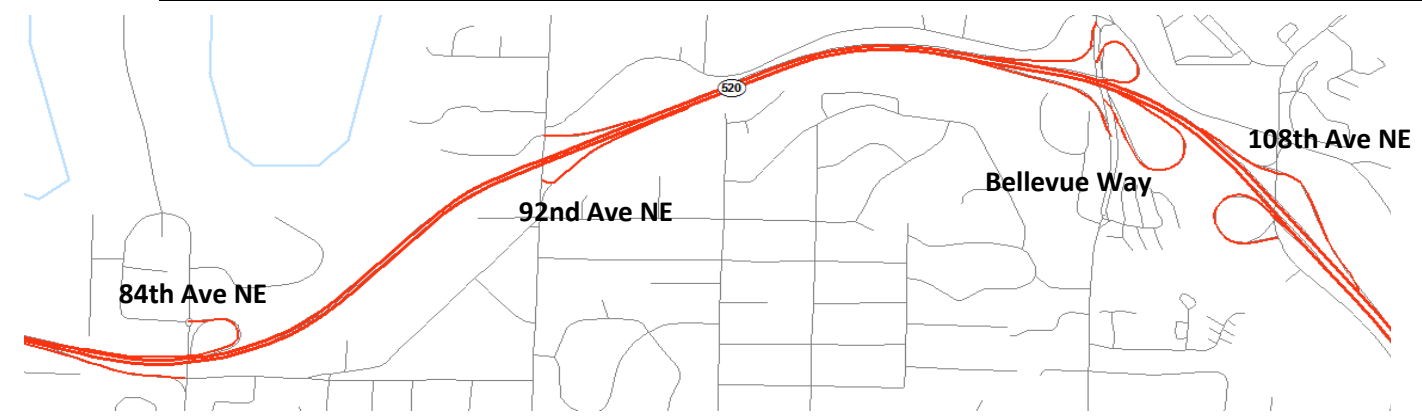
Ramp Volume

Montlake Blvd		Lk Wa Blvd
WB on ramp	WB exit	WB exit
4%	-35%	-34%
14,100	6,300	3,300
13,600	9,700	5,000

84th Ave NE	92nd Ave NE	Bellevue Way		108th Ave NE	
WB on ramp	WB exit	NB to WB on ramp	SB to WB on ramp	WB on ramp	WB exit
-56%	11%	-40%	-35%	-29%	-2%
2,500	4,200	2,100	3,300	2,200	12,000
5,700	3,800	3,500	5,100	3,100	12,300



5%	-33%	-45%
12,900	8,100	2,700
12,300	12,100	4,900
EB exit	EB on ramp	EB on ramp
Montlake Blvd	Lk Wa Blvd	



-51%	0%	-36%	-1%
2,800	4,900	5,800	10,400
5,700	4,900	9,000	10,500
EB exit	EB on ramp	EB exit	EB on ramp
84th Ave NE	92nd Ave NE	Bellevue Way	108th Ave NE

SR 520 Tolling: Traffic Monitoring

I-90 Detail

Wednesday, January 4, 2012

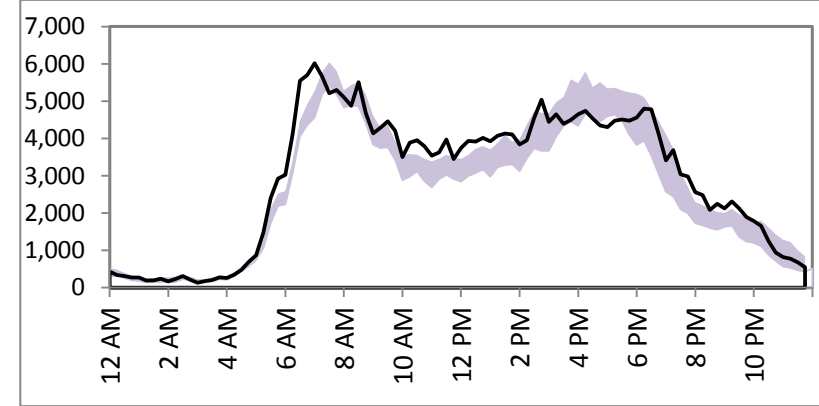
Mainline Volume



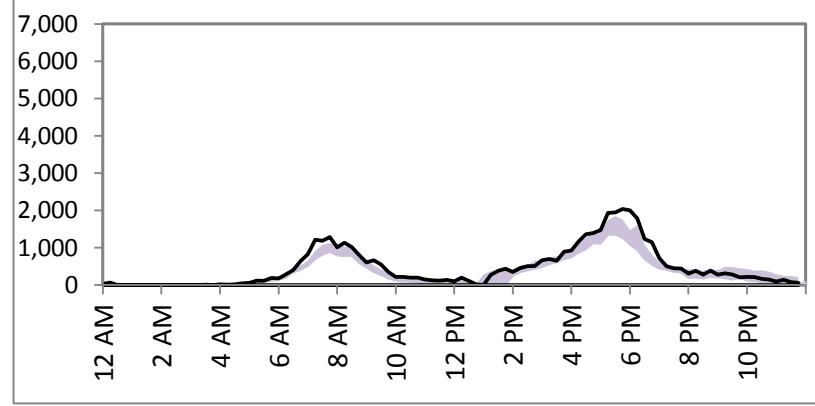
I-90 Bridge

WB	EB
8%	8%
74,100	74,300
68,800	69,100

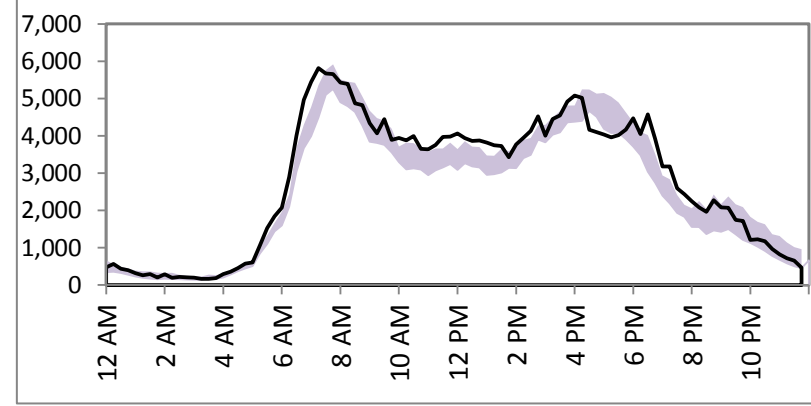
I-90 WB Bridge



I-90 REV Bridge



I-90 EB Bridge



Bellevue Way Ramp Volume

I-90 EB to Bellevue Way	Bellevue Way to I-90 WB
11%	9%
9,000	10,100
8,100	9,300

SR 520 Tolling: Traffic Monitoring

SR 522 Detail

Wednesday, January 4, 2012

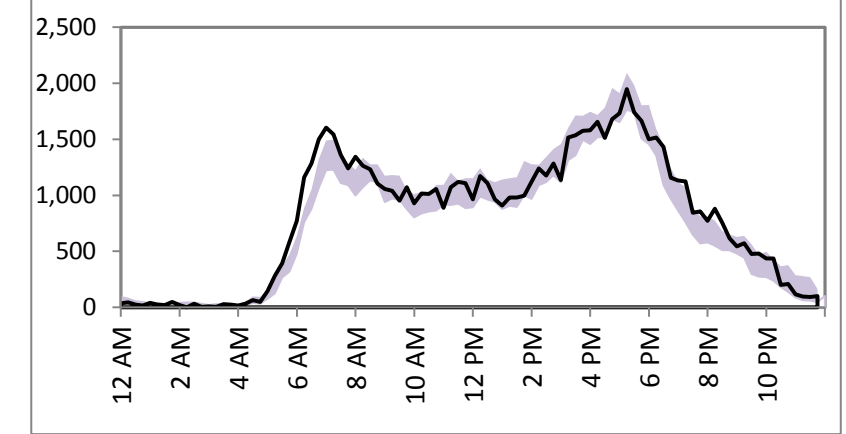
— Wednesday, January 4, 2012
 ■ Typical Range (10-90%ile, M-F, 10/29-11/18 & 11/26-12/16)

Mainline Volume

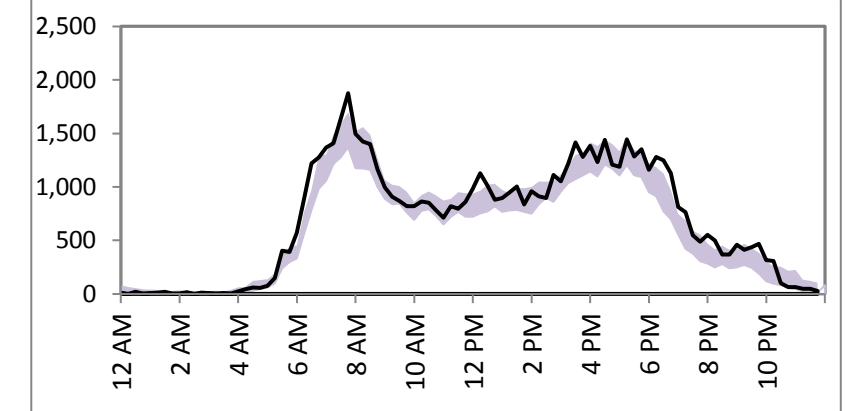


83rd PI NE	
WB	EB
3%	9%
19,500	16,600
18,900	15,200

SR 522 WB at 83rd Ave NE

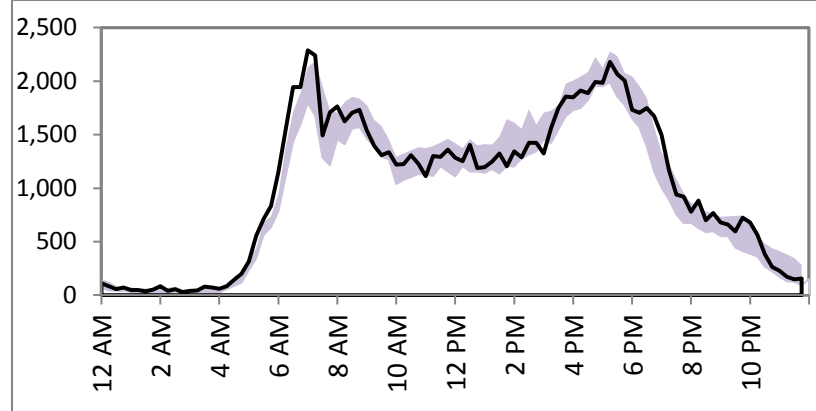


SR 522 EB at 83rd Ave NE



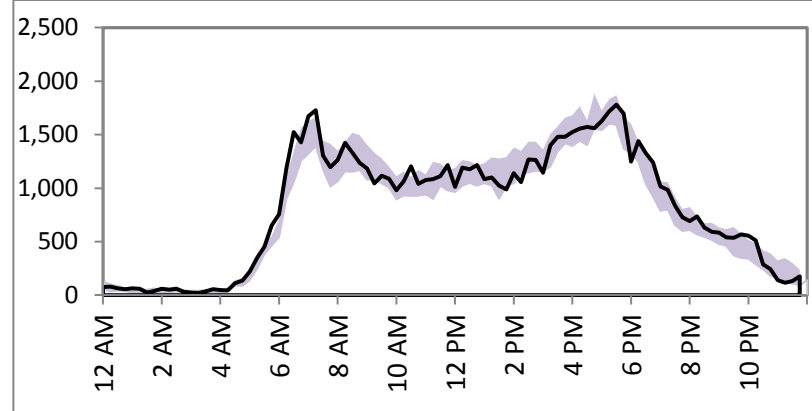
68th Ave NE	
WB	EB
2%	5%
24,600	17,600
24,000	16,700

SR 522 WB at 68th Ave NE



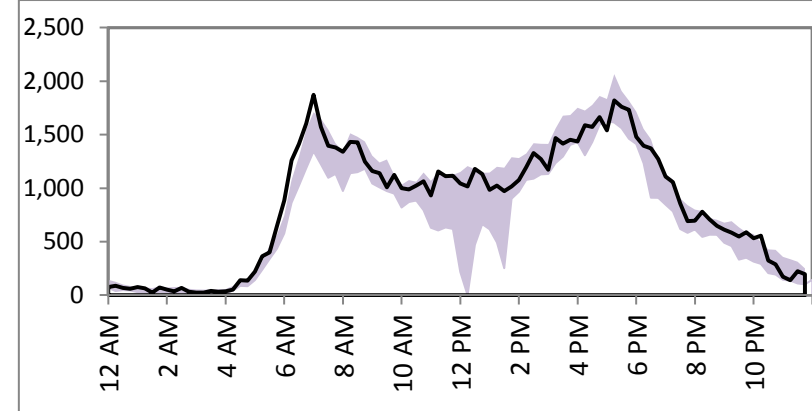
73rd Ave NE	
WB	EB
2%	5%
20,000	19,300
19,700	18,400

SR 522 WB at 73rd Ave NE



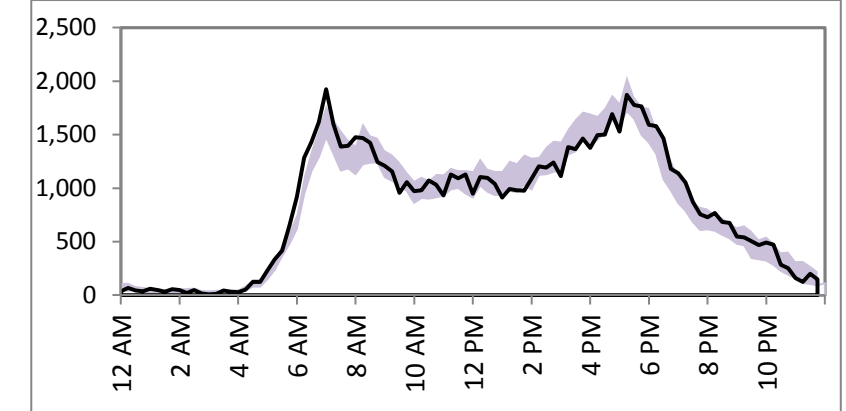
77th Ct NE	
WB	EB
1%	6%
20,300	19,800
20,100	18,600

SR 522 WB at 77th Ct NE

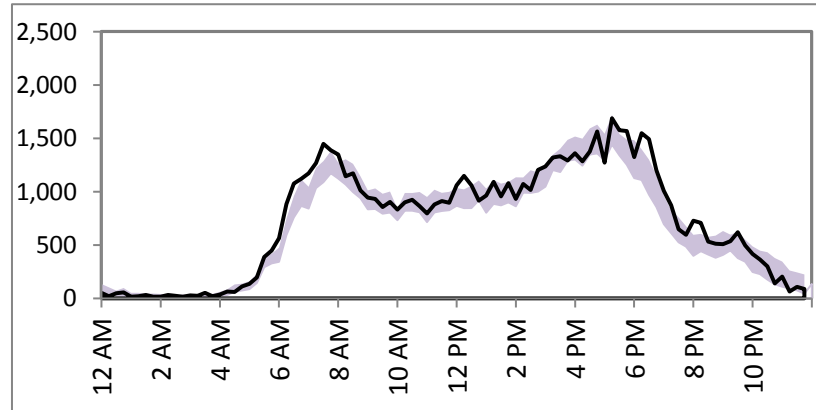


80th Ave NE	
WB	EB
0%	6%
20,100	18,900
20,000	17,800

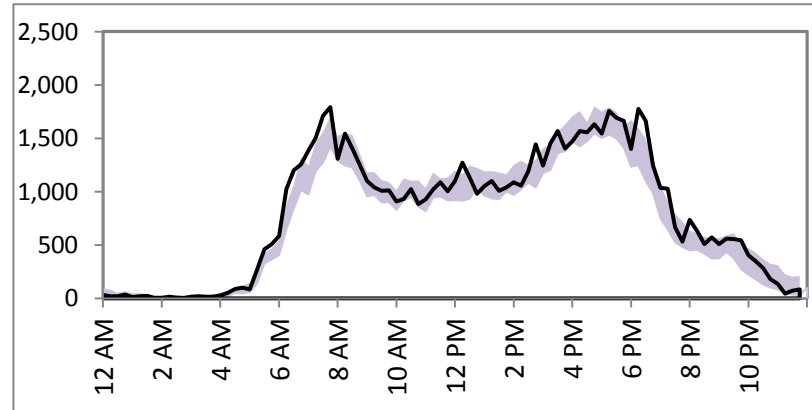
SR 522 WB at 80th Ave NE



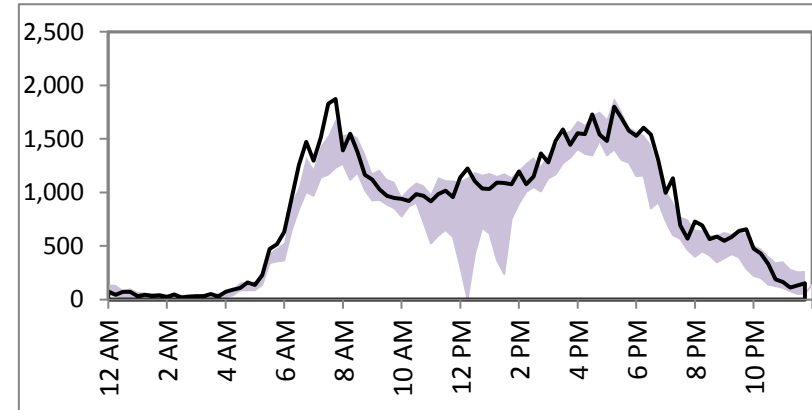
SR 522 EB at 68th Ave NE



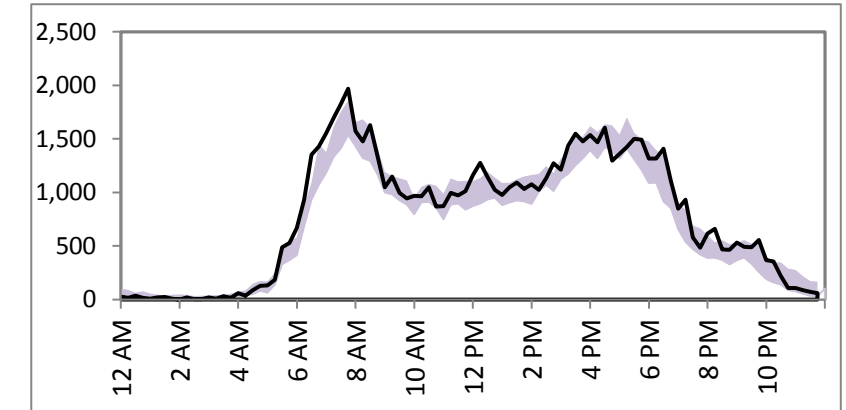
SR 522 EB at 73rd Ave NE



SR 522 EB at 77th Ct NE



SR 522 EB at 80th Ave NE

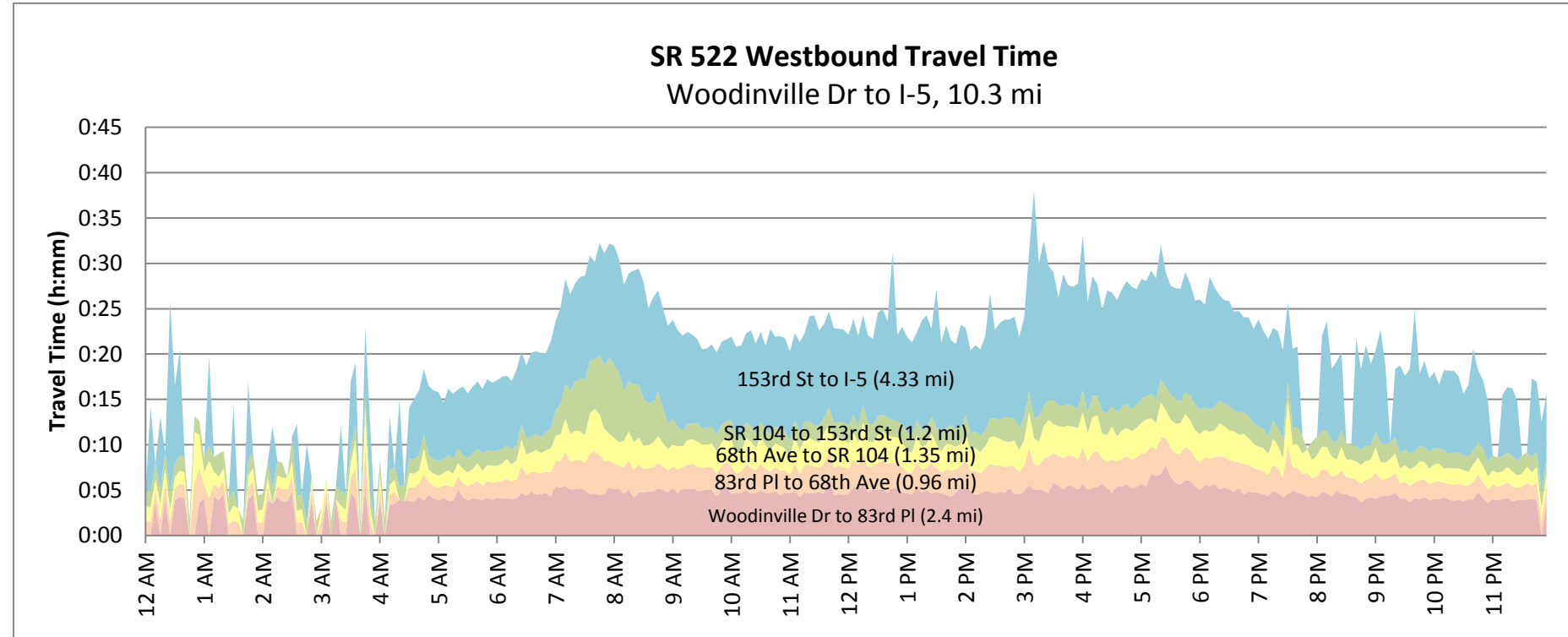


SR 520 Tolling: Traffic Monitoring

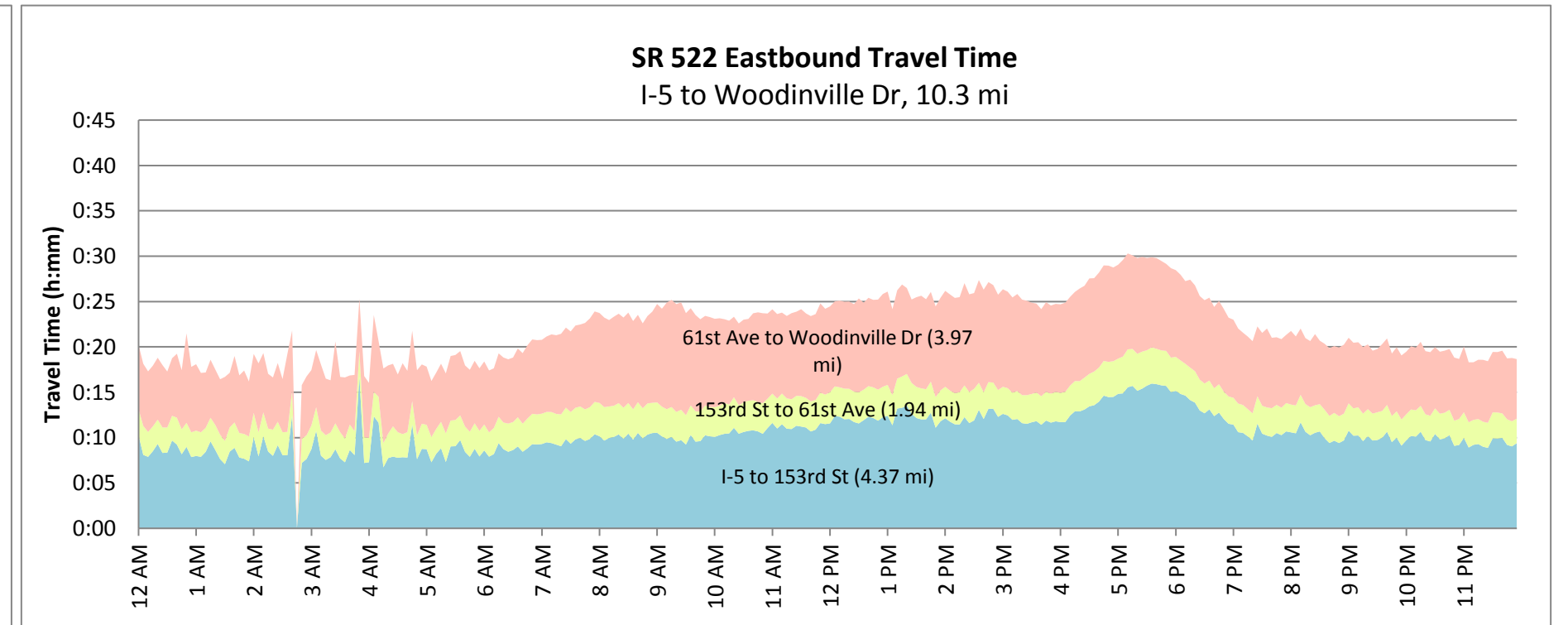
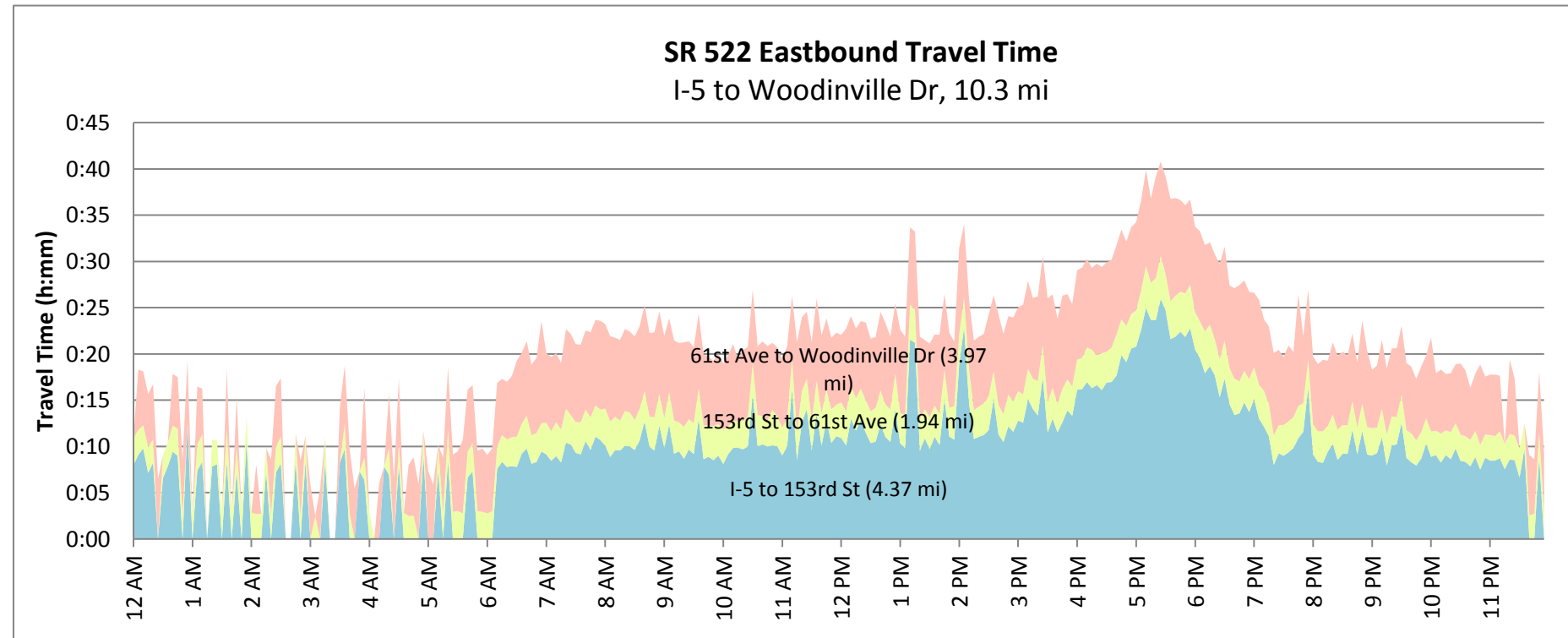
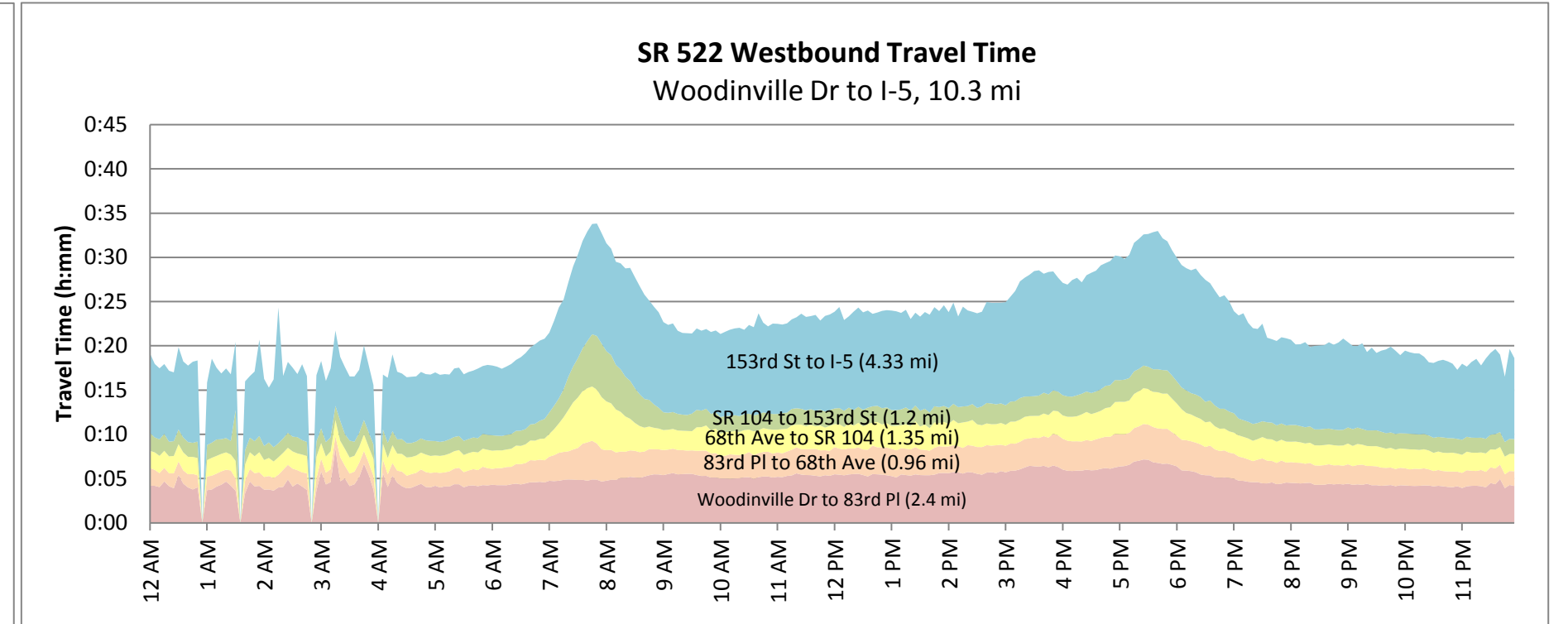
SR 522 Travel Times

Wednesday, January 4, 2012

1/4/2012



M-F, 10/29-11/18 & 11/26-12/16



Note: travel time data may be unavailable during time periods with low traffic volume