

Maintenance Accountability Process

Activity Service Level Targets and Service Levels Delivered

Northwest Region - CY 2006

Activity	1.0		1.9		2.0		2.9		3.0		3.9		4.0		4.9		5.0		5.9	
	+	A	-		+	B	-		+	C	-		+	D	-		+	F	-	
Group - 1 Roadway Maintenance and Operations																				
1A1 Pavement Patching & Repair*		✓		⊙																
1A2 Crack Sealing*						✓					⊙									
1A3 Shoulder Maintenance		✓								⊙										
1A4 Sweeping and Cleaning			✓		⊙															
1B1 Safety Patrol			✓							⊙										
Group - 2 Drainage Maintenance and Slope Repair																				
2A1 Maintain Ditches					✓		⊙													
2A2 Maintain Culverts							✓				⊙									
2A3 Maintain Catch Basins and Inlets					✓		⊙													
2A4 Maintain Detention/Retention Basins											✓	⊙								
2A5 Slope Repair		✓					⊙													
Group - 3 Roadside and Vegetation Management																				
3A1 Litter Pickup																⊙				✓
3A2 Noxious Weed Control		✓					⊙													
3A3 Nuisance Vegetation Control		✓					⊙													
3A4 Control of Vegetation Obstructions							✓	⊙												
3A5 Landscape Maintenance												⊙		✓						
Group - 4 Bridge and Urban Tunnel Maintenance and Operations																				
4A1 Bridge Deck Repair			✓				⊙													
4A2 Structural Bridge Repair									✓		⊙									
4A3 Bridge Cleaning							✓				⊙									
4B1 Movable and Floating Bridge Operations		✓			⊙															
4B3 Urban Tunnel Systems						✓	⊙													
Group - 5 Snow and Ice Control Operations																				
5B1 Snow and Ice Control Operations							✓		⊙											
Group - 6 Traffic Control Maintenance and Operations																				
6A1 Pavement Striping Maintenance***									⊙	✓										
6A2 Raised/Depressed Pavement Marker Maint.							⊙			✓										
6A3 Pavement Marking Maintenance											⊙		✓							
6A4 Regulatory Sign Maintenance									⊙					✓						
6A5 Guide Sign Maintenance							⊙			✓										
6A6 Guidepost Maintenance											✓	⊙								
6A7 Guardrail Maintenance		✓	⊙																	
6B1 Traffic Signal Systems									⊙					✓						
6B2 Highway Lighting Systems		✓			⊙															
6B3 Intelligent Transportation Systems					✓		⊙													
Group - 7 Rest Area Operations																				
7B1 Rest Area Operations						✓	⊙													

*Data collected from WSPMS

*** Revised Performance measure with revised target

Key

⊙ Current Law Budget Service Level Commitment



Service Level Currently Delivered by WSDOT

Maintenance Accountability Process

Activity Service Level Targets and Service Levels Delivered

Northwest Area 1 - CY 2006

Activity	1.0		1.9		2.0		2.9		3.0		3.9		4.0		4.9		5.0		5.9	
	+	A	-		+	B	-		+	C	-		+	D	-		+	F	-	
Group - 1 Roadway Maintenance and Operations																				
1A1 Pavement Patching & Repair*			✓	⊙																
1A2 Crack Sealing*									✓	⊙										
1A3 Shoulder Maintenance						✓			⊙											
1A4 Sweeping and Cleaning		✓		⊙																
1B1 Safety Patrol									⊙	✓										
Group - 2 Drainage Maintenance and Slope Repair																				
2A1 Maintain Ditches			✓	⊙																
2A2 Maintain Culverts									⊙				✓							
2A3 Maintain Catch Basins and Inlets						⊙					✓									
2A5 Slope Repair					✓	⊙														
Group - 3 Roadside and Vegetation Management																				
3A1 Litter Pickup														⊙					✓	
3A2 Noxious Weed Control			✓	⊙																
3A3 Nuisance Vegetation Control	✓					⊙														
3A4 Control of Vegetation Obstructions						⊙			✓											
Group - 4 Bridge and Urban Tunnel Maintenance and Operations																				
4A1 Bridge Deck Repair	✓					⊙														
4A3 Bridge Cleaning									✓	⊙										
Group - 5 Snow and Ice Control Operations																				
5B1 Snow and Ice Control Operations									⊙		✓									
Group - 6 Traffic Control Maintenance and Operations																				
6A2 Raised/Depressed Pavement Marker Maint.						⊙			✓											
6A3 Pavement Marking Maintenance											⊙								✓	
6A6 Guidepost Maintenance											✓	⊙								
6A7 Guardrail Maintenance		⊙		✓																

Key

- ⊙ Current Law Budget Service Level Commitment
- ✓ Service Level Currently Delivered by WSDOT

Maintenance Accountability Process
Activity Service Level Targets and Service Levels Delivered
Northwest Area 2 - CY 2006

Activity	1.0		1.9		2.0		2.9		3.0		3.9		4.0		4.9		5.0		5.9	
	+	A	-		+	B	-		+	C	-		+	D	-		+	F	-	
Group - 1 Roadway Maintenance and Operations																				
1A1 Pavement Patching & Repair*		✓		⊙																
1A2 Crack Sealing*					✓						⊙									
1A3 Shoulder Maintenance			✓						⊙											
1A4 Sweeping and Cleaning			✓	⊙																
1B1 Safety Patrol			✓						⊙											
Group - 2 Drainage Maintenance and Slope Repair																				
2A1 Maintain Ditches				✓	⊙															
2A2 Maintain Culverts									✓	⊙										
2A3 Maintain Catch Basins and Inlets				✓	⊙															
2A5 Slope Repair				✓	⊙															
Group - 3 Roadside and Vegetation Management																				
3A1 Litter Pickup														✓	⊙					
3A2 Noxious Weed Control			✓		⊙															
3A3 Nuisance Vegetation Control				✓		⊙														
3A4 Control of Vegetation Obstructions						⊙	✓													
Group - 4 Bridge and Urban Tunnel Maintenance and Operations																				
4A1 Bridge Deck Repair					✓	⊙														
4A3 Bridge Cleaning				✓					⊙											
Group - 5 Snow and Ice Control Operations																				
5B1 Snow and Ice Control Operations									⊙	✓										
Group - 6 Traffic Control Maintenance and Operations																				
6A2 Raised/Depressed Pavement Marker Maint.					⊙					✓										
6A3 Pavement Marking Maintenance									✓	⊙										
6A6 Guidepost Maintenance									✓	⊙										
6A7 Guardrail Maintenance	✓	⊙																		

*Data collected from WSPMS

*** Revised Performance measure with revised target

Key

- ⊙ Current Law Budget Service Level Commitment
- ✓ Service Level Currently Delivered by WSDOT

Maintenance Accountability Process

Activity Service Level Targets and Service Levels Delivered

Northwest Area 3 - CY 2006

Activity	1.0		1.9		2.0		2.9		3.0		3.9		4.0		4.9		5.0		5.9	
	+	A	-		+	B	-		+	C	-		+	D	-		+	F	-	
Group - 1 Roadway Maintenance and Operations																				
1A1 Pavement Patching & Repair*		✓			⊙															
1A2 Crack Sealing*		✓									⊙									
1A3 Shoulder Maintenance		✓							⊙											
1A4 Sweeping and Cleaning		✓			⊙															
1B1 Safety Patrol	✓								⊙											
Group - 2 Drainage Maintenance and Slope Repair																				
2A1 Maintain Ditches						✓	⊙													
2A2 Maintain Culverts	✓									⊙										
2A3 Maintain Catch Basins and Inlets	✓					⊙														
2A5 Slope Repair		✓			⊙															
Group - 3 Roadside and Vegetation Management																				
3A1 Litter Pickup														⊙						✓
3A2 Noxious Weed Control	✓					⊙														
3A3 Nuisance Vegetation Control		✓					⊙													
3A4 Control of Vegetation Obstructions			✓			⊙														
Group - 4 Bridge and Urban Tunnel Maintenance and Operations																				
4A1 Bridge Deck Repair		✓					⊙													
4A3 Bridge Cleaning						✓				⊙										
Group - 5 Snow and Ice Control Operations																				
5B1 Snow and Ice Control Operations						✓			⊙											
Group - 6 Traffic Control Maintenance and Operations																				
6A2 Raised/Depressed Pavement Marker Maint.						✓	⊙													
6A3 Pavement Marking Maintenance										✓		⊙								
6A6 Guidepost Maintenance											⊙			✓						
6A7 Guardrail Maintenance		⊙			✓															

*Data collected from WSPMS

*** Revised Performance measure with revised target

Key

- ⊙ Current Law Budget Service Level Commitment
- ✓ Service Level Currently Delivered by WSDOT

Maintenance Accountability Process

Activity Service Level Targets and Service Levels Delivered

Northwest Area 4 - CY 2006

Activity	1.0		1.9		2.0		2.9		3.0		3.9		4.0		4.9		5.0		5.9	
	+	A	-		+	B	-		+	C	-		+	D	-		+	F	-	
Group - 1 Roadway Maintenance and Operations																				
1A1 Pavement Patching & Repair*		✓		⊙																
1A2 Crack Sealing*					✓						⊙									
1A3 Shoulder Maintenance		✓							⊙											
1A4 Sweeping and Cleaning	✓				⊙															
1B1 Safety Patrol	✓								⊙											
Group - 2 Drainage Maintenance and Slope Repair																				
2A1 Maintain Ditches			✓		⊙															
2A2 Maintain Culverts								✓	⊙											
2A3 Maintain Catch Basins and Inlets					✓				⊙											
2A5 Slope Repair	✓					⊙														
Group - 3 Roadside and Vegetation Management																				
3A1 Litter Pickup														⊙					✓	
3A2 Noxious Weed Control	✓					⊙														
3A3 Nuisance Vegetation Control	✓						⊙													
3A4 Control of Vegetation Obstructions							⊙		✓											
Group - 4 Bridge and Urban Tunnel Maintenance and Operations																				
4A1 Bridge Deck Repair					✓	⊙														
4A3 Bridge Cleaning					✓					⊙										
Group - 5 Snow and Ice Control Operations																				
5B1 Snow and Ice Control Operations				✓					⊙											
Group - 6 Traffic Control Maintenance and Operations																				
6A2 Raised/Depressed Pavement Marker Maint.					✓	⊙														
6A3 Pavement Marking Maintenance											✓	⊙								
6A6 Guidepost Maintenance										✓		⊙								
6A7 Guardrail Maintenance		✓	⊙																	

*Data collected from WSPMS

*** Revised Performance measure with revised target

Key

- ⊙ Current Law Budget Service Level Commitment
- ✓ Service Level Currently Delivered by WSDOT

Maintenance Accountability Process

Activity Service Level Targets and Service Levels Delivered

Northwest Area 5 - CY 2006

Activity	1.0		1.9		2.0		2.9		3.0		3.9		4.0		4.9		5.0		5.9	
	+	A	-		+	B	-		+	C	-		+	D	-		+	F	-	
Group - 1 Roadway Maintenance and Operations																				
1A1 Pavement Patching & Repair*		✓		⊙																
1A2 Crack Sealing*									✓	⊙										
1A3 Shoulder Maintenance		✓							⊙											
1A4 Sweeping and Cleaning					⊙				✓											
1B1 Safety Patrol		✓							⊙											
Group - 2 Drainage Maintenance and Slope Repair																				
2A1 Maintain Ditches						✓	⊙													
2A2 Maintain Culverts							✓			⊙										
2A3 Maintain Catch Basins and Inlets			✓					⊙												
2A5 Slope Repair	✓							⊙												
Group - 3 Roadside and Vegetation Management																				
3A1 Litter Pickup						✓	⊙								⊙					✓
3A2 Noxious Weed Control						✓	⊙													
3A3 Nuisance Vegetation Control			✓						⊙											
3A4 Control of Vegetation Obstructions							✓	⊙												
Group - 4 Bridge and Urban Tunnel Maintenance and Operations																				
4A1 Bridge Deck Repair							✓	⊙												
4A3 Bridge Cleaning						✓				⊙										
Group - 5 Snow and Ice Control Operations																				
5B1 Snow and Ice Control Operations						✓				⊙										
Group - 6 Traffic Control Maintenance and Operations																				
6A2 Raised/Depressed Pavement Marker Maint.							⊙	✓												
6A3 Pavement Marking Maintenance											⊙				✓					
6A6 Guidepost Maintenance											⊙		✓							
6A7 Guardrail Maintenance		✓	⊙																	

*Data collected from WSPMS

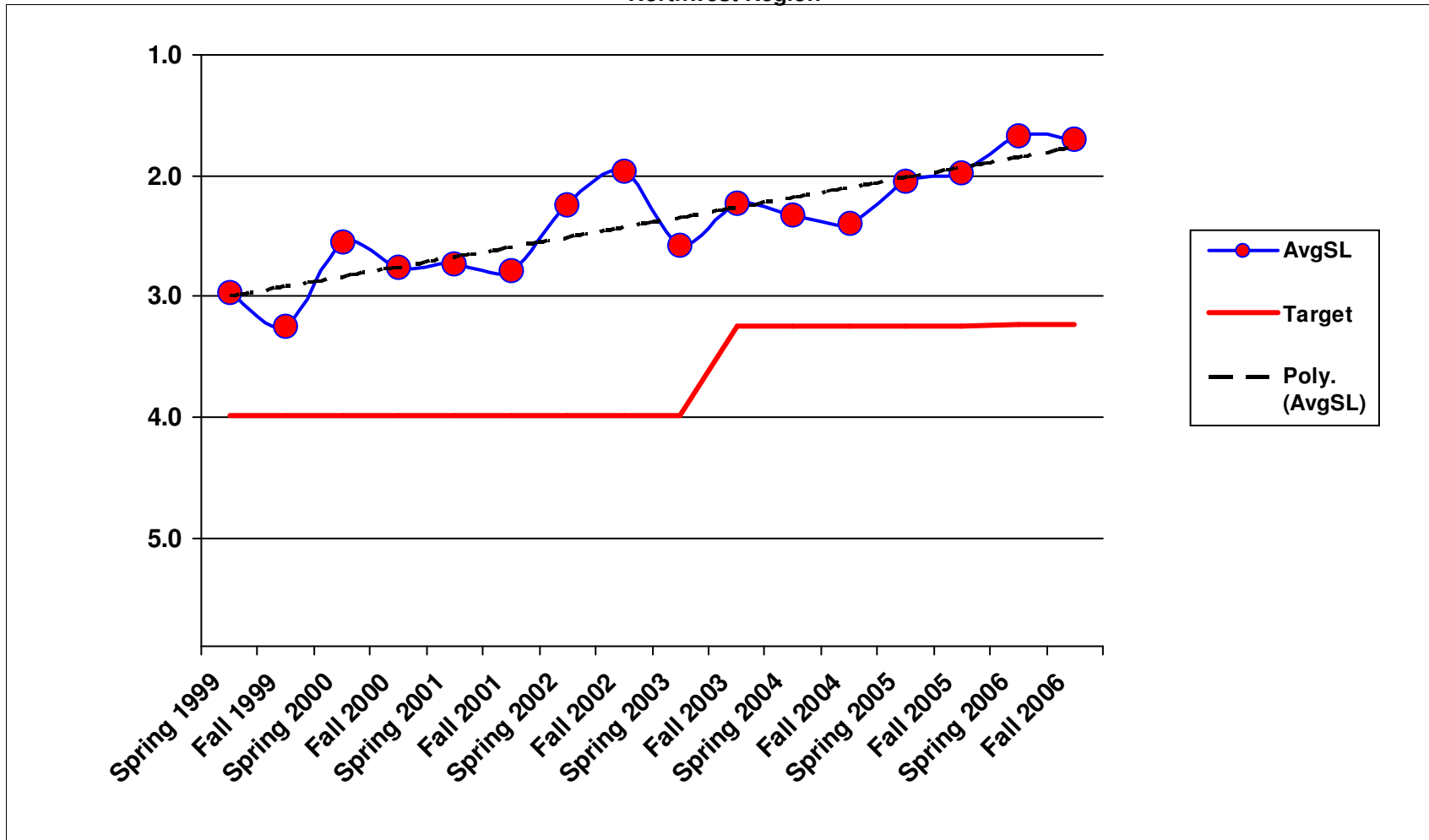
*** Revised Performance measure with revised target

Key

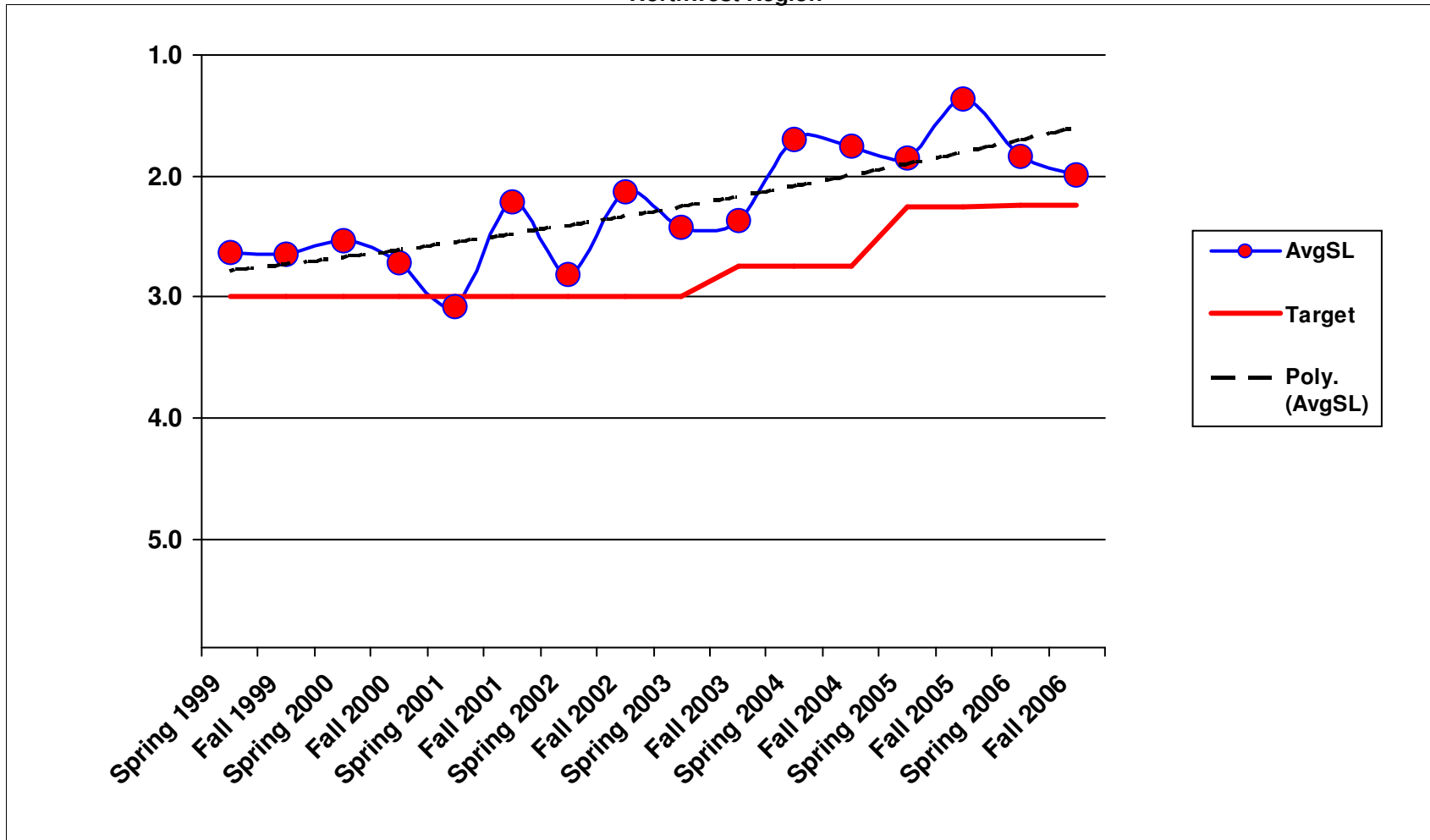
⊙ Current Law Budget Service Level Commitment

✓ Service Level Currently Delivered by WSDOT

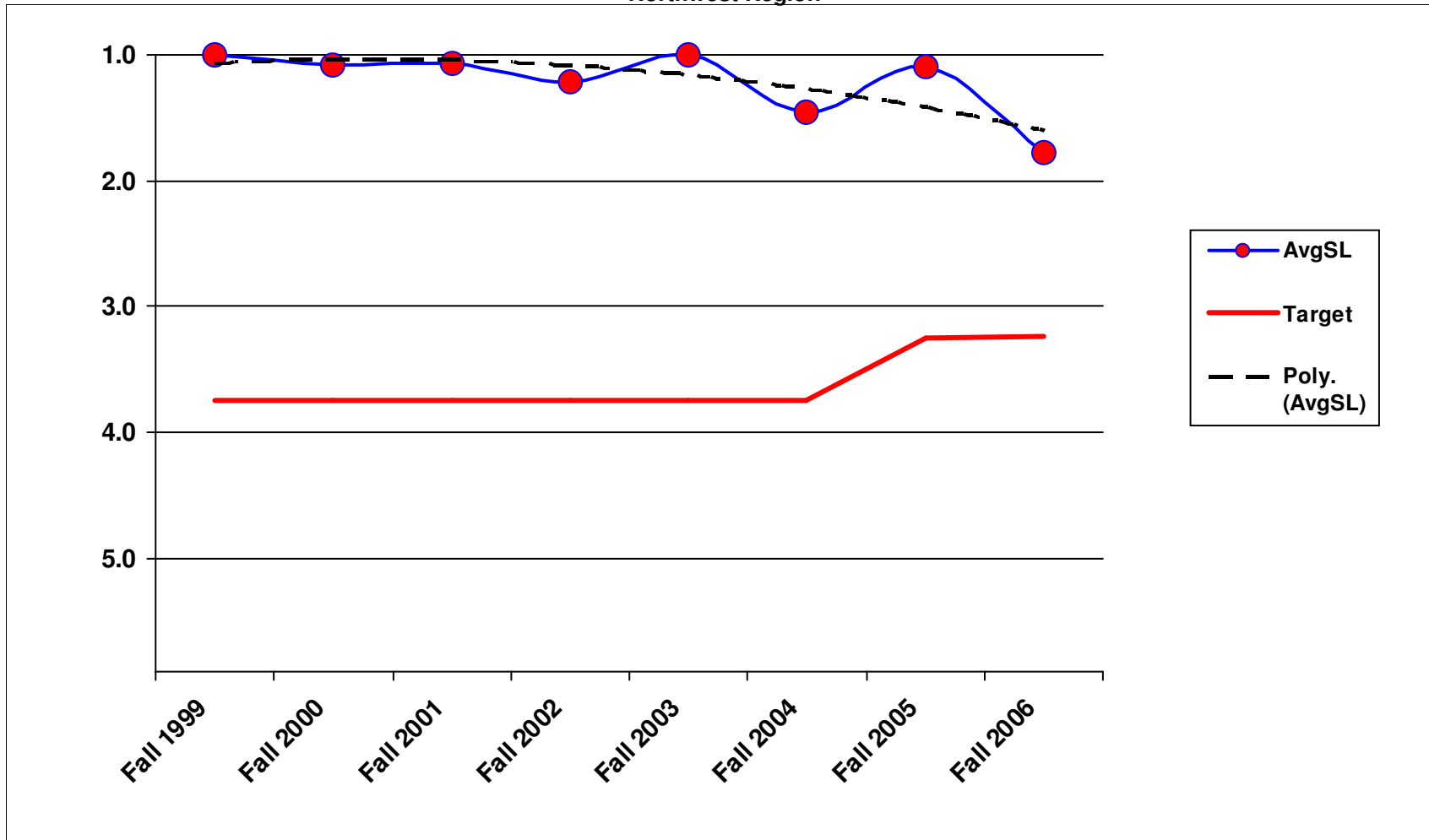
1A3 - Shoulder Maintenance Northwest Region



1A4 - Sweeping and Cleaning Northwest Region

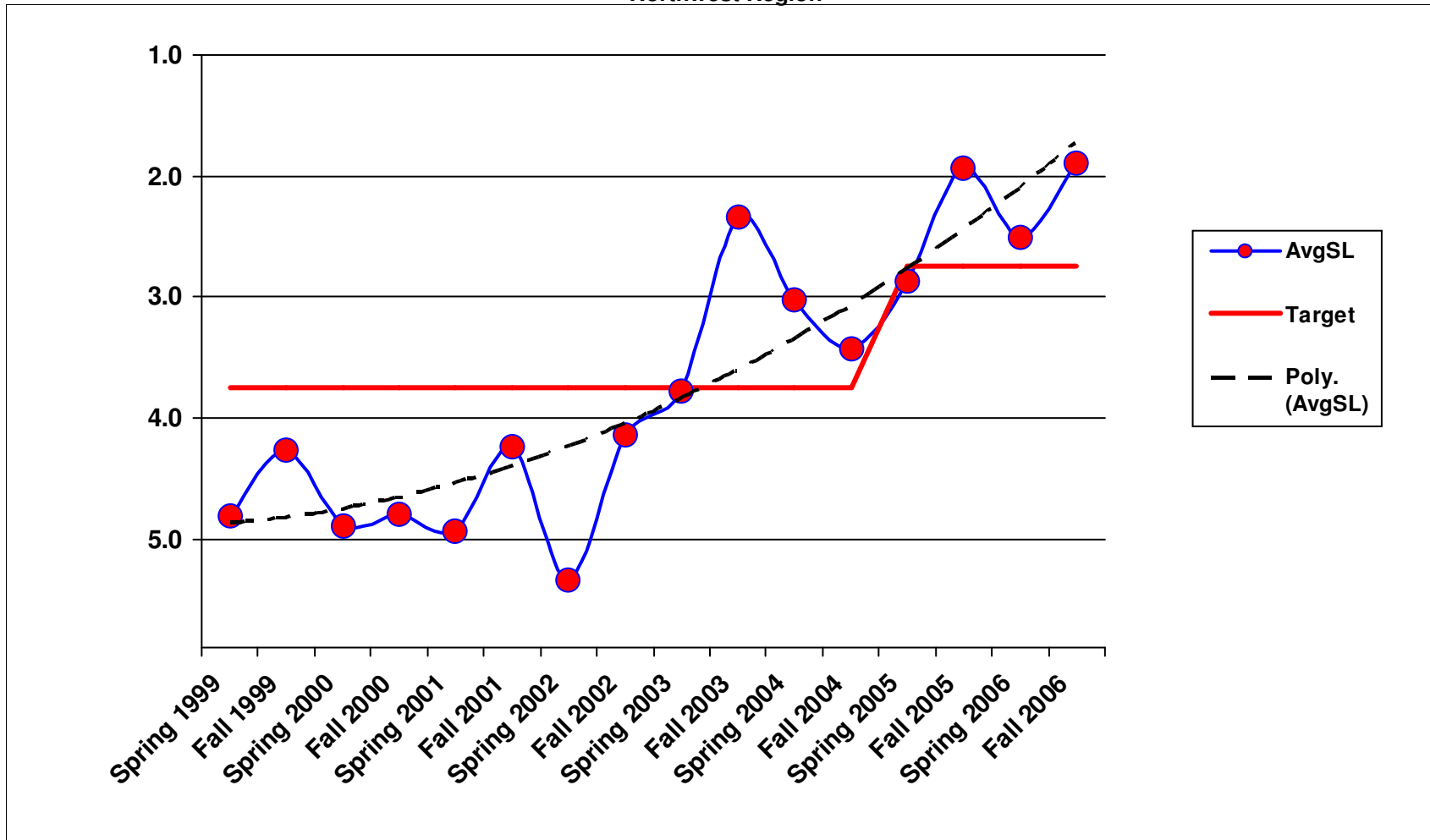


1B1 - Safety Patrol
Northwest Region

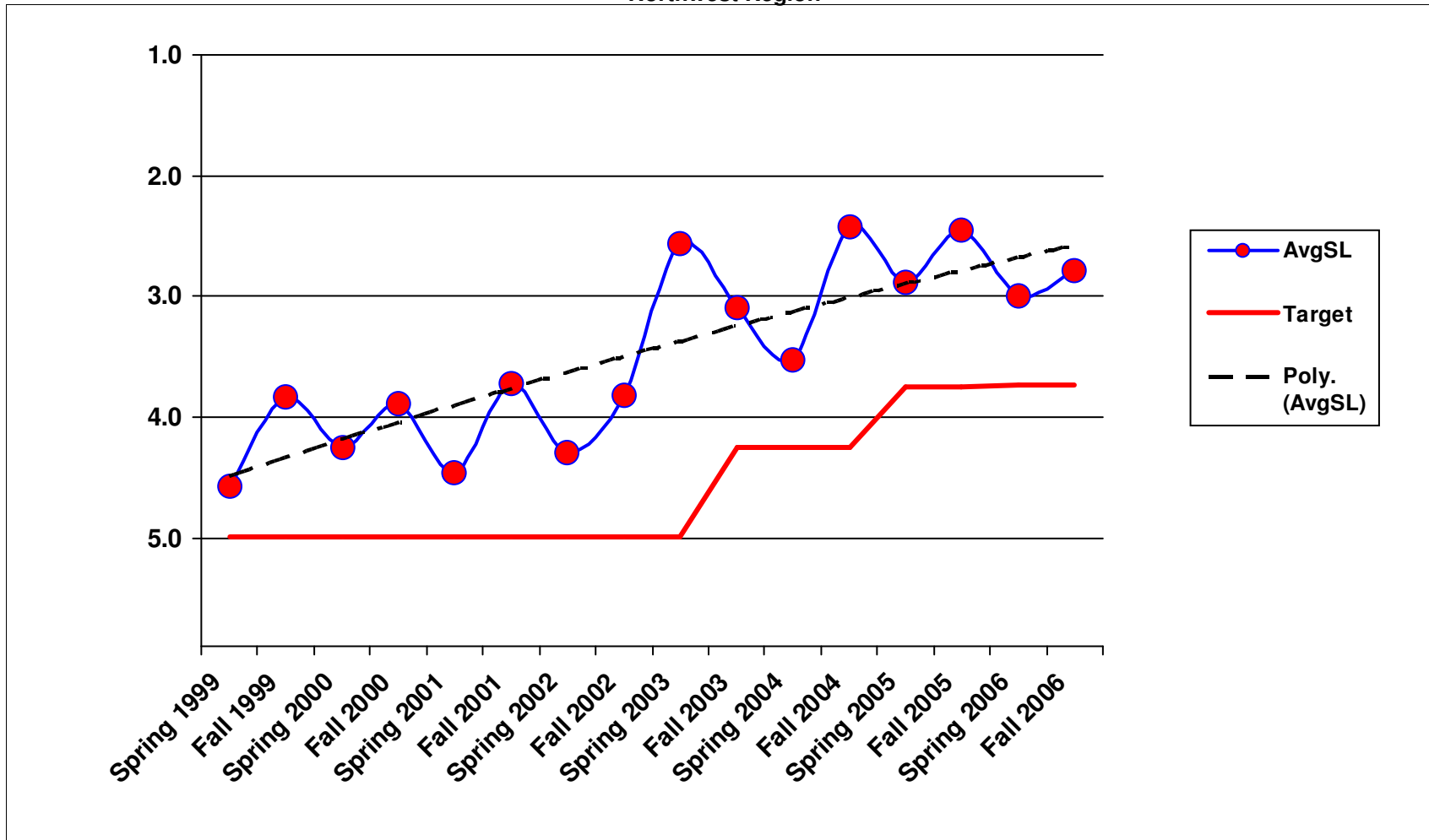


1/23/2007

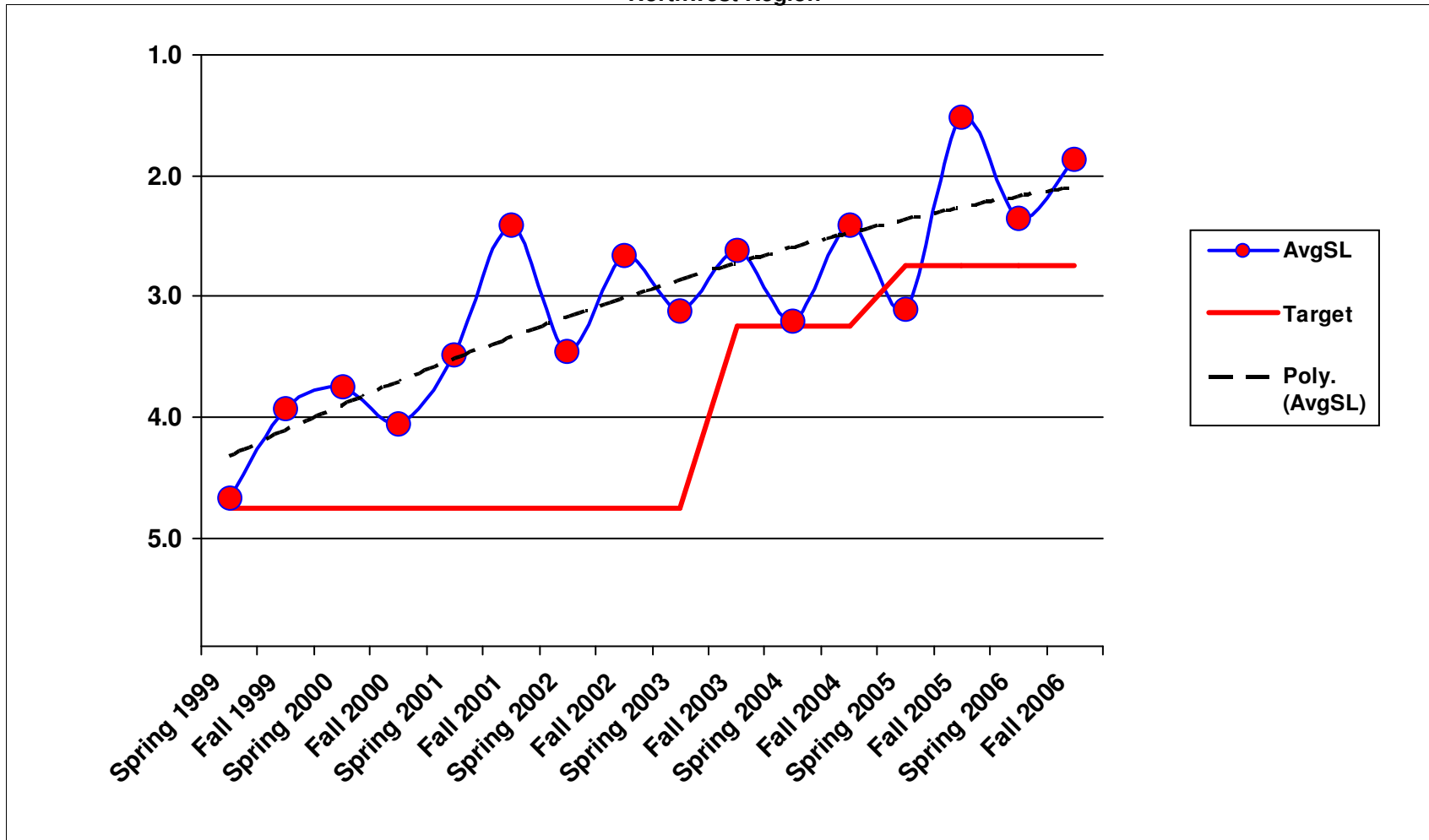
2A1 - Maintain Ditches
Northwest Region



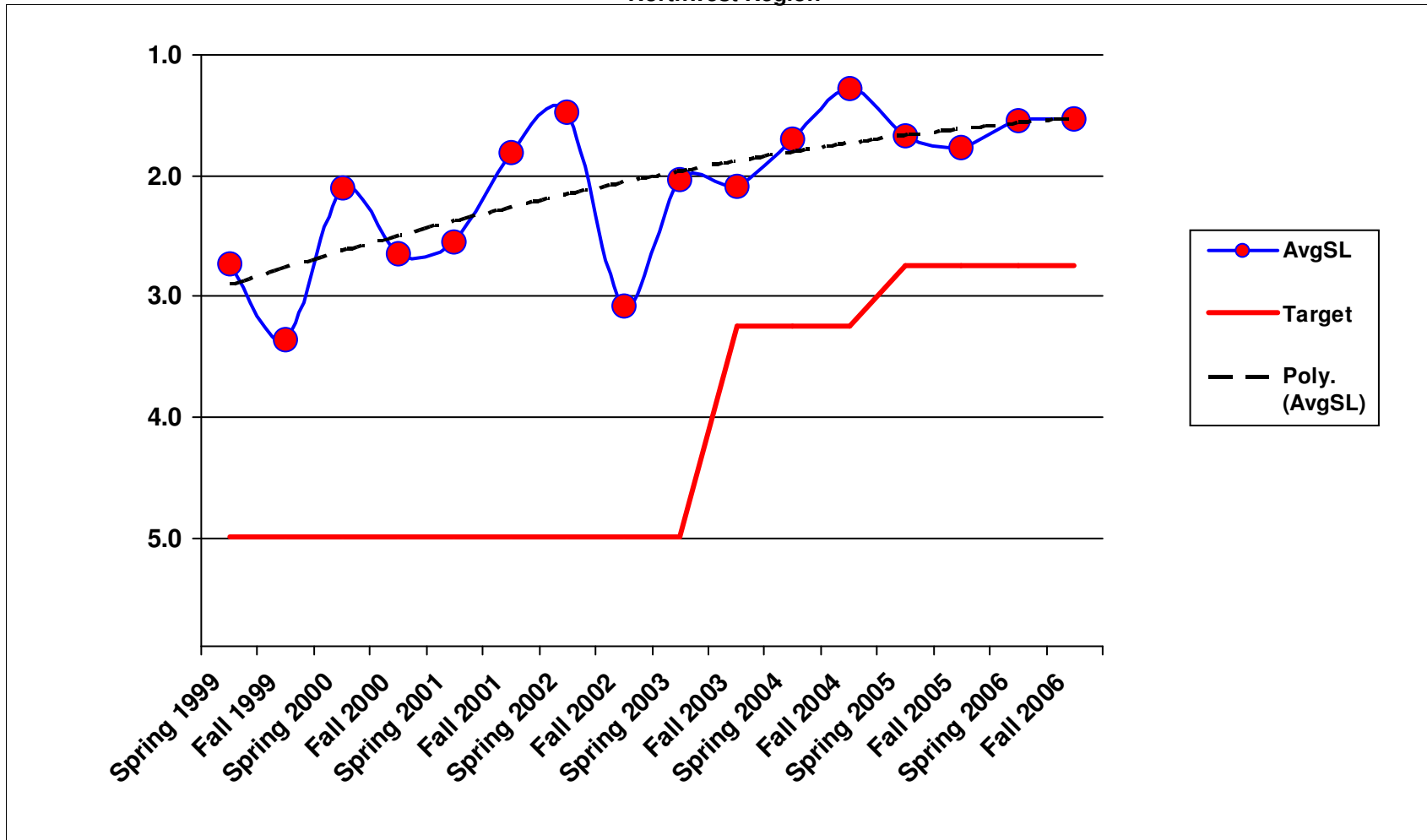
2A2 - Maintain Culverts
Northwest Region



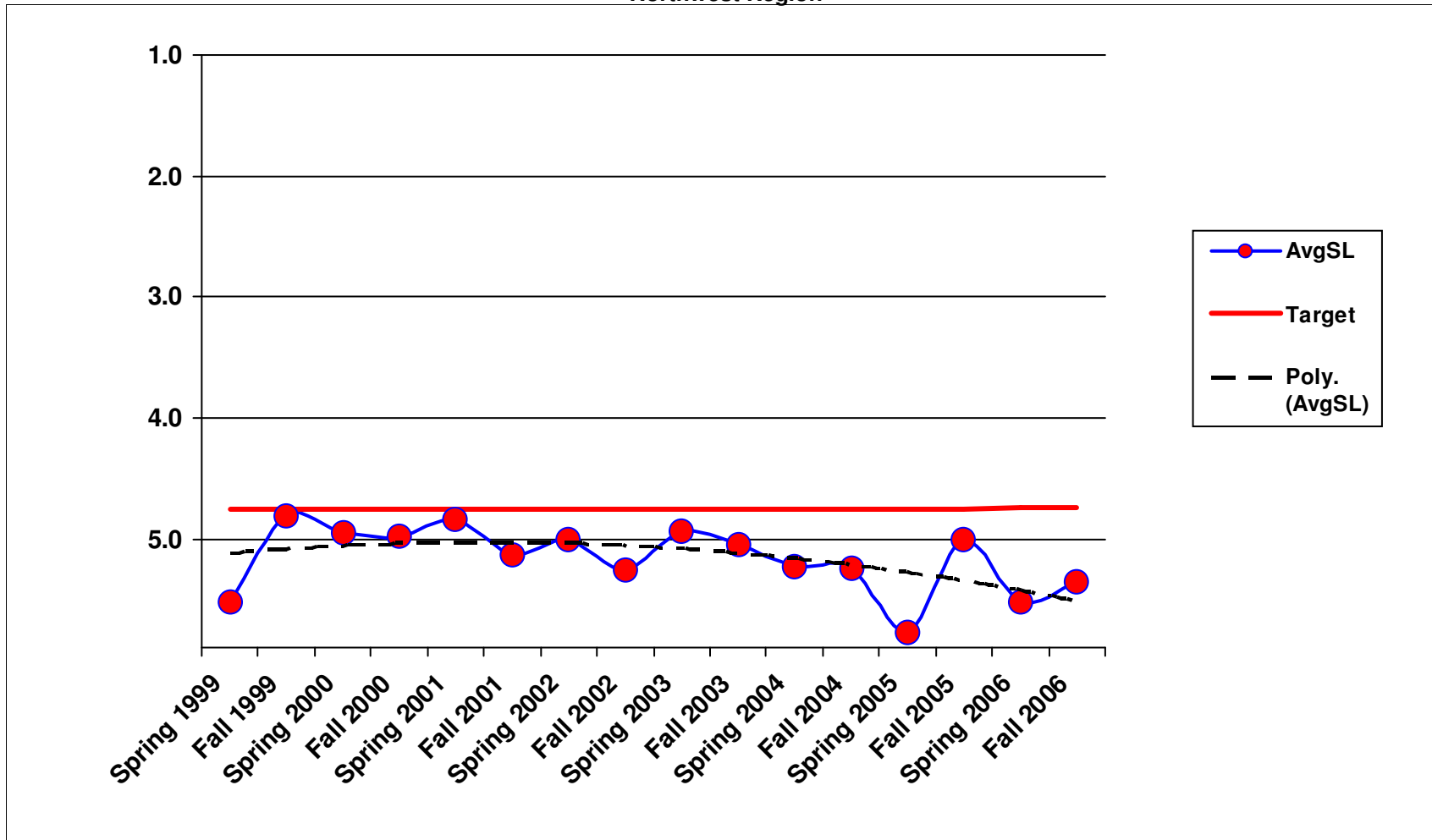
2A3 - Maintain Catch Basins and Inlets
Northwest Region



2A5 - Slope Repair Northwest Region

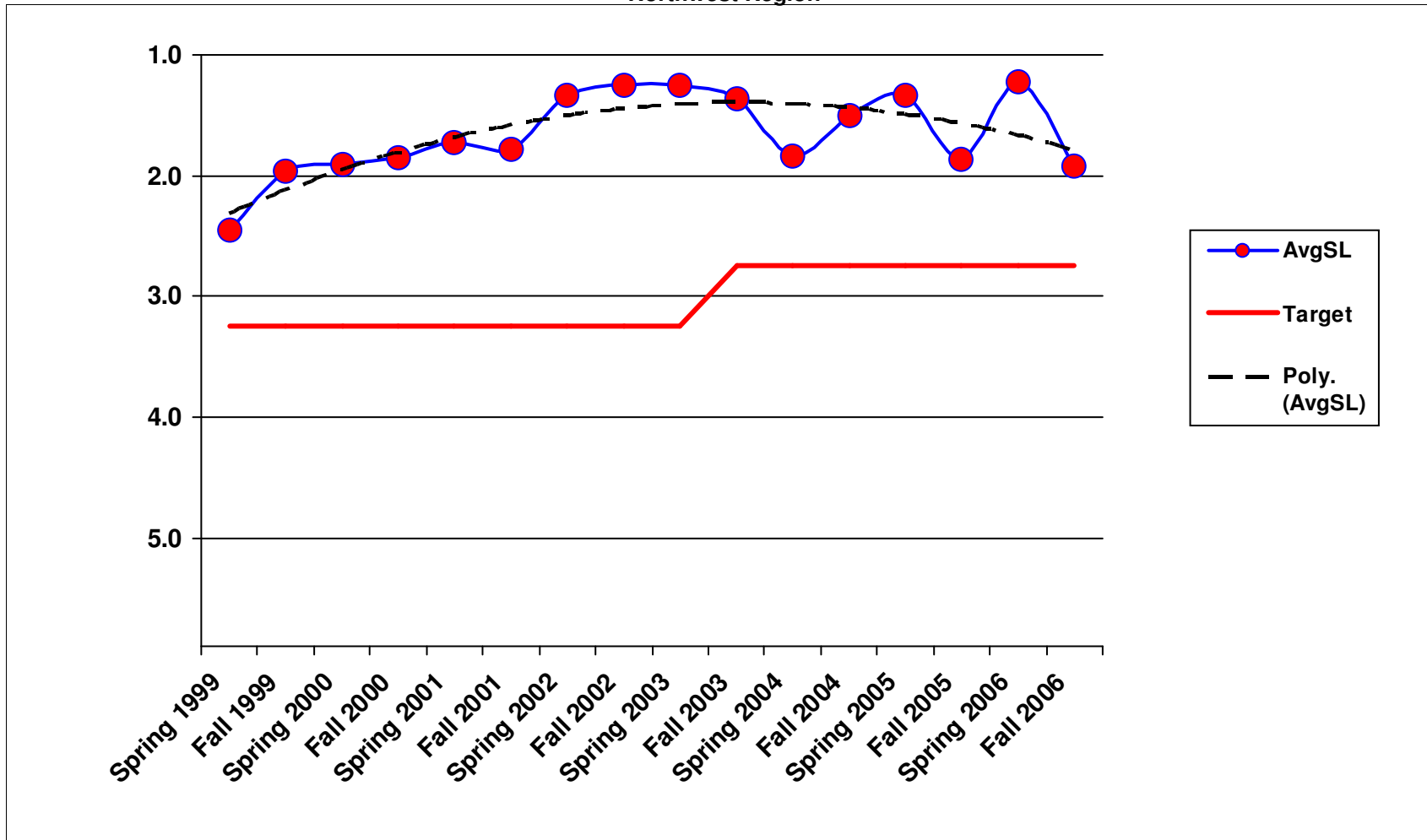


3A1 - Litter Pickup Northwest Region

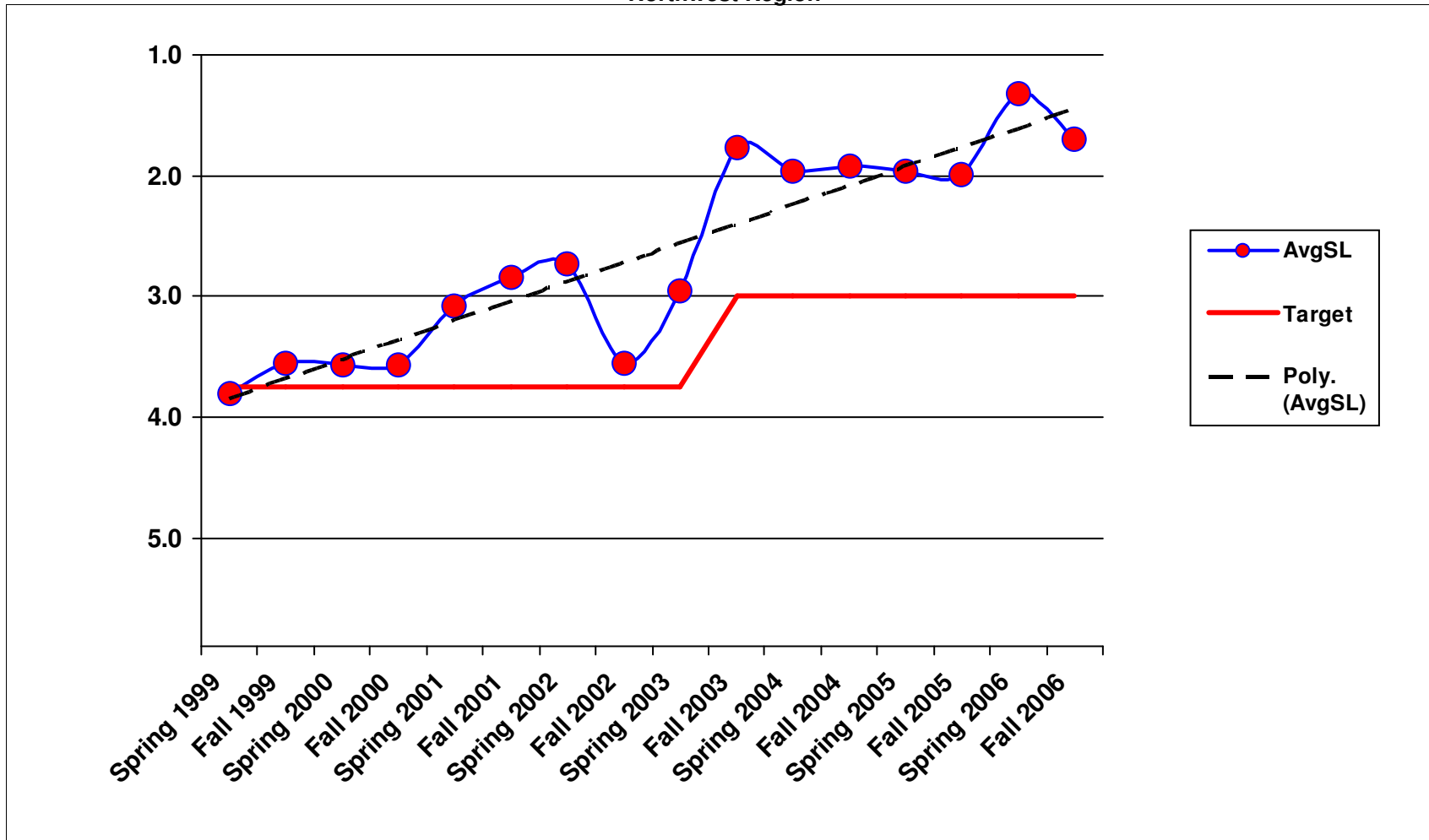


1/23/2007

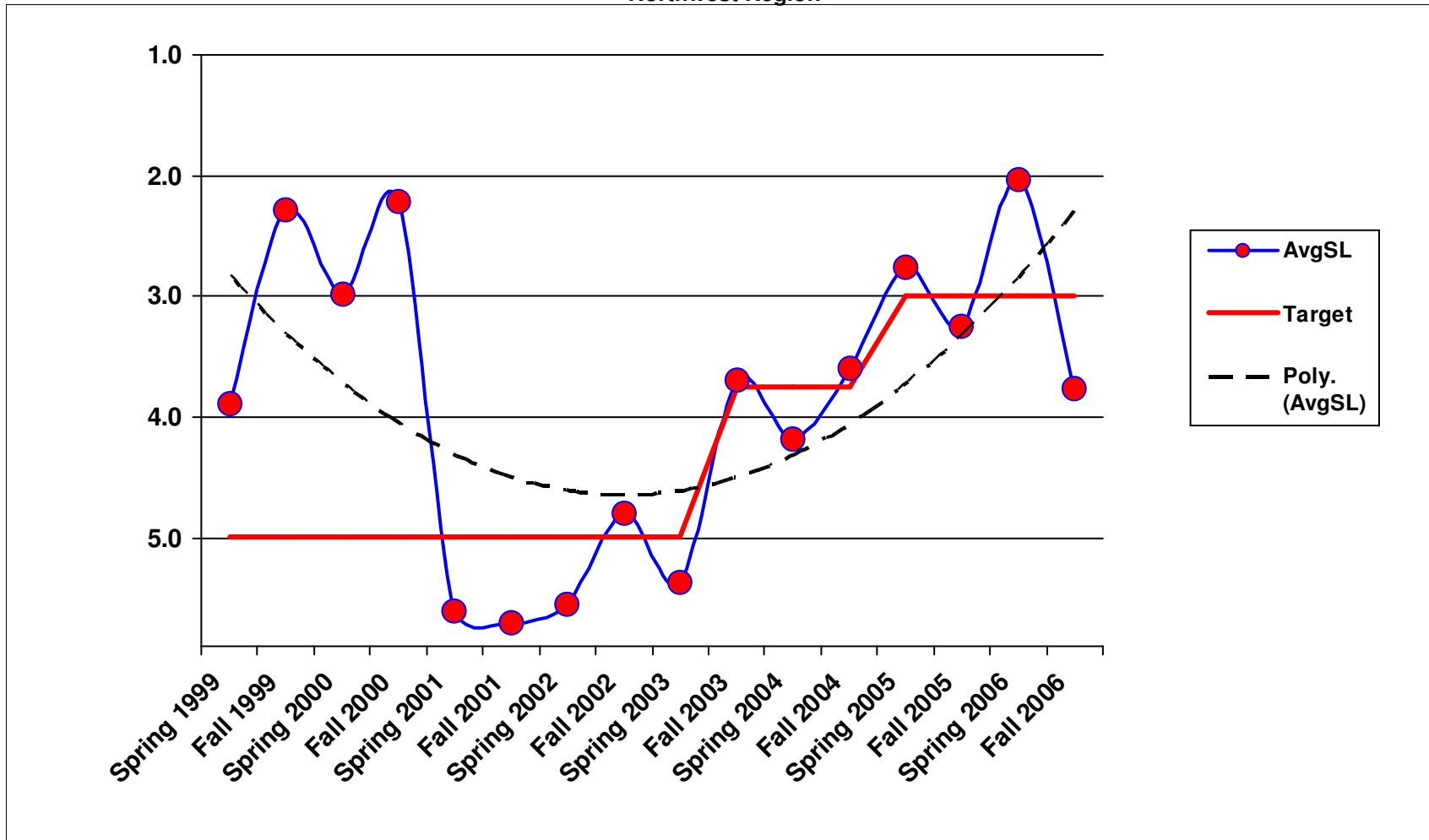
3A2 - Noxious Weed Control Northwest Region



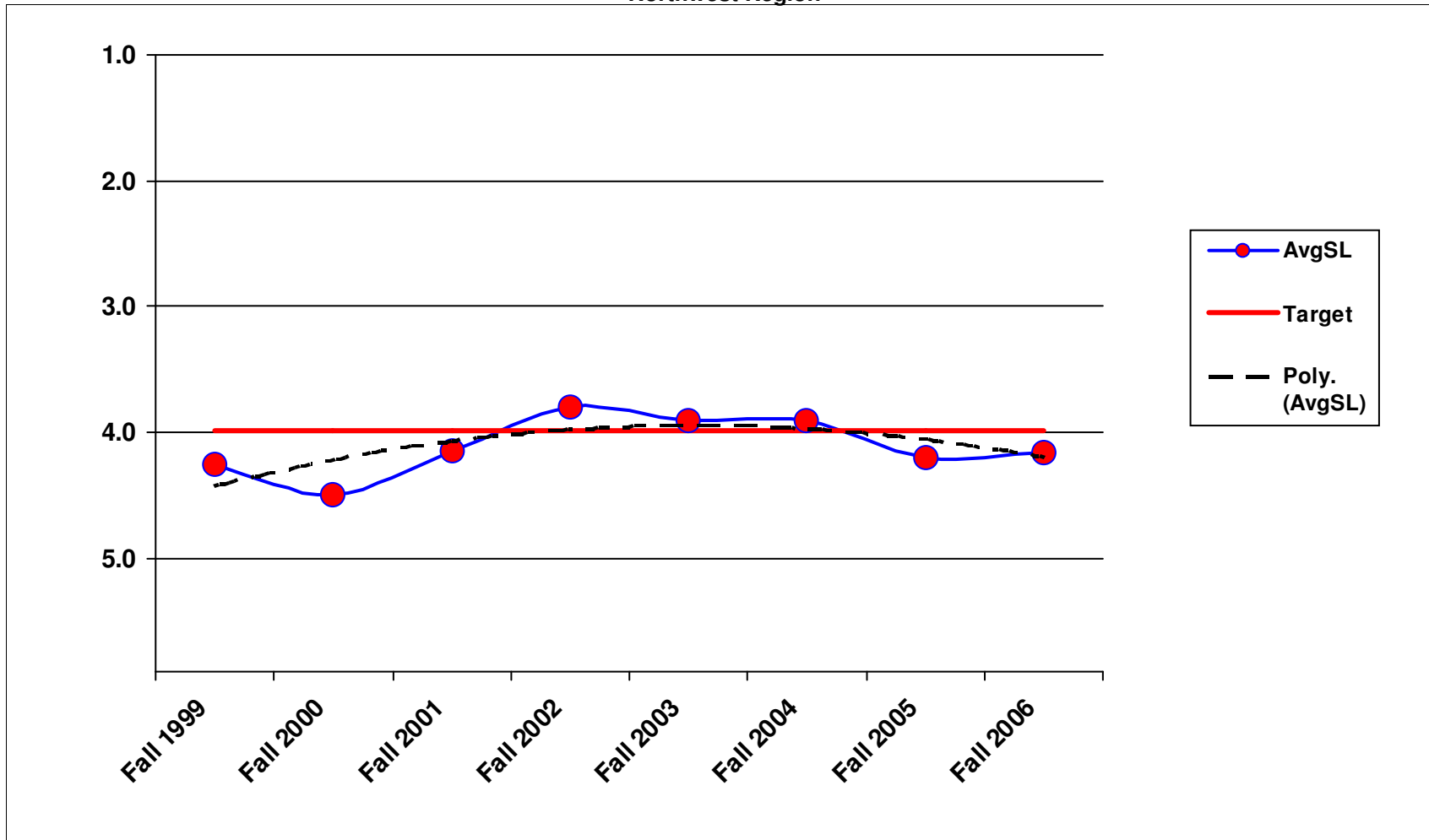
3A3 - Nuisance Vegetation Control
Northwest Region



3A4 - Control of Vegetation Obstructions Northwest Region

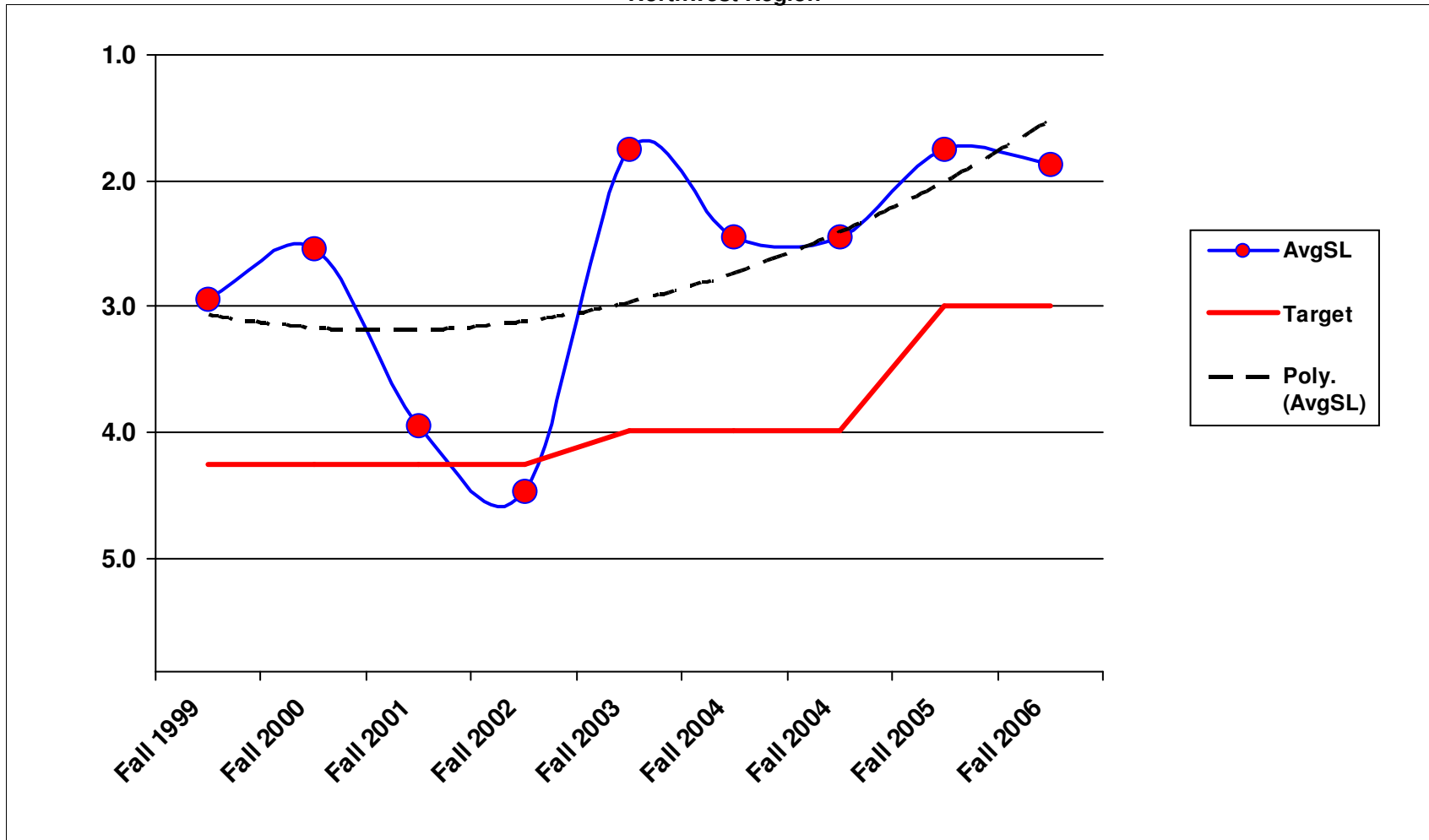


3A5 - Landscape Maintenance Northwest Region

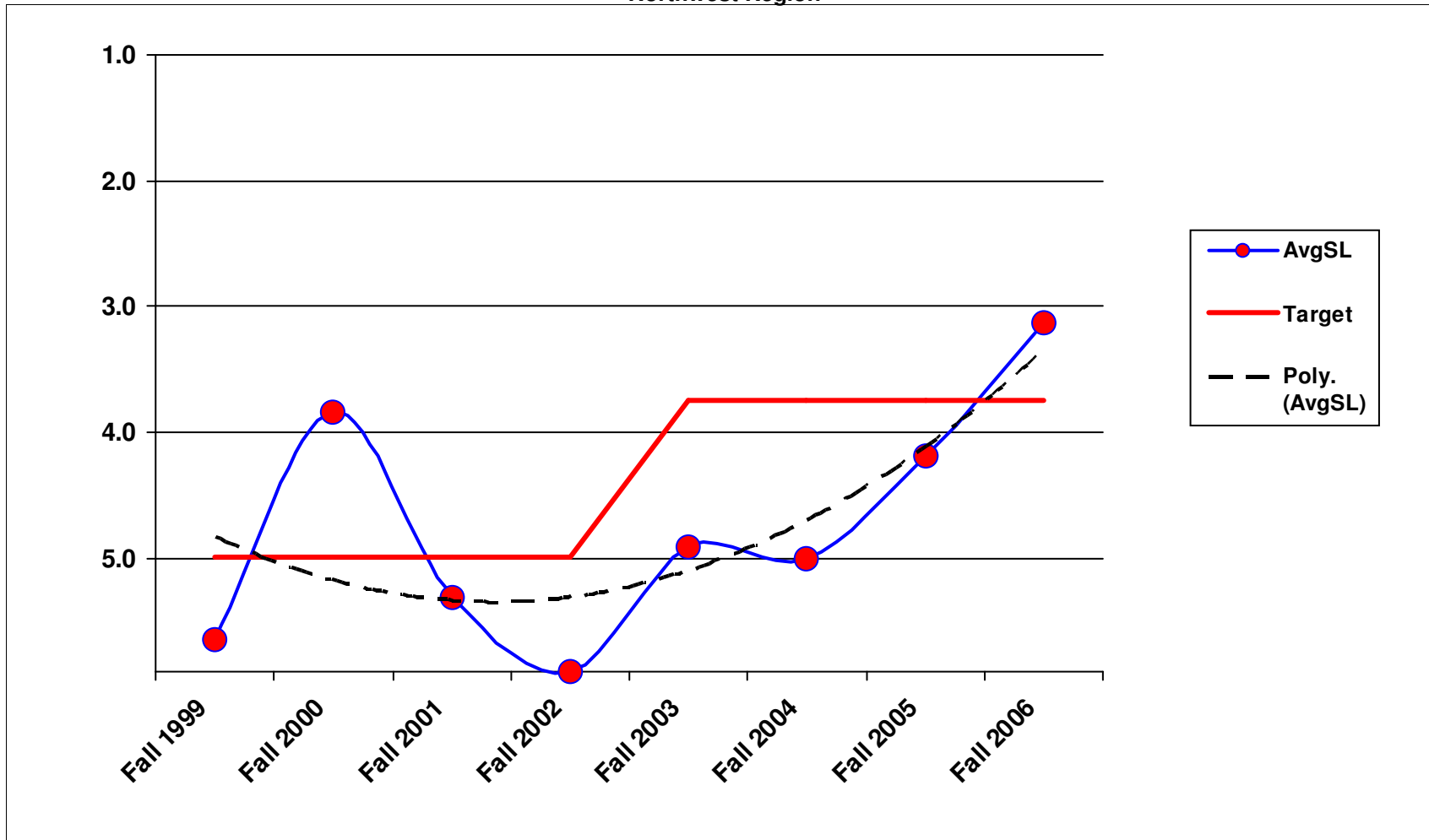


1/23/2007

4A1 - Bridge Deck Repair
Northwest Region

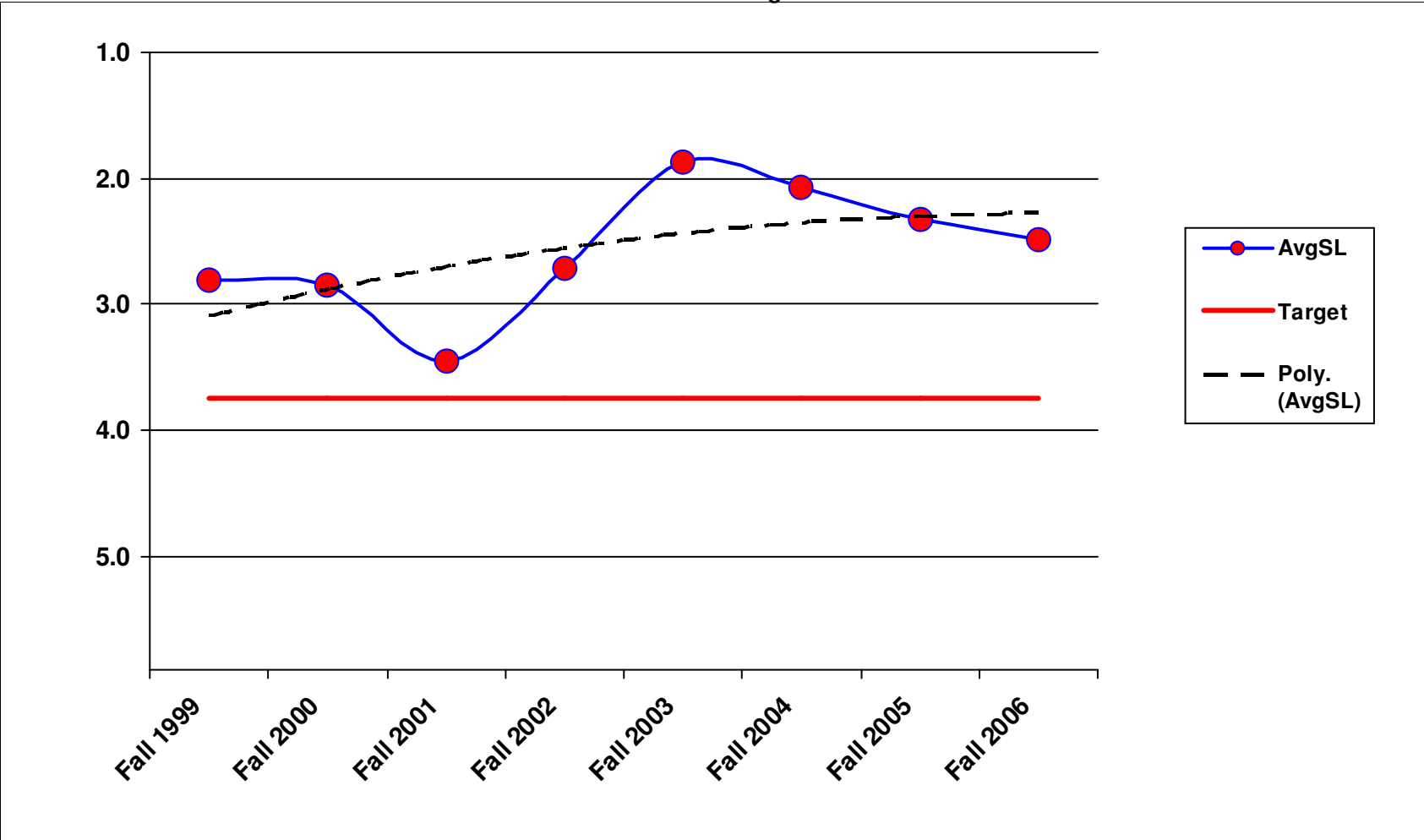


4A2 - Structural Bridge Repair Northwest Region

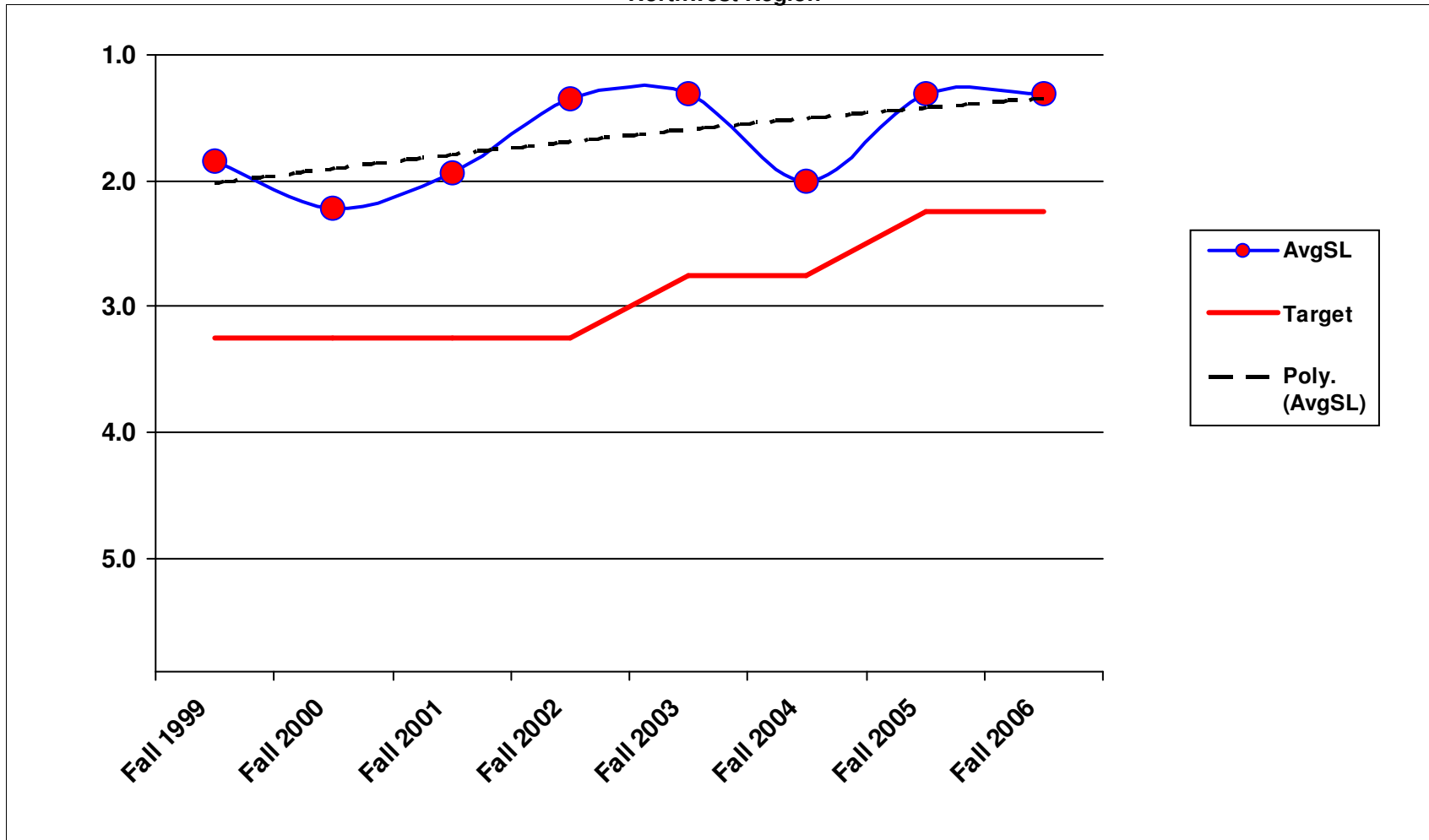


1/23/2007

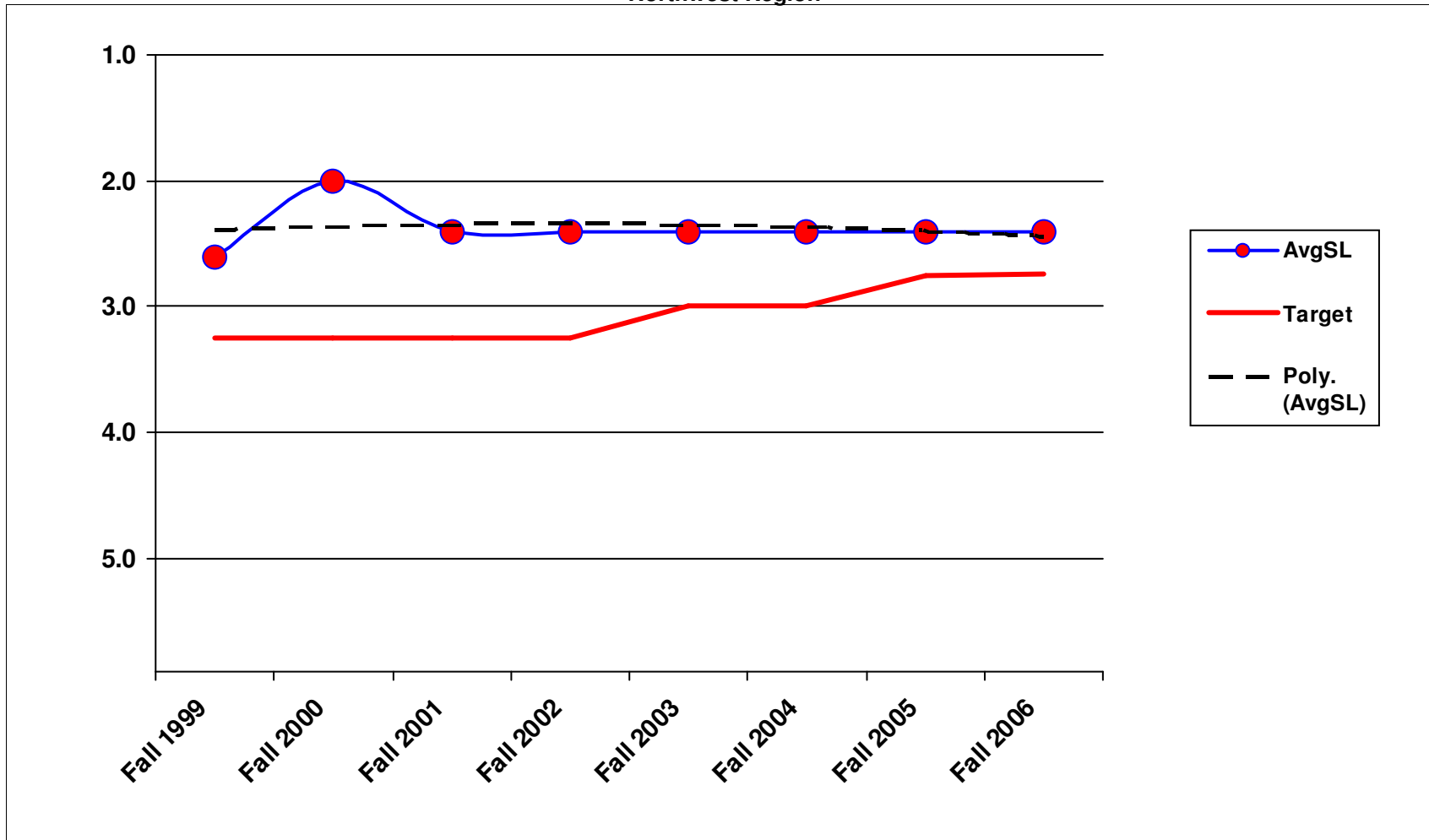
4A3 - Bridge Cleaning
Northwest Region



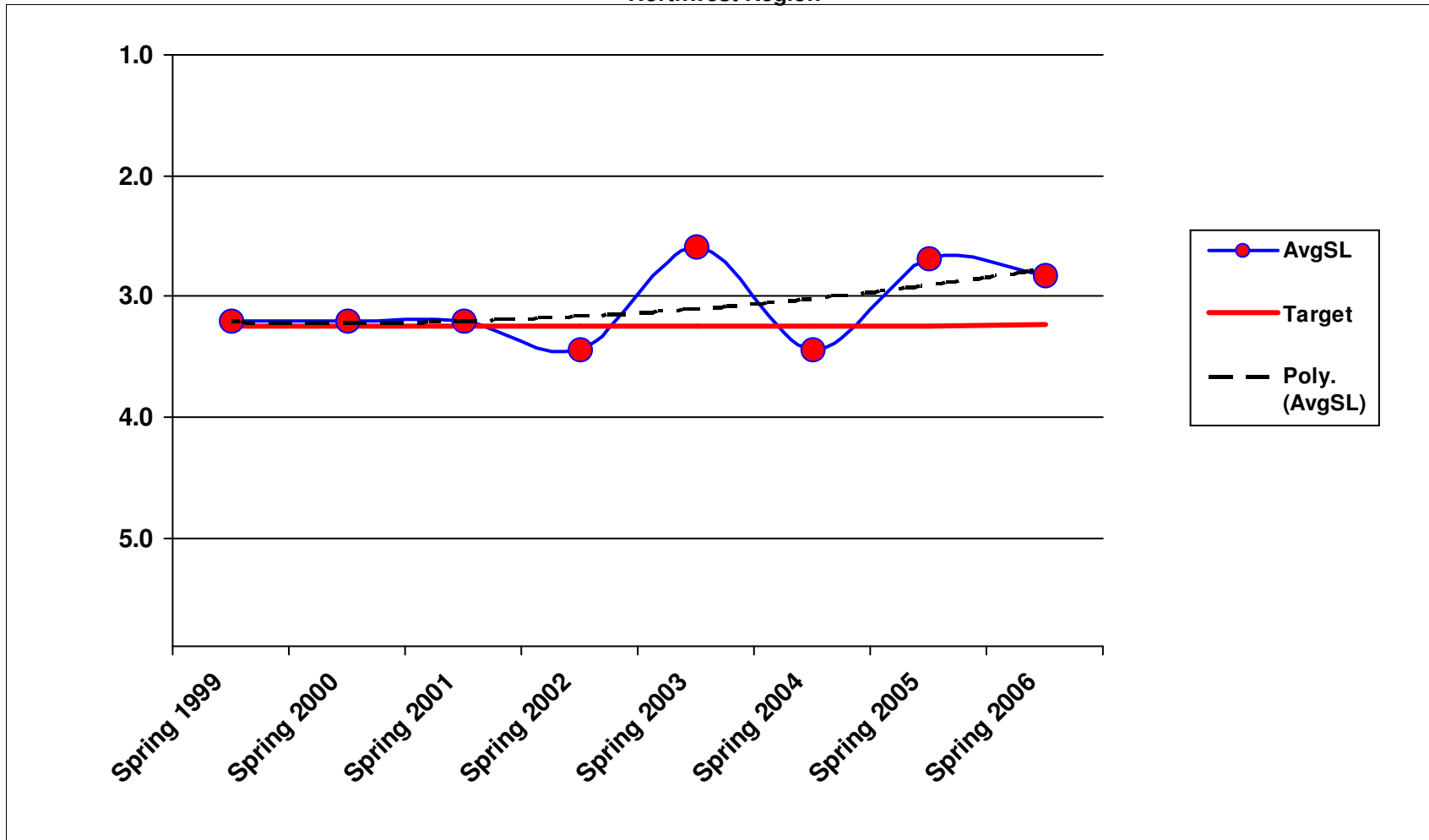
4B1 - Movable and Floating Bridge Operations Northwest Region



4B3 - Urban Tunnel Systems Northwest Region

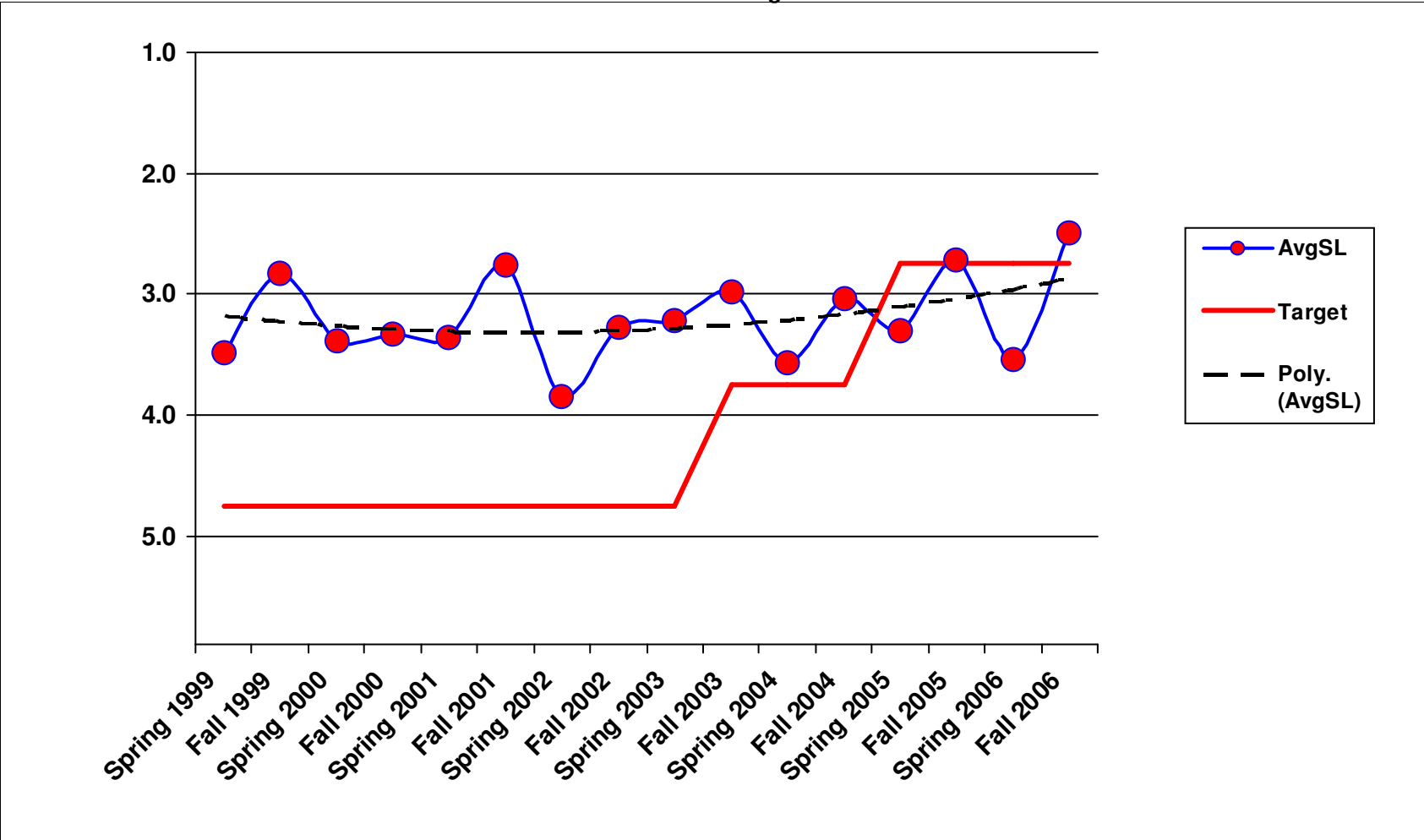


5B1 - Snow and Ice Control Operations Northwest Region

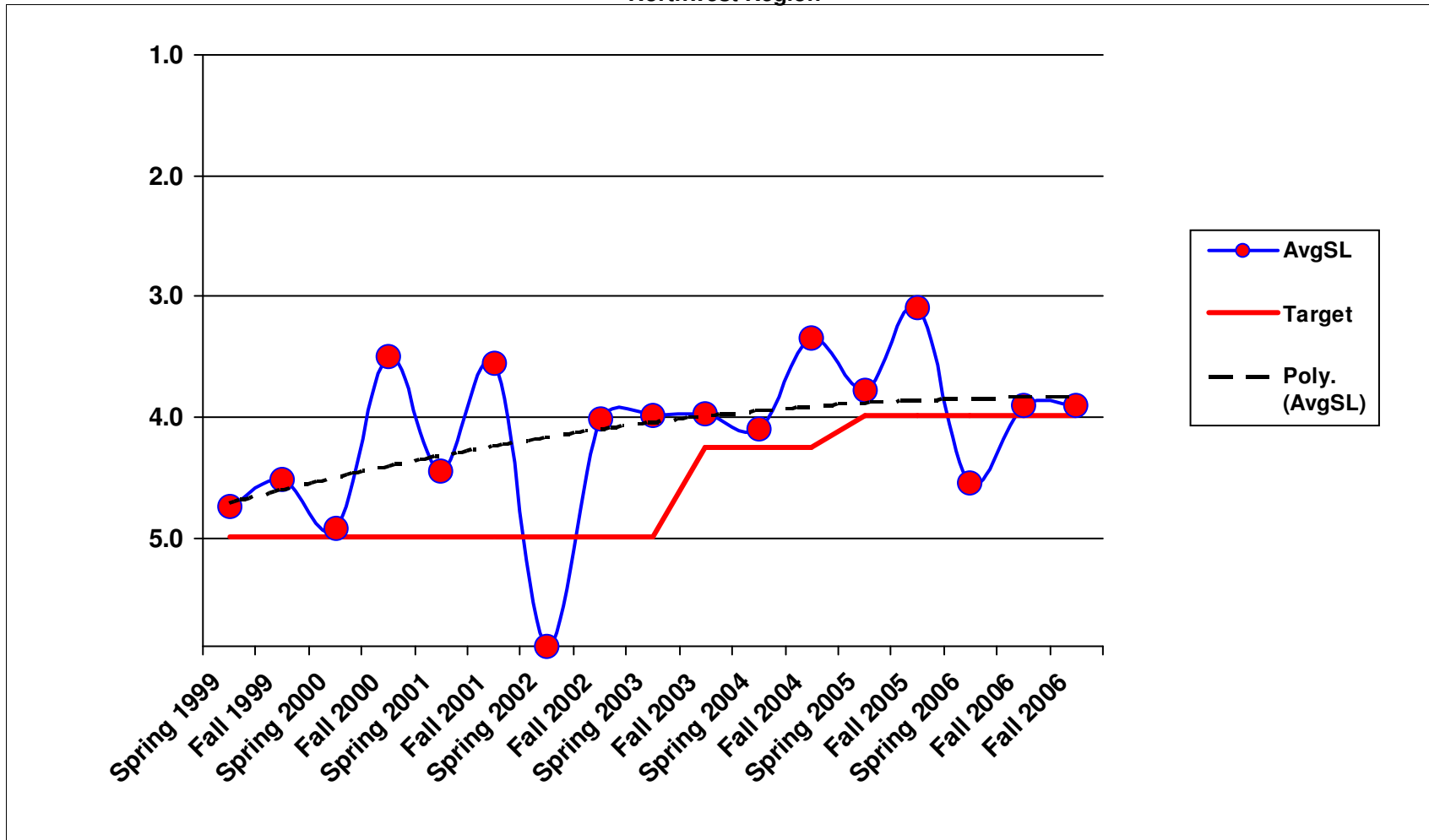


6A2 - Raised/Depressed Pavement Marker Maintenance

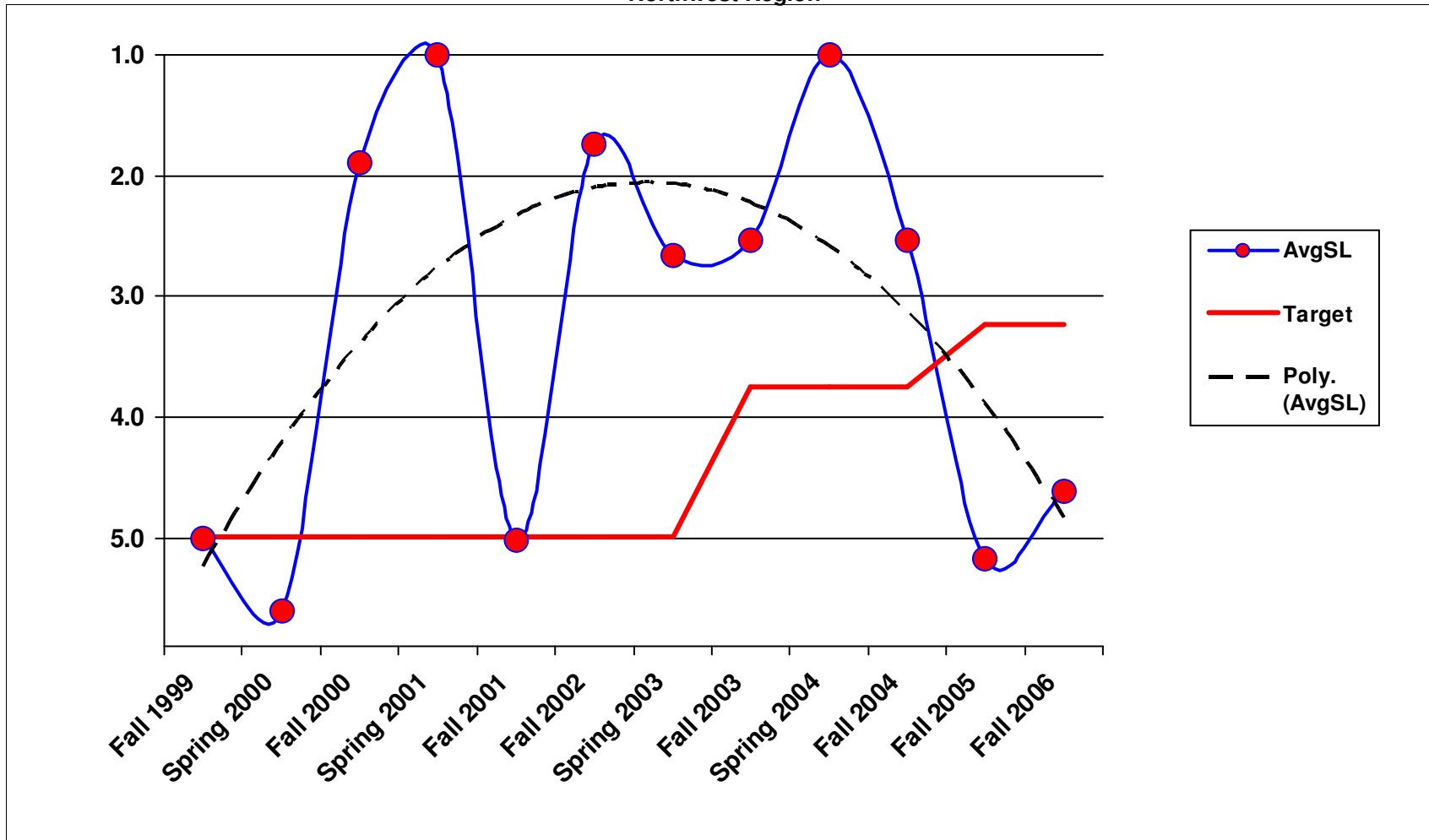
Northwest Region



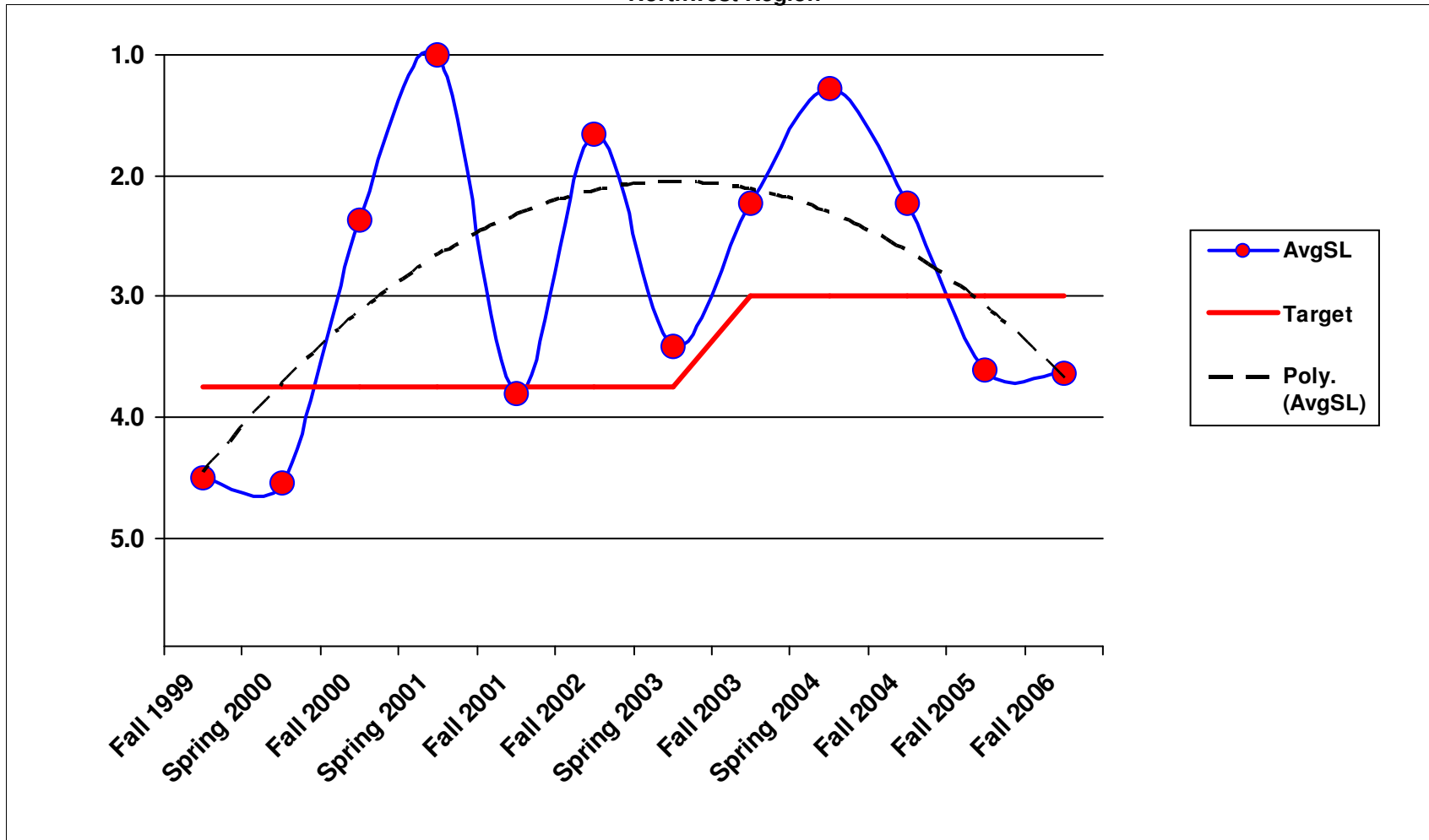
6A3 - Pavement Marking Maintenance Northwest Region



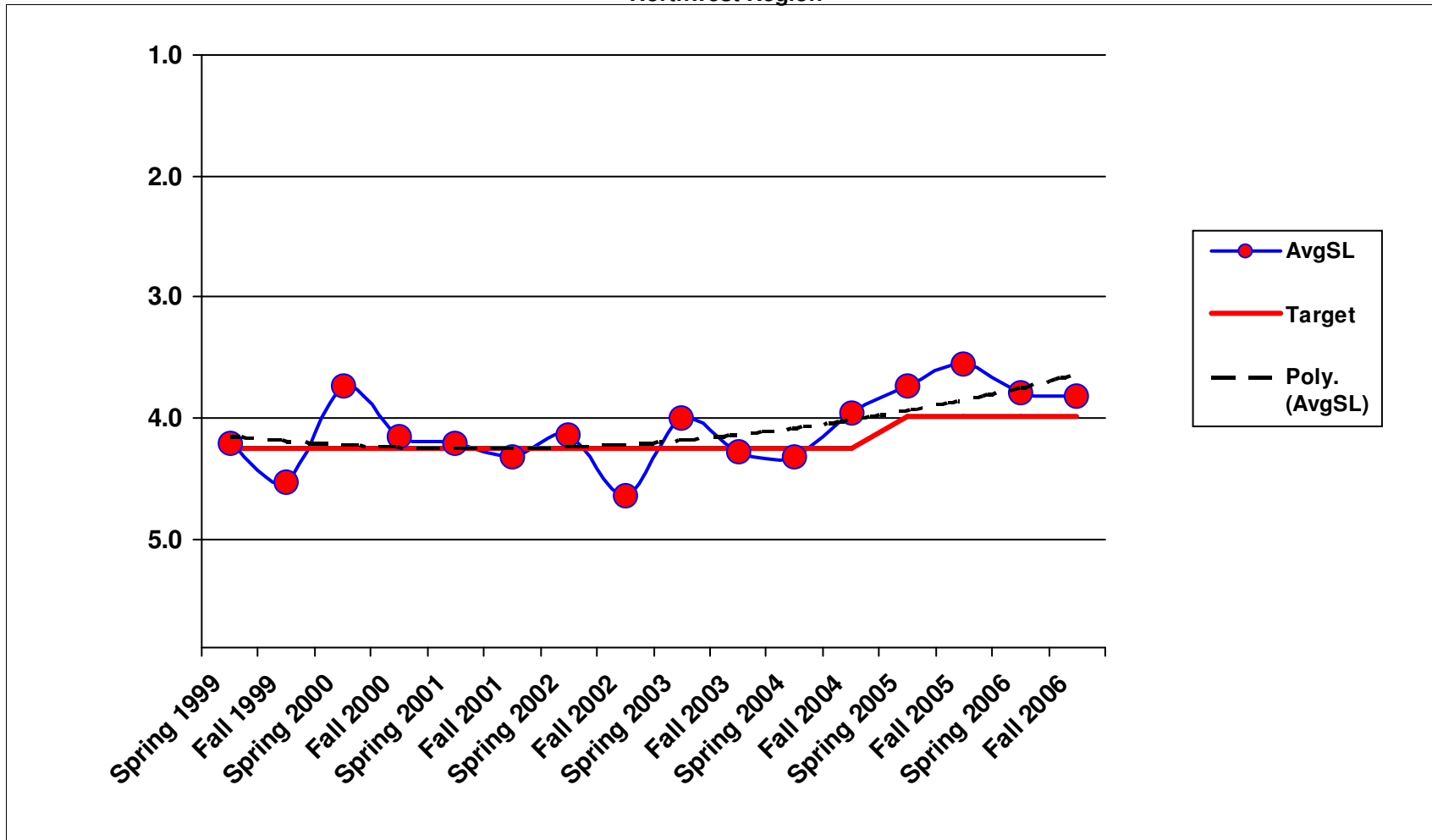
6A4 - Regulatory Sign Maintenance Northwest Region



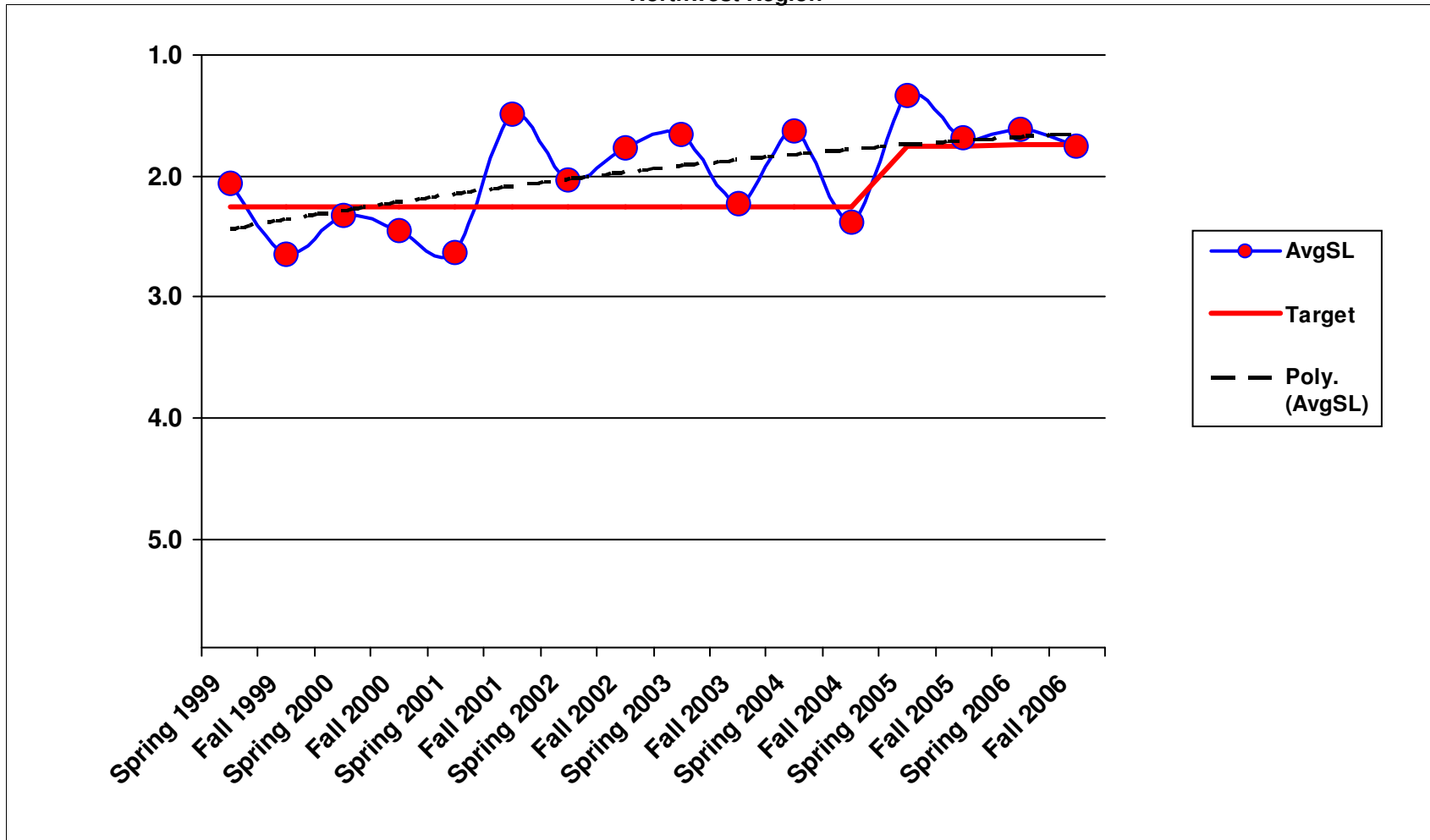
6A5 - Guide Sign Maintenance Northwest Region



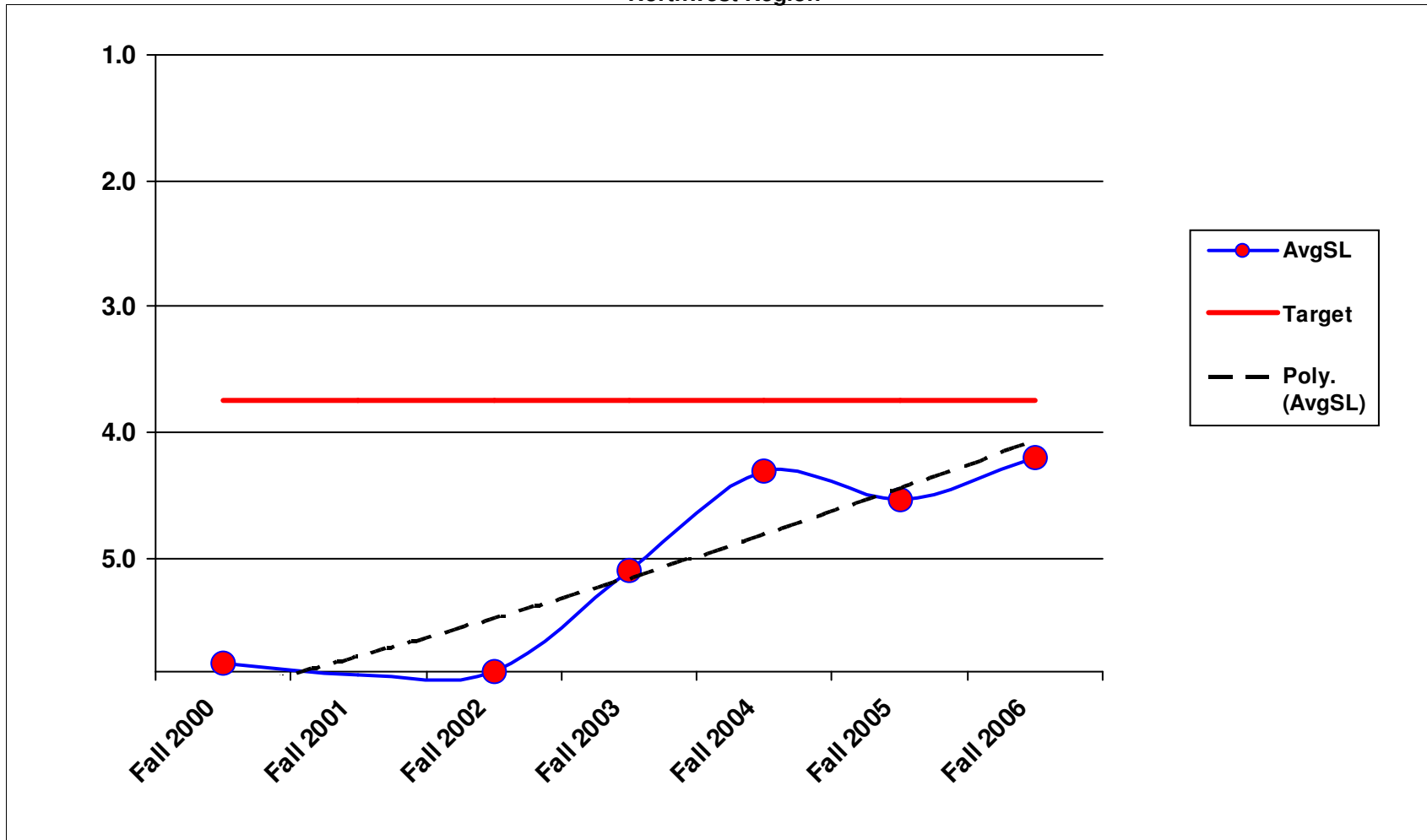
6A6 - Guidepost Maintenance Northwest Region



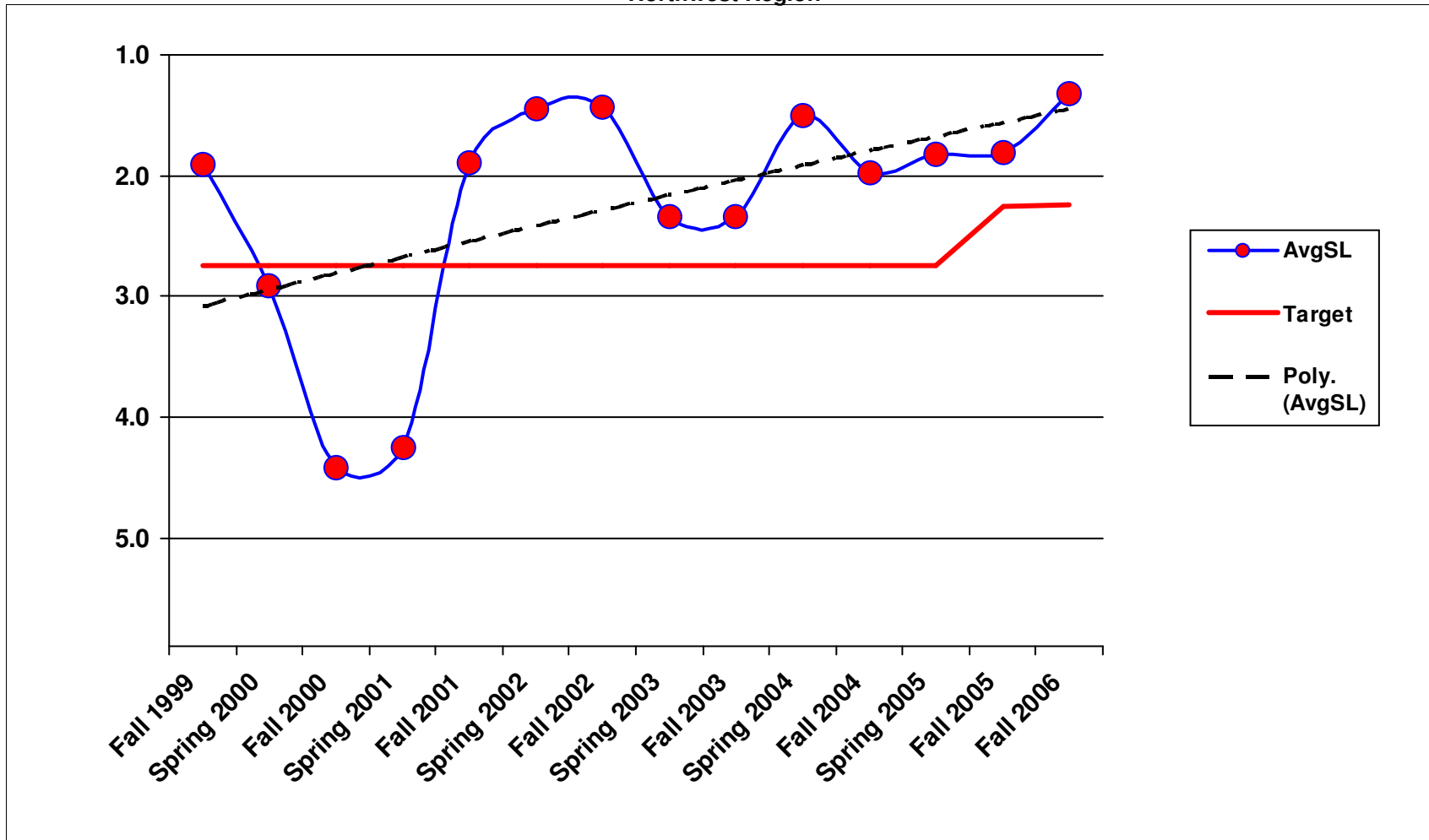
6A7 - Guardrail Maintenance Northwest Region



6B1 - Traffic Signal Systems Northwest Region

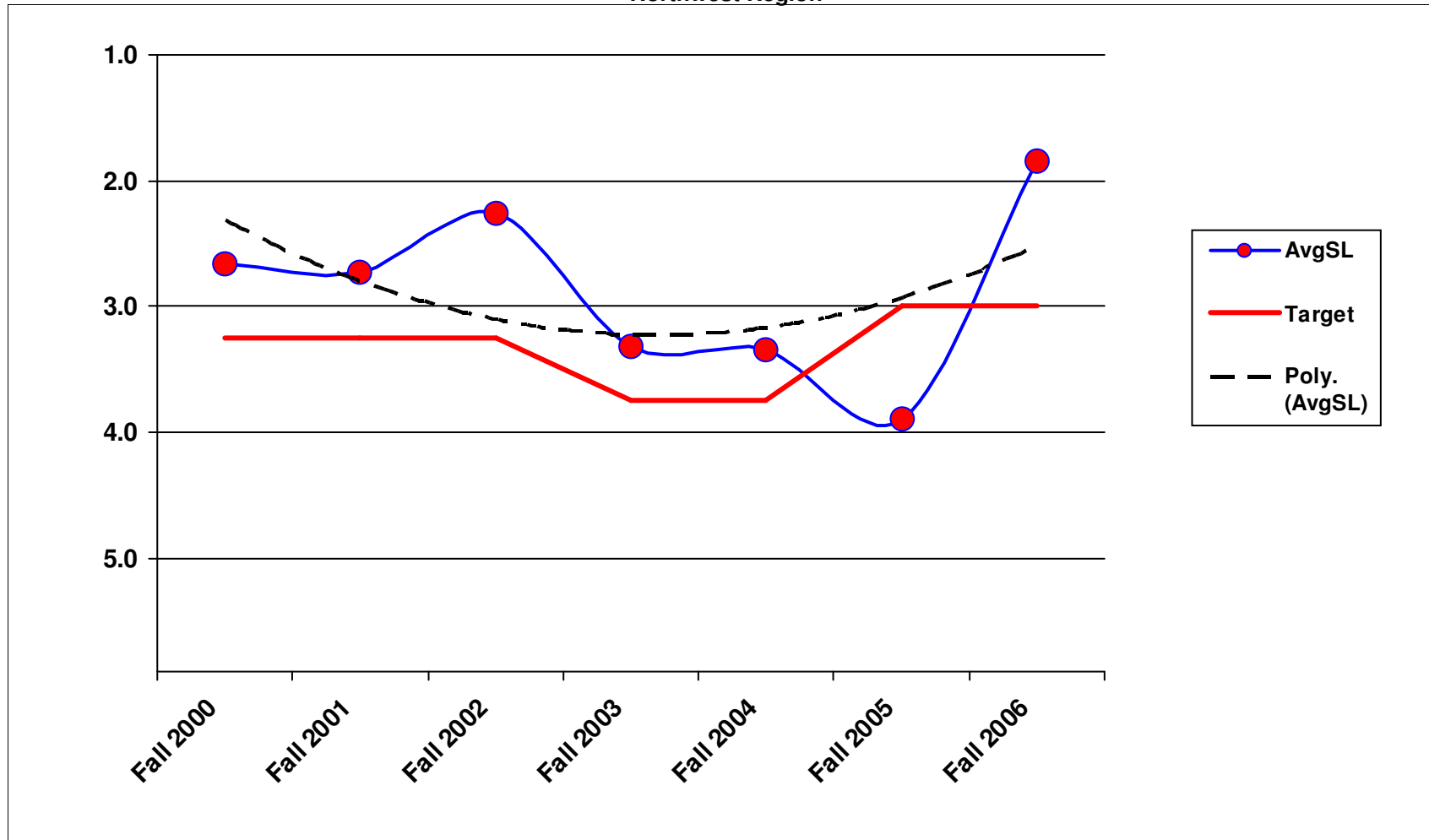


6B2 - Highway Lighting Systems Northwest Region

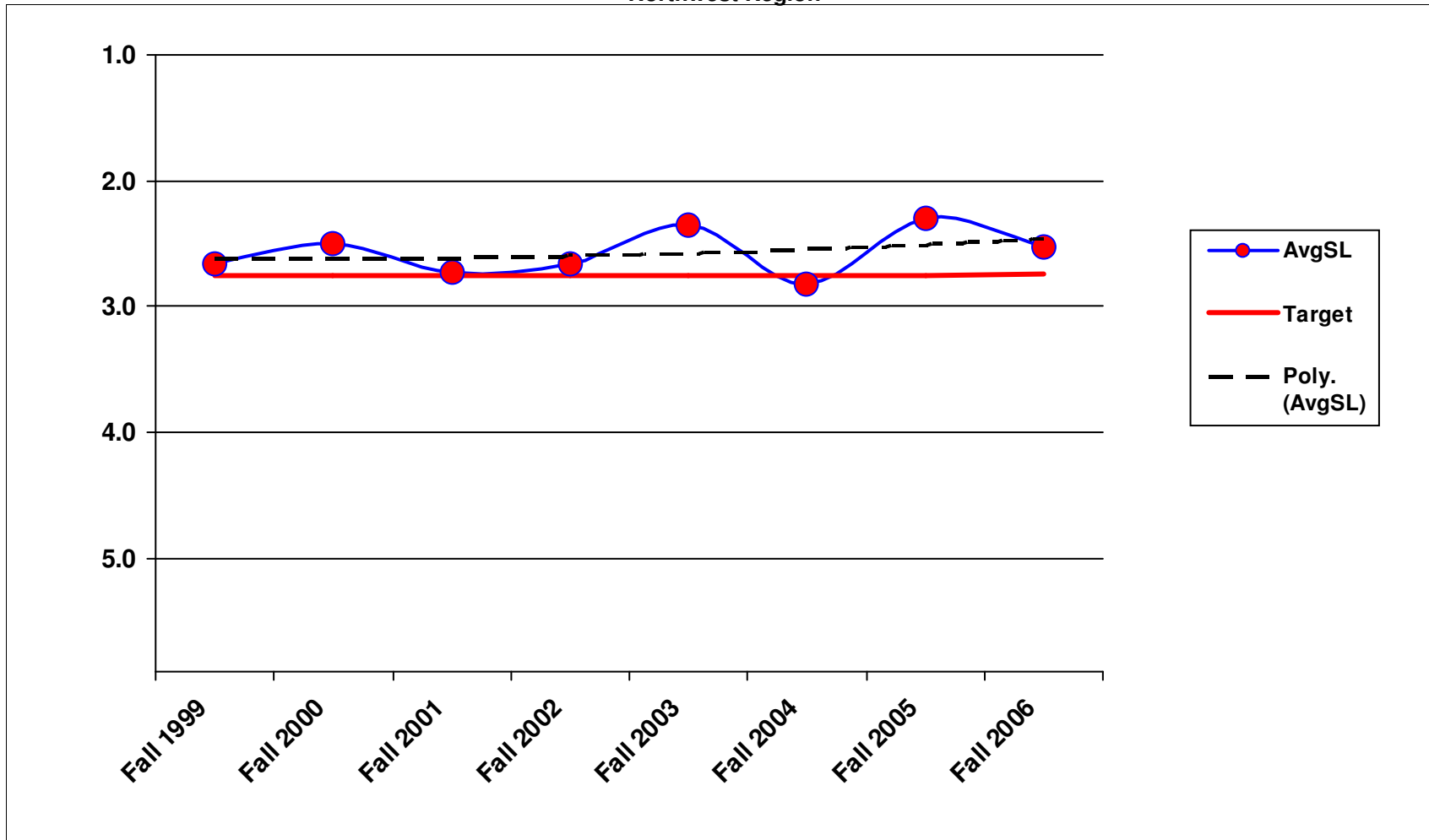


1/25/2007

6B3 - Intelligent Transportaion Systems Northwest Region



7B1 - Rest Area Operations Northwest Region



1/23/2007