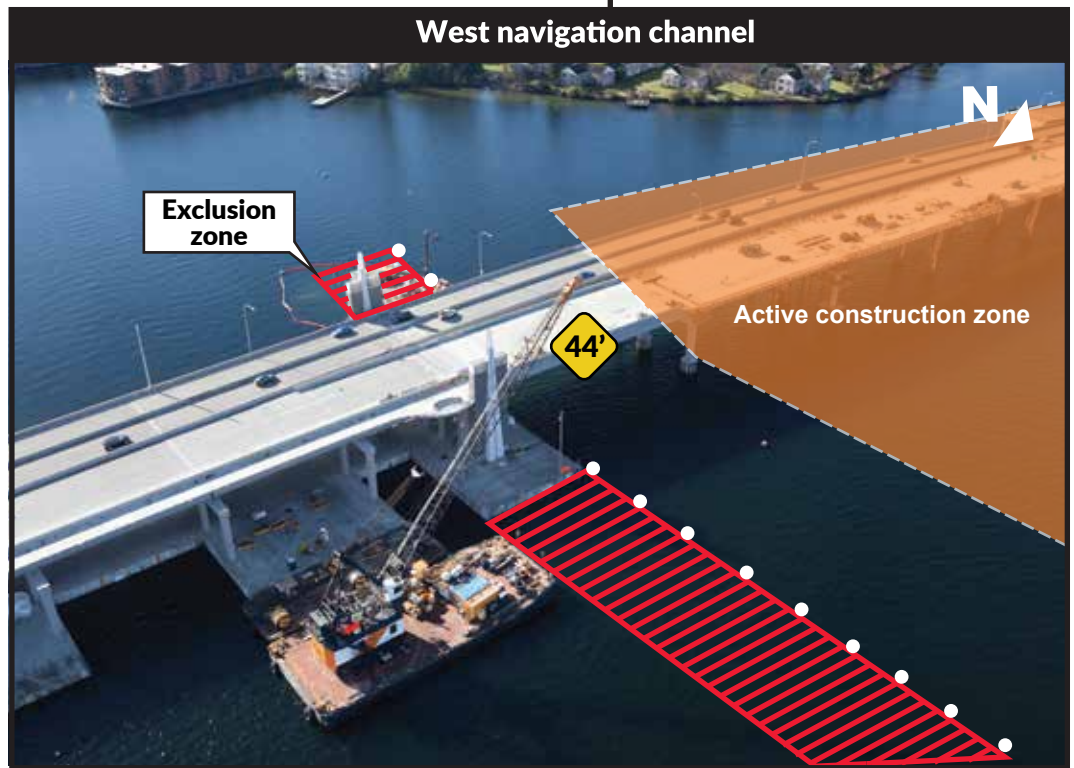


SR 520 BRIDGE REPLACEMENT AND HOV PROGRAM



Kayak/canoe route around SR 520 construction activities

Caution: Stay 150 feet away from construction activities



This document is for illustration purposes only and is not intended for navigational use.

For more information:

Phone: 206-708-4657 (24-hour construction hotline)

Email: SR520Bridge@wsdot.wa.gov

Web: www.wsdot.wa.gov/projects/SR520Bridge/BridgeAndLandings/DrawspanInfo.htm