

I-90 Floating Bridge repair - Bicycle and pedestrian access



2009: Plan ahead – www.wsdot.wa.gov/construction/2009



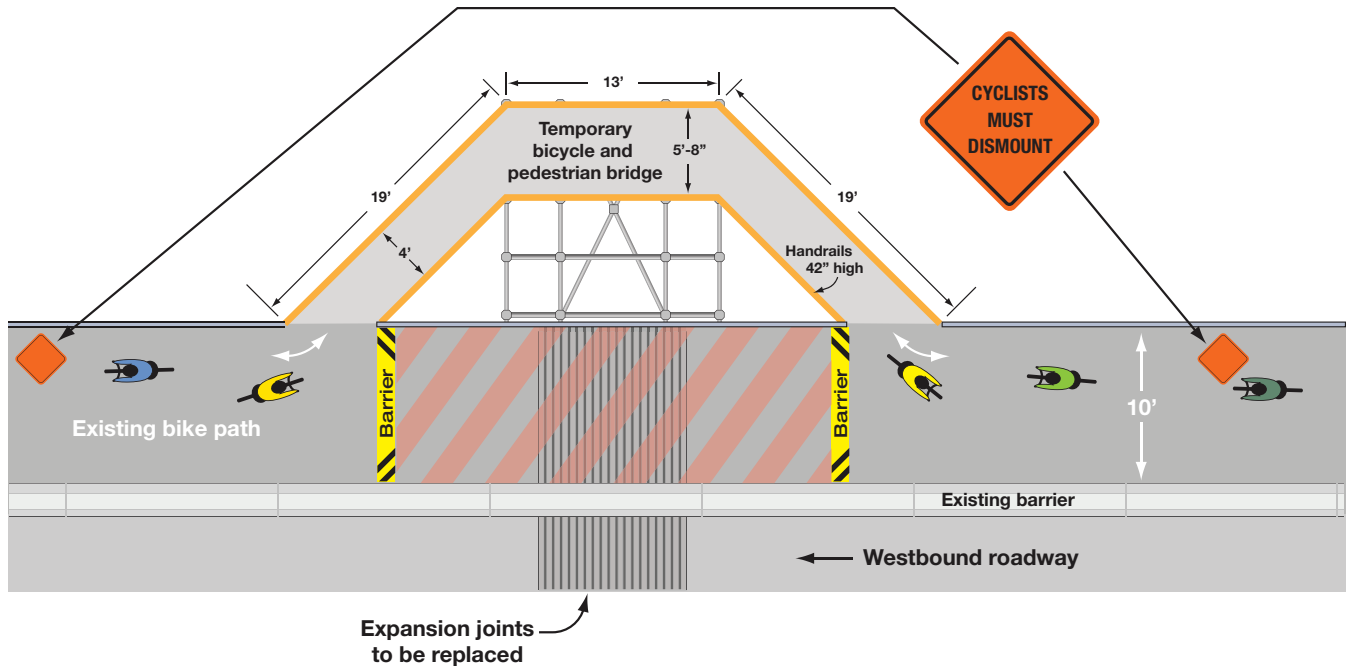
Bicyclists and pedestrians use a 10-foot-wide path on I-90 to cross Lake Washington.

Keeping bikes and pedestrians moving during I-90 closures

Bicyclists and pedestrians depend on the I-90 floating bridge to get across Lake Washington. Keeping the bike trail open is one of WSDOT's top priorities, even as we begin important safety improvements to the bridge.

In May and July, WSDOT will be replacing expansion joints on the I-90 Homer Hadley Bridge, which carries the bike path, westbound mainline and the express lanes. These joints are aging and cracking. If not replaced, bridge engineers are concerned the joints could pop up into traffic.

During the July closure, WSDOT will be providing two temporary bridges, one at each end of the floating bridge, to maintain access for bicyclists and pedestrians. The May closure will not affect the bike path.



Contact:

Mike Murphy,
WSDOT Communications
murphym@wsdot.wa.gov
206-440-4699

Project Web Page:

www.wsdot.wa.gov
and search
"Homer Hadley"

Round the clock closures

MAY 2009						
Su	M	T	W	Th	F	S
	3	4	5		1	2
10	11	12	13	14	15	16
17	18	19	20	21	22	23
24	25	26	27	28	29	30
31						

MAY 2009

I-90 express lanes closed around the clock May 4 - 23

>> ALL WESTBOUND TRAFFIC WILL USE THE MAINLINE.

JULY 2009						
Su	M	T	W	Th	F	S
			1	2	3	4
5	6	7	8	9	10	11
12	13	14	15	16	17	18
19	20	21	22	23	24	25
26	27	28	29	30	31	

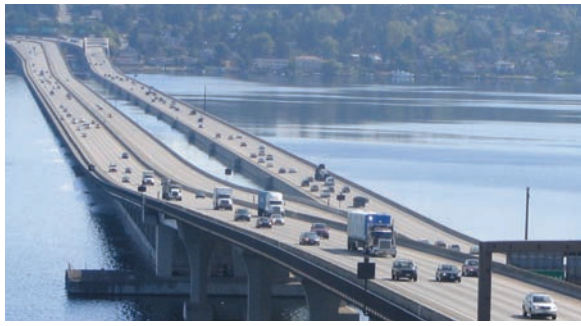
JULY 2009

Westbound I-90 across the floating bridge closed around the clock July 5 - 28

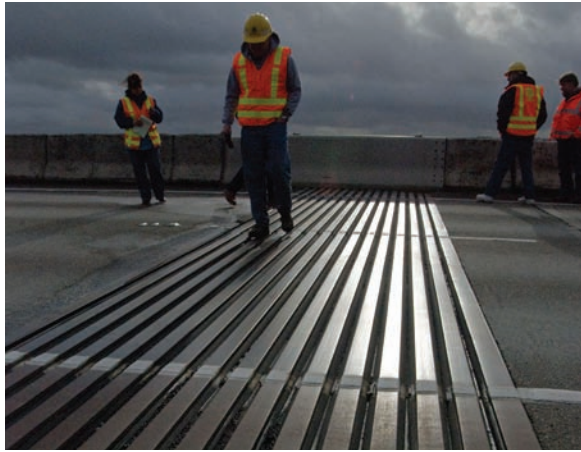
>> ALL WESTBOUND TRAFFIC WILL USE THE EXPRESS LANES.

Bicyclists and pedestrians will use the temporary bridges.

KNOW BEFORE YOU GO



Hundreds of cyclists use the bridge daily.



Expansion joints allow the bridge to bend and flex with heavy traffic, changing temperatures, wind and waves.



The joints are continuing to crack and deteriorate, requiring constant maintenance.

Common Questions

Why are you building temporary bridges?

We recognize the importance of the bike path to commuters, recreational cyclists and people training for the Seattle to Portland Bicycle Classic. We are expecting unprecedented congestion on I-90 during July unless drivers choose other ways to get across the lake. Keeping the bike path open gives drivers the option of bicycle commuting during the warm July weather.

When will the existing path be closed?

Portions of the existing path will be closed from July 5 – 28, 2009. Bicyclists will instead use two temporary bridges to get around the work zone.

Why can't the existing path remain open?

The expansion joints span the entire width of the roadway, including the bicycle and pedestrian path. A large gap will be left when the old joints are removed.

Can I ride my bicycle across the temporary bridge?

For safety reasons, signs will be posted at either end of the temporary bridge instructing bicyclists to dismount before crossing. The narrow pathway has tight corners and is not safe to ride through.

What will the deck surface of the temporary bridge be made of?

The deck will be made of plywood or similar material with a non-skid surface.

Will the temporary bridge ever be closed?

Yes. The temporary bridges will be closed once during construction for eight to 10 hours while a crane lowers the new expansion joints into place. Our goal is to do this work when the path is least likely to be used by bicyclists. Advance warning will be given through news media, roadside signs, and Web site notices by WSDOT, Cascade Bicycle Club and the Bicycle Alliance of Washington.

During the few hours that the temporary bridges are closed, bicyclists can cross the lake using public buses equipped with bike racks.

How safe will the temporary bridges be?

The bridges will be securely attached to the side of the floating bridge with aluminum scaffolding. Bridge safety inspectors will ensure the temporary structures are strong enough to carry people and resist wind. The bridges will be the same elevation as the existing bike path and will have a 42-inch-high handrail.

What are you doing to warn bicyclists about the project?

We are working closely with the Cascade Bicycle Club and the Bicycle Alliance of Washington to get the word out. Keep checking their Web sites and publications for the latest information, or go to www.wsdot.wa.gov and search for "Homer Hadley."

Dates to remember

- May 1 – 31:** Group Health Commute Challenge
- May 15:** Starbucks Bike to Work Day
- June 13:** Flying Wheels Summer Century
- July 5 – 28:** Closure of the westbound I-90 mainline (cyclists will use two temporary bridges)
- July 11 – 12:** Seattle to Portland Bicycle Classic

March 2009

KNOW BEFORE YOU GO

Americans with Disabilities Act (ADA) Information: Materials can be provided in alternative formats: large print, Braille, cassette tape, or on computer disk for people with disabilities by calling the Office of Equal Opportunity (OEO) at (360) 705-7097. Persons who are deaf or hard of hearing may contact OEO through the Washington Relay Service at 7-1-1.

Title VI Statement to Public: WSDOT ensures full compliance with Title VI of the Civil Rights Act of 1964 by prohibiting discrimination against any person on the basis of race, color, national origin or sex in the provision of benefits and services resulting from its federally assisted programs and activities. For questions regarding WSDOT's Title VI Program, you may contact the Department's Title VI Coordinator at (360) 705-7098 or (509) 324-6018.