

Maintenance Accountability Process

Activity Service Level Targets and Service Levels Delivered

North Central Region - CY 2006

Activity	1.0		1.9		2.0		2.9		3.0		3.9		4.0		4.9		5.0		5.9	
	+	A	-		+	B	-		+	C	-		+	D	-		+	F	-	
Group - 1 Roadway Maintenance and Operations																				
1A1 Pavement Patching & Repair*					⊙	✓														
1A2 Crack Sealing*											✓	⊙								
1A3 Shoulder Maintenance							✓		⊙											
1A4 Sweeping and Cleaning		✓			⊙															
1B1 Safety Patrol									⊙					✓						
Group - 2 Drainage Maintenance and Slope Repair																				
2A1 Maintain Ditches		✓				⊙														
2A2 Maintain Culverts										✓	⊙									
2A3 Maintain Catch Basins and Inlets						✓	⊙													
2A4 Maintain Detention/Retention Basins										✓	⊙									
2A5 Slope Repair	✓					⊙														
Group - 3 Roadside and Vegetation Management																				
3A1 Litter Pickup										✓					⊙					
3A2 Noxious Weed Control	✓					⊙														
3A3 Nuisance Vegetation Control	✓						⊙													
3A4 Control of Vegetation Obstructions		✓					⊙													
Group - 4 Bridge and Urban Tunnel Maintenance and Operations																				
4A1 Bridge Deck Repair		✓					⊙													
4A2 Structural Bridge Repair			✓							⊙										
4A3 Bridge Cleaning			✓							⊙										
Group - 5 Snow and Ice Control Operations																				
5B1 Snow and Ice Control Operations			✓						⊙											
Group - 6 Traffic Control Maintenance and Operations																				
6A1 Pavement Striping Maintenance***							✓		⊙											
6A2 Raised/Depressed Pavement Marker Maint.		✓				⊙														
6A3 Pavement Marking Maintenance							✓				⊙									
6A4 Regulatory Sign Maintenance		✓							⊙											
6A5 Guide Sign Maintenance	✓						⊙													
6A6 Guidepost Maintenance										✓	⊙									
6A7 Guardrail Maintenance		✓	⊙																	
6B1 Traffic Signal Systems									⊙		✓									
6B2 Highway Lighting Systems		✓			⊙															
6B3 Intelligent Transportation Systems							⊙	✓												
Group - 7 Rest Area Operations																				
7B1 Rest Area Operations						⊙	✓													

*Data collected from WSPMS

*** Revised Performance measure with revised target

Key

⊙ Current Law Budget Service Level Commitment



Service Level Currently Delivered by WSDOT

Maintenance Accountability Process
Activity Service Level Targets and Service Levels Delivered
North Central Area 1 - CY 2006

Activity	1.0		1.9		2.0		2.9		3.0		3.9		4.0		4.9		5.0		5.9	
	+	A	-		+	B	-		+	C	-		+	D	-		+	F	-	
Group - 1 Roadway Maintenance and Operations																				
1A1 Pavement Patching & Repair*		✓		⊙																
1A2 Crack Sealing*							✓				⊙									
1A3 Shoulder Maintenance			✓						⊙											
1A4 Sweeping and Cleaning		✓		⊙																
1B1 Safety Patrol						✓			⊙											
Group - 2 Drainage Maintenance and Slope Repair																				
2A1 Maintain Ditches	✓					⊙														
2A2 Maintain Culverts						✓				⊙										
2A3 Maintain Catch Basins and Inlets						⊙	✓													
2A5 Slope Repair	✓					⊙														
Group - 3 Roadside and Vegetation Management																				
3A1 Litter Pickup										✓				⊙						
3A2 Noxious Weed Control	✓					⊙														
3A3 Nuisance Vegetation Control	✓						⊙													
3A4 Control of Vegetation Obstructions	✓						⊙													
Group - 4 Bridge and Urban Tunnel Maintenance and Operations																				
4A1 Bridge Deck Repair	✓						⊙													
4A3 Bridge Cleaning			✓							⊙										
Group - 5 Snow and Ice Control Operations																				
5B1 Snow and Ice Control Operations		✓							⊙											
Group - 6 Traffic Control Maintenance and Operations																				
6A2 Raised/Depressed Pavement Marker Maint.		✓				⊙														
6A3 Pavement Marking Maintenance						✓					⊙									
6A6 Guidepost Maintenance						✓					⊙									
6A7 Guardrail Maintenance	✓	⊙																		

*Data collected from WSPMS

*** Revised Performance measure with revised target

Key

- ⊙ Current Law Budget Service Level Commitment
- ✓ Service Level Currently Delivered by WSDOT

Maintenance Accountability Process Activity Service Level Targets and Service Levels Delivered North Central Area 2 - CY 2006

Activity	1.0		1.9		2.0		2.9		3.0		3.9		4.0		4.9		5.0		5.9	
	+	A	-		+	B	-		+	C	-		+	D	-		+	F	-	
Group - 1 Roadway Maintenance and Operations																				
1A1 Pavement Patching & Repair*					⊙				✓											
1A2 Crack Sealing*											⊙		✓							
1A3 Shoulder Maintenance							✓		⊙											
1A4 Sweeping and Cleaning	✓				⊙															
1B1 Safety Patrol									⊙									✓		
Group - 2 Drainage Maintenance and Slope Repair																				
2A1 Maintain Ditches			✓		⊙															
2A2 Maintain Culverts									✓	⊙										
2A3 Maintain Catch Basins and Inlets			✓		⊙															
2A5 Slope Repair		✓			⊙															
Group - 3 Roadside and Vegetation Management																				
3A1 Litter Pickup									✓					⊙						
3A2 Noxious Weed Control	✓				⊙															
3A3 Nuisance Vegetation Control		✓			⊙															
3A4 Control of Vegetation Obstructions					✓		⊙													
Group - 4 Bridge and Urban Tunnel Maintenance and Operations																				
4A1 Bridge Deck Repair		✓					⊙													
4A3 Bridge Cleaning					✓					⊙										
Group - 5 Snow and Ice Control Operations																				
5B1 Snow and Ice Control Operations		✓							⊙											
Group - 6 Traffic Control Maintenance and Operations																				
6A2 Raised/Depressed Pavement Marker Maint.		✓			⊙															
6A3 Pavement Marking Maintenance									✓	⊙										
6A6 Guidepost Maintenance										⊙				✓						
6A7 Guardrail Maintenance	✓	⊙																		

*Data collected from WSPMS

*** Revised Performance measure with revised target

Key

- ⊙ Current Law Budget Service Level Commitment
- ✓ Service Level Currently Delivered by WSDOT

Maintenance Accountability Process

Activity Service Level Targets and Service Levels Delivered

North Cental Area 3 - CY 2006

Activity	1.0		1.9		2.0		2.9		3.0		3.9		4.0		4.9		5.0		5.9	
	+	A	-		+	B	-		+	C	-		+	D	-		+	F	-	
Group - 1 Roadway Maintenance and Operations																				
1A1 Pavement Patching & Repair*					✓	⊙														
1A2 Crack Sealing*											⊙		✓							
1A3 Shoulder Maintenance									⊙		✓									
1A4 Sweeping and Cleaning		✓			⊙															
1B1 Safety Patrol									⊙									✓		
Group - 2 Drainage Maintenance and Slope Repair																				
2A1 Maintain Ditches					✓	⊙														
2A2 Maintain Culverts										⊙				✓						
2A3 Maintain Catch Basins and Inlets								⊙		✓										
2A5 Slope Repair		✓			⊙															
Group - 3 Roadside and Vegetation Management																				
3A1 Litter Pickup													✓	⊙						
3A2 Noxious Weed Control	✓					⊙														
3A3 Nuisance Vegetation Control	✓						⊙													
3A4 Control of Vegetation Obstructions	✓						⊙													
Group - 4 Bridge and Urban Tunnel Maintenance and Operations																				
4A1 Bridge Deck Repair								⊙						✓						
4A3 Bridge Cleaning					✓					⊙										
Group - 5 Snow and Ice Control Operations																				
5B1 Snow and Ice Control Operations						✓		⊙												
Group - 6 Traffic Control Maintenance and Operations																				
6A2 Raised/Depressed Pavement Marker Maint.	✓					⊙														
6A3 Pavement Marking Maintenance					✓						⊙									
6A6 Guidepost Maintenance										✓		⊙								
6A7 Guardrail Maintenance		⊙	✓																	

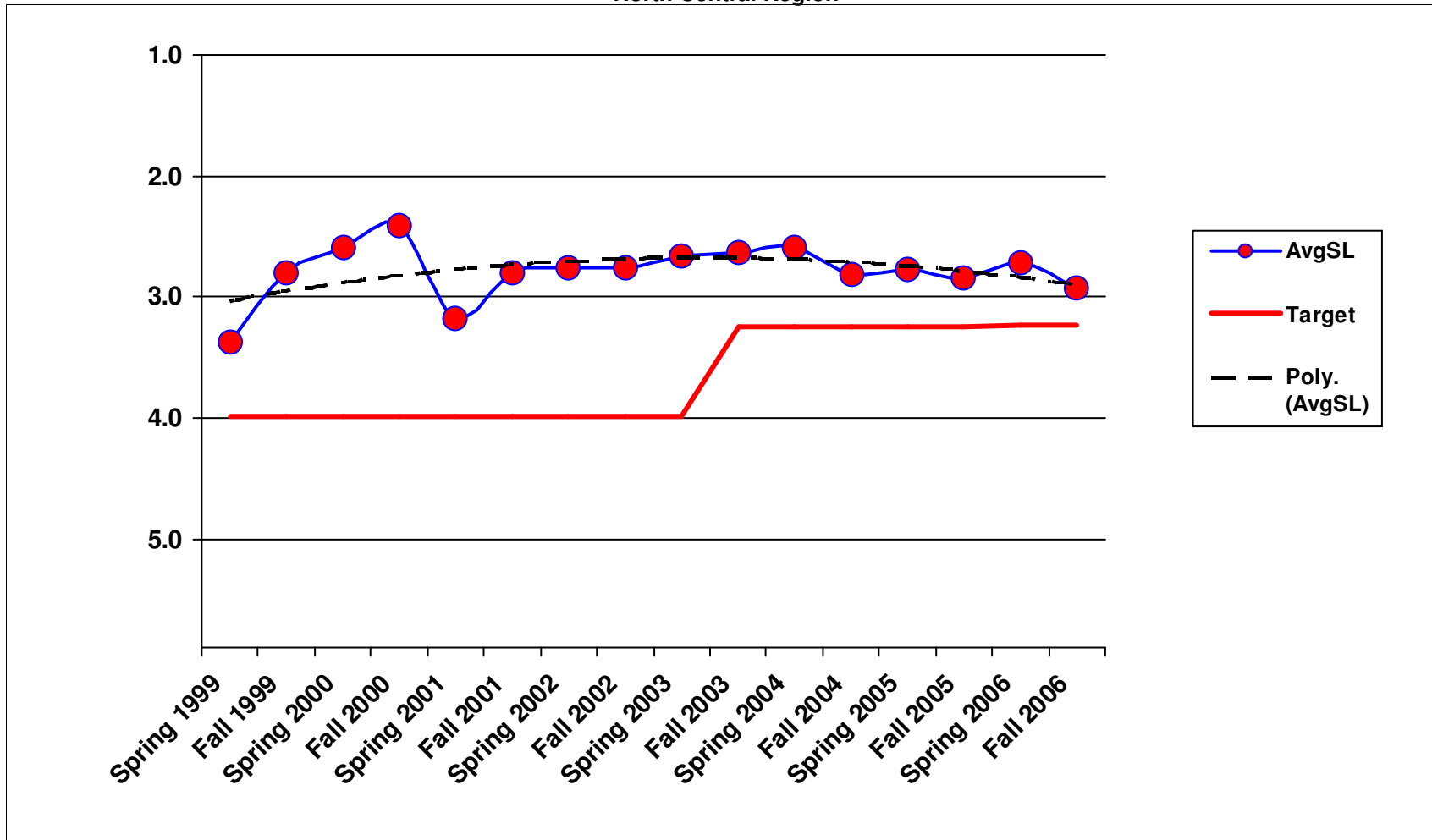
*Data collected from WSPMS

*** Revised Performance measure with revised target

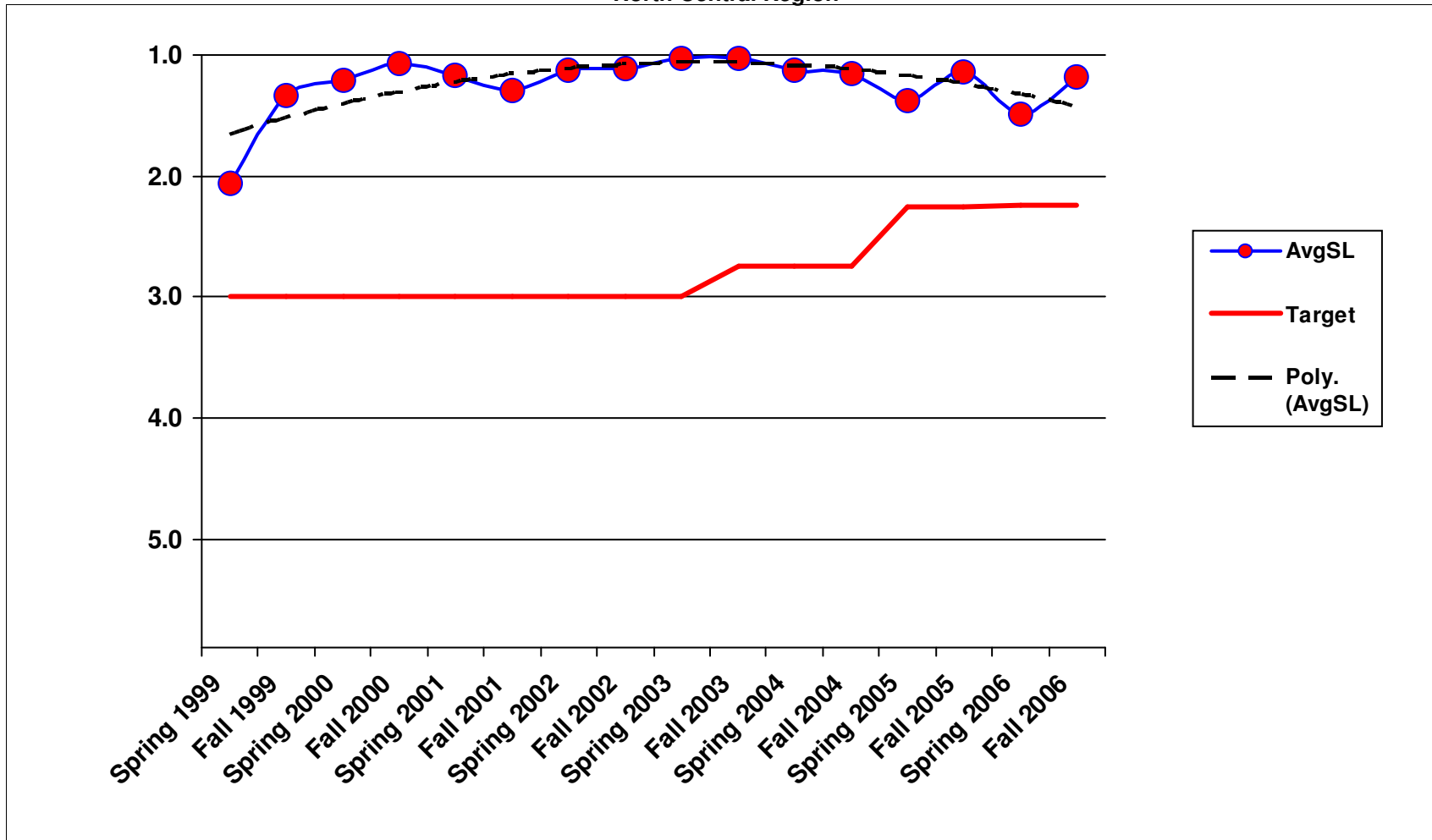
Key

- ⊙ Current Law Budget Service Level Commitment
- ✓ Service Level Currently Delivered by WSDOT

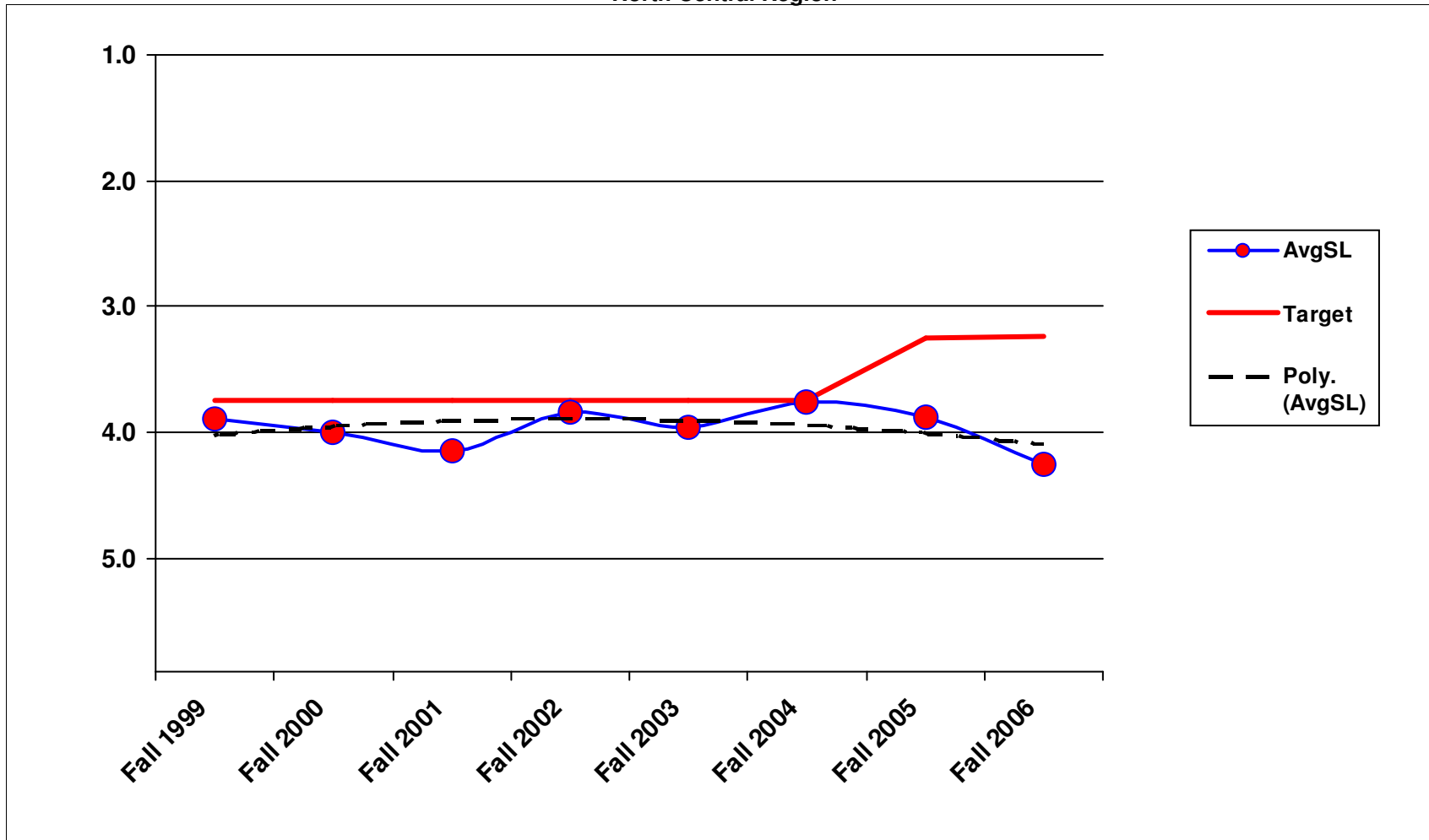
1A3 - Shoulder Maintenance North Central Region



1A4 - Sweeping and Cleaning
North Central Region

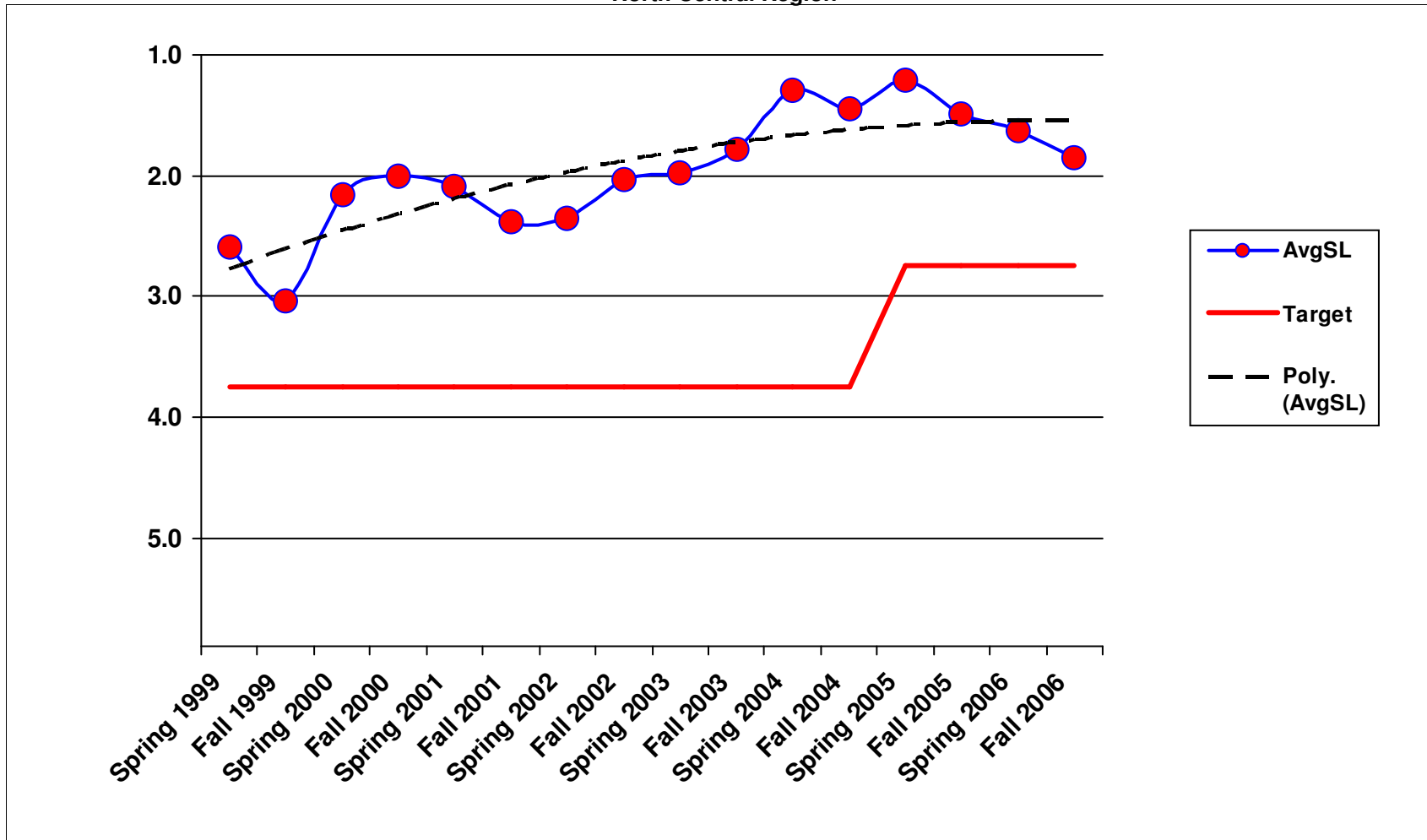


1B1 - Safety Patrol
North Central Region

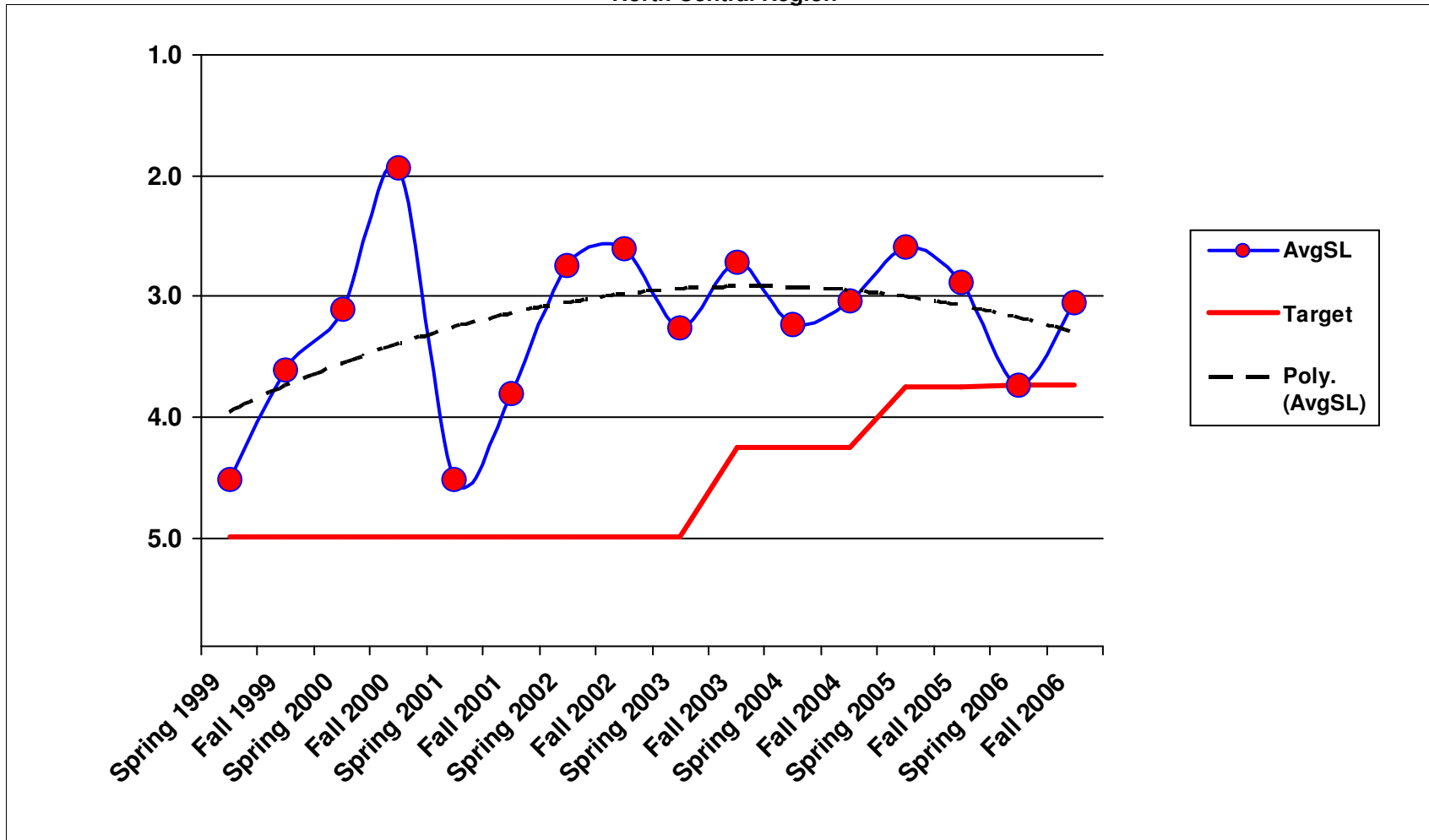


1/23/2007

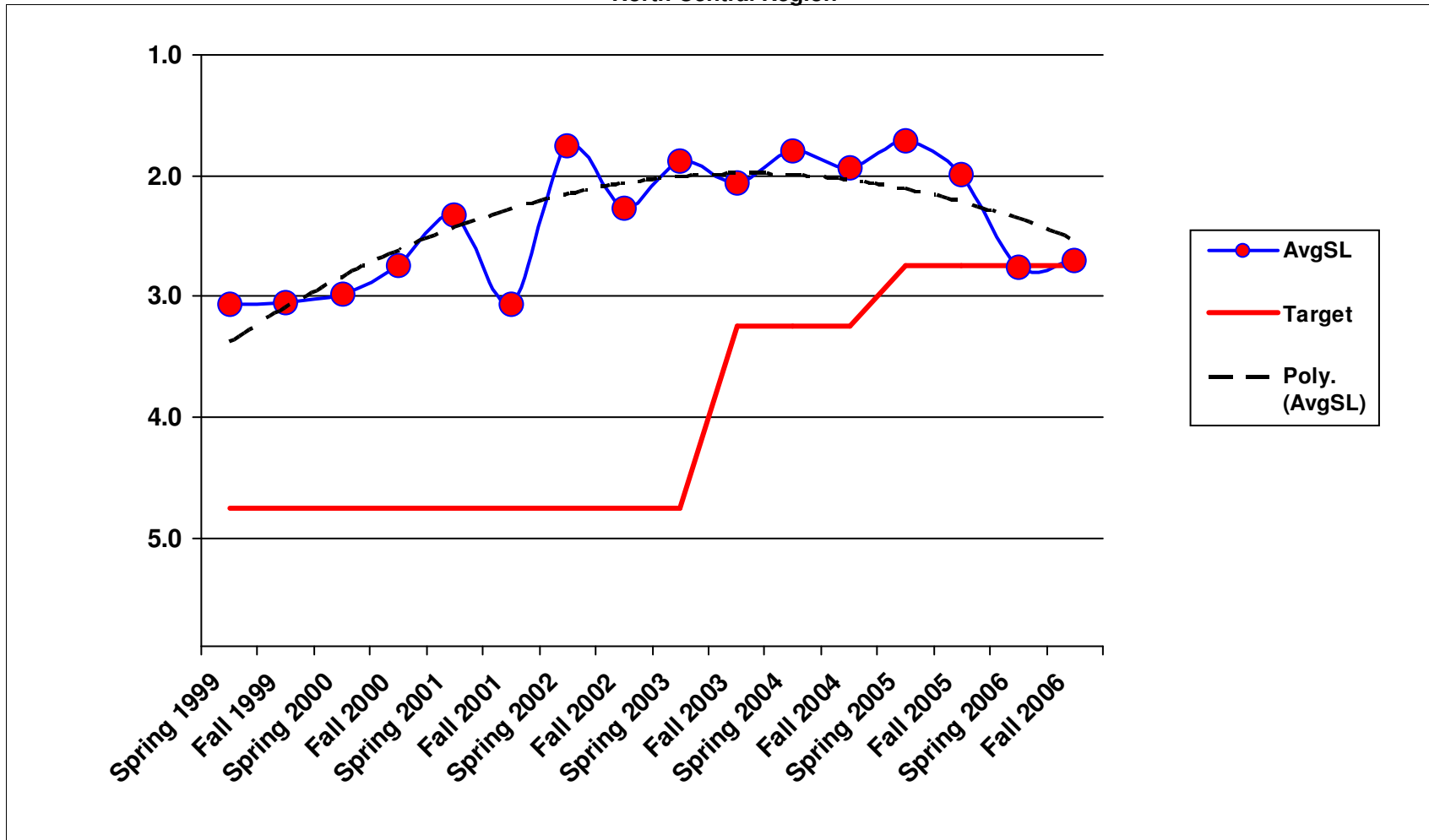
2A1 - Maintain Ditches North Central Region



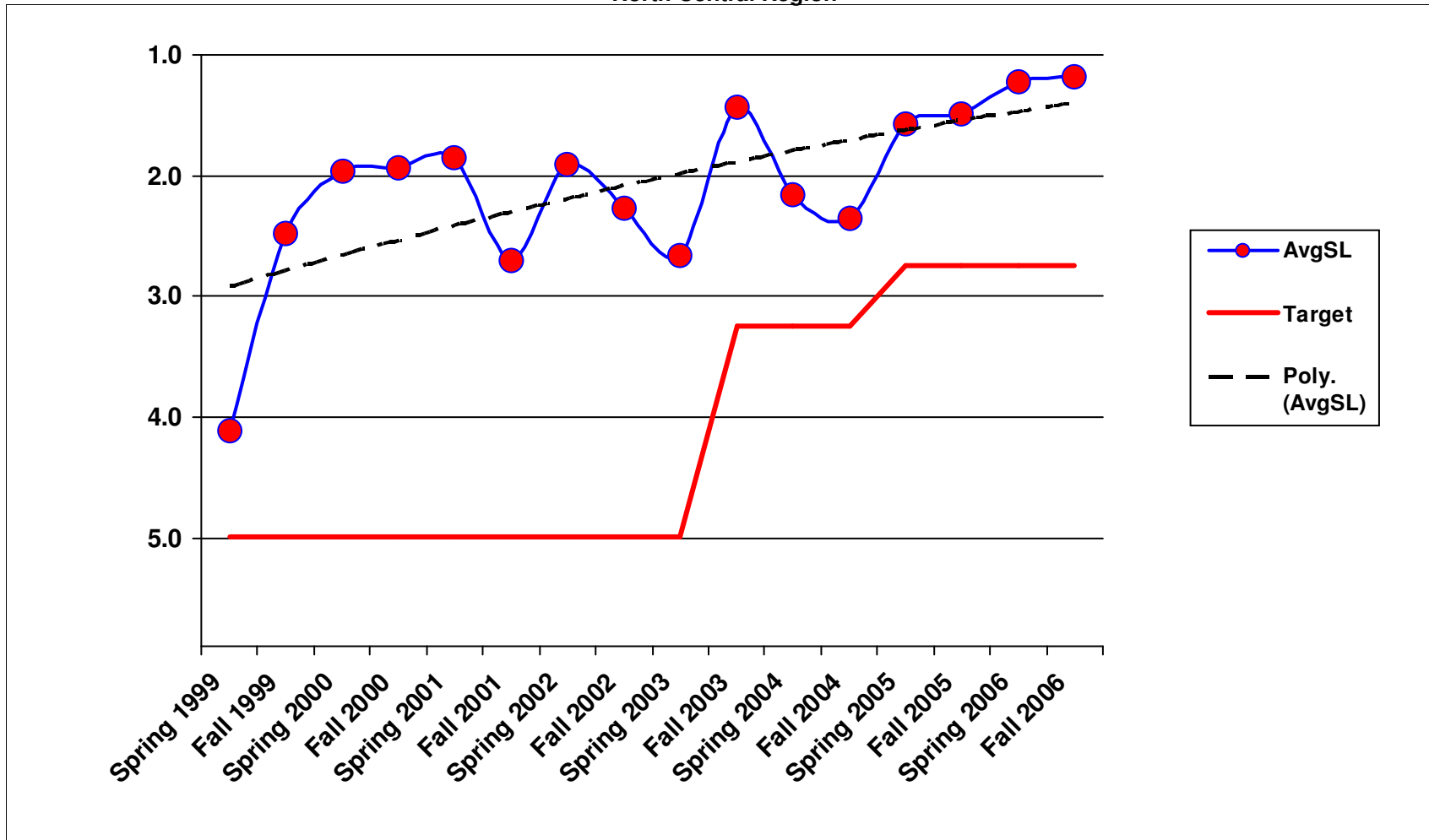
2A2 - Maintain Culverts
North Central Region



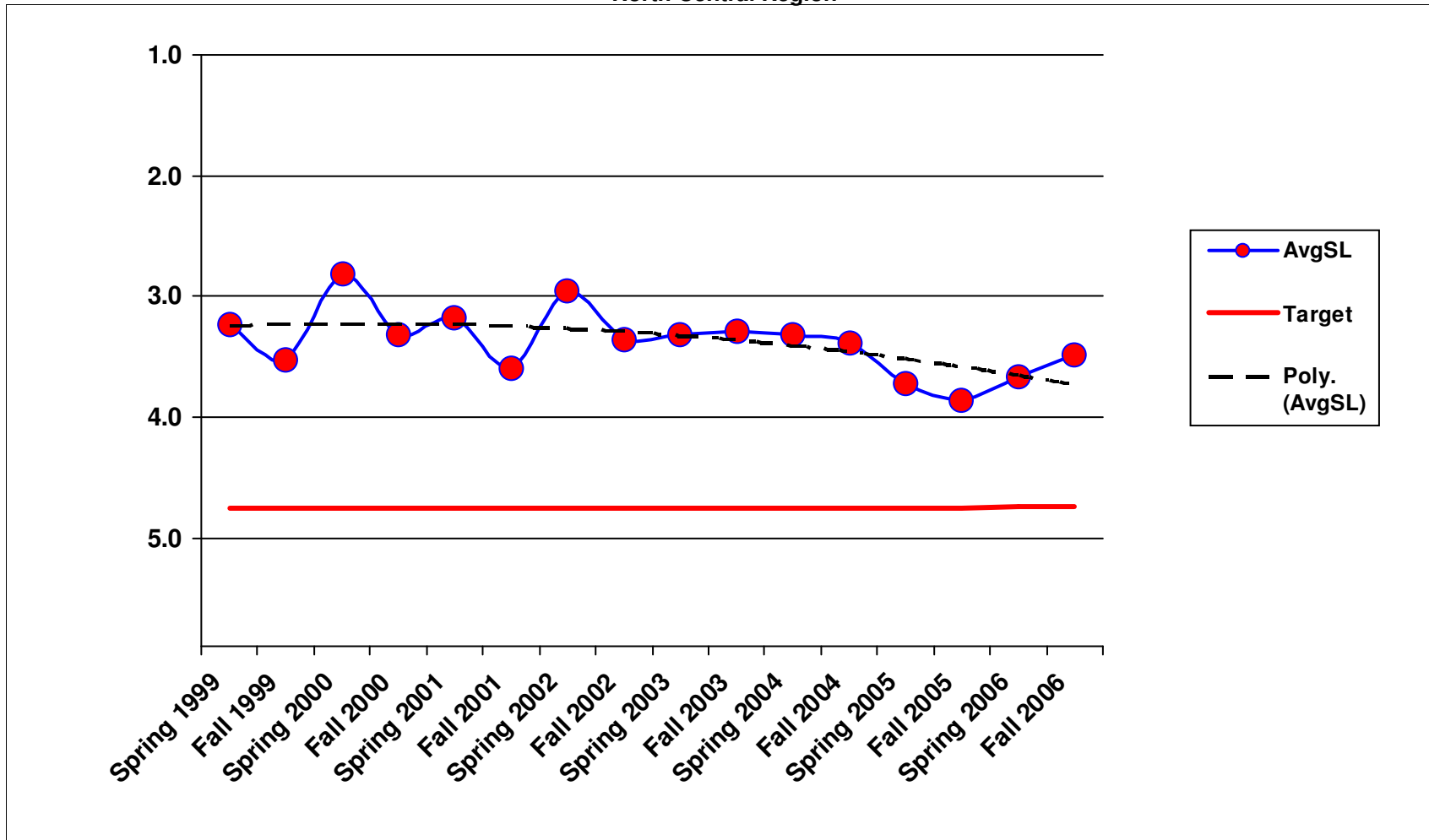
2A3 - Maintain Catch Basins and Inlets
North Central Region



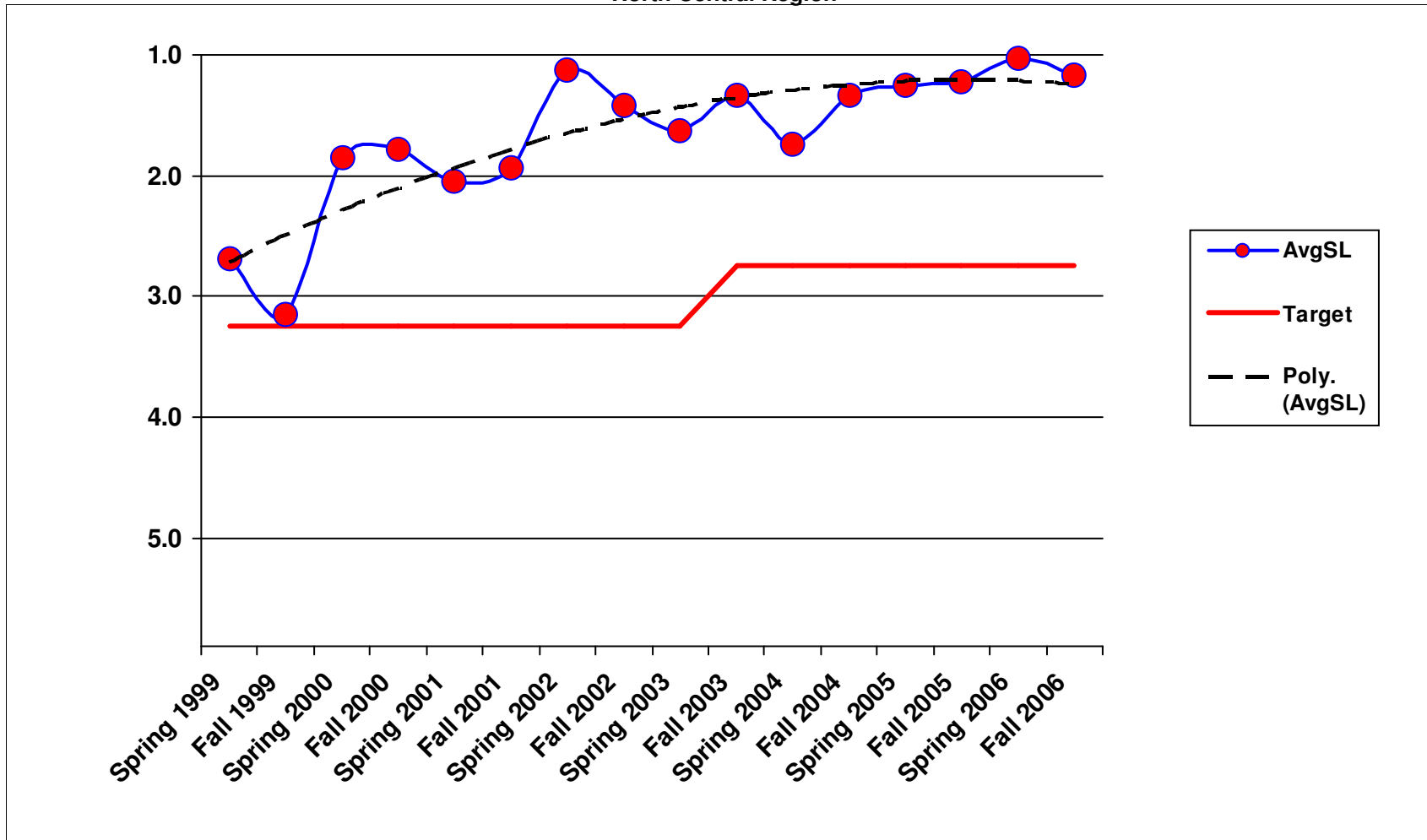
2A5 - Slope Repair
North Central Region



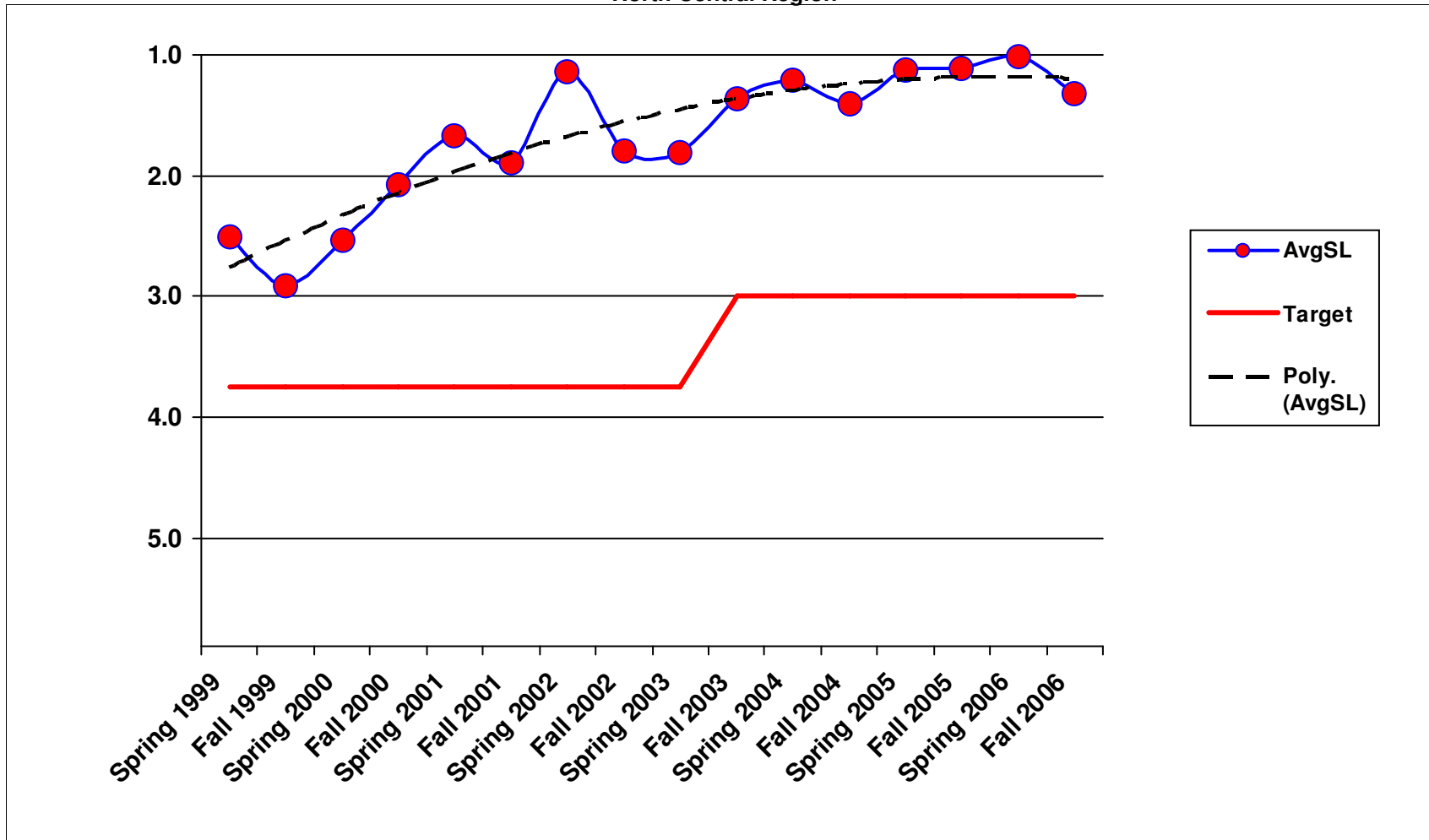
3A1 - Litter Pickup North Central Region



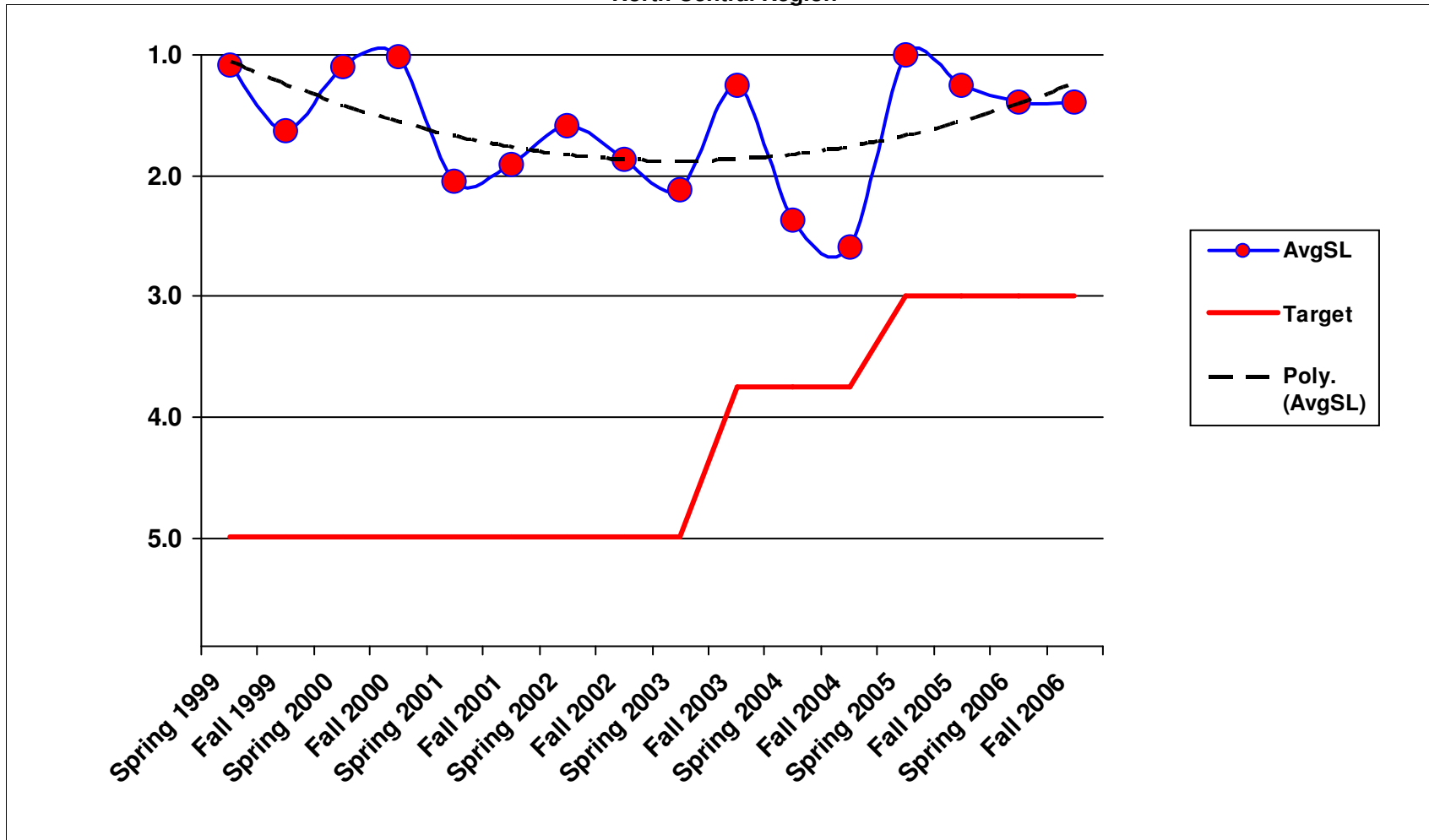
3A2 - Noxious Weed Control North Central Region



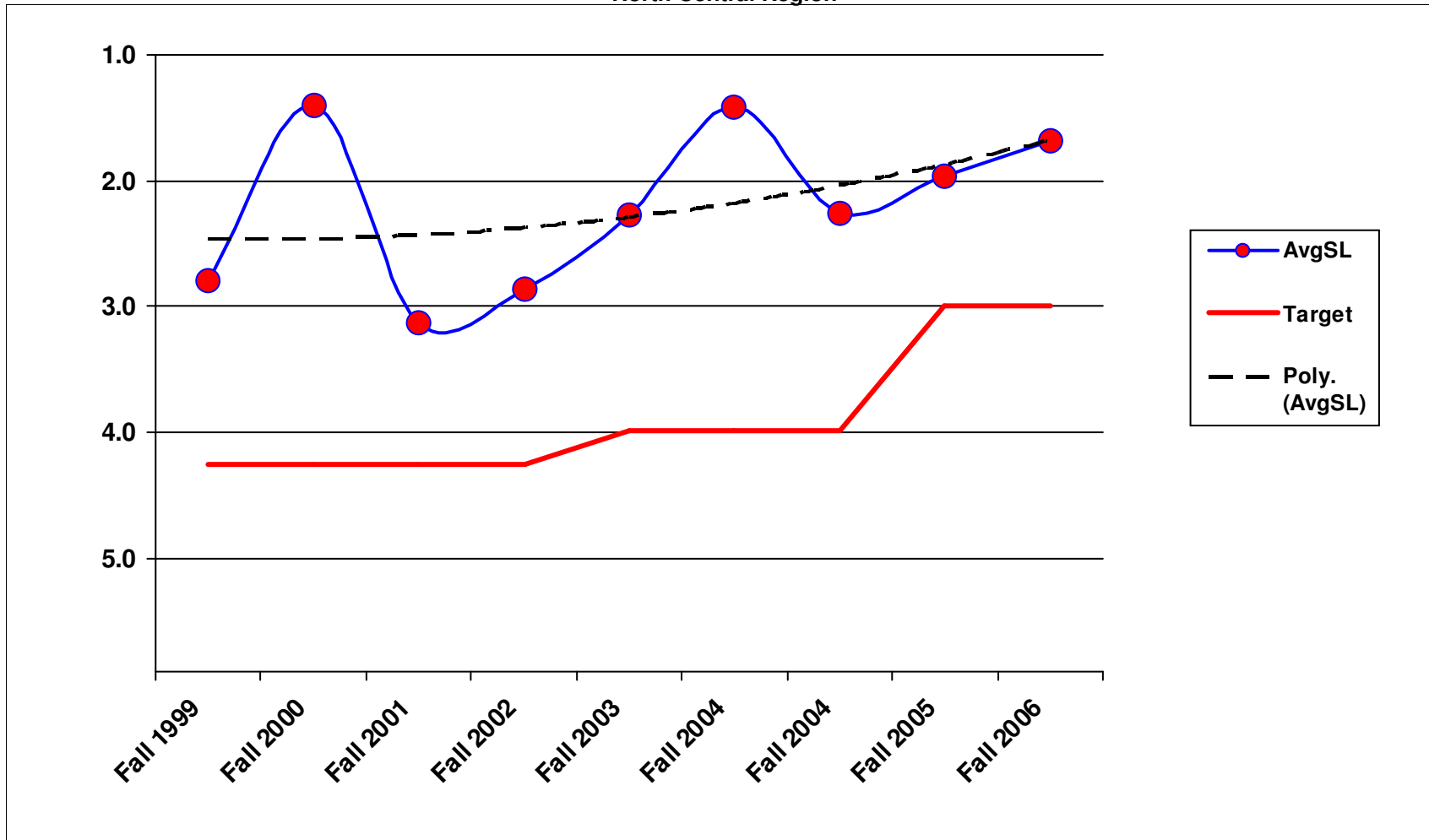
3A3 - Nuisance Vegetation Control North Central Region



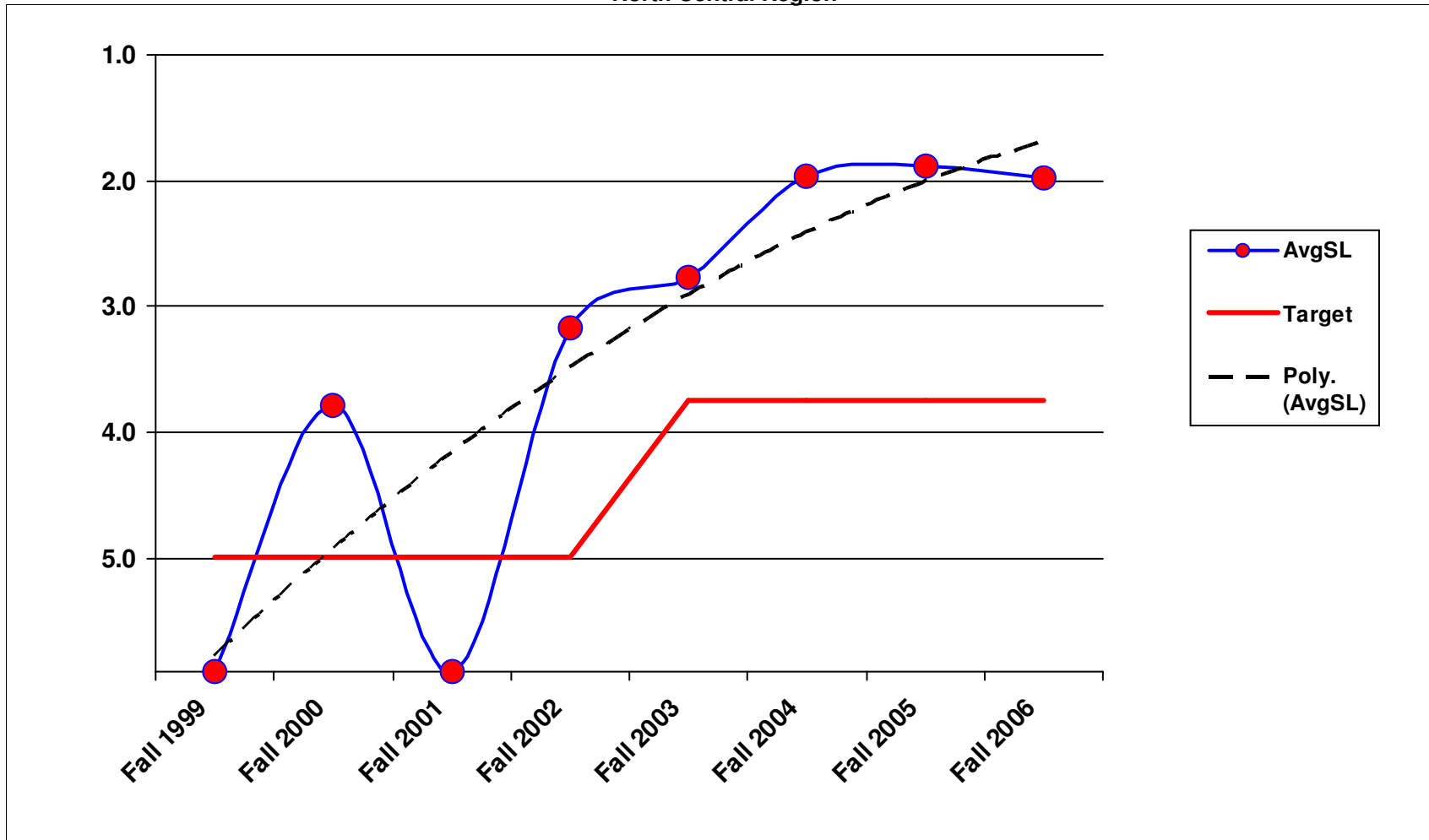
3A4 - Control of Vegetation Obstructions North Central Region



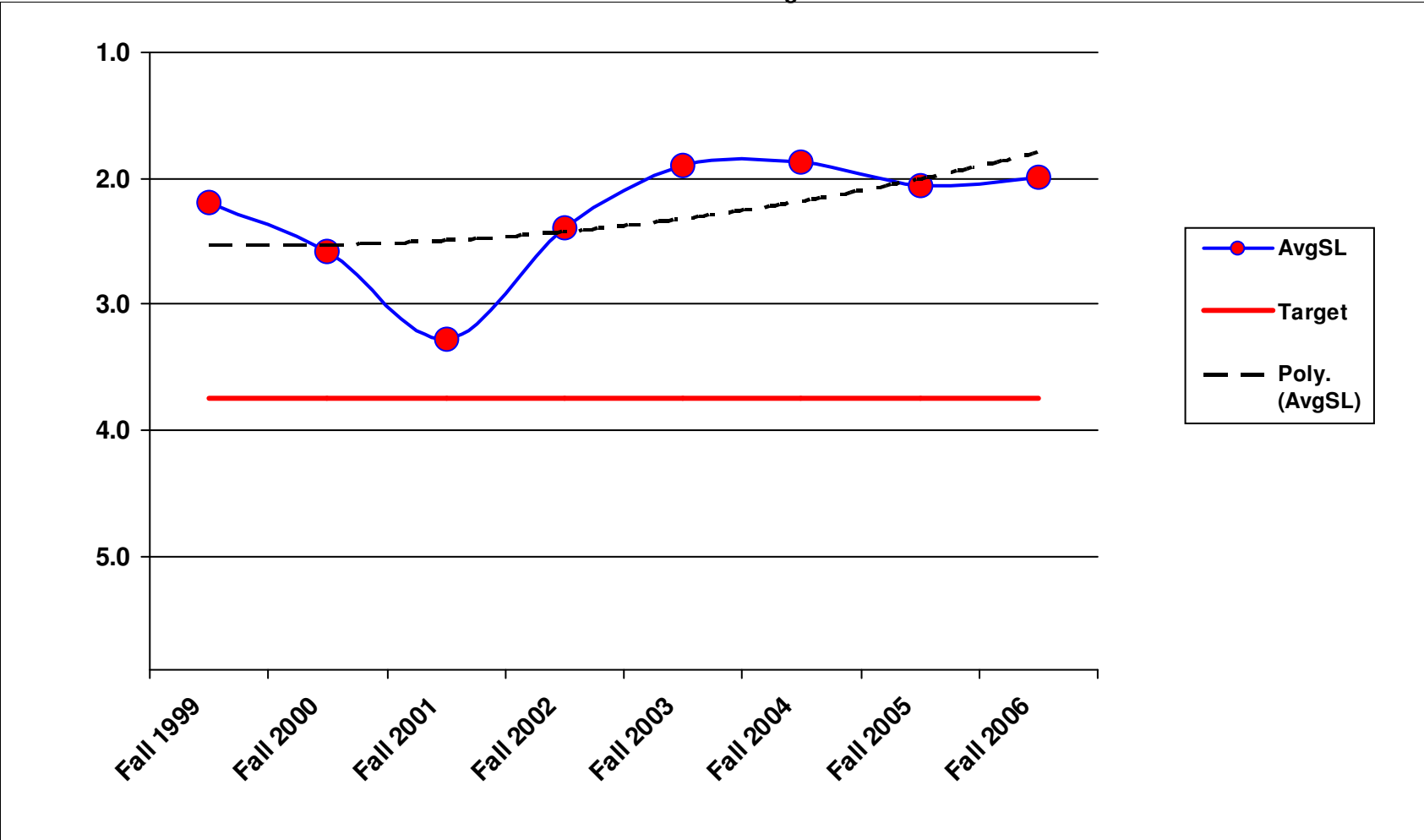
4A1 - Bridge Deck Repair North Central Region



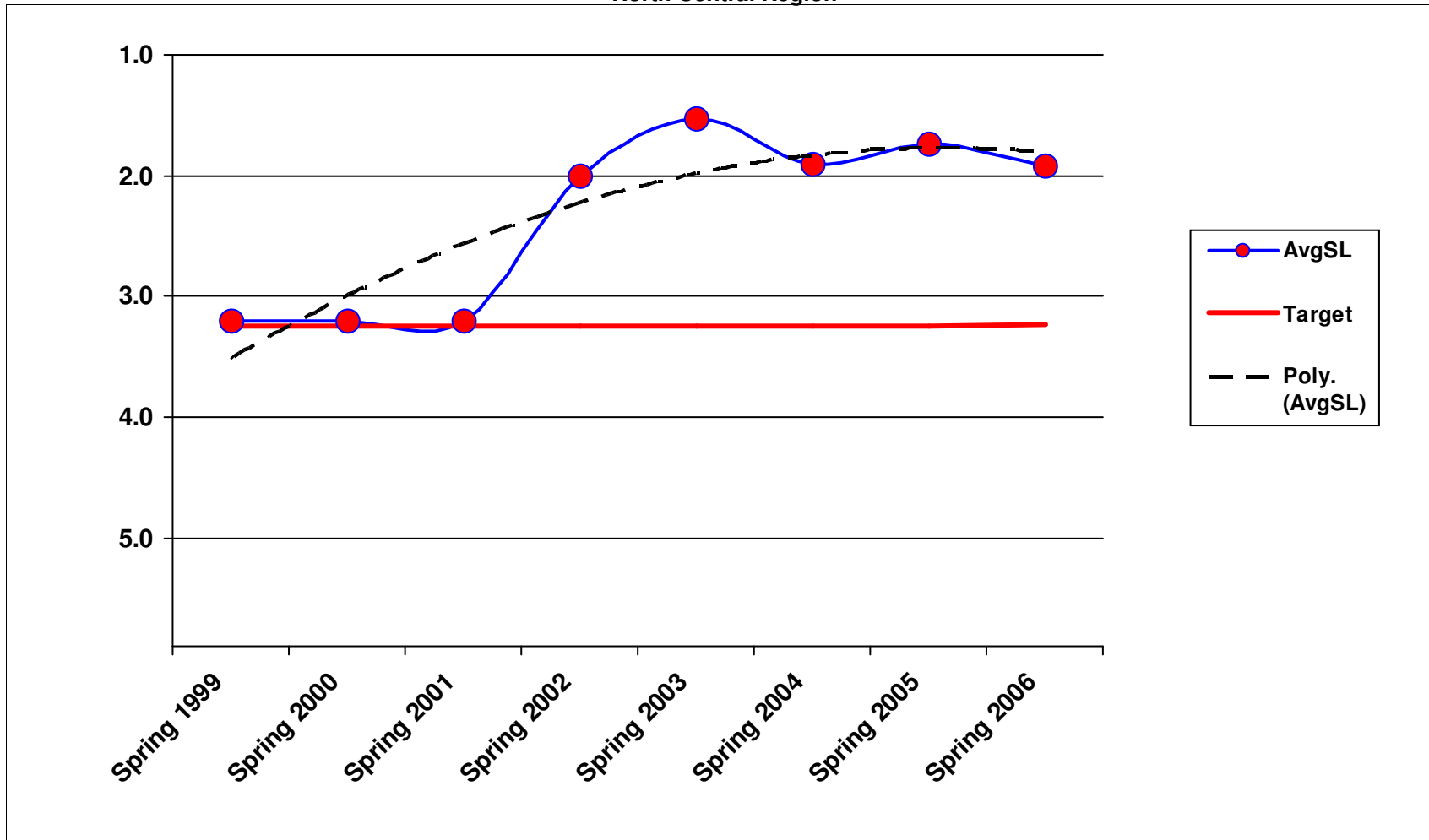
4A2 - Structural Bridge Repair
North Central Region



4A3 - Bridge Cleaning
North Central Region

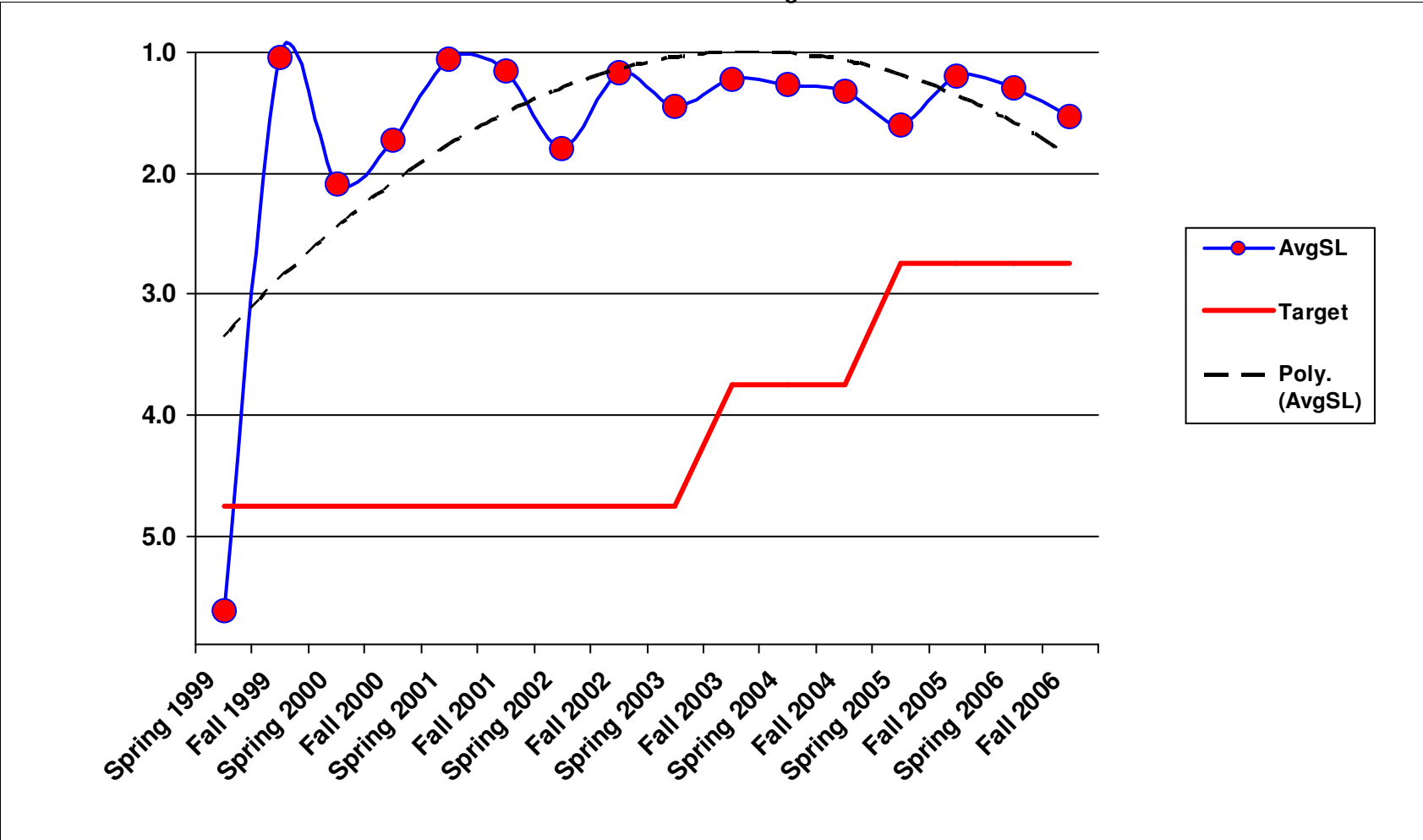


5B1 - Snow and Ice Control Operations North Central Region

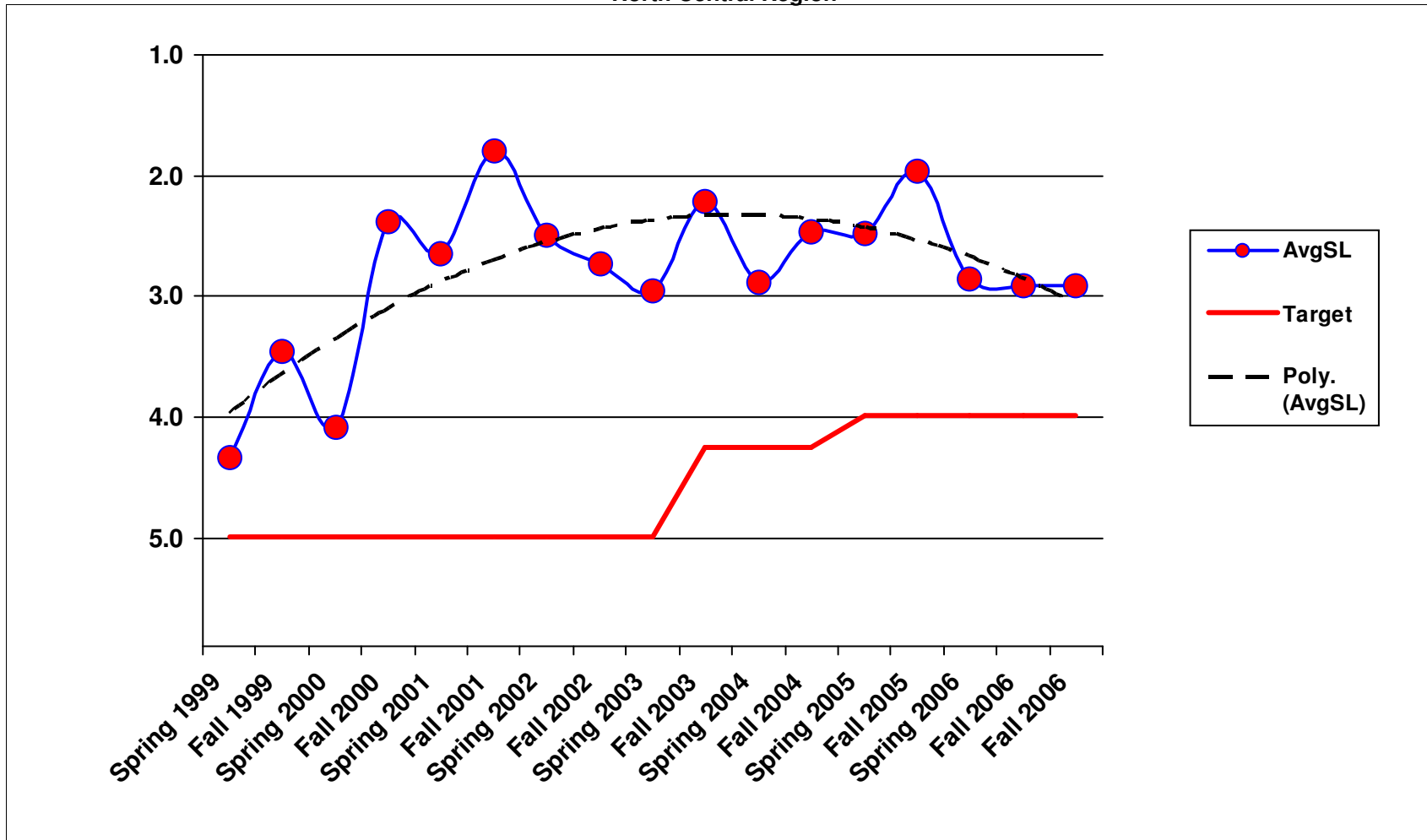


6A2 - Raised/Depressed Pavement Marker Maintenance

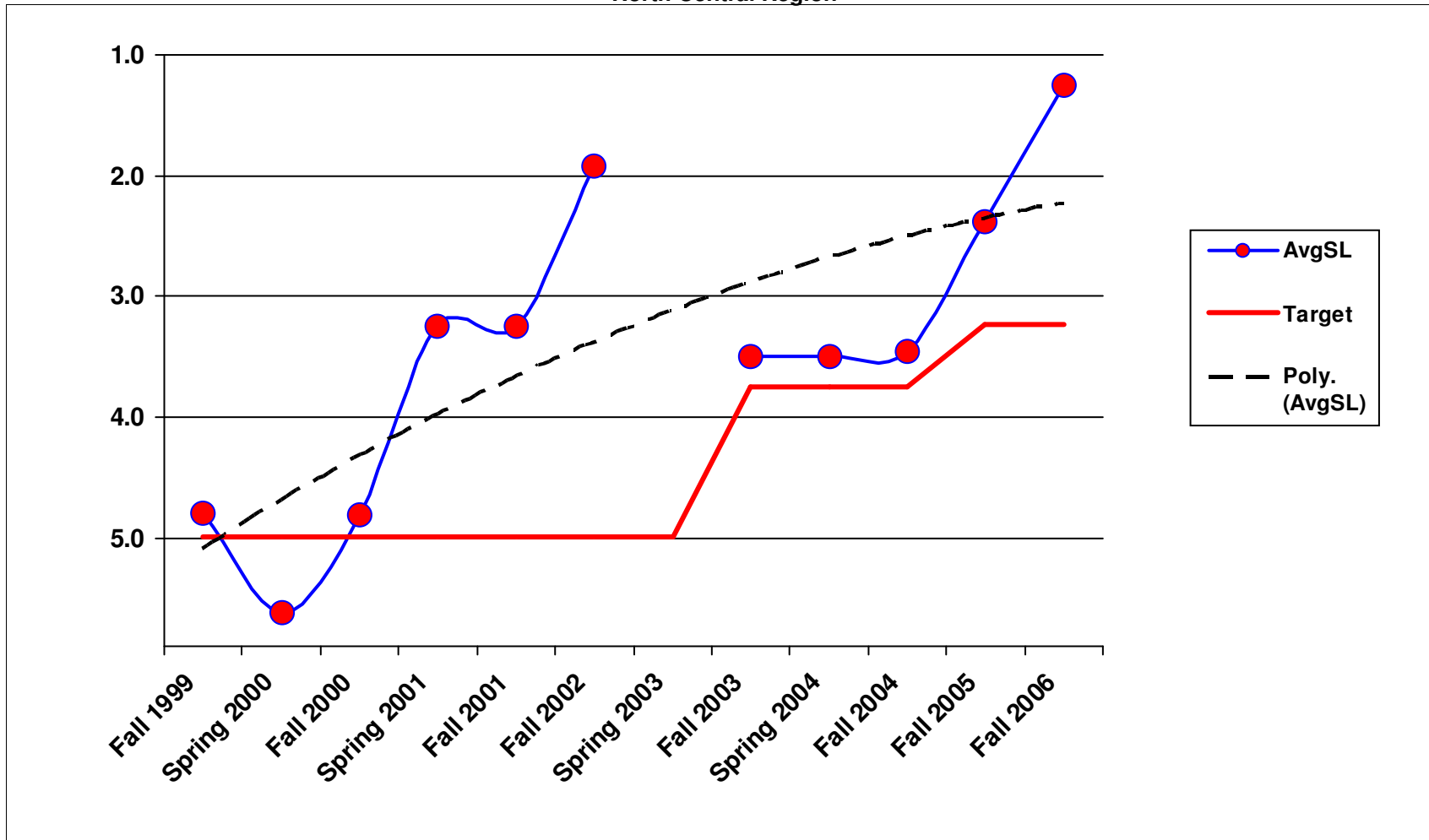
North Central Region



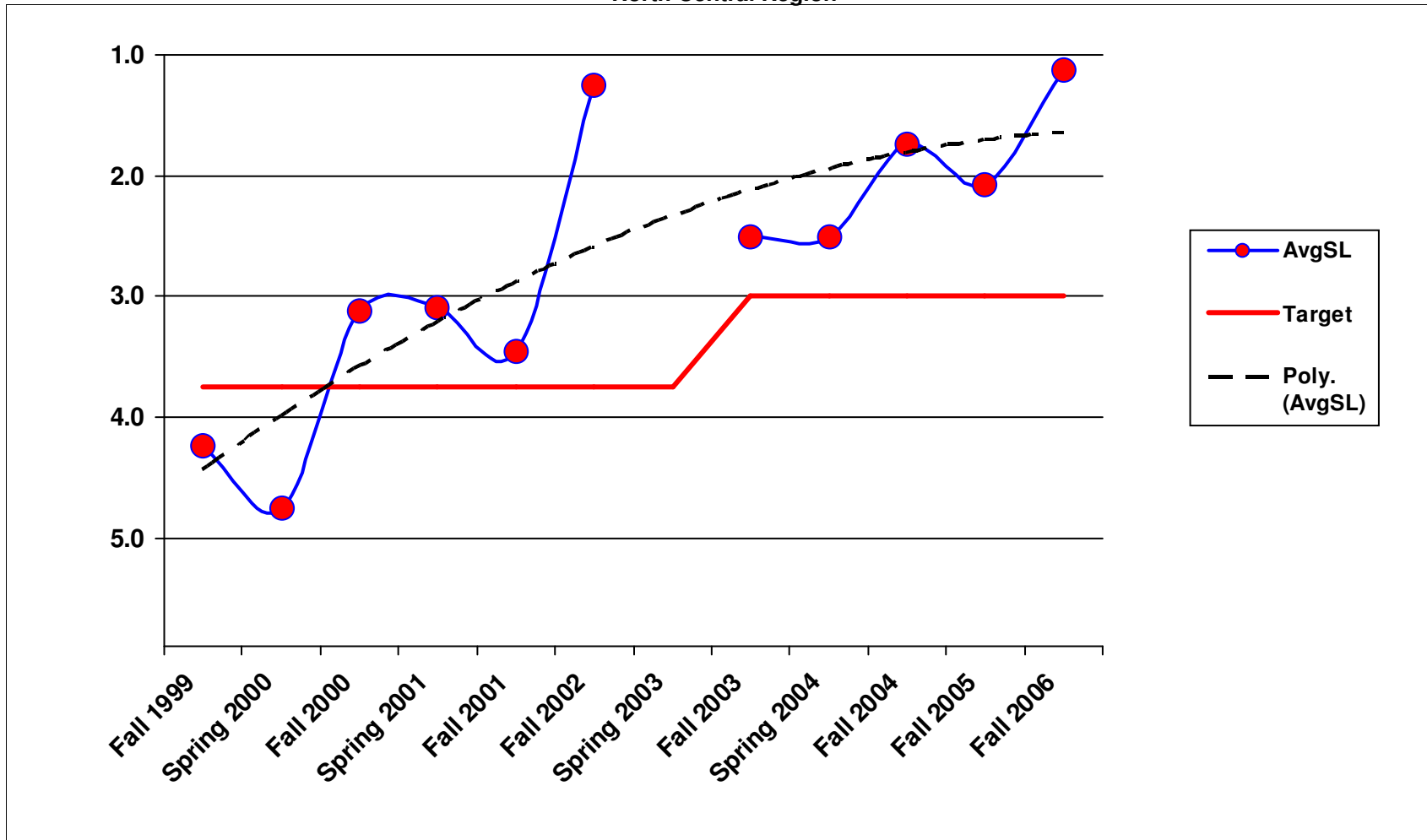
6A3 - Pavement Marking Maintenance North Central Region



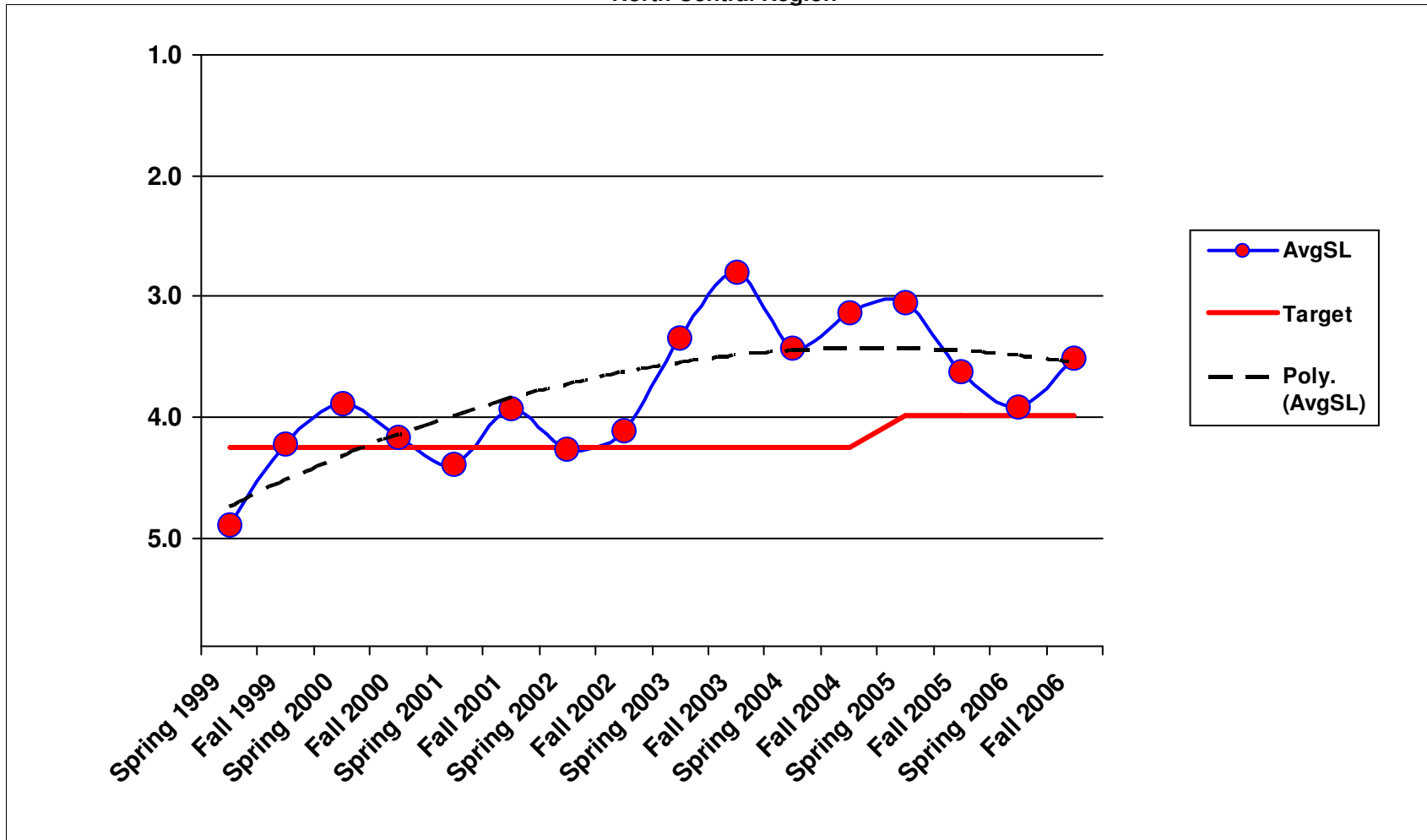
6A4 - Regulatory Sign Maintenance North Central Region



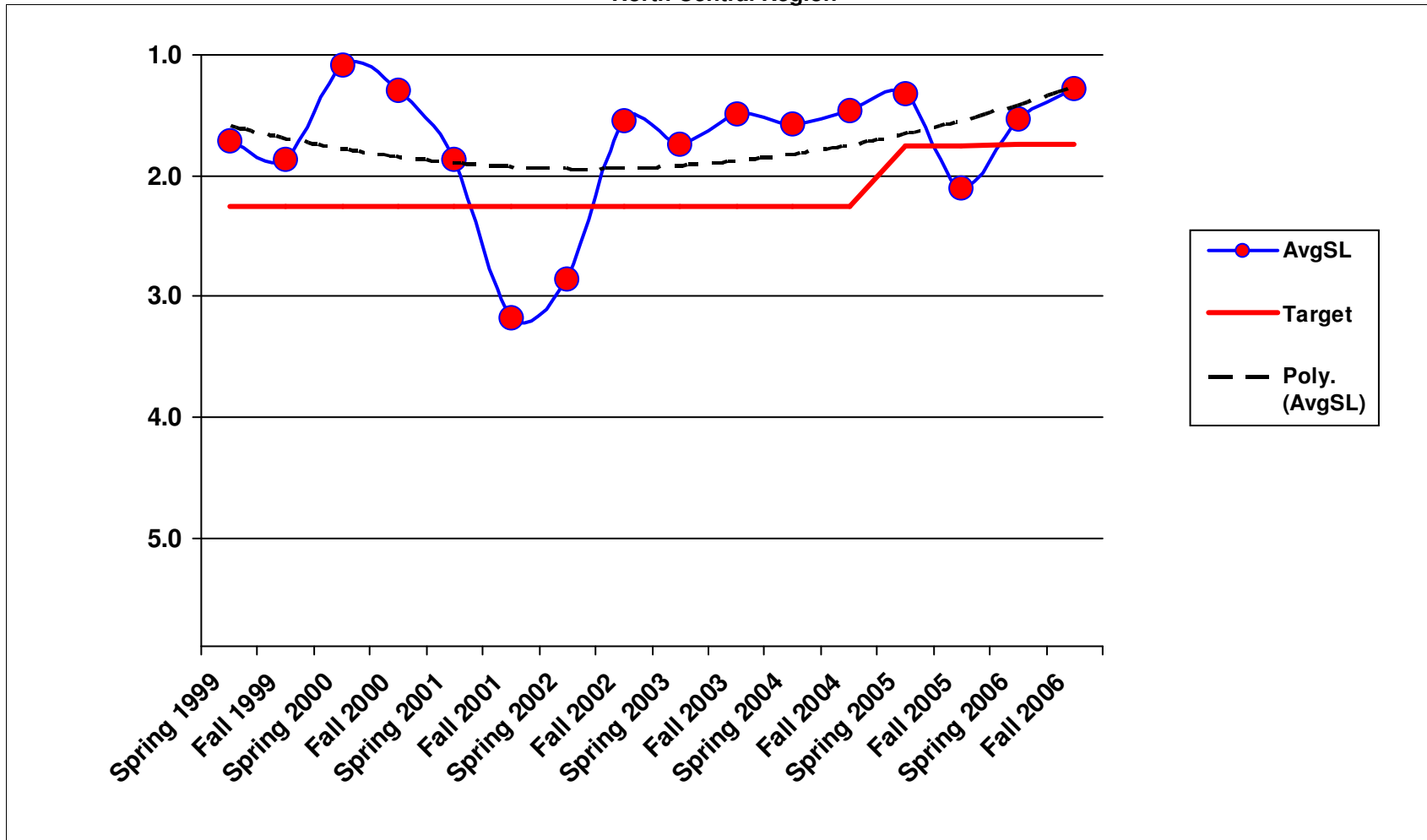
6A5 - Guide Sign Maintenance North Central Region



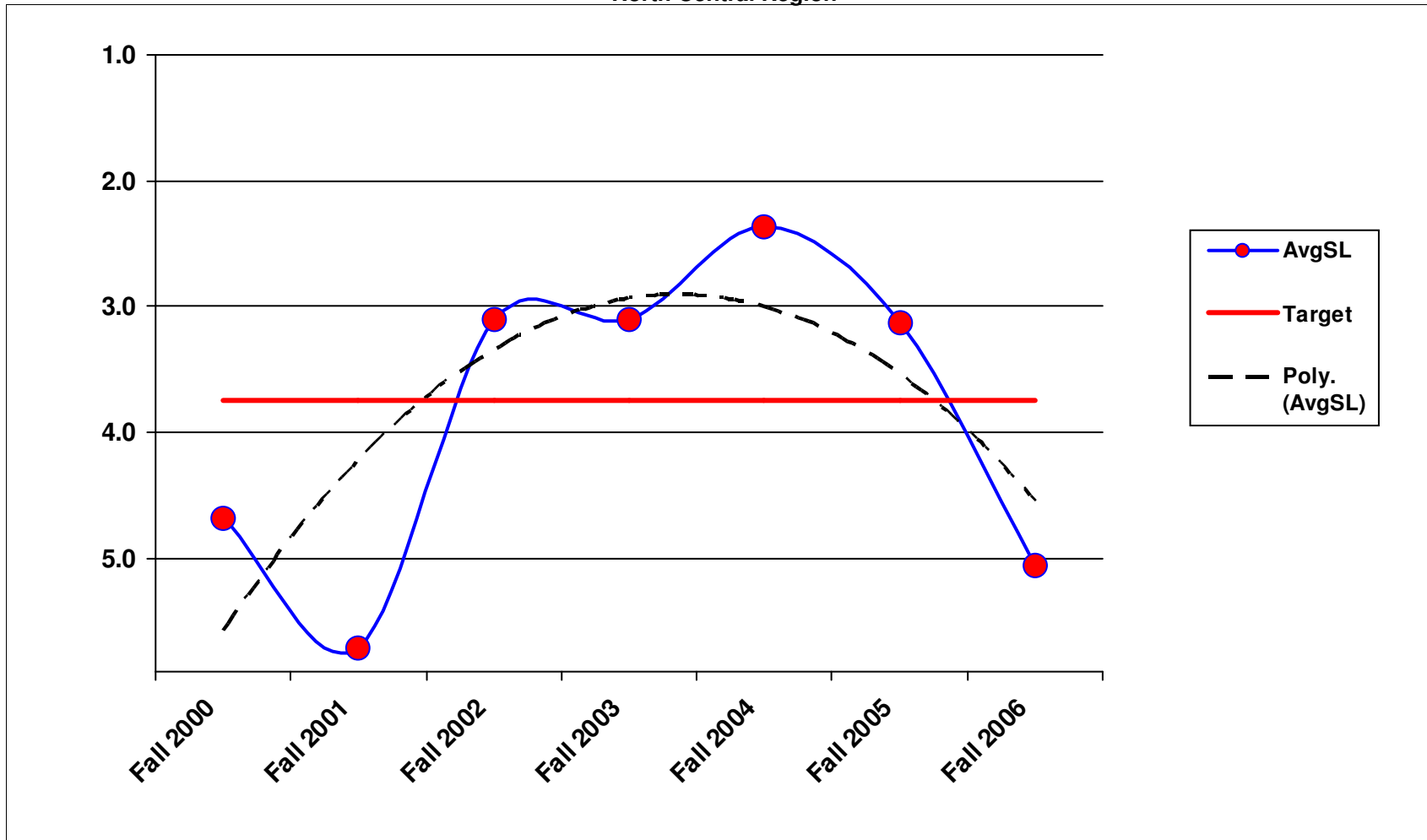
6A6 - Guidepost Maintenance North Central Region



6A7 - Guardrail Maintenance North Central Region

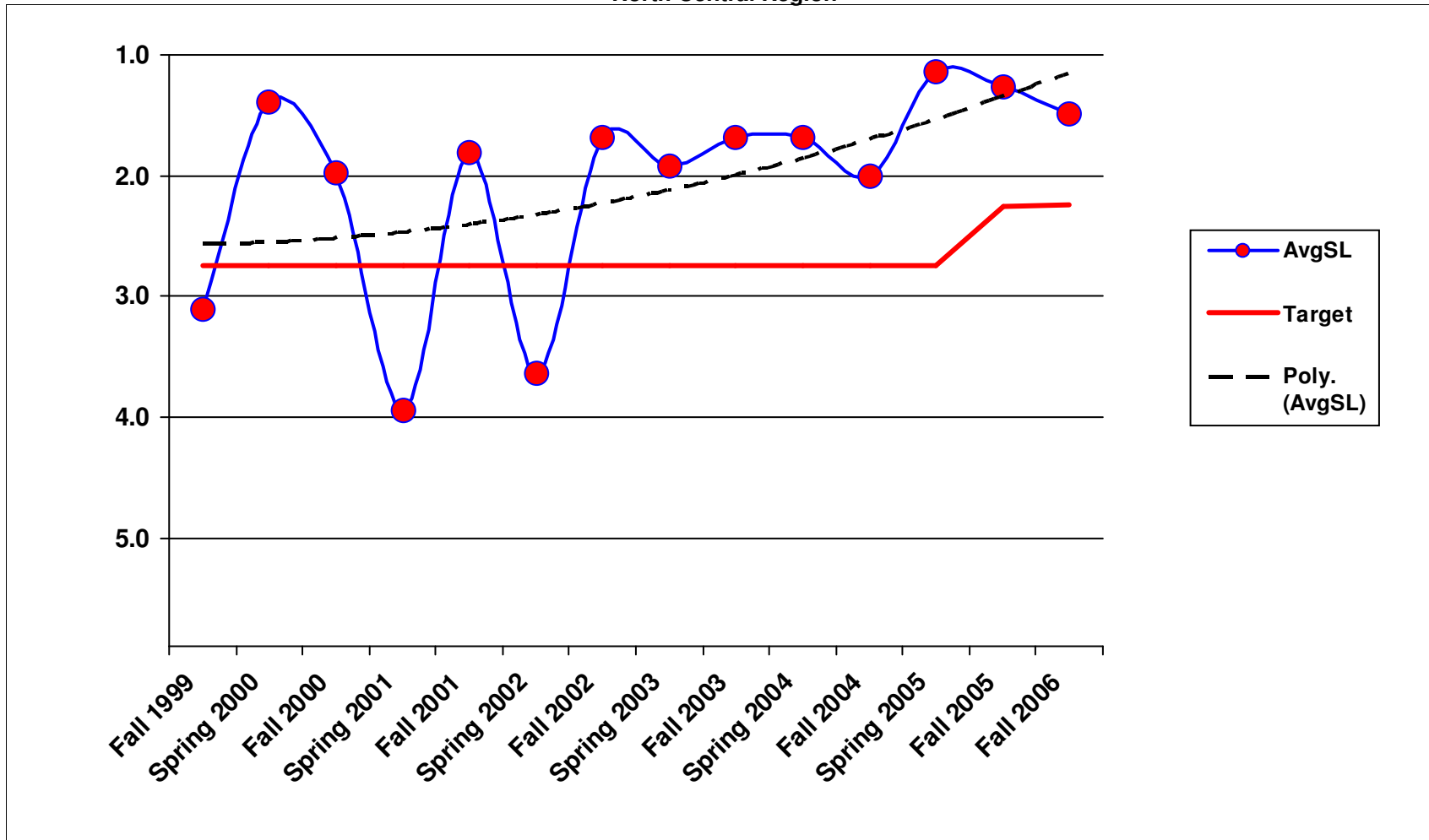


6B1 - Traffic Signal Systems North Central Region

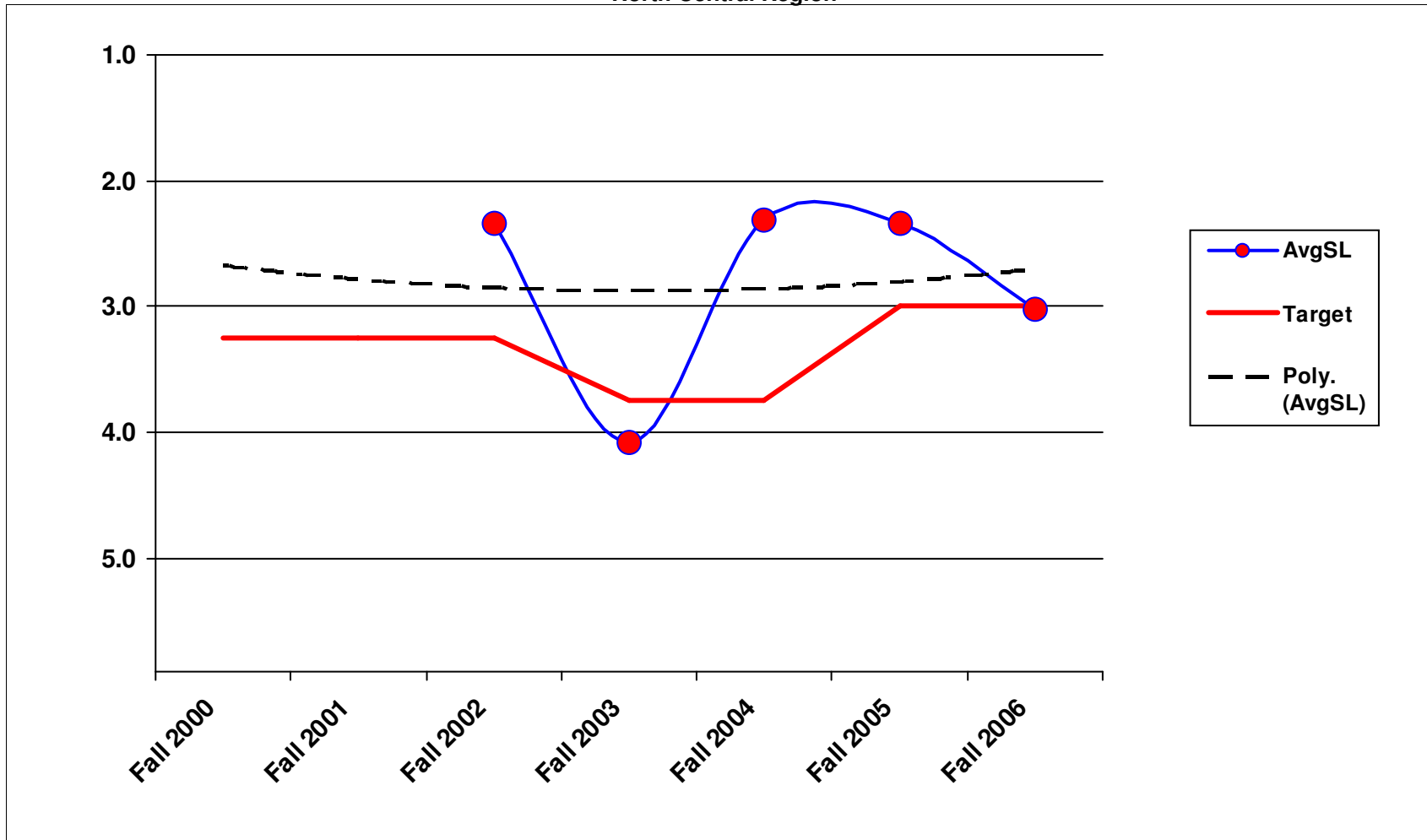


1/23/2007

6B2 - Highway Lighting Systems North Central Region



6B3 - Intelligent Transportaion Systems North Central Region



1/23/2007

7B1 - Rest Area Operations North Central Region

