

Reviewed by Division Services

Date \_\_\_\_\_ Initials \_\_\_\_\_

(T) Program T Funded - 4  
(331010/330000)

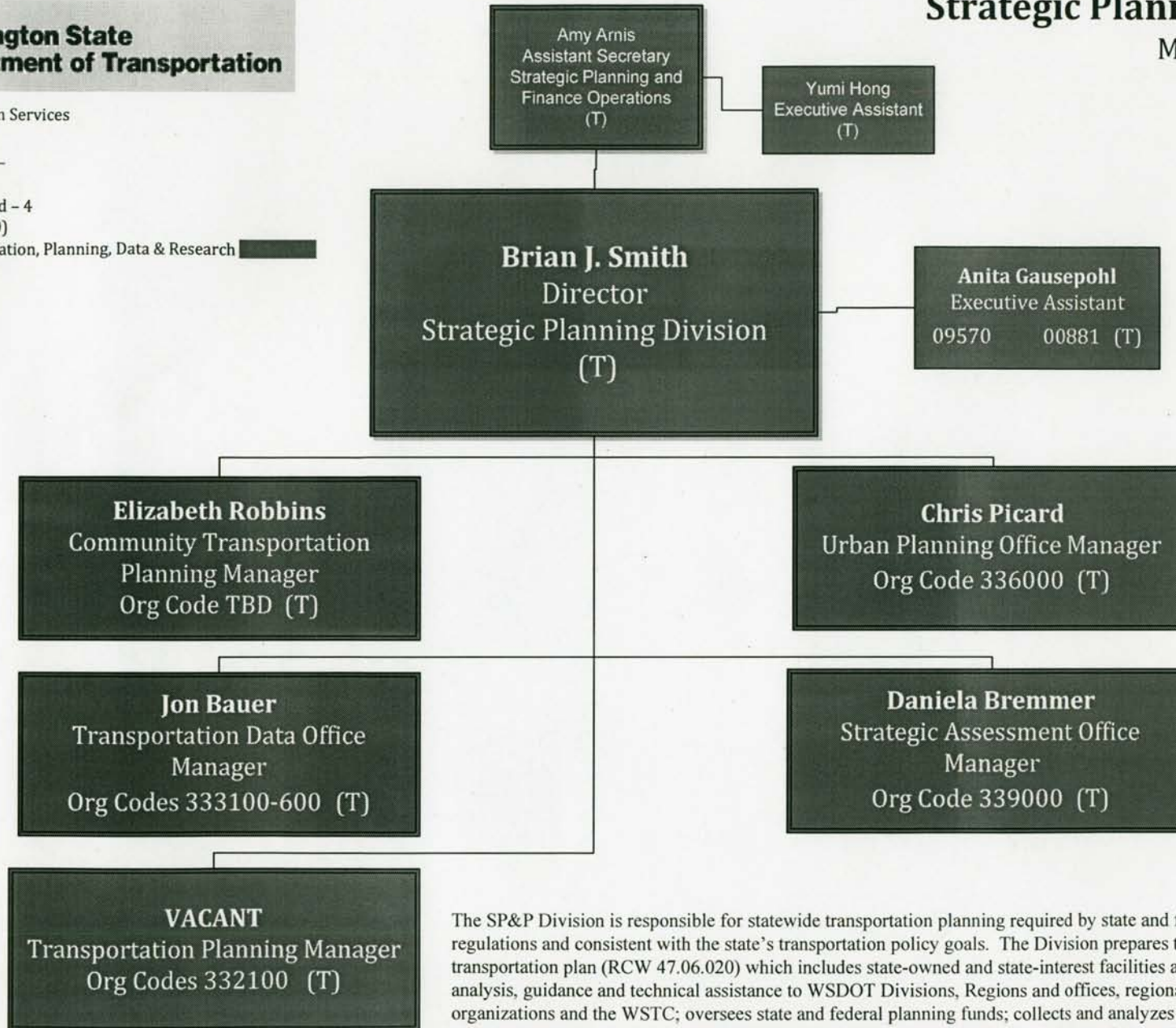
Program T Transportation, Planning, Data & Research

# Strategic Planning Division

Management Team

Org - 33 Series

(Except 338000)



The SP&P Division is responsible for statewide transportation planning required by state and federal laws and regulations and consistent with the state's transportation policy goals. The Division prepares the statewide multimodal transportation plan (RCW 47.06.020) which includes state-owned and state-interest facilities and services; provides policy analysis, guidance and technical assistance to WSDOT Divisions, Regions and offices, regional and metropolitan planning organizations and the WSTC; oversees state and federal planning funds; collects and analyzes data on system performance and provides data such as collision reports to state agencies and the public; develops GIS applications and data for WSDOT and other state and local agencies; works with local jurisdictions concerning land use and growth management; conducts special studies at the request of the legislature and plays a major role in WSDOT's compliance with recent climate change and sustainability legislation and the related Governor's Executive Order 09-05; provides detailed modeling and analysis in corridor development studies identifying future investment needs; and reports transportation system and departmental performance in the Gray Notebook, GMAP, OFM's Transportation Progress Report, before-and-after project studies, and federal stimulus spending impacts as required by the ARRA, supporting WSDOT's accountability and transparency.

Signed: \_\_\_\_\_ Date: \_\_\_\_\_  
Brian J. Smith, Director