



SR 520 Tolling: Traffic Monitoring

Sunday, January 08, 2012

Baseline data: Sun, 10/29-11/18 & 11/26-12/16

Daily Volume:

% change
1/8/2012
baseline

SR 520 Bridge

-55%
30,700
68,000

Cross-lake Total

I-90, SR 520, SR 522

I-90 Bridge

19%
101,800
85,200

-10%
162,400
180,300

SR 522 at 68th Ave NE

10%
29,900
27,100

Traffic Summary:

Traffic volume on the SR 520 bridge was down 55% compared to a typical Sunday. I-90 volume increased 19% and SR 522 volume increased by 12%. Volume in the rest of the region was down 0-9% compared to typical November through mid-December Sunday. There was no congestion on any freeway throughout the day.

Major Incidents:

Collision on SR 99 at 1st Ave Bridge blocking 1-2 lanes from 12:31 to 12:59 pm

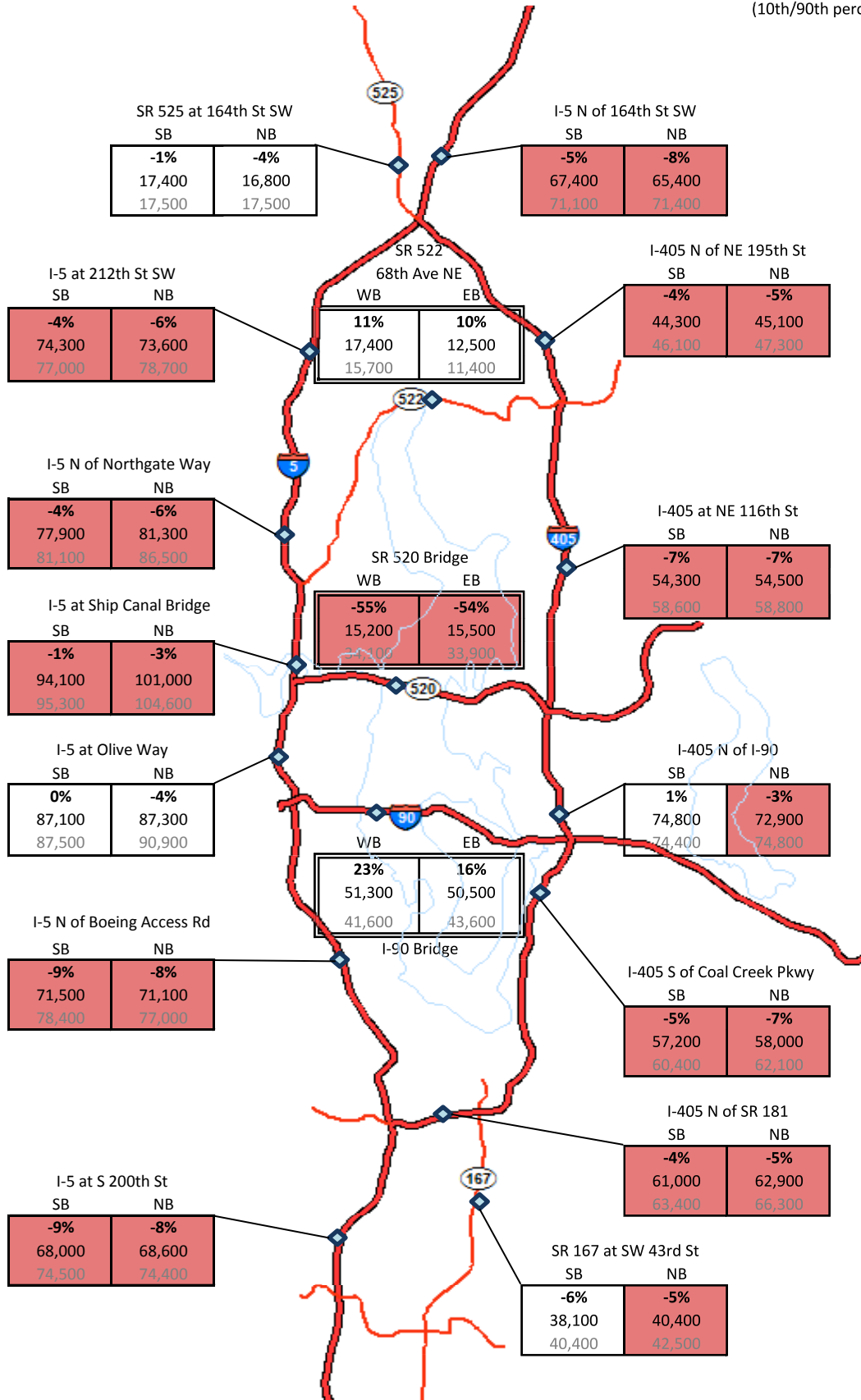
Special Events:

None

SR 520 Tolling: Traffic Monitoring
Daily Mainline Volumes
Sunday, January 08, 2012

Base data: Sun, 10/29-11/18 & 11/26-12/16

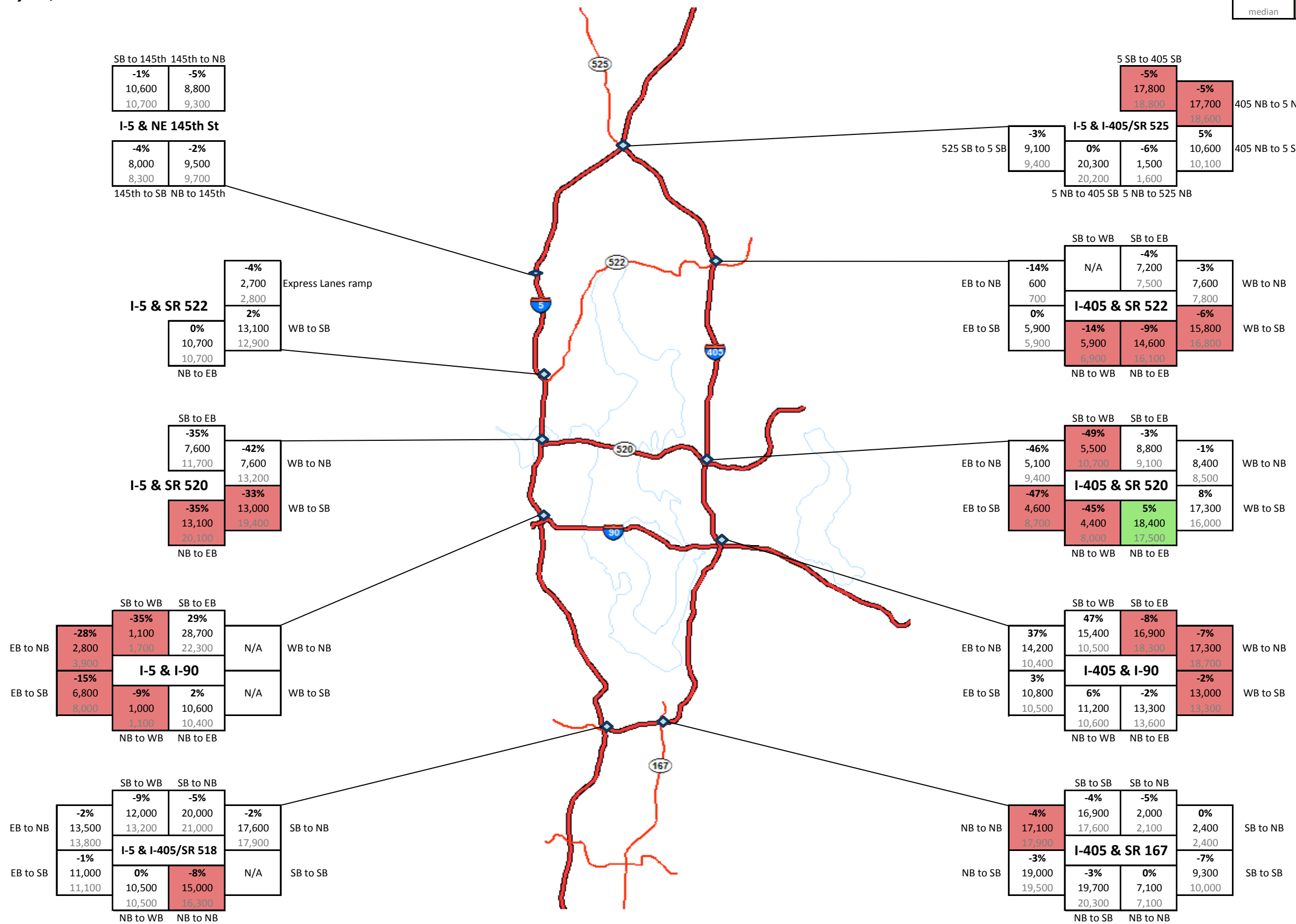
% change 1/8/2012 median	above range of typical variation	below range of typical variation
	(10th/90th percentile)	



SR 520 Tolling: Traffic Monitoring
Daily Interchange Volumes
Sunday, January 08, 2012

Base data: Sun, 10/29-11/18 & 11/26-12/16

% change	above range	below range
1/8/2012	of typical	of typical
median	variation	variation
	(10th/90th percentile)	



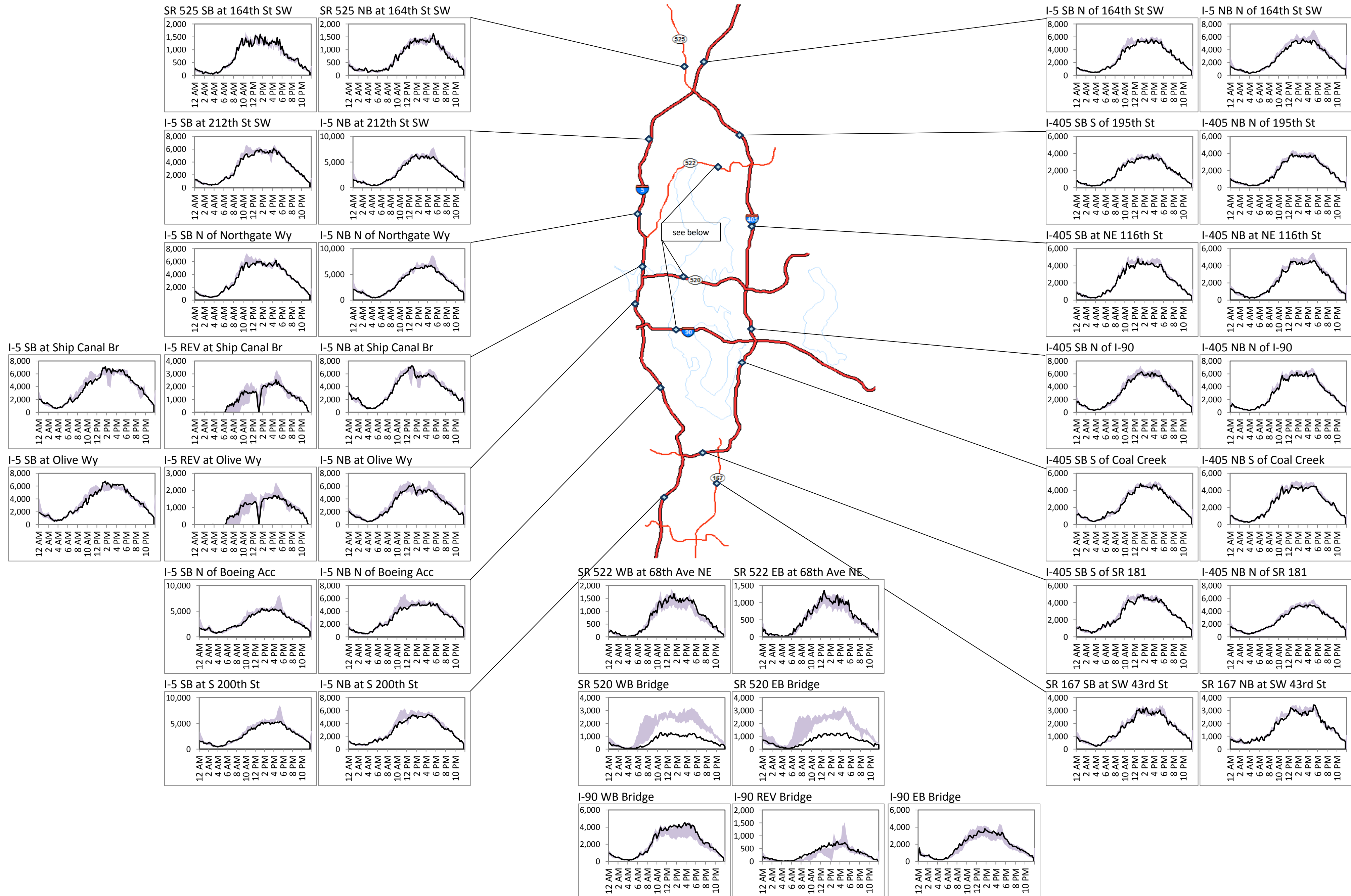
SR 520 Tolling: Traffic Monitoring

Hourly Mainline Volumes

Sunday, January 8, 2012

— Sunday, January 8, 2012

■ Typical Range (10-90%ile, Sun, 10/29-11/18 & 11/26-12/16)



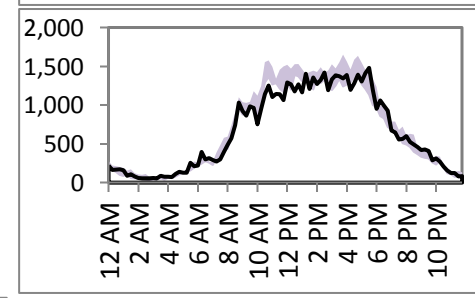
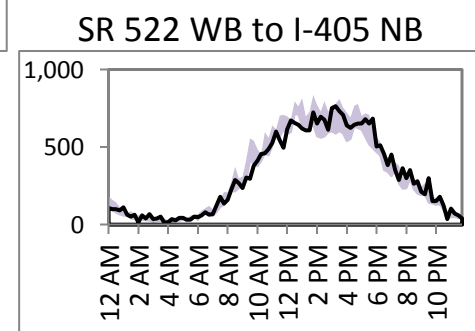
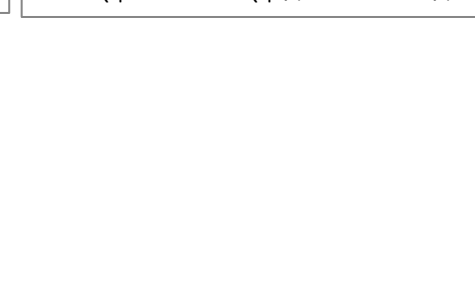
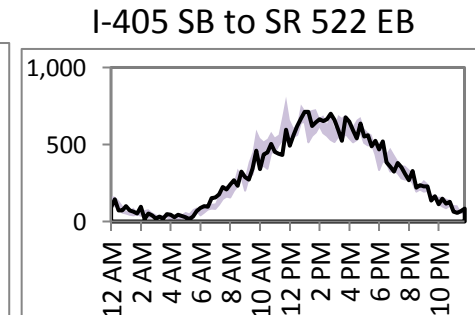
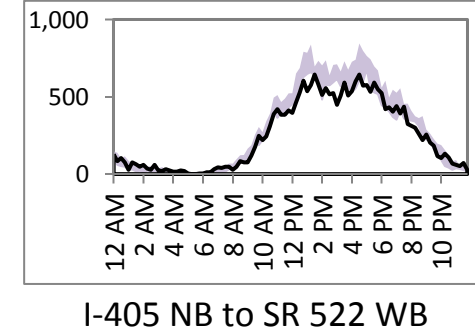
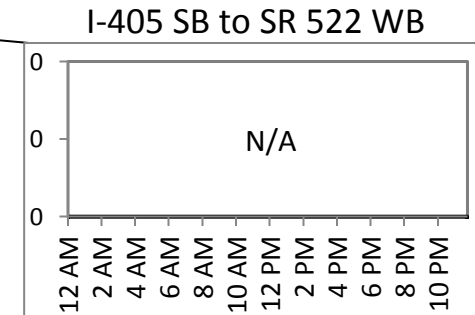
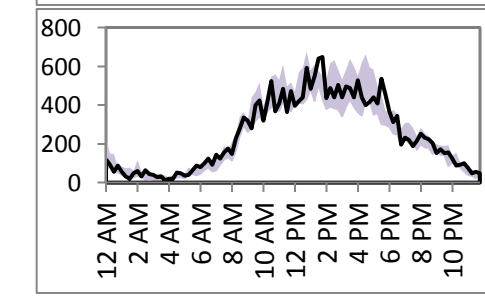
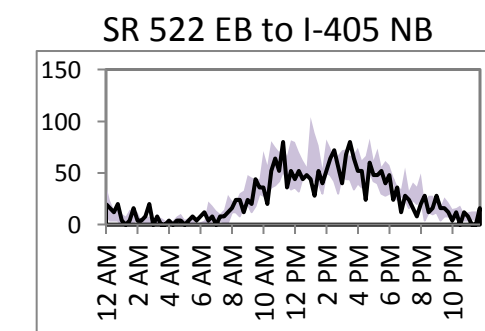
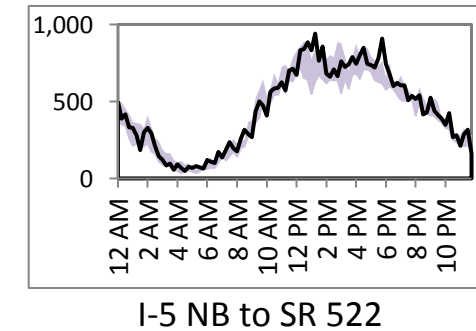
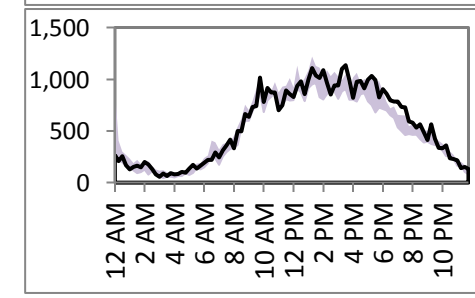
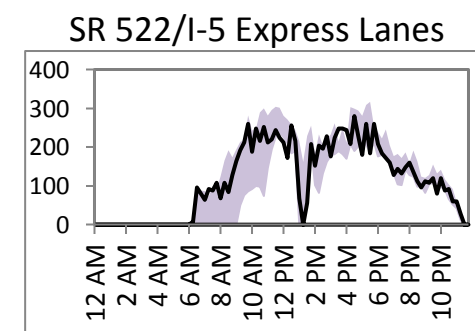
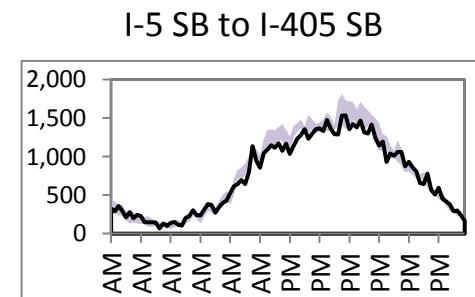
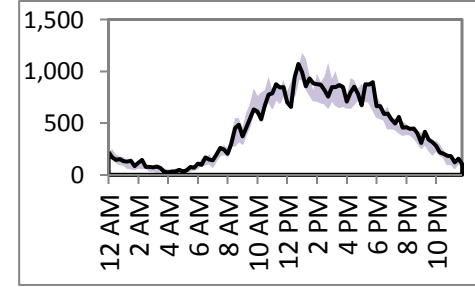
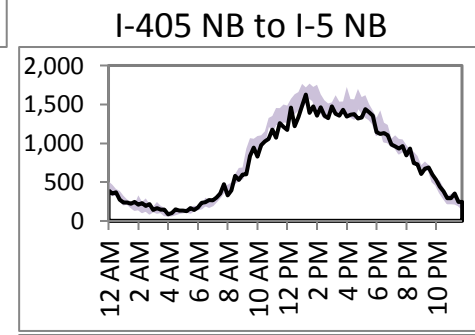
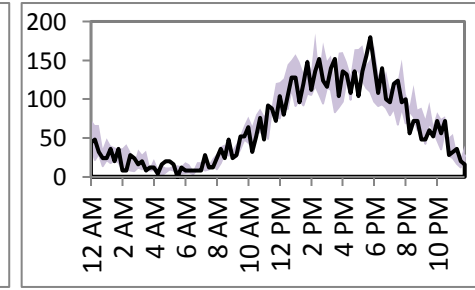
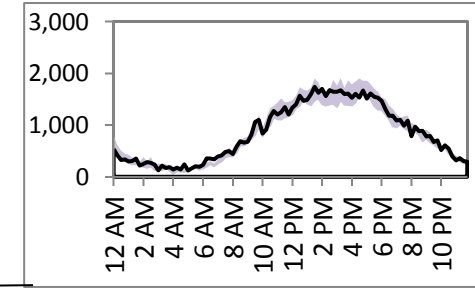
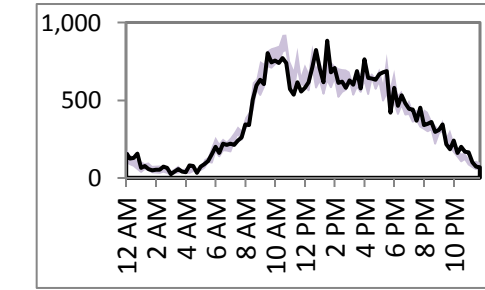
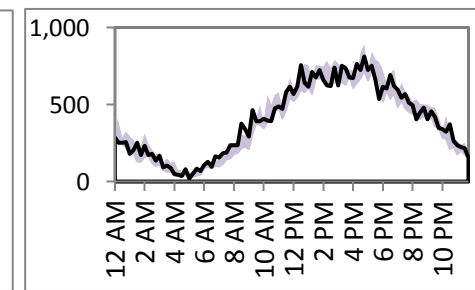
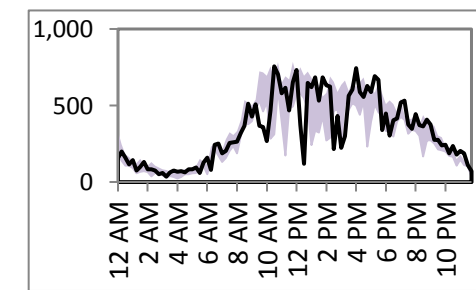
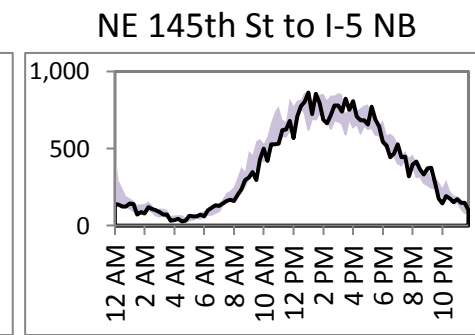
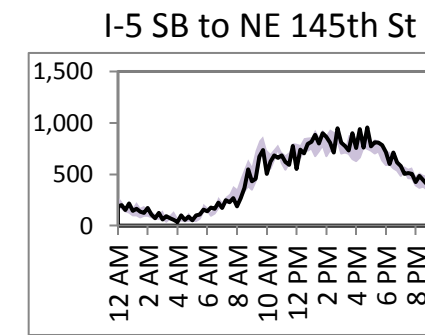
SR 520 Tolling: Traffic Monitoring

Hourly Interchange Volumes

Sunday, January 8, 2012

— Sunday, January 8, 2012

■ Typical Range (10-90%ile, Sun, 10/29-11/18 & 11/26-12/16)



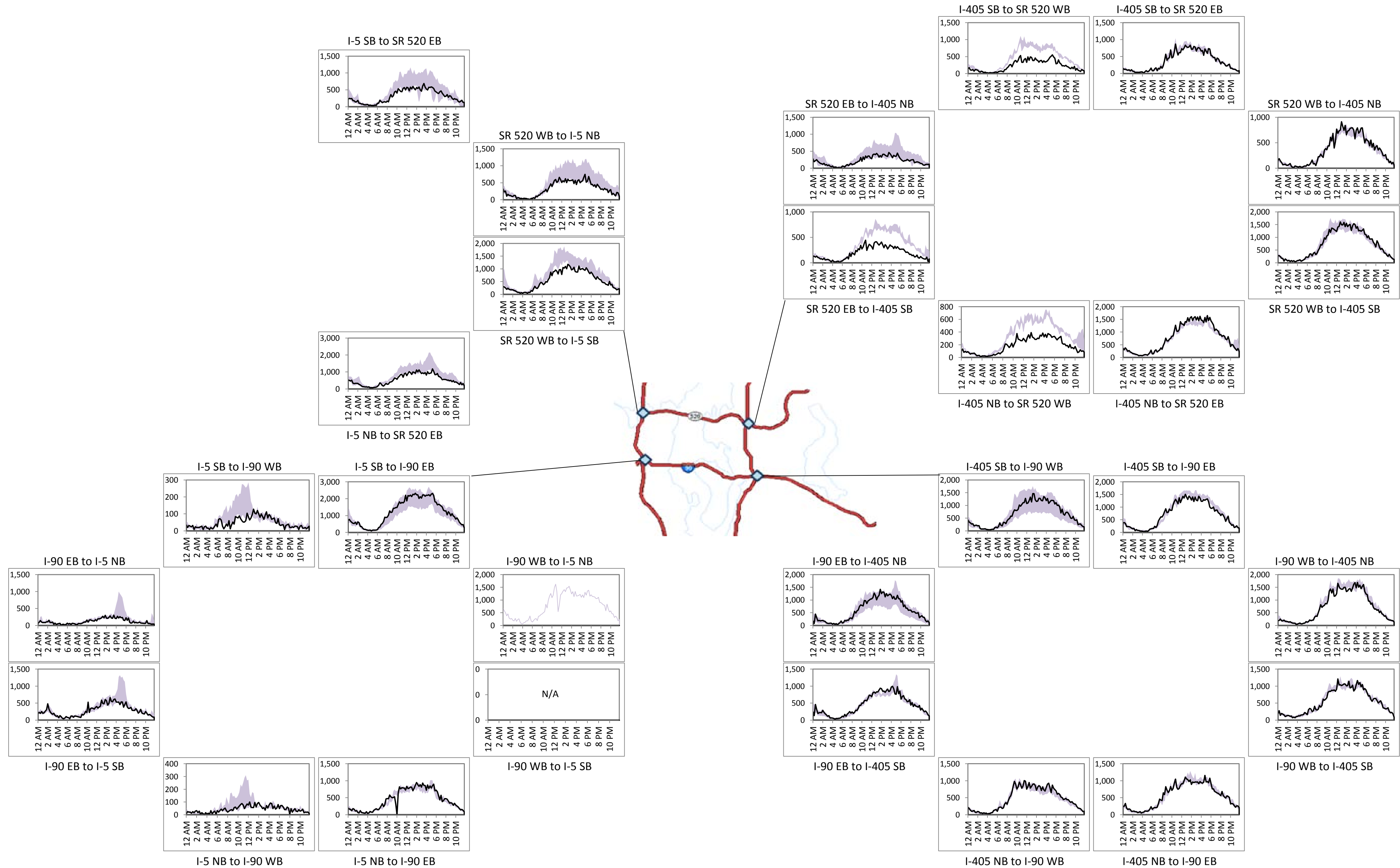
SR 520 Tolling: Traffic Monitoring

Hourly Interchange Volumes

Sunday, January 8, 2012

— Sunday, January 8, 2012

■ Typical Range (10-90%ile, Sun, 10/29-11/18 & 11/26-12/16)



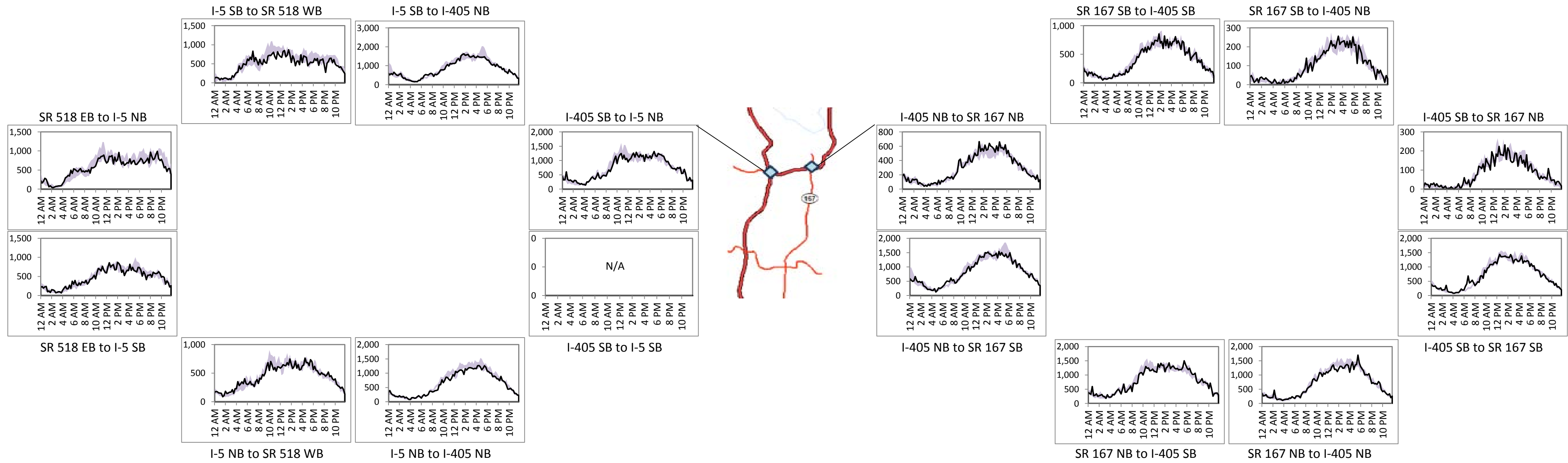
SR 520 Tolling: Traffic Monitoring

Hourly Interchange Volumes

Sunday, January 8, 2012

— Sunday, January 8, 2012

■ Typical Range (10-90%ile, Sun, 10/29-11/18 & 11/26-12/16)



SR 520 Tolling: Traffic Monitoring

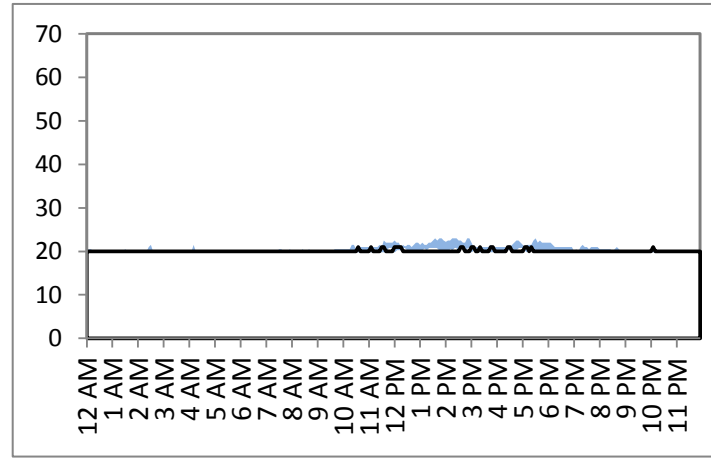
Travel Times

Sunday, January 8, 2012

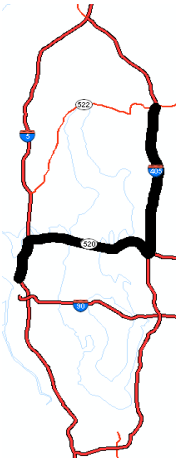
— Sunday, January 8, 2012

■ Typical Range (10-90%ile, Sun, 10/29-11/18 & 11/26-12/16)

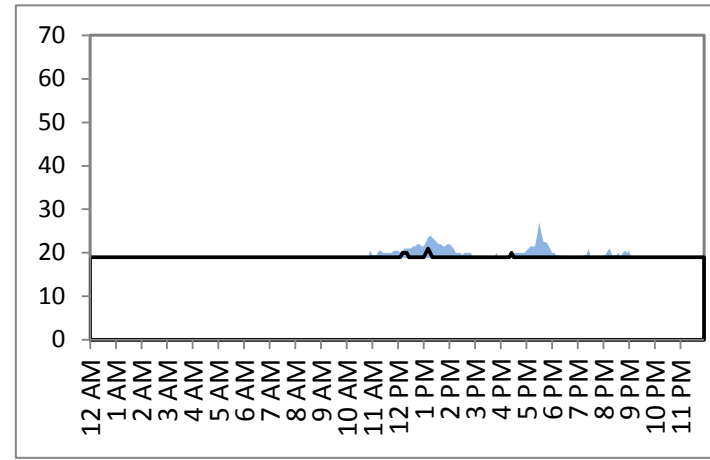
Woodinville to Seattle



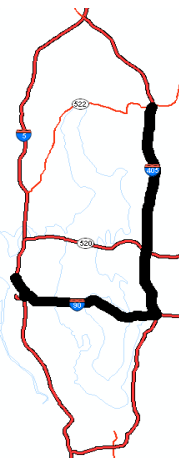
via 520



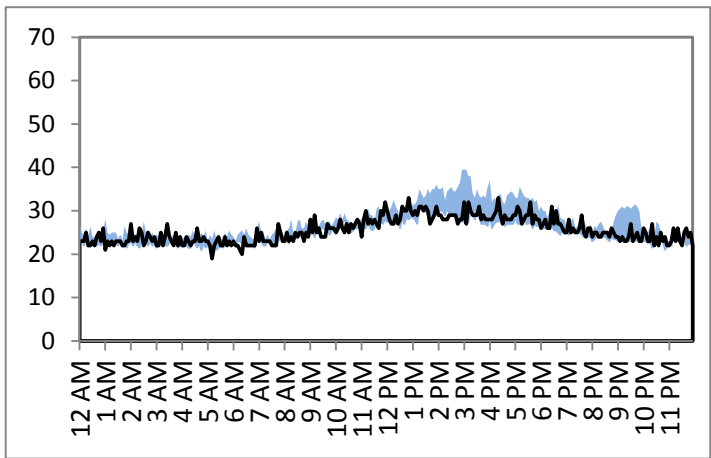
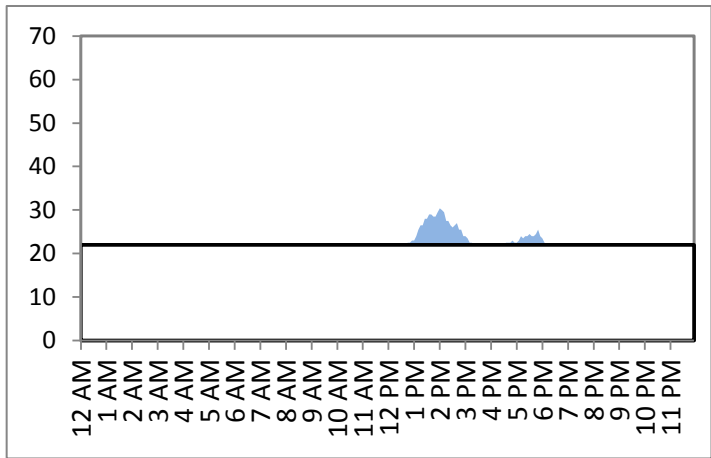
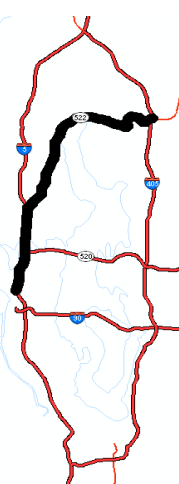
Seattle to Woodinville



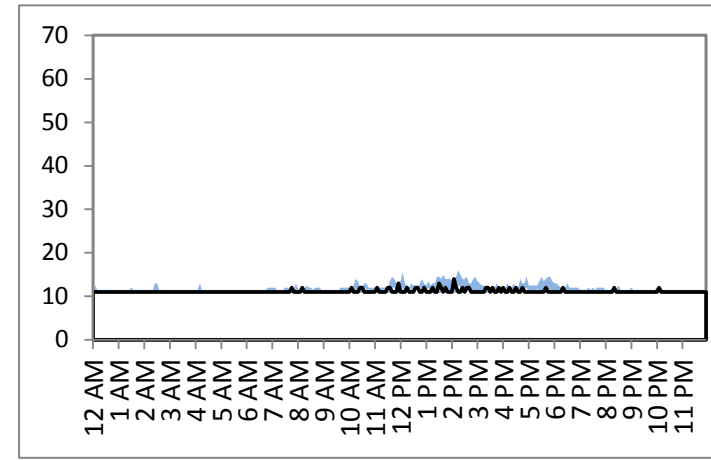
via I-90



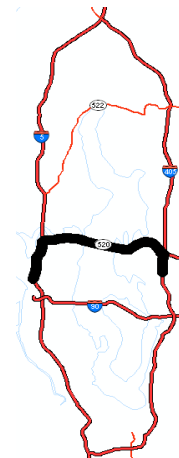
via SR 522



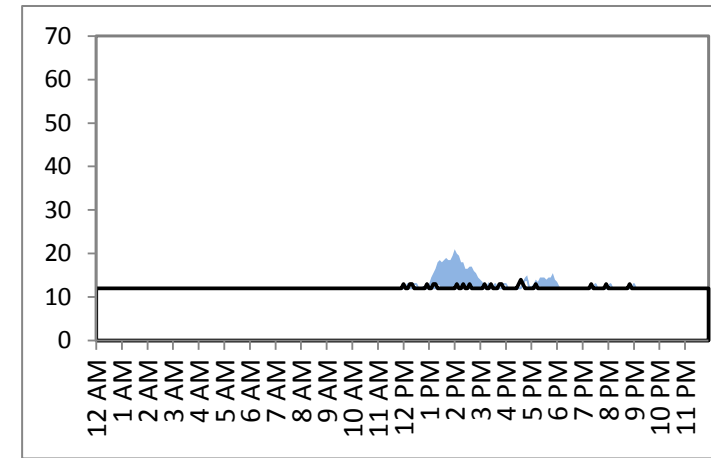
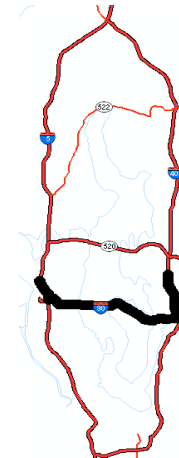
Bellevue to Seattle



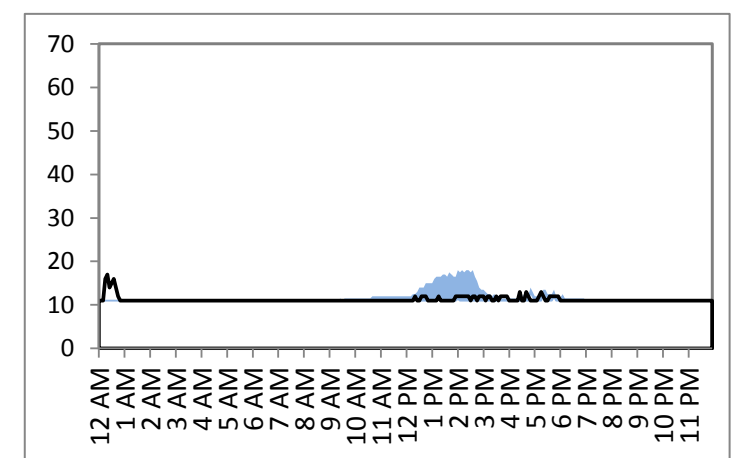
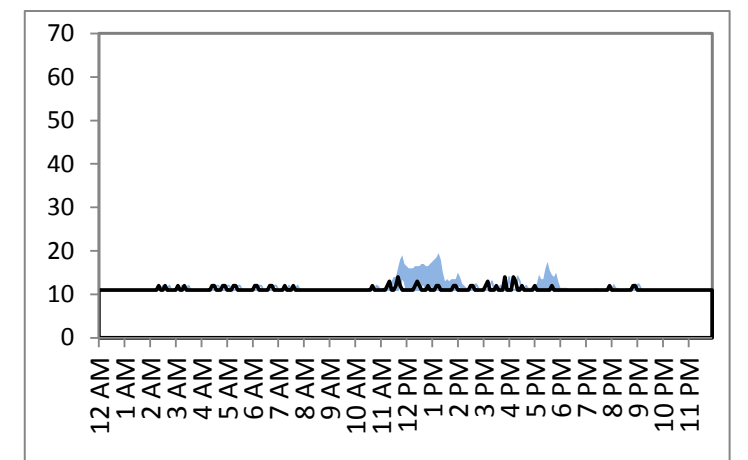
via 520



via I-90



Seattle to Bellevue



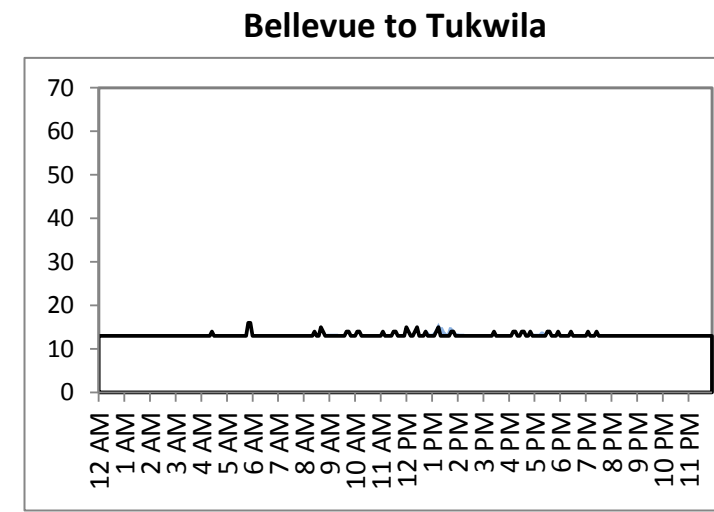
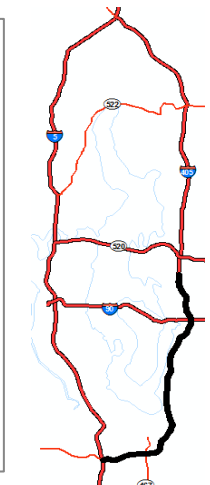
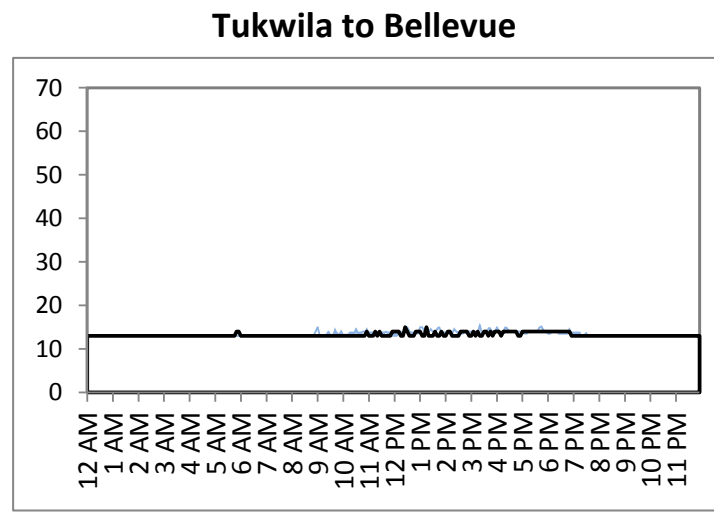
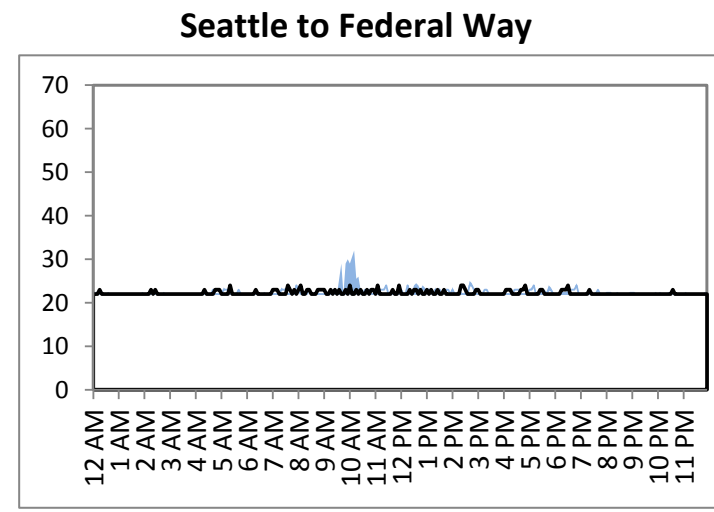
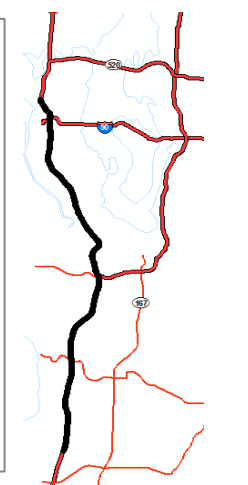
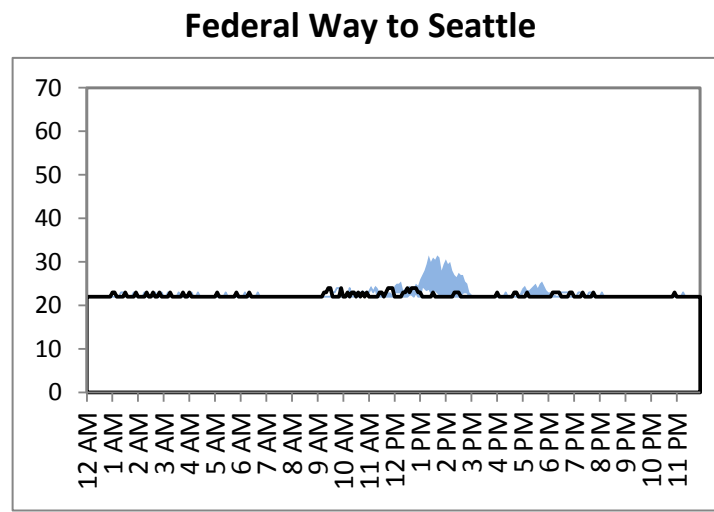
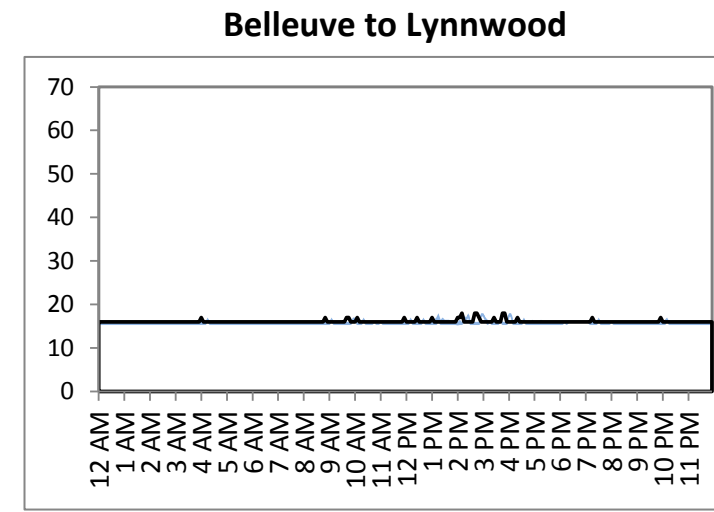
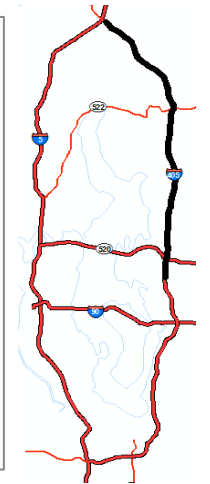
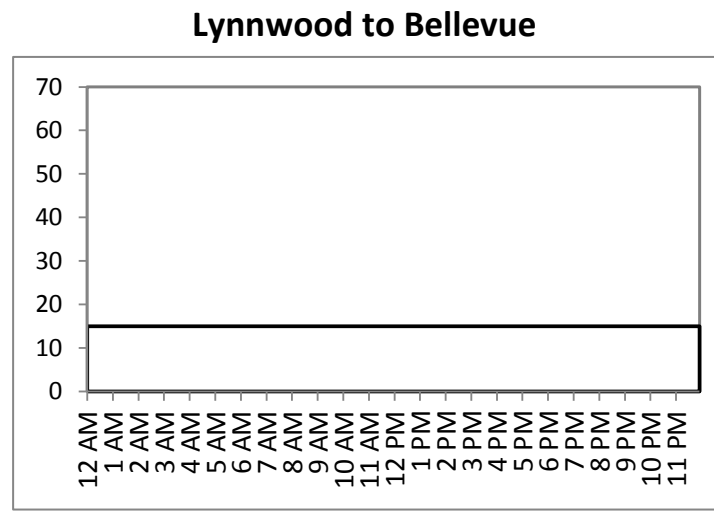
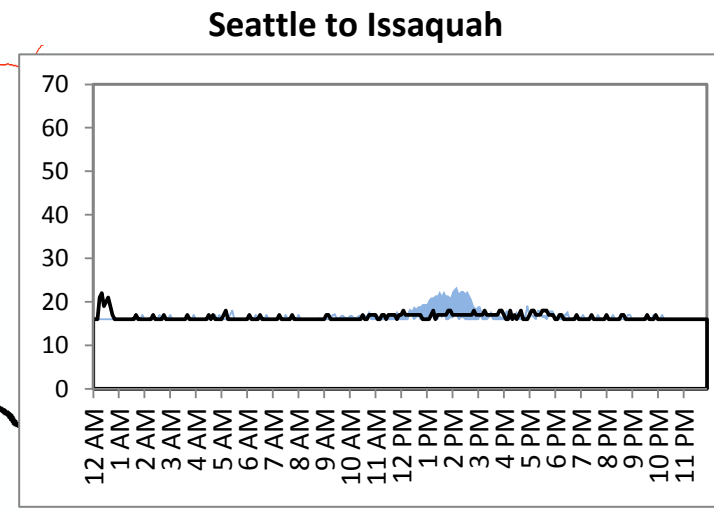
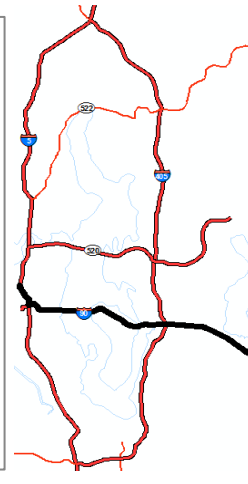
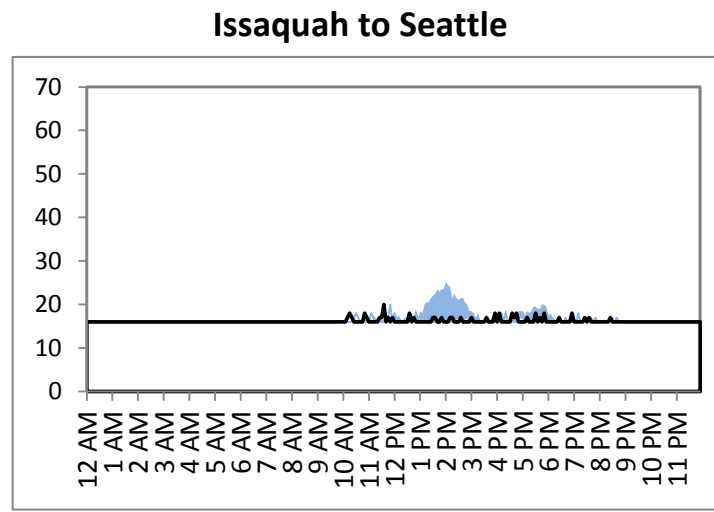
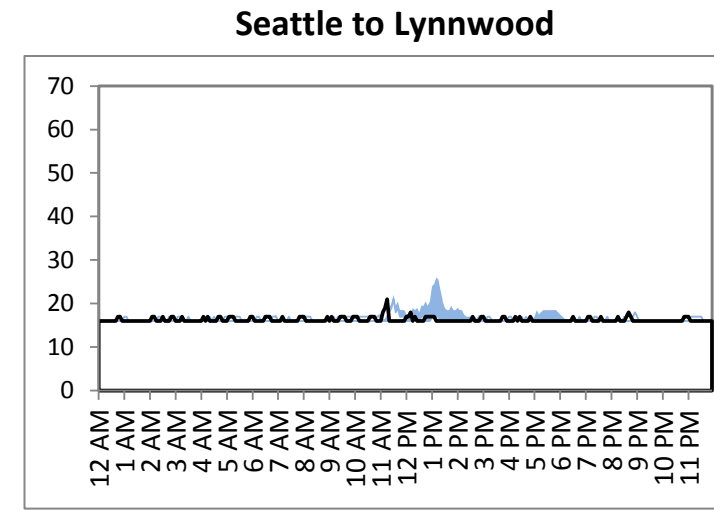
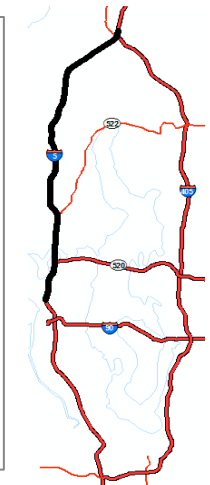
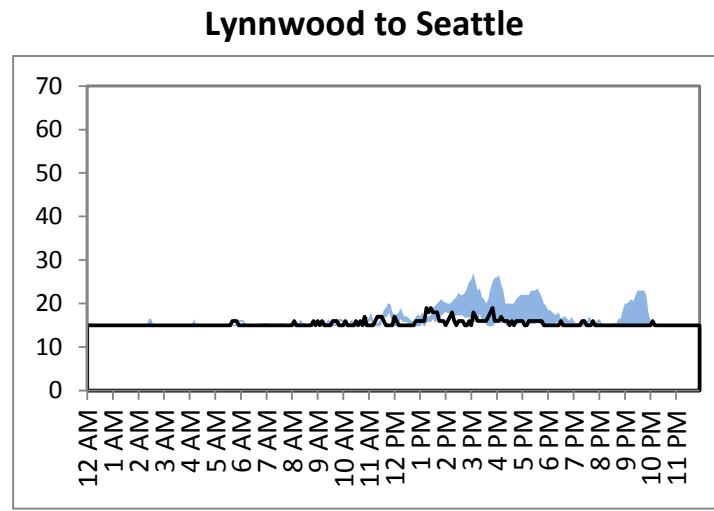
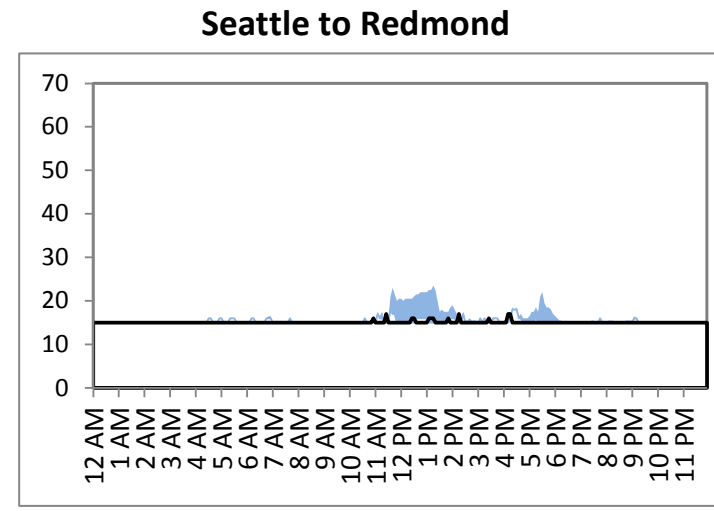
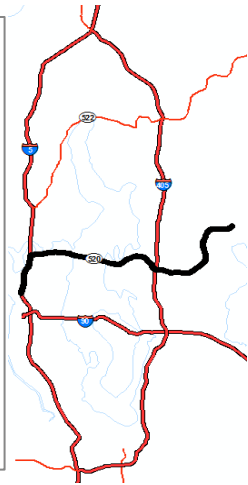
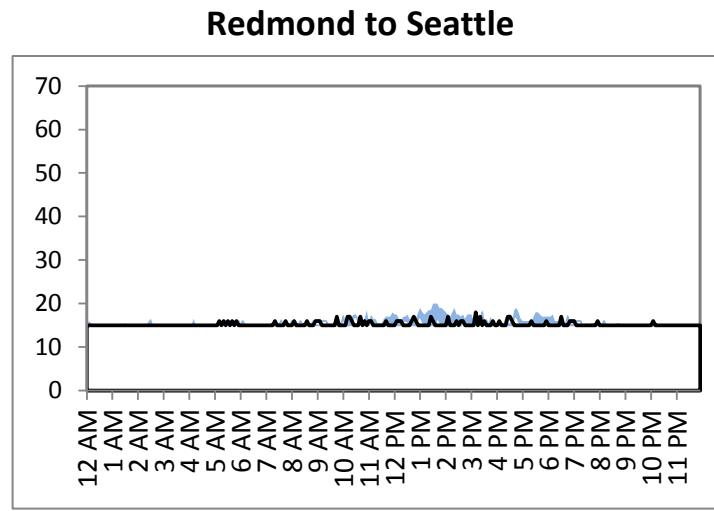
SR 520 Tolling: Traffic Monitoring

Travel Times

Sunday, January 8, 2012

— Sunday, January 8, 2012

■ Typical Range (10-90%ile, Sun, 10/29-11/18 & 11/26-12/16)



SR 520 Tolling: Traffic Monitoring

Congestion Contours

Sunday, January 8, 2012

- free flow
- moderate
- heavy
- stop and go



SR 520 Tolling: Traffic Monitoring

SR 520 Detail

Sunday, January 8, 2012

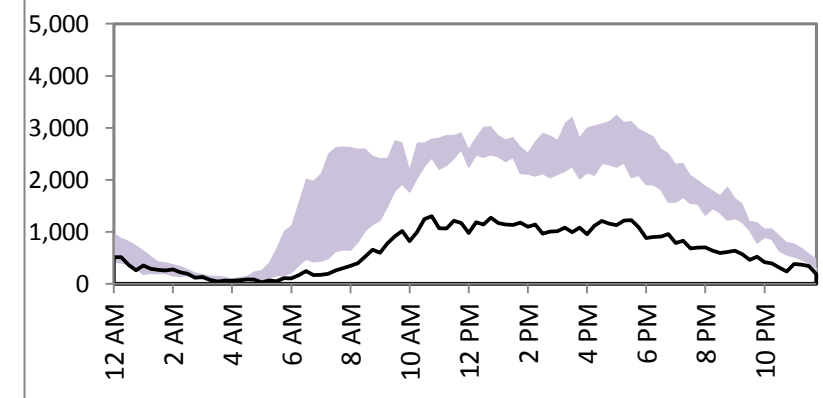
Mainline Volume



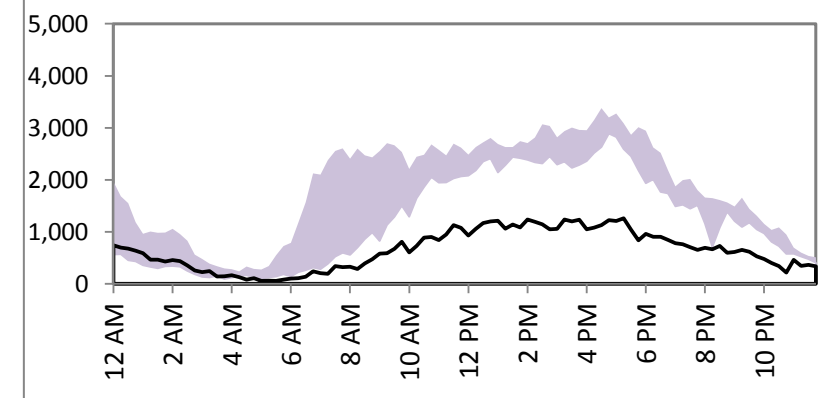
SR 520 Bridge

WB	EB
-55%	-54%
15,200	15,500
34,100	33,900

SR 520 WB Bridge



SR 520 EB Bridge



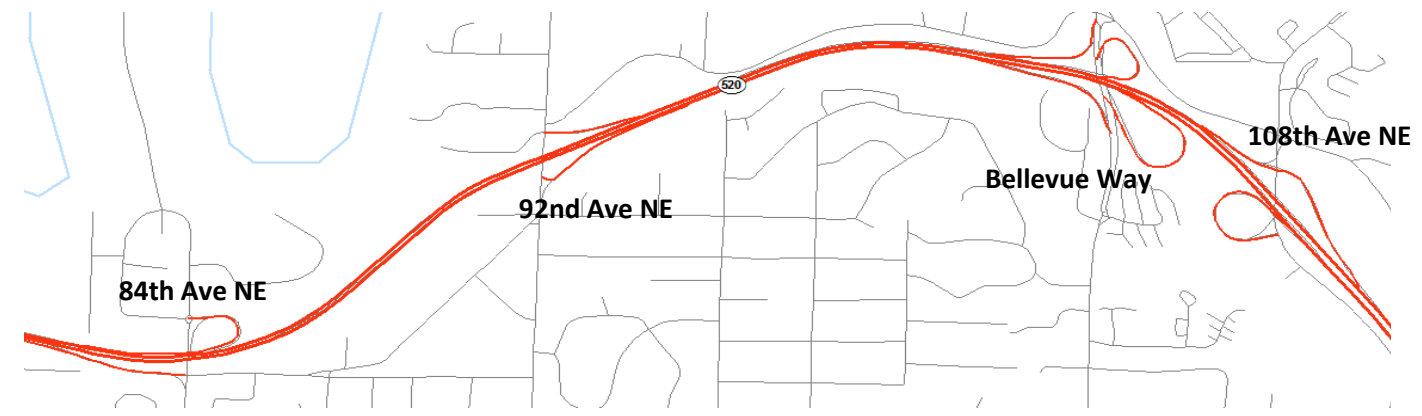
Ramp Volume

Montlake Blvd		Lk Wa Blvd
WB on ramp	WB exit	WB exit
10%	-50%	-47%
10,600	3,600	1,600
9,600	7,200	3,000

84th Ave NE	92nd Ave NE	Bellevue Way		108th Ave NE	
WB on ramp	WB exit	NB to WB on ramp	SB to WB on ramp	WB on ramp	WB exit
-48%	7%	-45%	-36%	-33%	2%
1,400	2,900	1,200	1,600	800	5,100
2,700	2,700	2,200	2,500	1,200	5,000



6%	-49%	-48%
10,300	4,600	1,300
9,700	9,000	2,500
EB exit	EB on ramp	EB on ramp
Montlake Blvd	Lk Wa Blvd	



-37%	3%	-41%	0%
1,700	3,100	3,300	4,600
2,700	3,000	5,600	4,600
EB exit	EB on ramp	EB exit	EB on ramp
84th Ave NE	92nd Ave NE	Bellevue Way	108th Ave NE

SR 520 Tolling: Traffic Monitoring

I-90 Detail

Sunday, January 8, 2012

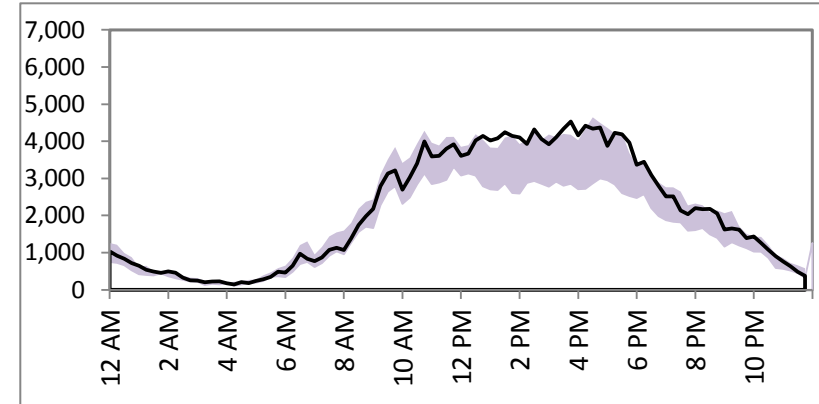
Mainline Volume



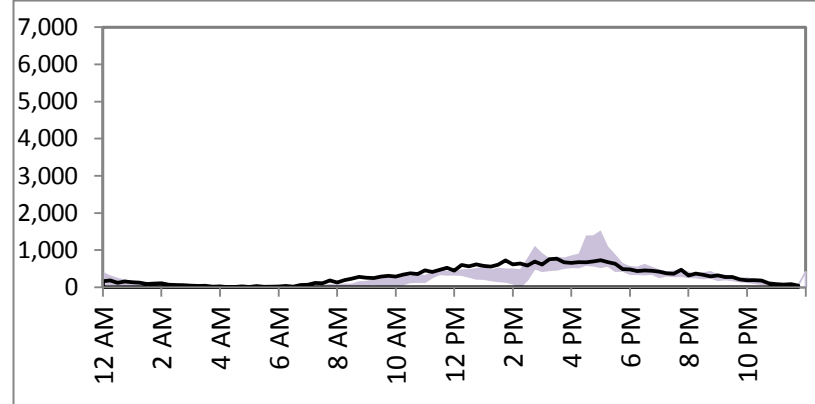
I-90 Bridge

WB	EB
23%	16%
51,300	50,500
41,600	43,600

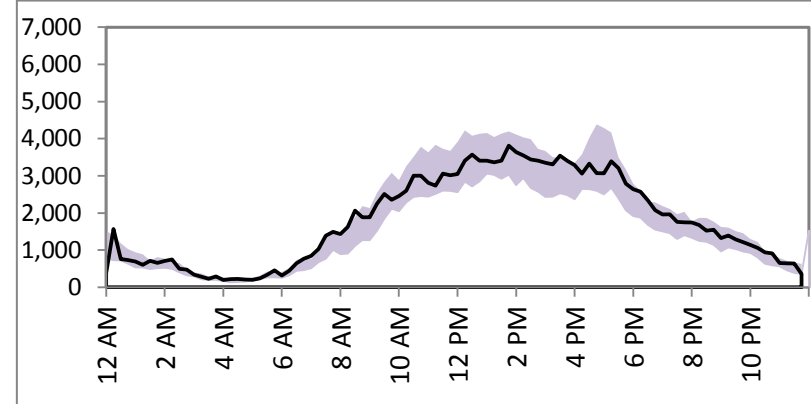
I-90 WB Bridge



I-90 REV Bridge



I-90 EB Bridge



Bellevue Way Ramp Volume

I-90 EB to Bellevue Way	Bellevue Way to I-90 WB
15%	16%
5,400	5,800
4,700	5,000

SR 520 Tolling: Traffic Monitoring

SR 522 Detail

Sunday, January 8, 2012

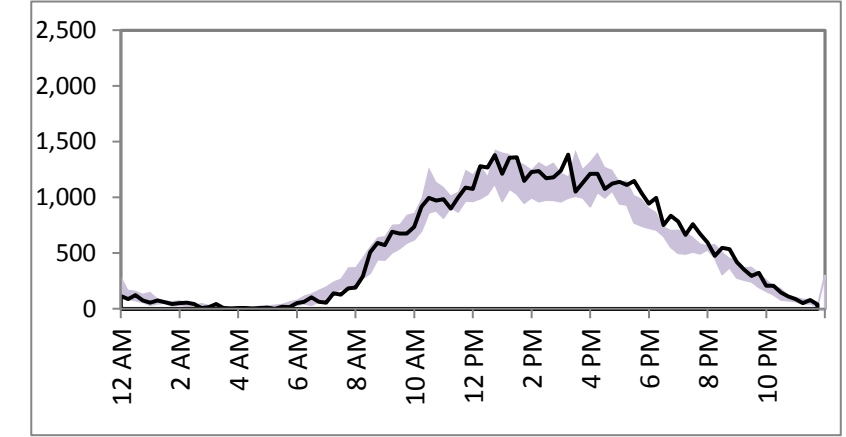
— Sunday, January 8, 2012
 ■ Typical Range (10-90%ile, Sun, 10/29-11/18 & 11/26-12/16)

Mainline Volume

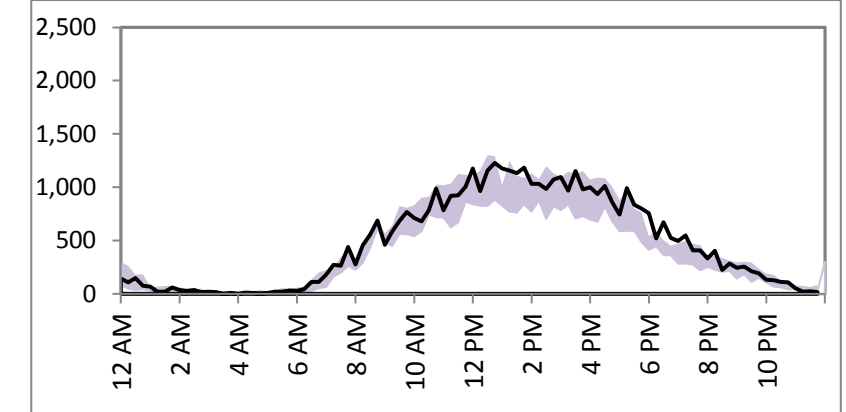


83rd PI NE	
WB	EB
7%	18%
13,300	11,300
12,400	9,600

SR 522 WB at 83rd Ave NE

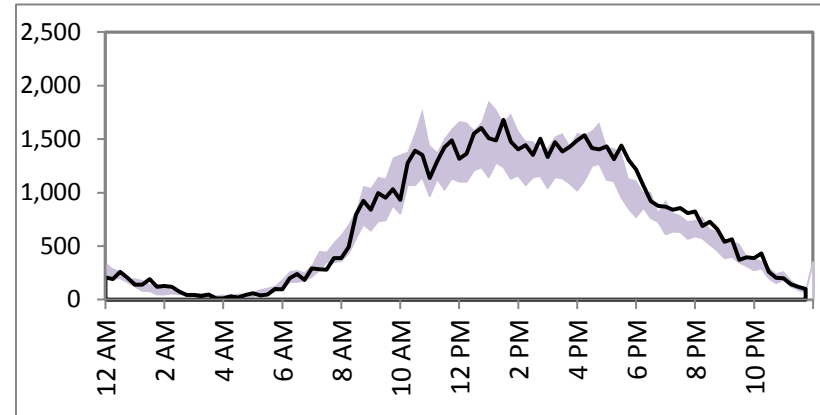


SR 522 EB at 83rd Ave NE



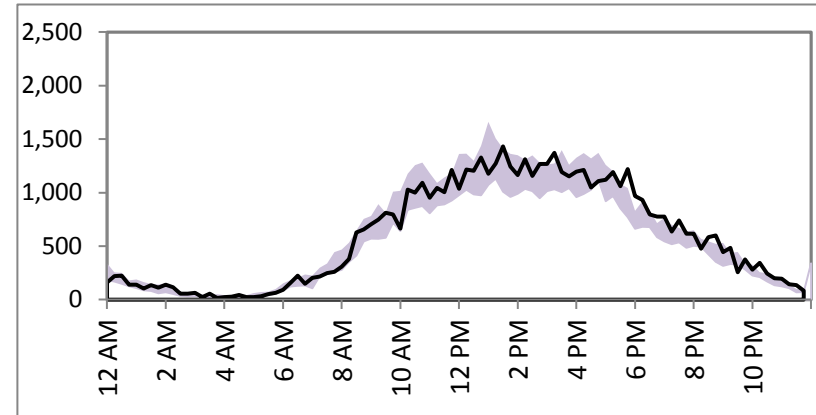
68th Ave NE	
WB	EB
11%	10%
17,400	12,500
15,700	11,400

SR 522 WB at 68th Ave NE



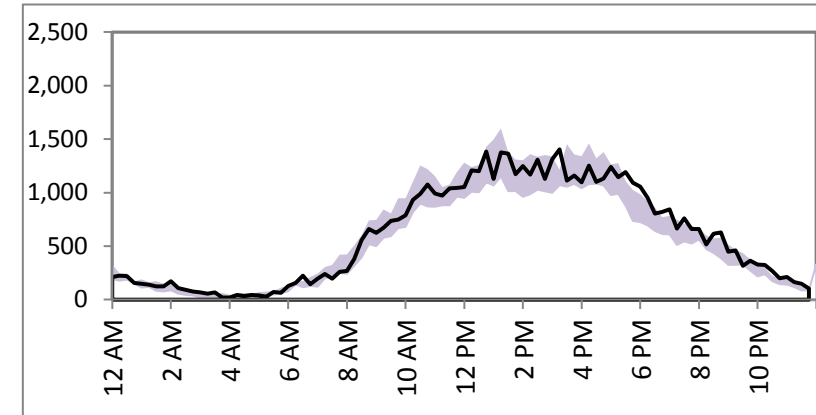
73rd Ave NE	
WB	EB
7%	11%
14,300	13,600
13,400	12,300

SR 522 WB at 73rd Ave NE



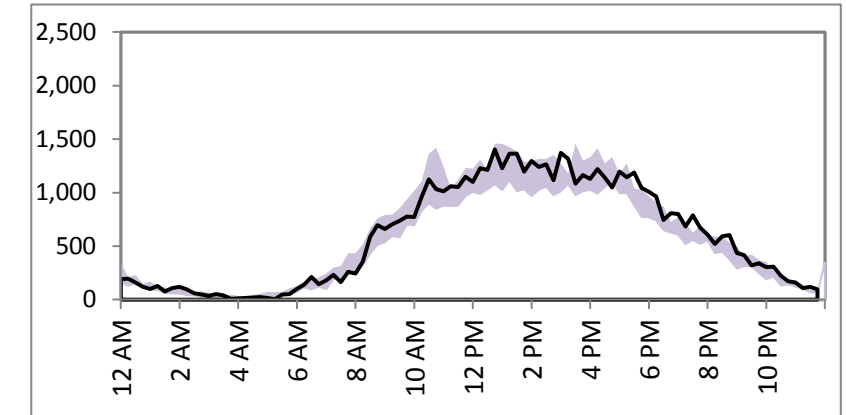
77th Ct NE	
WB	EB
5%	7%
14,400	13,400
13,700	12,500

SR 522 WB at 77th Ct NE

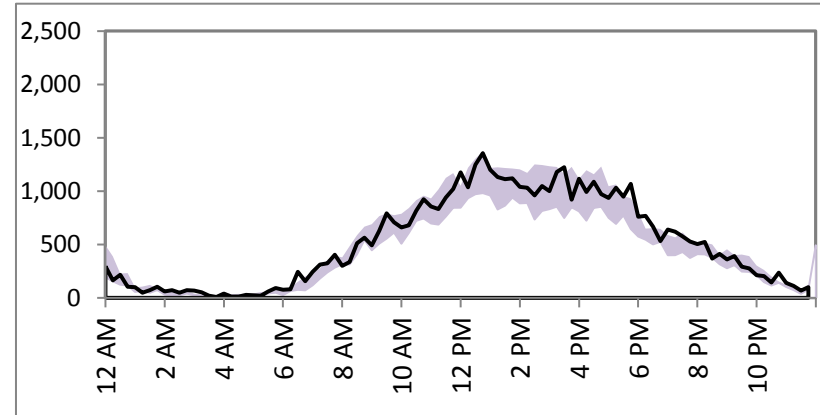


80th Ave NE	
WB	EB
5%	10%
14,200	12,700
13,500	11,500

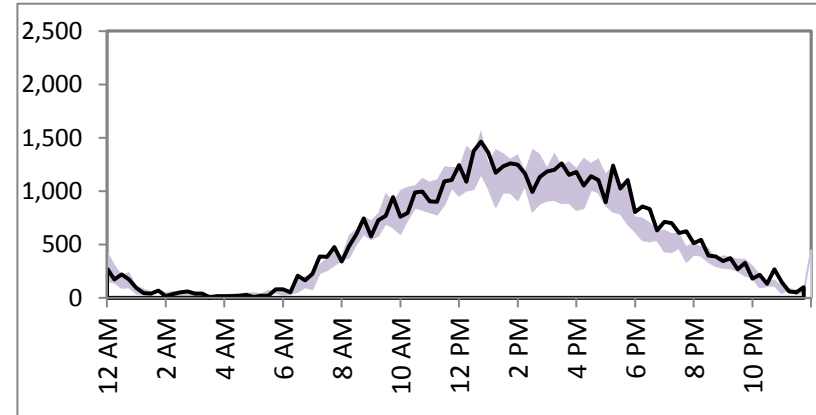
SR 522 WB at 80th Ave NE



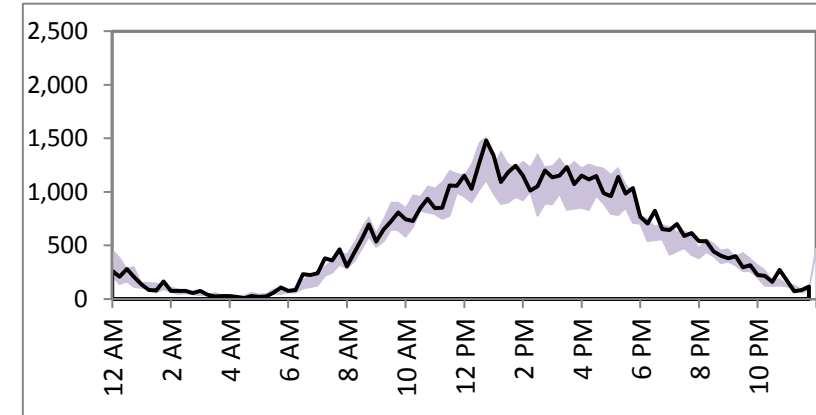
SR 522 EB at 68th Ave NE



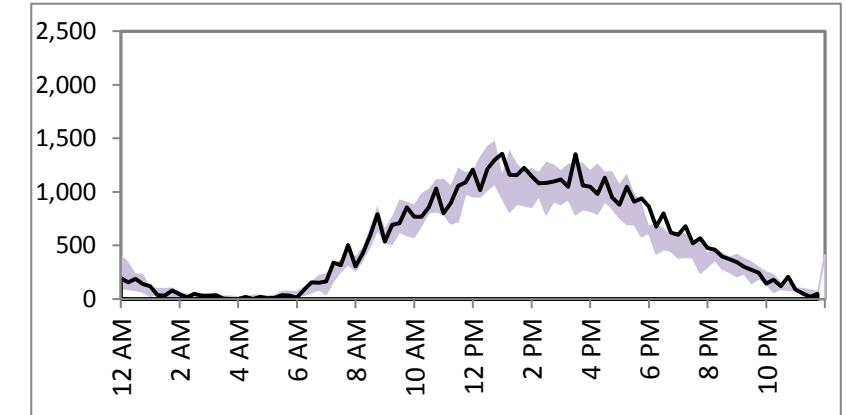
SR 522 EB at 73rd Ave NE



SR 522 EB at 77th Ct NE



SR 522 EB at 80th Ave NE

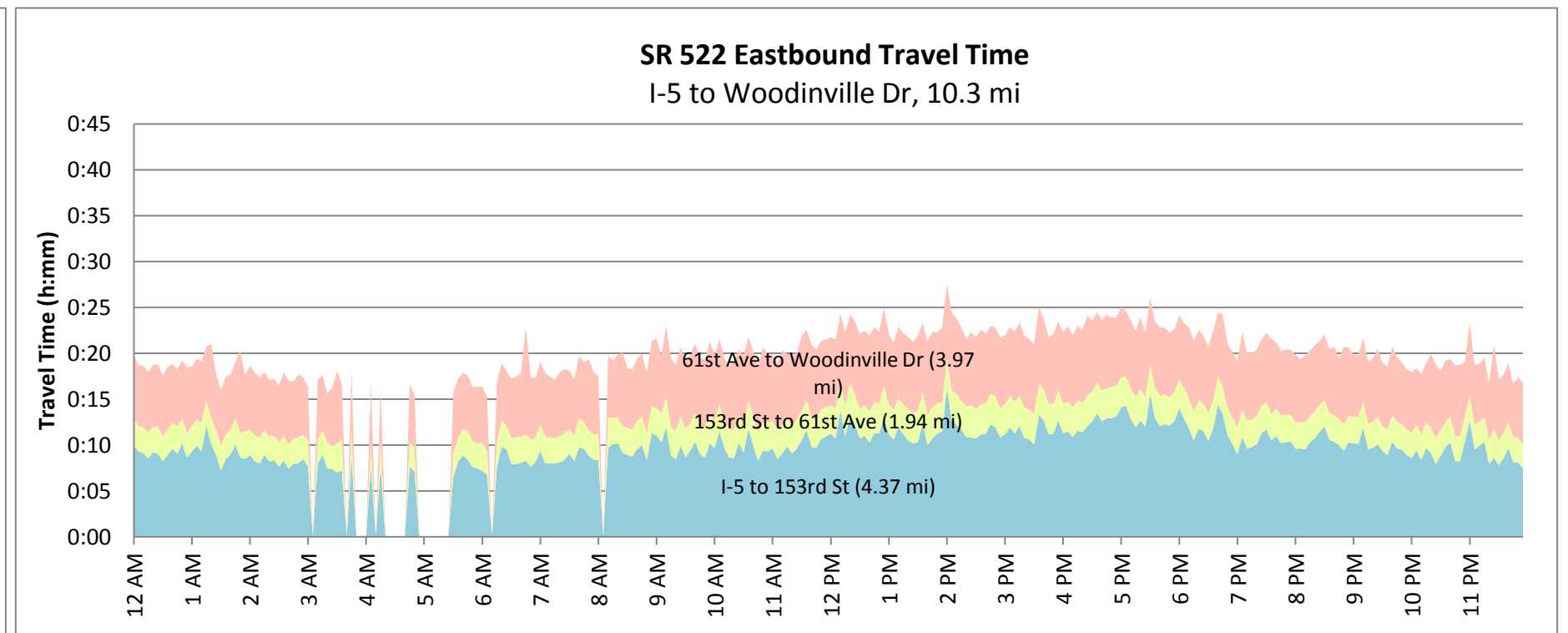
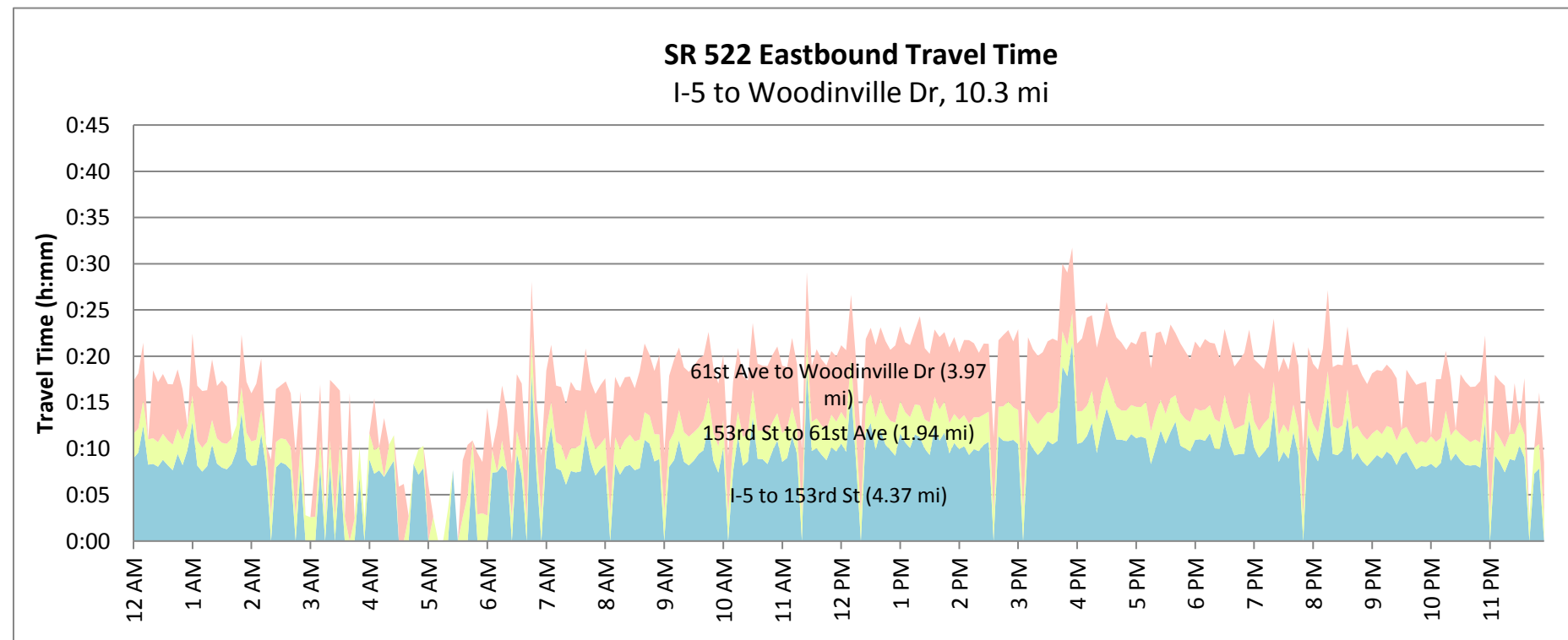
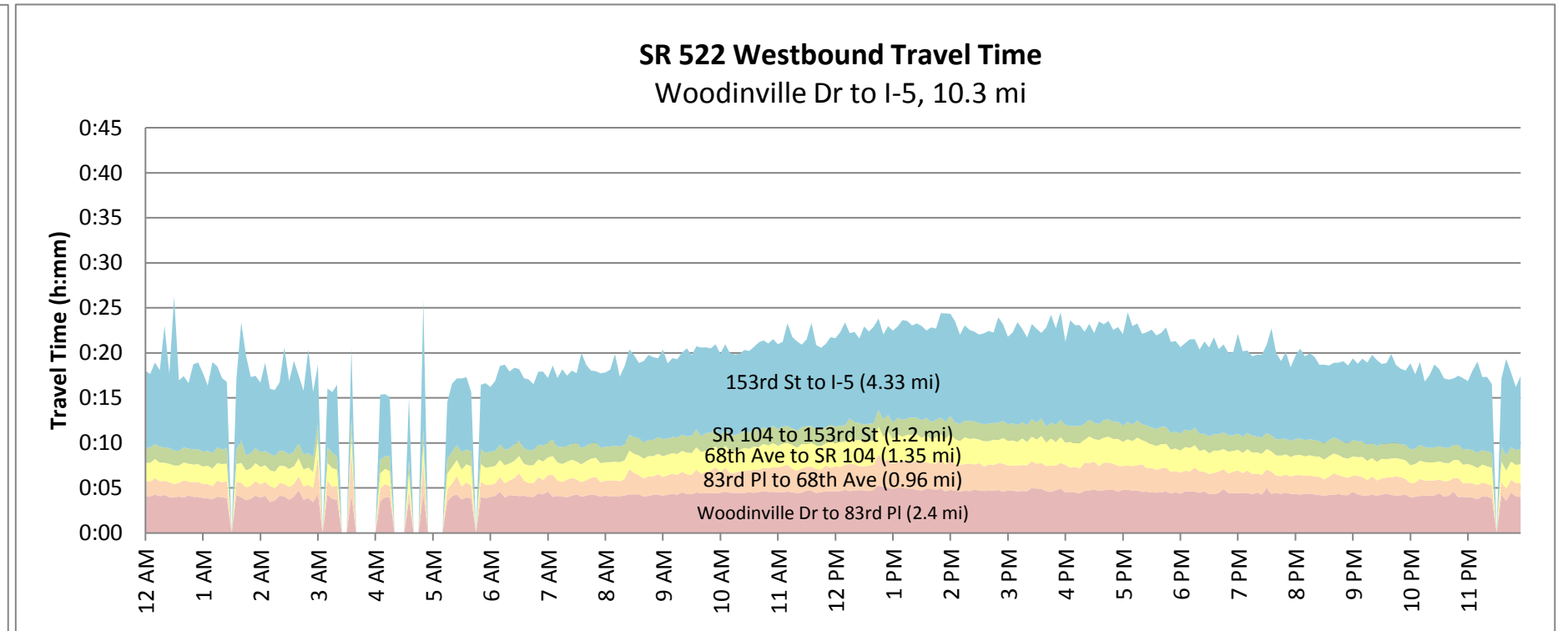
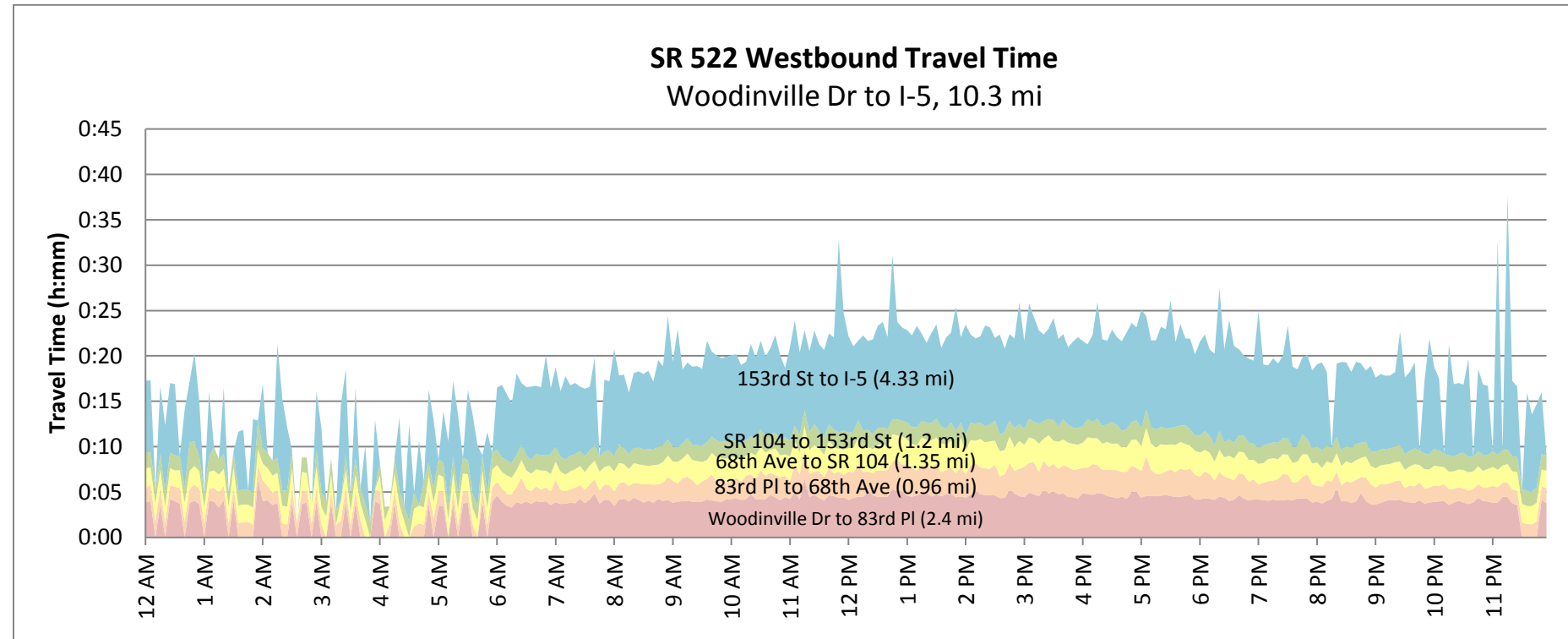


SR 520 Tolling: Traffic Monitoring

SR 522 Travel Times

Sunday, January 8, 2012

Sun, 10/29-11/18 & 11/26-12/16



Note: travel time data may be unavailable during time periods with low traffic volume