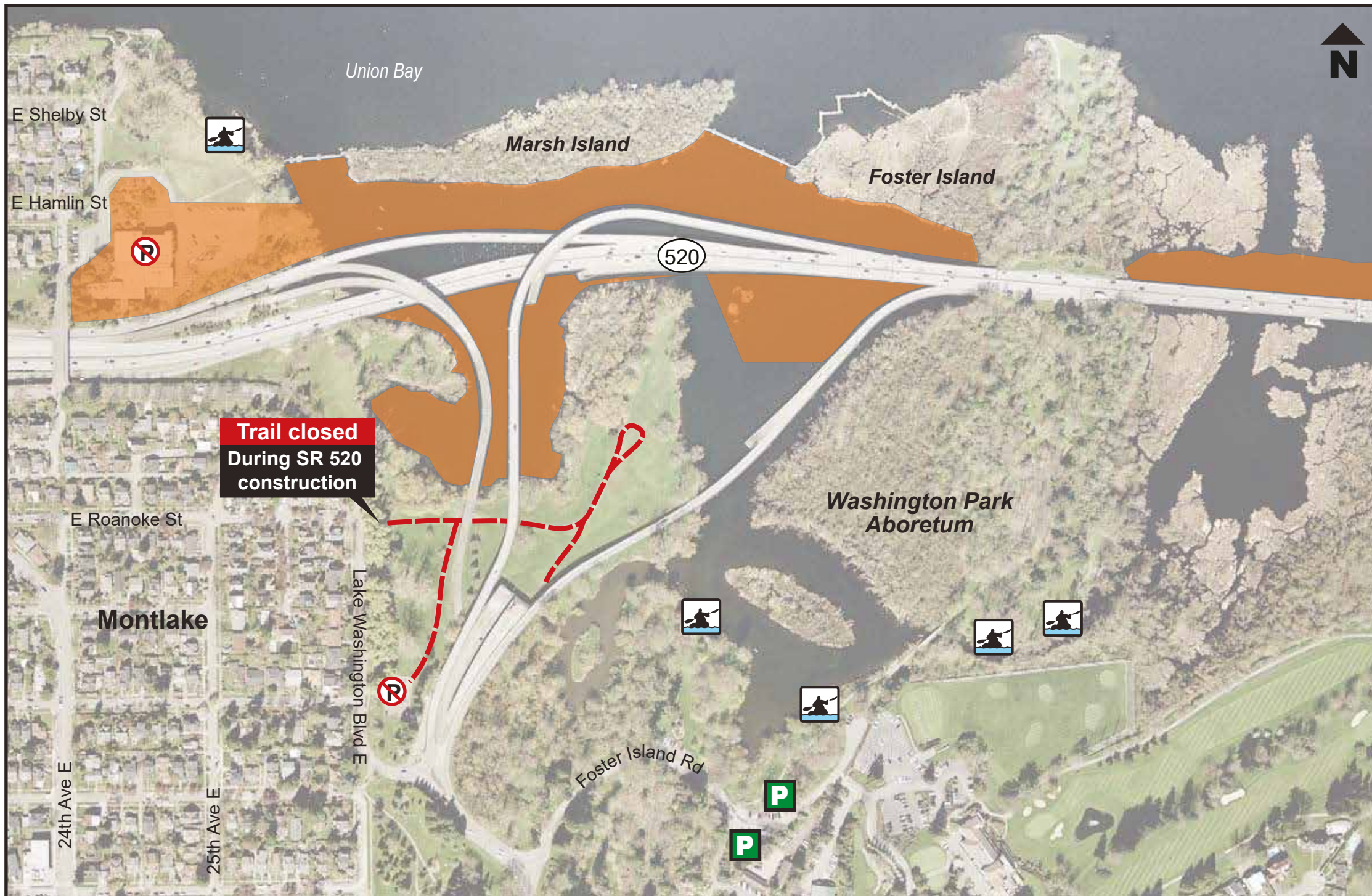


SR 520 BRIDGE REPLACEMENT AND HOV PROGRAM



Arboretum Waterfront Trail Closure



Legend:

- - - Trail closed
- Canoe/Kayak landing open
- Parking available at Arboretum
- Parking lot closed
- Active construction zones; no access

For more information:

Phone: 206-708-4657 (24-hour construction hotline)
Email: SR520Bridge@wsdot.wa.gov
Web: www.wsdot.wa.gov/projects/SR520Bridge/WABN/

Note: Construction schedules are weather dependent and subject to change. For more information as specific dates become available visit our What's Happening Now webpage.