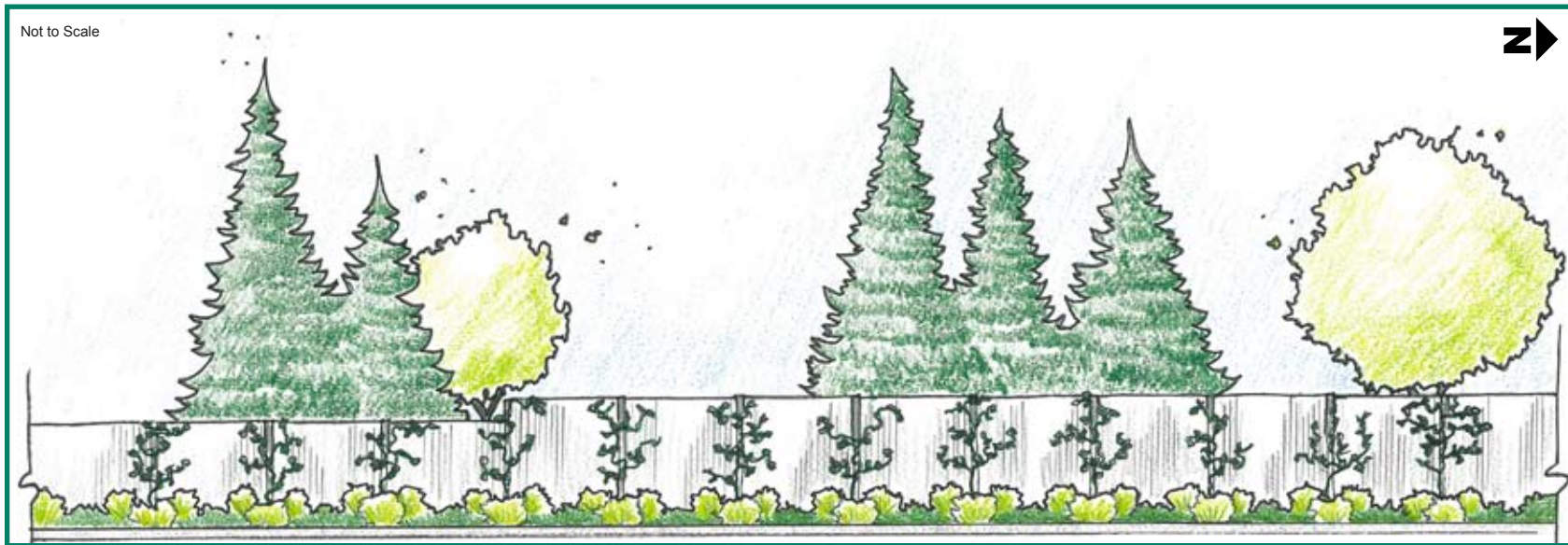


I-5 / 5th Avenue NE to NE 92nd Street Noise Wall Project



Wall 1-North **Preliminary Landscaping Concept C**

View: 1st Avenue NE looking west. Typical representation of existing plants and new plants aged three years.



Note: Trees shown on highway-side are examples of existing trees.

1. Vines



Boston Ivy

2. Medium Shrub



Gulf Stream Nandina

3. Small Shrub



Salal

As part of the project, crews will weed, water and replace failing plants on the neighborhood side of the noise wall for three years to help establish new plants. After three years, continued care of the landscaping will require community effort to ensure ongoing success.