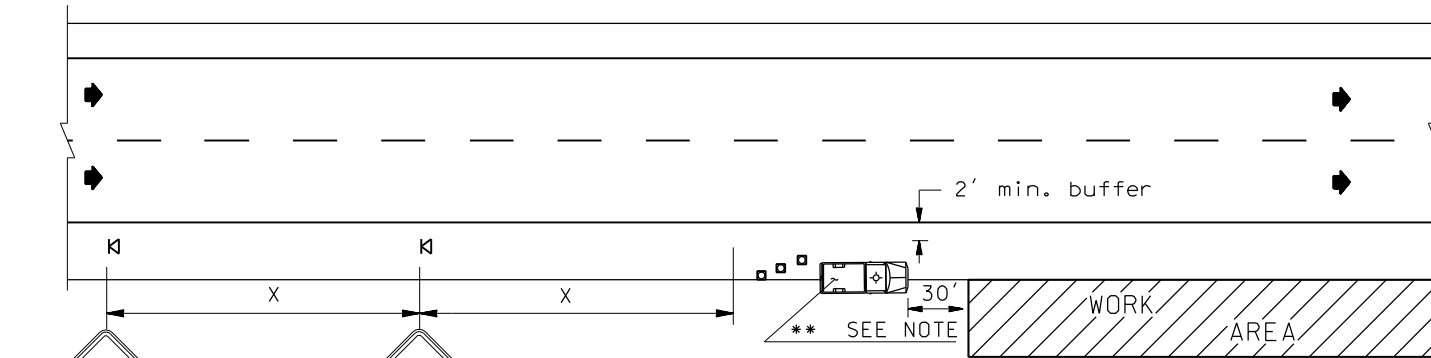


GENERAL NOTES

1. WORK BEHIND BARRIERS, MORE THAN 2FT BEYOND A CURB OR BEYOND 15 FT FROM THE SHOULDER DO NOT REQUIRE WARNING SIGNS AND CONES IF THE WORK VEHICLE WARNING BEACON IS VISIBLE.
2. NO WORK ON HIGH SPEED MEDIAN AREAS IS ALLOWED UNLESS BOTH MEDIAN SHOULDERS ARE CLOSED AND SUFFICIENT SHOULDER WIDTH (8FT) IS AVAILABLE TO PARK THE WORK VEHICLE. (SEE MEDIAN SHOULDER CLOSURE PLAN)
3. LITTER CREW PERSONNEL ARE TO REMAIN OFF THE PAVED SHOULDERS EXCEPT TO LOAD/UNLOAD VEHICLES.
4. RECOMMEND A SPOTTER WHEN POSSIBLE.
5. REFER TO ADOPT A HIGHWAY GUIDANCE FOR ADDITIONAL INFORMATION.
6. TWO MILE LIMIT ON WORK AREA.



** VEHICLE IS REQUIRED WHEN WORK OPERATION IS WITHIN 15 FT FROM SHOULDER VEHICLE IS ALLOWED TO SHADOW CREW AS LONG AS THE SHOULDER WIDTH IS ADEQUATE TO MAINTAIN THE MINIMUM 2FT BUFFER SPACE TO TRAFFIC. (VEHICLE IS OPTIONAL FOR WORK OPERATIONS LESS THAN ONE HOUR)

W20-1
48" x 48"
B/O

* W21-14
48" x 48"
B/O

* OR OTHER APPLICABLE LITTER CREW SIGN

LEGEND

⊠ SIGN LOCATION

□ □ □ CHANNELIZING DEVICES - 28" MIN HEIGHT (OPTIONAL)
(ONLY REQUIRED WHEN VEHICLE IS STATIONARY FOR 5 MINUTES OR LONGER, 40' MAX. SPACING WHEN USED)

 CREW VEHICLE W/ LIGHT

SIGN SPACING = X (feet)		
Freeways & Expressways	55/70 MPH	1500'+-
Rural Highways	60/65 MPH	800'+-
Rural Roads	45/55 MPH	500'+-
ALL SIGNS ARE 48" x 48" BLACK ON ORANGE UNLESS OTHERWISE DESIGNATED.		

All spacing may be adjusted to accommodate interchange ramps, at-grade intersections, and driveways.

**LITTER CREW TRAFFIC CONTROL PLAN
SHOULDER CLOSURE - HIGH SPEED ROADWAY**

(REVISED FEBRUARY 2008)