

APPENDIX D

Select Valley Cross-Sections

This page intentionally left blank.

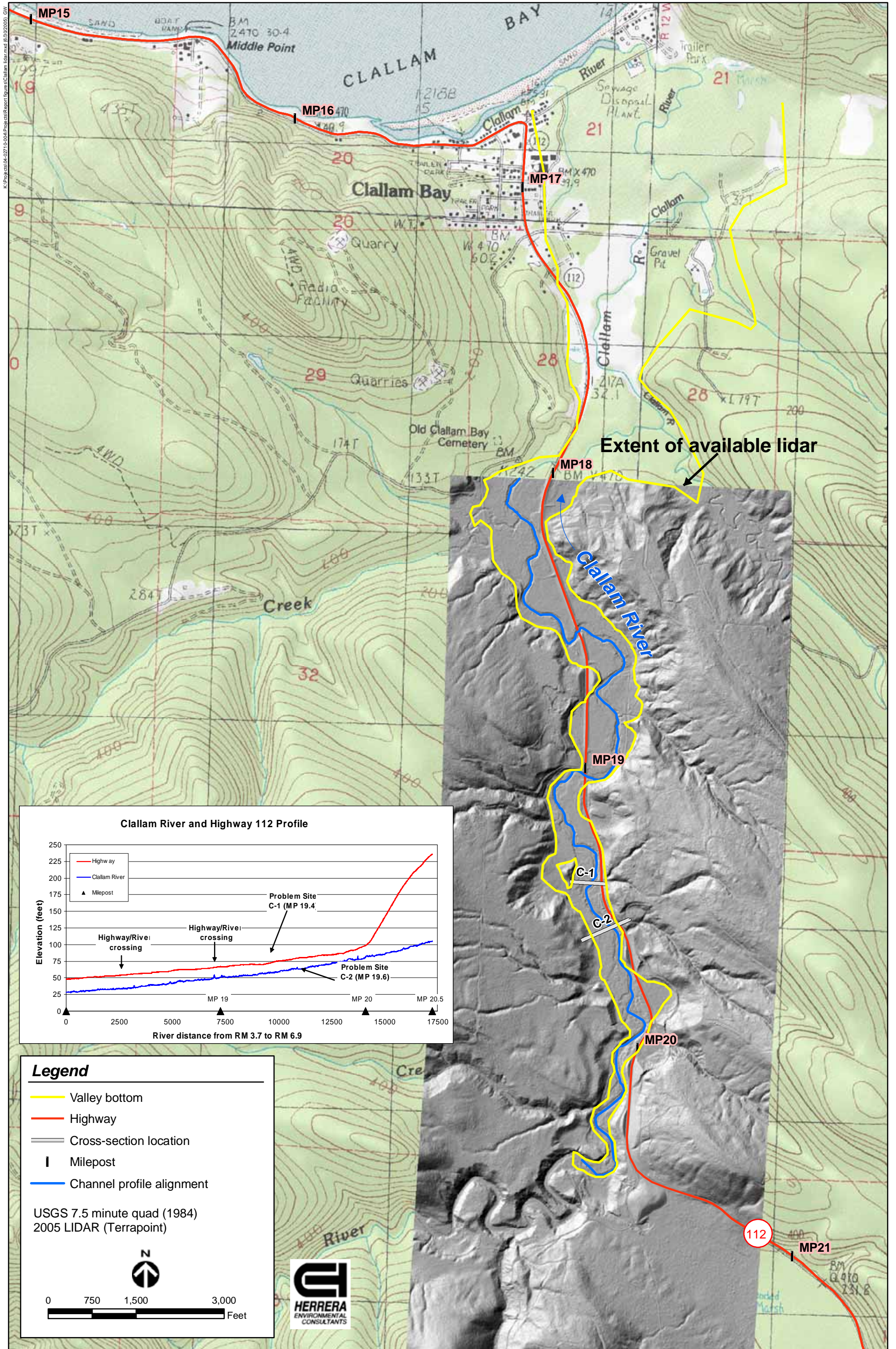


Figure D-1. Clallm River 2005 lidar hillshade, river and Highway 112 alignments and profiles, and cross-section locations

This page intentionally left blank

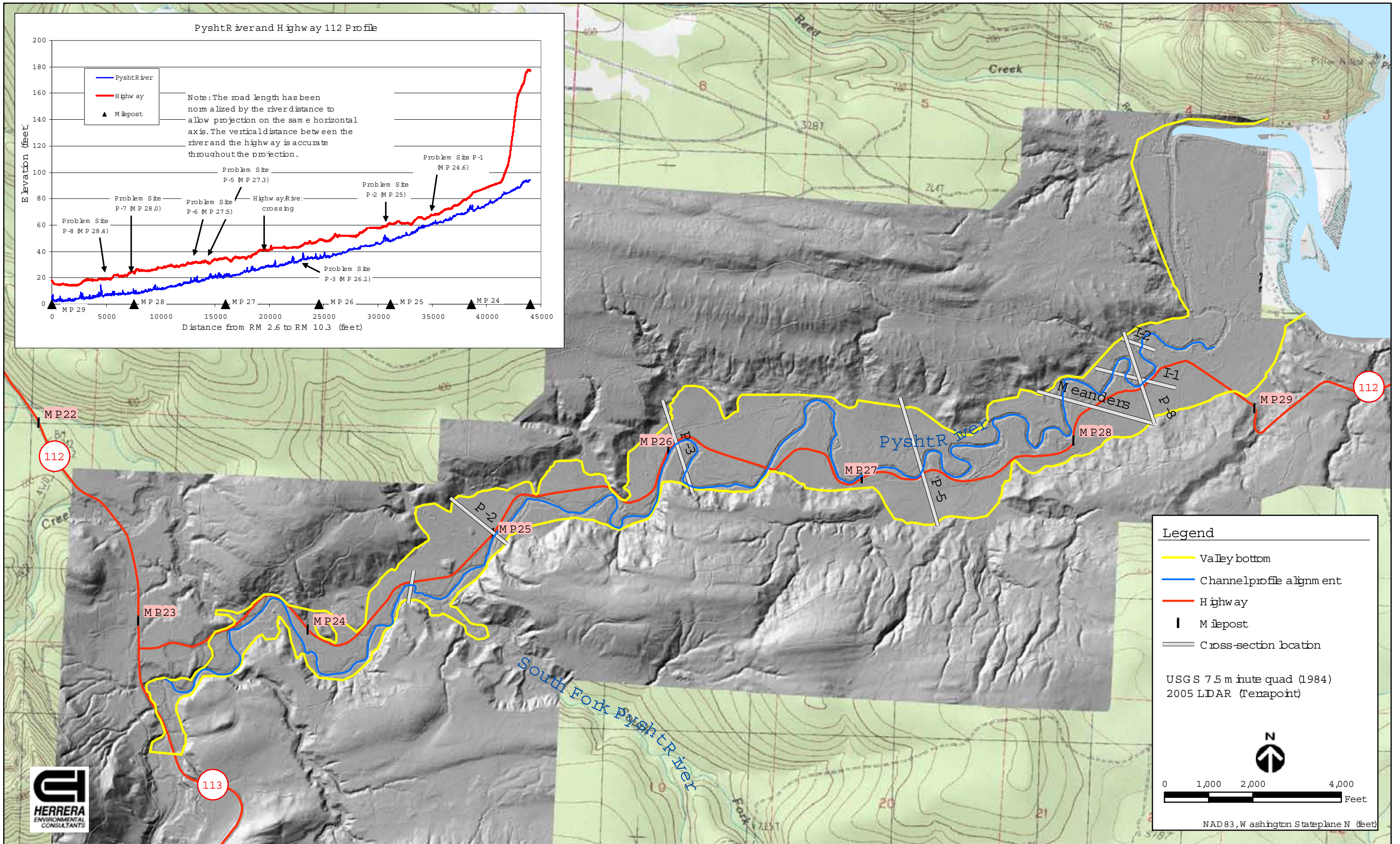
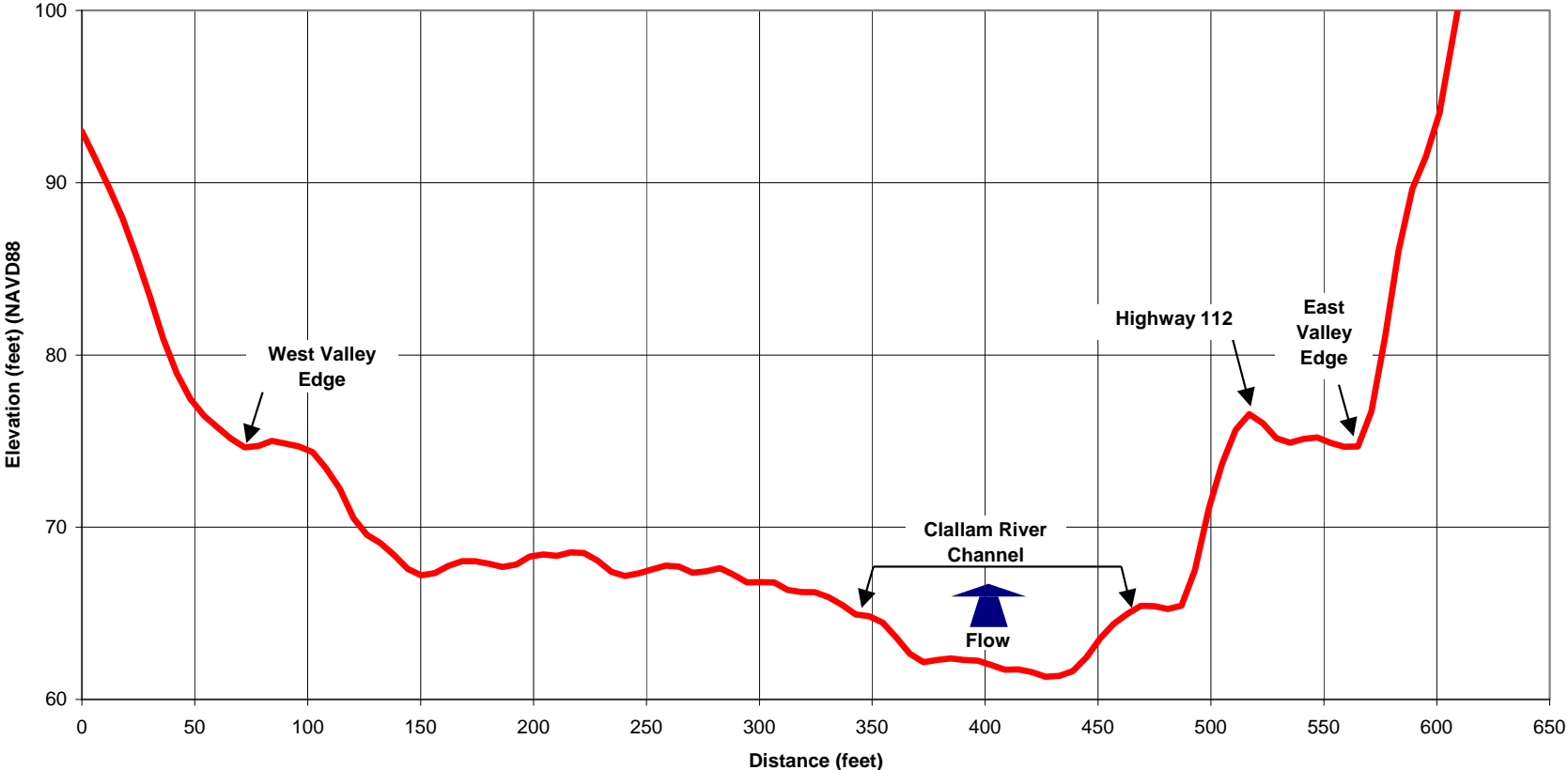


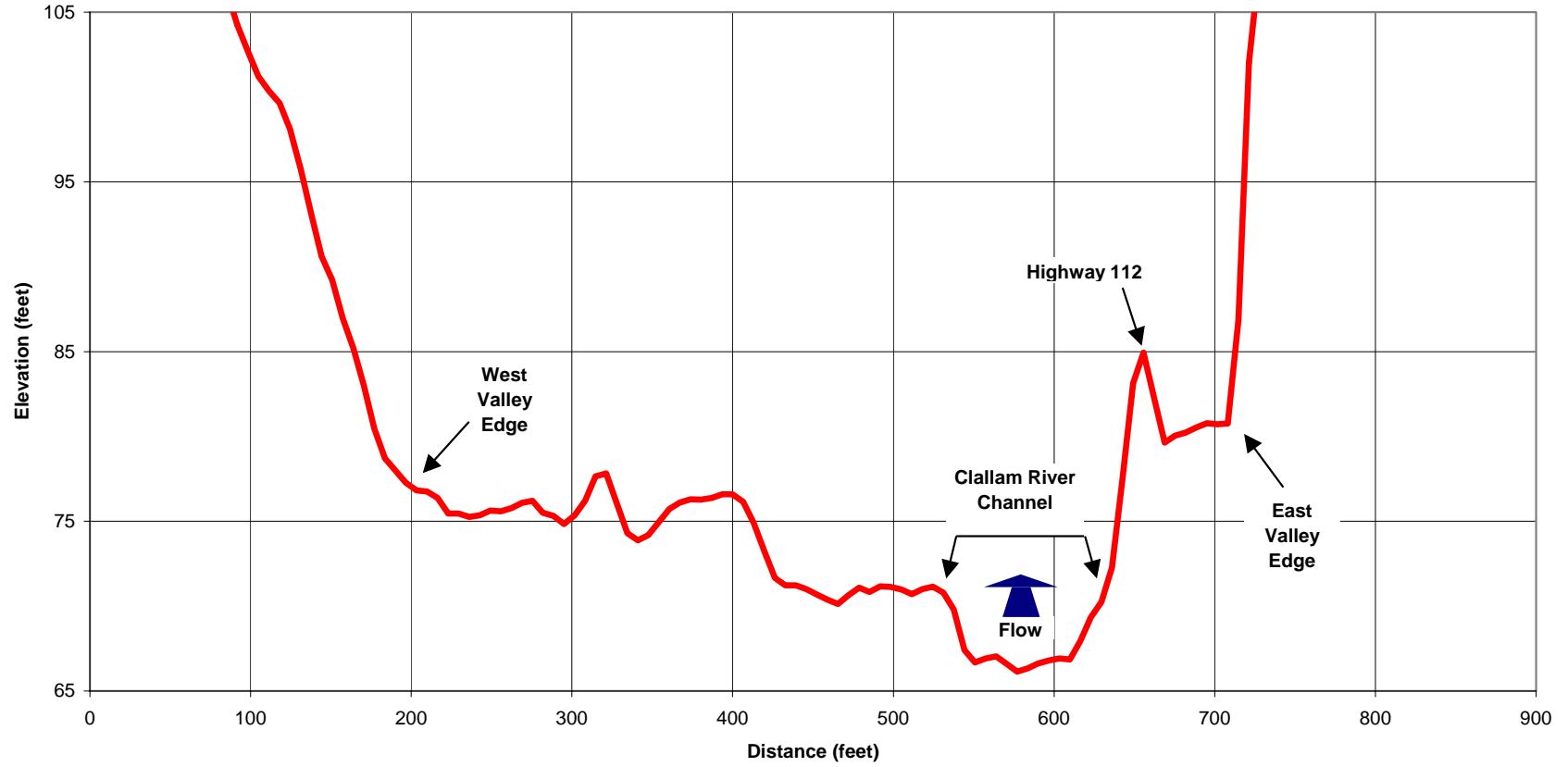
Figure D-2. Pysht River 2005 lidar DEM hillshade, river and Highway 112 alignments and profiles, and cross-section locations.

This page intentionally left blank

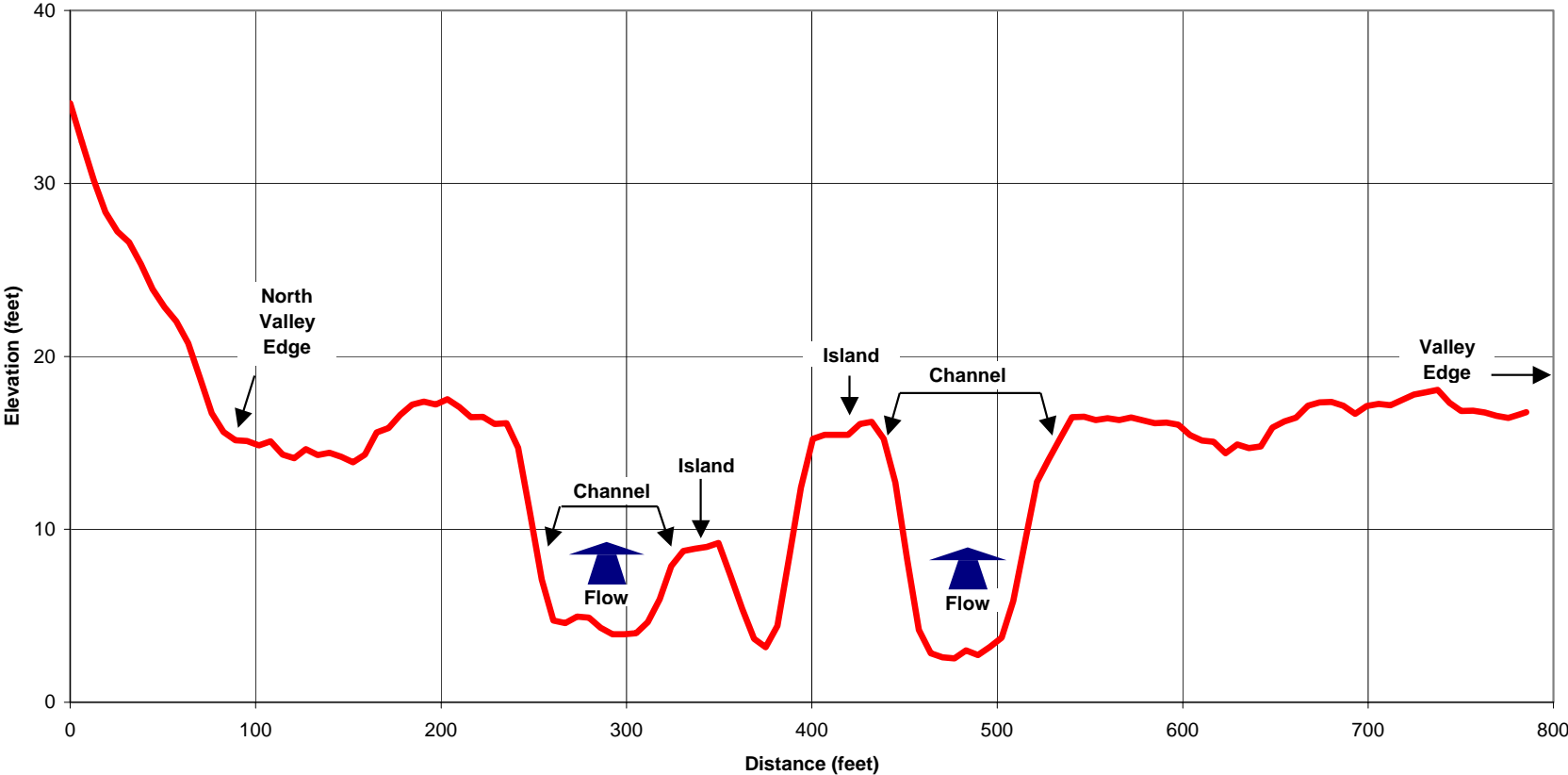
Problem Site C-1, Clallam River



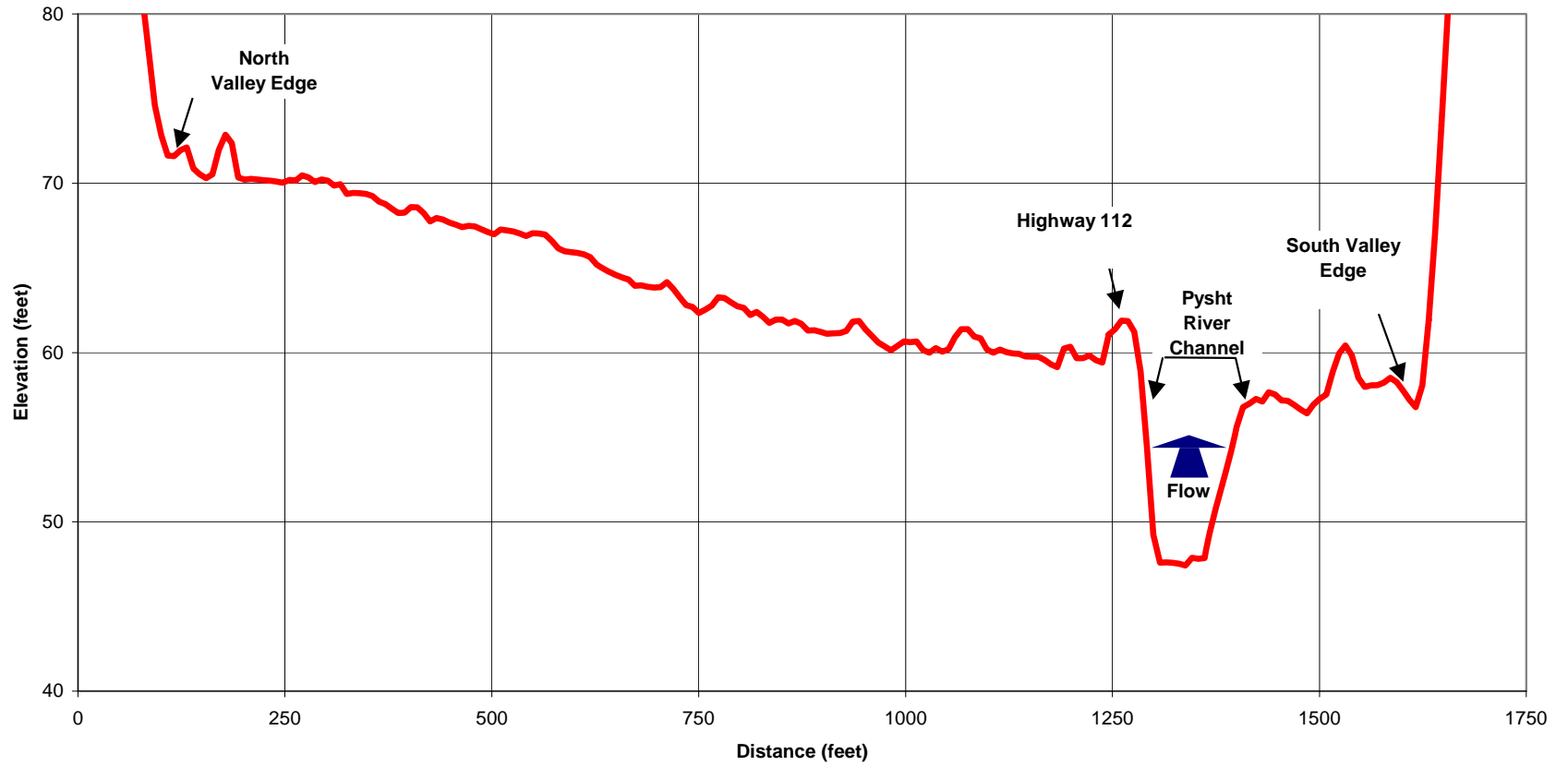
Problem Site C-2, Clallam River



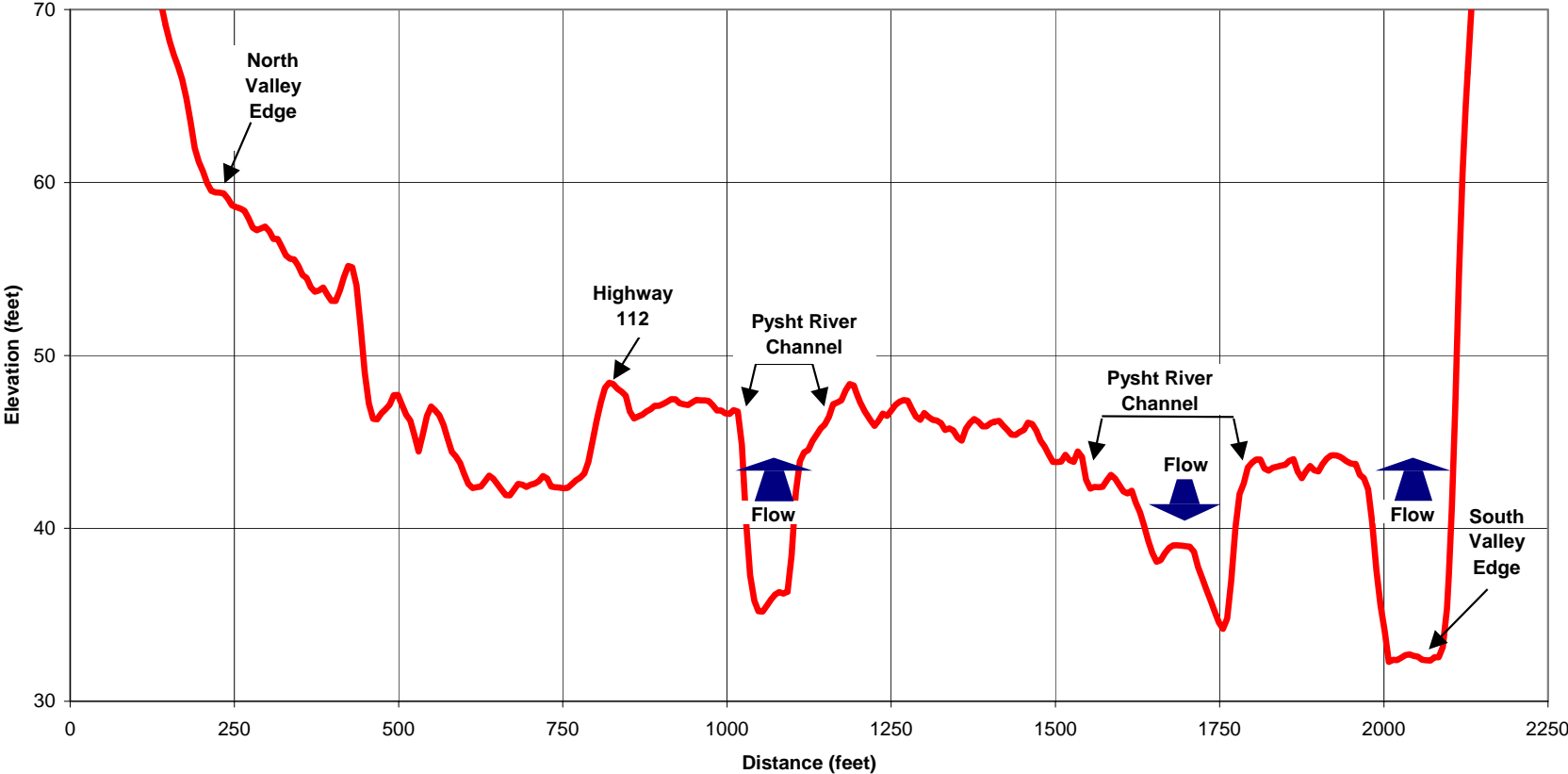
I-2 Cross-section, Pysht River



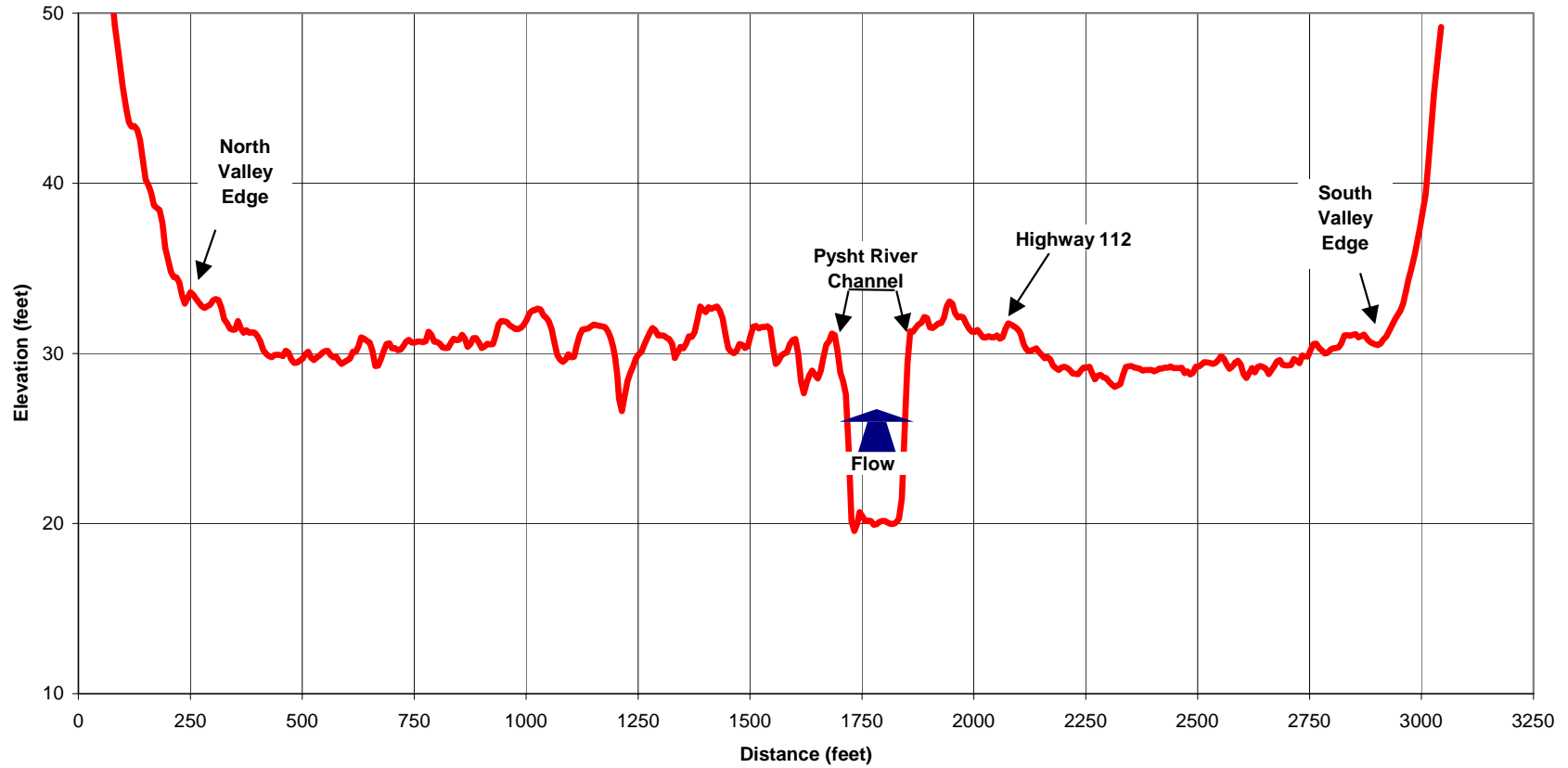
Problem Site P-2, Pysht River



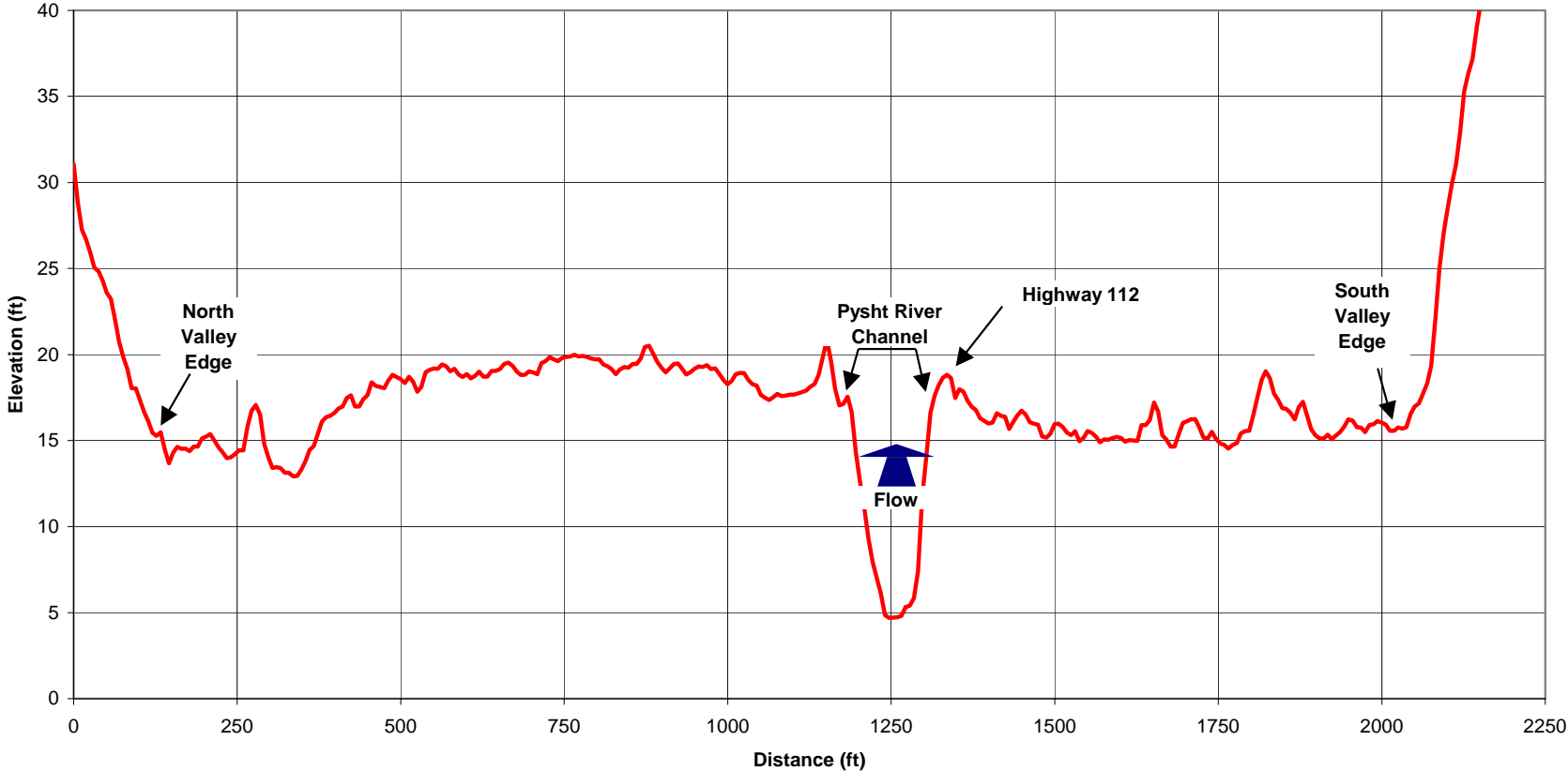
Problem Site P-3, Pysht River



Problem Site P-5, Pysht River



Problem Site P-8, Pysht River



This page intentionally left blank