

# Maintenance Accountability Process

## Activity Service Level Targets and Service Levels Delivered

### Olympic Region - CY 2006

Activity	1.0		1.9		2.0		2.9		3.0		3.9		4.0		4.9		5.0		5.9	
	+	A	-		+	B	-		+	C	-		+	D	-		+	F	-	
<b>Group - 1 Roadway Maintenance and Operations</b>																				
1A1 Pavement Patching & Repair*			✓	⊙																
1A2 Crack Sealing*						✓					⊙									
1A3 Shoulder Maintenance					✓				⊙											
1A4 Sweeping and Cleaning					✓	⊙														
1B1 Safety Patrol									⊙					✓						
<b>Group - 2 Drainage Maintenance and Slope Repair</b>																				
2A1 Maintain Ditches			✓	⊙																
2A2 Maintain Culverts									✓	⊙										
2A3 Maintain Catch Basins and Inlets			✓	⊙																
2A4 Maintain Detention/Retention Basins										✓	⊙									
2A5 Slope Repair		✓				⊙														
<b>Group - 3 Roadside and Vegetation Management</b>																				
3A1 Litter Pickup														⊙	✓					
3A2 Noxious Weed Control	✓					⊙														
3A3 Nuisance Vegetation Control						✓	⊙													
3A4 Control of Vegetation Obstructions					✓		⊙													
3A5 Landscape Maintenance											⊙		✓							
<b>Group - 4 Bridge and Urban Tunnel Maintenance and Operations</b>																				
4A1 Bridge Deck Repair		✓					⊙													
4A2 Structural Bridge Repair										⊙				✓						
4A3 Bridge Cleaning						✓				⊙										
4B1 Movable and Floating Bridge Operations		✓			⊙															
<b>Group - 5 Snow and Ice Control Operations</b>																				
5B1 Snow and Ice Control Operations		✓							⊙											
<b>Group - 6 Traffic Control Maintenance and Operations</b>																				
6A1 Pavement Striping Maintenance***									✓	⊙										
6A2 Raised/Depressed Pavement Marker Maint.						⊙	✓													
6A3 Pavement Marking Maintenance							✓				⊙									
6A4 Regulatory Sign Maintenance		✓							⊙											
6A5 Guide Sign Maintenance		✓					⊙													
6A6 Guidepost Maintenance									✓		⊙									
6A7 Guardrail Maintenance		✓	⊙																	
6B1 Traffic Signal Systems									⊙	✓										
6B2 Highway Lighting Systems						⊙				✓										
6B3 Intelligent Transportation Systems							⊙			✓										
<b>Group - 7 Rest Area Operations</b>																				
7B1 Rest Area Operations						✓	⊙													

\*Data collected from WSPMS

\*\*\* Revised Performance measure with revised target

**Key**

⊙ Current Law Budget Service Level Commitment



Service Level Currently Delivered by WSDOT

# Maintenance Accountability Process

## Activity Service Level Targets and Service Levels Delivered

### Olympic Area 1 - CY 2006

Activity	1.0		1.9		2.0		2.9		3.0		3.9		4.0		4.9		5.0		5.9	
	+	A	-		+	B	-		+	C	-		+	D	-		+	F	-	
<b>Group - 1 Roadway Maintenance and Operations</b>																				
1A1 Pavement Patching & Repair*		✓		⊙																
1A2 Crack Sealing*									✓	⊙										
1A3 Shoulder Maintenance						✓			⊙											
1A4 Sweeping and Cleaning			✓	⊙																
1B1 Safety Patrol						✓			⊙											
<b>Group - 2 Drainage Maintenance and Slope Repair</b>																				
2A1 Maintain Ditches	✓					⊙														
2A2 Maintain Culverts									✓	⊙										
2A3 Maintain Catch Basins and Inlets			✓			⊙														
2A5 Slope Repair	✓					⊙														
<b>Group - 3 Roadside and Vegetation Management</b>																				
3A1 Litter Pickup																			⊙	✓
3A2 Noxious Weed Control	✓					⊙														
3A3 Nuisance Vegetation Control			✓					⊙												
3A4 Control of Vegetation Obstructions			✓					⊙												
<b>Group - 4 Bridge and Urban Tunnel Maintenance and Operations</b>																				
4A1 Bridge Deck Repair		✓						⊙												
4A3 Bridge Cleaning					✓					⊙										
<b>Group - 5 Snow and Ice Control Operations</b>																				
5B1 Snow and Ice Control Operations		✓							⊙											
<b>Group - 6 Traffic Control Maintenance and Operations</b>																				
6A2 Raised/Depressed Pavement Marker Maint.				✓	⊙															
6A3 Pavement Marking Maintenance			✓								⊙									
6A6 Guidepost Maintenance				✓							⊙									
6A7 Guardrail Maintenance	✓	⊙																		

\*Data collected from WSPMS

\*\*\* Revised Performance measure with revised target

**Key**

⊙ Current Law Budget Service Level Commitment

✓ Service Level Currently Delivered by WSDOT

# Maintenance Accountability Process

## Activity Service Level Targets and Service Levels Delivered

### Olympic Area 2 - CY 2006

Activity	1.0		1.9		2.0		2.9		3.0		3.9		4.0		4.9		5.0		5.9	
	+	A	-		+	B	-		+	C	-		+	D	-		+	F	-	
<b>Group - 1 Roadway Maintenance and Operations</b>																				
1A1 Pavement Patching & Repair*			✓	⊙																
1A2 Crack Sealing*							✓				⊙									
1A3 Shoulder Maintenance						✓			⊙											
1A4 Sweeping and Cleaning					⊙	✓														
1B1 Safety Patrol									⊙						✓					
<b>Group - 2 Drainage Maintenance and Slope Repair</b>																				
2A1 Maintain Ditches						✓	⊙													
2A2 Maintain Culverts					✓					⊙										
2A3 Maintain Catch Basins and Inlets		✓					⊙													
2A5 Slope Repair						✓	⊙													
<b>Group - 3 Roadside and Vegetation Management</b>																				
3A1 Litter Pickup														⊙					✓	
3A2 Noxious Weed Control	✓						⊙													
3A3 Nuisance Vegetation Control								⊙			✓									
3A4 Control of Vegetation Obstructions						✓		⊙												
<b>Group - 4 Bridge and Urban Tunnel Maintenance and Operations</b>																				
4A1 Bridge Deck Repair	✓							⊙												
4A3 Bridge Cleaning						✓				⊙										
<b>Group - 5 Snow and Ice Control Operations</b>																				
5B1 Snow and Ice Control Operations		✓							⊙											
<b>Group - 6 Traffic Control Maintenance and Operations</b>																				
6A2 Raised/Depressed Pavement Marker Maint.						✓	⊙													
6A3 Pavement Marking Maintenance										✓	⊙									
6A6 Guidepost Maintenance											✓	⊙								
6A7 Guardrail Maintenance		⊙	✓																	

\*Data collected from WSPMS

\*\*\* Revised Performance measure with revised target

**Key**

- ⊙ Current Law Budget Service Level Commitment
- ✓ Service Level Currently Delivered by WSDOT

# Maintenance Accountability Process

## Activity Service Level Targets and Service Levels Delivered

### Olympic Area 3 - CY 2006

Activity	1.0		1.9		2.0		2.9		3.0		3.9		4.0		4.9		5.0		5.9	
	+	A	-	+	B	-	+	C	-	+	D	-	+	F	-	+	-	+	-	
<b>Group - 1 Roadway Maintenance and Operations</b>																				
1A1 Pavement Patching & Repair*					⊙	✓														
1A2 Crack Sealing*						✓					⊙									
1A3 Shoulder Maintenance					✓				⊙											
1A4 Sweeping and Cleaning					⊙	✓														
1B1 Safety Patrol									⊙						✓					
<b>Group - 2 Drainage Maintenance and Slope Repair</b>																				
2A1 Maintain Ditches					✓	⊙														
2A2 Maintain Culverts										✓	⊙									
2A3 Maintain Catch Basins and Inlets						✓	⊙													
2A5 Slope Repair	✓					⊙														
<b>Group - 3 Roadside and Vegetation Management</b>																				
3A1 Litter Pickup										✓					⊙					
3A2 Noxious Weed Control	✓					⊙														
3A3 Nuisance Vegetation Control						✓	⊙													
3A4 Control of Vegetation Obstructions					✓		⊙													
<b>Group - 4 Bridge and Urban Tunnel Maintenance and Operations</b>																				
4A1 Bridge Deck Repair	✓						⊙													
4A3 Bridge Cleaning							✓			⊙										
<b>Group - 5 Snow and Ice Control Operations</b>																				
5B1 Snow and Ice Control Operations					✓				⊙											
<b>Group - 6 Traffic Control Maintenance and Operations</b>																				
6A2 Raised/Depressed Pavement Marker Maint.						⊙				✓										
6A3 Pavement Marking Maintenance						✓					⊙									
6A6 Guidepost Maintenance										✓	⊙									
6A7 Guardrail Maintenance		✓	⊙																	

\*Data collected from WSPMS

\*\*\* Revised Performance measure with revised target

**Key**

- ⊙ Current Law Budget Service Level Commitment
- ✓ Service Level Currently Delivered by WSDOT

## Maintenance Accountability Process

### Activity Service Level Targets and Service Levels Delivered

# Olympic Area 4 - CY 2006

Activity	1.0		1.9		2.0		2.9		3.0		3.9		4.0		4.9		5.0		5.9	
	+	A	-		+	B	-		+	C	-		+	D	-		+	F	-	
<b>Group - 1 Roadway Maintenance and Operations</b>																				
1A1 Pavement Patching & Repair*	✓			⊙																
1A2 Crack Sealing*		✓								⊙										
1A3 Shoulder Maintenance			✓						⊙											
1A4 Sweeping and Cleaning		✓		⊙																
1B1 Safety Patrol									⊙					✓						
<b>Group - 2 Drainage Maintenance and Slope Repair</b>																				
2A1 Maintain Ditches			✓		⊙															
2A2 Maintain Culverts									⊙					✓						
2A3 Maintain Catch Basins and Inlets					✓	⊙														
2A5 Slope Repair		✓			⊙															
<b>Group - 3 Roadside and Vegetation Management</b>																				
3A1 Litter Pickup														⊙			✓			
3A2 Noxious Weed Control		✓			⊙															
3A3 Nuisance Vegetation Control					✓	⊙														
3A4 Control of Vegetation Obstructions					✓	⊙														
<b>Group - 4 Bridge and Urban Tunnel Maintenance and Operations</b>																				
4A1 Bridge Deck Repair					✓	⊙														
4A3 Bridge Cleaning									✓	⊙										
<b>Group - 5 Snow and Ice Control Operations</b>																				
5B1 Snow and Ice Control Operations		✓							⊙											
<b>Group - 6 Traffic Control Maintenance and Operations</b>																				
6A2 Raised/Depressed Pavement Marker Maint.					⊙				✓											
6A3 Pavement Marking Maintenance										✓	⊙									
6A6 Guidepost Maintenance										✓	⊙									
6A7 Guardrail Maintenance		⊙		✓																

\*Data collected from WSPMS

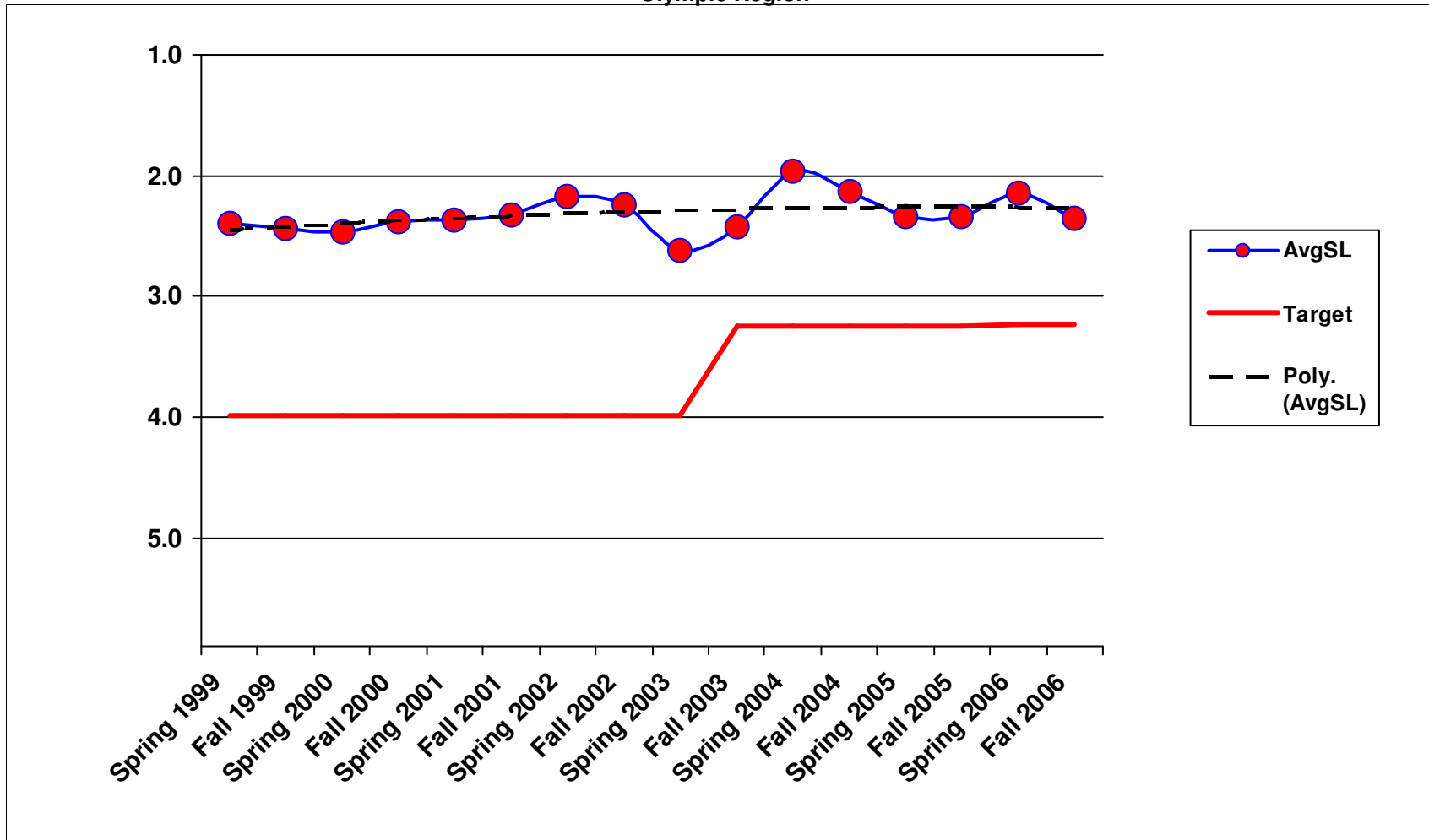
\*\*\* Revised Performance measure with revised target

**Key**

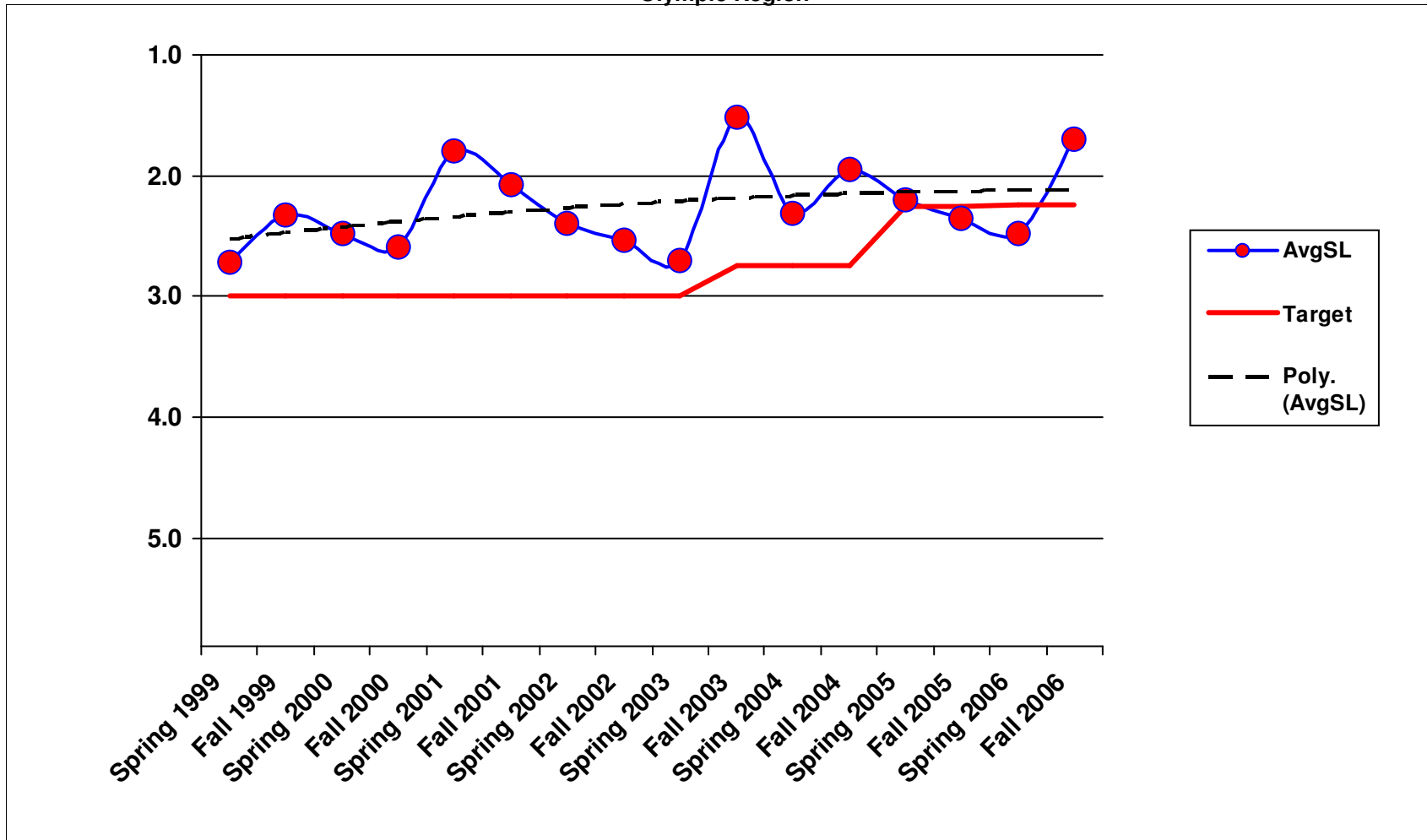
⊙ Current Law Budget Service Level Commitment

✓ Service Level Currently Delivered by WSDOT

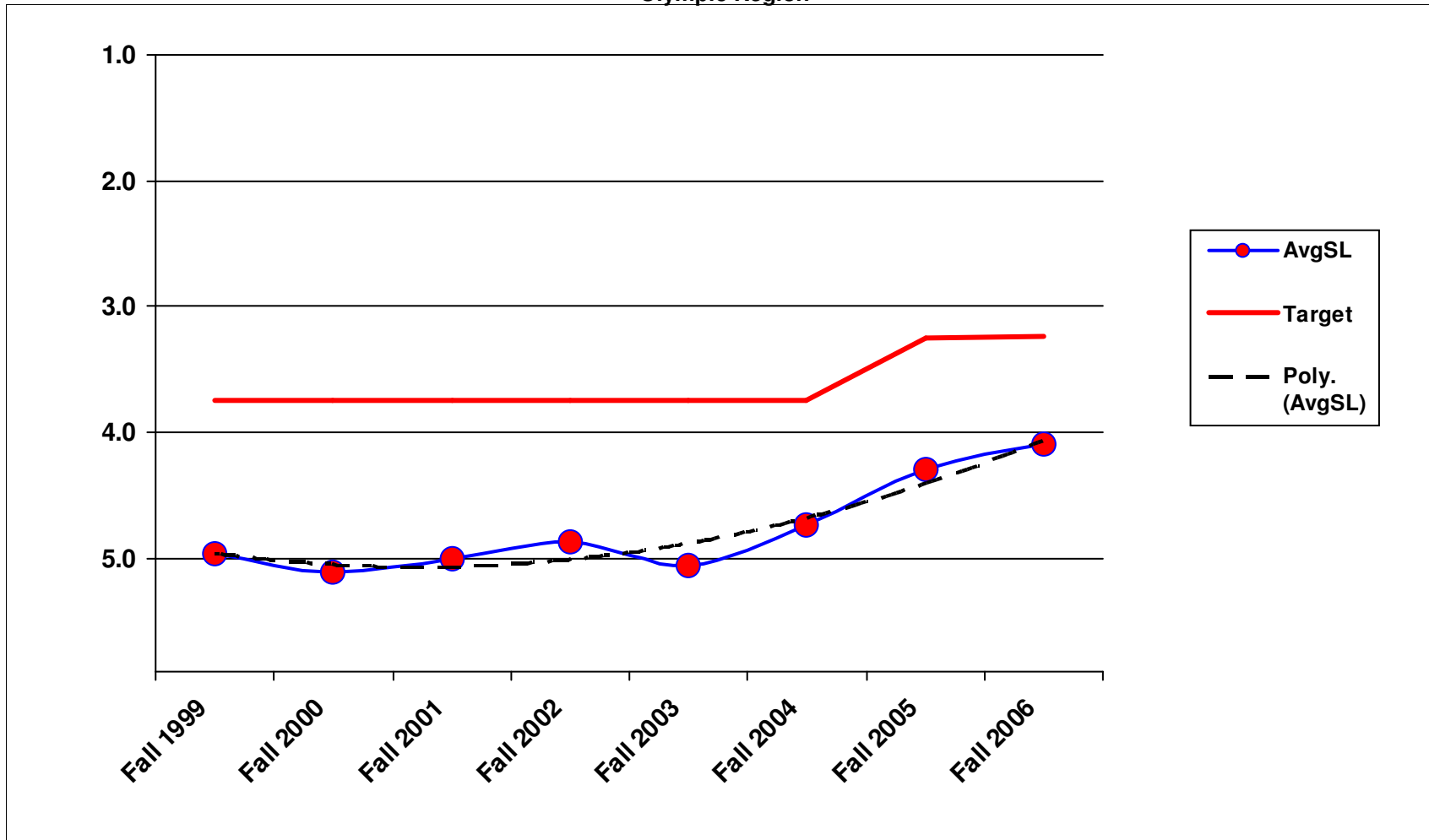
1A3 - Shoulder Maintenance  
Olympic Region



### 1A4 - Sweeping and Cleaning Olympic Region

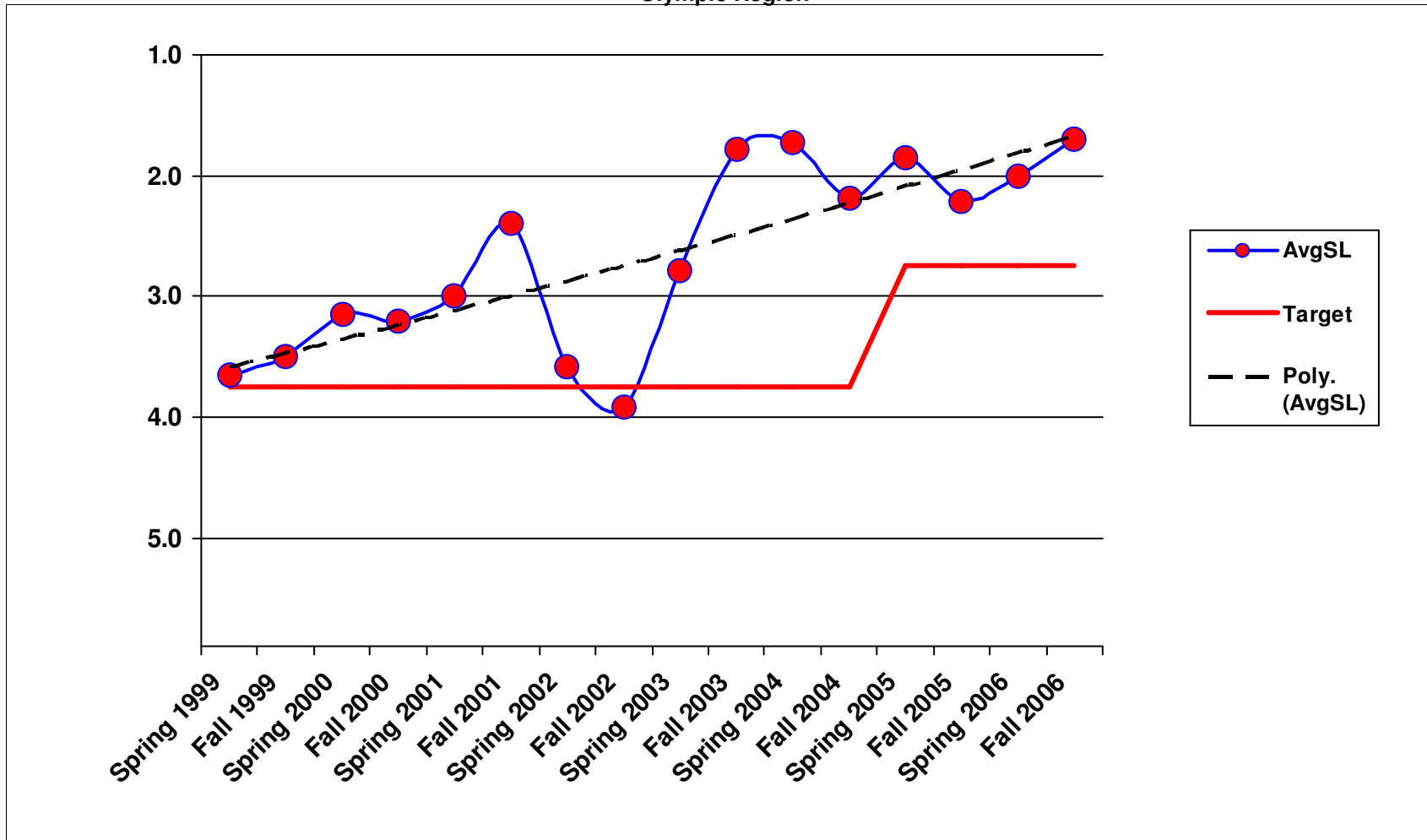


**1B1 - Safety Patrol**  
Olympic Region

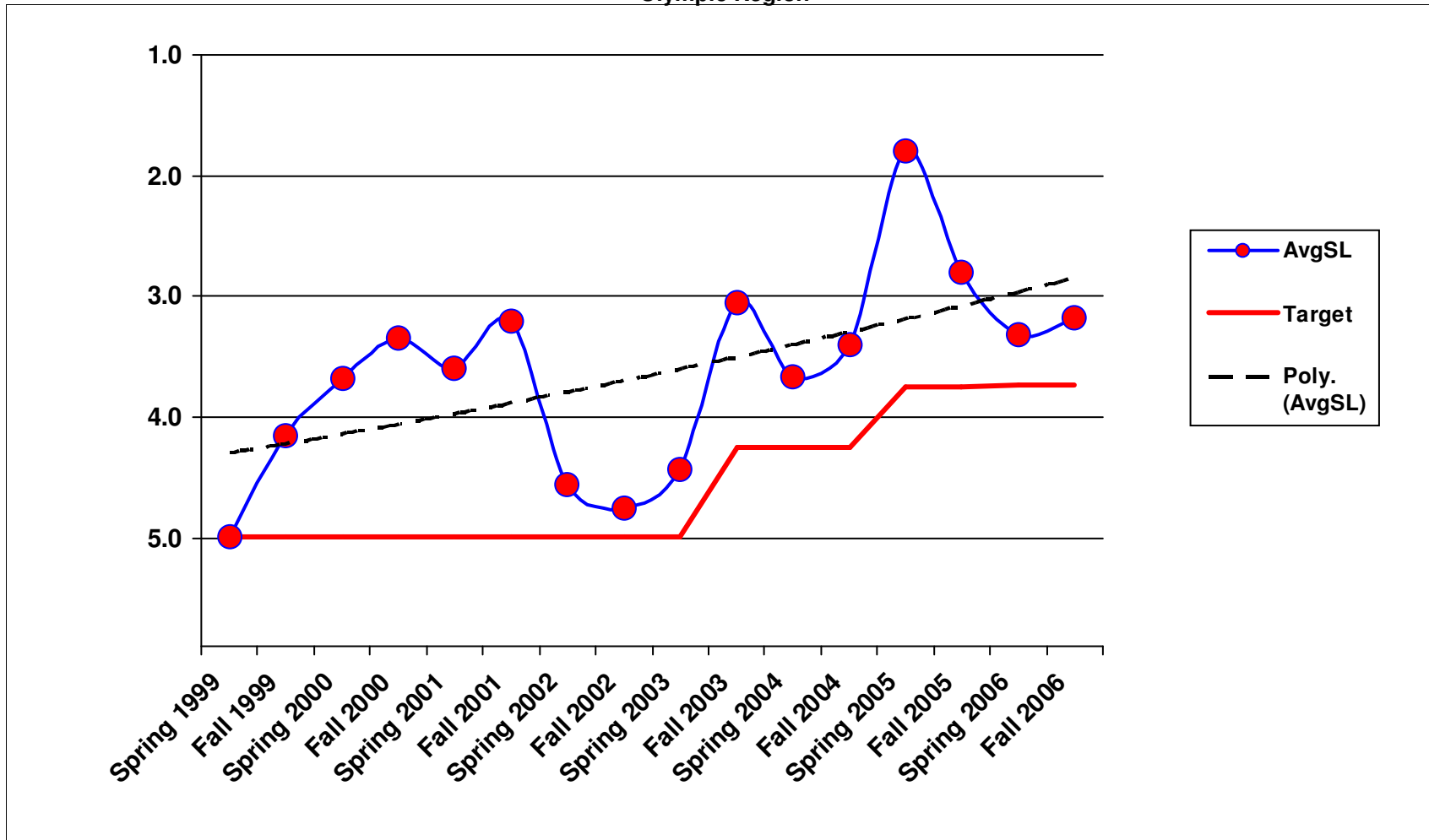


1/23/2007

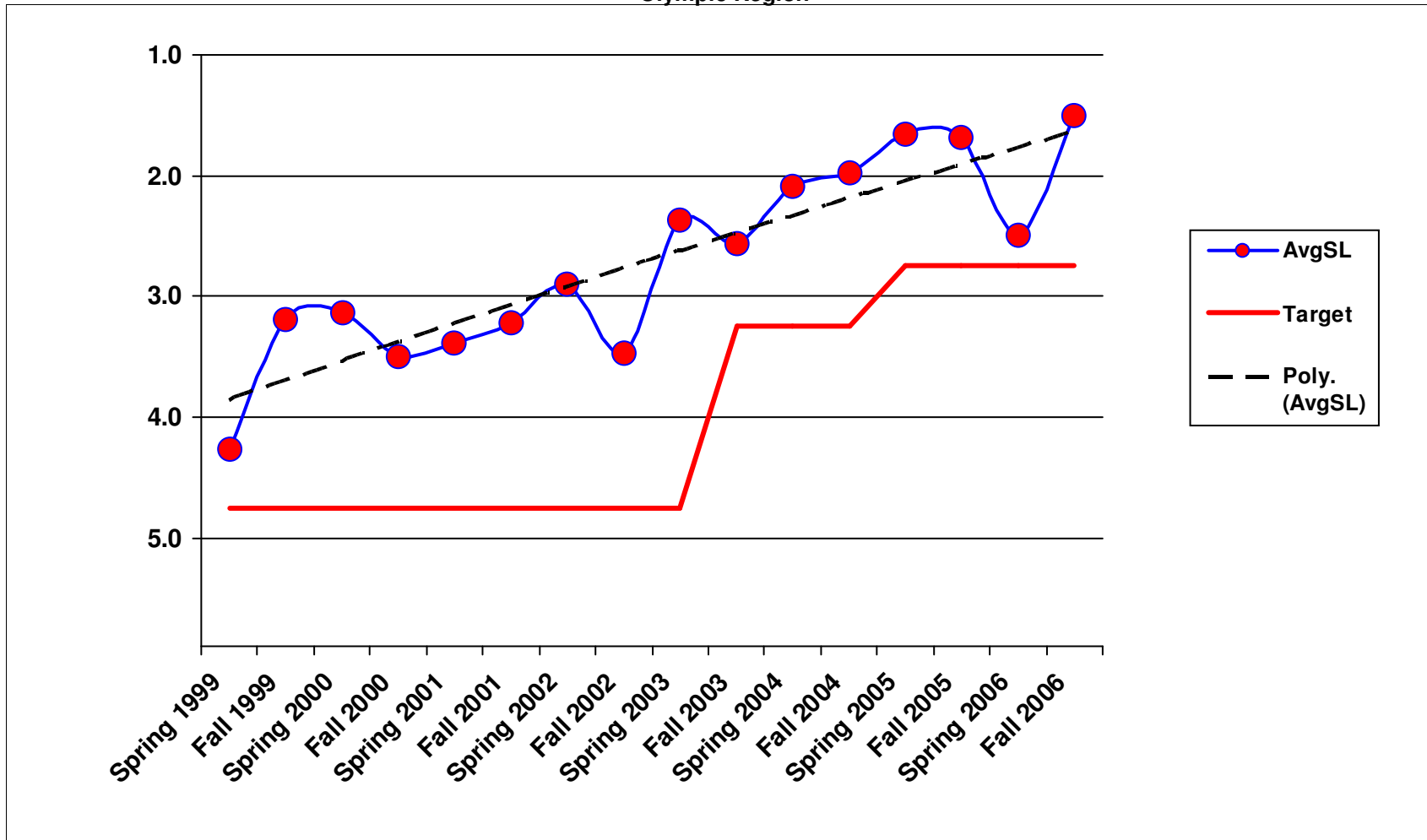
2A1 - Maintain Ditches  
Olympic Region



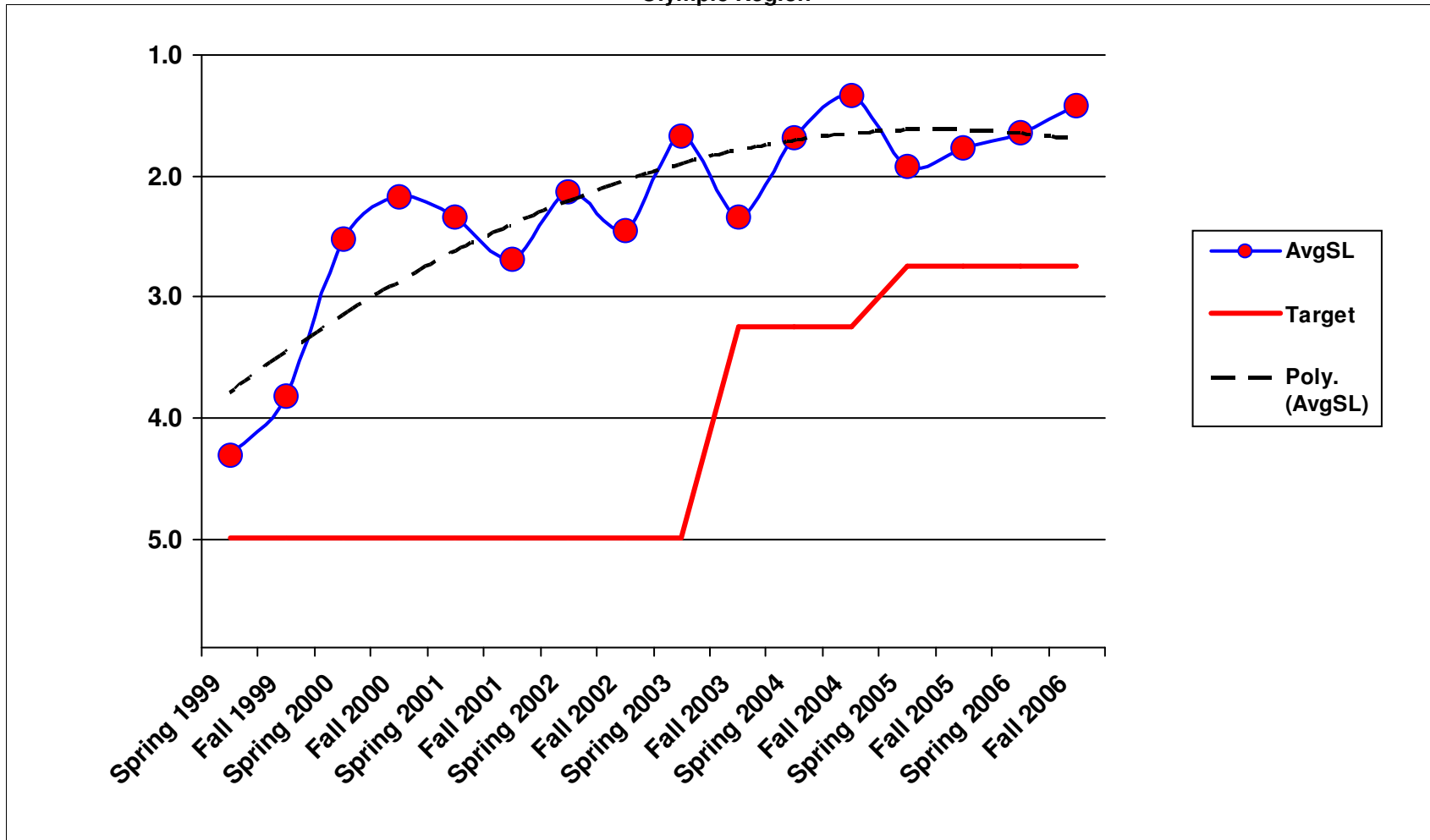
2A2 - Maintain Culverts  
Olympic Region



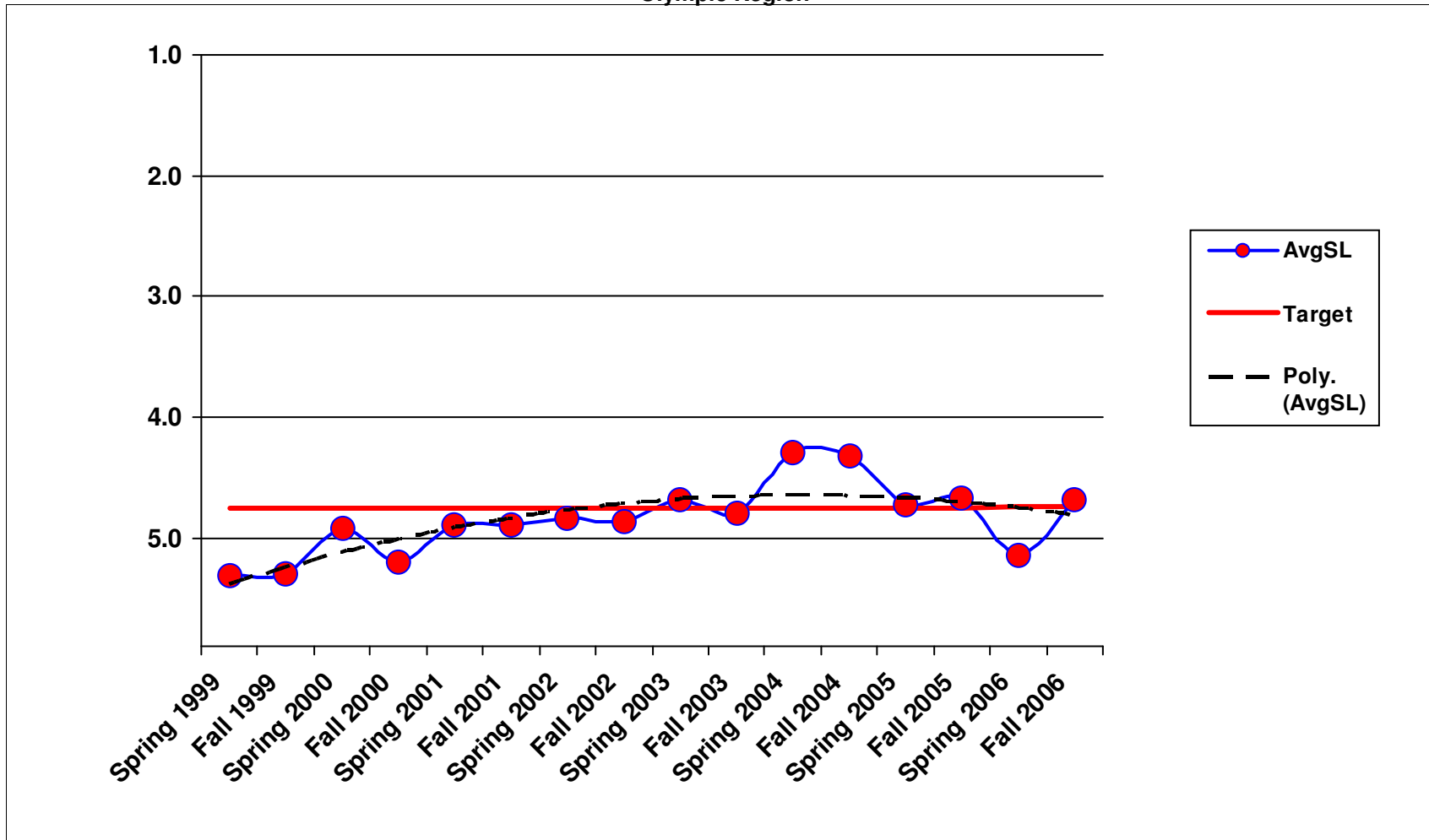
**2A3 - Maintain Catch Basins and Inlets**  
Olympic Region



### 2A5 - Slope Repair Olympic Region

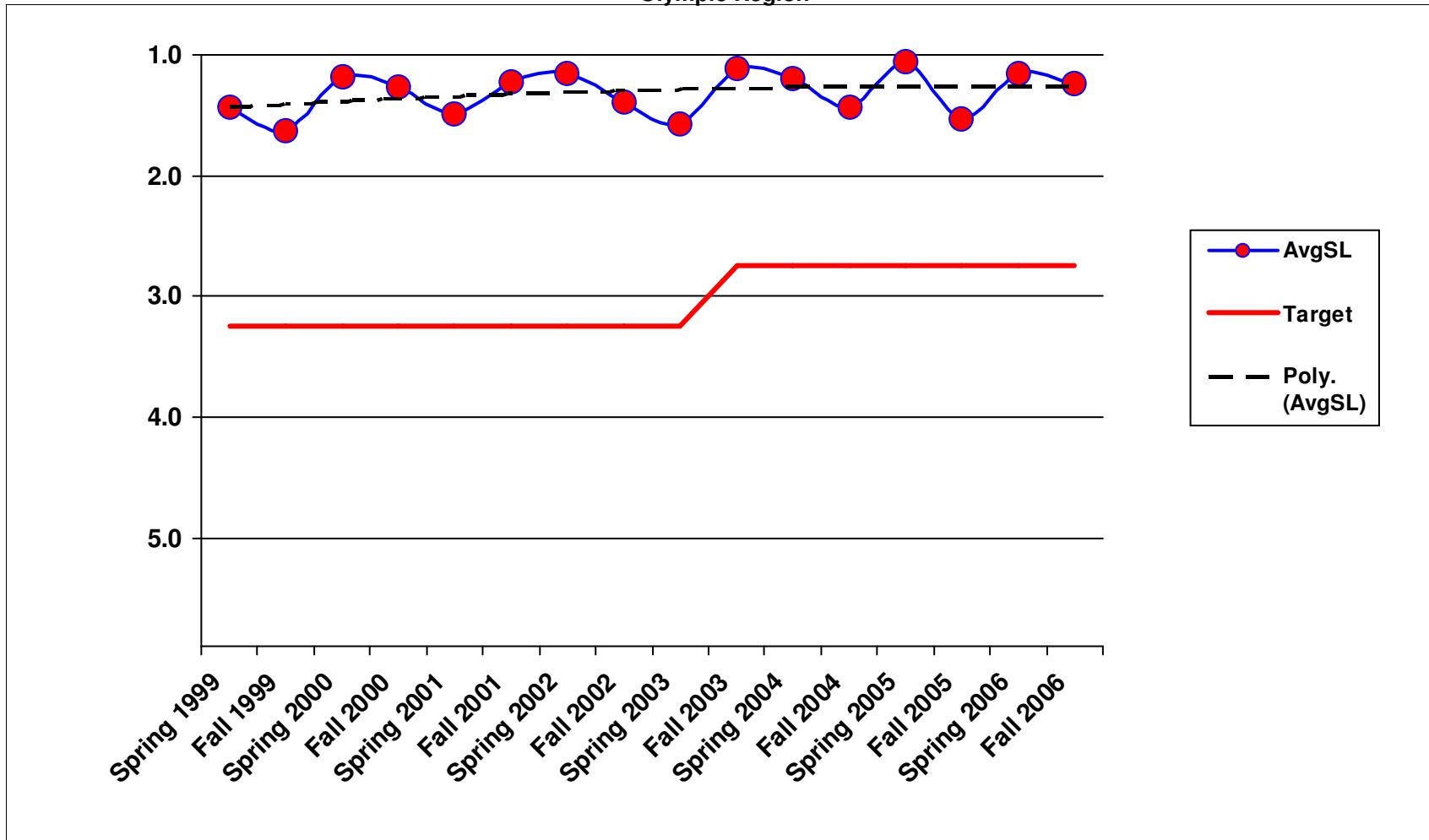


### 3A1 - Litter Pickup Olympic Region

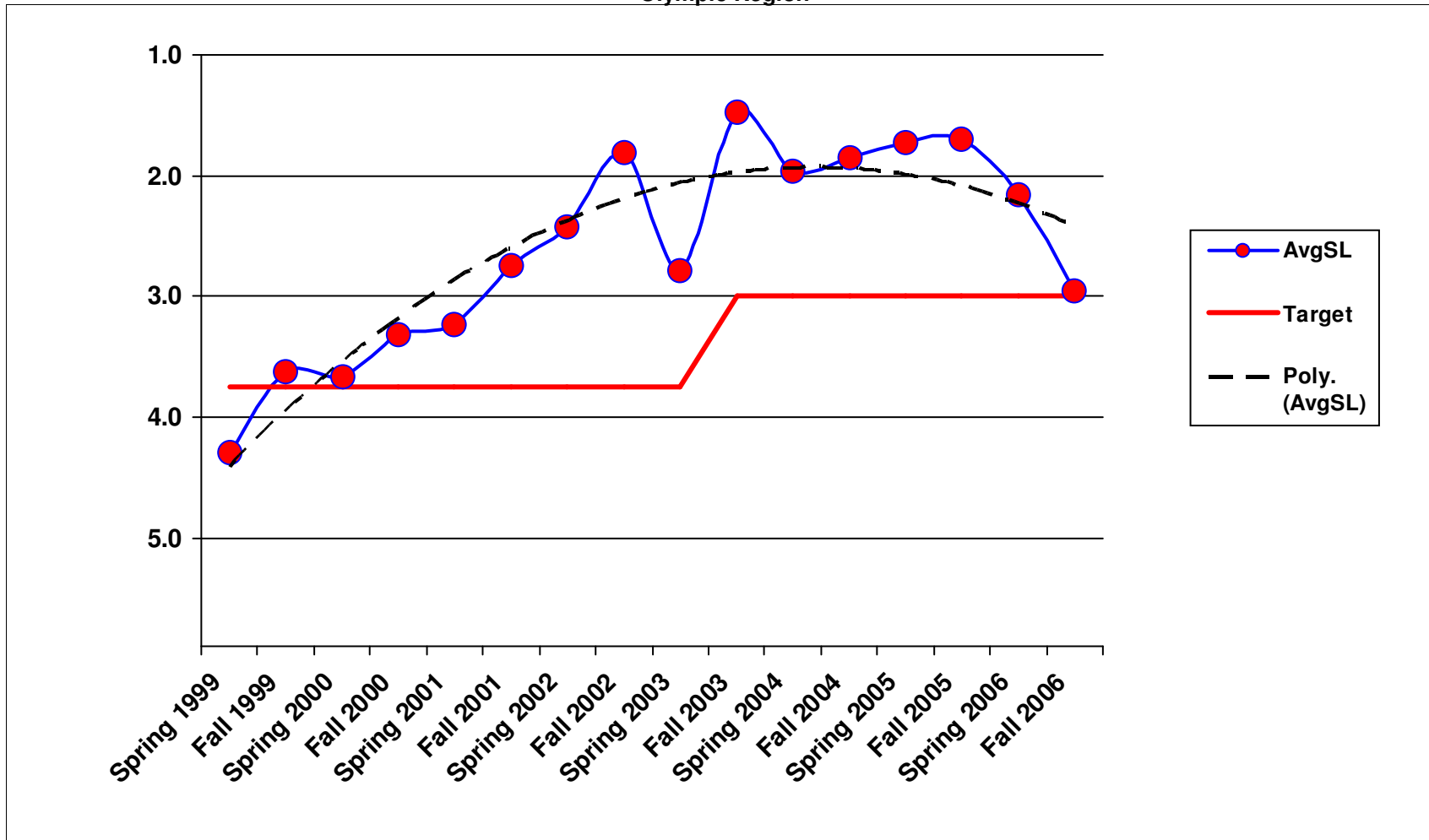


1/23/2007

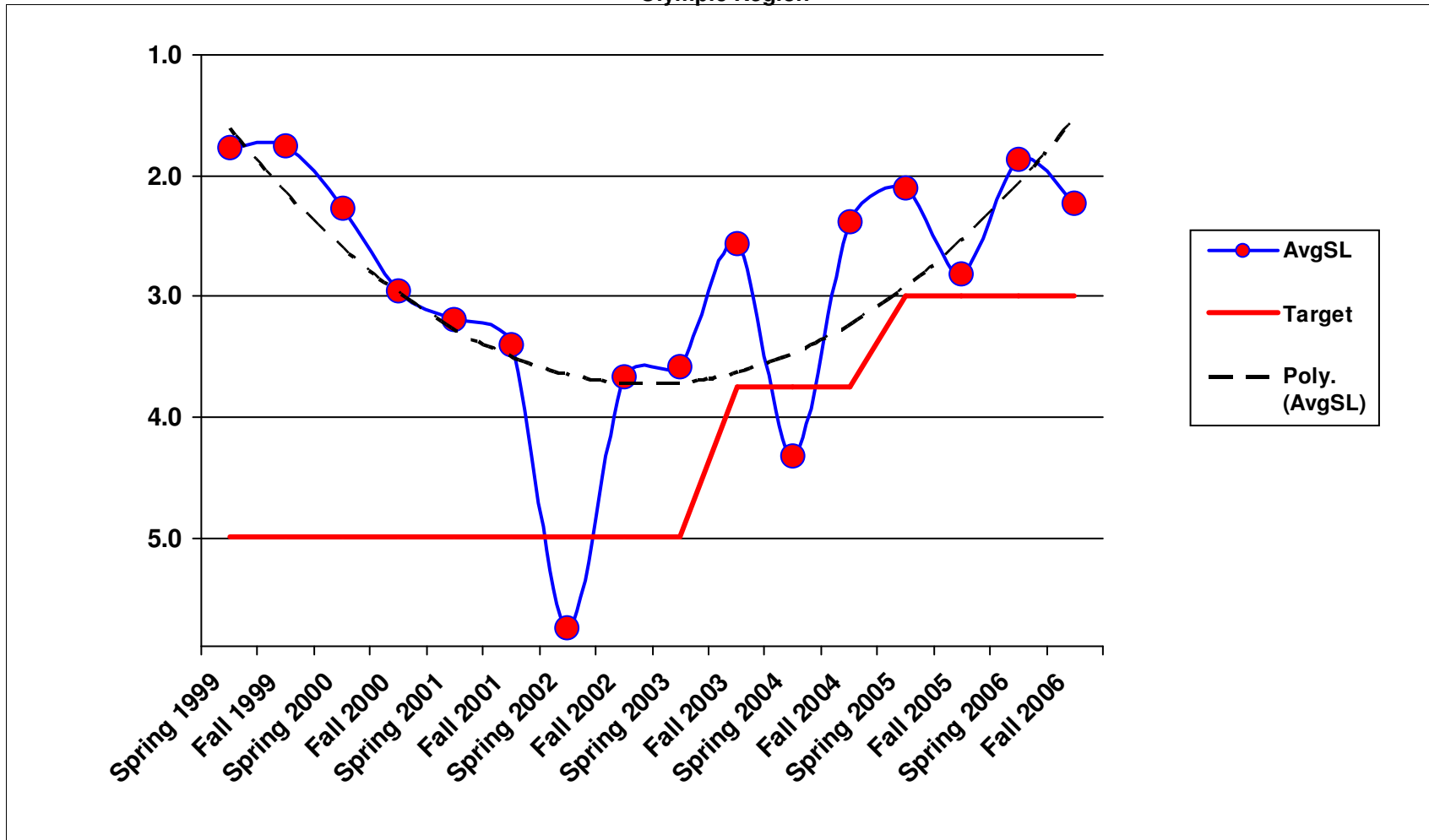
### 3A2 - Noxious Weed Control Olympic Region



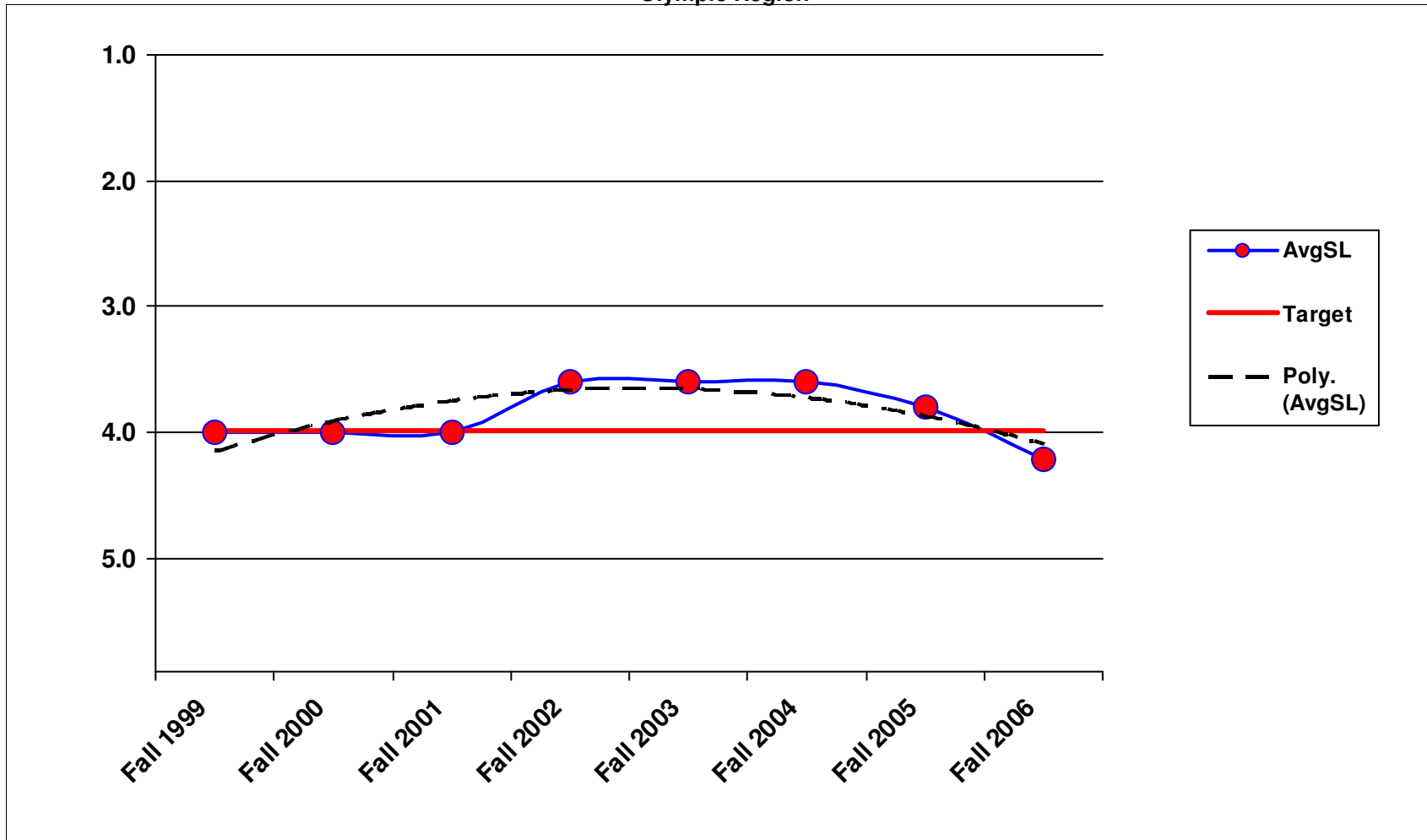
### 3A3 - Nuisance Vegetation Control Olympic Region



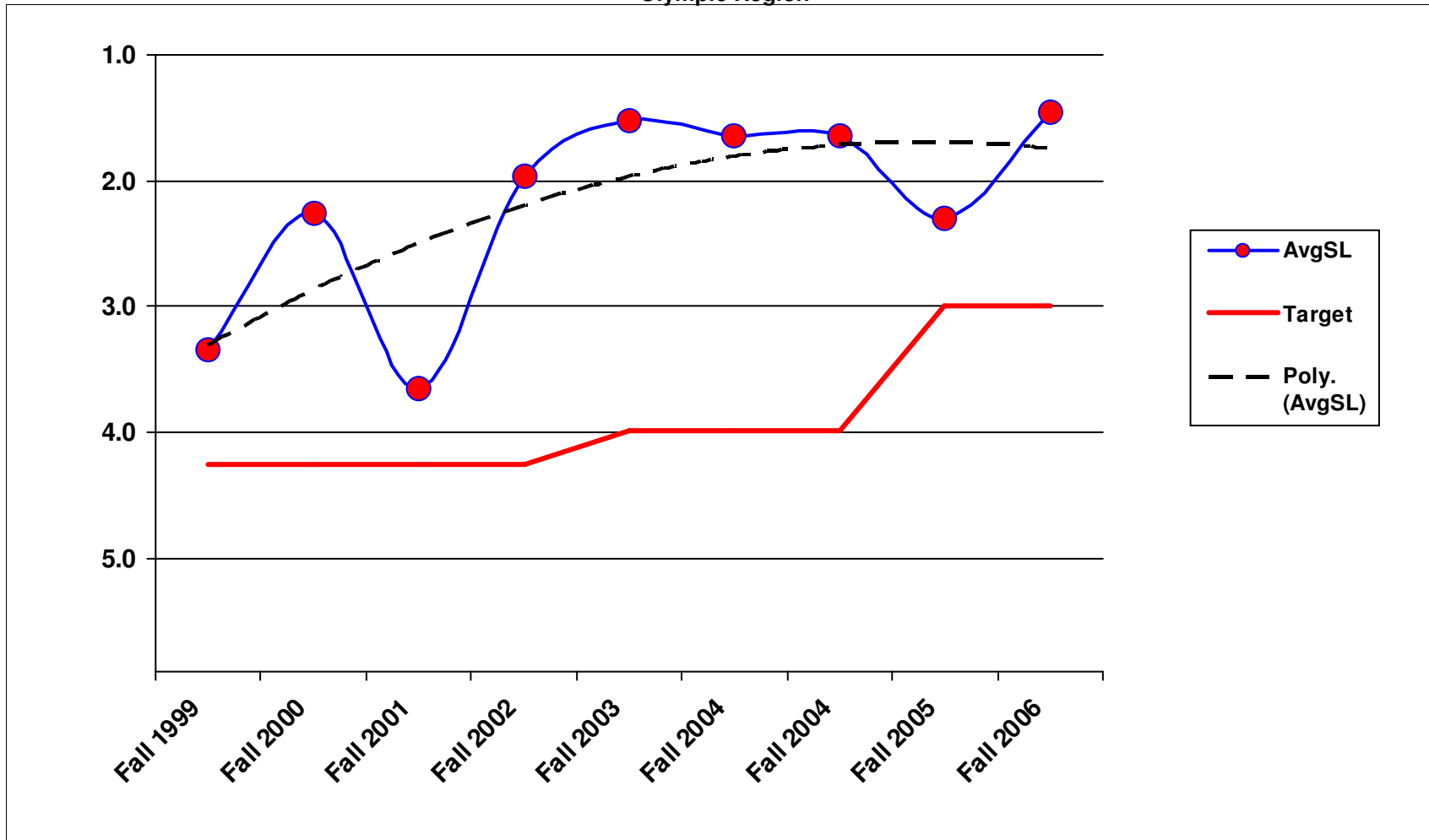
### 3A4 - Control of Vegetation Obstructions Olympic Region



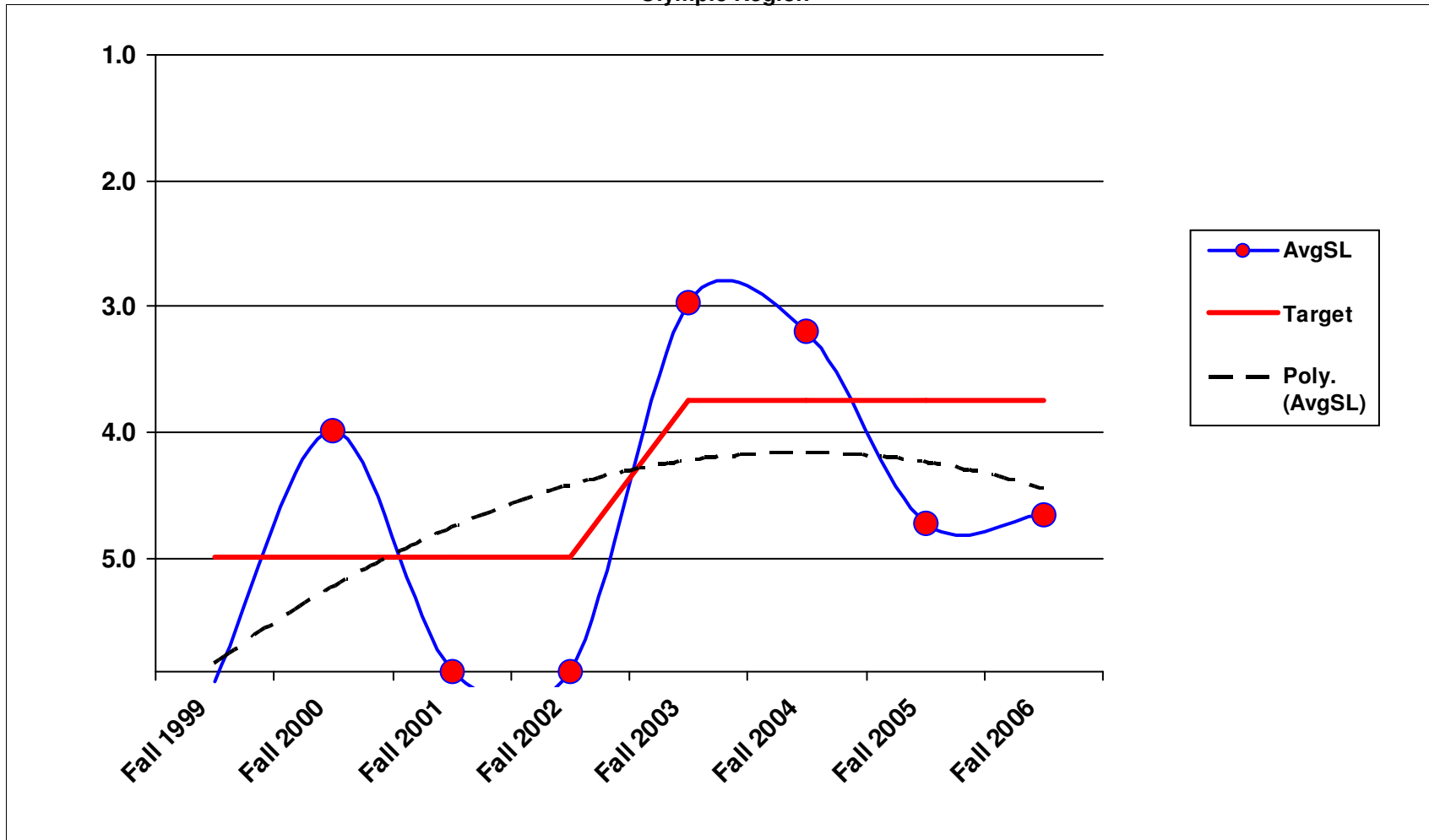
### 3A5 - Landscape Maintenance Olympic Region



4A1 - Bridge Deck Repair  
Olympic Region

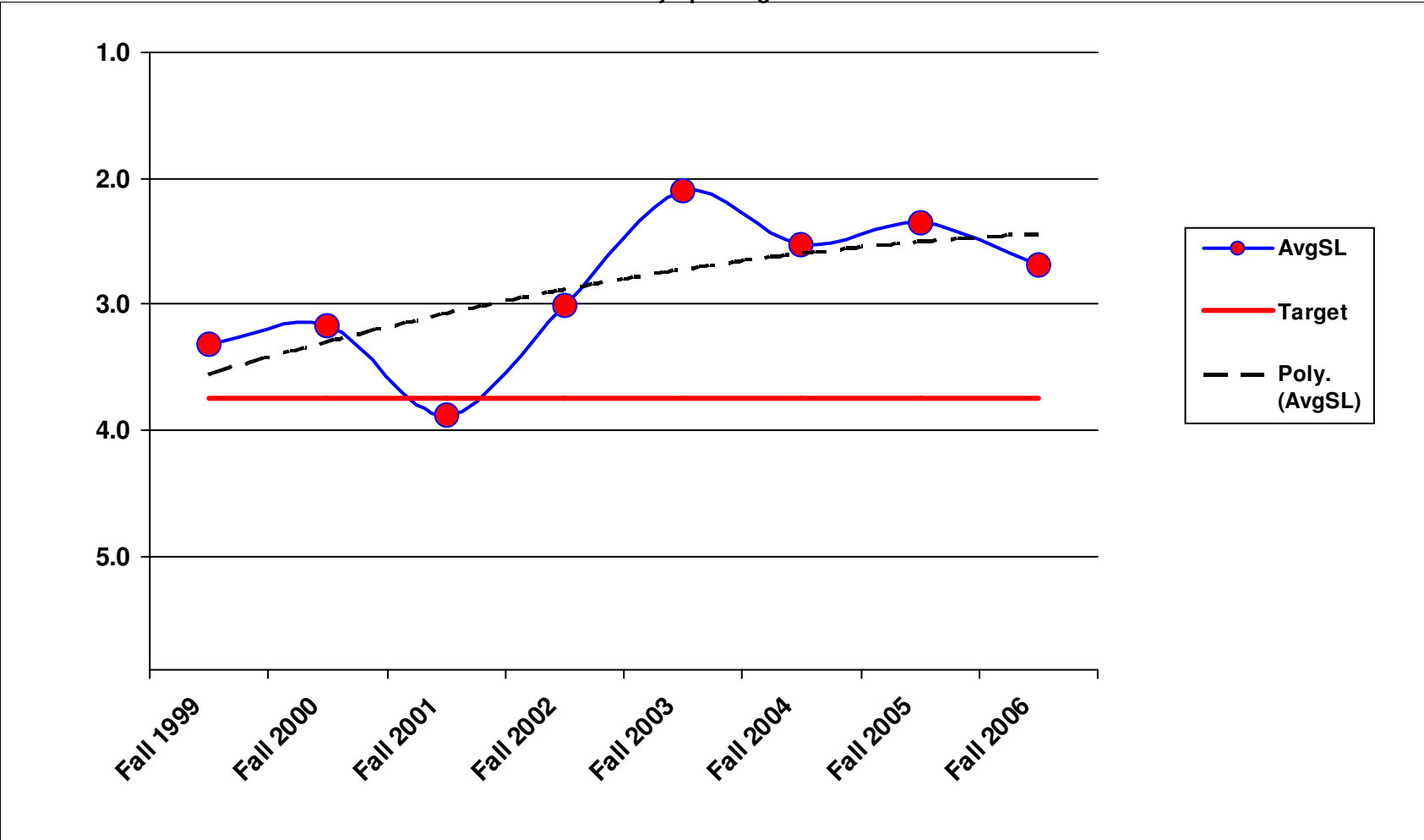


### 4A2 - Structural Bridge Repair Olympic Region

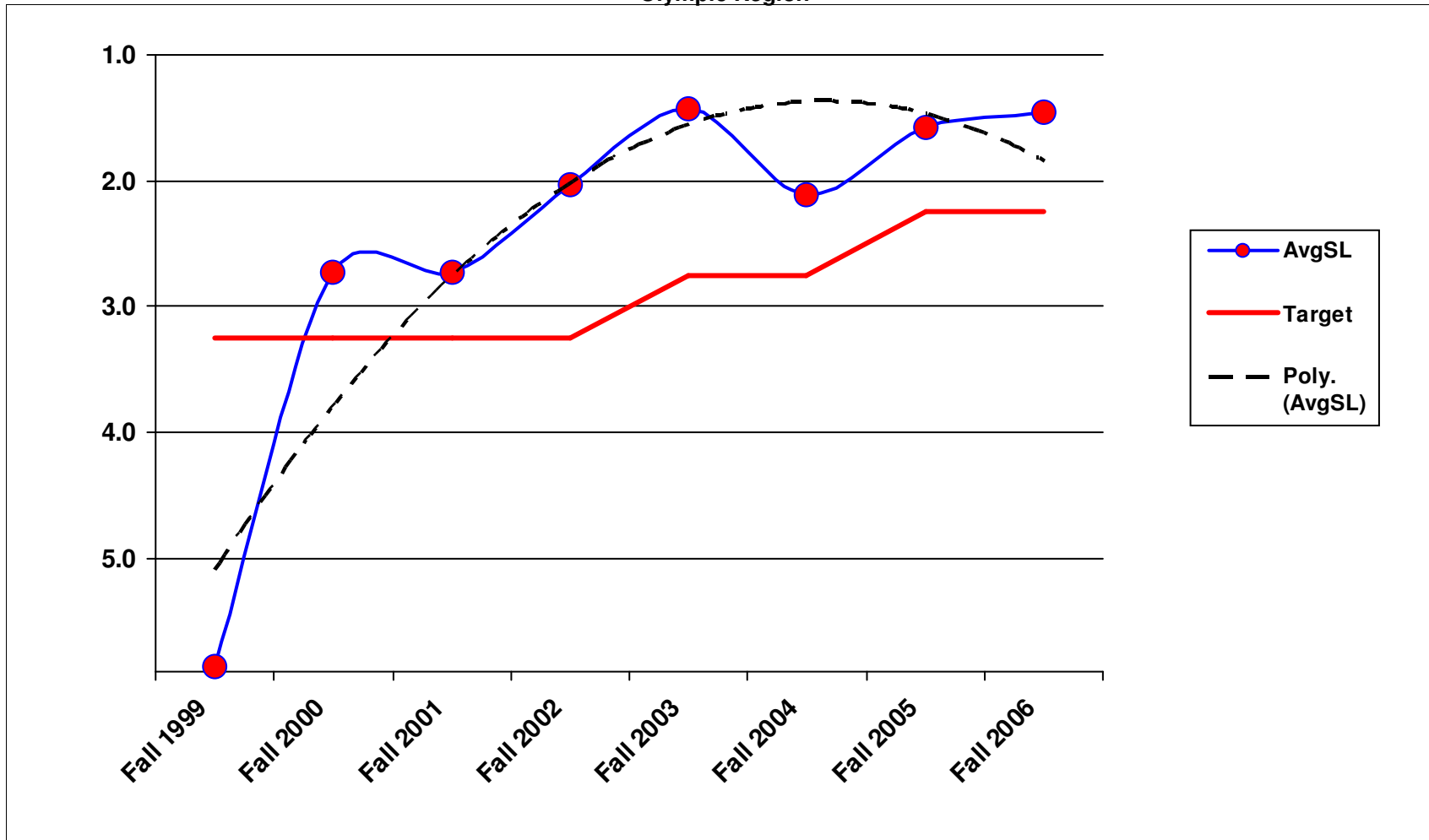


1/23/2007

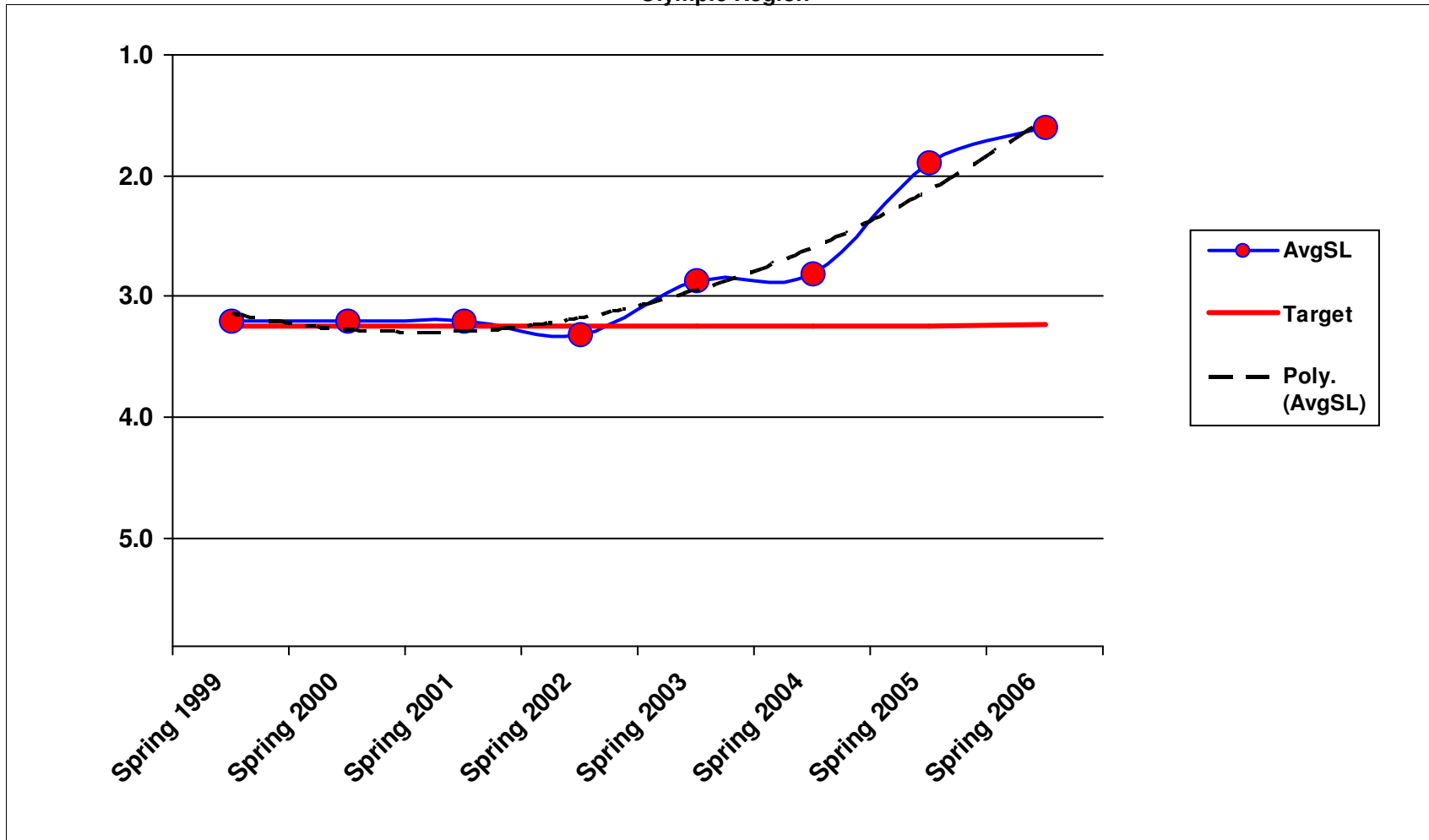
4A3 - Bridge Cleaning  
Olympic Region



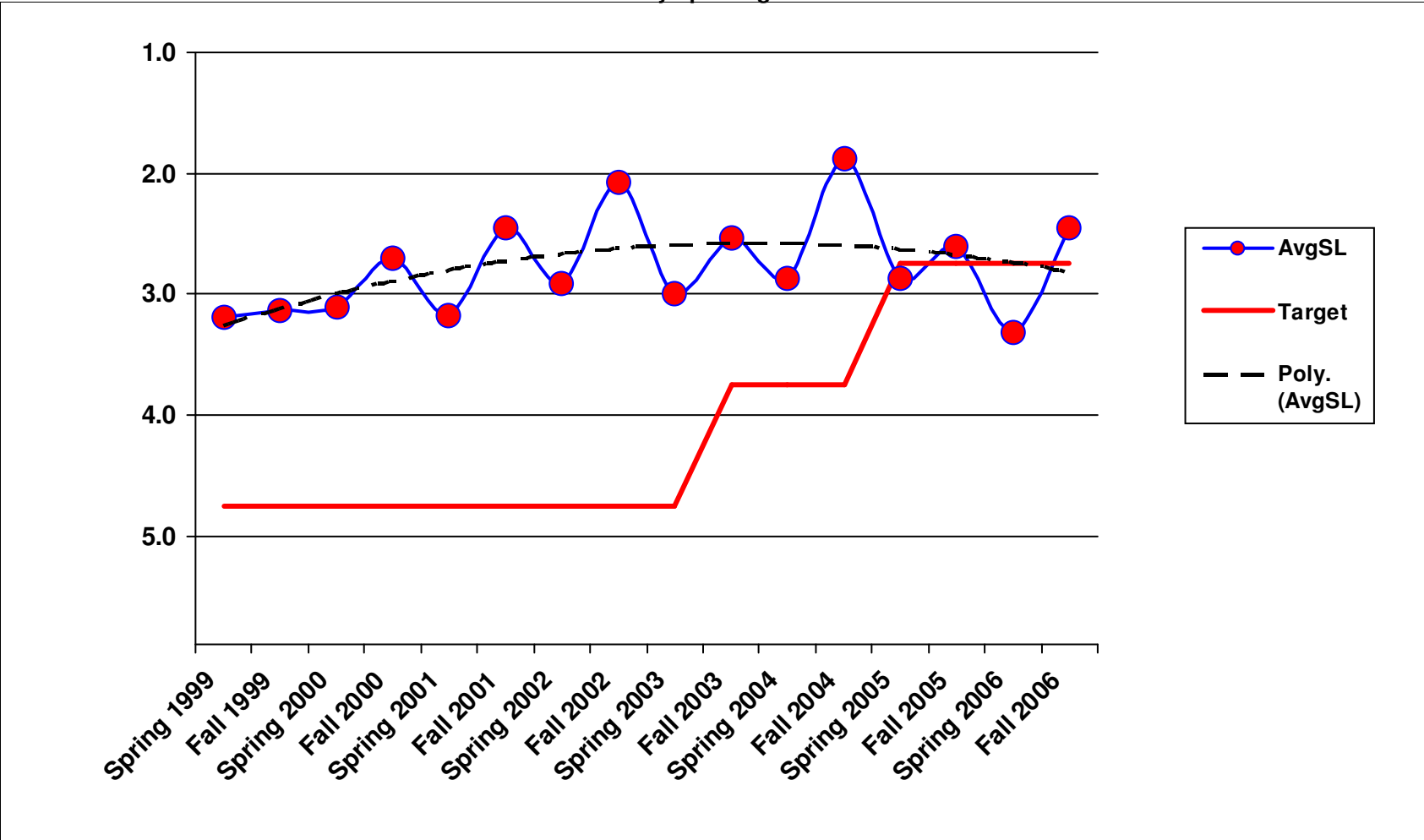
### 4B1 - Movable and Floating Bridge Operations Olympic Region



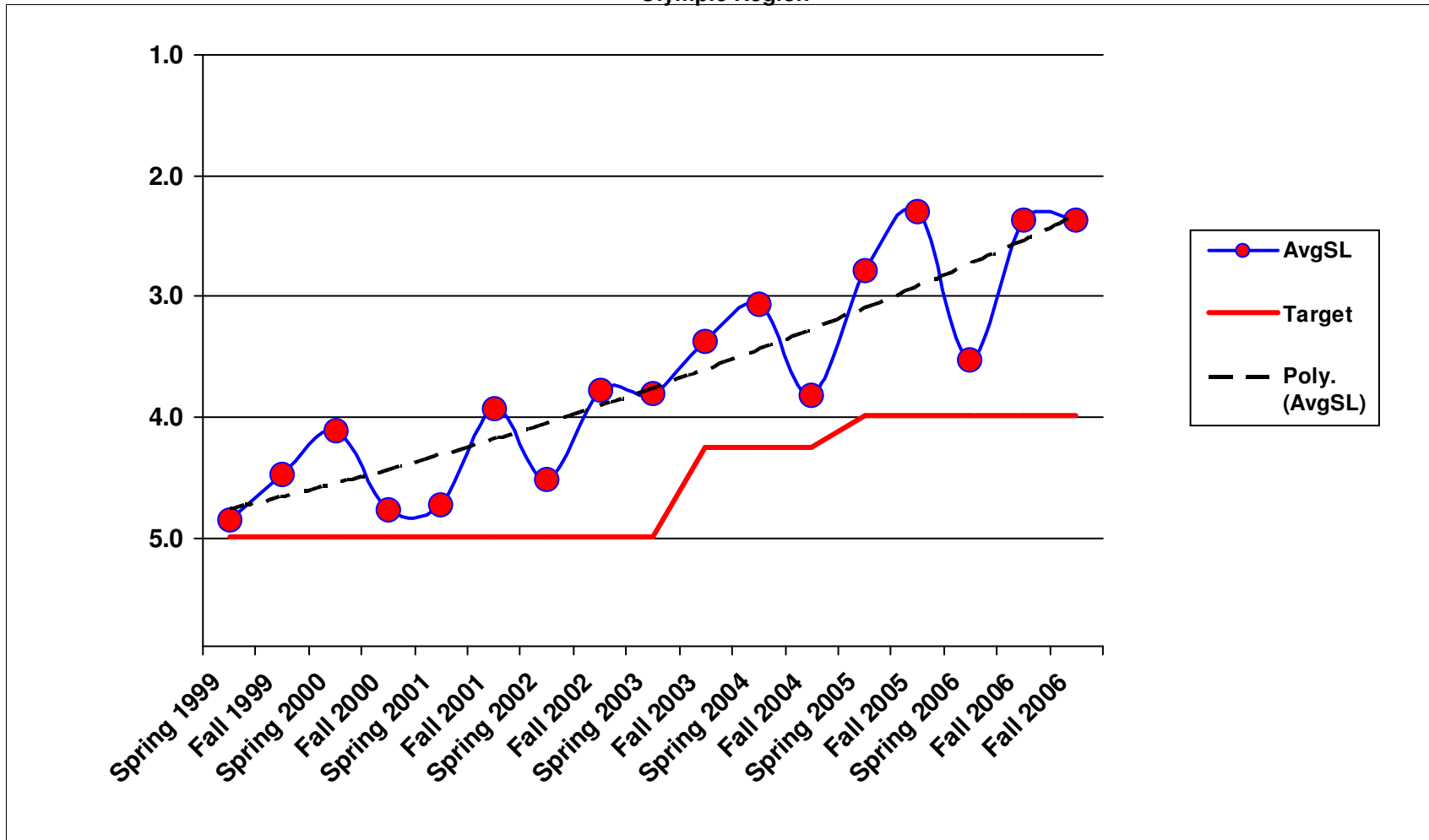
### 5B1 - Snow and Ice Control Operations Olympic Region



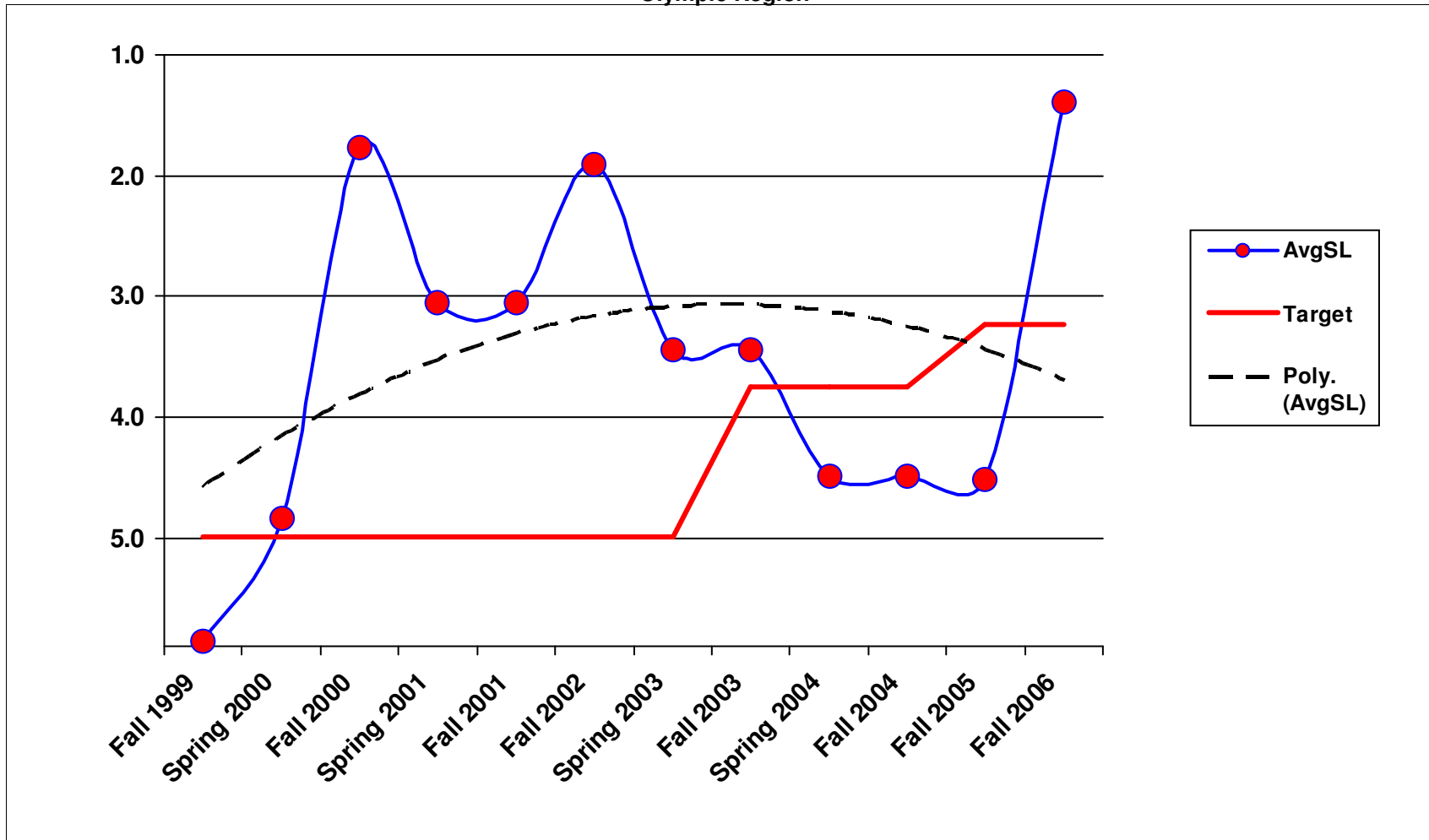
**6A2 - Raised/Depressed Pavement Marker Maintenance  
Olympic Region**



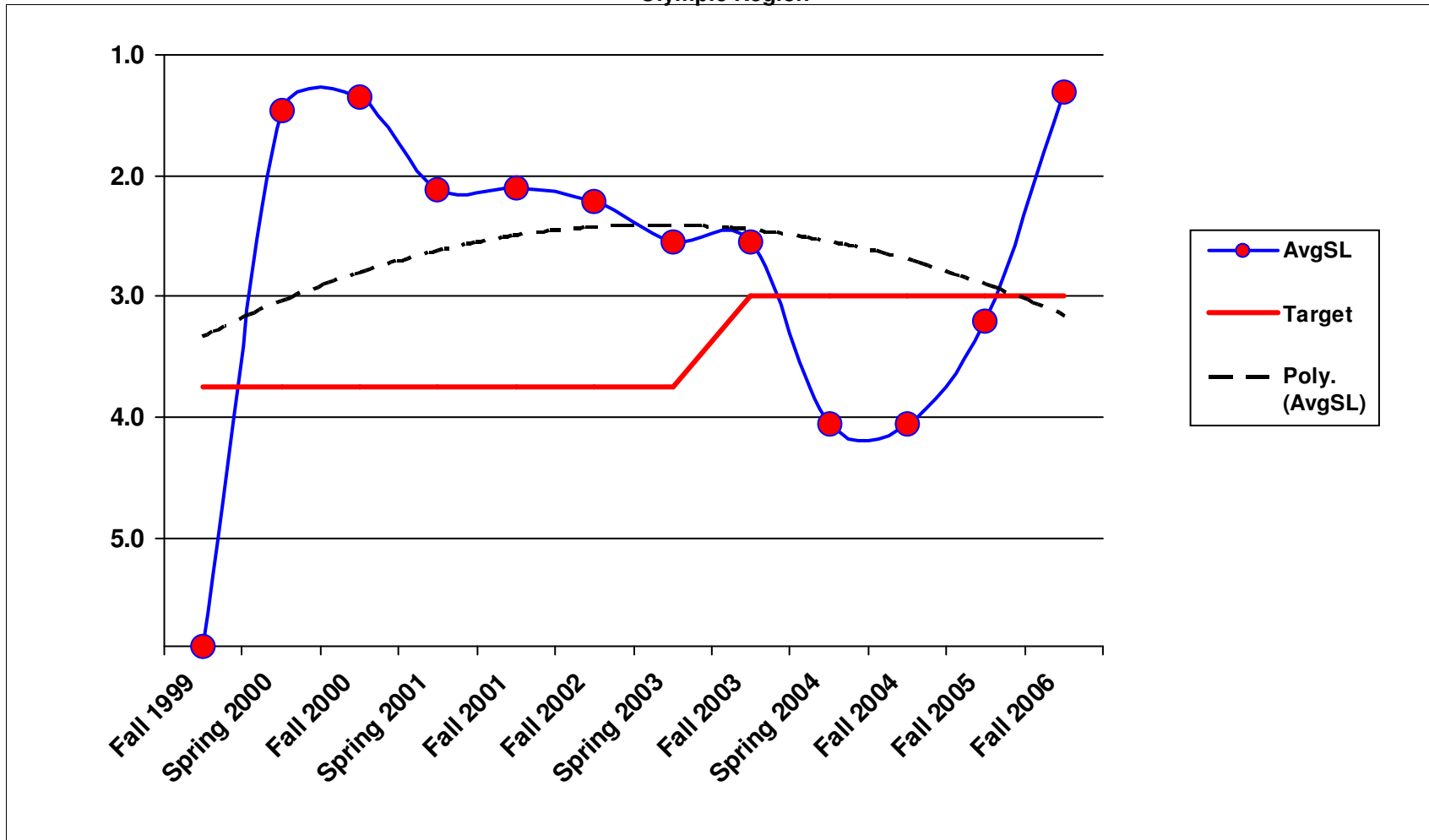
### 6A3 - Pavement Marking Maintenance Olympic Region



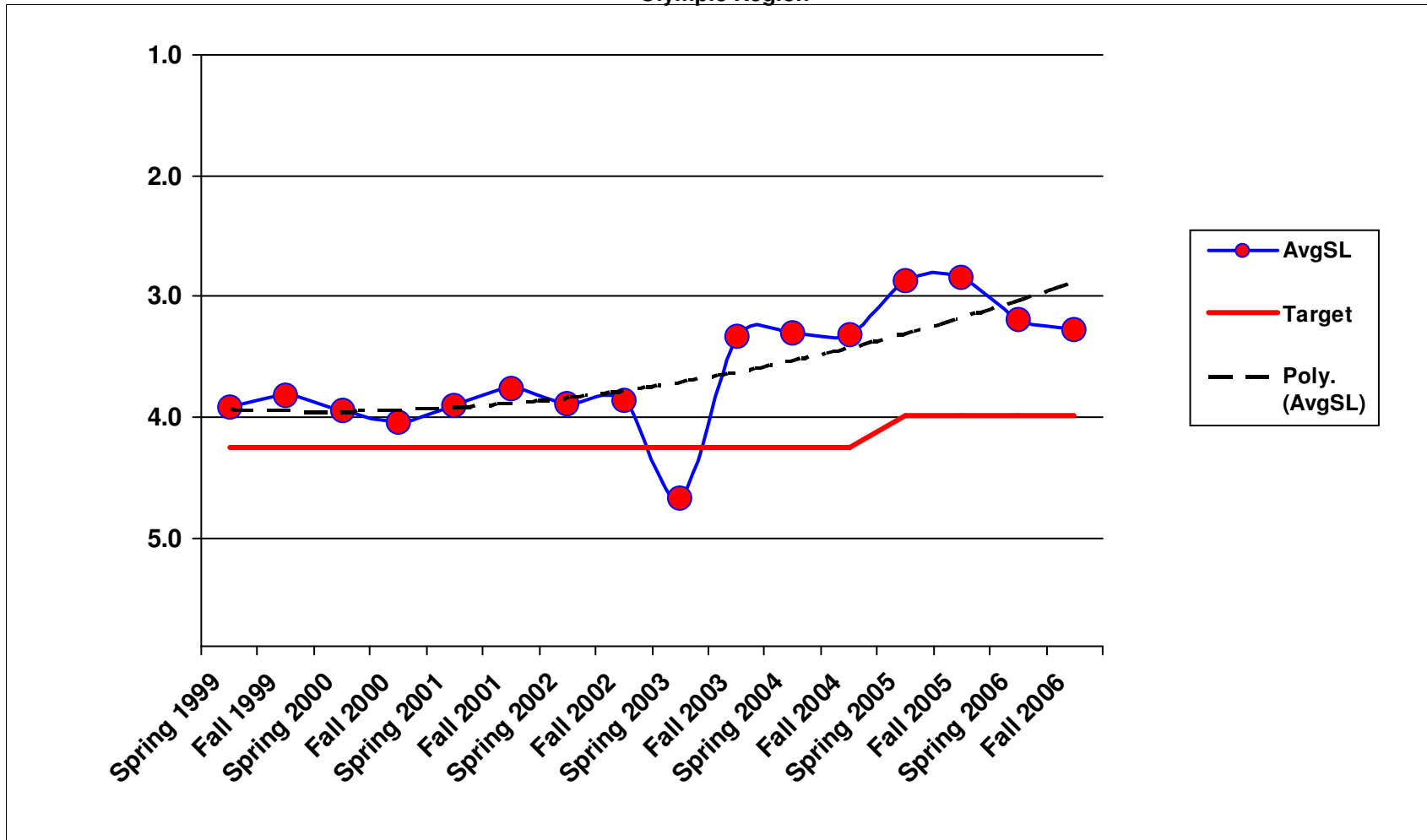
### 6A4 - Regulatory Sign Maintenance Olympic Region



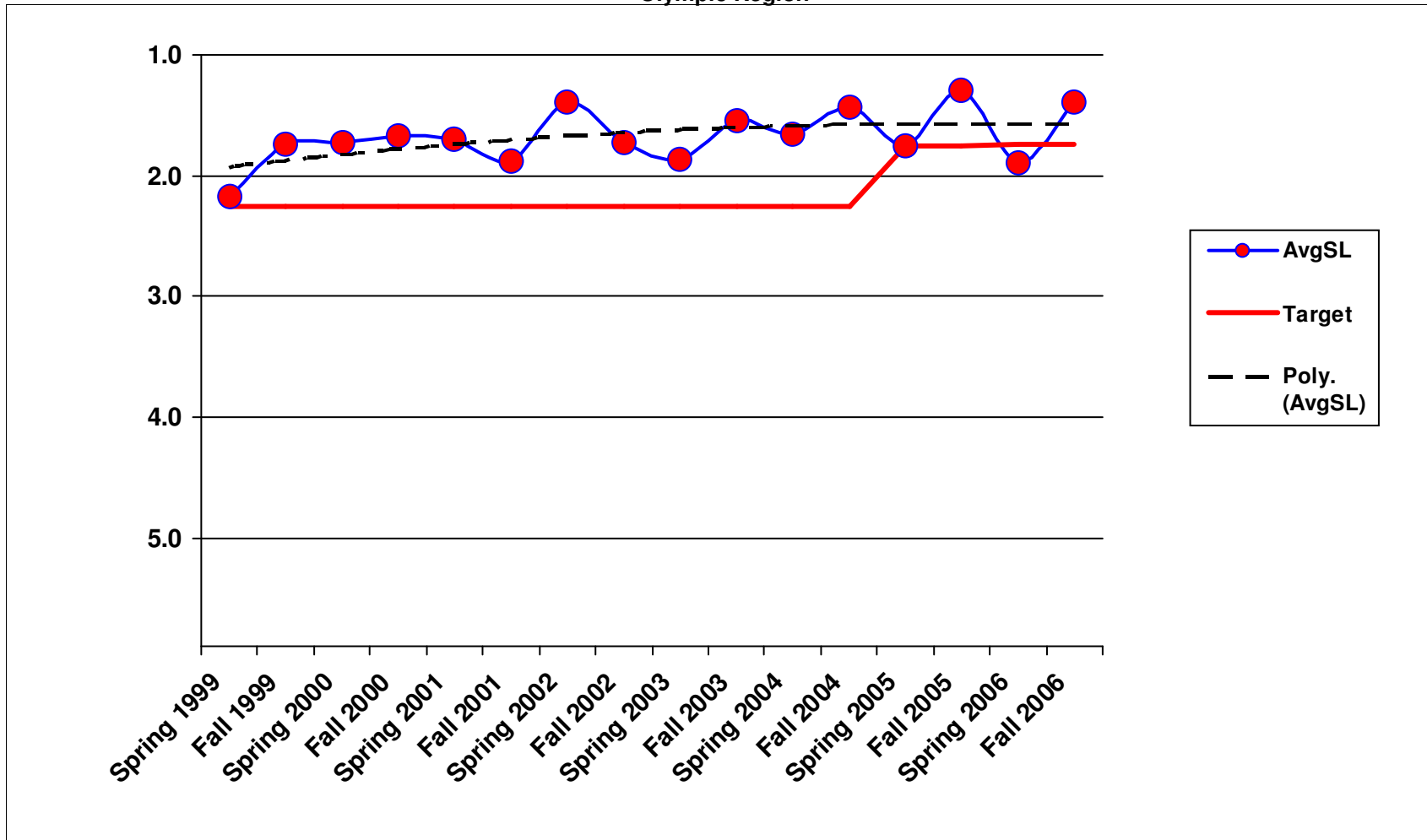
6A5 - Guide Sign Maintenance  
Olympic Region



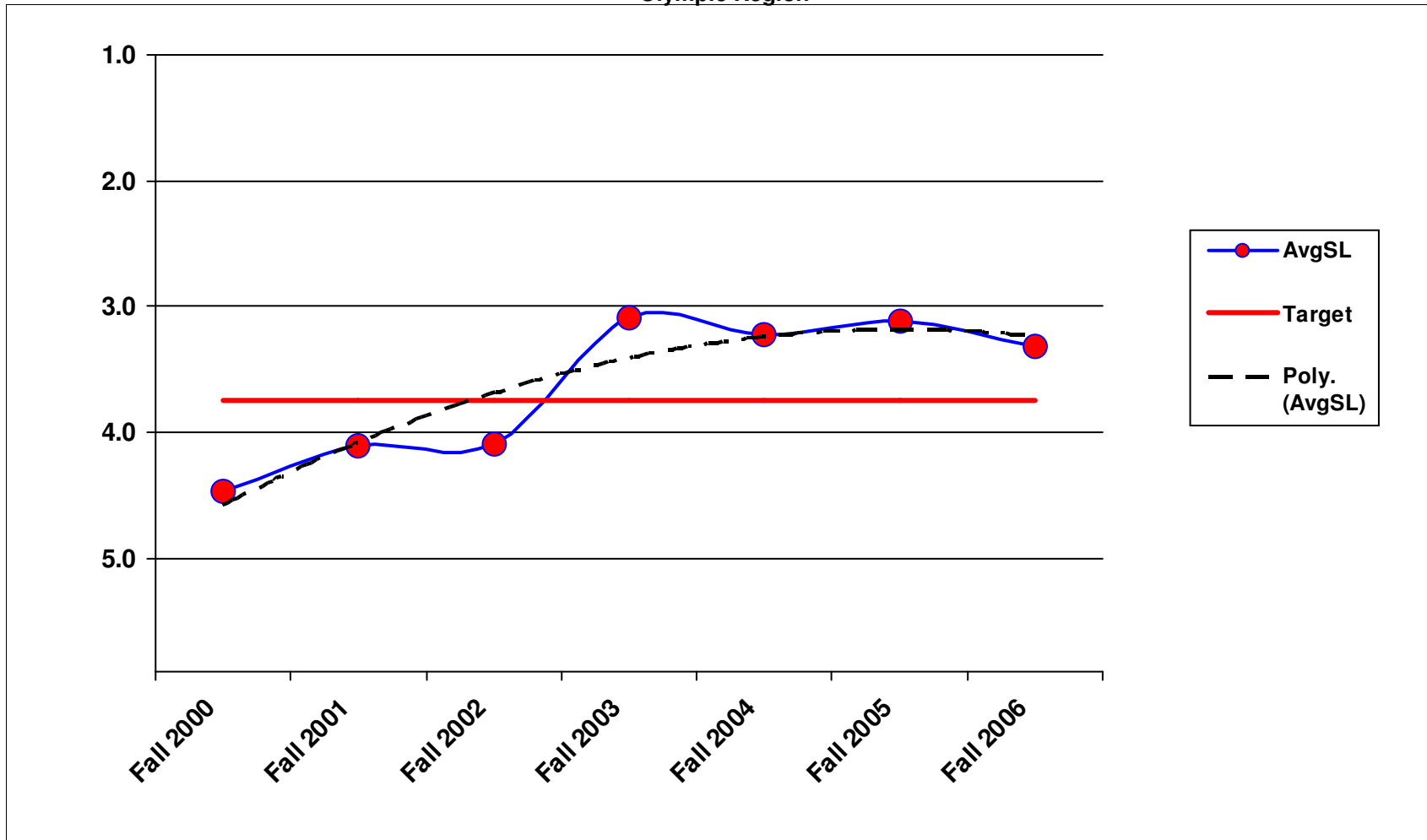
### 6A6 - Guidepost Maintenance Olympic Region



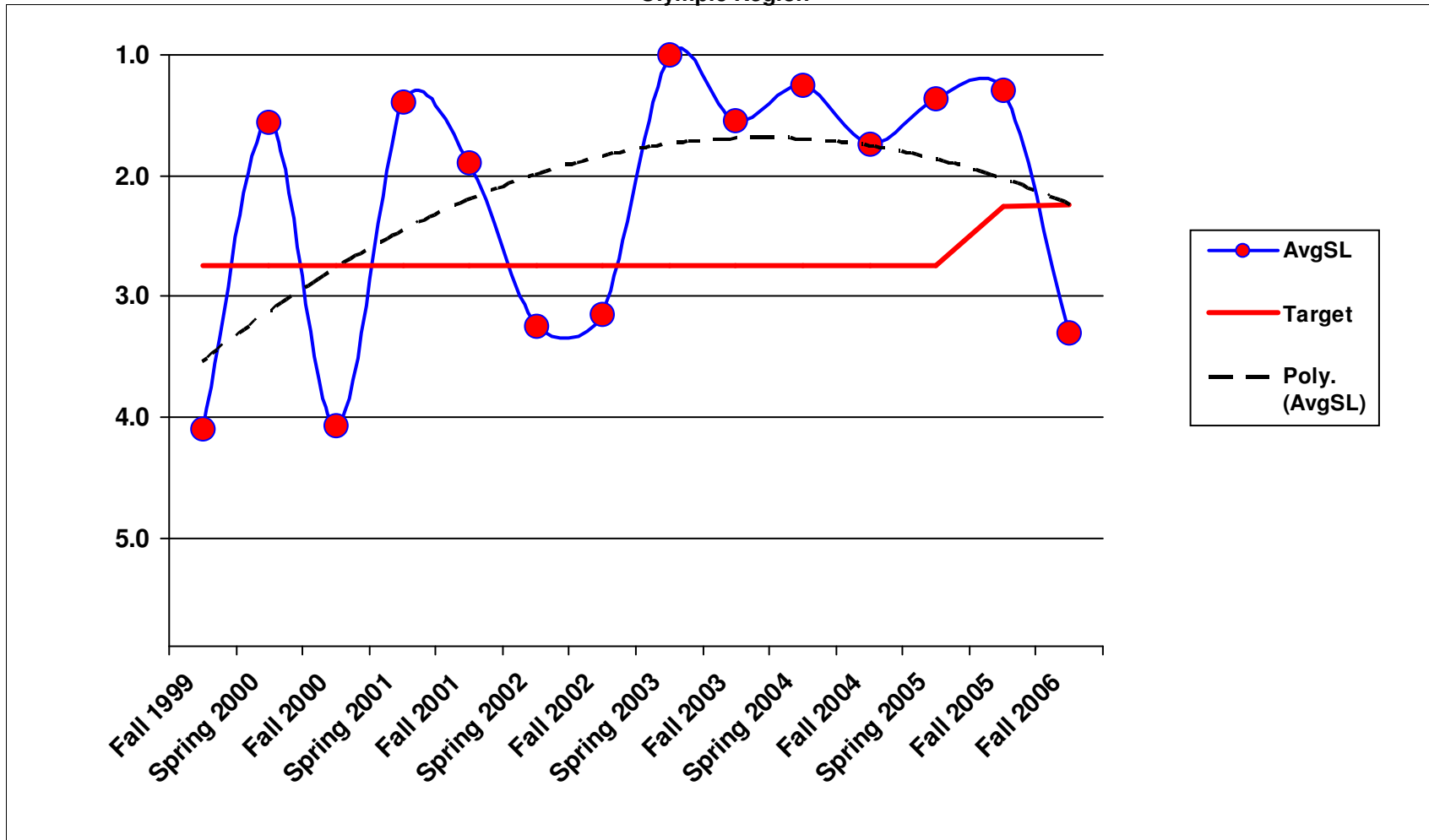
### 6A7 - Guardrail Maintenance Olympic Region



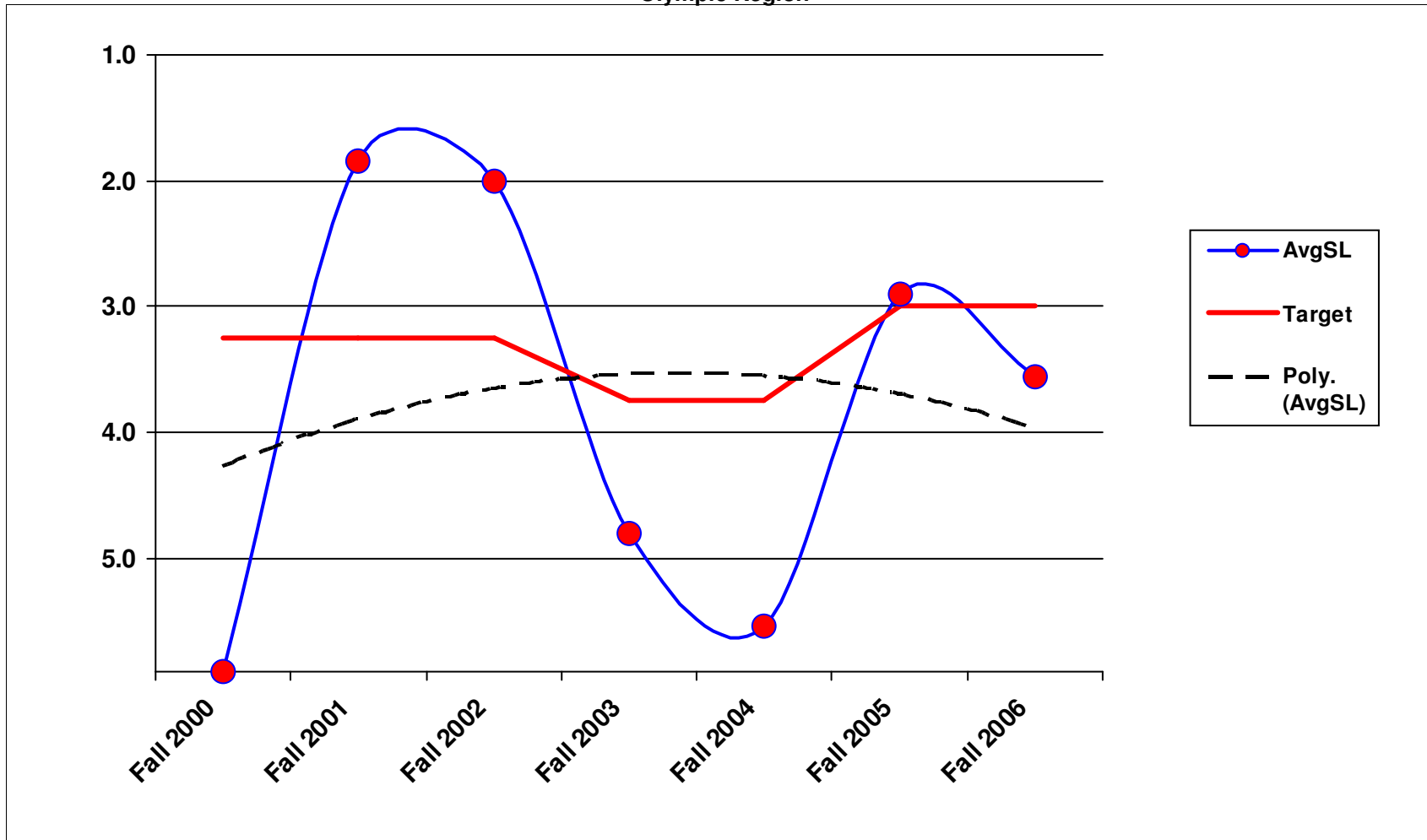
### 6B1 - Traffic Signal Systems Olympic Region



### 6B2 - Highway Lighting Systems Olympic Region

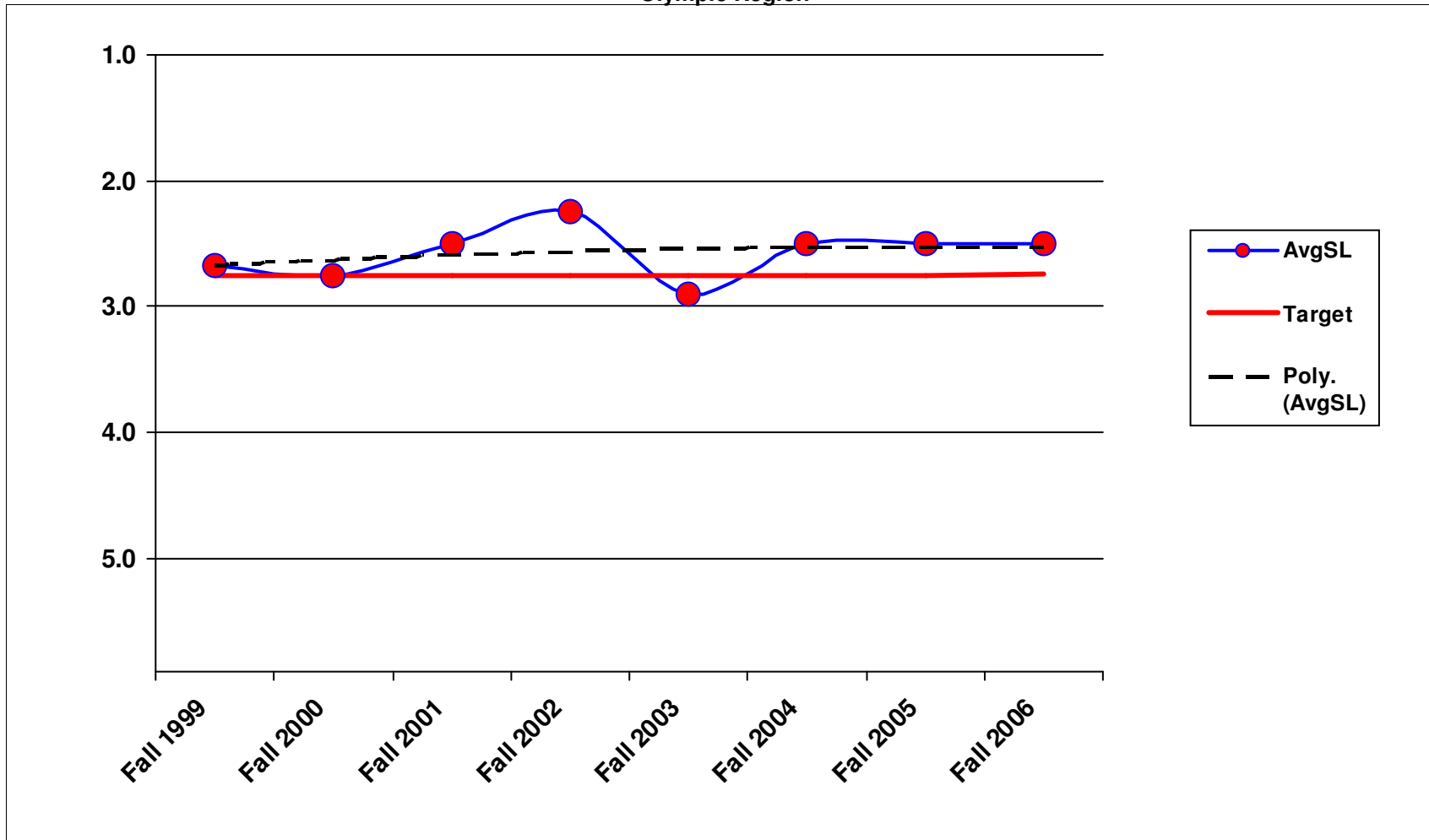


### 6B3 - Intelligent Transportaion Systems Olympic Region



1/23/2007

### 7B1 - Rest Area Operations Olympic Region



1/23/2007