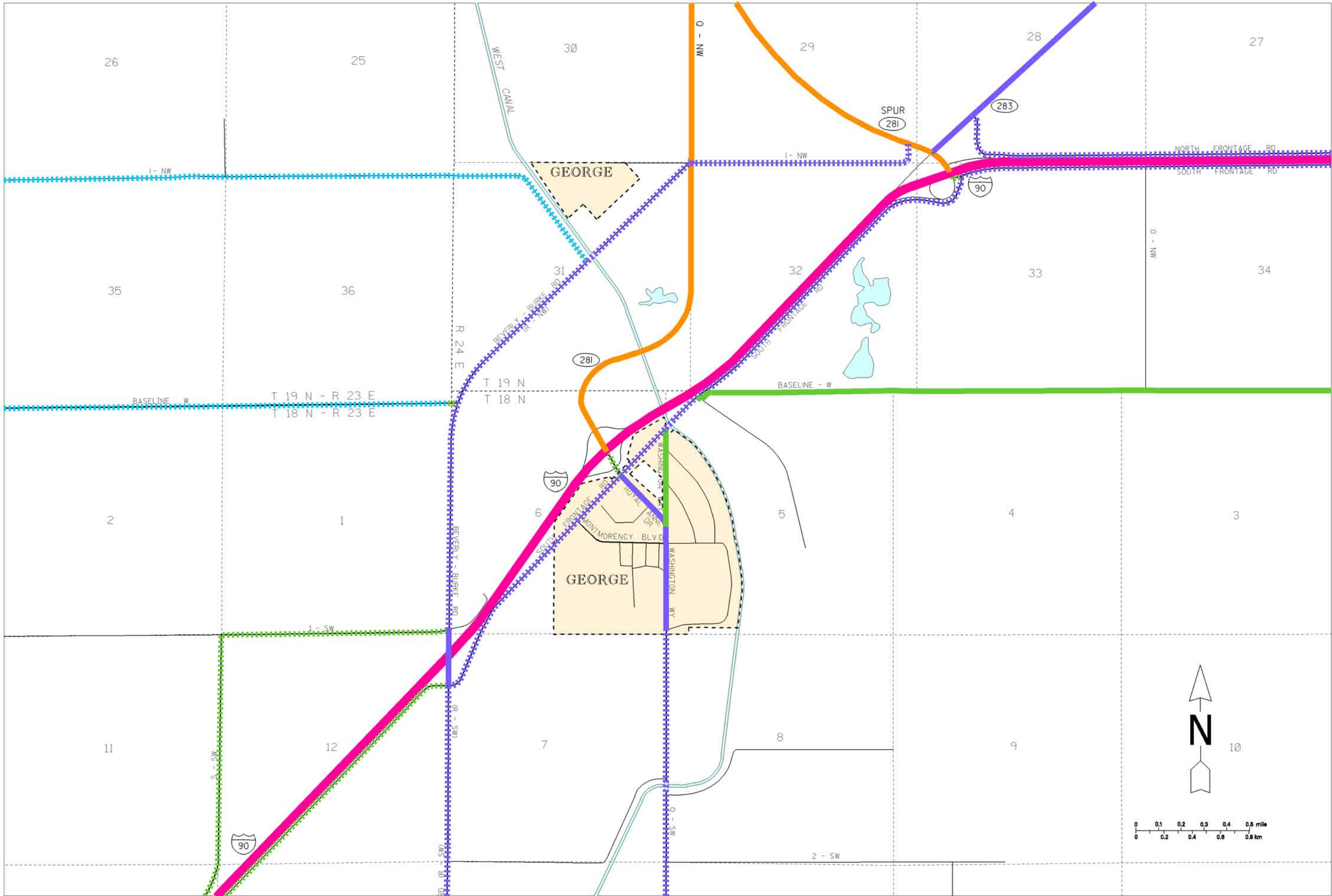


PLOT DATE: 30-NOV-2007

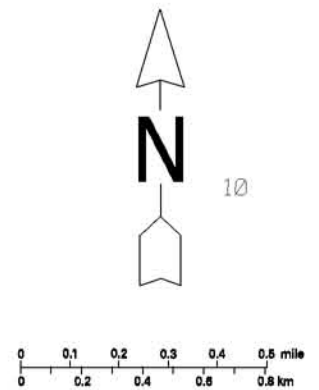
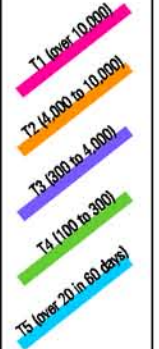


**Freight and Goods Transportation System**

**Roadways 2007**

WASHINGTON STATE DEPARTMENT OF TRANSPORTATION

TONNAGE CLASS  
T1 - T5  
ANNUAL TONS  
(in thousands)



**GEORGE**  
GRANT COUNTY