

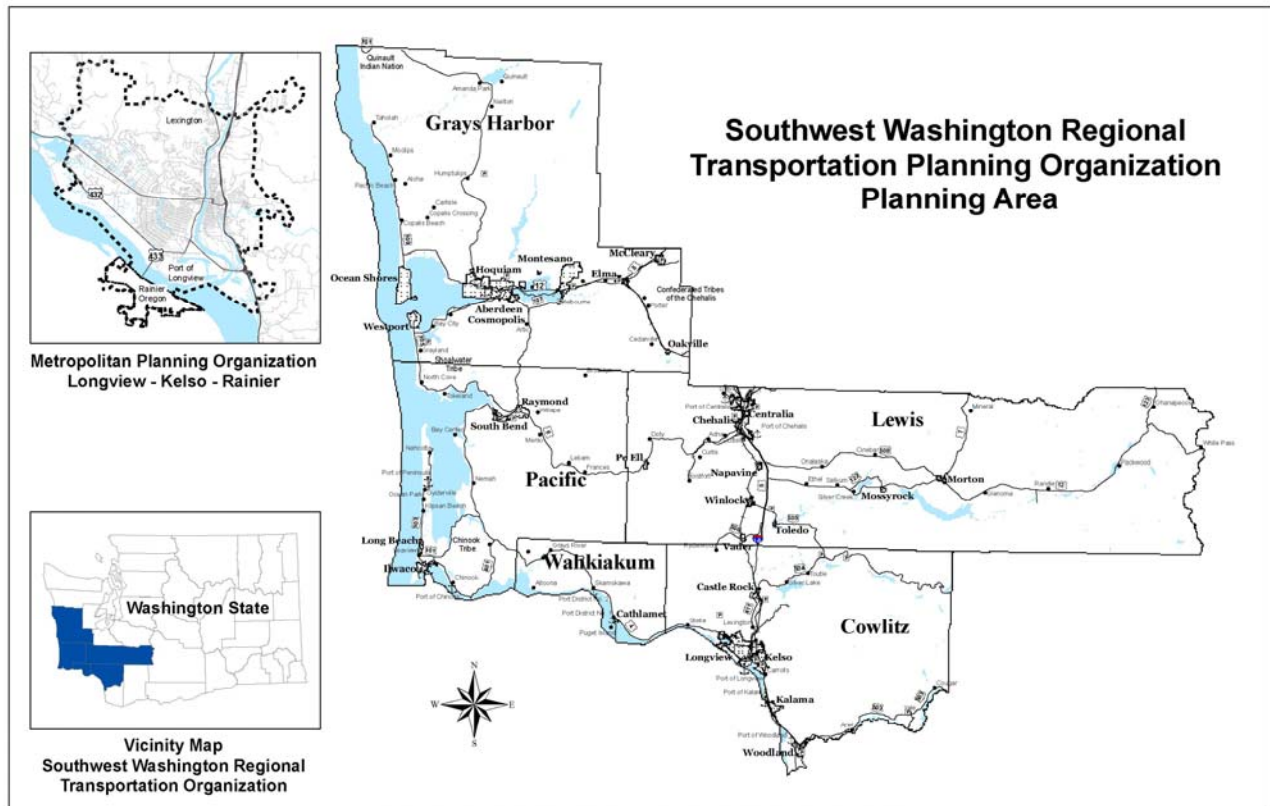
# UNIFIED PLANNING WORK PROGRAM (UPWP)

STATE FISCAL YEAR 2009

*July 1, 2008 to June 30, 2009*

*for the  
Longview-Kelso-Rainier MPO Area  
Metropolitan Planning Organization (MPO)*

*and the  
Southwest Washington  
Regional Transportation Planning Organization (RTPO)  
Cowlitz, Grays Harbor, Lewis, Pacific and Wahkiakum Counties*



Adopted May 22, 2008

*Cowlitz-Wahkiakum Council of Governments*

# UNIFIED PLANNING WORK PROGRAM (UPWP)

FOR

STATE FISCAL YEAR 2009

JULY 1, 2008 TO JUNE 30, 2009

*Adopted May 22, 2008*

## *Cowlitz-Wahkiakum Council of Governments*

207 4<sup>th</sup> Avenue North, Adm. Annex, Kelso, WA 98626

Phone: (360) 577-3041; Fax: (360) 425-7760

Email: [cwcog@cwcog.org](mailto:cwcog@cwcog.org); Website: [cwcog.org](http://cwcog.org)

The Cowlitz-Wahkiakum Council of Governments Unified Planning Work Program is jointly funded by the Washington State Department of Transportation, Federal Highway Administration, Federal Transit Administration and the local jurisdictions and agencies located within both the Metropolitan Planning Organization and Southwest Washington Regional Transportation Planning Organization.

COG ensures full compliance with Title VI of the Civil Rights Act of 1964 and the American Disabilities Act of 1990 by prohibiting discrimination against any person on the basis of race, color, national origin, sex or disabilities in the provision of benefits and services resulting from its federally assisted programs and activities. For more information, or to obtain a Title VI Complaint Form, call program coordinator at (360) 577-3041.

**Cowlitz-Wahkiakum Council of Governments**

A Resolution Adopting the Fiscal )  
Year 2009 Unified Planning Work )  
Program for Transportation )  
Planning

RESOLUTION NO. 08-09

WHEREAS, the Regional Policy Advisory Committee on Transportation (RPACT) recommends adoption of the Fiscal Year 2009 Unified Planning Work Program (UPWP) for the Longview-Kelso-Rainier MPO area and the Cowlitz-Wahkiakum portion for the SWRTPO area; and

WHEREAS, staff recommends adoption of the fiscal year 2009 UPWP for the SWRTPO area;

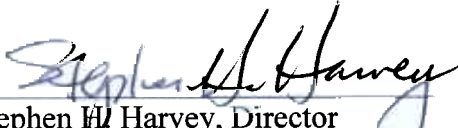
WHEREAS, funds for completing the work elements in the UPWP come from federal, state and local resources and are dependent upon action by the federal government and the Washington and Oregon legislatures;


WHEREAS, the work program includes activities to be carried out in and for the Longview-Kelso-Rainier, OR, MPO area and the Southwest Washington RTPO area; and

WHEREAS, the work program budget, as presented to the Council of Governments in coordination with the Washington State Department of Transportation, totals \$830,302 in federal, state and local funds;

NOW, THEREFORE, BE IT RESOLVED that the Fiscal Year 2009 UPWP, with a total budget of \$830,302, is hereby adopted.

PASSED AND APPROVED this 22<sup>nd</sup> of May, 2008

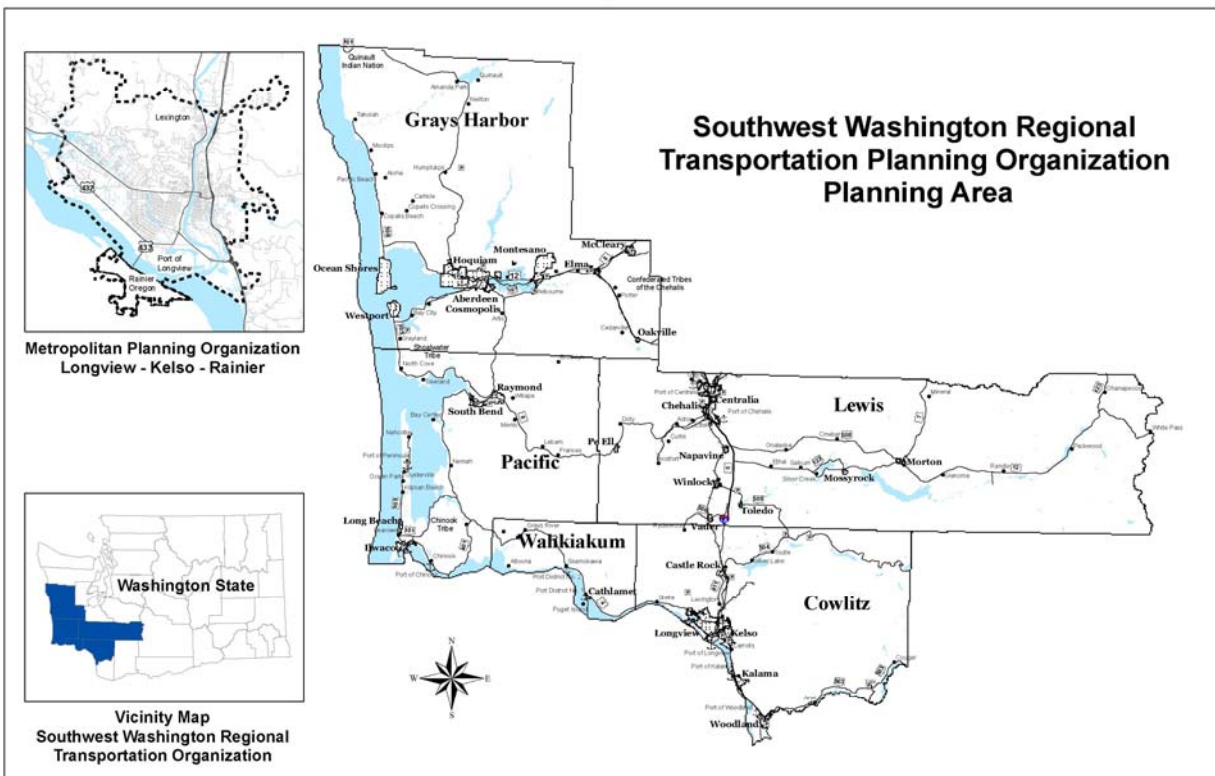
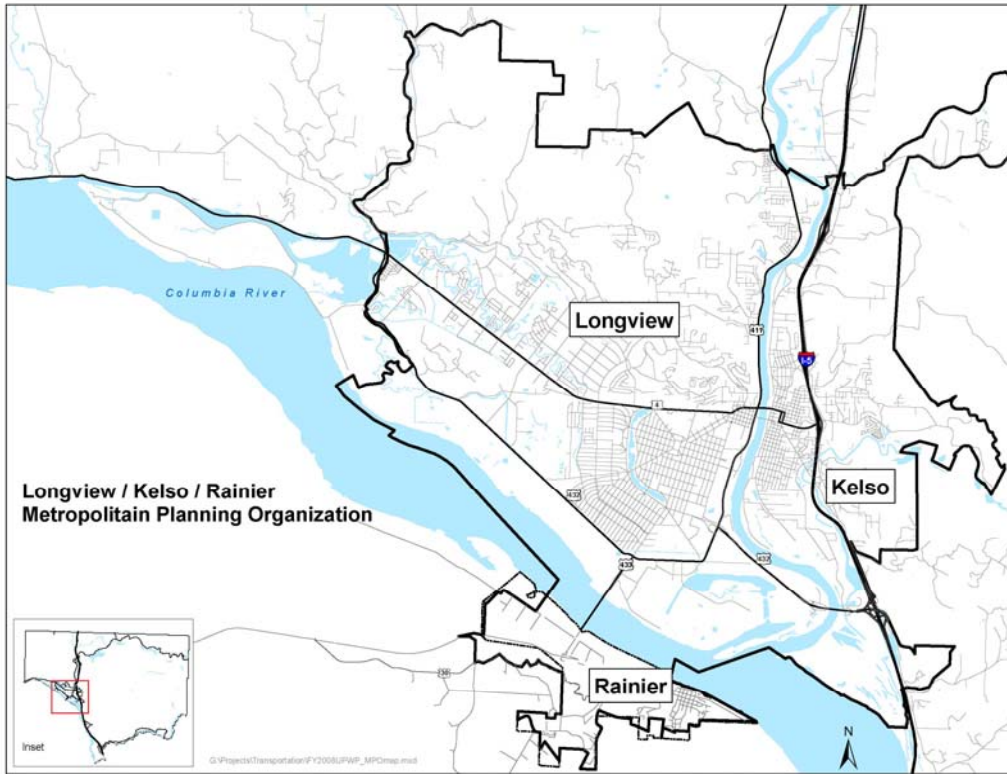
  
Stephen H. Harvey, Director

  
Kurt Anagnostou, Vice Chair

# TABLE OF CONTENTS

	PAGE
<b>INTRODUCTION</b>	
Background and Purpose .....	3
Integrated Planning .....	4
MPO/RTPO Structure .....	4
UPWP Required Elements .....	4
CWCOG Planning Priorities .....	5
 <b>DESCRIPTION OF MPO WORK ELEMENTS</b>	
Program Administration .....	7
Regional Planning .....	7
 <b>DESCRIPTION OF FUNDING SOURCES</b>	
FHWA Planning Grant (PL) .....	8
FTA Planning Grant (Section 5303) .....	8
State RTPO Group 01 Planning Grant .....	8
State RTPO Long Range Planning Funds (RTPO-LRP) .....	8
Special Award Planning Grants .....	8
Non-Federal Match .....	8
 <b>SFY 2009 WORK ELEMENTS</b>	
Program Administration.....	9
 <b>REGIONAL PLANNING</b>	
Short-Range Planning.....	11
Long-Range Planning .....	12
Data Management and Forecasting.....	14
 <b>FINANCIAL SUMMARY</b> .....	 16
 <b>UPWP AMENDMENT PROCESS</b> .....	 17
 <b>APPENDICES</b>	
Spreadsheet	
RTPO and MPO Organizational Chart	
Jurisdictions Represented in the SWRTPO - FY2009	
CWCOG Organization Chart	
SFY 2008 Accomplishments	
Planning Objectives for SFY 2009	
• MPO Area	
• SWRTPO Area by County	
• SWRTPO Regional-wide Planning Activities	
• Budget Worksheet	
 Washington State Department of Transportation 2009 UPWP (By Reference)	
• Southwest Region	

- Olympic Region



# INTRODUCTION

## **Background and Purpose**

The Cowlitz-Wahkiakum Council of Governments (CWCOG) is the federally designated lead planning agency for both the Longview-Kelso, Washington -Rainier-Oregon bi-state Metropolitan Planning Organization (MPO). The purpose of the CWCOG is to implement 23 USC Section 134 which requires that an MPO be designated for each urbanized area over 50,000 in population. This ensures that metropolitan area planning and programming processes incorporate all transportation modes, support community development, and respect societal goals.

The CWCOG is also the state-recognized lead planning agency for the five-county Southwest Washington Regional Transportation Planning Organization (SWRTPO). The five counties include Cowlitz, Grays Harbor, Lewis, Pacific and Wahkiakum counties. One of the purposes of an RTPO is to see that provisions of the Washington State Growth Management Act (RCW 47.80.20), as further defined under Washington Administrative Code (WAC) Section 468-86, are met. Both Lewis and Pacific counties operate under the State Growth Management Act.

The RTPO performs tasks similar to the MPO, but unlike the MPO, the RTPO provides technical assistance and works closely with the communities in the five rural counties. As the lead agency for both the MPO and SWRTPO, CWCOG recognized the need, the desirability, and the regional benefits that result from a collaborative forum for transportation planning and decision-making across the five counties. This has been especially important in the areas of public transportation, access to ports, rail and highway issues.

The Unified Planning Work Program (UPWP) is developed and approved locally, then submitted for state and federal approval in the third quarter of each state fiscal year for implementation at the beginning of the next State fiscal year. The purpose of this combined MPO/RTPO UPWP is to identify and describe transportation planning activities that will take place throughout the MPO and SWRTPO planning areas during State Fiscal Year 2009 (July 1, 2008 through June 30, 2009). The annual UPWP is a required statement of how state and federal funds will be used by the MPO/RTPO for transportation planning purposes.

The UPWP is based on state and federal transportation planning requirements, regional priorities, and annual emphasis areas. The intent of the work program is to provide an overview of general work elements, anticipated work products, and an estimated budget for the fiscal year. The state and federal grant amounts shown are based on WSDOT estimates provided to each MPO/RTPO.

## **Integrated Planning**

The planning and programming efforts of the CWCOG, MPO, and SWRTPO intersect in planning tasks fulfilling federal urban transportation planning and state regional planning requirements. Metropolitan transportation planning requirements must be fulfilled in order to be eligible for federal funding.

The UPWP is the tool used to direct these continuous, cooperative, and comprehensive planning efforts.

The UPWP provides the CWCOG with guidance in performing transportation-related tasks necessary to meet MPO and RTPO planning requirements. It lists all major work tasks to be completed in a given fiscal year.

## **MPO/RTPO Structure**

As the designated MPO and lead planning agency for the SWRTPO, the MPO/RTPO program is administered and staffed by the Cowlitz-Wahkiakum Council of Governments (CWCOG). The CWCOG transportation planners are responsible for carrying out most of the regional transportation planning activities. The CWCOG staff covers planning activities for Cowlitz, Wahkiakum, Lewis and Pacific counties. CWCOG funds the Grays Harbor Council of Governments (GHCOG) to carry out transportation planning activities for that area. The transportation planning staff receives direction from the organizations and committees in each of the counties for technical assistance and other services. The following organizations guide transportation planning activities for the MPO and/or SWRTPO areas:

- ◆ CWCOG: Regional Policy Advisory Committee on Transportation (both MPO and non-MPO areas of Cowlitz County and Wahkiakum County)
- ◆ Pacific Council of Governments (PCOG): Pacific County, four ports, cities and Shoalwater Bay Tribe
- ◆ GHCOG: Grays Harbor County, Port of Grays Harbor, cities and Quinault Indian Nation
- ◆ LCTSC: Lewis County Transportation Strategy Council – Lewis County, cities, two ports, Chehalis and Cowlitz Tribes

An overall organization chart for the CWCOG's transportation planning activities is found in the appendices.

## **UPWP Required Elements**

The CWCOG, as MPO for the Longview-Kelso-Rainier urban area, is responsible for providing a transportation planning process consistent with the planning factors outlined in SAFETEA-LU and WSDOT's work elements. In addition, the CWCOG coordinates its efforts with those of WSDOT's Southwest Region(SWR) and Olympic Region (OLR) Planning Offices.

Federal Metropolitan Planning Factors (SAFETEA-LU) are aimed at programs that:

- (a) Support the economic vitality of the metropolitan area especially by enabling global competitiveness, productivity, and efficiency.
- (b) Increase the safety of the transportation system for motorized and non-motorized users.
- (c) Increase the security of the transportation system for motorized and non-motorized users.
- (d) Increase the accessibility and mobility options available to people and for freight.
- (e) Protect and enhance the environment, promote energy conservation, improve quality of life, promote consistency between transportation improvements and State and local planned growth and economic development patterns.
- (f) Enhance the integration and connectivity of the transportation system, across and between modes for people and freight.
- (g) Promote efficient system management and operation.
- (h) Emphasize the preservation of the existing transportation system.

SFY 2009 WSDOT guidance for state planning funds:

1. Continue implementation of regional transportation and growth management planning.
2. Maintain consistency with Washington Transportation Plan (WTP) development and implementation (on-going).
3. Track the use of all state RTPO planning funds so WSDOT can report on RTPO activities and products.
4. Include anticipated contracts for consultant services in the UPWP; amend as needed to include summary scopes of work.

### **CWCOG Planning Priorities**

The planning priorities for CWCOG in SFY 2009 encompass federal, state, and self-directed values as outlined above. In order to provide a comprehensive and concurrent program for our member jurisdictions, these values are integrated throughout the entire planning process as follows:

#### Planning Level

- Actively participate in the implementation of the WTP, adding local value to this process.
- Ensure environmental considerations are incorporated, where appropriate, early in the planning process.
- Ensure issues of safety and related concerns are addressed early in the planning process, especially with regard to safety in school zones and at-grade railroad crossings.
- Ensure equity issues are addressed early in the planning process.
- Promote efficient system management and operations.
- Enhance the efficiency, integration, and connectivity of the transportation system, across and between modes, for people and freight.
- Increase the safety and security of the transportation system for motorized and non-motorized users.
- Support the development of ITS architecture to ensure projects entered into the MTIP/RTIP conform. Emphasize preservation of the existing transportation system.

- Address limited English proficiency (LEP) concerns as part of a public participation plan, where applicable.
- Ensure the CWCOC Metropolitan and Regional Transportation Plan, and member jurisdictions' GMA plans are consistent with each other, as required in RCW 47.80.023 and 47.80.030.

#### Programming Level

- Encourage strategic thinking among the membership by actively incorporating the values embodied within our strategic emphasis areas (outlined above) into programmed transportation projects.
- Provide a venue and policy context for collaborative policy formation and needs identification with local officials, especially in identifying and prioritizing needs in both the MPO and throughout the five-county SWRTPO area.
- Actively seek partnership opportunities with both WSDOT's Southwest and Olympic regions.
- Support the integration of environmental streamlining and the programming activities of the CWCOC on behalf of its member jurisdictions.
- Ensure that Title VI considerations such as access, environmental justice, and LEP concerns are addressed at the program level.
- Ensure consistent regional evaluation of transportation facilities and recognized regional corridors (RCW 36.70A).
- Ensure state and tribal government-to-government guidelines are incorporated into both planning and programming activities.
- Ensure safety and security issues relevant to regional transportation facilities are addressed early during the planning phase and implemented on a project-by-project basis where applicable, especially with regard to safety in school zones, and railroad at-grade crossings, as well as emergency evacuation routes for earthquakes, volcanic eruptions and tsunamis.
- Ensure LOS methodologies are used by cities and the county to provide regional consistency (RCW 36.70A).
- Monitor impacts to state highways resulting from land use changes initiated by member jurisdictions.
- Use best available data and methodology to identify deficiencies on our transportation network.

These priorities will allow the CWCOC to provide a planning process for the MPO/RTPO that supports the projects and strategies necessary to meet the needs and service expectations of the region, the metropolitan area, and our individual members.

## DESCRIPTION OF MPO WORK ELEMENTS

### Program Administration

Program administration purpose is to provide the administrative support required to manage and coordinate the overall MPO/RTPO program. The activities include office management, personnel activities, training, conferences, clerical support, administrative documents, record keeping, and coordination of activities.

### Regional Planning

Regional planning is composed of three elements; short-range planning, long-range planning, and data management and forecasting.

- Short-range planning functions support activities within approximately a six-year time horizon. Examples of short-range planning activities include transportation improvement programs and amendments; Surface Transportation Program (STP) regional prioritization procedures; annual UPWP development and amendments; coordination with public transportation providers; grant applications; and reviewing current development proposals for transportation impacts.
- Long-range planning functions support activities focused toward long-term transportation issues. Examples of long-range planning functions include development and updates of regional and metropolitan area plans; consistency reviews of local comprehensive plans; coordinating transportation system performance measurements; reviewing regional plans for consistency with the WTP; making recommendations for integrating WTP plan elements; and general alignment of regional planning policies and activities with state policies and activities.
- Data management and forecasting functions support both the long-range and short-range planning functions. Examples of data management activities include collecting and maintaining current and historical demographic information; GIS mapping; inventory of regional transportation facilities and services; as well as collection and analysis of traffic counts and collision information. Forecasting activities are primarily related to travel demand modeling.

## DESCRIPTION OF FUNDING SOURCES

### **FHWA Planning Grant (PL)**

Federal Highway Administration (FHWA) funding to metropolitan planning organizations (MPOs) for transportation planning activities. The local match ratio is 25.0%.

Estimated WA State PL funding for SFY 2009.....	\$119,269
Estimated WA State PL carry-forward from SFY 2008 .....	\$206,400
Estimated OR State PL funding for SFY 2009 .....	<u>\$ 1,600</u>
<b>TOTAL</b> Estimated FHWA PL funds available for SFY 2009 .....	<b>\$327,269</b>

### **FTA Planning Grant (Section 5303)**

Federal Transit Administration (FTA) funding to metropolitan planning organizations (MPOs) for transportation planning activities. The local match ratio is 25.0%.

<b>TOTAL</b> Estimated FTA 5303 funding for SFY 2009.....	<b>\$30,330</b>
---	-----------------

### **State RTPO Group 01 Planning Grant**

The state planning funds are distributed to each of the 14 RTPOs based on population. The state funds are intended for planning and coordination activities required under RCW 47.80. There is no local match requirement for this grant.

<b>TOTAL</b> Estimated State RTPO funding for SFY 2009 .....	<b>\$125,039</b>
--	------------------

### **State RTPO Long-Range Planning Funds (RTPO-LRP)**

Washington State legislature approved state funds for the 2007-2009 biennium to continue RTPO's long-range planning activities. The "enhanced" funding included approximately \$1 million statewide for RTPO involvement in the WTP update. There is no local match requirement for this grant.

Estimated RTPO-LRP carry-forward from SFY 2008.....	\$ 50,000
Estimated RTPO-LRP funding for SFY 2009 .....	<u>\$ 54,481</u>
<b>TOTAL</b> Estimated RTPO-LRP funding for SFY 2009 .....	<b>\$104,481</b>

### **Special Award Planning Grants**

COG received federal funds to conduct these two plans:

Estimated carry-forward from SFY 2008:

FHWA Grant - SR432 Interchange Access (TCSP) - Apprx. to be de-obligated .....	\$ 19,000
SAFETEA-LU / HPP-TPA Grant - Woodland Interchange .....	<u>\$135,000</u>
<b>TOTAL</b> Special Planning Grant funds available for SFY 2009 .....	<b>\$154,000</b>

### **Non-Federal Match**

Federal funding sources usually require that non-federal funds be used to match federal grants. Different funding programs require different match percentages. CWCOG's local matching funds come from an annual assessment of both MPO and RTPO member jurisdictions. The assessment is based on a combination of population and STP Regional funding distribution. Community Transit contributes \$7,000+/- annually toward the local match of FTA Section 5303 funding.

Estimated non-federal match for SFY 2009:

WA State FHWA (PL) 25.0% match .....	\$81,417
OR State FHWA (PL) 11.5% match .....	\$ 183
WA State FTA (5303) 25.0% match .....	<u>\$ 7,583</u>
<b>TOTAL</b> Estimated non-federal match needed for SFY 2009* .....	<b>\$89,183</b>

\* Note: WA State FHWA (PL) match is provided by local governmental agencies. OR State FHWA (PL) match is provided by Oregon State Department of Transportation. Match for FTA is provided by local CTA. See Financial Summary on page 21.

## SFY 2009 WORK ELEMENTS

### I. Program Administration

**A. Purpose:** To provide the administrative support needed to manage and coordinate the MPO/RTPO transportation planning program.

**B. Work Tasks:** Core functions that are typically performed under this work element include, but are not limited to:

- General management of the MPO/RTPO program, office, and staff.
- Supervision of CWCOG staff and contracted services.
- Preparation and maintenance required of administrative documentation and records.
- General clerical support including correspondence, meeting agendas, and minutes.
- Preparation of contracts and work agreements for contracted services, projects, and funding.
- Development of staff training resources for Title VI in collaboration with WSDOT's Office of Equal Opportunity.

In order to perform these functions, CWCOG must also perform the following associated tasks:

- Coordination of activities between CWCOG, supporting agencies, local participating agencies, and other agencies and organizations.
- Attendance of staff meetings, public hearings, local council meetings, conferences, and training activities.
- The Executive Director, as CWCOG Title VI Coordinator, will monitor and annually review CWCOG Title VI responsibilities as part of its annual report.
- The Executive Director, as CWCOG Title VI Coordinator, will take reasonable action to ensure member jurisdictions comply and implement Title VI provisions in the development of their Transportation Improvement Programs (TIP).
- Update computer hardware, software, and communications technology.

**C. Anticipated Products:** The basic products are the documents and support services, which are necessary to continue a forum for cooperative decision making in both the MPO and SWRTPO areas. Specific products may include, but are not limited to:

- Calendar year budget.
- Annual Title VI accomplishments report.
- Agendas, notices, and other meeting materials for RPACT, PCOG, MPO TAC, and special subcommittee meetings.
- Monthly CWCOG newsletter articles.
- Mailing lists.
- Updated web pages.
- Monthly billings and accounting summaries.
- Annual indirect cost plan.
- Bi-annual SWRTPO newsletter.
- Annual UPWP report.

**D. Agency Responsibilities:** CWCOG provides office space, accounting, payroll, and support services to complete the tasks in these work elements.

<b>PROGRAM ADMINISTRATION (Codes 021 &amp; 022)</b>	
<b>ESTIMATED COST AND FUNDING SOURCES</b>	
WA State FHWA Planning Grant (PL)	\$130,267
WA State FTA Planning Grant (Section 5303)	12,132
OR State FHWA Planning Grant (PL)	640
OR State Dept of Transportation Match	73
WA State FHWA / FTA Local Match	35,600
<b>Total Cost Estimate</b>	<b>\$178,712</b>

## REGIONAL PLANNING

### Short-Range Planning

- A. Purpose:** To participate in the process of development, review, and approval of various short-range (within six years) planning activities necessary to maintain a continuing, comprehensive, and cooperative transportation planning process.
- B. Work Tasks:** Core functions which are typically performed under this work element include, but are not limited to:
- Prepare Unified Planning Work Program (UPWP) and its amendments.
  - Prepare the Metropolitan and Regional Transportation Improvement Programs (MTIPs/RTIPs) and their amendments.
  - Perform consistency review of Lewis and Pacific County jurisdictions' transportation elements of their GMA plans when such plans are due to be updated, including reviewing level of service (LOS) methodologies used by local jurisdictions.
  - Prepare documentation for MPO certification and work with WSDOT and FHWA to ensure it is maintained.
  - Respond to emerging current transportation issues and provide public participation venues in response to these issues.
  - Complete biennial review of the regional transportation section of the CWCOG Metropolitan and Regional Transportation Plan.
  - Administer Surface Transportation Program (STP) Regional funding distribution process for Cowlitz County and monitor the process for the remaining four counties in SWRTPO.
  - Participate in economic development forums and/or training opportunities addressing such issues as freight mobility, Title VI, transit, and system security and other relevant topics as they are made available, including climate change. Climate change has quickly emerged as a substantive policy discussion in the legislative and transportation community. CWCOGG is participating in committee work in cooperation with WSDOT and other MPOs and RTPOs around the state in an effort to be involved in, and help shape policy development related to transportation policy and funding priorities. Depending on how this topic progresses, CWCOG may pursue an update to the Metropolitan Transportation Plan to address climate change strategies in a manner that fits the concerns and opportunities in our region.
  - Continue to support transit participation in planning process through membership on MPO and SWRTPO Committees (TAC).
  - Support the efforts of the transit systems and non-profits providing transit in their efforts to increase ridership, system efficiencies, and access.
  - Work in cooperation within the five-county region to identify needs and solutions for community human service-based transportation, concentrating on rural and small city transit service.
  - Assist the Cowlitz Transit Authority in the development of its long-range strategic plan for sustainability and growth.

In order to perform these tasks, CWCOG must also perform the following associated tasks:

- Development and monitoring of the UPWP.
- Staff support for Executive Committees, TAC, and subcommittees.
- Ongoing public outreach efforts.
- Responses to public and agency inquiries.
- Inter- and intra-regional coordination.
- Attendance at training sessions.
- Response to emerging issues.
- Miscellaneous grant application assistance.

**C. Anticipated Products:** Work products for SFY 2009 may include, but are not limited to:

- SFY 2010 Unified Planning Work Program.
- 2009-2012 Metropolitan & Regional Transportation Improvement Program (MTIP/RTIP).
- Coordinated Public Transit - Human Services Transportation Plan for updated project list for five-county SWRTPO area, including transit agencies and non-profits.
- STP Regional funding distribution.
- Transportation analysis of local development proposals and land use actions, as needed.

**D. Agency Responsibilities:** CWCOG staff has the primary responsibility for the development, review, and revision of regional planning documents. Jurisdictions across the five-county SWRTPO area, WSDOT, and transit service providers submit copies of the Six-Year Transportation Improvement Programs to CWCOG in order to facilitate development of the overall metropolitan and regional TIPs. Document approval authority lies with CWCOG and SWRTPO Boards, WSDOT, FHWA, and FTA.

### **Long-Range Planning**

**A. Purpose:** To perform work related to long-range (beyond six years) planning for future development, transportation systems, and air quality.

**B. Work Tasks:** Core functions typically performed under this work element include, but are not limited to:

- Update and maintain a 20-year Metropolitan and Regional Transportation Plan (MTP/RTP).
- Monitor and facilitate compliance with GMA requirements relative to transportation among member jurisdictions planning under GMA.
- Ensure that transportation facilities and services of statewide significance (RCW 47.04.140) are included in member jurisdictions' GMA plans and the regional transportation plan, as applicable.
- Participate in the continued development of the Coordinated Public Transit-Human Services Transportation Plan.
- Develop and utilize public outreach venues and opportunities for long-range planning public involvement.
- Provide support for local and regional long-range travel demand management programs.

- Research and analyze issues identified in the updated MPO/RTPO Transportation Plan in light of emerging economic, environmental, and land use issues.
- Participate in the development and review of the WTP and HSP Update. The CWCOG, on behalf of member jurisdictions and agencies, will work with the WSDOT's Strategic Planning & Programming Division and both WSDOT regions planning offices in this endeavor. Tasks may include, but are not limited to, the following:
  1. Participation in project prioritization workshops.
  2. Review draft and final 10-year investment plan(s).
  3. Participation in development of performance measures to track plan accomplishments.
  4. Coordination of the CWCOG MPO/RTPO transportation plan during its periodic update to ensure its consistency with the themes, schedules, and programs identified in the WTP.
  5. Communicate with and educate legislators and other decision-makers in the SWRTPO five-county area on the WTP and other relevant policy issues.
  6. Coordinate with both WSDOT region in the development and implementation of the WTP to ensure concurrent and consistent integration with local and regional plans.
  7. Identify and incorporate regional and local corridor needs, along with associated goals and objectives, into the regional plan update.

In order to perform these functions, CWCOG must also perform the following associated tasks:

- Ongoing public outreach and education programs.
- Staff support for policy and technical committees and subcommittees in both the MPO and SWRTPO areas.
- Responses to public and agency inquiries.
- Inter- and intra-regional coordination.
- Attendance at training sessions, regional meetings, and conferences.
- Coordination with local bicycle, pedestrian, transit, and freight transportation stakeholders.

**C. Anticipated Products:** Work products for SFY 2009 for both the MPO and SWRTPO areas may include, but are not limited to:

- Continued coordination of SR 432 Rail Realignment Feasibility Analysis
- Development of Transportation System Plan for MPO Area.
- Completion of Woodland Area Transportation Infrastructure Strategic Plan
- Participate in updates to the Coordinated Public Transit-Human Services Transportation Plan across the SWRTPO five-county area and incorporate into the MTP/RTP as appropriate
- Participate in development and updates to various modal and issue plans in cooperation with WSDOT Southwest and Olympic regions
- Documents and reports in support of the WSDOT Highway System Plan (HSP) update and investments prioritization.
- Technical assistance to Lewis County Transportation Strategy Council
- Completion of SR 109 Scenic Byway Corridor Management Plan.

The long-range SWRTPO funds will be allocated to two elements in the proposed work program (see appendix):

- ▶ Completion of the Metropolitan Transportation Plan and Regional Transportation Plan (MTP/RTP) (\$25,000)
- ▶ Planner position for Lewis County Transportation Strategy Council (\$25,000)

**D. Agency Responsibilities:** CWCOG staff will be responsible for completion of the work program. The work program will be conducted with collaboration and consultation of the various committees responsible for oversight and consensus in both the MPO and SWRTPO areas. CWCOG will continue to support long-range transportation planning activities in Grays Harbor and Lewis counties. The partnership developed between CWCOG and these counties includes an annual contract and work program. From SWRTPO funds, Grays Harbor receives \$35,000 and Lewis County receives \$25,000 annually. (See appendix)

### **Data Management and Forecasting**

**A. Purpose:** To conduct data collection and forecasting activities which support transportation planning functions.

**B. Work Tasks:** Core functions which are typically performed under this work element include, but are not limited to:

- Data collection, analysis and management, and technical support for coordination and collaboration with planning partners and member jurisdictions.
- Development, application, and maintenance of the regional travel demand model for the MPO area.
- Support of technical capabilities through on-going equipment and software purchase and maintenance.
- Creation of a demographic profile for Environmental Justice (EJ) purposes, as needed.
- Development of a public involvement plan that will allow creation of Limited English Proficiency (LEP) outreach strategies, as needed.
- Development of a user/beneficiaries analysis in compliance with the provisions of CWCOG's Title VI Implementation Plan whenever public participation is involved.
- Expansion and refinement of GIS capabilities and related analysis tools.
- Modification of the MPO area traffic model, as needed, to forecast transportation-related effects of growth in the urban area.
- Collection of data and development of traffic count program for MPO area for update and calibration of the traffic model.
- Maintenance of databases related to the metropolitan traffic model and supporting GIS systems.
- Standardization of database collection and management and improvement of methods of analysis.
- Utilize the integrative capabilities of GIS to analyze the relationships between, and effects of, land use on the regional transportation system.

In order to perform these functions, CWCOG must also perform the following associated tasks:

- Calibrate base and forecast years for the transportation model for use in assessing current and long-range transportation and land use issues and opportunities.
- Refinement of regional traffic analysis zones (TAZs) as needed.
- Utilize most recent population forecasts from the state Office of Financial Management (OFM) for demographic and socioeconomic analysis.
- Assist in preparations for Census 2010.
- Purchase and maintain hardware and software required to perform technical tasks.
- Provide regional travel projections in support of local transportation planning efforts.
- Attend technical training sessions, conferences, and regional meetings.
- Coordinate with federal, state, and local agencies and private consultants to ensure consistency of data and models being used.

**C. Anticipated Products:** Work products for SFY 2009 may include, but are not limited to:

- Thematic maps for transportation and land use planning, as needed.
- Transportation model plots for various planning scenarios.
- Demographic data reports and analyses.
- Transportation model updates and documentation.
- Transportation data and metadata structures including, but not limited to, travel demand, congestion relief, and air quality modeling.
- Traffic projections for various transportation alternatives developed as part of selected corridor study efforts in partnership with WSDOT.
- Demographic profiles.
- Title VI service area maps, as needed for transit and other planning activities.
- Memoranda and correspondence supporting local use of the region-wide transportation model as needed.

**D. Agency Responsibilities:** CWCOG staff has the primary responsibility for carrying out this task and coordinating any activities involving other agencies. WSDOT will provide a limited level of technical assistance as needed.

<b>REGIONAL PLANNING (Codes 023-29)</b>	
<b>ESTIMATED COST AND FUNDING SOURCES</b>	
WA State FHWA Planning Grant (PL)	\$195,402
WA State FTA Planning Grant (Section 5303)	18,198
OR State FHWA Planning Grant (PL)	960
OR State Dept of Transportation Match	110
State RTPO Planning Grant	125,039
State RTPO Long-Range Planning Grant (RTPO-LRP)	104,481
WA State FHWA Awarded TCSP-TCSP Grant	19,000
WA State FHWA Awarded SAFETEA-LU/HPP-TPA Grant	135,000
WA State FHWA / FTA Local Match	53,400
<b>Total Cost Estimate</b>	<b>\$651,590</b>

## FINANCIAL SUMMARY

### Funding Sources by Program Administration and Regional Planning for SFY 2009 (ESTIMATES)

<b>Funding Sources</b>	<b>Program Administration</b>	<b>Regional Planning</b>	<b>TOTAL</b>
WA State FHWA Planning Grant (PL)	\$130,267	\$195,402	<b>\$325,669</b>
WA State FTA Planning Grant (Section 5303)	12,132	18,198	<b>30,330</b>
OR State FHWA Planning Grant (PL)	640	960	<b>1,600</b>
OR State Dept of Transportation Match	73	110	<b>183</b>
State RTPO Planning Grant		125,039	<b>125,039</b>
State RTPO Long-Range Planning Grant (RTPO-LRP)		104,481	<b>104,481</b>
WA State FHWA Awarded TCSP-TCSP Grant		19,000	<b>19,000</b>
WA State FHWA Awarded SAFETEA-LU/HPP-TPA Grant		135,000	<b>135,000</b>
WA State FHWA / FTA Local Match	35,600	53,400	<b>89,000</b>
<b>Totals</b>	<b>\$178,712</b>	<b>\$651,590</b>	<b>\$830,302</b>

## **UPWP AMENDMENT PROCESS**

Amendments to the UPWP are required when there is a change to either the work program, an addition to the work program and a budget revision resulting from changes in the work program.

All amendments requiring a program change must be approved by the CWCOG MPO/RTPO Board and processed through the WSDOT's Policy Development and Regional Coordination Branch. Amendments involving federal funds may need to be reviewed and approved by FHWA and FTA.

## **APPENDICES**



**2009 UNIFIED PLANNING WORK PROGRAM  
Cowlitz-Wahkiakum Council of Governments**

<b>Focus:</b>	<b>Guidance:</b>	<b>UPWP Work Element:</b>	<b>Page #</b>
<b>RTPO / Regional and Growth Management Planning</b>	<ul style="list-style-type: none"> <li>Prepare and periodically update a transportation strategy for the region.</li> </ul>	The Regional Transportation Planning work element is comprised of work in the areas of short-range planning, long-range planning, and data development and forecasting and is a coordinated effort throughout the 5 county region	11
	<ul style="list-style-type: none"> <li>Prepare a regional transportation plan.</li> </ul>	Maintain 20+ Year Regional Transportation Plan.	12
	<ul style="list-style-type: none"> <li>Certify that the transportation elements of comprehensive plans adopted by counties, cities, and towns within the region reflect guidelines and principles that are consistent with the adopted regional transportation plan.</li> </ul>	Continue to participate in the development and review of proposed changes to land use or transportation elements of local comprehensive plans to ensure proposed changes maintain consistency with the Regional Transportation Plan and long-range regional forecasting assumptions.	11-12
	<ul style="list-style-type: none"> <li>Where appropriate, certify that county-wide planning policies and the regional transportation plan are consistent.</li> </ul>	Continue to support adopted Countywide Planning Policies through the regional transportation planning program and its associated forecasting processes.	11-12
	<ul style="list-style-type: none"> <li>Develop a six-year regional transportation improvement program in cooperation with the WSDOT, public transportation providers, and local governments in the region.</li> </ul>	Develop an annual (2009-2012) five-county, fiscally constrained four-year Transportation Improvement Program (TIP) to include regionally significant city and county road projects, transit capital projects, and WSDOT transportation projects for the Longview-Kelso-Rainier urban area. Also, coordinate and forward any subsequent TIP amendments to WSDOT for inclusion in the STIP.	12
	<ul style="list-style-type: none"> <li>Review level of service methodologies used by cities and counties to promote consistent regional evaluation of transportation facilities and corridors.</li> </ul>	Continue to coordinate with the Technical Advisory Committee on application of level of service methodologies used at the regional level (MPO area, I-5 corridor and Lewis County) to ensure consistent and meaningful interpretation of results.	13
	<ul style="list-style-type: none"> <li>Work with cities, counties, transit agencies, WSDOT, and others to develop level of service standards or alternative transportation performance measures.</li> </ul>	Continue to coordinate with area transportation providers (as identified in the Human Services Transportation Coordination Plan) and local trail development committees to evaluate potential alternative transportation modes.	12
<b>RTPO / Long-Range Planning</b>	<ul style="list-style-type: none"> <li>Prepare corridor plans or studies on facilities of statewide and regional significance.</li> </ul>	Continue assistance with WSDOT to implement projects in Lewis County. Continue assistance with the Lewis County Transportation Strategy Council to determine strategic planning for I-5 corridor network improvements. SR 505 Corridor RDP with SWR WSDOT, Lewis County, Winlock and Toledo.	Appendix
	<ul style="list-style-type: none"> <li>Participate in development, implementation, and statewide activities related to the Highway System Plan and other modal plans as appropriate.</li> </ul>	Implementing the WTP will require continued participation by the SWRTPO. Assist WSDOT on any/all responsibilities relating to the plan as it applies to the regional system.	13

Focus:	Guidance:	UPWP Work Element:	Page #
	<ul style="list-style-type: none"> <li>Coordinate efforts with neighboring RTPOs on common issues, such as identification of all-weather road systems and rail issues.</li> </ul>	Continue to coordinate with Lewis County and TRPC in evaluating issues and opportunities associated with mobility and economic development between Chehalis-Centralia and the Grand Mound urban growth area.	Appendix
	<ul style="list-style-type: none"> <li>Collect, model, and analyze data applicable to the statewide plan, modal and issue plans, and the regional long range plan.</li> </ul>	Continue to coordinate studies through SWRTPO and MPO activities, and provide appropriate technical support to ensure consistency with the long-range regional plan and modeling assumptions.	12-13
	<ul style="list-style-type: none"> <li>Communicate with elected officials and conduct public involvement in support of the statewide plan, modal and issue plans, and the regional long-range plan.</li> </ul>	Continue to inform CWCOG, SWRTPO and MPO/TAC policy makers about the studies being conducted in the region, and participate as appropriate in the associated public involvement processes. Continue to develop the CWCOG website as a tool to keep local officials and the public informed.	12-13
	<ul style="list-style-type: none"> <li>Funding augmentation to continue implementing regional transportation and growth management planning.</li> </ul>	Continue to coordinate with local agencies and member jurisdictions to augment base program funds to conduct additional work which will further enhance this region's implementation of state and federal planning requirements.	8

**Meeting Information:**

CWCOG Board: Meets 4<sup>th</sup> Thursday of every month

Regional Policy Advisory Committee on Transportation (RPACT): Meets 3<sup>rd</sup> Wednesday of every month

MPO Technical Advisor Committee: Meets 4<sup>th</sup> Thursday of every month

Grays Harbor Council of Governments (GHCOG): Monthly

Pacific County Council of Governments (PCOG): Meets 4<sup>th</sup> Wednesday of every month

Lewis County Transportation Strategy Council (LCTC): As needed

**Additional Activities:**

National Association of Regional Councils (NARC): Staff serve on both Freight and Rail committees

Long-Term Air Transportation Study (LATS): Staff served on Technical Advisory Committee for Southwest Region

North Cowlitz River Trail Loop: Staff provides technical assistance to the group in formation of new regional trail

**Cowlitz-Wahkiakum Council of Governments  
RTPO & MPO Organizational Chart**

<b>Grays Harbor Council of Governments</b>
Cities of Grays Harbor County Grays Harbor County Grays Harbor EDC Grays Harbor PUD Port of Grays Harbor Grays Harbor Transit Quinault Indian Nation Confederated Tribes of the Chehalis WSDOT – Olympic Region Timberland Regional Library

<b>Lewis County Transportation Strategy Council</b>
Cities of Lewis County Lewis County Cowlitz Tribe Port of Chehalis Port of Centralia Twin Transit

<b>Pacific Council of Governments</b>	
Cities of Pacific County Pacific County Port of Ilwaco Port of Willapa Harbor Pacific County PUD Pacific Transit Shoalwater Tribe WSDOT – SW Region	Port of Peninsula Port of Chinook Pacific County EDC

<b>Regional Policy Advisory Committee on Transportation (MPO Area)</b>
<ul style="list-style-type: none"> <li>• Longview – Kelso – Rainier MPO</li> <li>• Cowlitz County – Non-MPO</li> <li>• Wahkiakum County</li> </ul>
City of Longview City of Kelso Cowlitz County Port of Longview Cowlitz Transit Authority City of Rainier, Oregon Columbia County, Oregon Port of St. Helens WSDOT – SW Region ODOT – Region 1 Cowlitz Tribe Cowlitz EDC Rainier Economic Development Council Kelso-Longview Chamber of Commerce City of Castle Rock City of Kalama City of Woodland Port of Kalama Port of Woodland Wahkiakum County Town of Cathlamet Wahkiakum Port District No. 1 Wahkiakum Port District No. 2

## Jurisdictions Represented in the SWRTPO - FY 2009

### Regional Planning Agencies

Cowlitz-Wahkiakum Council of Governments (CWCOG)  
Grays Harbor Council of Governments (GHCOG)  
Pacific Council of Governments (PCOG)  
Lewis County Transportation Council (Proposed)

### State Departments of Transportation

SW Region, Vancouver, Washington State Department of Transportation  
Olympic Region, Tumwater, Washington State Department of Transportation  
Region 1, Portland, Oregon Department of Transportation

### Federal Department of Transportation

Federal Highway Administration (FHWA)  
Federal Transit Administration (FTA)

### Counties

Cowlitz County  
Grays Harbor County  
Lewis County  
Pacific County  
Wahkiakum County

### Port Districts

Port of Centralia  
Port of Chehalis  
Port of Chinook  
Port of Grays Harbor  
Port of Ilwaco  
Port of Kalama  
Port of Longview  
Port of Peninsula  
Port of Willapa Harbor  
Port of Woodland  
Wahkiakum Port District No. 1  
Wahkiakum Port District No. 2

### Economic Development Councils

Cowlitz Economic Development Council  
Grays Harbor Economic Development Council  
Lewis County Economic Development Council  
Lower Columbia Economic Development Council  
Pacific County Economic Development Council  
Columbia Pacific Resource Conservation & Economic Development District

### Transit Authorities

Cowlitz Transit Authority  
Grays Harbor Transit Authority  
Twin Transit Authority  
Pacific Transit System

### (Non-Profit/Non-Traditional Transit Providers)

LEWIS Mountain Transit  
Lower Columbia Community Action Program  
Coastal Counties Community Action Council  
Wahkiakum County  
Cowlitz Tribe

### Tribal Governments

Cowlitz Tribe  
Quinalt Indian Nation  
Confederated Tribes of the Chehalis  
Shoalwater Bay Tribe

### Cities

Castle Rock	Elma	Longview	Oakville	Toledo
Cathlamet	Hoquiam	McCleary	Ocean Shores	Vader
Centralia	Ilwaco	Montesano	Pe Ell	Westport
Chehalis	Kalama	Morton	Rainier, OR	Winlock
Cosmopolis	Kelso	Mossyrock	Raymond	Woodland
Long Beach	Napavine	South Bend		

# Cowlitz-Wahkiakum Council of Governments Organizational Chart - 2008

## CWCOG MEMBERSHIP

### General Members

- ♦ City of Castle Rock
- ♦ City of Kalama
- ♦ City of Kelso
- ♦ City of Longview
- ♦ City of Woodland
- ♦ Cowlitz County
- ♦ Town of Cathlamet
- ♦ Wahkiakum County

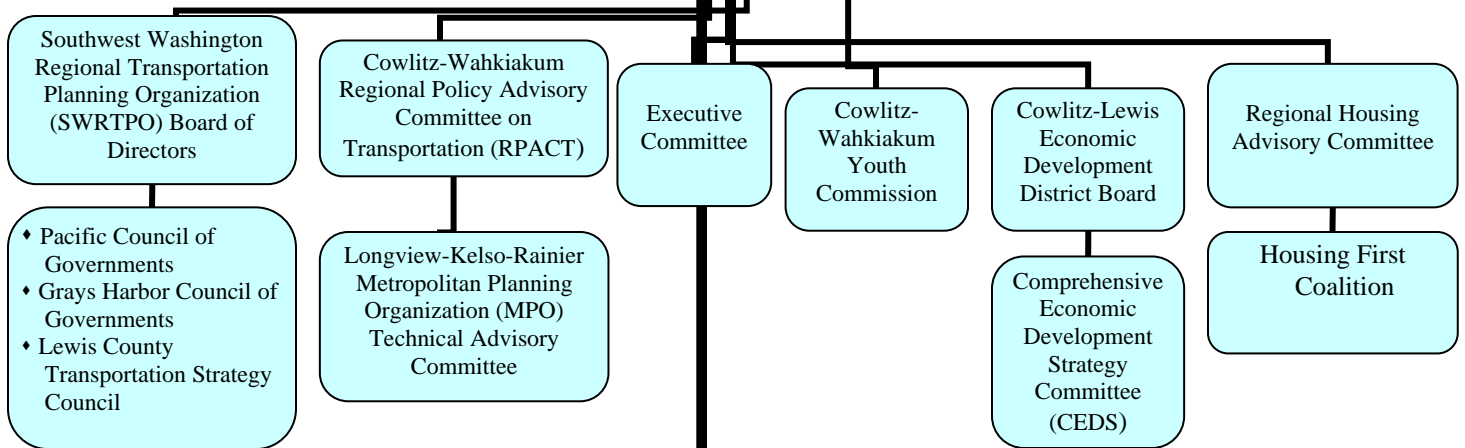
### Special Members

- ♦ Beacon Hill Sewer District
- ♦ Castle Rock School District #401
- ♦ Cowlitz 2 Fire & Rescue
- ♦ Cowlitz Fire District No. 5
- ♦ Cowlitz P.U.D.
- ♦ Kalama School District #402
- ♦ Kelso School District #458
- ♦ Longview School District #122
- ♦ Port of Kalama
- ♦ Port of Longview
- ♦ Port of Woodland
- ♦ Wahkiakum County Port District #1
- ♦ Wahkiakum County Port District #2
- ♦ Woodland School District #404

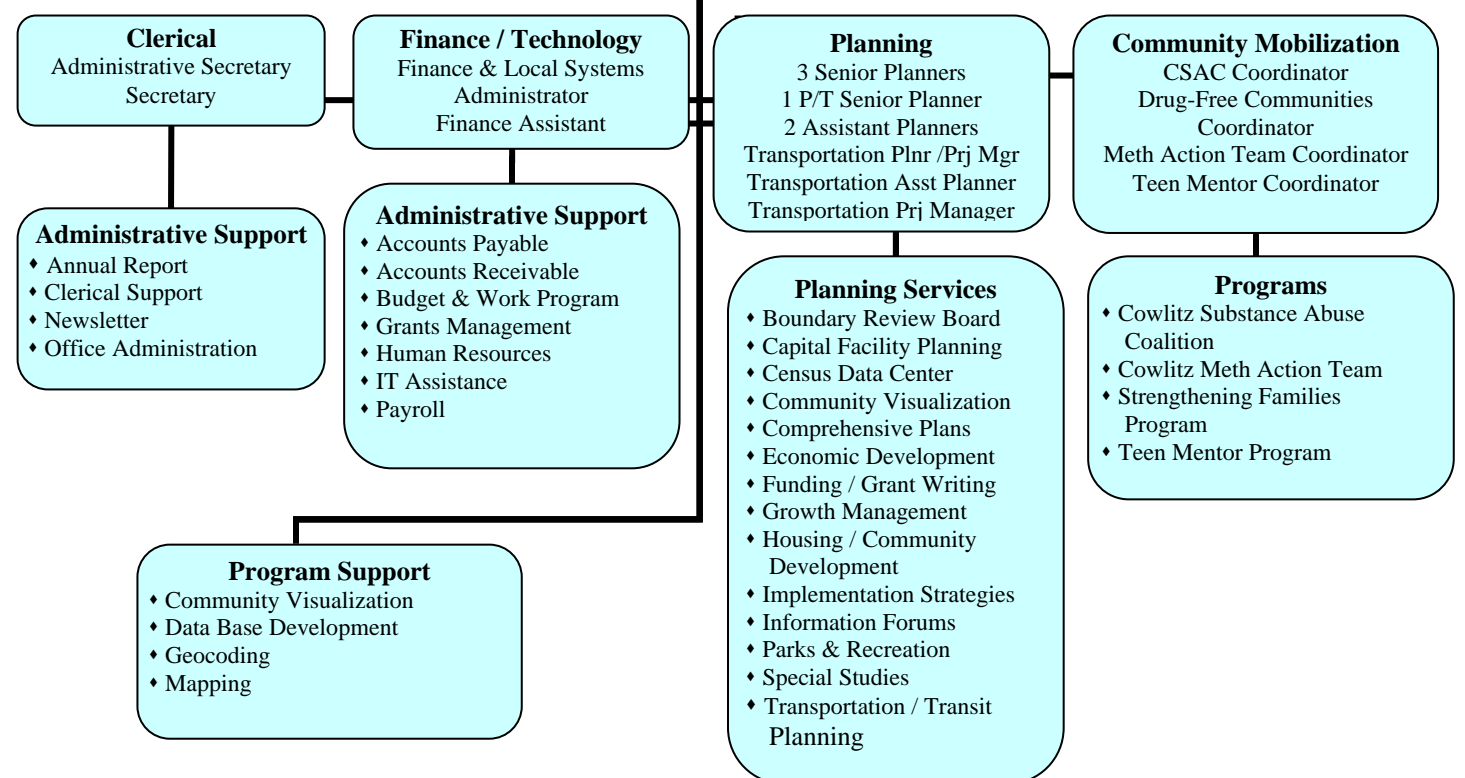
### Associate Members

- ♦ City of Rainier, Oregon
- ♦ Cowlitz Economic Development Council
- ♦ Kelso-Longview Chamber of Commerce
- ♦ Longview Housing Authority
- ♦ Lower Columbia College
- ♦ Lower Columbia Community Action Program
- ♦ Lower Columbia Economic Development Council

## Committees



## Director



## **FY 2008 ACCOMPLISHMENTS**

### ***Congressional Appropriations Requests***

Developed prioritized list of projects and assisted local jurisdictions in preparing Congressional forums for FY 2009 appropriations requests. The projects submitted are:

- SR 432/SR 433 Intersection Improvement (City of Longview)
- Discovery Trail, Phase II: Chinook to Station Camp (Washington State Historical Society)
- Grays Harbor Regional Circulation: Port Industrial Road and US 101 Truck Route Alternative (Grays Harbor Council of Governments)

### ***Longview-Kelso-Rainier MPO***

- MPO 2007-2009 RTIP adoption and technical assistance, processing amendments, and coordination with WSDOT
- Manage Airport Master Plan – began update and hired URS as consultant
- MPO area federal functional classification map update continued
- Developed the STP allocation program for Cowlitz County jurisdictions
- SR 432 Rail Realignment and Bypass Feasibility Analysis completed
- Continued strategic planning process for Cowlitz Transit Authority
- Worked with CUBS and Human Services Council on submitting a Consolidated Transit Grant

### ***Cowlitz County (non-MPO)***

- Woodland Area Transportation Strategic Plan Underway
- Kelso to Martin's Bluff Rail Project coordination resulting in proposed Port of Kalama bypass
- Participation on North County Loop Trail with Cowlitz on the Move with help from ACES Grant

### ***Grays Harbor Council of Governments***

- Completed annual update of Grays Harbor Transit's Transit Development Plan.
- Completed the Categorical Exclusion related to the Grays Harbor Transit's Downtown Aberdeen Station Upgrade. Project funded by enhancement dollars.
- Negotiated the conversion of Enhancements funds to FTA.
- Developed RFQ, ad, and rating process for consultant selection for the Lake Quinault Park and Ride study. Funded by county STP dollars.
- Completed the development of the Human Services Coordinated Transportation Plan.
- Maintained the TIP/STIP process including training, technical assistance, processing amendments, and coordination with WSDOT.
- Participated with the Quinault Nation in the development of their Comprehensive Transportation Plan.
- Identified transportation related projects for the Grays Harbor portion of the Comprehensive Economic Development Strategy (CEDS).
- Represented regional interests at several area conferences.
- Developed and forwarded two projects for TCSP funding (Port Industrial Road Upgrade & US 101 Truck Route Alternative EIS).

- Developed and forwarded three projects for the economic stimulus package:
  - Port Industrial Road at \$4.8M
  - US 101 Truck Route alternative EIS at \$5M
  - Tri-City operational improvements at \$4.5 M
- Completed preliminary interviews, stakeholder selection and background planning for the SR 109 Corridor Management Plan (National Scenic Byways Grant).
- Developed web site for the 109 CMP in order to facilitate public involvement.
- Participated on the Grays Harbor Regional Jobs Development Team to identify transportation related issues.
- Coordinated preliminary phasing analysis and cost update to the Port Industrial Road Strategic Analysis
- Worked with Quinault Indian Nation staff to develop protocol and process to allow GHCOG/RTPO to assist with BIA Roads Inventory
- Allocated Surface Transportation Program (STP) funding to the following projects:
 

GHCOG – Administration	\$ 50,000
Port of Grays Harbor – Industrial Rd. upgrade (engineering)	\$ 476,000
Aberdeen – Wishkah St. Sidewalk bulb-out project	\$ 600,000
Cosmopolis – Downtown Corridor Imp. Ph II (const.)	\$ 750,000
Hoquiam – Citywide Pedestrian Safety/Mobility Imp.	\$ 605,000
Grays Harbor Transit – Lake Quinault Park and Ride Study	\$ 51,000
Grays Harbor County – Middle Satsop Rd. Curve Realignment	<u>\$ 750,000</u>
<b>TOTAL PROJECTS</b>	<b><u>\$3,282,000</u></b>

***Lewis County***

- Continue to assist the US 12 Scenic Byway Committee by serving on the working group and transportation/signing committee for US 12 Scenic Byway.
- Established governing board and adopted guiding principles and bylaws for Lewis County Transportation Strategy Council.
- Received Scenic Byway Grant for Morton visitor center and White Pass Marketing

***Pacific County***

- Began update of Functional Classification Maps for Pacific County and cities of South Bend, Raymond, Ilwaco and Long Beach in conjunction with WSDOT
- Completed US 101 improvements prioritized project list and created brochure for use by elected officials
- Participated in development of Beards Hollow Overlook Project
- Received Scenic Byway Grant for Discovery Trail completion and Dismal Nitch

***Wahkiakum County***

- Worked closely with county staff to support efforts to replace the Ferry Wahkiakum
- Support efforts to develop a Scenic Byway committee for SR 4 (Lewis and Clark Trail) to market Wahkiakum and Pacific County attractions

***Organizations and Committees***

- Serve on three transportation committees with the National Association of Regional Councils
- (NARC): Transportation Executive Committee, Freight Issues and Rural Issues. NARC provides a national forum on transportation issues and the roles that regional councils play by sharing information and experience.

- Attended the NARC Conference in Washington, DC and featured as a speaker on Rural Transportation Planning at the NARC National Conference in Orlando, Florida.
- Continued involvement with the West Coast Corridor Coalition.
- Participated in FHWA MPO Peer Group regarding response to global warming and climate change

***Long Range Funds:***

***Establishment of Lewis County Transportation Strategy Council***

- CWCOG hired consultant JD White to facilitate and establish the Lewis County Transportation Strategy Council in 2007 for the purpose of coordinating and prioritizing transportation related activities within Lewis County. The consultant interviewed all stakeholders from Lewis County and the cities within, facilitated discussions regarding bylaws and guiding principles, wrote and edited the bylaws and guiding principles, and facilitated the establishment of a governing board.

***Title VI Activities***

- CWCOG staff worked closely with WSDOT Title VI coordinator to update the CWCOG Title VI plan. Staff also attended a Title VI workshop.

***Continuing Education and Workshops***

CWCOG staff attended the following workshops and classes during FY 2008:

- WSDOT Resilient Freight Systems Conference, November 8, 2008
- Watchable Wildlife Conference, September 13-14, 2007
- WSDOT Public Transit Human Services Transportation Plans Training, February 2008
- Fundamentals of Traffic Engineering with Transpeed, March 2008
- Will attend Scenic Byways workshop May 7-8 2008
- CWCOG staff participated in the West Coast Corridor Coalition activities
- CWCOG Staff participates regularly in the WSDOT Long Term Air Transportation Study Meetings

## **MPO Planning Objectives for SFY 2009**

The following work program items are proposed for Fiscal Year 2009 in the Longview-Kelso-Rainier MPO area.

### ***Urban Area VISUM Travel Forecast Model***

- MPO Model Update/Maintenance Activities (2-year contract with the Transpo Group for 07-09 Biennium)
- Traffic Impact Analysis Requests
- Urban Area Traffic Count Program
- Annual Traffic Count, turn movement counts, AADT – 2009
- Classification Counts – 2009

### ***Longview Transportation Assistance***

- Code Update – Community VIZ GIS application

### ***Kelso Transportation Assistance***

- Talley Way Corridor
- Airport Master Plan Project Manager

### ***SR 432 Rail Realignment Feasibility Study (SWR WSDOT Lead Agency)***

- Continue to develop ongoing working group with regional public/private stakeholders

### ***Transit-Related Assistance***

- CUBS Strategic Plan
- Update, monitor coordination activities through Coordinated Human Services Transit Plan follow-up and required reporting
- JARC related activities
- Transportation Benefit District Analysis

### ***Urban Area Transportation System Planning Activities***

- Access Management Implementation
- Urban Area Transportation Systems Plan
- Functional Classification Amendment
- Cowlitz County Comprehensive Plan review/assistance
- City of Kelso Comprehensive Plan review/assistance
- Public Facilities District Strategic Plan

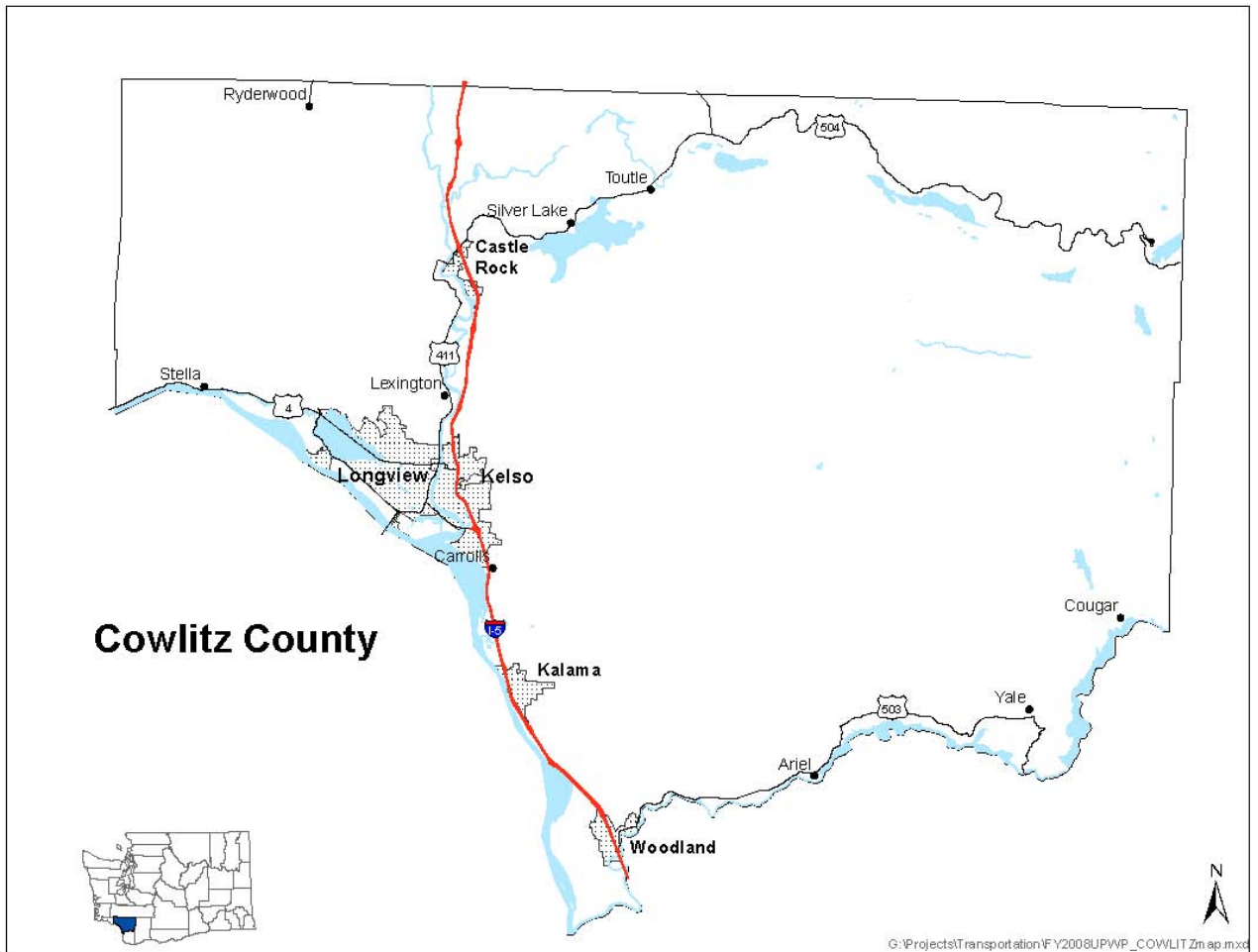
### ***CWCOG Project Selection and Funding Program***

- STP Allocation for urban area
- Annual Urban Area TIP

### ***Review/Oversight Activities***

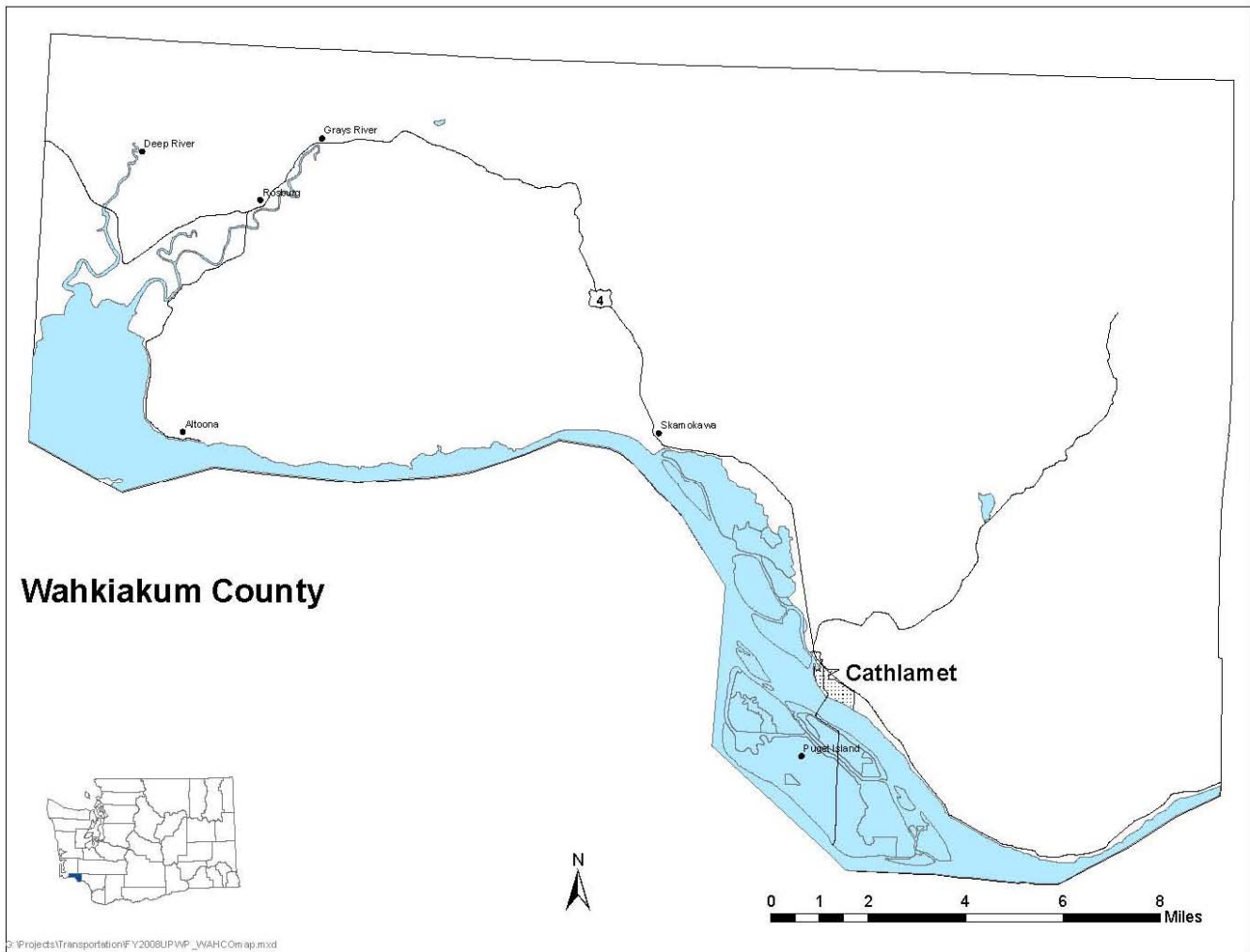
- SEPA Checklist Response
- Comprehensive Plan Review
- GIS and Community VIZ Applications/Updates
- TIP coordination with WSDOT

**RTPO Planning Objectives for SFY 2009**



### **Cowlitz County Non-MPO Area**

- Woodland Transportation Infrastructure Strategic Plan
- Castle Rock to Lexington Trail Plan Assistance
- Non-MPO Area TIP
- Kelso to Martin's Bluff Rail Project with WSDOT Rail Office and local proponents
- Continued development of the Cowlitz Regional Trails Plan
- SR 411 Lexington Strategic Infrastructure Plan

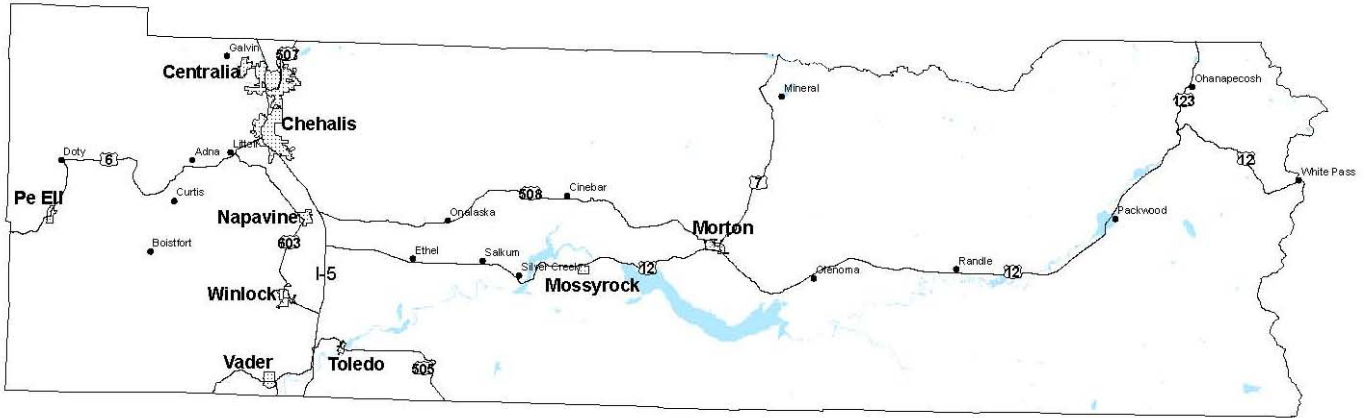


**Wahkiakum County**

**Wahkiakum County**

- Ferry Wahkiakum replacement activities assistance
- TIP assistance
- Technical Assistance as needed by county, Cathlamet, and other organizations
- SR 4 Scenic Byway Plan

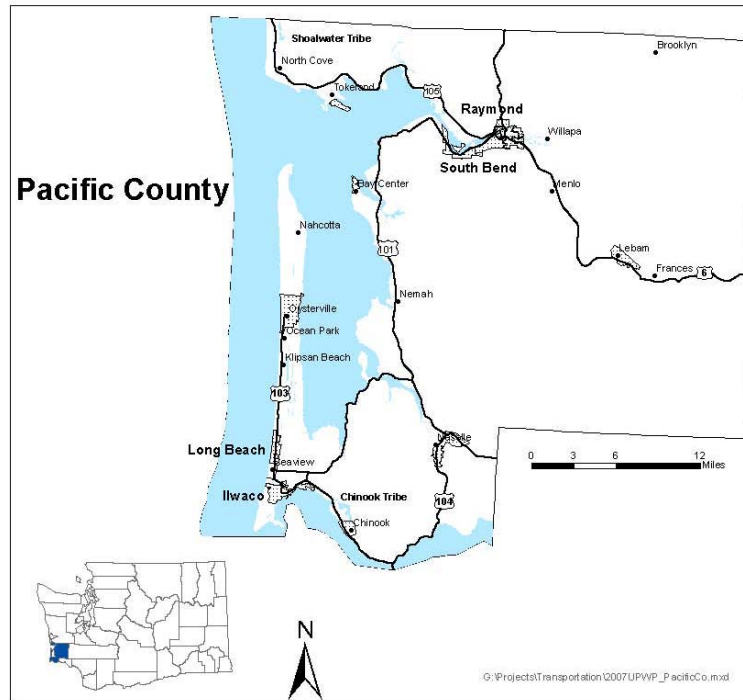
# Lewis County



G:\Projects\Transportation\FY2008UPWP\_LEWIS\map.mxd

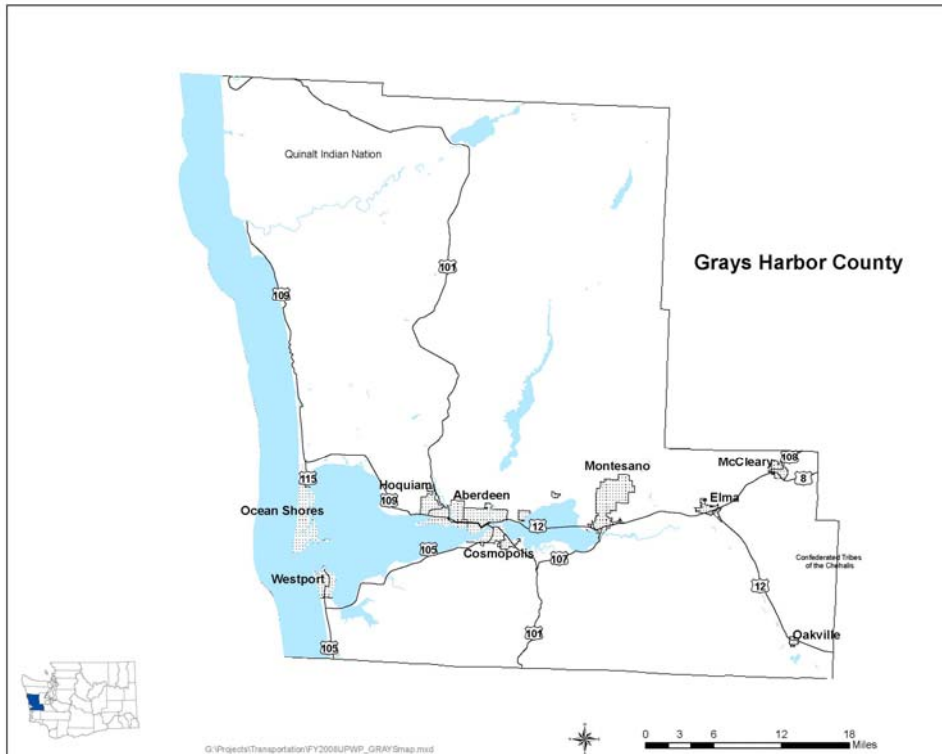
## Lewis County

- I-5 Corridor improvements with SWR WSDOT and flood related improvements
- SR 505 Corridor/Route Development Plan with SWR WSDOT, Lewis County, Winlock and Toledo
- Regional TIP development
- Public Transit Coordination/Strategic Plan (follow-up for Coordinated Human Services Transit Plan)
- US 12 Scenic Byway Activities
- Lewis County Trails/ Willapa Hills Trail
- Provide Lewis County Transportation Strategy Council with technical assistance
- Continue to coordinate with Lewis County and TRPC in evaluating issues and opportunities associated with mobility and economic development between Chehalis-Centralia and the Grand Mound urban growth area.



## Pacific County

- Functional Classification Map Amendment
- PCOG meetings and coordination
- Technical Assistance
- Chinook to Station Camp Discovery Trail Master Plan with Washington State Historical Society
- Comprehensive Plan Update, emphasis on pedestrian and bicycle facilities and population distribution/allocation
- Port-related activities
- National Park participation/coordination role
- Technical assistance in establishment of regional priorities
- Scenic Byway Activities
- Trails Assistance
  - Willapa Hills Trail
  - Naselle Area Trail
  - Bay to Beach Trail
  - Discovery Trail
  - US101: Raymond to Grays Harbor County line realignment analysis



### Grays Harbor County

- STP Allocation, TIP Preparation
- SR 109 Scenic Byway Plan
- US101: Aberdeen-Hoquiam Circulation Strategic Implementation Plan
- Port of Grays Harbor Assistance
- Transit Development Plan for Grays Harbor Transit
- Coordinated Human Services Transit activities as needed
- Technical assistance
- Support the educational element of the Central Park School Safe routes to Schools with classroom education through a mapping exercise.
- Promote aviation, rail, and port facilities as an integral component of the transportation infrastructure in Grays Harbor County
- Assist local agencies in the development and promotion of transportation related activities that benefit the region

**SWRTPO Regional-wide Planning Activities**

- Enhancement Grant Program
- Completion of SWRTPO Regional TIP
- Annual SWRTPO Board Meeting and newsletter
- Tri-county Rail coordination
- Participation in WSDOT LATS
- Participate in I-5 Improvements as needed
- GIS and Community VIS applications
- Update public involvement plan
- Consolidated Grant technical assistance

***Long-Range Planning Funds Allocation Proposals***

- Hire consultant to finish the SWRTPO RTP/MPO MTP  
Funds Allocated:       \$25,000
- Fund planner position for Lewis County Transportation Strategy Council  
Funds Allocated:       \$25,000

## FINANCIAL SUMMARY

### Funding Sources by Project Tasks for SFY 2009 (ESTIMATES)

Task	WA State FHWA / PL	WA State FHWA / PL Carry-Over	OR State FHWA / PL	WA State FTA	WA State FHWA / PL / FTA Local Match	OR State FHWA / PL Match	RTPO	RTPO-LRP & Carry-Over RTPO-LRP	HPP-TPA	Totals
021 – Program Management	\$17,890	\$30,960	\$240	\$4,550	\$13,350	\$27				\$67,017
022 – Data Collection & Analysis	\$29,817	\$51,600	\$400	\$7,582	\$22,250	\$46				\$111,695
023 – Planning Studies & Docs	\$71,562	\$123,840	\$960	\$18,198	\$53,400	\$110				\$268,070
026 – Regional Planning							\$65,039			\$65,039
026 - Grays Harbor Pass-Thru							\$35,000			\$35,000
026 - Lewis County Pass Thru							\$25,000			\$25,000
027 – Regional Long-Range Planning								\$104,481		\$104,481
028 – Woodland Interchange									\$135,000	\$135,000
029 – SR432 Interchange	\$19,000									\$19,000
<b>Totals</b>	<b>\$138,269</b>	<b>\$206,400</b>	<b>\$1,600</b>	<b>\$30,330</b>	<b>\$89,000</b>	<b>\$183</b>	<b>\$125,039</b>	<b>\$104,481</b>	<b>\$135,000</b>	<b>\$830,302</b>