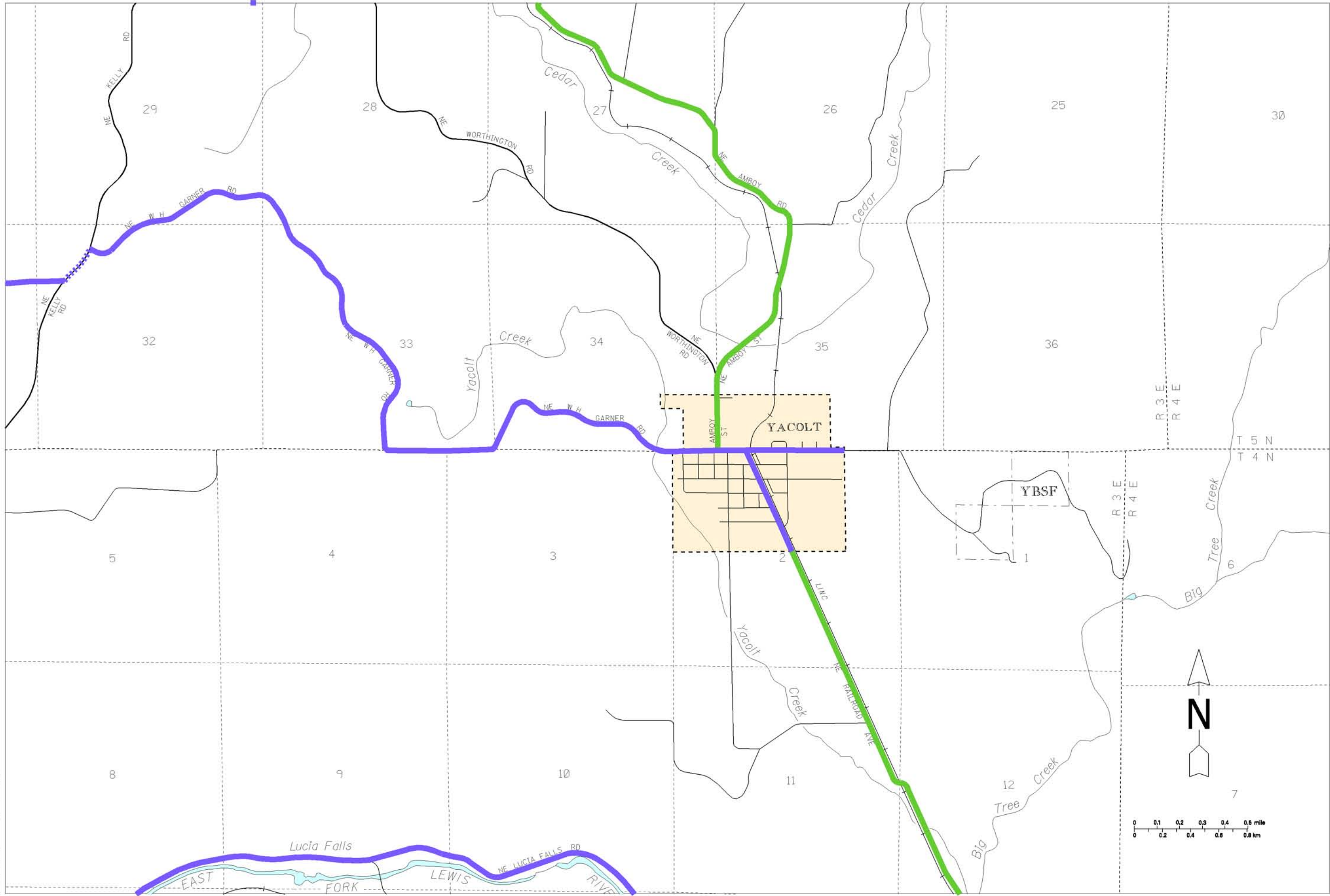


PLOT DATE: 30-NOV-2007



Freight and Goods Transportation System

Roadways 2007

WASHINGTON STATE DEPARTMENT OF TRANSPORTATION

TONNAGE CLASS T1 - T5 ANNUAL TONS (in thousands)

- T1 (over 10,000)
- T2 (4,000 to 10,000)
- T3 (300 to 4,000)
- T4 (100 to 300)
- T5 (over 20 to 60 days)

No Seasonal Weight Restrictions

Seasonal Weight Restrictions

CLARK COUNTY

YACOLT

North arrow pointing up with 'N' below it.

Scale bar: 0 to 0.8 mile / 0 to 0.8 km.