

MONTHLY PROJECT OVERVIEW

I-405 South Bellevue Widening Project

June 2007

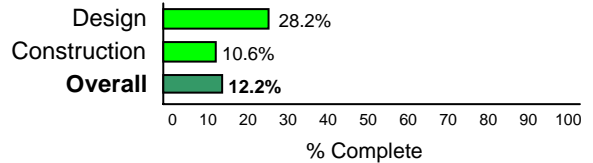
Project Location: I-405, 112th Ave SE to SE 8th St
Design-Builder: Atkinson

PIN: 840541F, 840509A, 840541G
WIN: U40541F

Design / Build Contract Summary

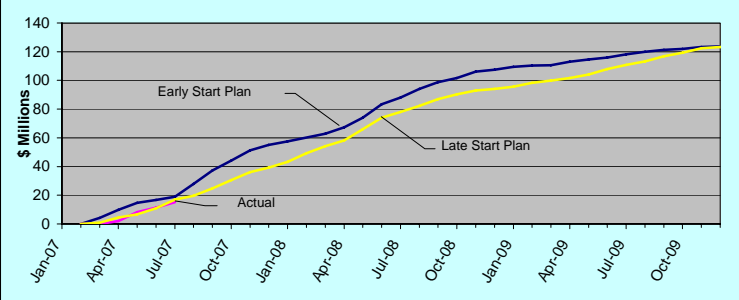
Contract Award: February 16, 2007
 Notice to Proceed: March 15, 2007
 Original Contract Time: 934 Calendar Days
 Original Substantial Completion: October 2009
 Original Contract Amount: \$124,000,000
 Revised Contract Amount: \$124,000,000

Project Progress to Date



Project Status as of: **June 30, 2007**
 Contract Days Elapsed: 107 of 934 = 11.5%
 Contract Amount Earned to Date: \$15,148,500.00 = 12.2%
 Contract Amount Earned This Period: \$3,767,500.00 = 3.0%
 Current Projected Completion Date: Oct. 2009 (on schedule)

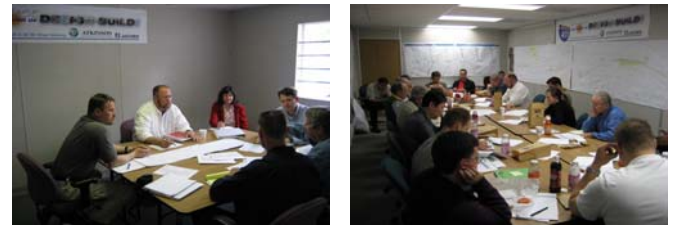
Project Cash Flow



June 2007 Highlights



Establishing clearing limits prior to construction and preparing storage yard



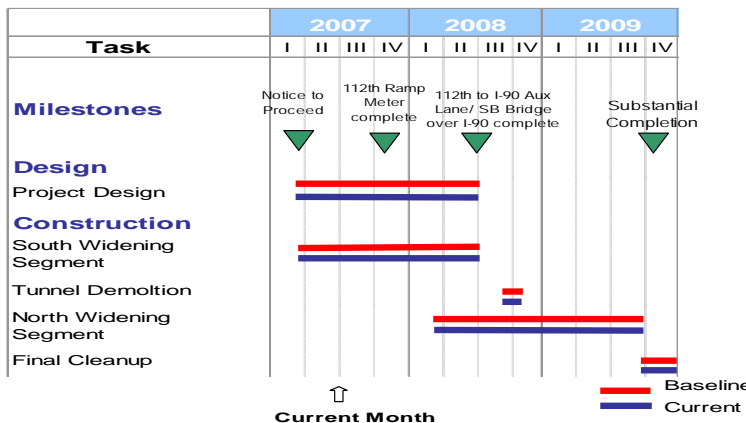
Ongoing task force, training, and design meetings

Design-Build Schedule Summary

Design: The team submitted the I-90 area preliminary design submittal on June 14, 2007 for final approval. Plans for 112th Ave SE to Coal Creek Parkway will be released for construction on July 9th for site preparation activities.

Construction: WSDOT and Atkinson will begin construction on July 9th, 2007 and will complete the project in the fall of 2009. In the summer of 2007, crews will begin constructing an additional lane on I-405 from 112th Ave SE north to I-90, a new southbound I-405 bridge over I-90, a wetland mitigation site at Kelsey Creek and a Whisper Noise Wall northeast of the I-90 interchange. Construction crews will begin widening I-405 north of I-90 in Spring 2008.

Summary Project Schedule



Quality Control / Quality Assurance

Atkinson has submitted their Quality Management Plan describing the procedures that will be used to provide the highest level of quality throughout design and construction. The design-builder is responsible for the inspection and testing of all materials and workmanship incorporated into this project (Quality Acceptance). WSDOT will provide testing and inspection (Quality Verification). Material test results will be statistically compared for acceptance using the WSDOT Statistical Analysis of Material system. WSDOT will perform construction audits to ensure all work is properly inspected, tested and documented per contract specifications.

Risks / Challenges / Issues

Scheduling and sequencing of construction to minimize impacts to the public. Relocation of high voltage power line and fiber optic trunk line. Constructing a successful wetland mitigation site at Kelsey Creek Park.

Public Information & Community Outreach

Informing the public and businesses of upcoming construction activities and lane closures.

Upcoming Activities - July 2007

Construction starts July 9th. Coal Creek Parkway nighttime full closure July 12th. Rolling slowdown for three consecutive nights on I-405 and I-90 for adjustment of powerlines for new power pole.