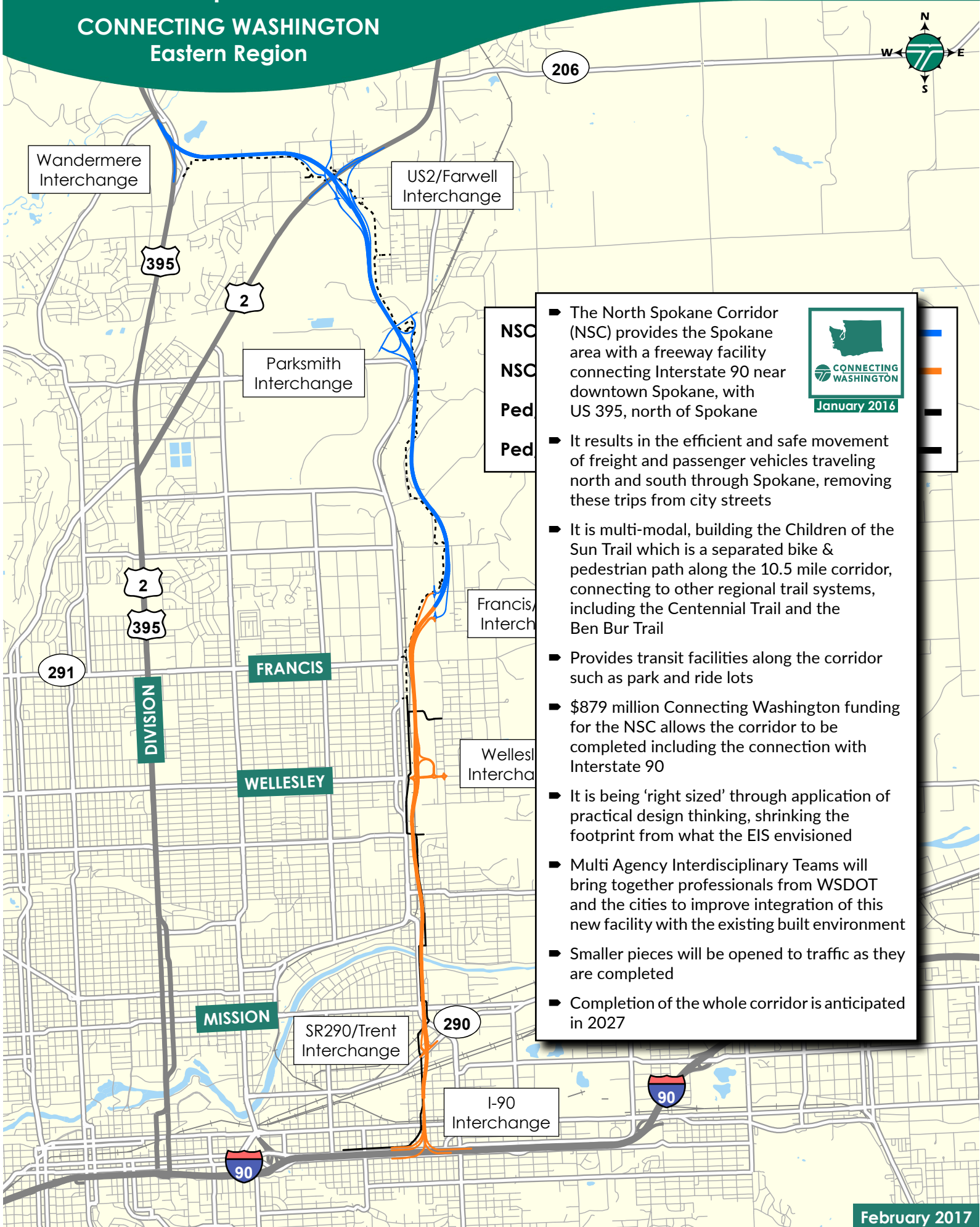


US 395 North Spokane Corridor

CONNECTING WASHINGTON Eastern Region



NSC
NSC
Ped
Ped

- The North Spokane Corridor (NSC) provides the Spokane area with a freeway facility connecting Interstate 90 near downtown Spokane, with US 395, north of Spokane
- It results in the efficient and safe movement of freight and passenger vehicles traveling north and south through Spokane, removing these trips from city streets
- It is multi-modal, building the Children of the Sun Trail which is a separated bike & pedestrian path along the 10.5 mile corridor, connecting to other regional trail systems, including the Centennial Trail and the Ben Bur Trail
- Provides transit facilities along the corridor such as park and ride lots
- \$879 million Connecting Washington funding for the NSC allows the corridor to be completed including the connection with Interstate 90
- It is being 'right sized' through application of practical design thinking, shrinking the footprint from what the EIS envisioned
- Multi Agency Interdisciplinary Teams will bring together professionals from WSDOT and the cities to improve integration of this new facility with the existing built environment
- Smaller pieces will be opened to traffic as they are completed
- Completion of the whole corridor is anticipated in 2027

