



## SR 520 Tolling: Traffic Monitoring

Wednesday, January 11, 2012

Baseline data: M-F, 10/29-11/18 & 11/26-12/16

### Daily Volume:

% change
1/11/2012
baseline

### SR 520 Bridge

-37%
63,200
101,100

### I-90 Bridge

12%
154,900
137,900

### Cross-lake Total I-90, SR 520, SR 522

-6%
263,600
279,700

### SR 522 at 68th Ave NE

12%
45,500
40,700

### Traffic Summary:

The total daily traffic volume on the SR 520 bridge was down 37% compared to a normal weekday, the highest volume seen since the start of tolling. Volume on I-90 was up by 12% and volume on SR 522 was up by 12%. Total cross-lake volume on all three corridors was down 6%. Volume on SR 520 westbound during the evening peak reached normal levels although travel times stayed faster than usual throughout the day in both directions. I-90 travel time was slightly higher than usual in both directions during both peaks. SR 522 travel time was the same as usual in the morning, but slower than usual in the evening. Westbound SR 522 was affected by an incident that blocked two lanes for half an hour.

### Major Incidents:

- Disabled vehicle on I-5 SB at Olive Way blocking 1 lane from 9:06 to 9:10 am
- Disabled vehicle on I-405 NB at Talbot Rd blocking 1 lane from 9:15 to 9:24 am
- Collision on I-5 NB at Michigan St blocking 1 lane from 12:12 to 12:27 pm
- Disabled vehicle on I-5 SB at MLK Jr Way blocking 1 lane from 1:27 to 1:39 pm
- Collision on I-405 SB at NE Park Dr blocking 1 lane from 2:23 to 2:33 pm
- Disabled vehicle on I-405 NB at NE Park Dr blocking 1 lanes from 2:22 to 3:18 pm
- Collision on I-5 NB at 164th St SW blocking 1 lane from 4:04 to 4:09 pm
- Collision on I-5 SB at Ship Canal Bridge blocking 1 lane from 4:53 to 4:54 pm
- Collision on I-5 NB at 196th St SW blocking 1 lane from 5:37 to 5:47 pm
- Collision on SR 522 WB at 61st Ave NE blocking 2 lanes from 5:21 to 5:53 pm

### Special Events:

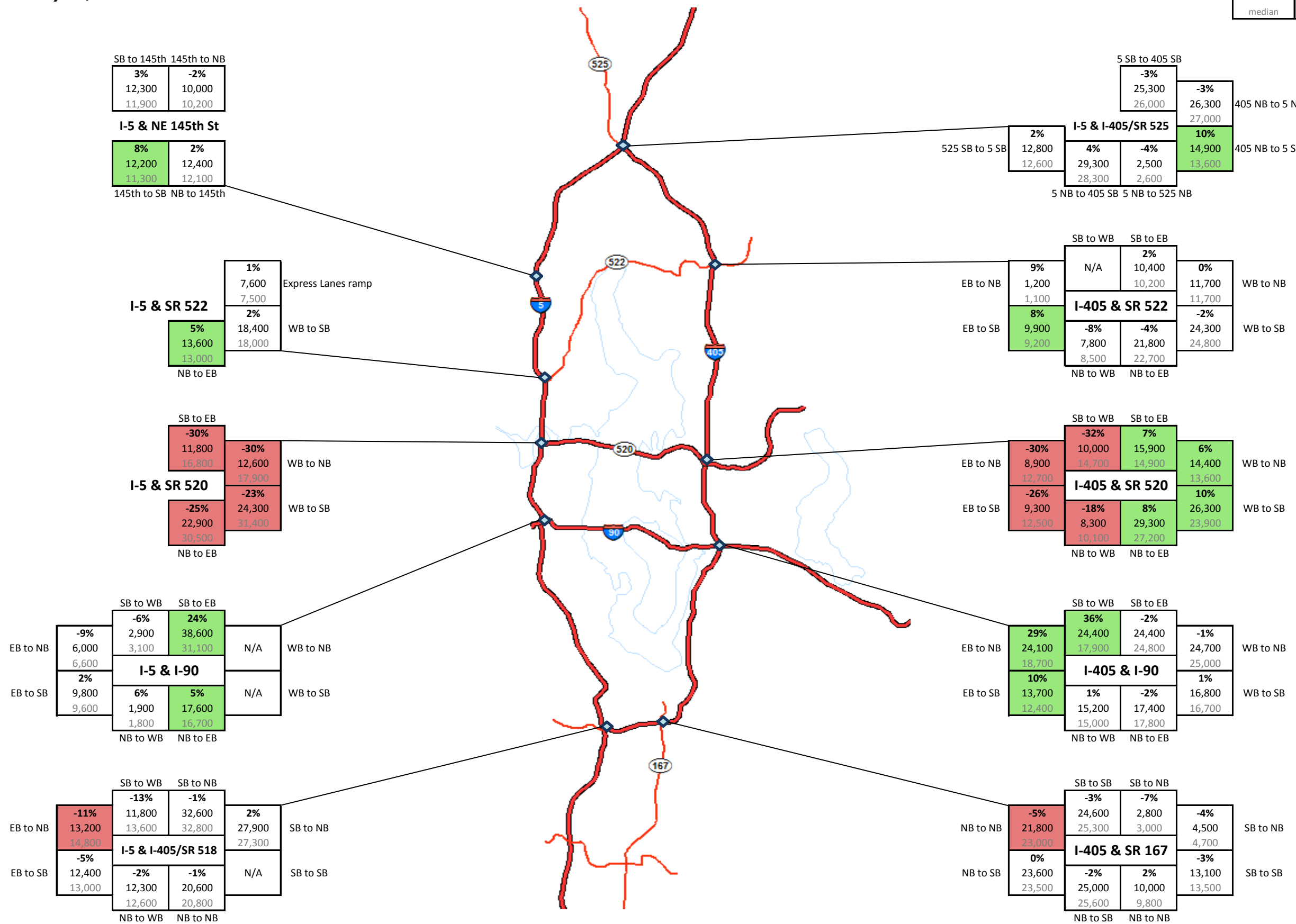
None



**SR 520 Tolling: Traffic Monitoring**  
**Daily Interchange Volumes**  
**Wednesday, January 11, 2012**

Base data: M-F, 10/29-11/18 & 11/26-12/16

% change	above range of typical variation	below range of typical variation
1/11/2012 median		
	(10th/90th percentile)	



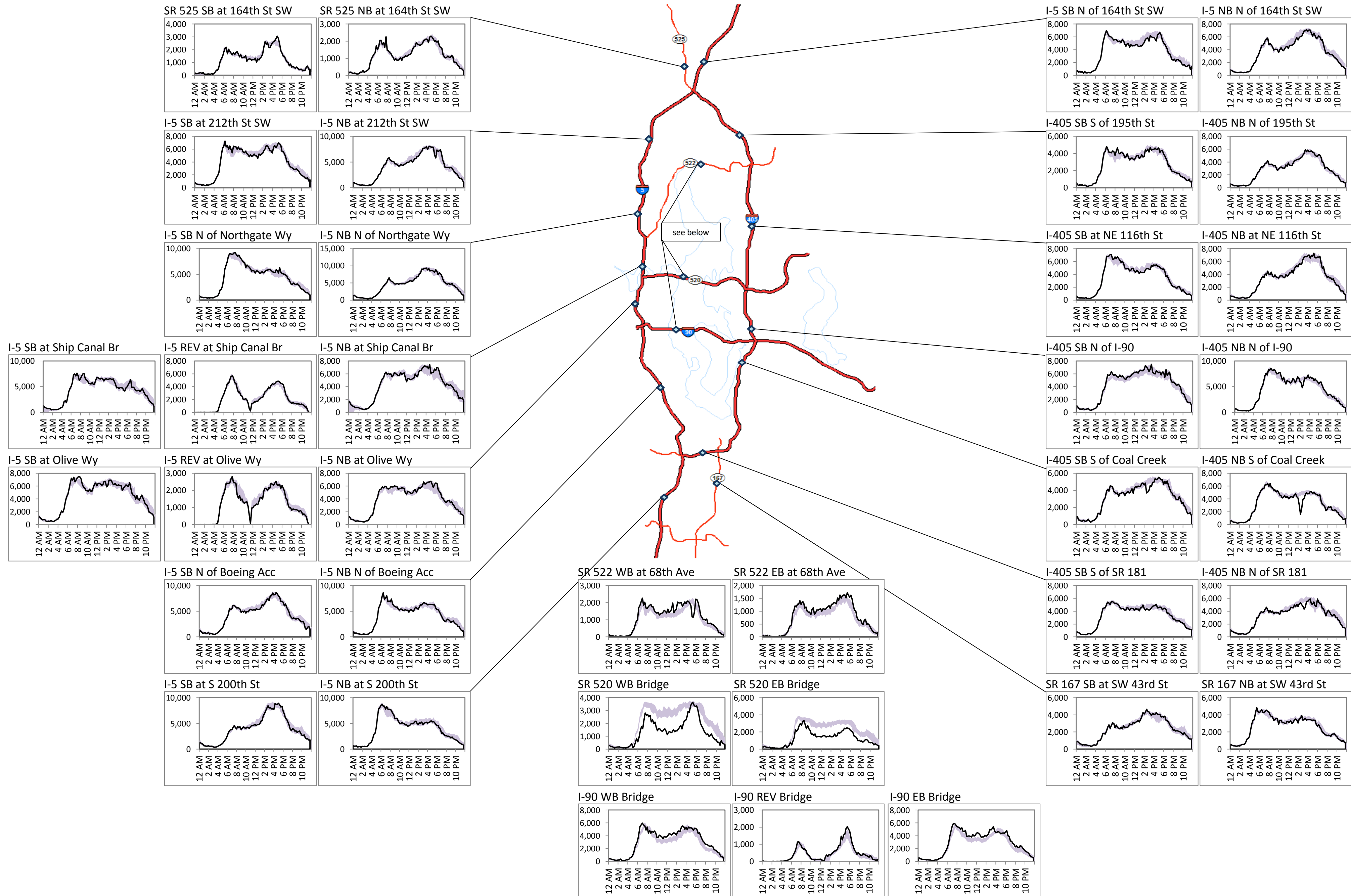
# SR 520 Tolling: Traffic Monitoring

## Hourly Mainline Volumes

Wednesday, January 11, 2012

— Wednesday, January 11, 2012

■ Typical Range (10-90%ile, M-F, 10/29-11/18 & 11/26-12/16)



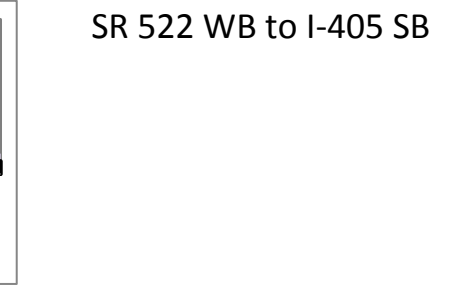
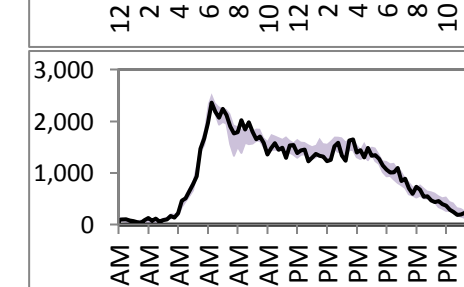
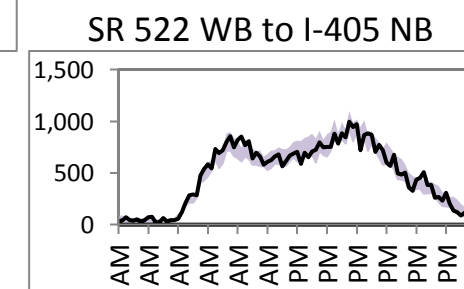
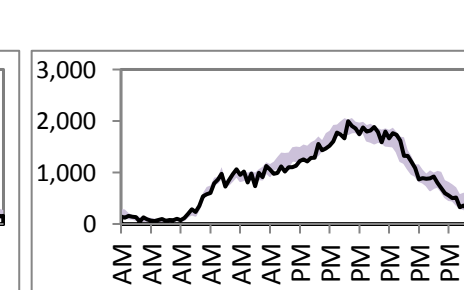
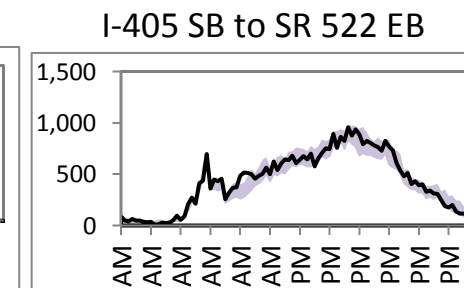
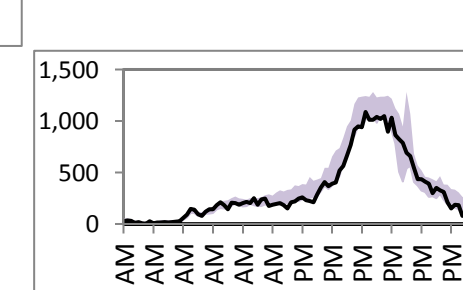
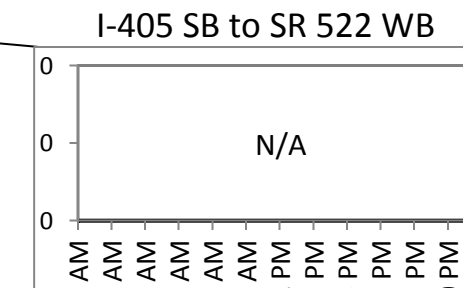
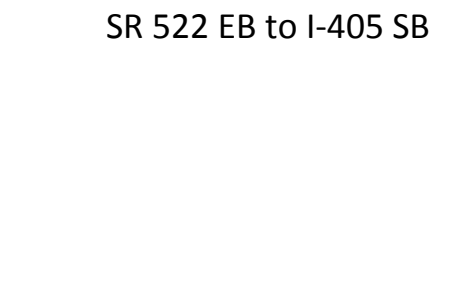
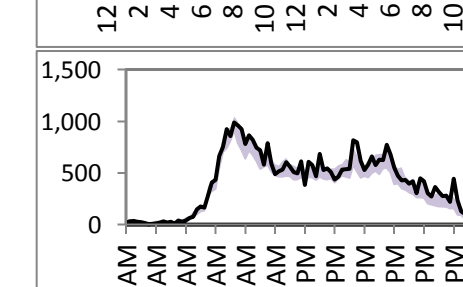
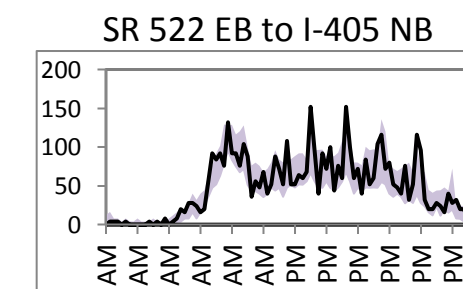
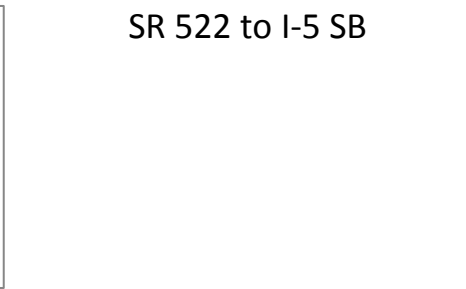
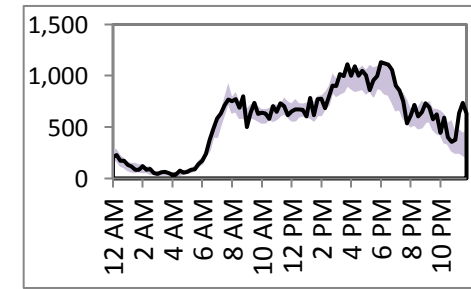
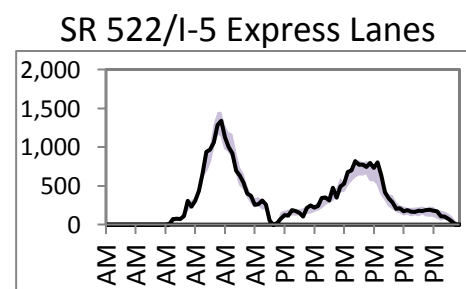
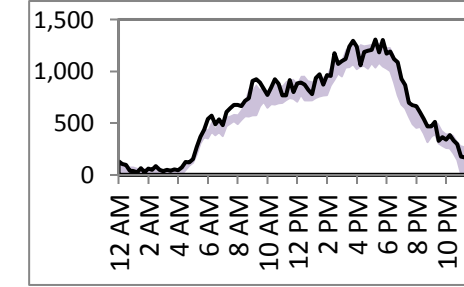
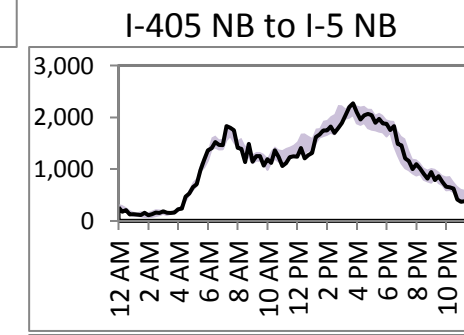
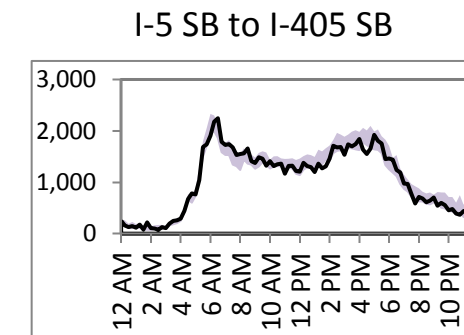
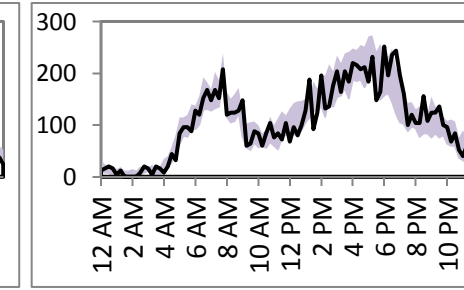
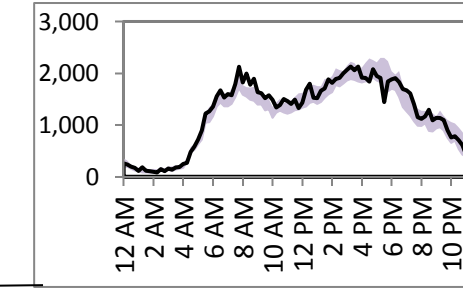
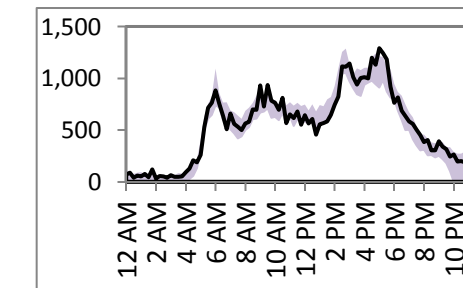
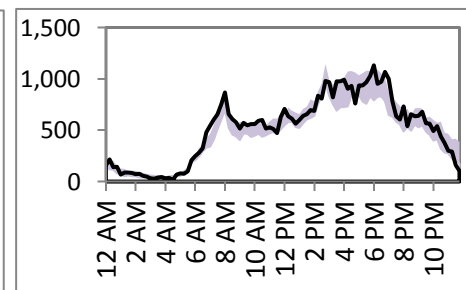
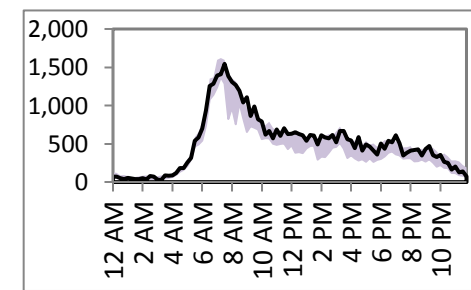
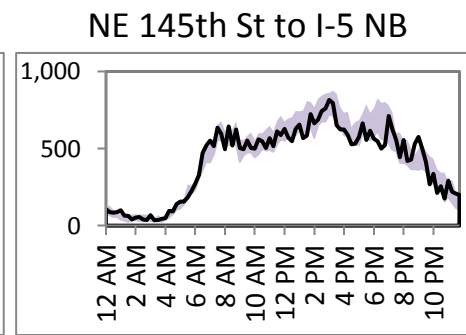
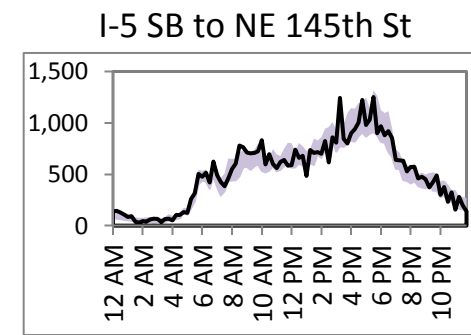
# SR 520 Tolling: Traffic Monitoring

## Hourly Interchange Volumes

Wednesday, January 11, 2012

— Wednesday, January 11, 2012

■ Typical Range (10-90%ile, M-F, 10/29-11/18 & 11/26-12/16)



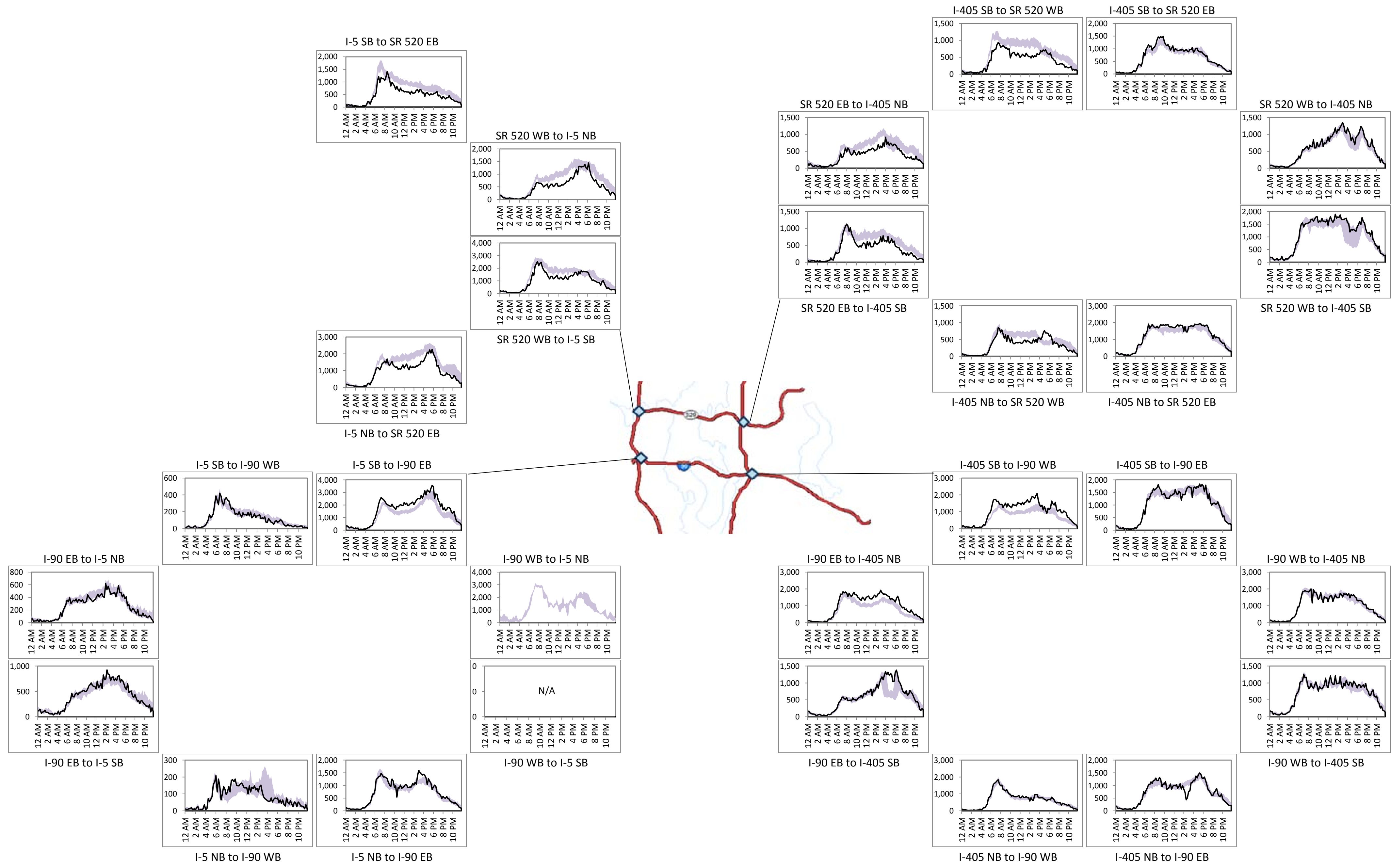
# SR 520 Tolling: Traffic Monitoring

## Hourly Interchange Volumes

Wednesday, January 11, 2012

— Wednesday, January 11, 2012

■ Typical Range (10-90%ile, M-F, 10/29-11/18 & 11/26-12/16)



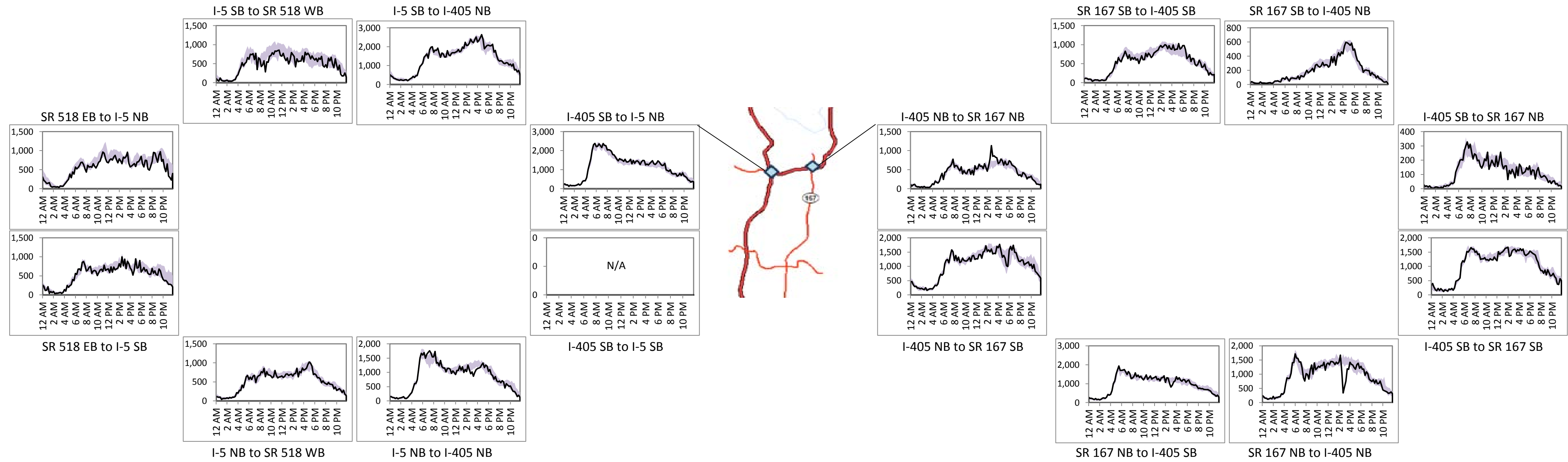
# SR 520 Tolling: Traffic Monitoring

## Hourly Interchange Volumes

Wednesday, January 11, 2012

— Wednesday, January 11, 2012

■ Typical Range (10-90%ile, M-F, 10/29-11/18 & 11/26-12/16)



# SR 520 Tolling: Traffic Monitoring

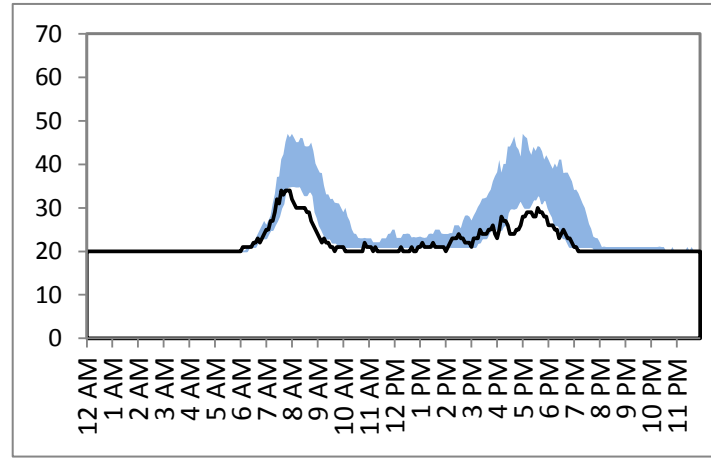
## Travel Times

Wednesday, January 11, 2012

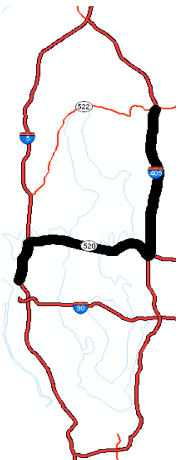
— Wednesday, January 11, 2012

■ Typical Range (10-90%ile, M-F, 10/29-11/18 & 11/26-12/16)

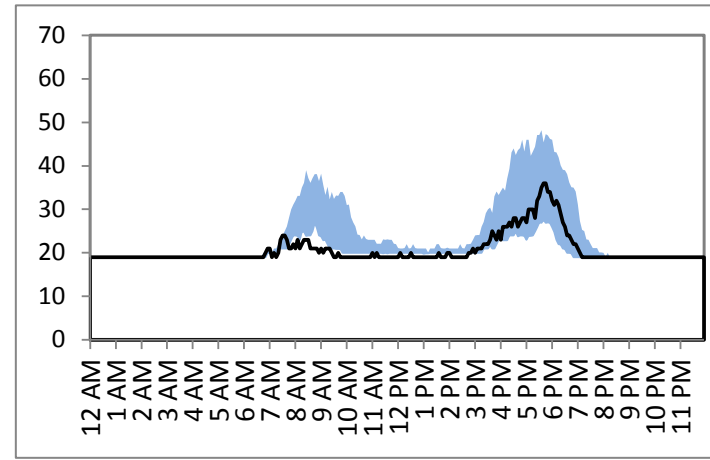
### Woodinville to Seattle



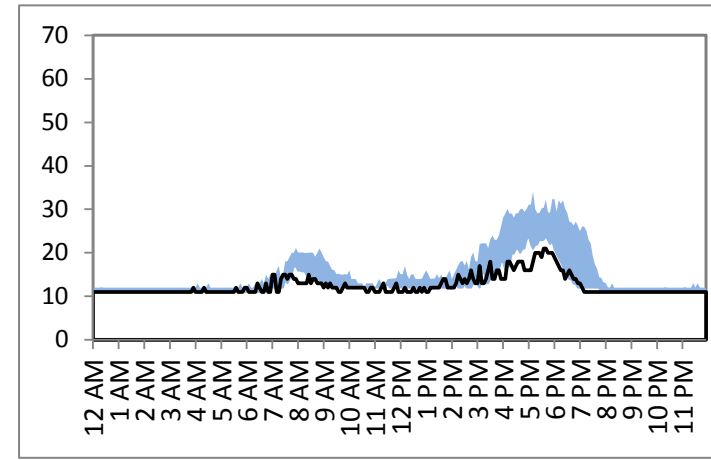
### via 520



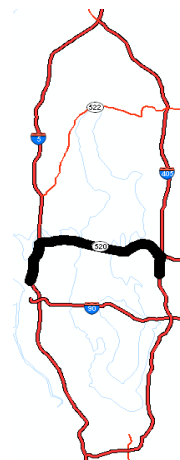
### Seattle to Woodinville



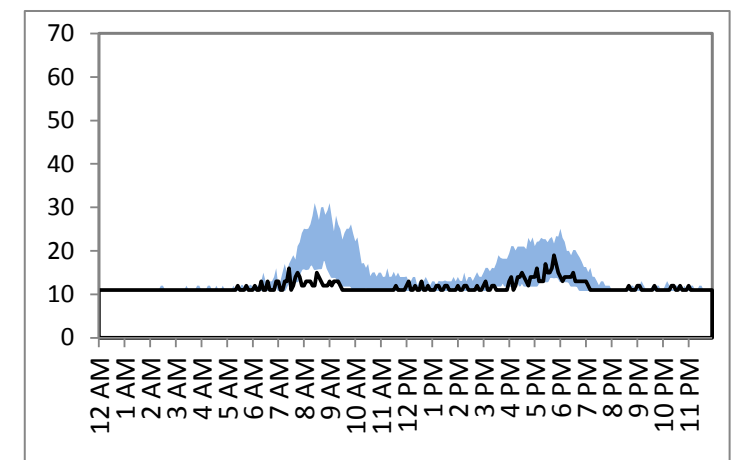
### Bellevue to Seattle



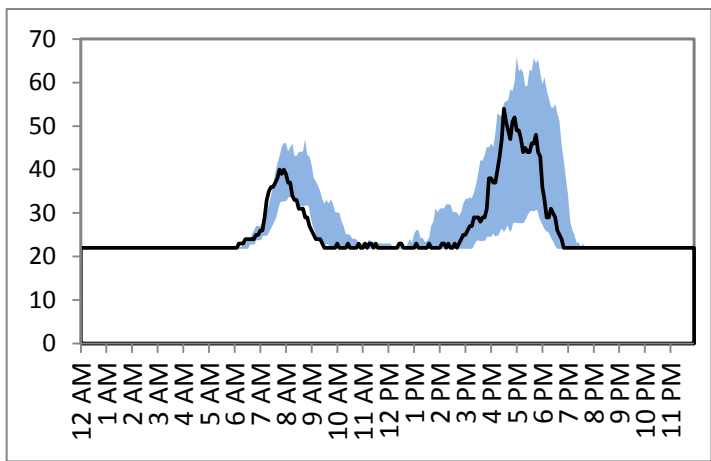
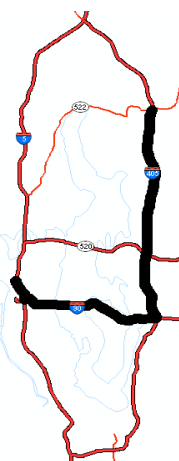
### via 520



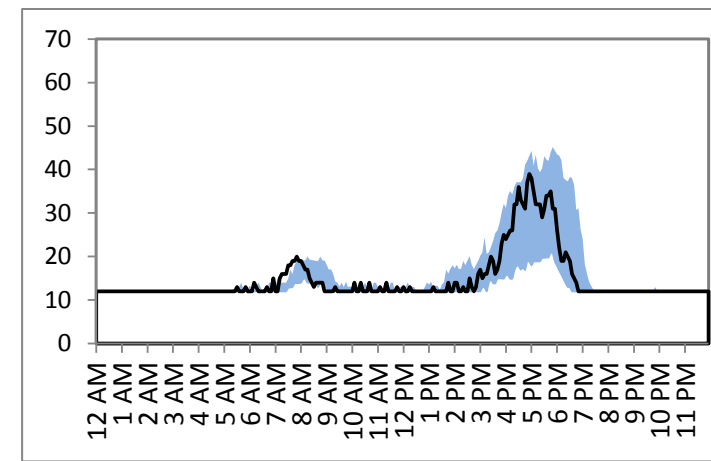
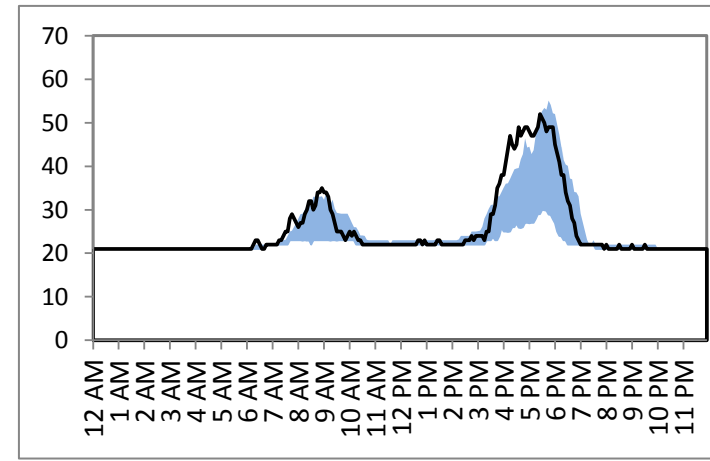
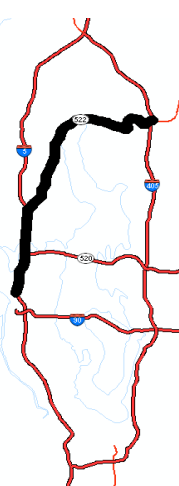
### Seattle to Bellevue



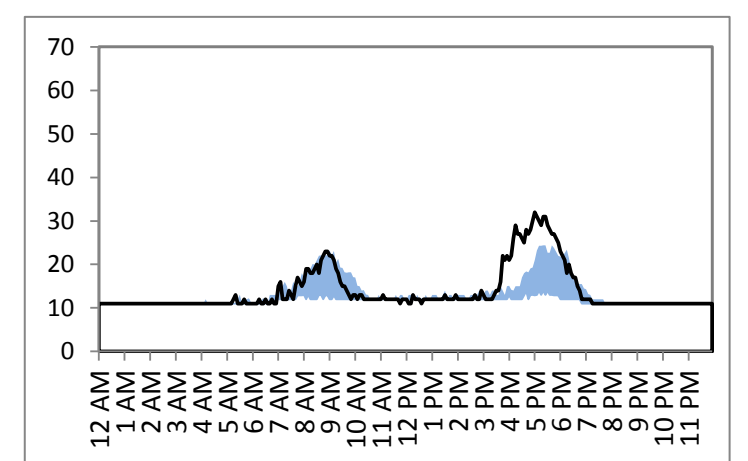
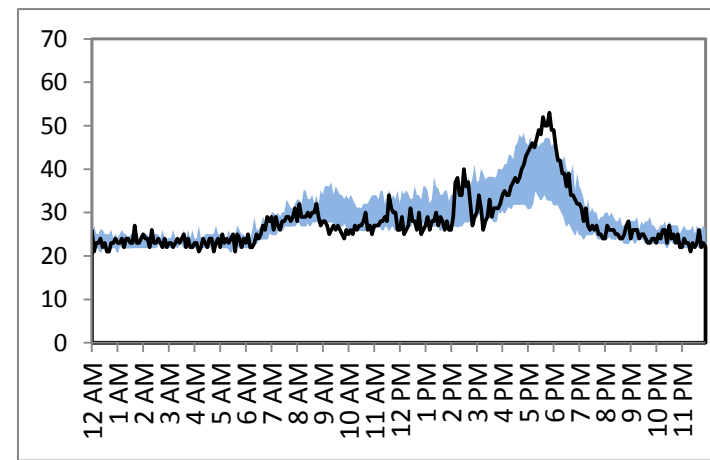
### via I-90



### via SR 522



### via I-90



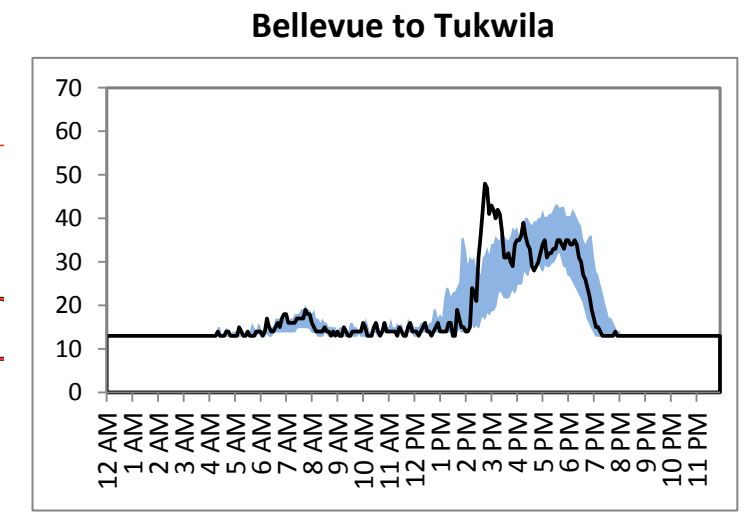
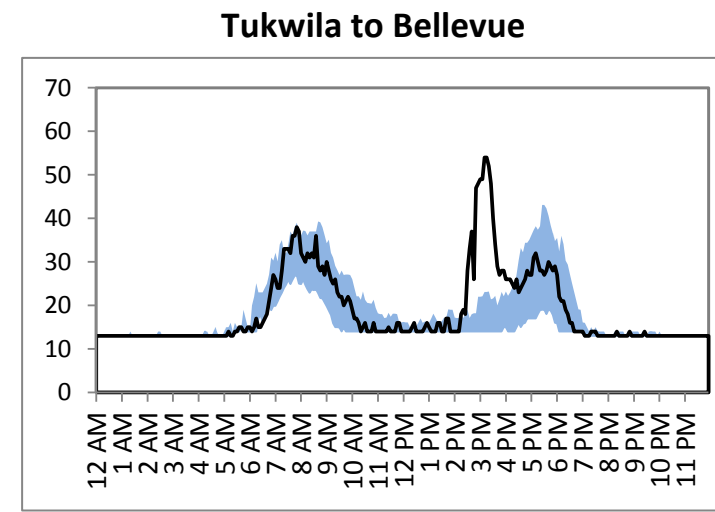
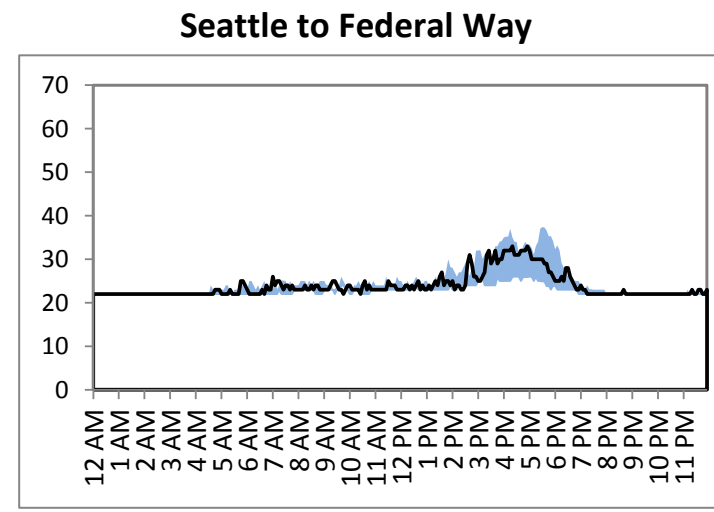
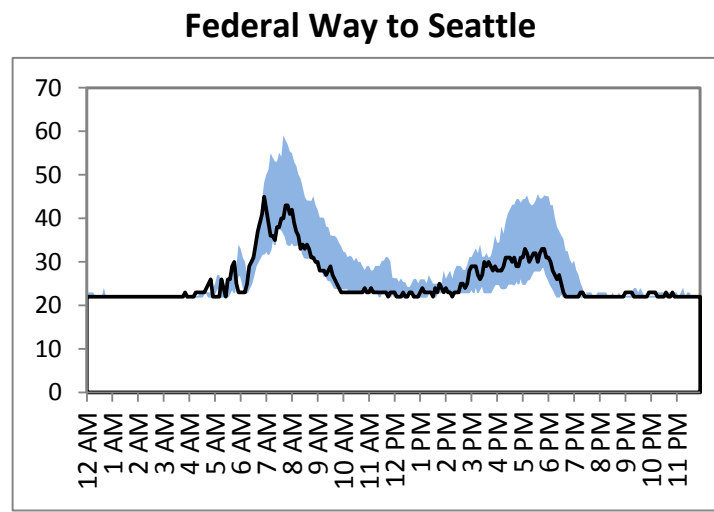
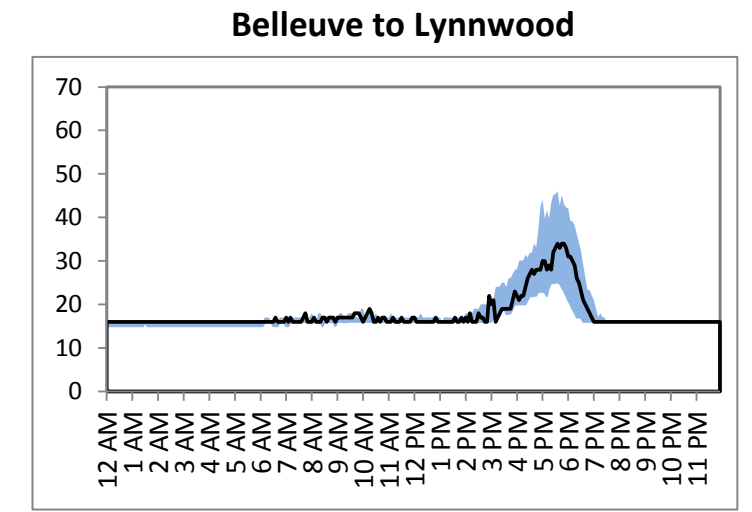
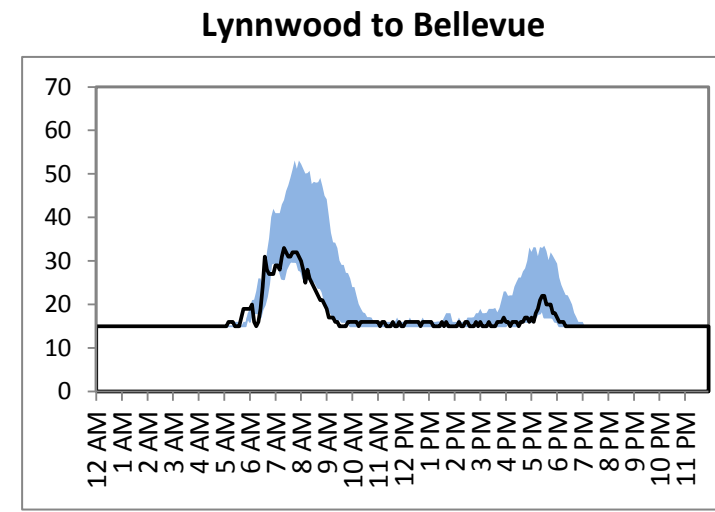
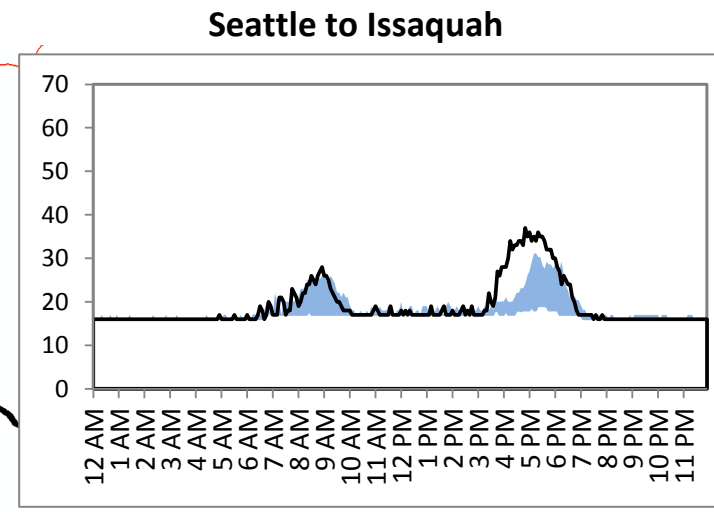
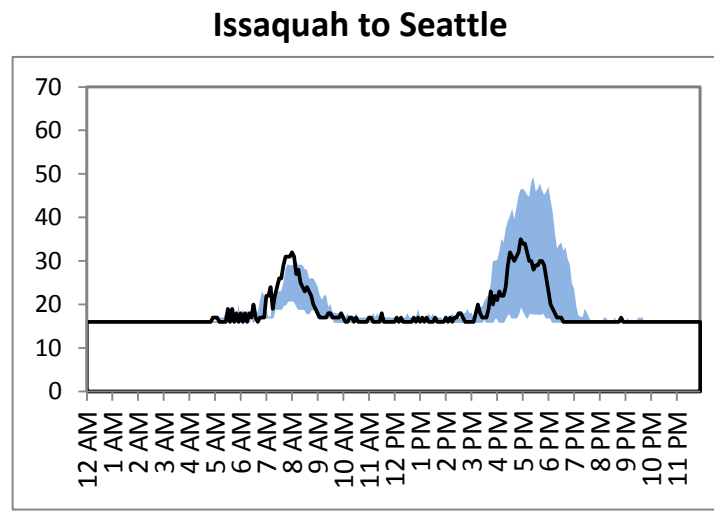
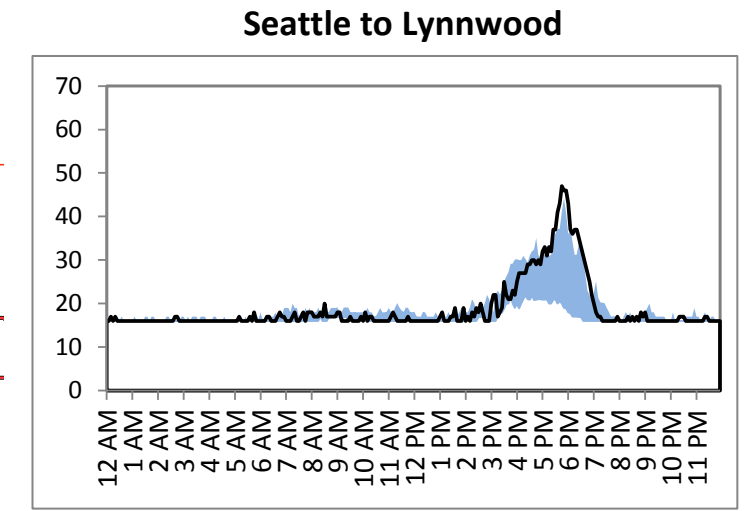
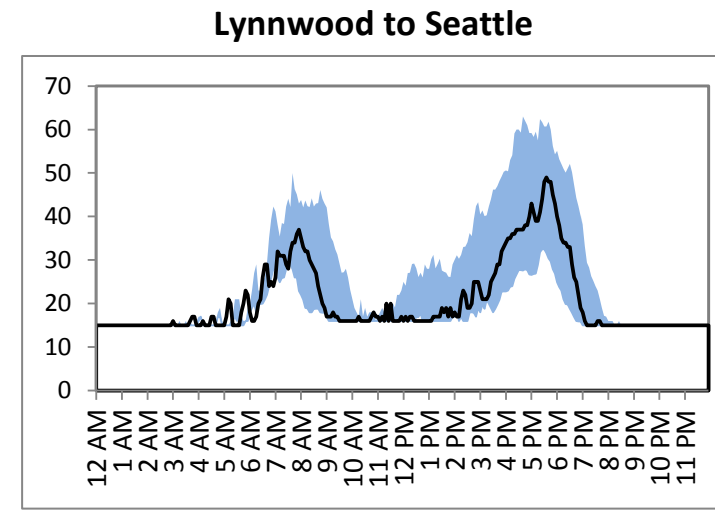
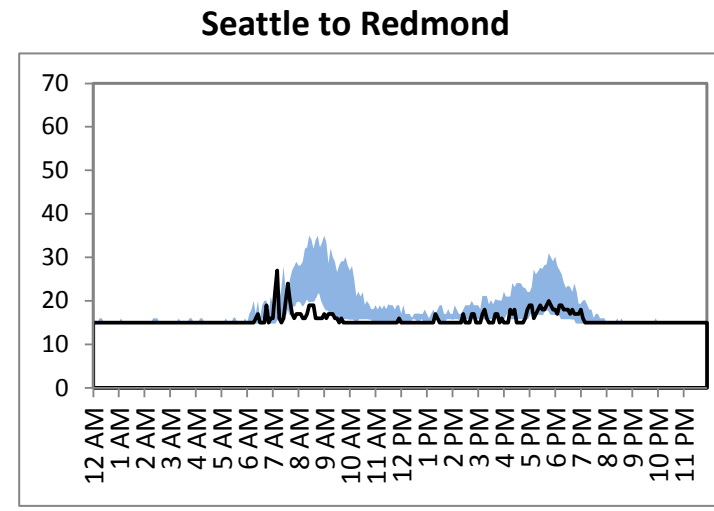
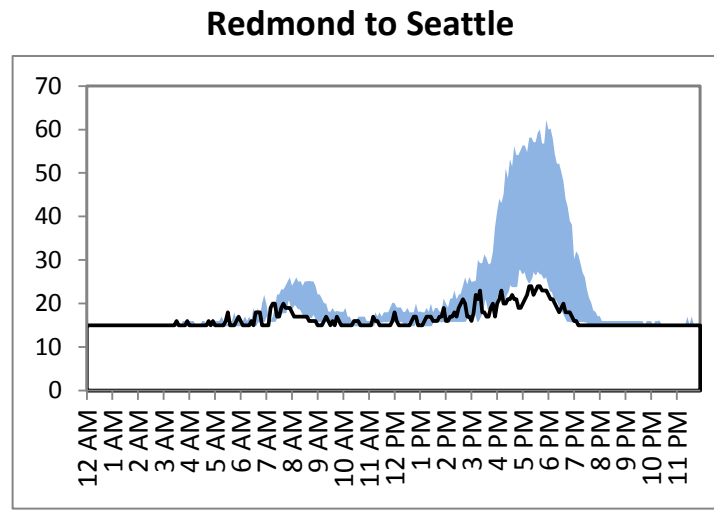
# SR 520 Tolling: Traffic Monitoring

## Travel Times

Wednesday, January 11, 2012

— Wednesday, January 11, 2012

■ Typical Range (10-90%ile, M-F, 10/29-11/18 & 11/26-12/16)

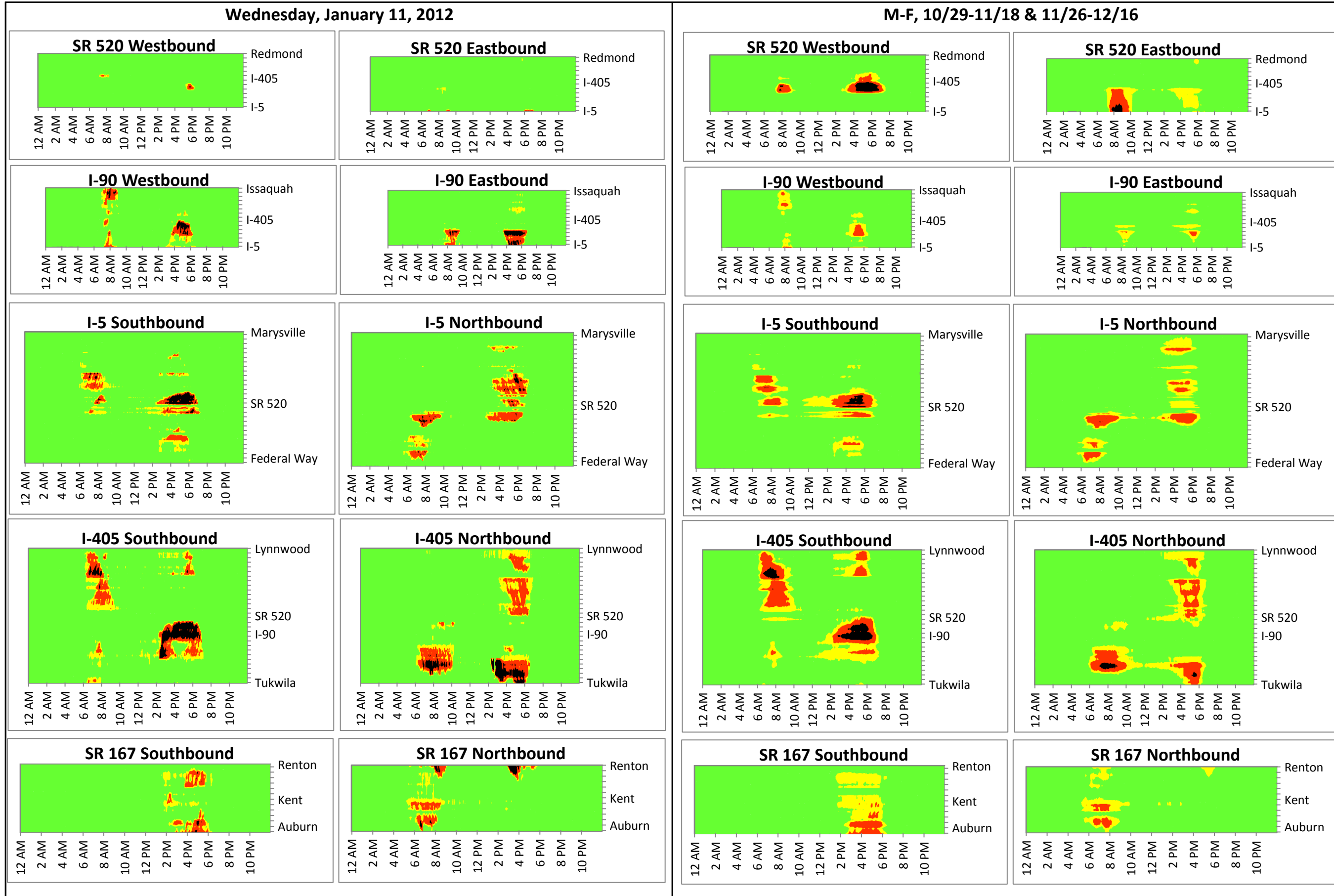


# SR 520 Tolling: Traffic Monitoring

## Congestion Contours

Wednesday, January 11, 2012

- free flow
- moderate
- heavy
- stop and go



# SR 520 Tolling: Traffic Monitoring

## SR 520 Detail

Wednesday, January 11, 2012

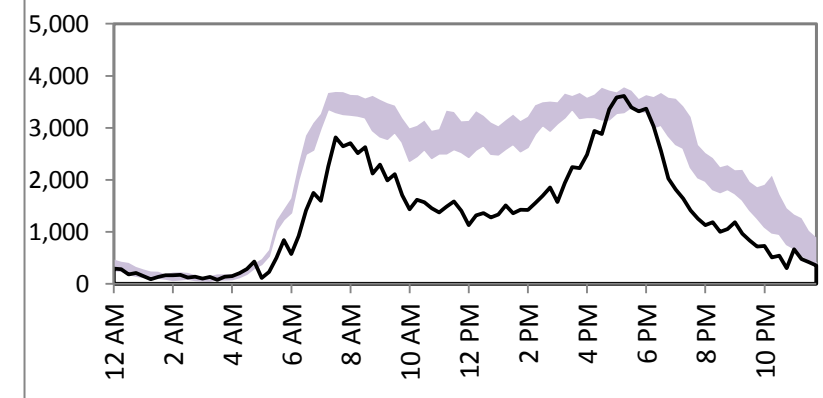
### Mainline Volume



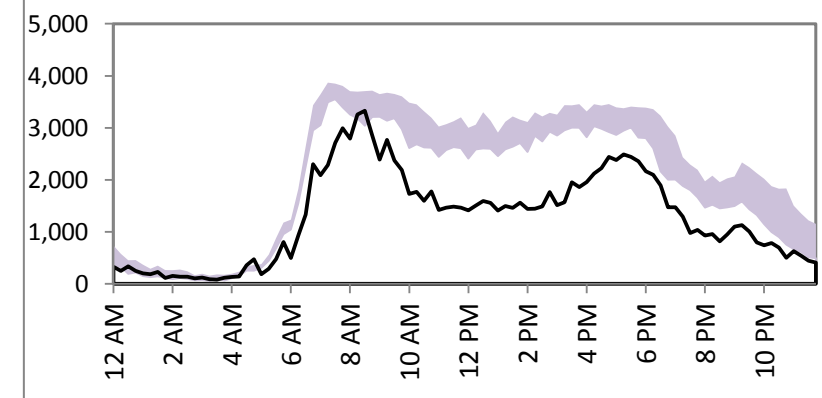
SR 520 Bridge

WB	EB
<b>-37%</b>	<b>-38%</b>
32,300	30,900
51,600	49,500

SR 520 WB Bridge



SR 520 EB Bridge



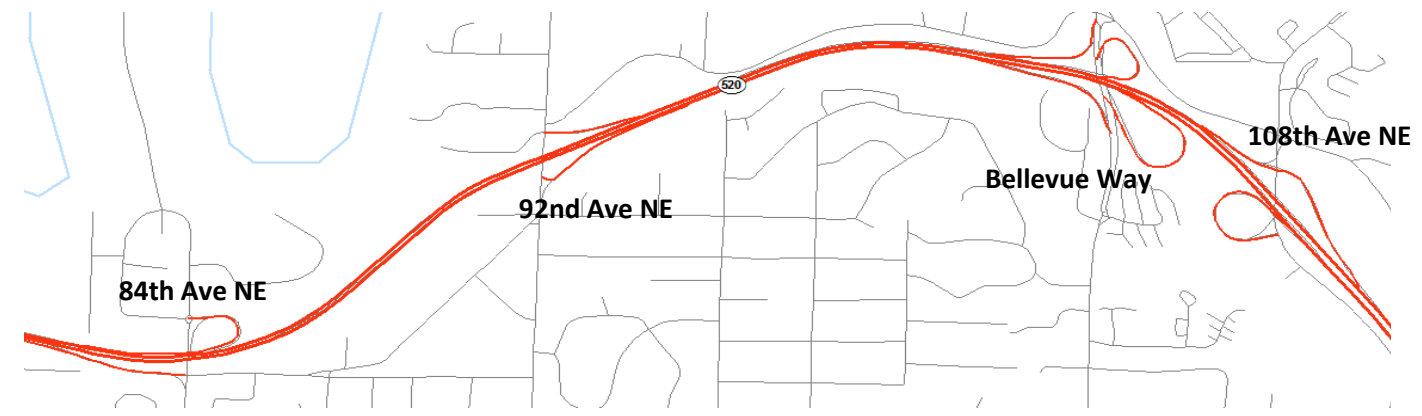
### Ramp Volume

Montlake Blvd		Lk Wa Blvd
WB on ramp	WB exit	WB exit
<b>12%</b>	<b>-31%</b>	<b>-30%</b>
15,200	6,700	3,500
13,600	9,700	5,000

84th Ave NE	92nd Ave NE	Bellevue Way		108th Ave NE	
WB on ramp	WB exit	NB to WB on ramp	SB to WB on ramp	WB on ramp	WB exit
<b>-54%</b>	<b>21%</b>	<b>-34%</b>	<b>-31%</b>	<b>-23%</b>	<b>-2%</b>
2,600	4,600	2,300	3,500	2,400	12,000
5,700	3,800	3,500	5,100	3,100	12,300



<b>15%</b>	<b>-29%</b>	<b>-41%</b>
14,100	8,600	2,900
12,300	12,100	4,900
EB exit	EB on ramp	EB on ramp
<b>Montlake Blvd</b>	<b>Lk Wa Blvd</b>	



<b>-49%</b>	<b>2%</b>	<b>-30%</b>	<b>7%</b>
2,900	5,000	6,300	11,200
5,700	4,900	9,000	10,500
EB exit	EB on ramp	EB exit	EB on ramp
<b>84th Ave NE</b>	<b>92nd Ave NE</b>	<b>Bellevue Way</b>	<b>108th Ave NE</b>

# SR 520 Tolling: Traffic Monitoring

## I-90 Detail

Wednesday, January 11, 2012

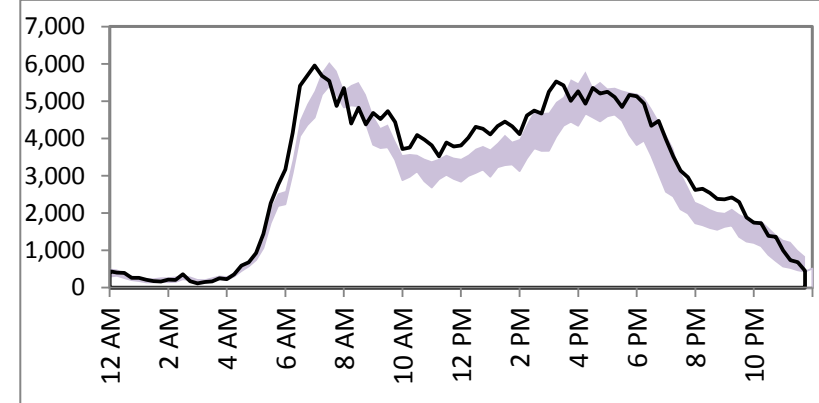
### Mainline Volume



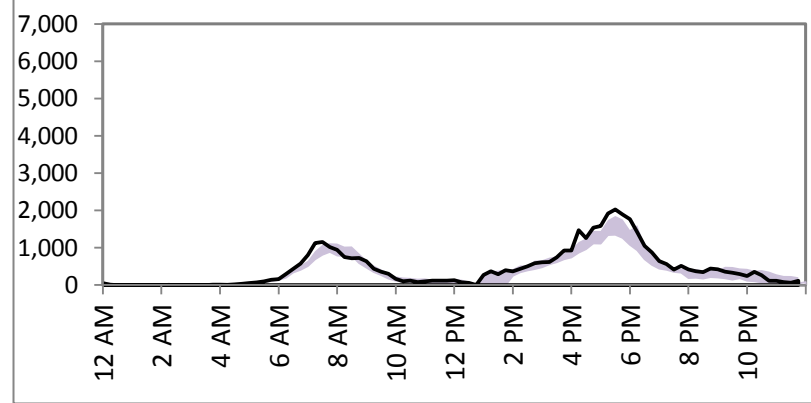
I-90 Bridge

WB	EB
<b>12%</b>	<b>13%</b>
77,100	77,800
68,800	69,100

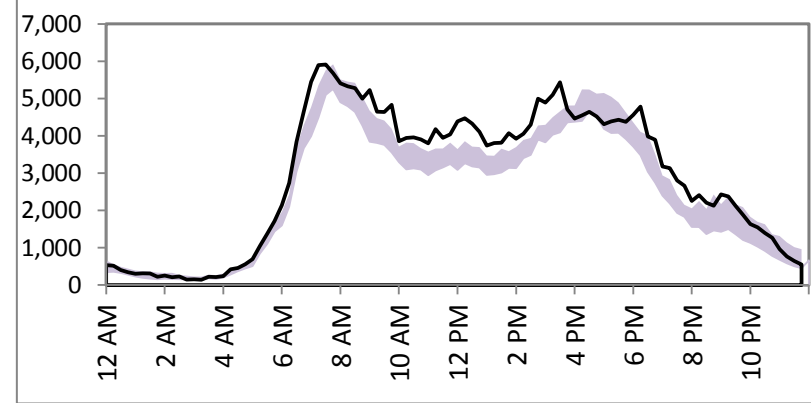
I-90 WB Bridge



I-90 REV Bridge



I-90 EB Bridge



### Bellevue Way Ramp Volume

I-90 EB to Bellevue Way	Bellevue Way to I-90 WB
<b>16%</b>	<b>8%</b>
9,400	10,000
8,100	9,300

# SR 520 Tolling: Traffic Monitoring

## SR 522 Detail

Wednesday, January 11, 2012

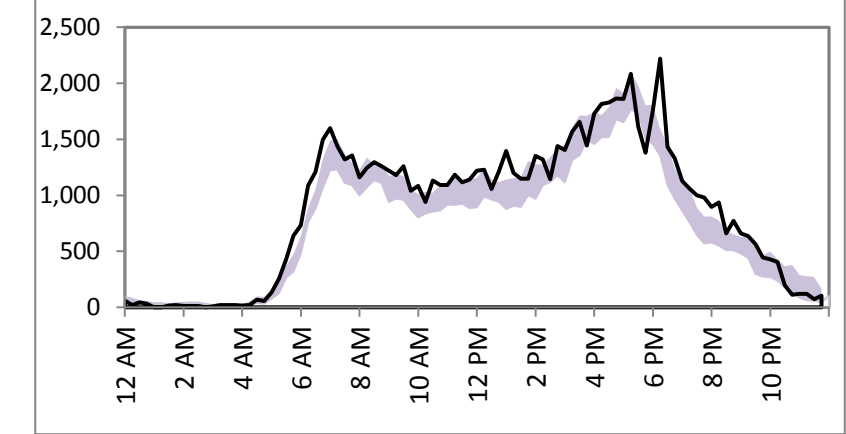
— Wednesday, January 11, 2012  
 ■ Typical Range (10-90%ile, M-F, 10/29-11/18 & 11/26-12/16)

### Mainline Volume

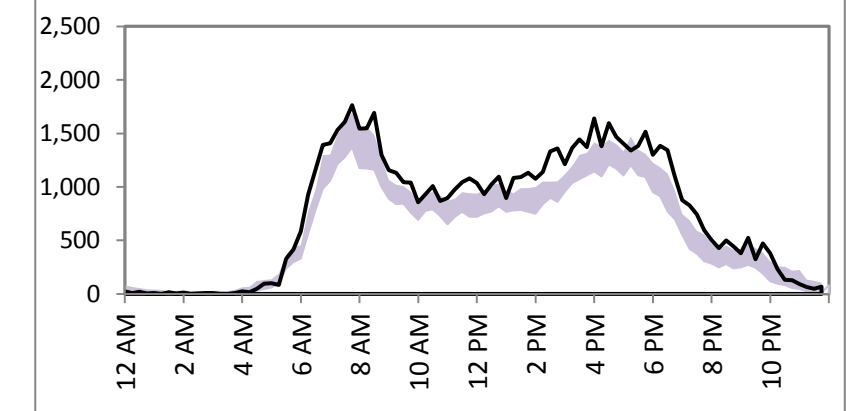


83rd PI NE	
WB	EB
<b>11%</b>	<b>20%</b>
20,900	18,200
18,900	15,200

SR 522 WB at 83rd Ave NE

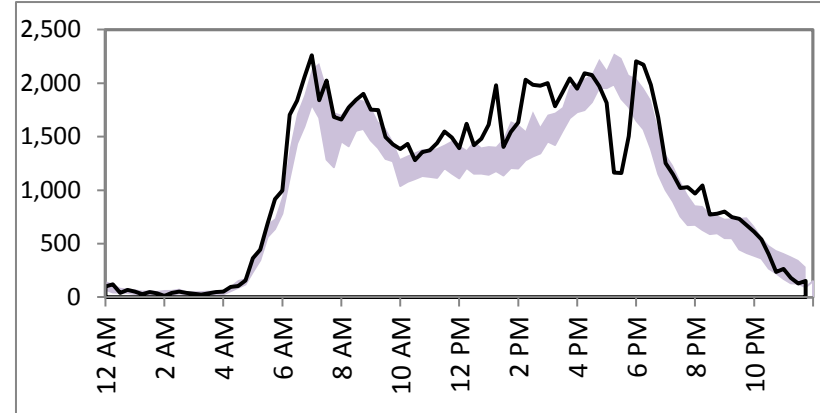


SR 522 EB at 83rd Ave NE

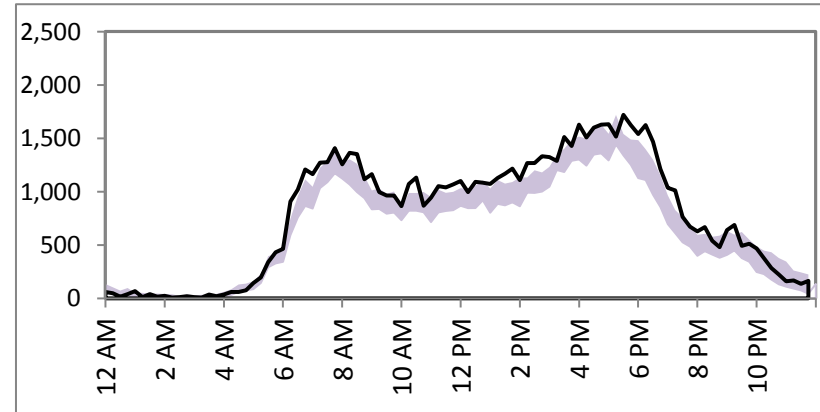


68th Ave NE	
WB	EB
<b>10%</b>	<b>14%</b>
26,500	19,000
24,000	16,700

SR 522 WB at 68th Ave NE

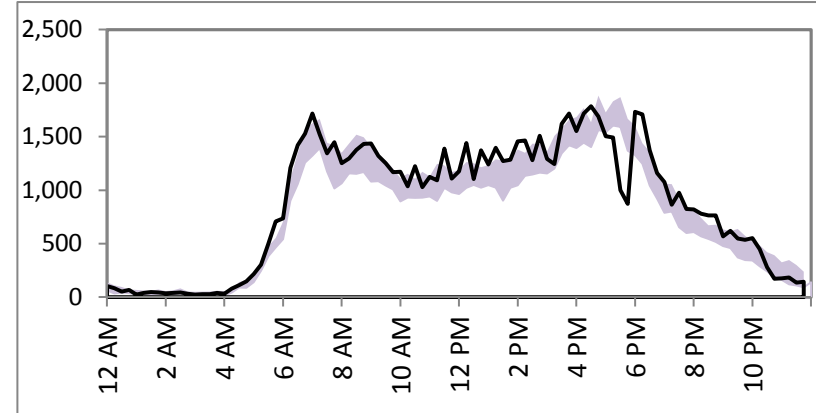


SR 522 EB at 68th Ave NE

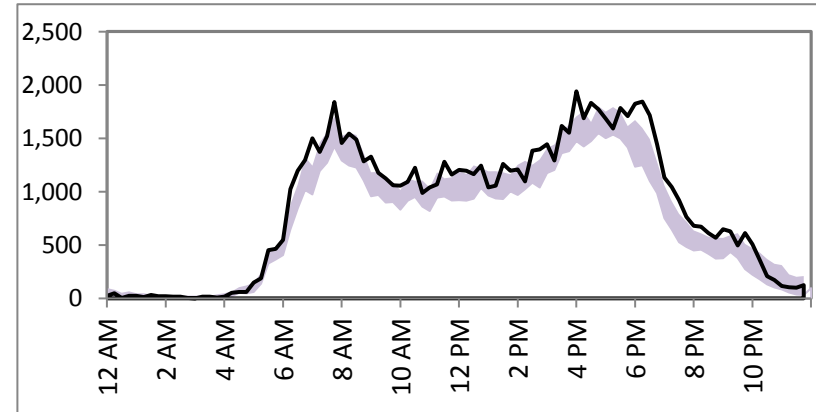


73rd Ave NE	
WB	EB
<b>7%</b>	<b>13%</b>
21,000	20,800
19,700	18,400

SR 522 WB at 73rd Ave NE

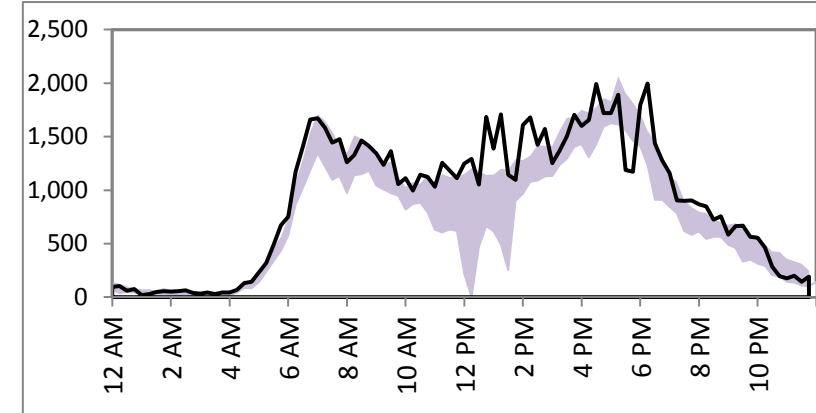


SR 522 EB at 73rd Ave NE

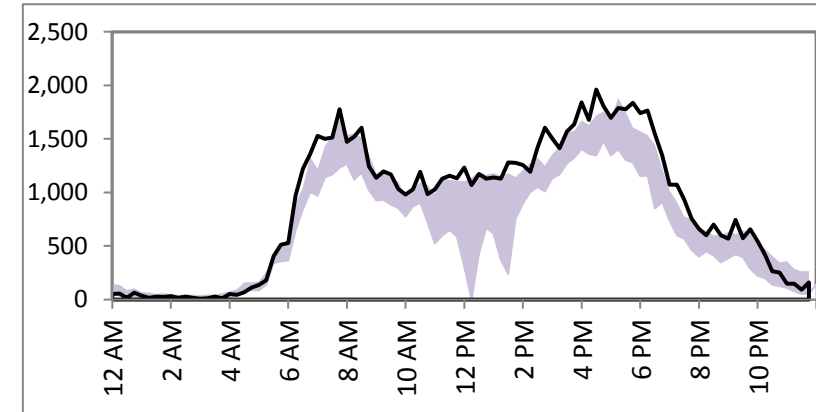


77th Ct NE	
WB	EB
<b>9%</b>	<b>13%</b>
21,900	21,000
20,100	18,600

SR 522 WB at 77th Ct NE

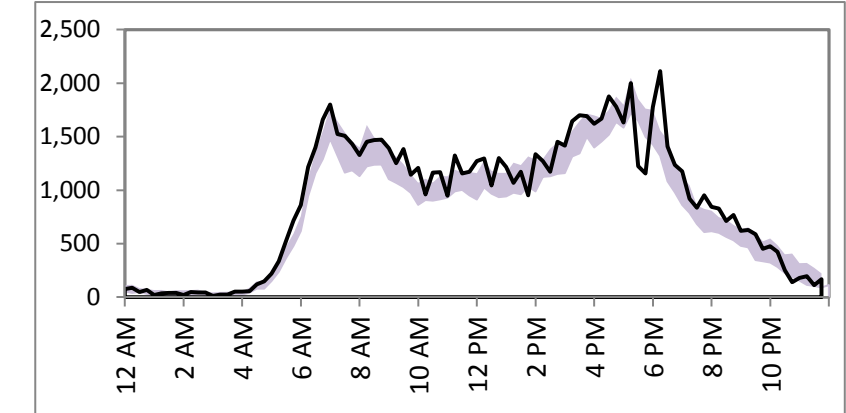


SR 522 EB at 77th Ct NE

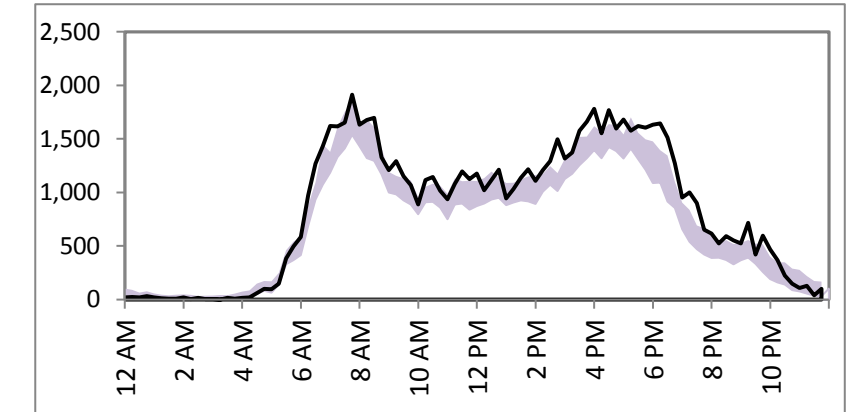


80th Ave NE	
WB	EB
<b>8%</b>	<b>13%</b>
21,500	20,200
20,000	17,800

SR 522 WB at 80th Ave NE



SR 522 EB at 80th Ave NE

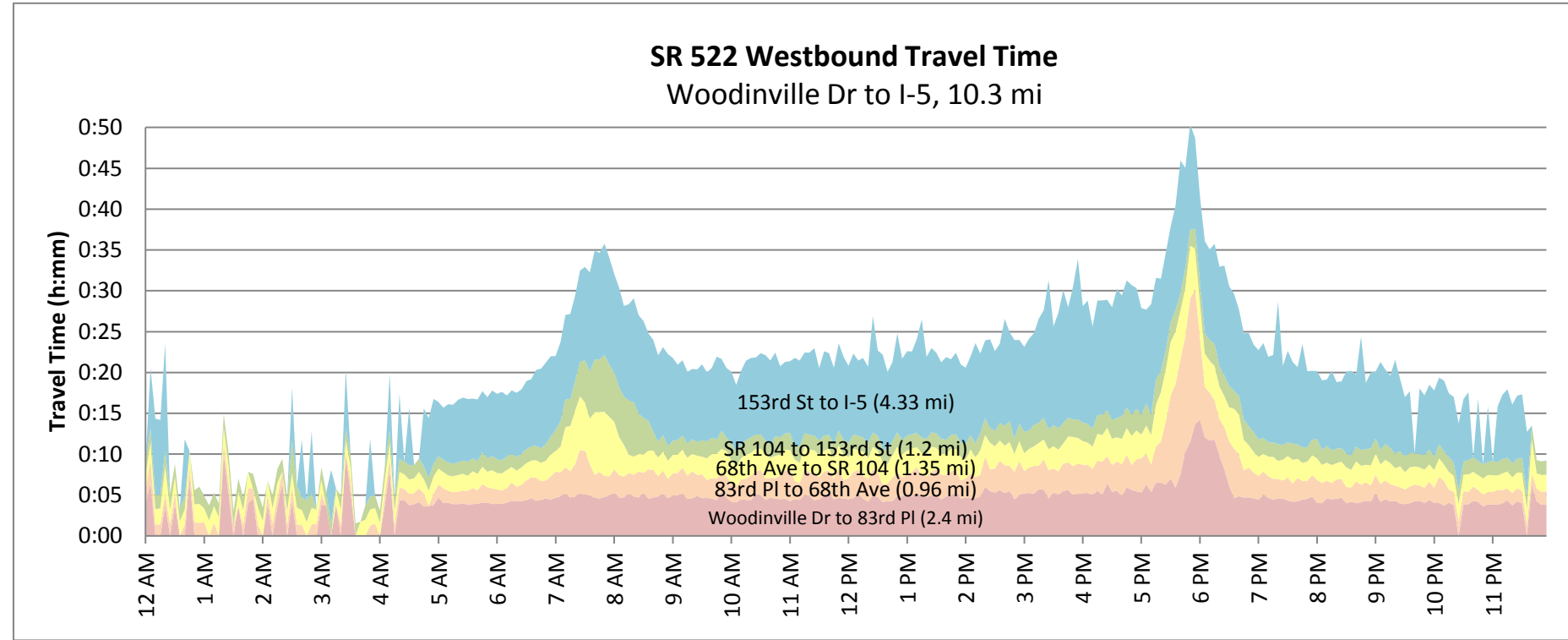


**SR 520 Tolling: Traffic Monitoring**

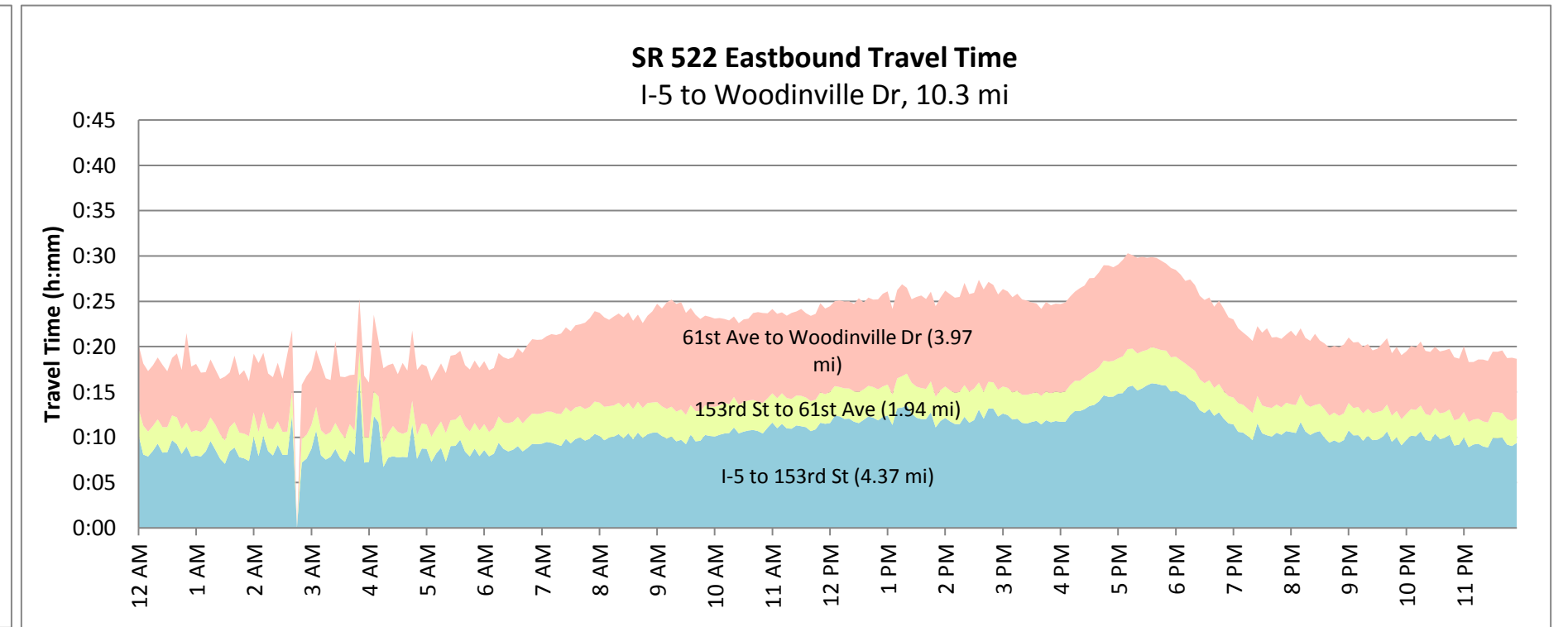
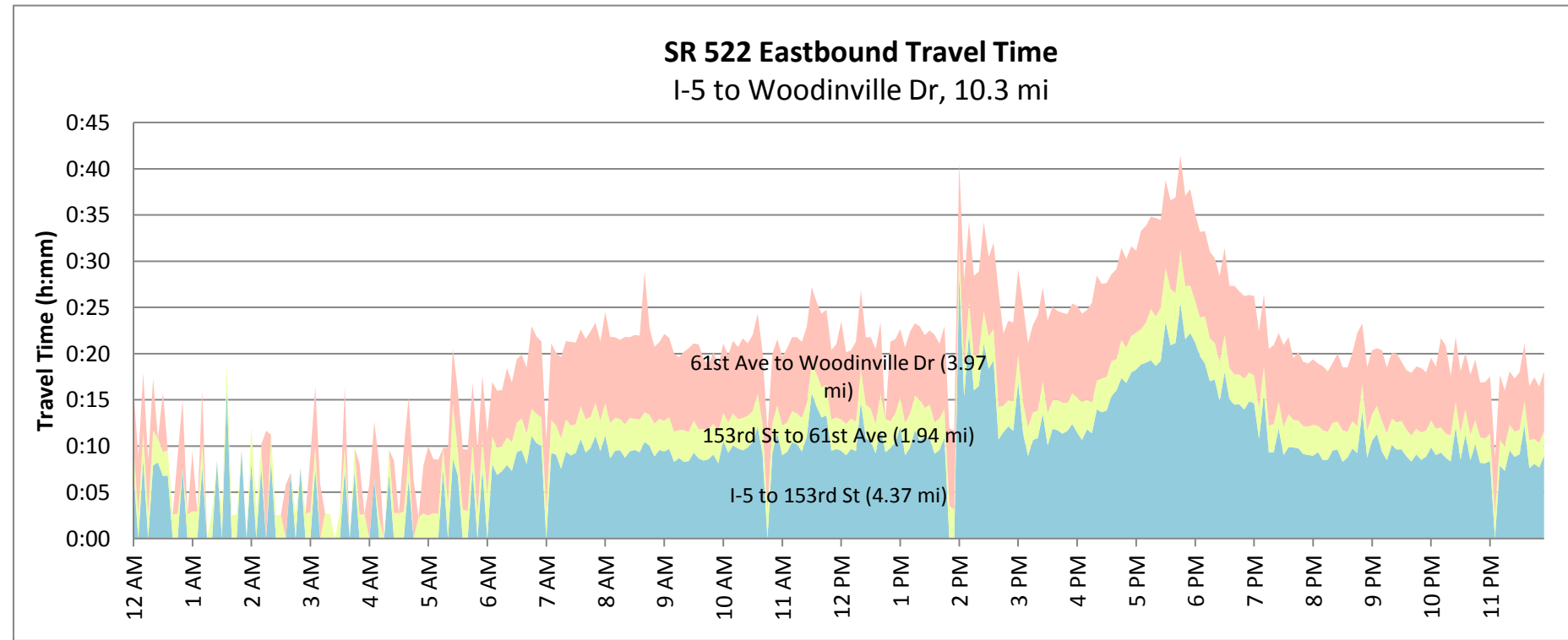
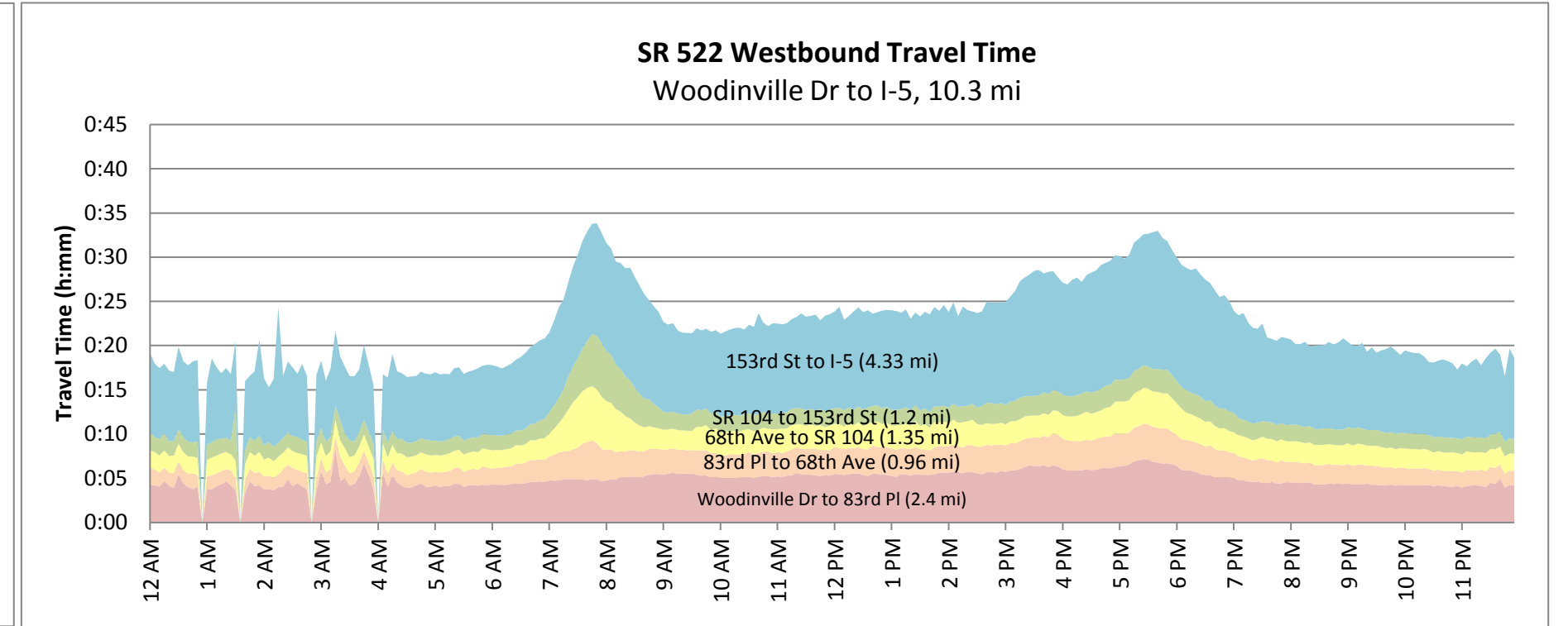
**SR 522 Travel Times**

**Wednesday, January 11, 2012**

1/11/2012



M-F, 10/29-11/18 & 11/26-12/16



Note: travel time data may be unavailable during time periods with low traffic volume