

MONTHLY PROJECT OVERVIEW

I-405, South Bellevue Widening Project

December 2008

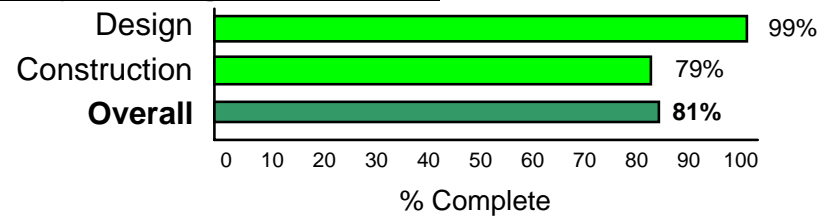
Project Location: I-405, 112th Ave SE to SE 8th St
Design-Builder: Atkinson

PIN: 840541F, 840509A, 840541G
WIN: U40541F

Design / Build Contract Summary

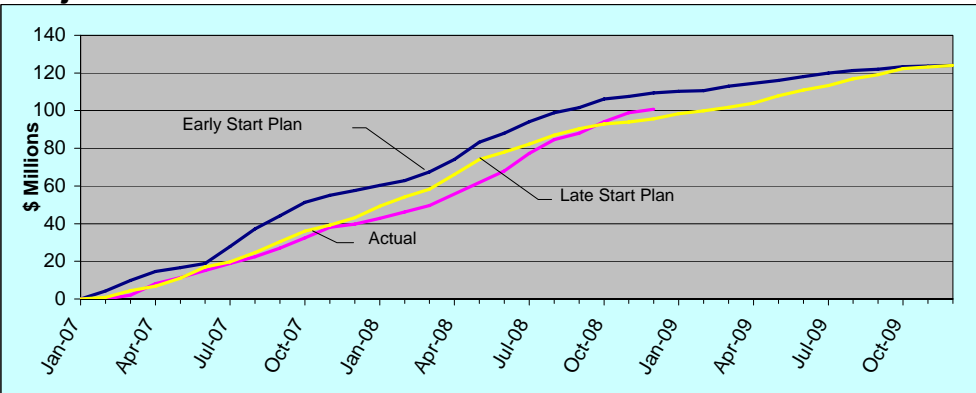
Contract Award: February 16, 2007
 Notice to Proceed: March 15, 2007
 Original Contract Time: 934 Calendar Days
 Original Substantial Completion: October 2009
 Original Contract Amount: \$124,000,000
 Revised Contract Amount: \$124,000,000

Project Progress to Date



Project Status as of: December 31, 2008
 Contract Days Elapsed: 657 of 934 = 70.3%
 Contract Amount Earned to Date: \$100,803,708 = 81.3%
 Contract Amount Earned This Period: \$1,892,588 = 1.5%
 Current Projected Completion Date: Oct. 2009 (on schedule)

Project Cash Flow



December 2008 Highlights



Excavation in progress at Pond C, near the former Wilburton tunnel site



Constructing rock wall and slope protection at Coal Creek Parkway



New southbound bridge over I-90 opened to traffic the night of December 15th



Dirt work at wall 2070, near SE 8th street

Design-Build Schedule Summary

Design: Design is functionally complete. Design team will continue to support construction to the end of the project.

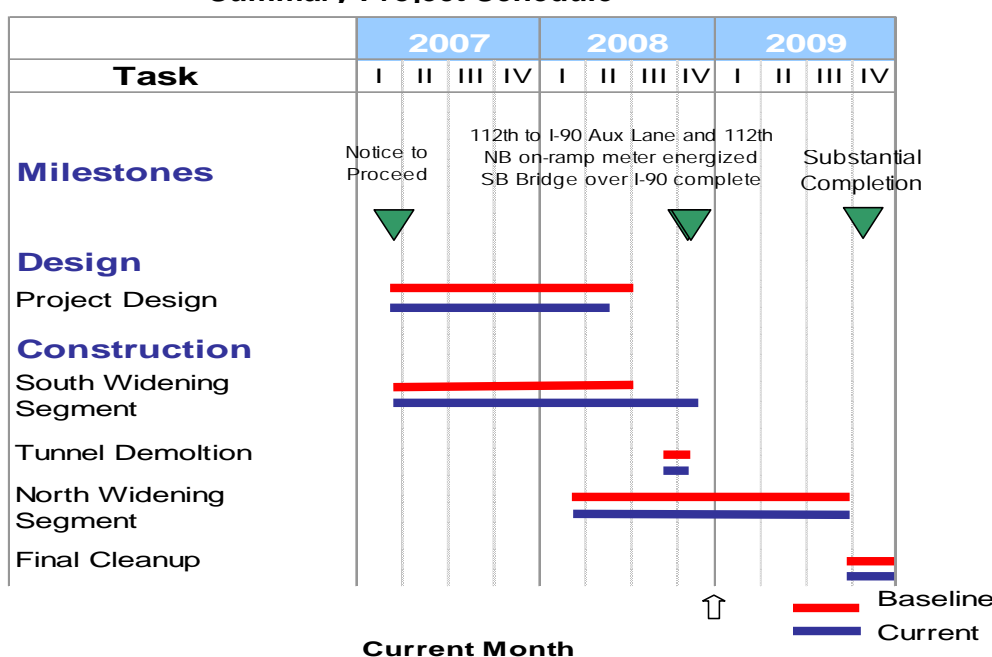
Construction: On northbound I-405 between 112th Ave SE and I-90, crews are currently waiting for drier weather to restripe the highway and open the new lane and 112th ramp meter. Coal Creek Parkway has been returned to its pre-project configuration. Shifted traffic onto the new southbound I-90 bridge. Crews have started stripping the last of the formwork from the new southbound I-405 bridge at I-90. The subgrade north of the Wilburton Tunnel location has been paved, and is awaiting the cement concrete paving. Installed illumination and traffic monitoring systems between SE 8th and I-90 southbound. Checked, reinforced and re-applied erosion control measures to stabilize exposed soil for the wet season.

Quality Control / Quality Assurance

The Design Builder's Quality Assurance and WSDOT Quality Verification teams continue work to close punch list items and NCIs (non-conformance issues) generated on this project. The teams are also performing audits on material's documentation to ensure compliance with specifications and contract requirements.

Material's testing data is being entered into SAMs (Statistical Analysis of Materials) software program for evaluation. SAMs is generating high composite pay factors for the concrete and asphalt used in the construction of this project's roadway sections. High composite pay factors indicate superior quality materials being placed.

Summary Project Schedule



Risks / Challenges / Issues

Winter weather and shorter days are creating challenges for work progress and erosion control. Minimizing the construction traffic control impacts to the public remains a challenge.

Public Information & Community Outreach

Informed public of closures using construction updates on WSDOT web sites and press releases. Held media availability to unveil new southbound bridge over I-90 and inform the public of the HOV split. Updated project milestone map on web site.

Upcoming Activities - Winter 2008

Opening northbound lanes from 112th to I-90, turning on ramp meter at 112th northbound onramp. Beginning bridge and wall construction at SE 8th Street for southbound bridge widening.

For more information, Call 425.401.4143 or 425.456.8624 or visit www.wsdot.wa.gov/Projects/i405/112thAveToSE8th/

IT'S YOUR NICKEL. WATCH IT WORK.

"Washington's Future Just Got Better"
MAKING EVERY DOLLAR COUNT.

