

MONTHLY PROJECT OVERVIEW

I-405, South Bellevue Widening Project

January 2008

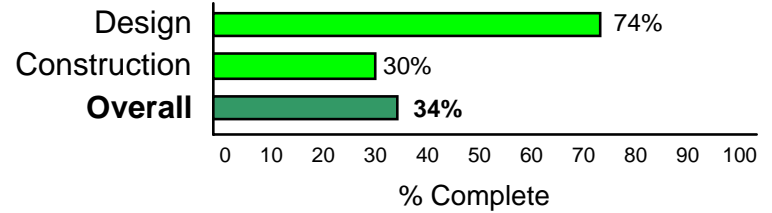
Project Location: I-405, 112th Ave SE to SE 8th St
Design-Builder: Atkinson

PIN: 840541F, 840509A, 840541G
WIN: U40541F

Design / Build Contract Summary

Contract Award: February 16, 2007
 Notice to Proceed: March 15, 2007
 Original Contract Time: 934 Calendar Days
 Original Substantial Completion: October 2009
 Original Contract Amount: \$124,000,000
 Revised Contract Amount: \$124,285,586

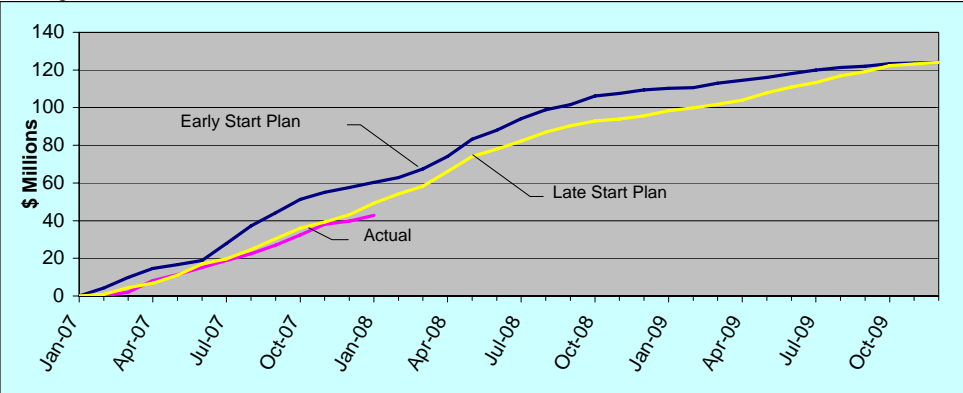
Project Progress to Date



Project Status as of: **January 31, 2008**

Contract Days Elapsed: 319 of 934 = 34.2%
 Contract Amount Earned to Date: \$42,882,785 = 34 %
 Contract Amount Earned This Period: \$3,048,552 = 2.0%
 Current Projected Completion Date: Oct. 2009 (on schedule)

Project Cash Flow



January 2008 Highlights



Construction of sediment pond at Wall 2105 to accommodate runoff.



Crews demonstrate proper erosion control methods at Pier 3, CCP.



Crew member relocates rebar cage in preparation to set at Pier 5.



Crew member sand blasts in preparation for final lift of blister pour at Pier 6, I-90.

Design-Build Schedule Summary

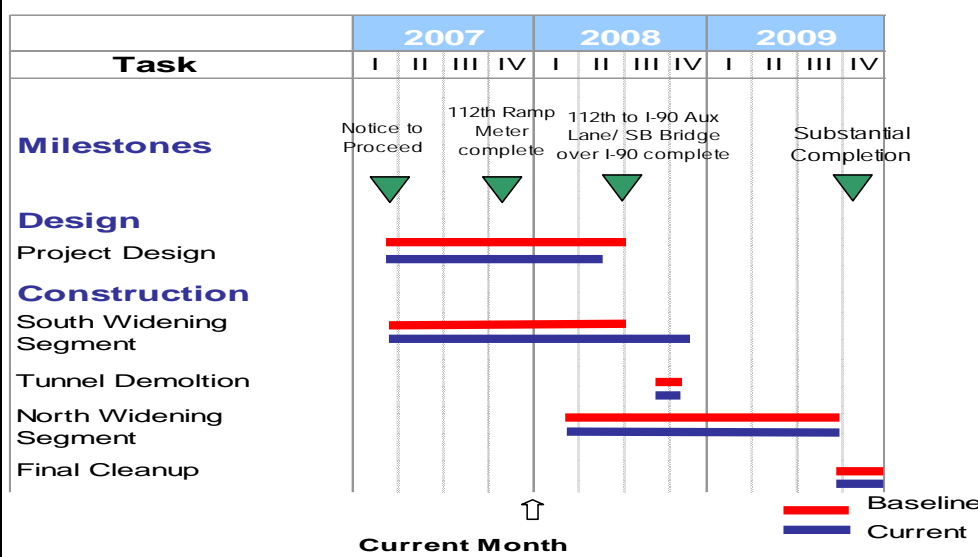
Design: The team has focused on finalizing RFC plans for work occurring in the I-90 Interchange Area and completing final design plans for work in the Stage 2 Area (I-90 to SE 8th Street). All RFC plans should be complete for the project by June 2008.

Construction: At the new SB Bridge over I-90, crews are forming and pouring at columns 4 & 5, building Pier 2 cap falsework, and forming and pouring Pier 6; at Coal Creek Pkwy bridge widening, crews are focusing on Pier 2 & 3 cross-beams and Pier 1 & 4 curtain walls; crews completed installation of soldier piles for wall 2105, and have one 9 more pilesto install at wall 2100 (with coordinated overhead powerline shutoff). Walls 2100 & 2105 are located between 112th Ave SE and Coal Creek Pkwy on the east side of NB I-405.

Quality Control / Quality Assurance

The Design Builder and WSDOT continue joint training for the Project Inspection Team. Training has been completed for the inspection of bridge structures. The Project currently has two bridges under construction, the new I-405 Bridge over I-90 and the widening of the existing Coal Creek Bridge. The Design Builder is providing the inspection and material testing for these bridges. Concrete testing data is being entered into SAMs, the statistical analysis of materials software program and the Design Builder has achieved a CPF of 1.05 for concrete strength. The CPF is a measure of quality, with a 1.05 being a superior rating.

Summary Project Schedule



Risks / Challenges / Issues

Railroad Tracks must be abandoned by May 1, 2008 to maintain schedule, but BNSF anticipates that track will be abandoned by March 1, 2008. Project has had challenges with erosion control during winter storms.

Public Information & Community Outreach

Project update folio will be mailed on Feb 8th to 2,500 households and businesses along project limits.

Upcoming Activities -February 2008

Finish soldier pile for wall 2100 along NB I-405 between 112th Ave SE and Coal Cr. Pkwy. Set girders at Coal Creek and begin superstructure. Form and pour caps for Pier 2, 4 & 5, and continue Pier 6 construction for the SB Bridge over I-90.

For more information, Call 425.401.4143 or 425.450.2561 or visit www.wsdot.wa.gov/Projects/i405/112thAvetoSE8th/

IT'S YOUR NICKEL. WATCH IT WORK.

Washington's Future Just Got Better
MAKING EVERY DOLLAR COUNT.

Washington State Department of Transportation