

Appendix C

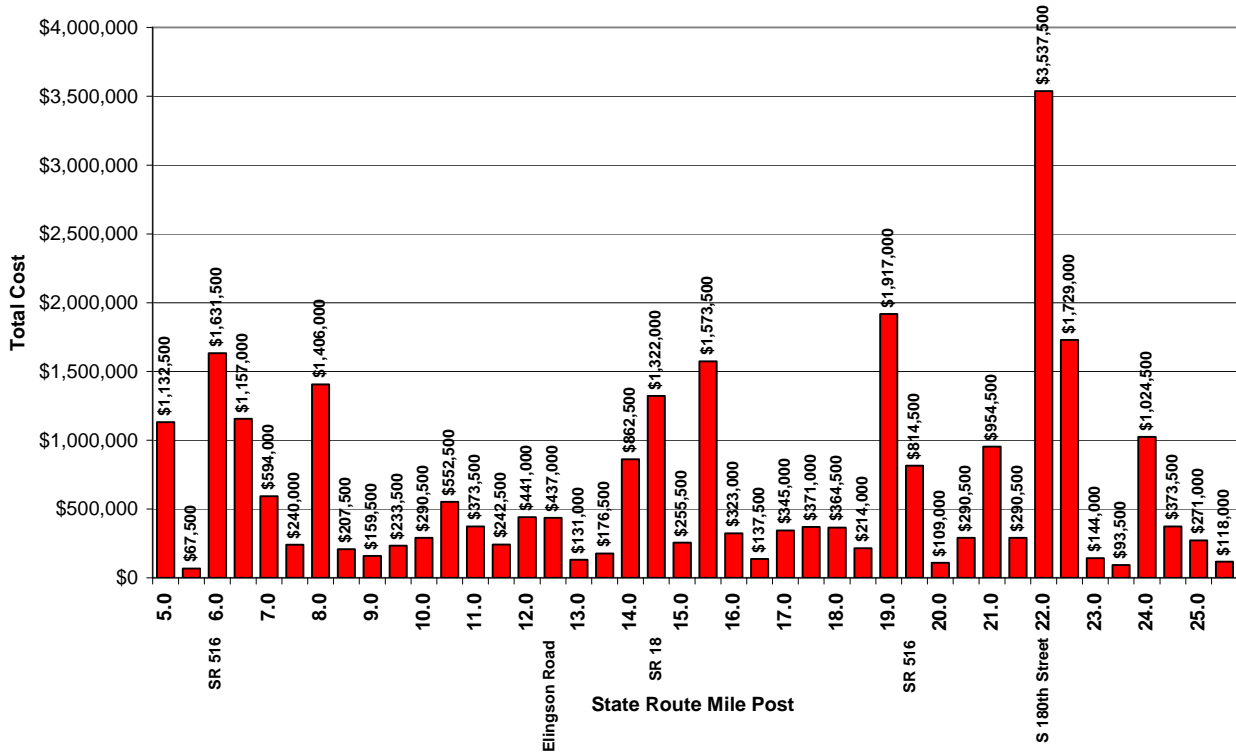
Accident History Data Charts

List of Exhibits

EXHIBIT C-1: SOCIETAL COST OF ACCIDENTS ON SR 167 SOUTHBOUND (2003-2005)1
EXHIBIT C-2: SOCIETAL COST OF ACCIDENTS ON SR 167 INCLUDING RAMPS (2003-2005).....2
EXHIBIT C-3: SOCIETAL COST OF ACCIDENTS ON SR 167 NORTHBOUND (2003-2005).....3
EXHIBIT C-4: TOTAL ACCIDENTS ON SR 167 BY HOUR OF DAY (2003-2005)4
EXHIBIT C-5: TOTAL ACCIDENTS ON SR 167 BY LOCATION (2003-2005)5
EXHIBIT C-7: TOTAL ACCIDENTS PER HALF-MILE ON SR 167 INCLUDING RAMPS AND CROSSINGS (2003-2005)7

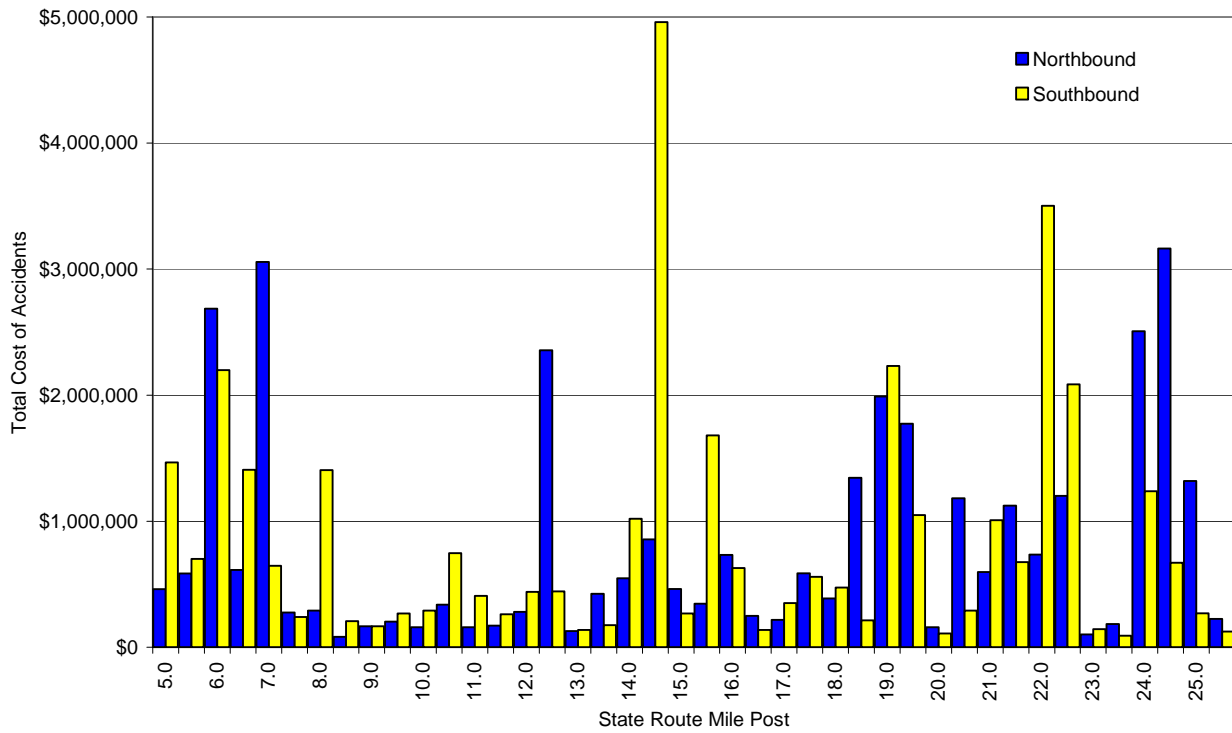
**Exhibit C-1
Societal Cost of Accidents on SR 167 Southbound (2003-2005)**

**Societal Cost of Accidents
Southbound SR 167
Three Years (2003 - 2005)**



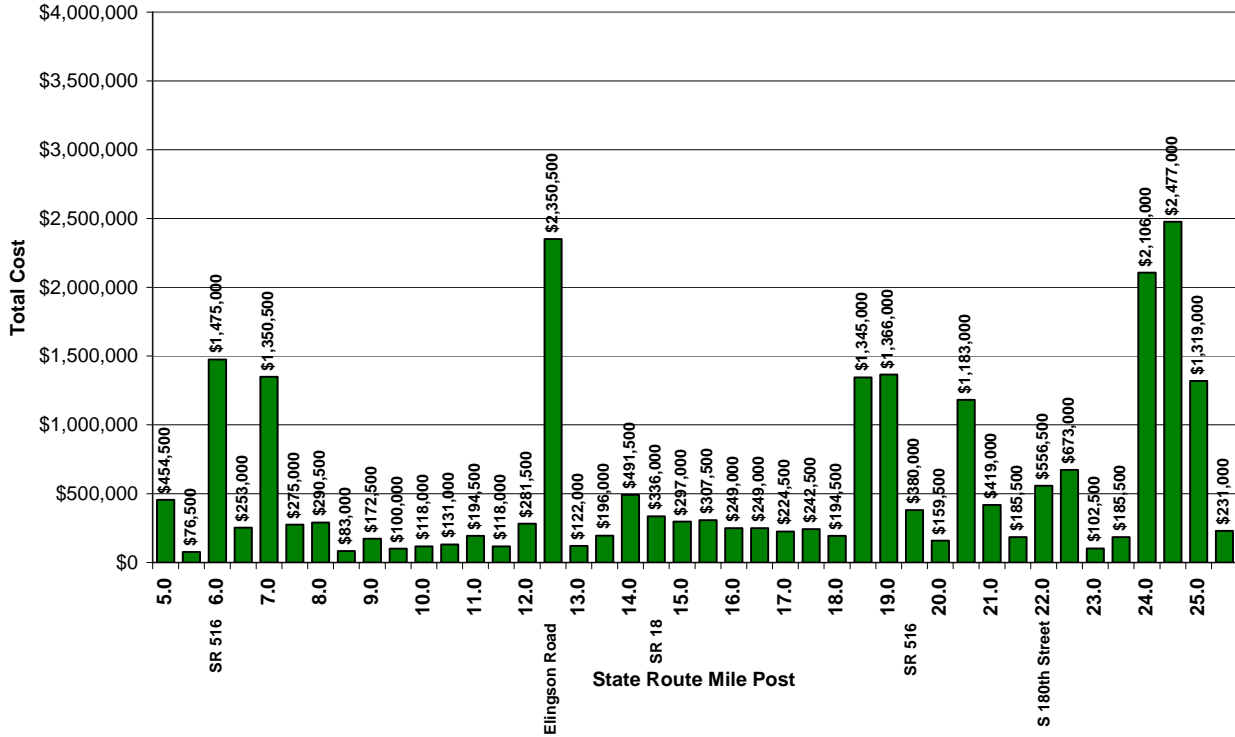
**Exhibit C-2
Societal Cost of Accidents on SR 167 Including Ramps (2003-2005)**

Total Societal Cost of Accidents
SR 167 including Ramps
Three Years (August 2002 - July 2005)



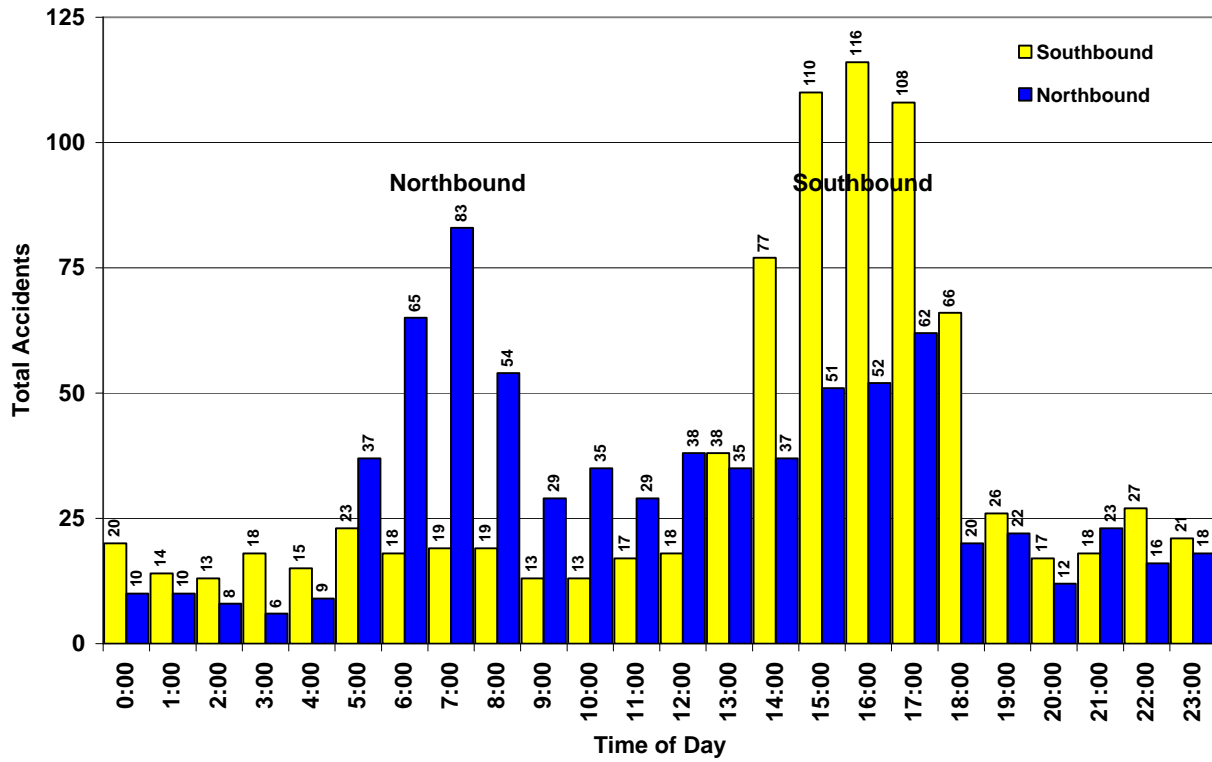
**Exhibit C-3
Societal Cost of Accidents on SR 167 Northbound (2003-2005)**

**Societal Cost of Accidents
Northbound SR 167
Three Years (2003 - 2005)**



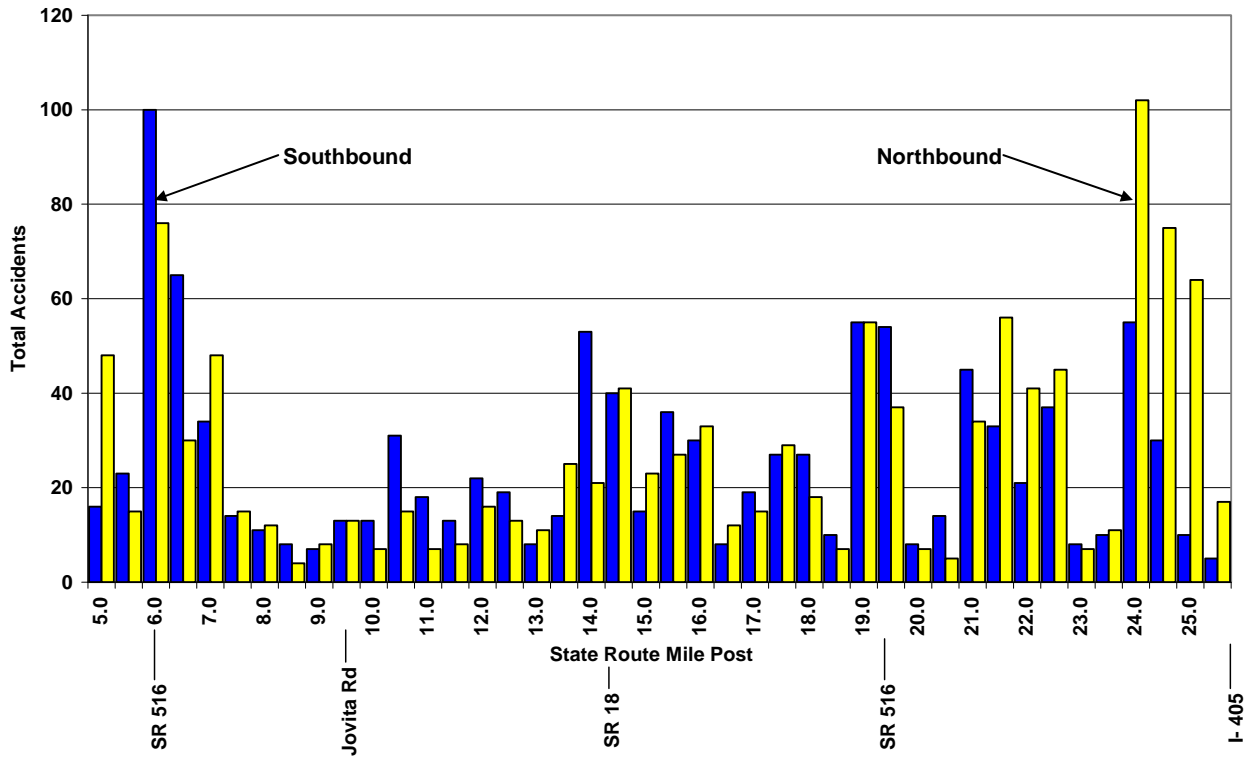
**Exhibit C-4
Total Accidents on SR 167 by Hour of Day (2003-2005)**

**SR 167
Total Accidents by Hour of Day
Three Years 2003 - 2005**



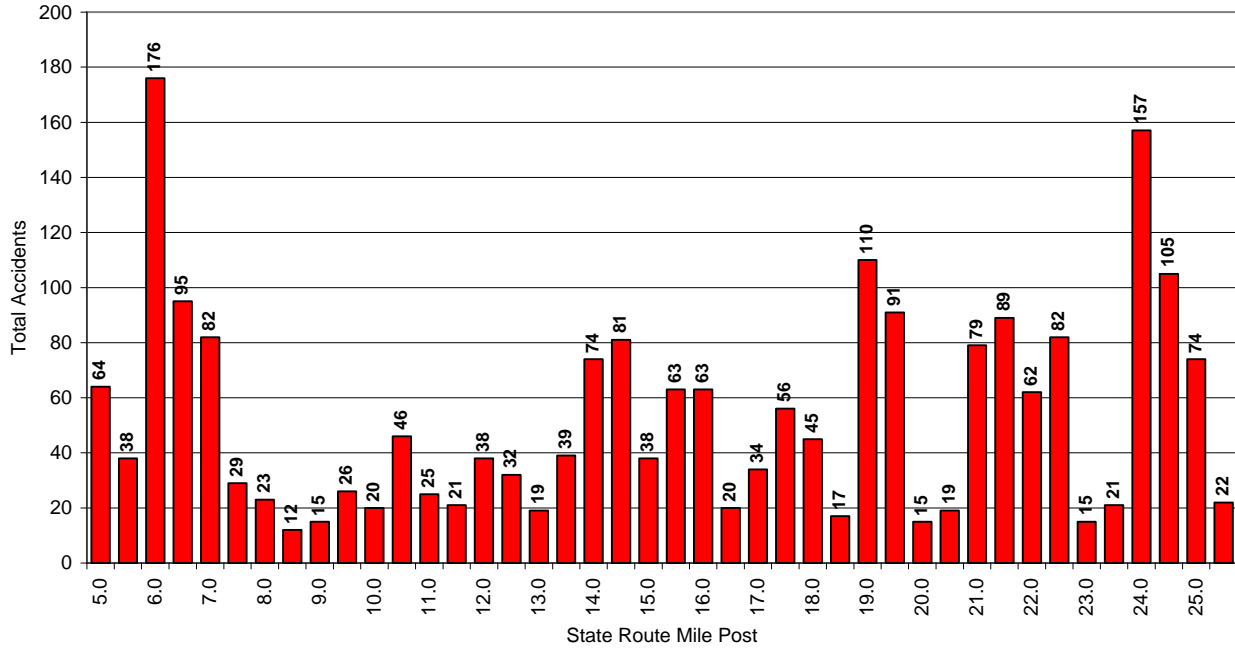
**Exhibit C-5
Total Accidents on SR 167 by Location (2003-2005)**

Accidents on SR 167 by Location for 2003 to 2005



**Exhibit C-6
Total Accidents per Half-Mile on SR 167 Including Ramps (2003-2005)**

**Total Accidents per 1/2 Mile
SR 167 (Including Ramps)
Three Years (August 2002 - July 2005)**



**Exhibit C-7
Total Accidents per Half-Mile on SR 167 Including Ramps and Crossings (2003-2005)**

**Total Accidents per 1/2 Mile
SR 167 (Including Ramps and Crossings)
Three Years (August 2002 - July 2005)**

