

New Vessel Construction Update

Paula J. Hammond, P.E.
Secretary

David L. Dye, P.E.
Deputy Secretary

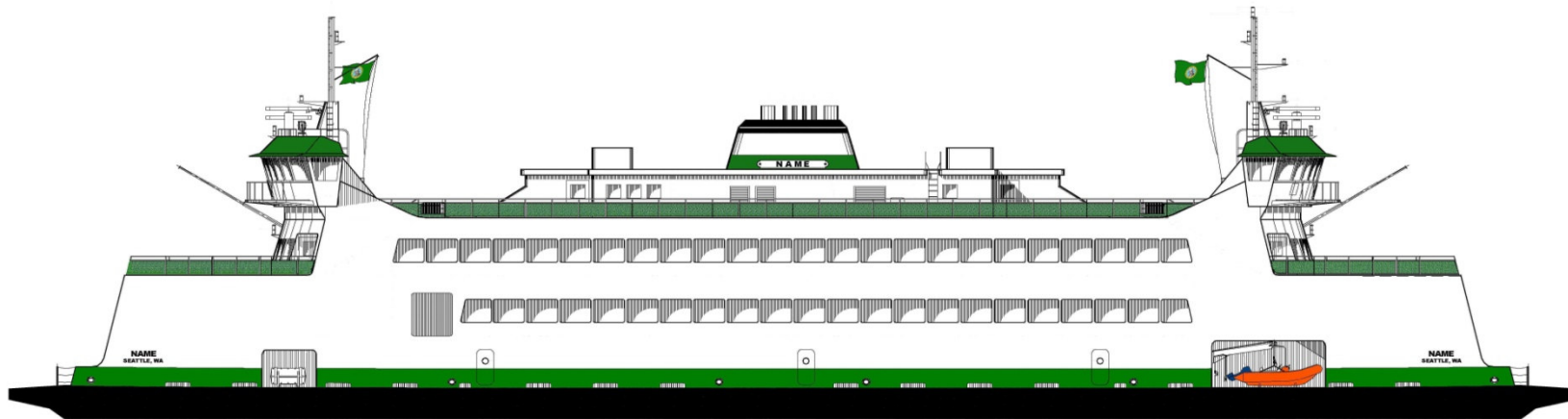
Steve Reinmuth
Chief of Staff

David Moseley
Assistant Secretary
Ferries Division

Captain George Capacci
Deputy Chief, Operations & Construction
Ferries Division

Washington State Transportation Commission
March 23, 2011

Kwa-di Tabil Class



- 2010 - 2012 constructed
- 750 passengers / 64 vehicles
- *Chetzemoka* (2010), *Salish* (2011), *Kennewick* (2012)

New Builds - M/V *Chetzemoka*



- Construction started Jan. 2009
 - Accepted Sept. 15, 2010
 - Christening Nov 14, 2010
 - In-service Nov. 15, 2010
 - Port Townsend – Coupeville
-
- Traffic Statistics (Nov 15 – Feb 28)
 - Vehicle 18.8% increase over 2010/11
 - Passenger 12.8% increase

New Builds - M/V *Salish*

- Currently 91% complete
- Keel laid date April 19, 2010
- Dec 23, 2010 launch
- Jan 4, 2011 christening
- Feb 7, 2011 moved to Everett Shipyard for final outfitting

- Builders trials April 2011
- Delivery early May 2011
- In Service Summer 2011



M/V *Salish*



New Builds - M/V *Kennewick*

- Vessel is 54% complete
- In construction at Todd's
- Roll out from construction shed April 1, 2011
- Launch & outfitting May 2011
- Builders Trials October 2011
- Delivery October 2011



New Builds – 64-Auto Vessels Budget

Chetzemoka

- Budget of \$76.93M
- Final cost \$80.5M
- \$3.6M or 4.7% over budget

Salish & Kennewick

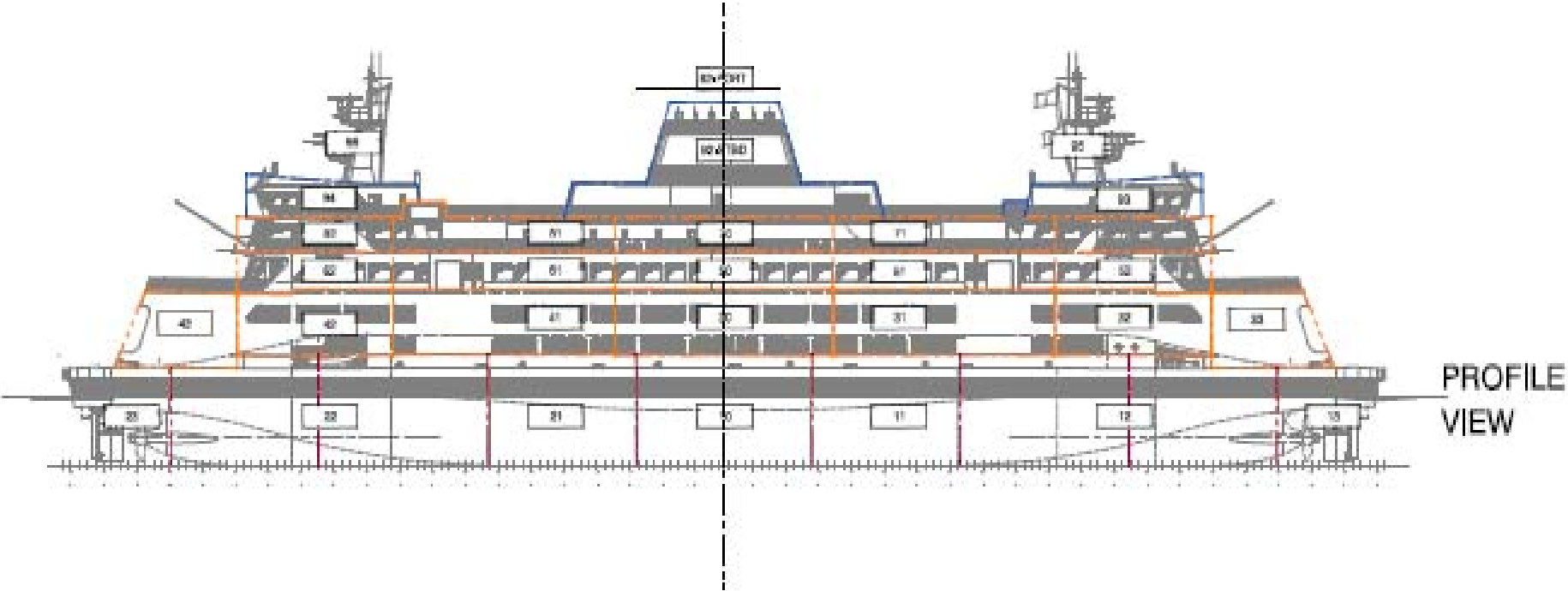
- Budget of \$136.3M was added to the Chetzemoka budget of \$76.93M for a total project budget of \$213.2M for the 3 vessels
- Vessels 2 and 3 were awarded to Todd Pacific Shipyard for \$114.1M on October 13, 2010
- Currently under-budget and on-schedule on the Salish
- Currently under-budget and ahead of schedule on the Kennewick
- Three vessel procurement projected to be under budget

New Builds – 144-Auto Vessels

Detailed Design by Consortium of Shipbuilders

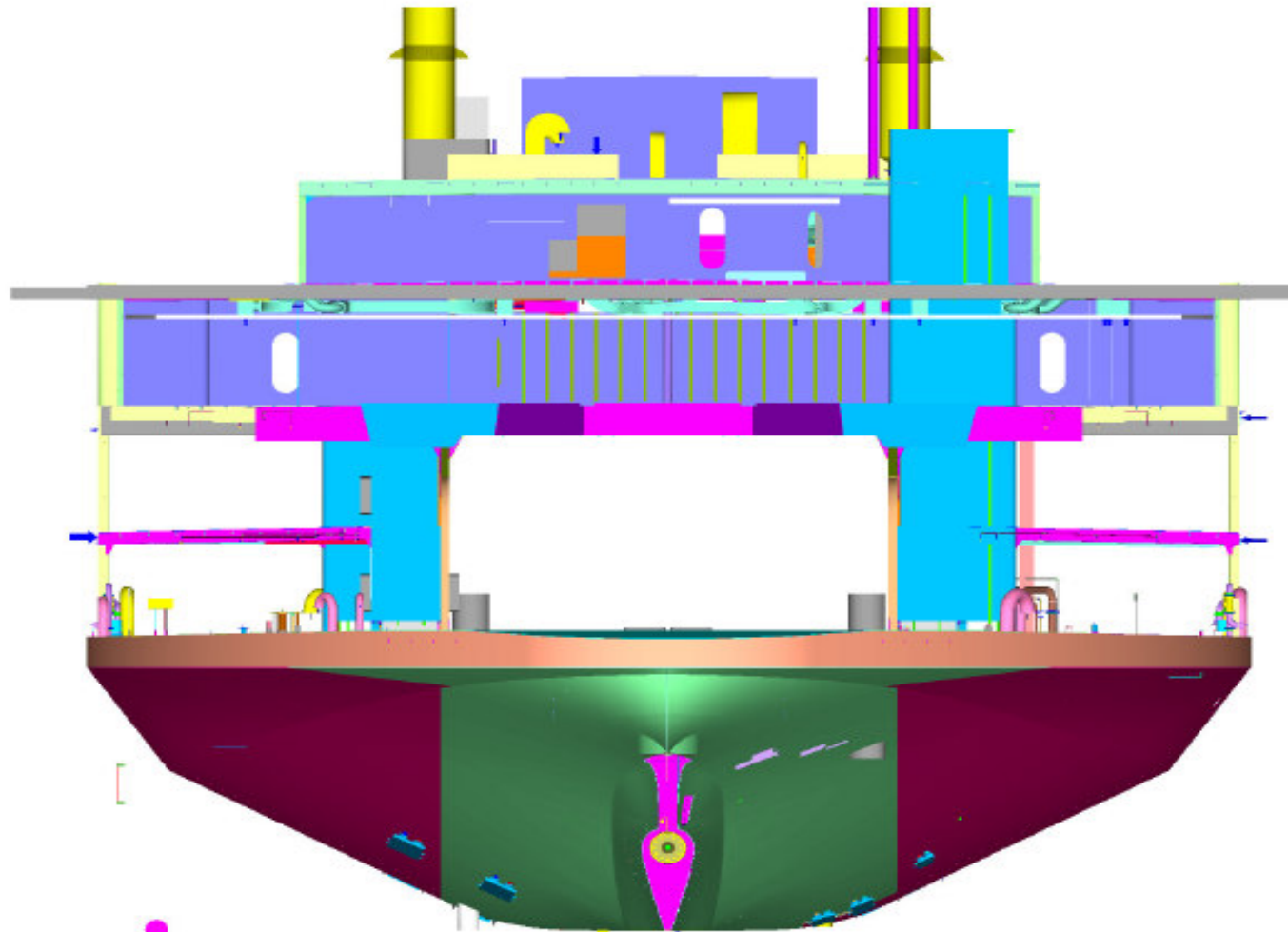
- Estimating is ongoing for the detailed design by the Todd / Nichols / Martinac consortium. If funded, WSDOT will start price negotiations in spring. The final design by the consortium will be complete by June 30, 2011.
- WSDOT construction program estimate will be complete by end of March 2011.
- Detailed drawing review is 90% complete & unit construction module drawings complete for hull units.
- Piping, Outfitting and Electrical System Modeling at 65% completion.
- Propulsion System Contract: Two propulsion diesel systems machinery in storage. One (or two) diesel engines needed pending procurement decision (federally funded). Diesel generators in storage. Components not needed for the 64-Auto Ferries are being maintained & preserved for future installation.
- The Governors Proposed Budget contemplates a steel superstructure.

New Builds – 144-Auto Vessels Construction Assembly Diagram



New Builds – 144-Auto Vessels

3D Model Construction

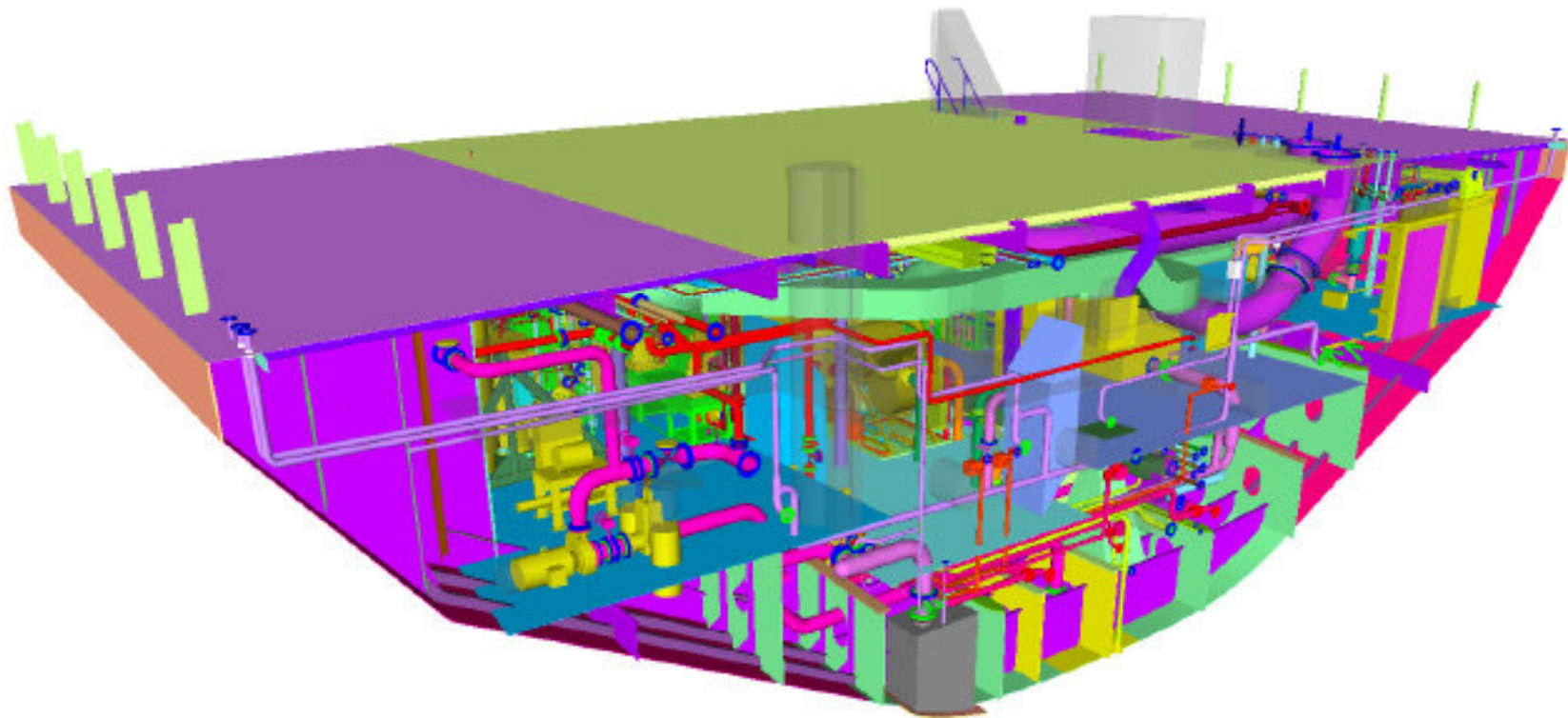


New Builds – 144-Auto Vessels

3D Construction Module - Unit 21 of 37

Machinery Room

Vehicle Deck Level from Above



Questions?

For additional information on New Vessel Construction,
please contact:

Captain George A. Capacci
Deputy Chief, Operations & Construction
Washington State Ferries
WSDOT Ferries Division
(206) 515-3414 or capaccg@wsdot.wa.gov