

WSDOT Ferries Division

2007 Ferry Financing Legislation Status Report: Vehicle Level-of-Service Standards

Paula J. Hammond, P.E.
Secretary

David L. Dye
Deputy Secretary

Steve Reinmuth
Chief of Staff

David Moseley
Assistant Secretary, Ferries Division

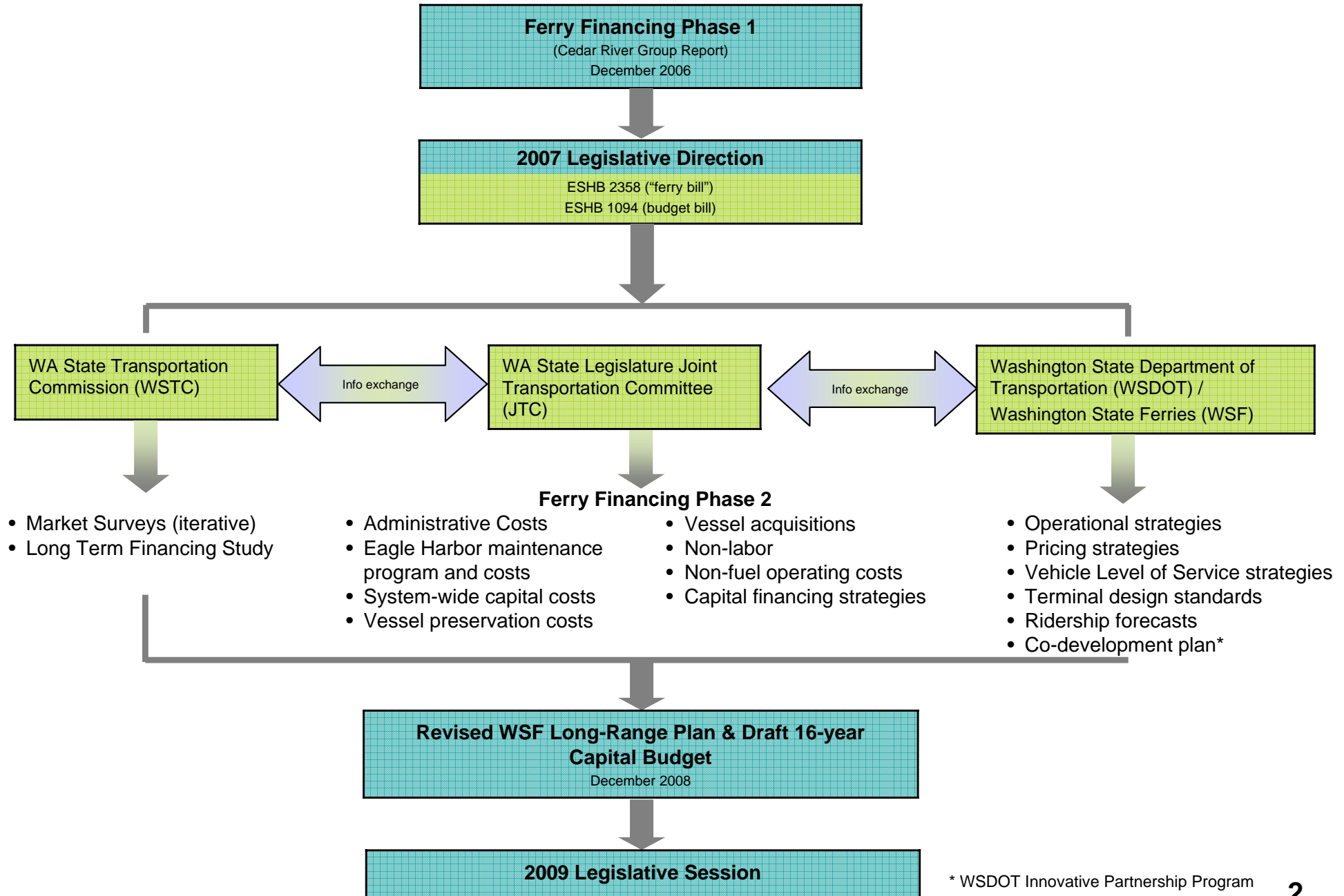
Ray Deardorf
Planning Director, Ferries Division

March 20, 2008



Ferry Finance Legislation

Work Program 2006-2009



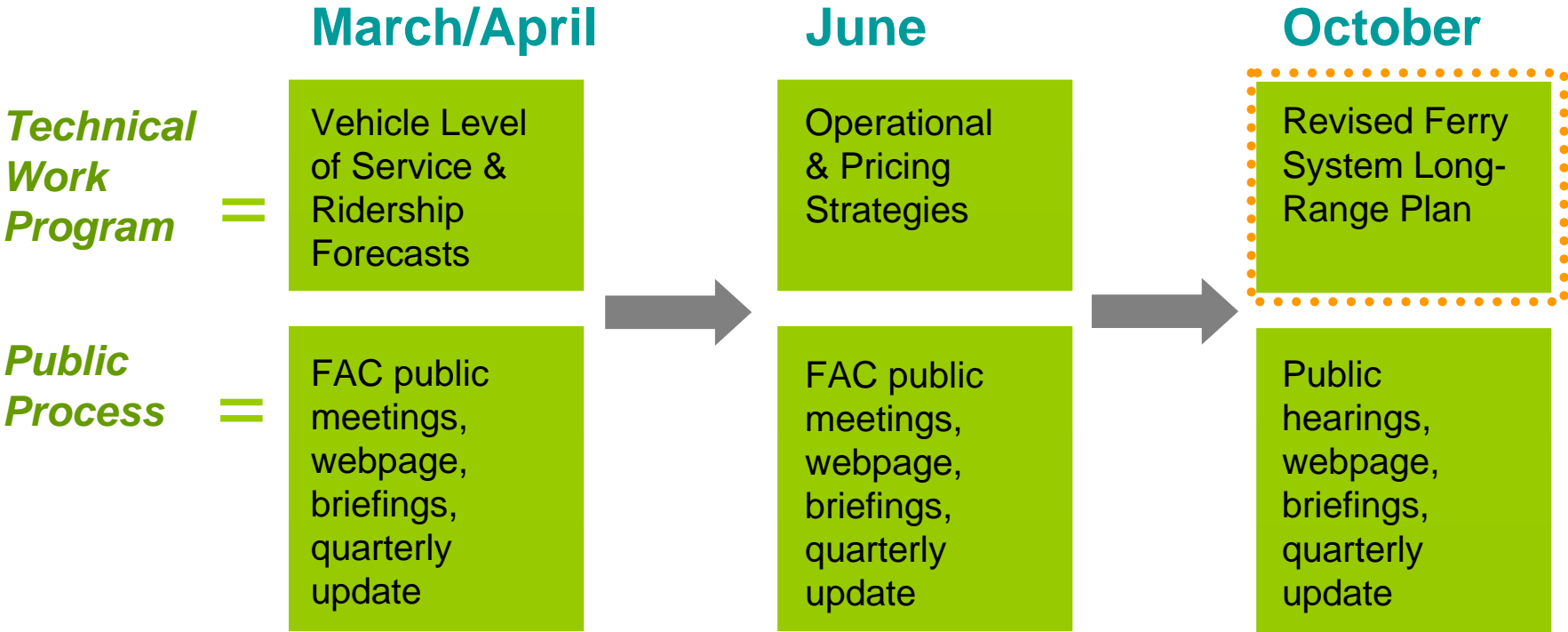
* WSDOT Innovative Partnership Program

Why does this work matter?

- The ferry system needs a mechanism to determine when it is appropriate to add capacity (system-sizing)
- System-sizing determines what is the appropriate fleet size (# of vessels) and composition (type & size of vessels)
- Future fleet determines the needs for terminal improvements

What is the work plan?

The work culminates in a revised long-range plan for the ferry system.



Vehicle LOS: What is it?

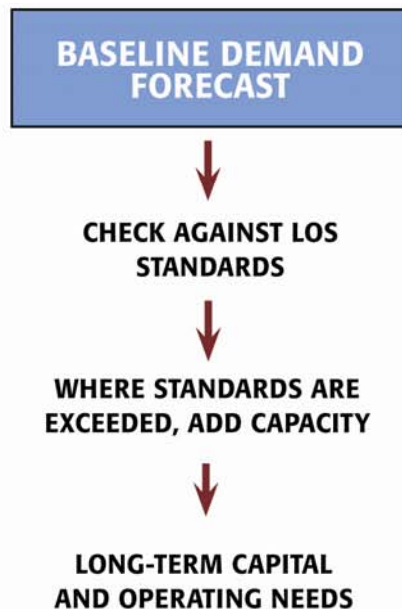
Vehicle Level-of-Service (LOS) is a way to measure congestion. The ferry system uses an average day to set this standard. When the system surpasses the standard, specific actions are outlined to reduce congestion – or waiting time for a ferry.

- Illustration – traffic signal analogy
- Current standards based on number of boats missed
- Standards for passengers and HOVs differ

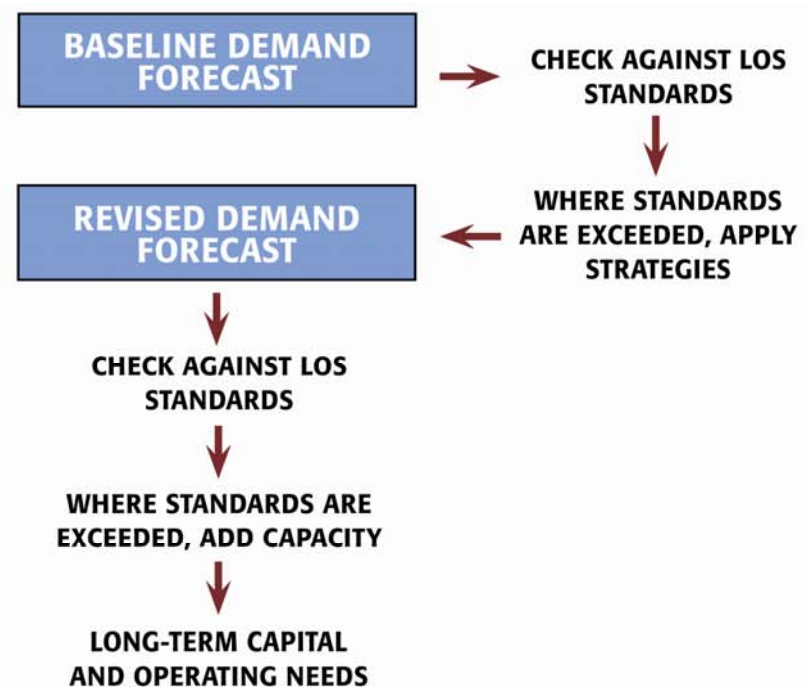
Vehicle LOS: Past and Proposed Approaches

Past LOS standards were based on congestion only.
The proposed approach bases LOS standards on congestion and service effectiveness

Current



Proposed



Next Steps

- Review public input
- Incorporate Washington State Transportation Commission survey results
- Using the new ridership forecast data, see where adopted LOS standards would be exceeded
- Look at operational and pricing strategies to help manage demand
- Share these strategies in June at FAC public meetings for review and comment

Questions?

For more information on
WSDOT Ferries Long Range Plan Work Program,
please contact

Marta Coursey
Director of Communications, WSDOT Ferries Division
(206) 515-3918 or coursem@wsdot.wa.gov

Visit: <http://www.wsdot.wa.gov/ferries/planning/ESHB2358.htm>