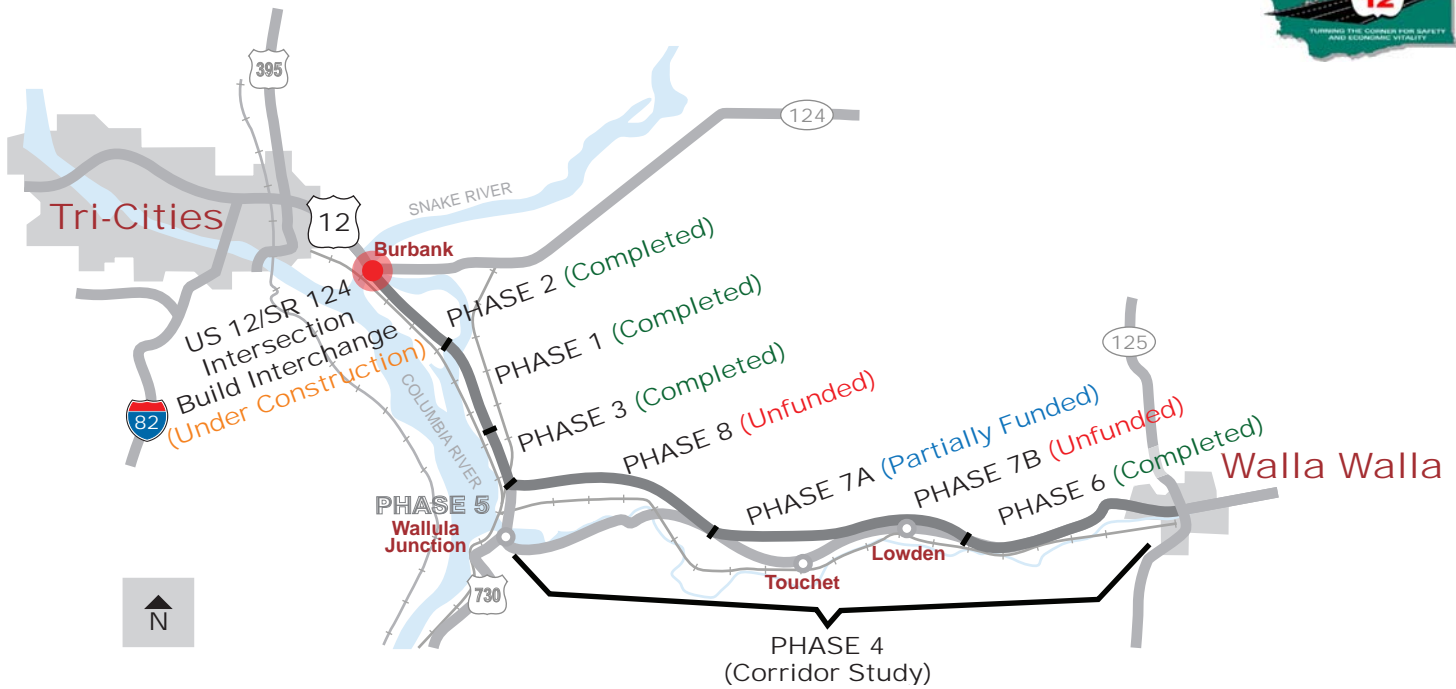




SR 124 Intersection

January 2012

Build Interchange near Burbank



Project Purpose

This project is part of a corridor plan to widen and improve US 12 from Burbank to the city of Walla Walla. This project will reduce collisions, decrease congestion, and enhance economic vitality.

Project Description

This project will construct a new interchange at the intersection of US 12 and SR 124, and a bridge for Humorist Road to cross over US 12.

Project Benefits

- **Safety.** Constructing a new interchange and overpass eliminates two traffic signals on this high speed highway, and eliminates collisions caused by red light running. Eliminating several private highway access points and separating high speed US 12 traffic from slower SR 124 traffic also reduces the risk of collisions.
- **Congestion Relief.** Congestion will be relieved by replacing traffic signals and separating cross traffic. The interchange will provide free-flowing movement between the two state highways.
- **Economic Vitality.** An interchange allows traffic to flow freely, reduces travel times, eliminates conflicts and reduces the risk of collisions. These benefits are appealing to business developers looking for locations with good highway access.
- **Environmental.** WSDOT is constructing an interchange configuration that will minimize environmental impacts while providing efficient traffic movement.



US 12/SR 124 Interchange

Construction Timeline

Construction started: Spring 2011
 Improvements open to traffic: Summer 2012

Project Cost Estimate

Total: \$22.1 million

Note: This estimate includes engineering, right of way, and construction costs.

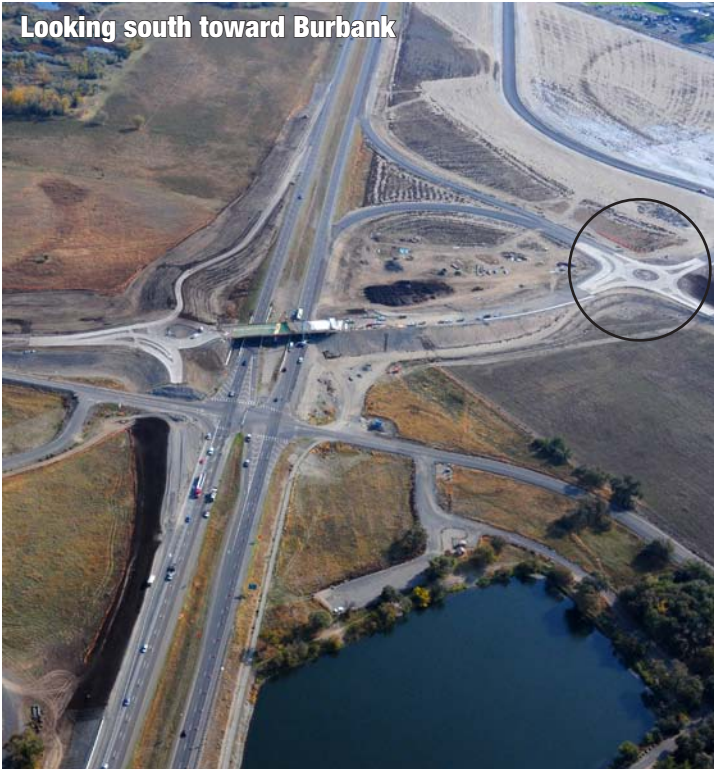
US 12/SR 124 Intersection - Build Interchange

Under Construction - Estimated Completion Summer 2012



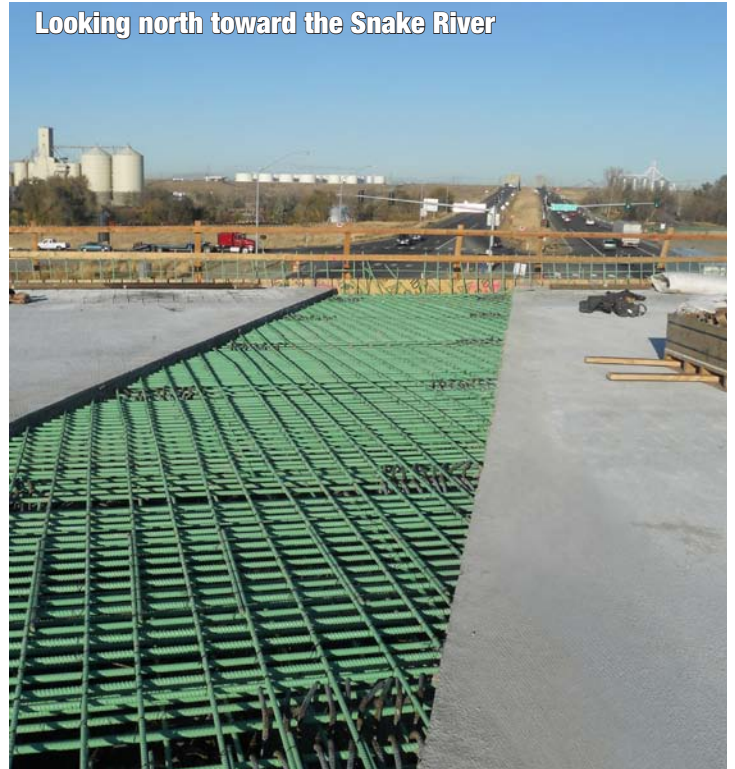
US 12/SR 124 Intersection – Build Interchange Construction Progress

Looking south toward Burbank

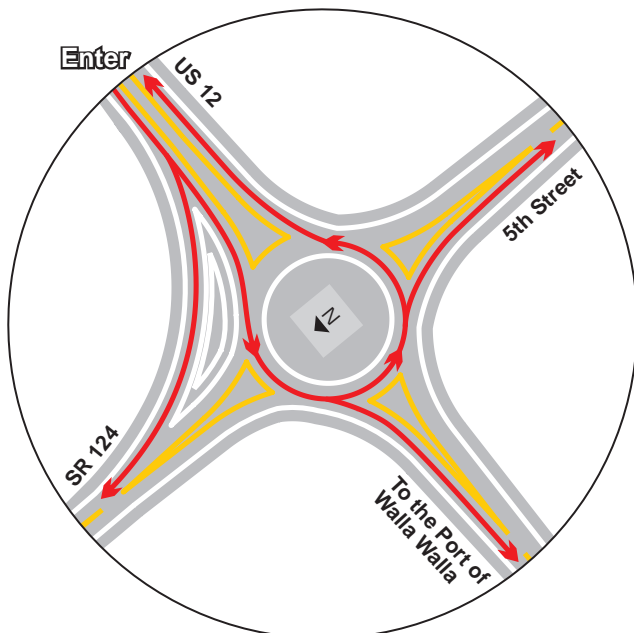


Construction underway for the new interchange at the intersection of US 12 and SR 124.
October 2011

Looking north toward the Snake River



Construction of the new bridge at the intersection of US 12 and SR 124.
November 2011



Navigating the Burbank roundabout after entering from the US 12 eastbound off-ramp. See map inside or photo above for location.



Pouring concrete for the new bridge crossing over US 12 at Humorist Road.
November 2011

For More Information

WSDOT – South Central Region

Moe Davari, Project Engineer

1655 Fowler Street

Richland, WA 99352

Phone – (509) 222-2402

E-mail – DavariM@wsdot.wa.gov

www.wsdot.wa.gov/projects/us12/sr124burbankinterchange/