

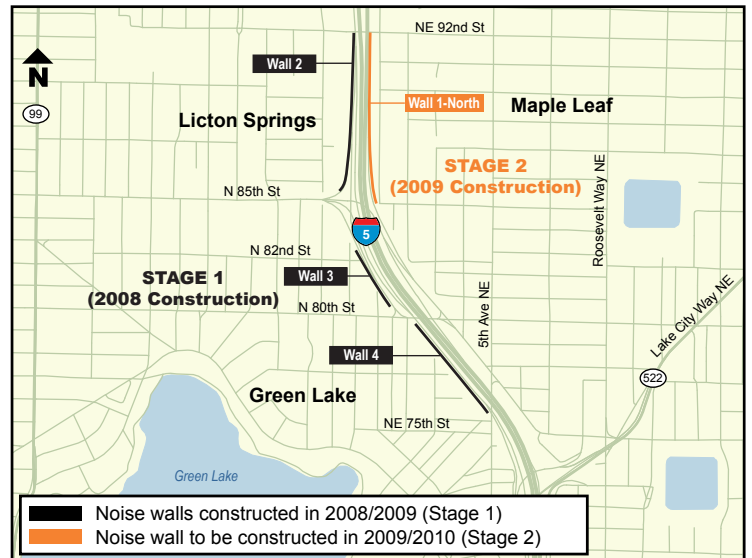


Spring 2009

Noise walls are coming to your neighborhood in fall 2009

Residents of the Maple Leaf neighborhood who live near I-5 currently experience high noise levels. When I-5 was built in the 1960s through this neighborhood, noise was less of a concern because there was less traffic.

The state Legislature provided funding through the 2005 Transportation Partnership Program to design and construct noise walls along I-5 between Fifth Avenue NE and NE 92nd Street to reduce freeway noise. We divided the project into two stages, as shown on the map. We recently completed the final design for Stage 2, and construction is scheduled to begin in fall 2009. We completed construction of the Stage 1 noise walls in April 2009.



Project map

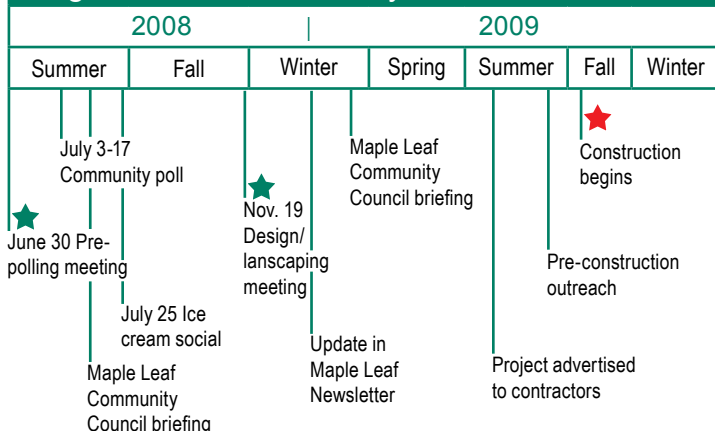
Community involvement helped define the project

Neighbors have been engaged in this project since 2006 through community briefings, open houses and local community council presentations.

Before moving forward with a noise wall in this area, we gauged support by conducting a community poll with eligible property owners in the Maple Leaf neighborhood in July 2008. We split the wall into two segments to best address

different community concerns: Wall 1-North (between NE 92nd Street and NE 85th Street) and Wall 1-South (between NE 85th Street and NE 80th Street). We conducted separate polls for each segment.

Stage 2 outreach summary and schedule



Stage 2 community poll results

	Wall 1-North	Wall 1-South
Participation of eligible property owners	62%	75%
Percentage in support*	88%	41%

*Results include a weighting factor for properties closest to I-5.

While we are moving forward with Wall 1-North, we decided to remove Wall 1-South from the project because of the limited support received from the community poll, along with other feedback we received from the community and stakeholders.

Benefits and design

Location: From NE 92nd Street to NE 85th Street (near the existing chainlink fence on First Avenue NE)

Current noise levels: 58-74 decibels (dBA)

Anticipated noise reduction: Up to 9 dBA for homes closest to I-5 (a 10 dBA reduction in noise sounds half as loud)

Material: Carsonite AcoustaShield (see story at right)

Height: 10 to 17 feet



Existing view at First Avenue NE looking north.



Design concept showing new noise wall along First Avenue NE looking north; typical representation of existing plants and new plants aged three to five years. Assumes ongoing maintenance by the community.

Working with Sound Transit

Sound Transit is planning to build a light rail line from the University of Washington to Northgate. The alignment for the light rail line is in the same vicinity as Wall 1-North on the east side of I-5. We have been following Sound Transit's plans in the area since we received funding for this project in 2005. With community support in early 2007, we decided to put the Stage 2 project on hold pending Sound Transit's ballot measure to fund the North Link light rail project. When the ballot measure failed in November 2007, we moved forward with the Stage 2 project.

In November 2008, voters approved the Sound Transit 2 Mass Transit Expansion plan which included funding to extend light rail to Lynnwood. In consideration of the light rail line, we designed this noise wall using a non-concrete product that can be taken down and reused when light rail is constructed in this area. We will continue to coordinate with Sound Transit as the noise wall project moves into construction.

Non-concrete product being used for noise wall

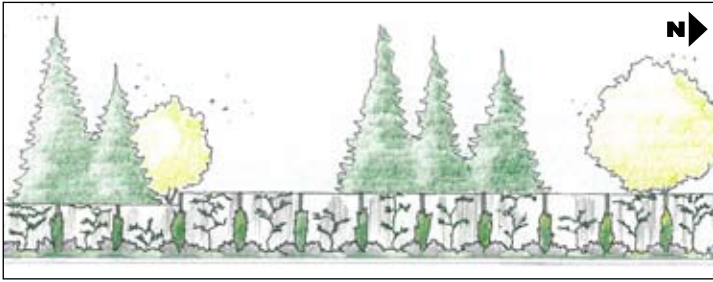
We will build Wall 1-North using a non-concrete product called Carsonite AcoustaShield rather than typical concrete. Carsonite AcoustaShield is a sound barrier system that consists of interlocking fiberglass composite planks filled with recycled tire rubber.

After evaluating different noise wall products, we selected the Carsonite product because we'll be able to disassemble it and potentially reuse it to accommodate Sound Transit's light rail project which is planned for the same location in the future. Also, it is lightweight and has a small footprint, leading to less construction impacts than traditional materials. We evaluated the results of the laboratory tests to confirm that the noise reducing capabilities of Carsonite are similar to a traditional concrete wall. Since this is the first time WSDOT has used this product, we will conduct monitoring once the new wall is constructed to confirm the material's performance and durability in the field.



Side view of Carsonite AcoustaShield; left example filled with tire rubber.

Landscaping planned for new noise wall



Rendering of existing landscaping and new landscaping aged three to five years.

As part of the project, crews will plant new landscaping, weed, water and replace any failing plants on the neighborhood side of the noise wall for three years to help establish new plants. After three years, continued care of the landscaping will require community effort to ensure ongoing success.

WSDOT's goal is to keep as many trees and plants currently near the wall location as possible. We will provide landscaping on the highway side of the noise wall to replace trees and plants that are removed during construction.

Plant types

The community selected the vines and small-to-medium shrubs shown below for landscaping on the neighborhood side of Wall 1-North.



Boston Ivy



Salal



Sky Pencil Holly

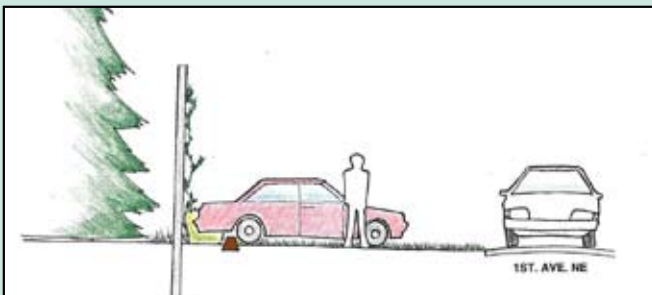


Gulf Stream Nandina

Parking configuration changes

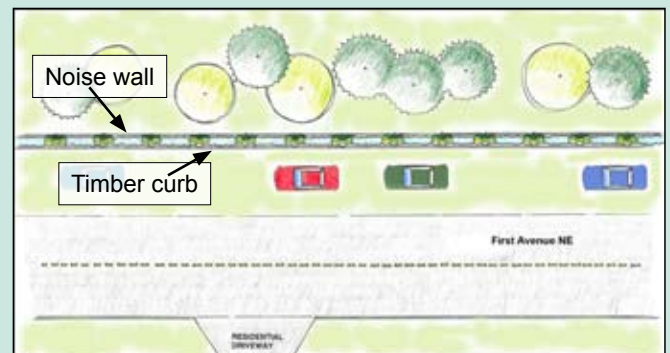
We are working with the Seattle Department of Transportation to modify parking along the west side of First Avenue NE from the unsigned existing configuration to a signed parallel parking configuration. The new configuration would be implemented after the noise wall is constructed. By requiring parallel parking, we are able to better protect the new noise wall and landscaping from damage by cars parked in this area.

Existing perpendicular parking configuration



A perpendicular parking configuration like what exists today could result in damage to the landscaping or noise wall.

Parallel parking configuration



A parallel parking configuration will protect landscaping and the noise wall.

Contact us

Visit: [www.wsdot.wa.gov/Projects/
I5/5thAveNEtoNE92ndNoiseWall](http://www.wsdot.wa.gov/Projects/I5/5thAveNEtoNE92ndNoiseWall)

E-mail: NWNoiseWalls@wsdot.wa.gov

Call: 206-770-3636



Noise walls are coming to your neighborhood in 2009

We will be in touch

We will continue to keep you informed as the construction stage of this project approaches by:

- Providing schedule information prior to the start of construction.
- Distributing fliers regarding construction work that may affect the neighbors.
- Providing briefings to the Maple Leaf Community Council.
- Maintaining the project Web site with updates and announcements.
- Sending regular e-mail updates. If you would like join our e-mail list, please send us an e-mail to the address above.



Americans with Disabilities Act (ADA) Information: Materials can be provided in alternative formats: large print, Braille, cassette tape, or on computer disk for people with disabilities by calling the Office of Equal Opportunity (OEO) at 360-705-7097. Persons who are deaf or hard of hearing may contact OEO through the Washington Relay Service at 7-1-1.

Title VI Statement to Public: WSDOT ensures full compliance with Title VI of the Civil Rights Act of 1964 by prohibiting discrimination against any person on the basis of race, color, national origin or sex in the provision of benefits and services resulting from its federally assisted programs and activities. For questions regarding WSDOT's Title VI Program, you may contact the Department's Title VI Coordinator at 360-705-7098.