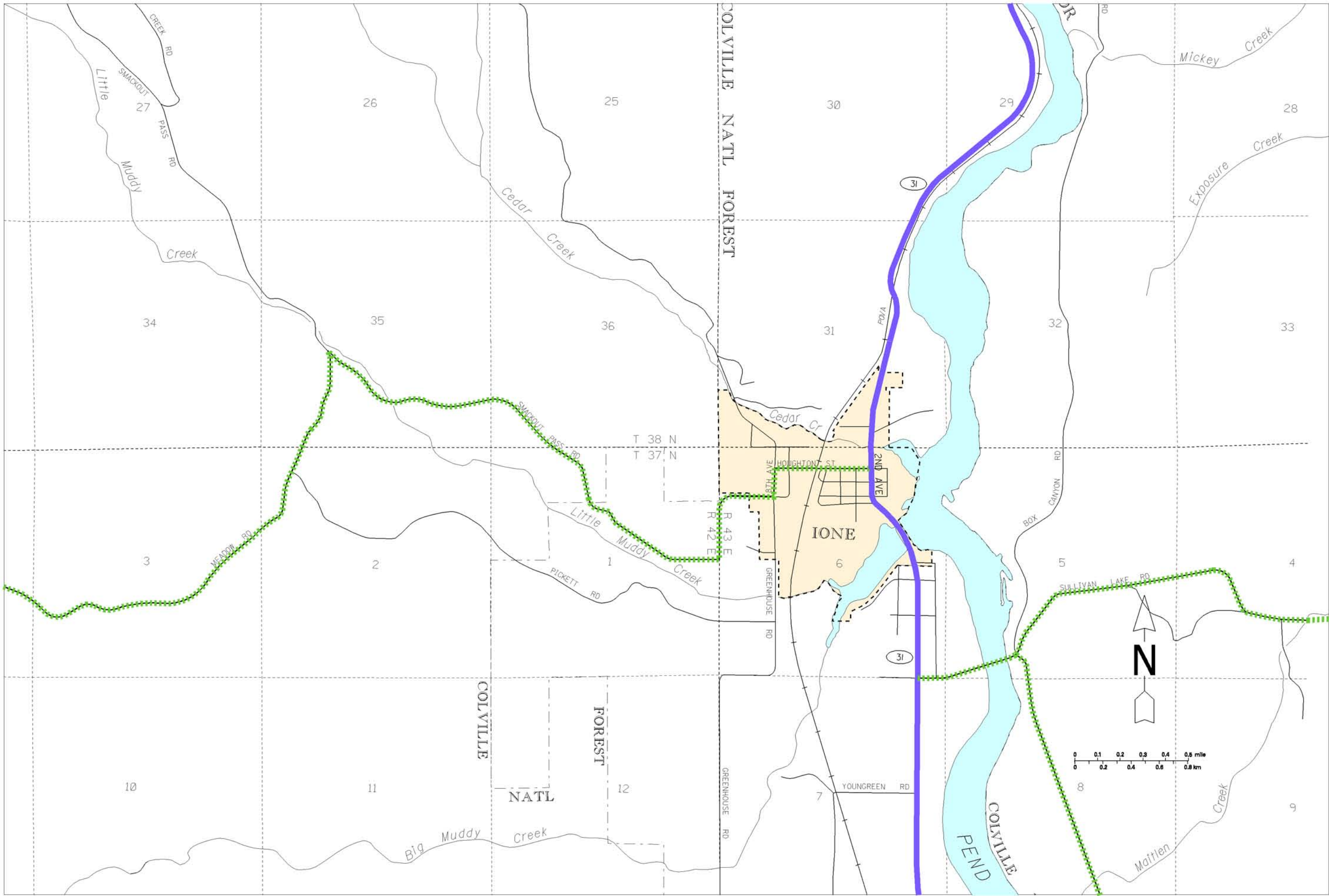


PLOT DATE: 30-NOV-2007



**Freight and Goods Transportation System**

**Roadways 2007**

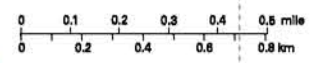
WASHINGTON STATE DEPARTMENT OF TRANSPORTATION

**TONNAGE CLASS T1 - T5 ANNUAL TONS (in thousands)**

- T1 (over 10,000)
- T2 (4,000 to 10,000)
- T3 (300 to 4,000)
- T4 (100 to 300)
- T5 (over 20 in 60 days)

No Seasonal Weight Restrictions

Seasonal Weight Restrictions



**IONE**

PEND OREILLE COUNTY