

MONTHLY PROJECT OVERVIEW

I-405 South Bellevue Widening Project

October 2007

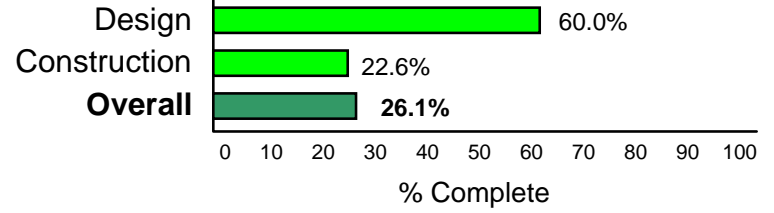
Project Location: I-405, 112th Ave SE to SE 8th St
Design-Builder: Atkinson

PIN: 840541F, 840509A, 840541G
WIN: U40541F

Design / Build Contract Summary

Contract Award: February 16, 2007
 Notice to Proceed: March 15, 2007
 Original Contract Time: 934 Calendar Days
 Original Substantial Completion: October 2009
 Original Contract Amount: \$124,000,000
 Revised Contract Amount: \$124,000,000

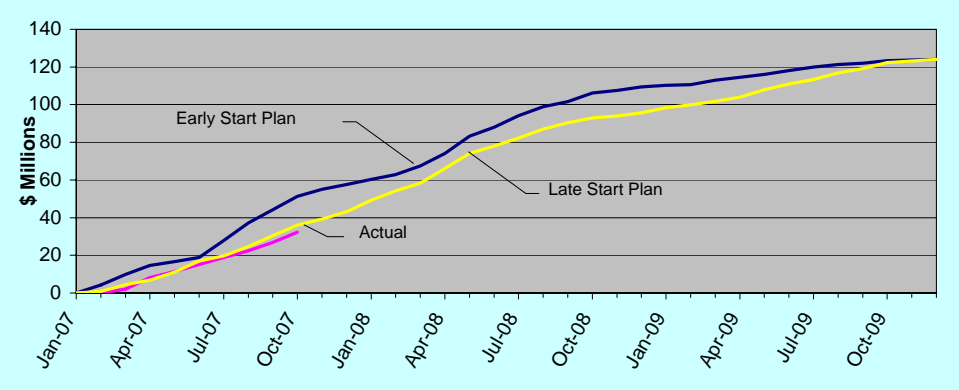
Project Progress to Date



Project Status as of: **October 31, 2007**

Contract Days Elapsed: 230 of 934 = 24.6%
 Contract Amount Earned to Date: \$32,322,500 = 26.1%
 Contract Amount Earned This Period: \$5,404,450 = 4.4%
 Current Projected Completion Date: Oct. 2009 (on schedule)

Project Cash Flow



October 2007 Highlights



Crews drive piles near Coal Creek Parkway



Crews pour concrete for a retaining wall near Coal Creek Parkway



Crews build columns for the new southbound bridge over I-90



Crews amend soils at the Kelsey Creek wetland mitigation site

Design-Build Schedule Summary

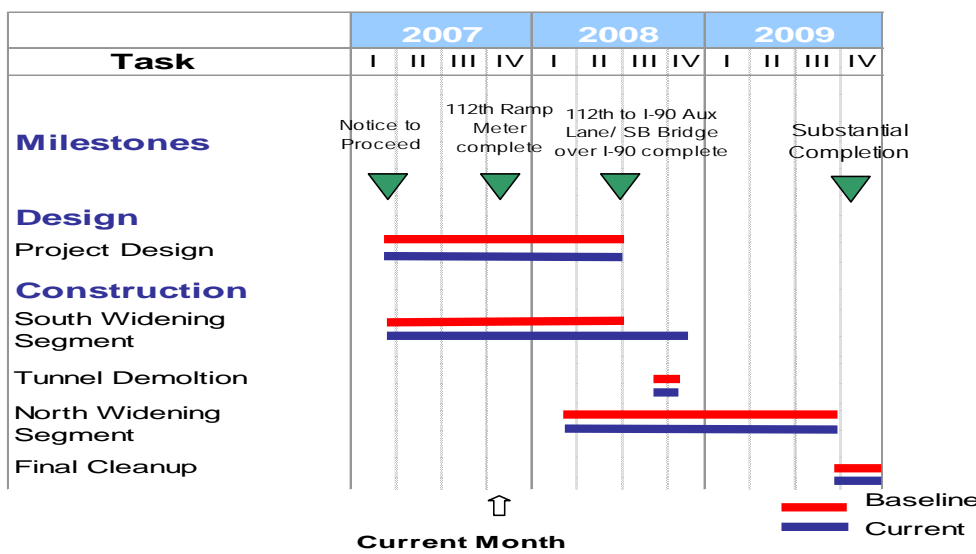
Design: The team has focused on finalizing RFC plans for work occurring in the I-90 Interchange Area and preliminary design for work in the Stage 2 Area (I-90 to SE 8th Street).

Construction: Completed shafts for piers 2, 3, and 4 for the new SB Bridge over I-90; Kelsey Creek Wetland Mitigation site grading and soil amendment; and concrete panel replacement. Started installing soldier piles for construction of retaining walls between 112th Ave SE and Coal Creek Pkwy on NB I-405. Installed piles to support Coal Creek Parkway bridge widening. Construction of stormwater treatment and monitoring facility at Coal Creek Pkwy has been delayed until Spring 2008.

Quality Control / Quality Assurance

Since construction activities have increased, Atkinson added additional QA staff to monitor the work. Atkinson is performing inspection and material testing for this project. To date, Atkinson's QA staff has generated 50 non-conformance reports (NCRs) for work done, 40 of these report items have been addressed, corrected and closed. WSDOT has audited 335 construction items and 184 design items, these audits generated 99 nonconforming issues. Atkinson has taken corrective action to close 92 of these items.

Summary Project Schedule



Risks / Challenges / Issues

Scheduling and sequencing of construction to minimize impacts to the public. Planning winter construction to comply with permit requirements and continue to maintain construction schedule.

Public Information & Community Outreach

Informing the public and businesses of upcoming construction & lane closures.

Upcoming Activities -November 2007

Construct walls along NB I-405 between 112th Ave SE and Coal Cr. Pkwy. Construct Coal Creek Bridge footings and piers. Plant Kelsey Creek mitigation site. Repair pavement within project limits. Drill shafts for SB Bridge over I-90 (Piers 5 & 6).

For more information, Call 425.401.4143 or 425.450.2561 or visit www.wsdot.wa.gov/Projects/i405/112thAvetoSE8th/

IT'S YOUR NICKEL. WATCH IT WORK.

"Washington's Future Just Got Better"
MAKING EVERY DOLLAR COUNT.

Washington State Department of Transportation