



Sheraton Tacoma

H O T E L

1320 Broadway Plaza • Tacoma, WA 98402
Telephone: 253/572-3200 • Fax: 253/627-3167

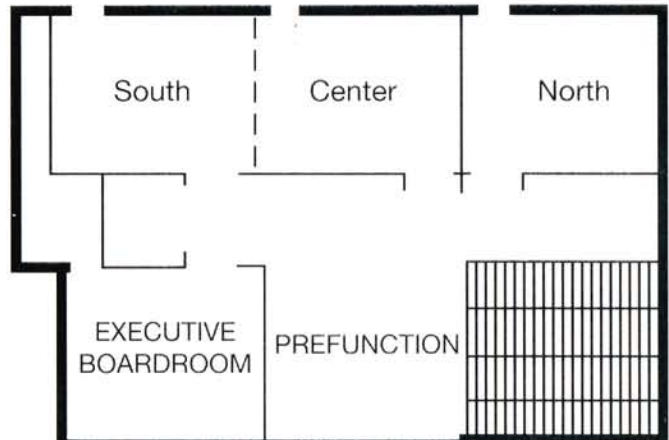
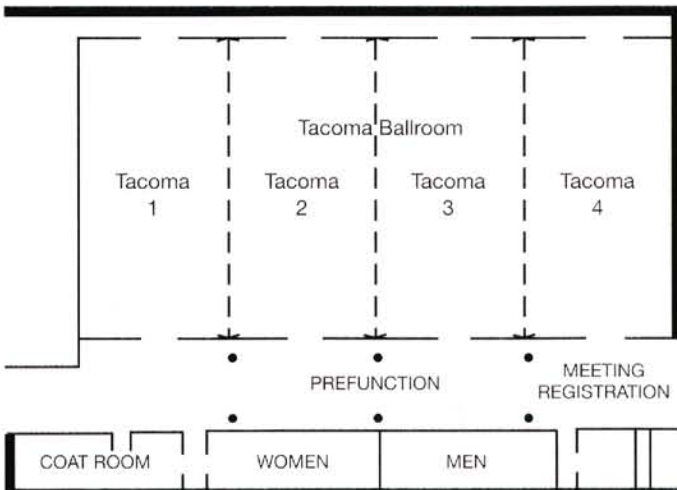
Number of Sleeping Rooms: 319
 Number of Suites: 10
 Number of Meeting Rooms: 18

- 125 Double/Doubles
- 11 Handicapped Rooms
- 18 Meeting Rooms
- Broadway Grill Seats 144
- Altezzo Ristorante on 26th Floor, Seats 125
- Starbucks Espresso in Lobby
- Vertigo Lounge on 26th Floor
- Wireless Internet Service
- Parking Lot Capacity for 366 Cars, Additional Parking Available in Adjacent Garages
- Gift Shop & Beauty Salon
- Exercise Facility on-site
- 24-hour Automated Business Center



Function & Capacity

Area	Size	Sq. Ft.	Function & Capacity				
			Banquet	Reception	Classroom	Theater	U-Shape
Tacoma Ballroom	53' x 108'	5,725	400	715	324	650	111
Each Equal Section 1, 2, 3, 4	53' x 27'	1,431	80	175	70	150	45
Conference Room South, Center	20'8" x 54'	1,116	80	125	50	100	42
Equal Section South, Center	20'8" x 27'	558	40	50	24	50	20
Conference Room North	20'8" x 26'	537	40	50	24	50	20
Executive Boardroom	25'6" x 23'	586	40	50	30	50	20
510	16' x 26'	416	20	30	15	30	15
514	16' x 26'	416	20	30	15	30	15



Bicentennial Pavilion

1320 Broadway Plaza • Tacoma, WA 98402 • Telephone: 253/572-3200

Number of meeting rooms: 7

Meeting Room	Size	Sq. Ft.	Function & Capacity				
			Banquet	Classroom	Theater	U-Shape	8x10 Booths
A	64' x 48'	3,072	250	150	350	60	20
B	24' x 42'	1,008	60	40	95	30	-
C	39' x 34'	1,326	80	60	100	36	-
D	64' x 48'	3,027	250	150	250	60	20
E	38' x 24'	912	50	35	75	24	-
F	39' x 31'	1,209	80	60	100	36	-
A G D	113' x 64'	7,232	500	500	800	n/a	50
Main Hall	127' x 113'	14,351	980	1,000	1,800	n/a	98
Rotunda	32' x 28'	896	80	-	-	-	-
Economic Development Boardroom	33' x 16'	528	40	30	50	25	-

