

CHECK REQUIRED SPECIFICATION

STANDARD
WSDOT / STATE CONTRACT NUMBER _____
SLIPNOT
GALVANIZED DIAMOND PLATE
BLACK

LID ASSEMBLY DRAWING: 700-00133 (DP); 700-00134 (SN)
 FRAME ASSEMBLY DRAWING: 700-00004 (DP); 700-00034 (SN)

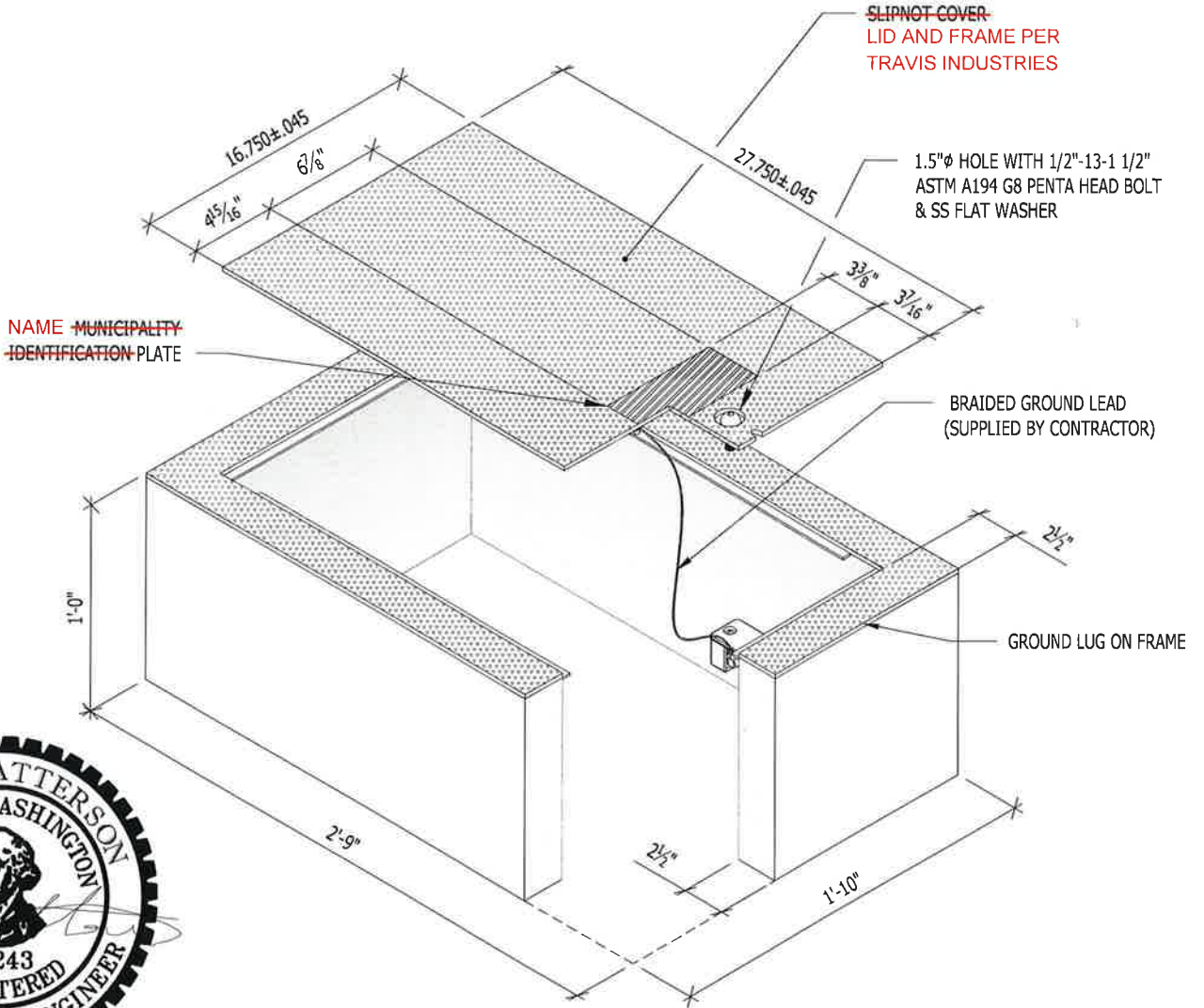
GENERAL NOTES:

LID TO BE PER TRAVIS INDUSTRIES PRODUCT, PART NUMBERS:
 716-WSDPT202 - DIAMOND PLATE
 716S0029 (SN) - SLIPNOT
 FRAME PART #:
 716-WSDOT201 - DIAMOND PLATE
 716S0030 - SLIPNOT

CONCRETE WITH FIBERMESH REINFORCING
 f_c @ 28 DAYS = 4000 PSI

LID & FRAME SHALL BE HOTDIP GALVANIZED PER 9-29.2(1)A

NOTE: GALVANIZING ONLY REQUIRED FOR SLIPNOT LID AND FRAME; GALVANIZING DIAMOND PLATE IS OPTIONAL.



GENERAL NOTES:

THIS ASSEMBLY IS CONSTRUCTED AND TESTED TO CONFORM WITH WSDOT STANDARD SPECIFICATION 9-29.2(2), STANDARD DUTY JUNCTION BOXES 9-29.2(1)

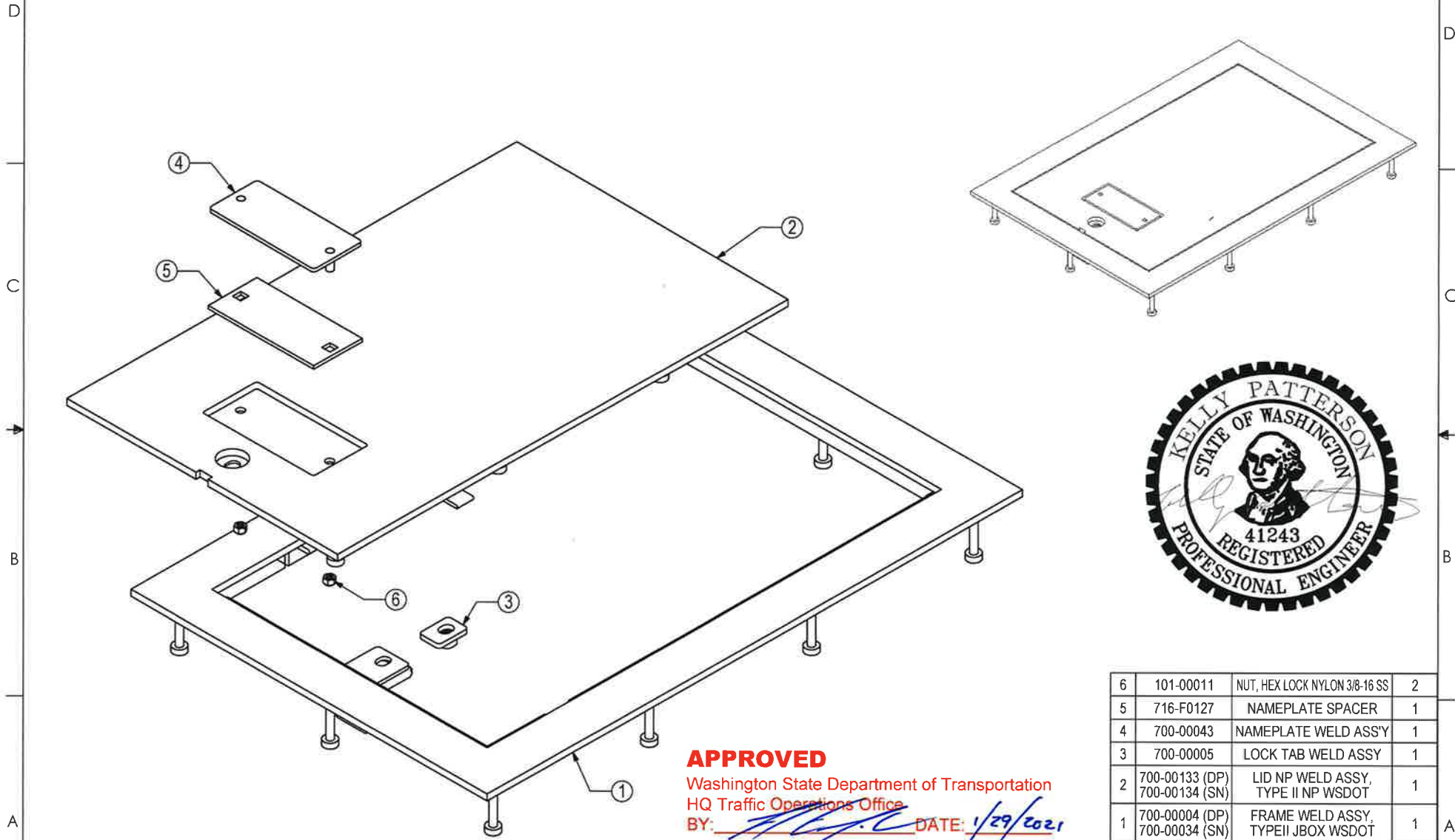
APPROVED AS NOTED

Washington State Department of Transportation
 HQ Traffic Operations Office

BY: *[Signature]* DATE: 1/29/2021

THE INFORMATION CONTAINED IN THIS DRAWING IS THE SOLE PROPERTY OF TRAVIS INDUSTRIES INC. ANY REPRODUCTION IN PART OR WHOLE WITHOUT THE WRITTEN PERMISSION OF TRAVIS INDUSTRIES INC. IS PROHIBITED.

REV	DESCRIPTION	DATE	INITIALS
NP	TYPE II w/ NAMEPLATE	2/20/20	DK



APPROVED

Washington State Department of Transportation
 HQ Traffic Operations Office

BY: *[Signature]* DATE: 1/29/2021



6	101-00011	NUT, HEX LOCK NYLON 3/8-16 SS	2
5	716-F0127	NAMEPLATE SPACER	1
4	700-00043	NAMEPLATE WELD ASS'Y	1
3	700-00005	LOCK TAB WELD ASSY	1
2	700-00133 (DP) 700-00134 (SN)	LID NP WELD ASSY, TYPE II NP WSDOT	1
1	700-00004 (DP) 700-00034 (SN)	FRAME WELD ASSY, TYPE II JBOX WSDOT	1
#	SKU#	DESCRIPTION	QTY

Manufactured by Travis Ind.

TYPE II NAMEPLATE JBOX WSDOT

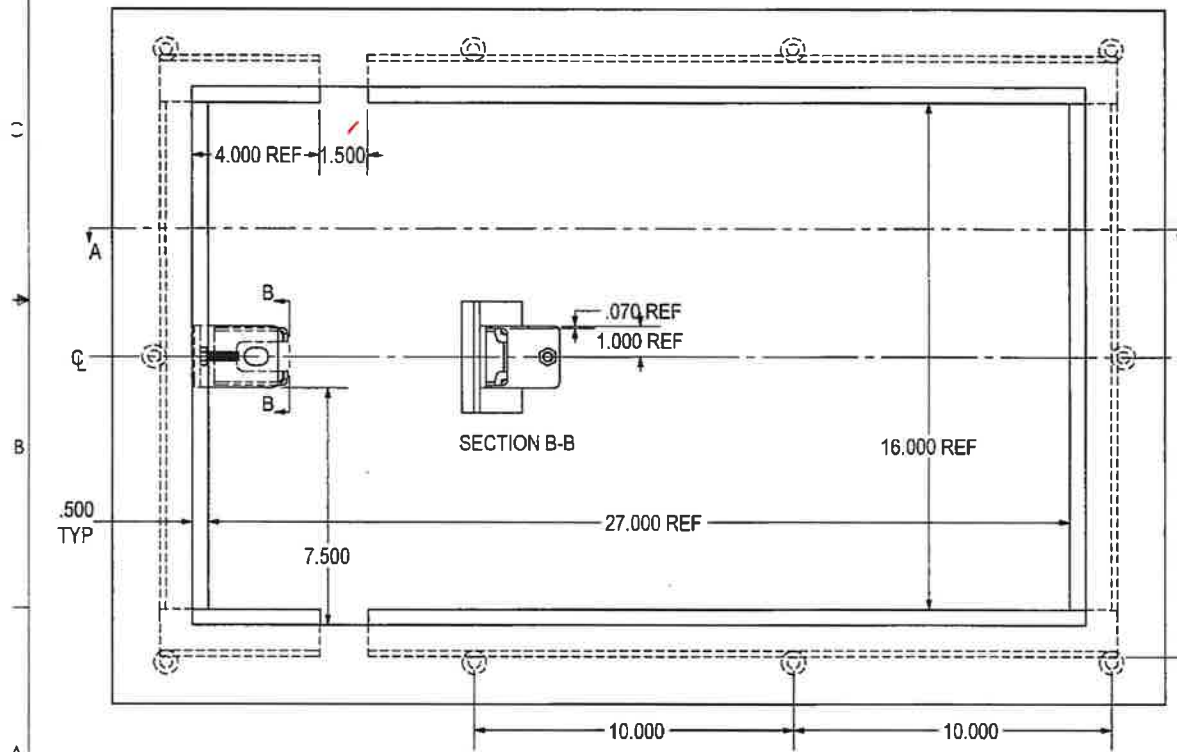
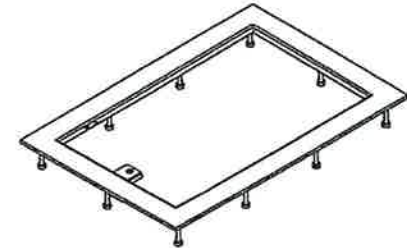
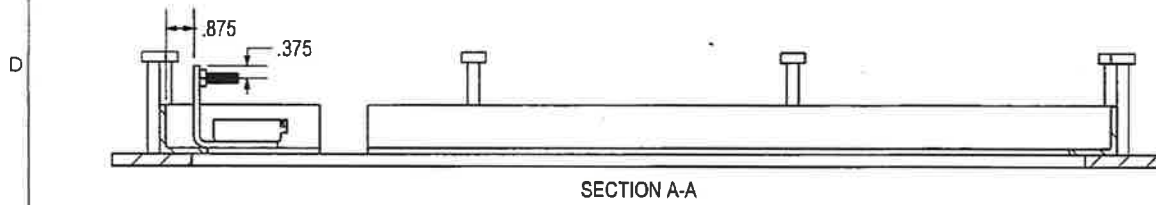
UNIVERSAL DRAWING:
 716-00060 WSDOT NP (DP)
 716-00061 WSDOT NP (SN)

HOLES ± 0.030 X.XXX ± 0.060 ANGLES ± 1.0°	SIZE A	DRAWN BY: DREW KEIM	SKU NUMBER: DATE CREATED: 2/20/20	REV. NP
SCALE: NONE	CAD	FILE: TYPE II NP WSDOT	SHEET	1 of 1

THE INFORMATION CONTAINED IN THIS DRAWING IS THE SOLE PROPERTY OF H² PRECAST INC. ANY REPRODUCTION IN PART OR WHOLE WITHOUT THE WRITTEN PERMISSION OF FM&M IS PROHIBITED.

This assembly is constructed and tested to conform with WSDOT Standard Specification 9-29.2(1) Standard Duty Junction Boxes 9-29.2(1)

REV	DESCRIPTION	DATE	INITIALS
A	MODIFIED LATCH GUIDE & WELDING.	1/14	DK



APPROVED AS NOTED
 Washington State Department of Transportation
 HQ Traffic Operations Office
 BY: *[Signature]* DATE: 1/29/2021

700-00004 WSDOT (DP)
 700-00034 WSDOT (SN)

Prepared for H ² PRECAST INC.			
FRAME WELD ASSY, TYPE I JBOX WSDOT			
SIZE A	DRAWN BY: DREW KEW	PROGRAM NUMBER: DATE CREATED: 4/29/14	REV. A
SCALE: NONE	CAD FILE: FRAME (A). IZ WSDOT	SHEET 1 of 2	

THIS DRAWING CREATED FOR MANUFACTURING REFERENCE ONLY AND IS NOT INTENDED TO SUPERCEDE H² PRECAST INC. DRAWINGS OR SPECIFICATIONS OF THE REFERENCED PART.

HOLES ± 0.030
 X.XXX ± 0.060
 ANGLES ± 1.0°

A

B

C

D

A

B

C

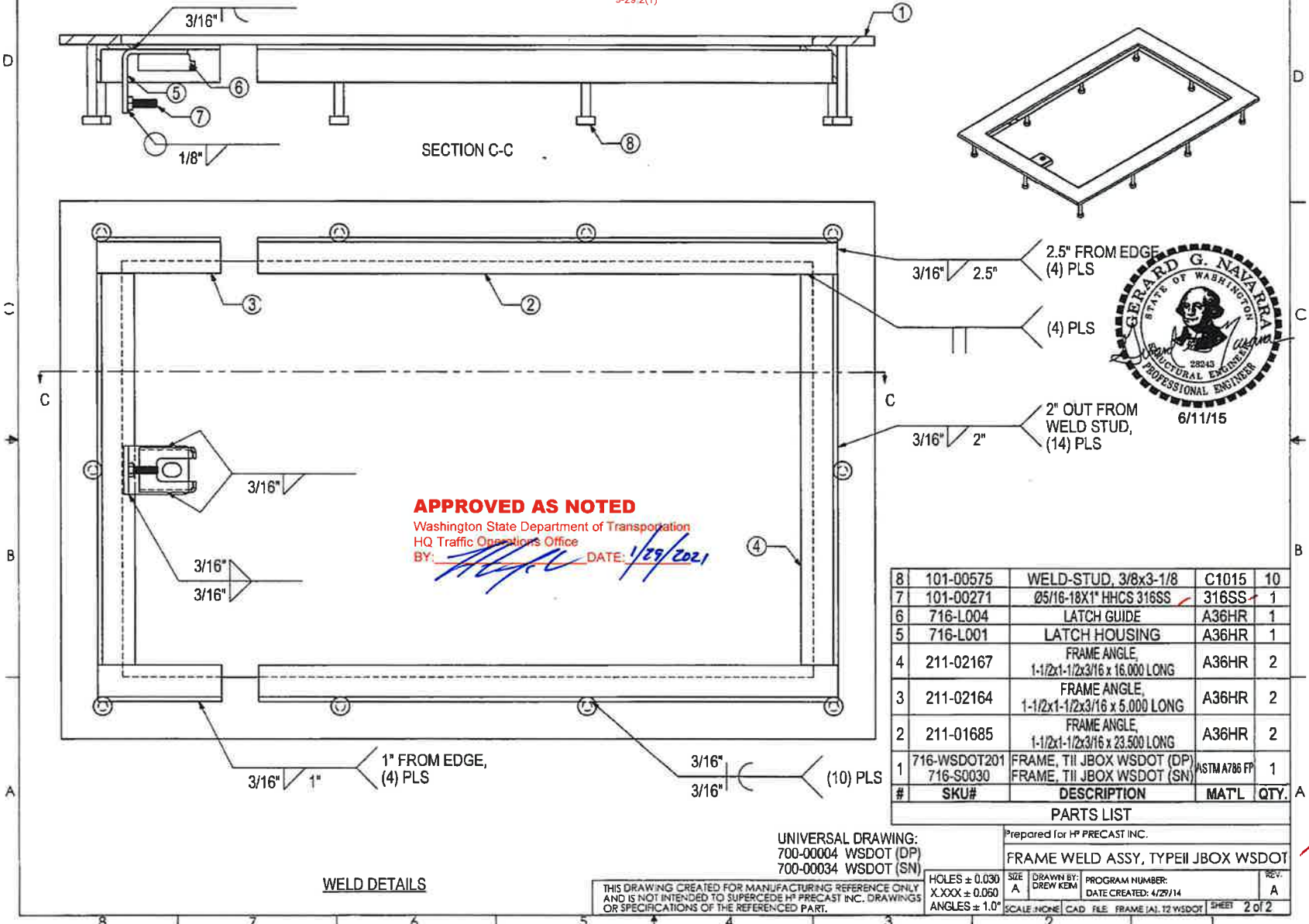
D

8 7 6 5 4 3 2 1

THE INFORMATION CONTAINED IN THIS DRAWING IS THE SOLE PROPERTY OF H² PRECAST INC. ANY REPRODUCTION IN PART OR WHOLE WITHOUT THE WRITTEN PERMISSION OF FM&M IS PROHIBITED.

This assembly is constructed and tested to conform with WSDOT Standard Specification 9-29.2(2), Standard Duty Junction Boxes.
9-29.2(1)

REV	DESCRIPTION	DATE	INITIALS
A	MODIFIED LATCH GUIDE & WELDING.	1/14	DK



APPROVED AS NOTED
 Washington State Department of Transportation
 HQ Traffic Operations Office
 BY: *[Signature]* DATE: 1/29/2021

8	101-00575	WELD-STUD, 3/8x3-1/8	C1015	10
7	101-00271	Ø5/16-18X1" HHCS 316SS	316SS	1
6	716-L004	LATCH GUIDE	A36HR	1
5	716-L001	LATCH HOUSING	A36HR	1
4	211-02167	FRAME ANGLE, 1-1/2x1-1/2x3/16 x 16.000 LONG	A36HR	2
3	211-02164	FRAME ANGLE, 1-1/2x1-1/2x3/16 x 23.500 LONG	A36HR	2
2	211-01685	FRAME ANGLE, 1-1/2x1-1/2x3/16 x 23.500 LONG	A36HR	2
1	716-WSDOT201	FRAME, TII JBOX WSDOT (DP)	ASTM A786 FP	1
	716-S0030	FRAME, TII JBOX WSDOT (SN)		
#	SKU#	DESCRIPTION	MAT'L	QTY.

PREPARED FOR H² PRECAST INC.
 FRAME WELD ASSY, TYPEII JBOX WSDOT

UNIVERSAL DRAWING:
 700-00004 WSDOT (DP)
 700-00034 WSDOT (SN)

THIS DRAWING CREATED FOR MANUFACTURING REFERENCE ONLY AND IS NOT INTENDED TO SUPERCEDE H² PRECAST INC. DRAWINGS OR SPECIFICATIONS OF THE REFERENCED PART.

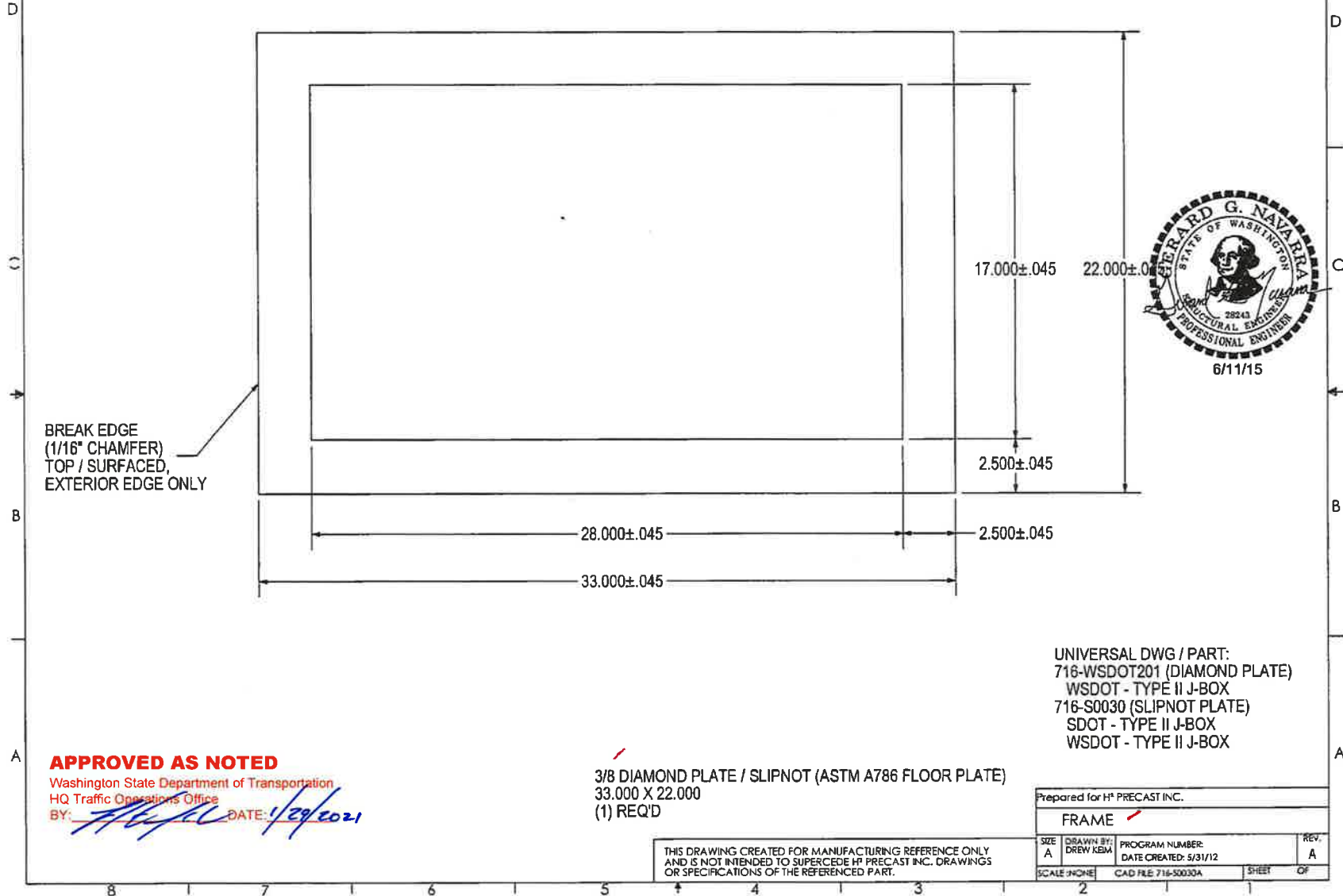
HOLES ± 0.030	SIZE A	DRAWN BY: DREW KEM	PROGRAM NUMBER:	REV. A
X.XXX ± 0.050			DATE CREATED: 4/27/14	
ANGLES ± 1.0°	SCALE: NONE	CAD FILE: FRAME.IAI.2.WSDOT	SHEET: 2 OF 2	

WELD DETAILS

THE INFORMATION CONTAINED IN THIS DRAWING IS THE SOLE PROPERTY OF H¹ PRECAST INC. ANY REPRODUCTION IN PART OR WHOLE WITHOUT THE WRITTEN PERMISSION OF FM&M IS PROHIBITED.

This assembly is constructed and tested to conform with WSDOT Standard Specification 9-29.2(2); Standard Duty Junction Boxes
9-29.2(1)

REV	DESCRIPTION	DATE	INITIALS
A	ADDED CHAMFER NOTE TO DRAWING	7/14	DK



APPROVED AS NOTED

Washington State Department of Transportation

HQ Traffic Operations Office

BY: *[Signature]* DATE: 1/29/2021

3/8 DIAMOND PLATE / SLIPNOT (ASTM A786 FLOOR PLATE)
33.000 X 22.000
(1) REQ'D

UNIVERSAL DWG / PART:
716-WSDOT201 (DIAMOND PLATE)
WSDOT - TYPE II J-BOX
716-S0030 (SLIPNOT PLATE)
SDOT - TYPE II J-BOX
WSDOT - TYPE II J-BOX

Prepared for H¹ PRECAST INC.

FRAME

SIZE	DRAWN BY:	PROGRAM NUMBER:	REV.
A	DREW KEM	DATE CREATED: 5/31/12	A
SCALE: NONE	CAD FILE: 716-S0030A	SHEET	OF

THIS DRAWING CREATED FOR MANUFACTURING REFERENCE ONLY AND IS NOT INTENDED TO SUPERCEDE H¹ PRECAST INC. DRAWINGS OR SPECIFICATIONS OF THE REFERENCED PART.

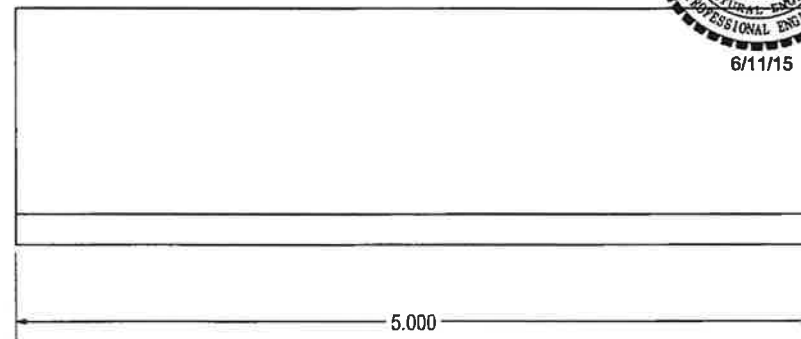
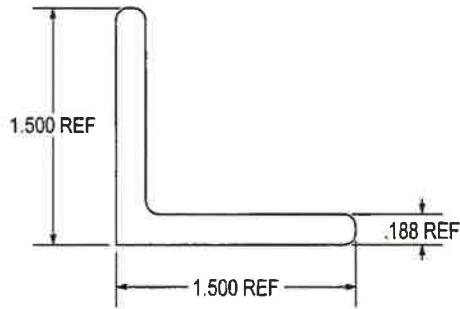
THE INFORMATION CONTAINED IN THIS DRAWING IS THE SOLE PROPERTY OF H² PRECAST INC. ANY REPRODUCTION IN PART OR WHOLE WITHOUT THE WRITTEN PERMISSION OF FM&M IS PROHIBITED.

This assembly is constructed and tested to conform with WSDOT Standard Specification 9-29.2(2) Standard Duty Junction Boxes
9-29.2(1)

REV	DESCRIPTION	DATE	INITIALS
A	3/16 THICKNESS WAS 1/4. UPDATED DESCRIPTION.	7/14	DK



6/11/15



APPROVED AS NOTED

Washington State Department of Transportation
HQ Traffic Operations Office

BY: *[Signature]* DATE: 1/29/2021

ANGLE, 1-1/2 x 1-1/2 x 3/16 X 5.000 LONG
(2) REQ'D

Prepared for H² PRECAST INC.

FRAME ANGLE.

1-1/2x1-1/2x3/16 x 5.000 LONG

THIS DRAWING CREATED FOR MANUFACTURING REFERENCE ONLY AND IS NOT INTENDED TO SUPERCEDE H² PRECAST INC. DRAWINGS OR SPECIFICATIONS OF THE REFERENCED PART.

HOLES ± 0.030
X.XXX ± 0.060
ANGLES ± 1.0°

SIZE A	DRAWN BY: DREW KEM	PROGRAM NUMBER DATE CREATED: 5/7/14	211-02164	REV. A
SCALE: NONE			CAD FILE: 716-R055A	SHEET 1 of 1

D
C
B
A

D
C
B
A

8 7 6 5 4 3 2 1

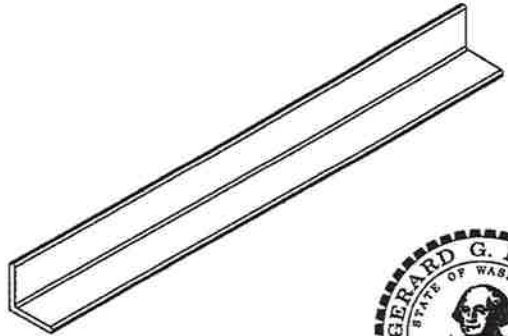
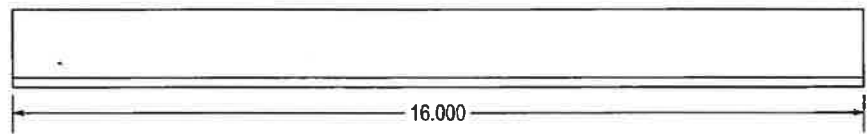
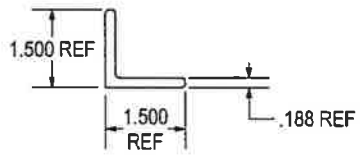
THE INFORMATION CONTAINED IN THIS DRAWING IS THE SOLE PROPERTY OF H²PRECAST INC. ANY REPRODUCTION IN PART OR WHOLE WITHOUT THE WRITTEN PERMISSION OF FM&M IS PROHIBITED.

This assembly is constructed and tested to conform with WSDOT Standard Specification 9-29.2(2); Standard Duty Junction Boxes
9-29.2(1)

REV	DESCRIPTION	DATE	INITIALS
A	3/16 THICKNESS WAS 1/4. UPDATED DESCRIPTION.	6/11/14	DK

D
C
B
A

D
C
B
A



APPROVED AS NOTED
Washington State Department of Transportation
HQ Traffic Operations Office
BY: *[Signature]* DATE: *1/29/2021*

ANGLE, 1-1/2 x 1-1/2 x 3/16 X 16.000 LONG
(2) REQ'D

THIS DRAWING CREATED FOR MANUFACTURING REFERENCE ONLY AND IS NOT INTENDED TO SUPERCEDE H²PRECAST INC. DRAWINGS OR SPECIFICATIONS OF THE REFERENCED PART.

HOLES ± 0.030 X.XXX ± 0.060	SIZE A	DRAWN BY DREW KEAM	PROGRAM NUMBER DATE CREATED: 5/7/14	211-02167	REV. A
ANGLES ± 1.0°	SCALE: NONE	CAD FILE: 716-F0057A	SHEET 1 of 1		

8 7 6 5 4 3 2 1

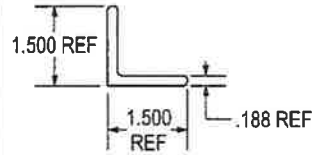
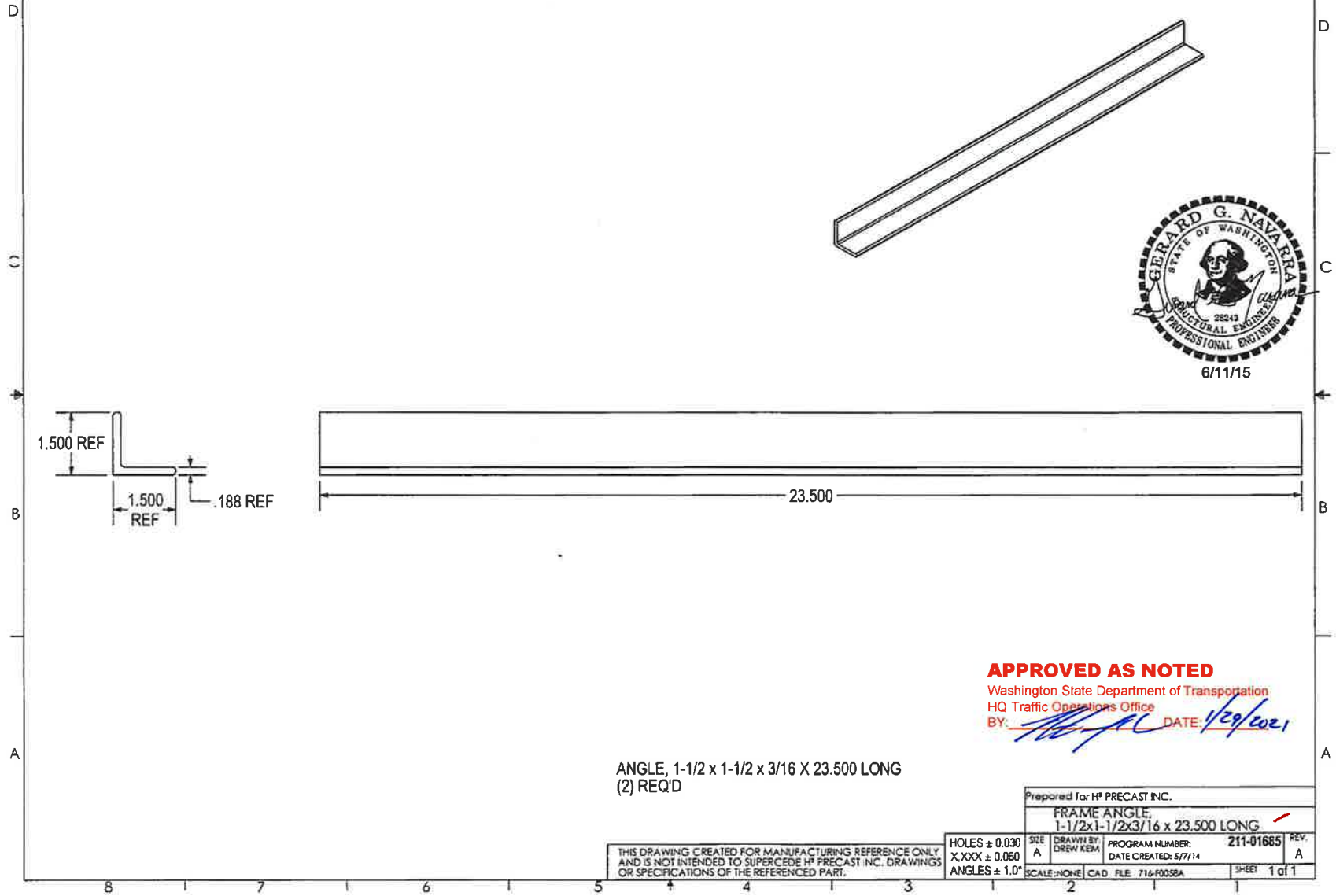
Prepared for H²PRECAST INC.

FRAME ANGLE,
1-1/2x1-1/2x3/16 x 16.000 LONG

THE INFORMATION CONTAINED IN THIS DRAWING IS THE SOLE PROPERTY OF HP PRECAST INC. ANY REPRODUCTION IN PART OR WHOLE WITHOUT THE WRITTEN PERMISSION OF FM&M IS PROHIBITED.

This assembly is constructed and tested to conform with WSDOT Standard Specification ~~9-29.2(2)~~; Standard Duty Junction Boxes 9-29.2(1)

REV	DESCRIPTION	DATE	INITIALS
A	3/16 THICKNESS WAS 1/4. UPDATED DESCRIPTION.	1/14	DK



APPROVED AS NOTED
 Washington State Department of Transportation
 HQ Traffic Operations Office
 BY: *[Signature]* DATE: 1/29/2021

ANGLE, 1-1/2 x 1-1/2 x 3/16 X 23.500 LONG
 (2) REQ'D

THIS DRAWING CREATED FOR MANUFACTURING REFERENCE ONLY AND IS NOT INTENDED TO SUPERCEDE HP PRECAST INC. DRAWINGS OR SPECIFICATIONS OF THE REFERENCED PART.

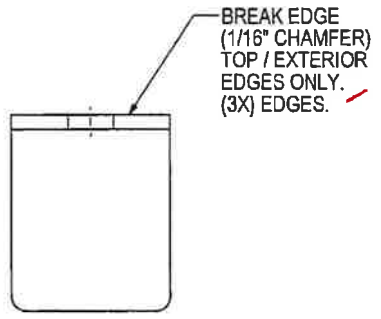
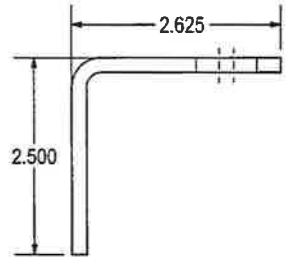
HOLES ± 0.030
 X,XXX ± 0.060
 ANGLES ± 1.0°

Prepared for HP PRECAST INC.			
FRAME ANGLE			
1-1/2x1-1/2x3/16 x 23,500 LONG			
SIZE A	DRAWN BY DREW KEW	PROGRAM NUMBER: DATE CREATED: 5/7/14	211-01685 REV. A
SCALE: NONE	CAD FILE: 716-F0058A	SHEET 1 of 1	

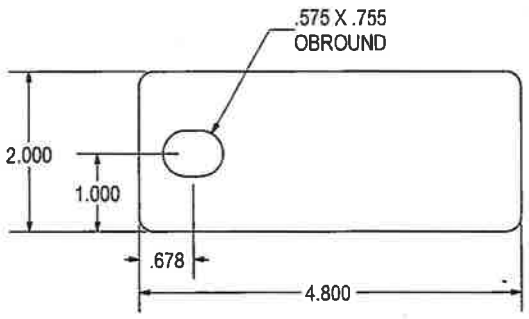
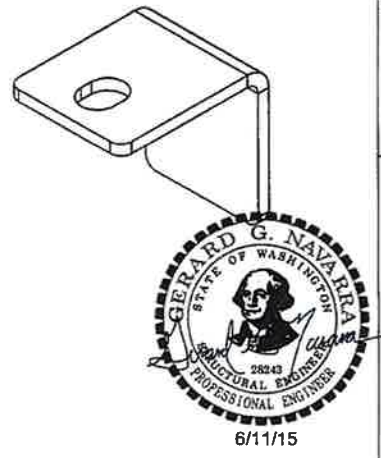
THE INFORMATION CONTAINED IN THIS DRAWING IS THE SOLE PROPERTY OF H² PRECAST INC. ANY REPRODUCTION IN PART OR WHOLE WITHOUT THE WRITTEN PERMISSION OF FM&M IS PROHIBITED.

This assembly is constructed and tested to conform with WSDOT Standard Specification 9-29.2(2)-Standard Duty Junction Boxes
9-29.2(1)

REV	DESCRIPTION	DATE	INITIALS
A	ADDED CHAMFER NOTE	7/14	DK



FORMED DETAILS



FLAT PATTERN

APPROVED AS NOTED
Washington State Department of Transportation
HQ Traffic Operations Office
BY: *[Signature]* DATE: *7/29/2021*

3/16HR - 4.800 X 2.000
X = .325 @ 90° .188 R
(1) REQ'D

THIS DRAWING CREATED FOR MANUFACTURING REFERENCE ONLY AND IS NOT INTENDED TO SUPERCEDE H² PRECAST INC. DRAWINGS OR SPECIFICATIONS OF THE REFERENCED PART.

HOLES ± 0.030	SIZE A	DRAWN BY: DREW KBM	PROGRAM NUMBER: 716-L001	REV. A
X.XXX ± 0.060		DATE CREATED: 5/21/12		
ANGLES ± 1.0°	SCALE: NONE	CAD FILE: 716-L001A	SHEET 1 of 1	

C
C
B
A

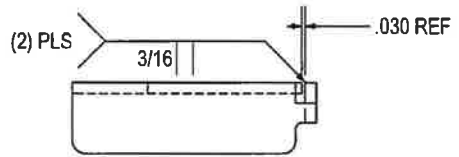
D
C
B
A

8 1 7 1 6 1 5 4 3 2 1

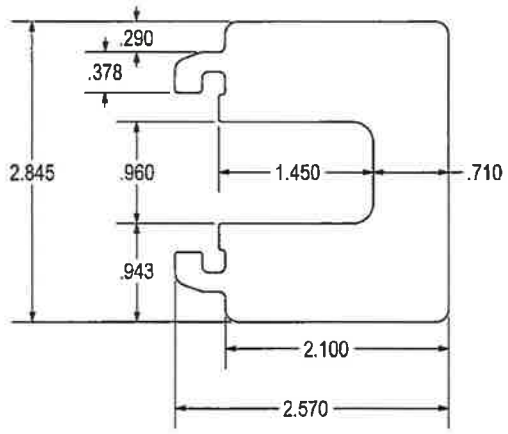
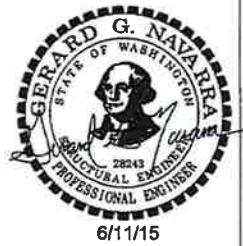
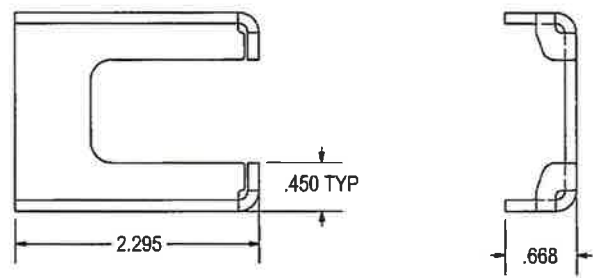
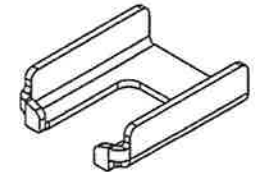
THE INFORMATION CONTAINED IN THIS DRAWING IS THE SOLE PROPERTY OF H² PRECAST INC. ANY REPRODUCTION IN PART OR WHOLE WITHOUT THE WRITTEN PERMISSION OF FM&M IS PROHIBITED.

This assembly is constructed and tested to conform with WSDOT Standard Specification 9-29.2(2) Standard Duty Junction Boxes.
9-29.2(1)

REV	DESCRIPTION	DATE	INITIALS
A	REDESIGNED, SHORTENED, ADDED SIDE FLANGES.	7/14	DK



FORMED DETAILS



FLAT PATTERN

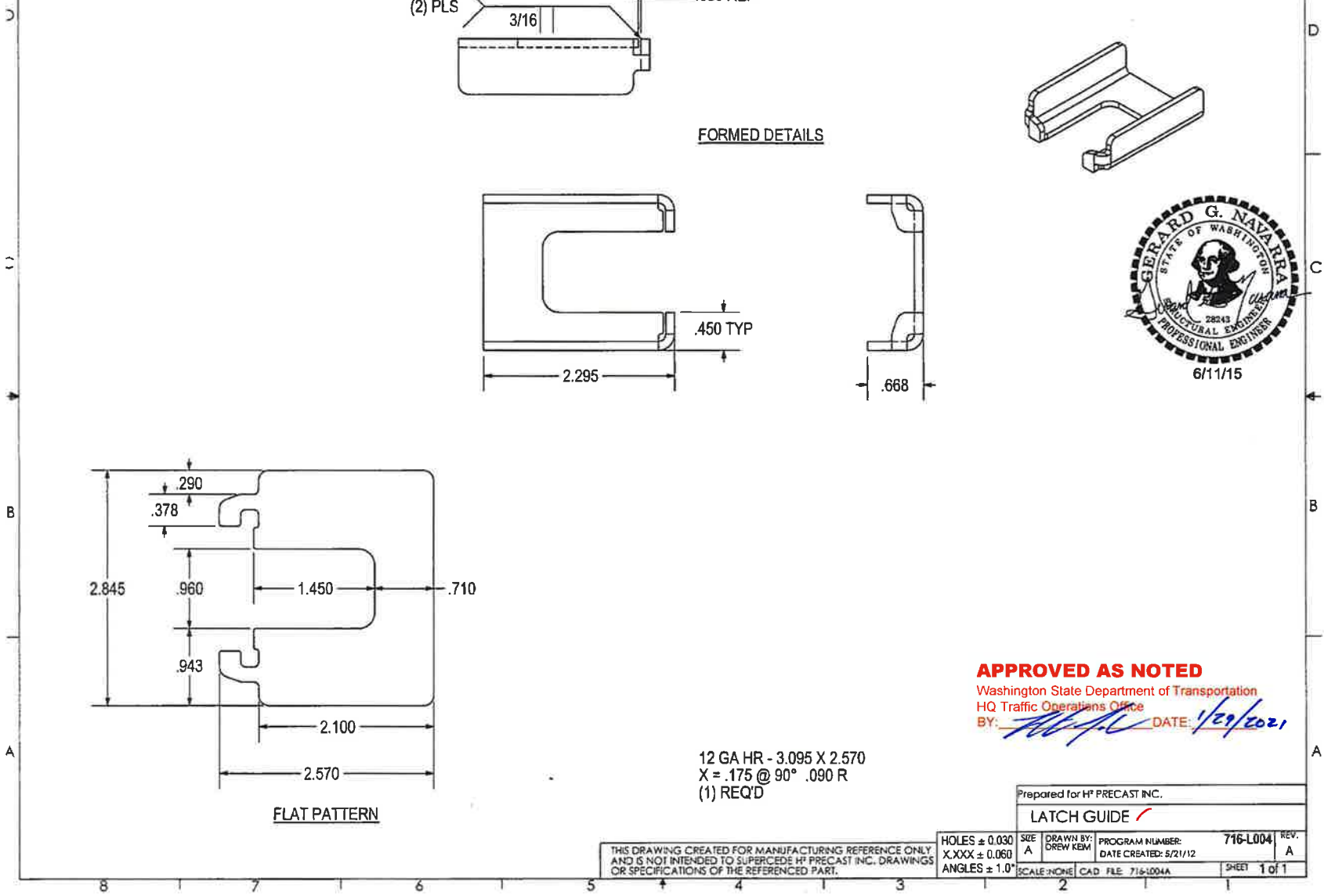
12 GA HR - 3.095 X 2.570
X = .175 @ 90° .090 R
(1) REQ'D

APPROVED AS NOTED
Washington State Department of Transportation
HQ Traffic Operations Office
BY: *[Signature]* DATE: 1/29/2021

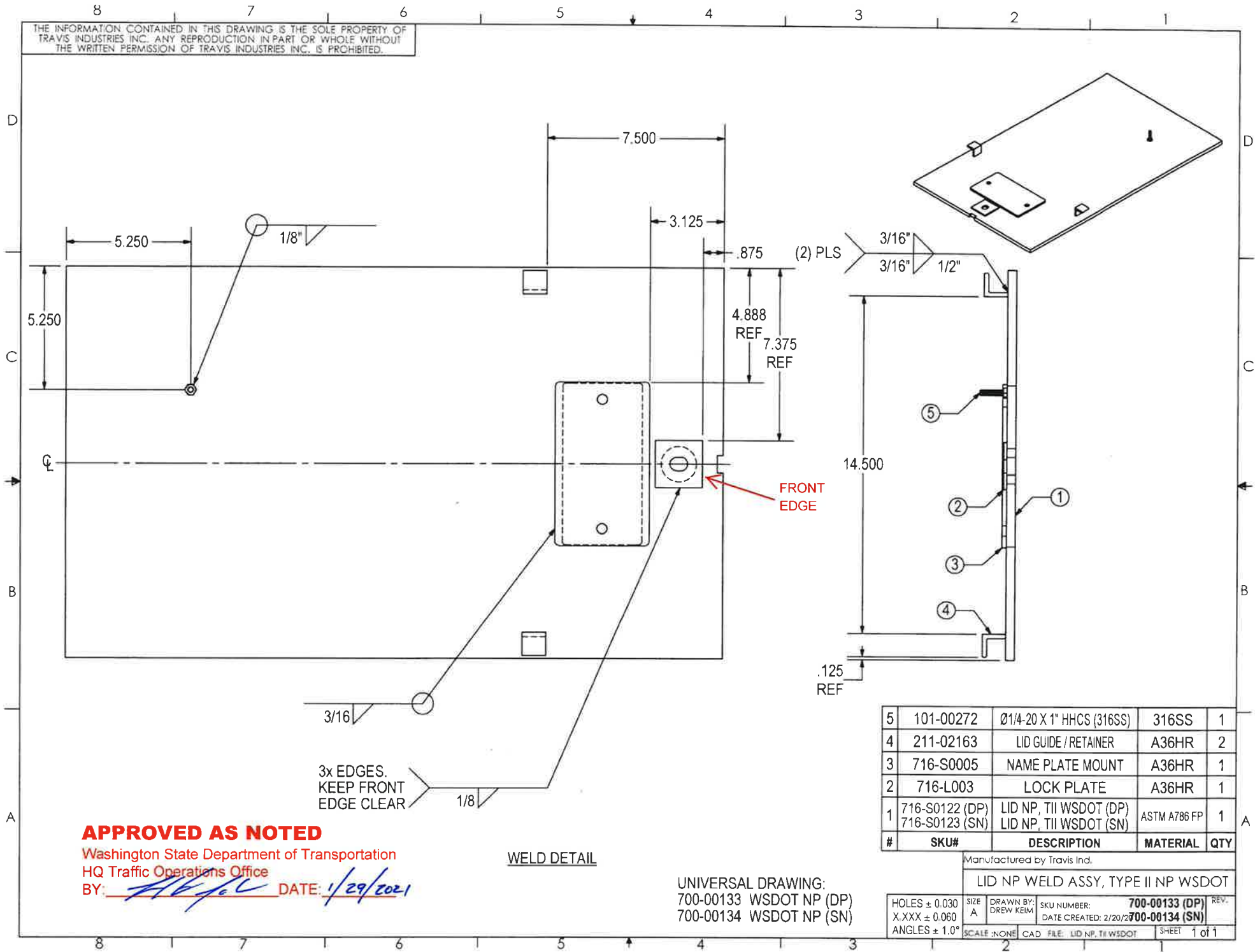
Prepared for H² PRECAST INC.
LATCH GUIDE

THIS DRAWING CREATED FOR MANUFACTURING REFERENCE ONLY AND IS NOT INTENDED TO SUPERCEDE H² PRECAST INC. DRAWINGS OR SPECIFICATIONS OF THE REFERENCED PART.

HOLES ± 0.030	SIZE A	DRAWN BY: DREW KEW	PROGRAM NUMBER: 716-L004	REV. A
X.XXX ± 0.060			DATE CREATED: 5/21/12	
ANGLES ± 1.0°	SCALE: NONE	CAD FILE: 716-L004A	SHEET 1 of 1	



THE INFORMATION CONTAINED IN THIS DRAWING IS THE SOLE PROPERTY OF TRAVIS INDUSTRIES INC. ANY REPRODUCTION IN PART OR WHOLE WITHOUT THE WRITTEN PERMISSION OF TRAVIS INDUSTRIES INC. IS PROHIBITED.



5	101-00272	Ø1/4-20 X 1" HHCS (316SS)	316SS	1
4	211-02163	LID GUIDE / RETAINER	A36HR	2
3	716-S0005	NAME PLATE MOUNT	A36HR	1
2	716-L003	LOCK PLATE	A36HR	1
1	716-S0122 (DP) 716-S0123 (SN)	LID NP, TII WSDOT (DP) LID NP, TII WSDOT (SN)	ASTM A786 FP	1
#	SKU#	DESCRIPTION	MATERIAL	QTY

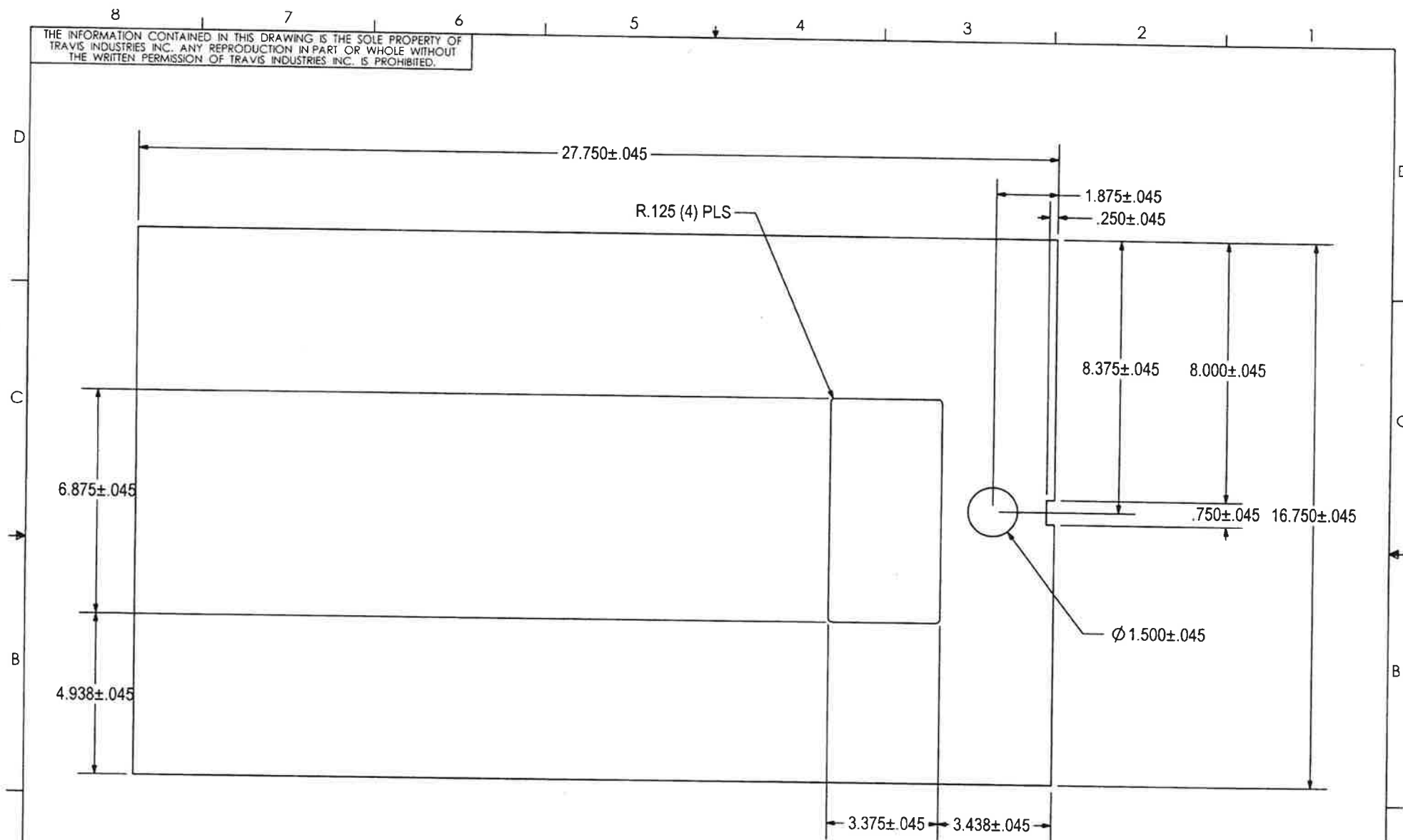
Manufactured by Travis Ind.
LID NP WELD ASSY, TYPE II NP WSDOT
 SIZE A
 DRAWN BY: DREW KEIM
 SKU NUMBER: **700-00133 (DP)** REV.
 DATE CREATED: 2/20/20**700-00134 (SN)**
 SCALE: NONE
 CAD FILE: LID.NP.TII.WSDOT
 SHEET 1 of 1

APPROVED AS NOTED
 Washington State Department of Transportation
 HQ Traffic Operations Office
 BY: *[Signature]* DATE: *1/29/2021*

WELD DETAIL

UNIVERSAL DRAWING:
 700-00133 WSDOT NP (DP)
 700-00134 WSDOT NP (SN)

THE INFORMATION CONTAINED IN THIS DRAWING IS THE SOLE PROPERTY OF TRAVIS INDUSTRIES INC. ANY REPRODUCTION IN PART OR WHOLE WITHOUT THE WRITTEN PERMISSION OF TRAVIS INDUSTRIES INC. IS PROHIBITED.



APPROVED

Washington State Department of Transportation
 HQ Traffic Operations Office

BY: *[Signature]* DATE: 1/29/2021

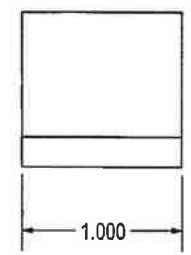
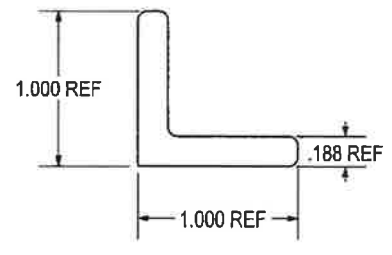
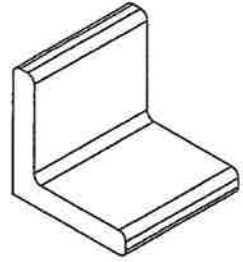
3/8 DIAMOND PLATE / SLIPNOT (ASTM A786)

UNIVERSAL DWG:
 716-S0122 (DP)
 716-S0123 (SN)

Manufactured by Travis Ind.			
LID NP, TII WSDOT			
SIZE A	DRAWN BY: DREW KEIM	SKU NUMBER: DATE CREATED: 2/20/20	REV.
HOLES ± 0.030 X.XXX ± 0.060 ANGLES ± 1.0°	SCALE: NONE	CAD FILE: 716-S0122	SHEET 1 of 1

THE INFORMATION CONTAINED IN THIS DRAWING IS THE SOLE PROPERTY OF
H² PRECAST INC. ANY REPRODUCTION IN PART OR WHOLE WITHOUT THE
WRITTEN PERMISSION OF FM&M IS PROHIBITED.

This assembly is constructed and tested to conform with WSDOT
Standard Specification 9-29.2(2), Standard Duty Junction Boxes
9-29.2(1)



ANGLE, 1 x 1 x 3/16 X 1.000 LONG
(2) REQ'D

APPROVED AS NOTED

Washington State Department of Transportation
HQ Traffic Operations Office
BY: *[Signature]* DATE: 4/29/2021

THIS DRAWING CREATED FOR MANUFACTURING REFERENCE ONLY
AND IS NOT INTENDED TO SUPERCEDE H² PRECAST INC. DRAWINGS
OR SPECIFICATIONS OF THE REFERENCED PART.

HOLES ± 0.030
X.XXX ± 0.060
ANGLES ± 1.0°

Prepared for H ² PRECAST INC.			
LID GUIDE / RETAINER			
SIZE A	DRAWN BY: DREW KBM	PROGRAM NUMBER: DATE CREATED: 5/7/14	211-02163 REV.
SCALE: NONE		CAD FILE: 716-F0056	SHEET 1 of 1

D
C
B
A

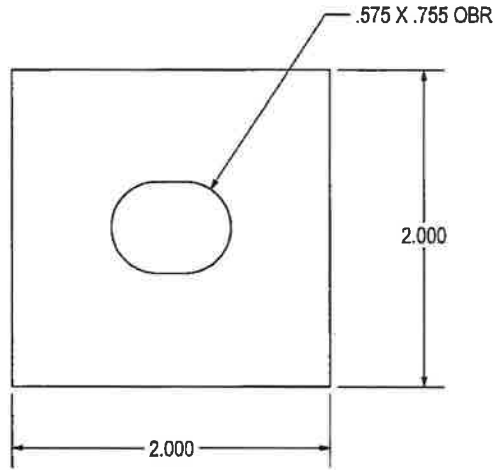
D
C
B
A

8 7 6 5 4 3 2 1

THE INFORMATION CONTAINED IN THIS DRAWING IS THE SOLE PROPERTY OF
H² PRECAST INC. ANY REPRODUCTION IN PART OR WHOLE WITHOUT THE
WRITTEN PERMISSION OF H² PRECAST INC. IS PROHIBITED.

This assembly is constructed and tested to conform with WSDOT
Standard Specification 9-29.2(1); Standard Duty Junction Boxes
9-29.2(1)

D
C
B
A



APPROVED AS NOTED

Washington State Department of Transportation
HQ Traffic Operations Office

BY: *[Signature]* DATE: 1/29/2021

1/8 HR - 2.000 X 2.000
(1) REQ'D

THIS DRAWING CREATED FOR MANUFACTURING REFERENCE ONLY
AND IS NOT INTENDED TO SUPERCEDE H² PRECAST INC. DRAWINGS
OR SPECIFICATIONS OF THE REFERENCED PART.

Prepared for H ² PRECAST INC.			
LOCK PLATE ✓			
SIZE A	DRAWN BY: DREW KEM	PROGRAM NUMBER: 716-1003	REV.
SCALE: NONE		CAD FILE: 716-1003	SHEET 1 of 1

8 1 7 1 6 1 5 4 4 1 3 1 2 1 1

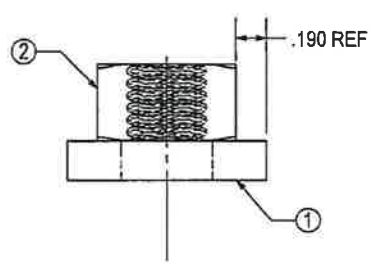
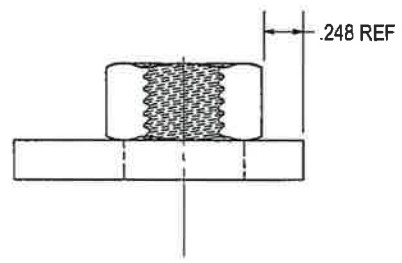
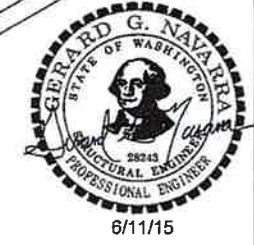
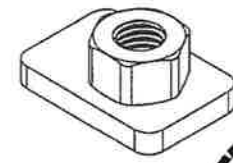
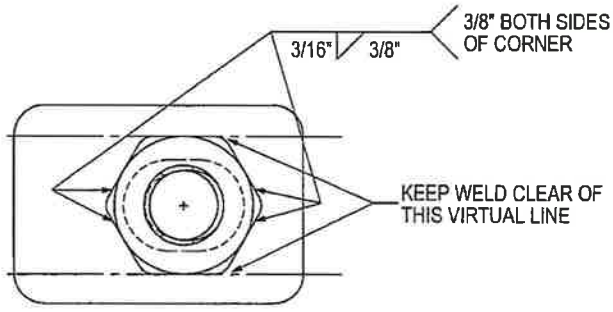
THE INFORMATION CONTAINED IN THIS DRAWING IS THE SOLE PROPERTY OF HP PRECAST INC. ANY REPRODUCTION IN PART OR WHOLE WITHOUT THE WRITTEN PERMISSION OF FM&M IS PROHIBITED.

This assembly is constructed and tested to conform with WSDOT Standard Specification ~~9-28.2(3)~~ Standard Duty Junction Boxes 9-29.2(1)

REV	DESCRIPTION	DATE	INITIALS
A	MODIFEID WELD NOTE. ADDED NOTE.	7/14	DK

D
C
B
A

D
C
B
A



APPROVED AS NOTED
 Washington State Department of Transportation
 HQ Traffic Operations Office
 BY: *[Signature]* DATE: *7/29/2021*

#	SKU#	DESCRIPTION	MATERIAL	QTY.
2	101-00047	NUT, HEX(HEAVY) 1/2-13 ✓	316SS ✓	1
1	716-L002	LOCK LATCH	A36HR	1

Prepared for HP PRECAST INC.
LOCK TAB WELD ASSY ✓

THIS DRAWING CREATED FOR MANUFACTURING REFERENCE ONLY AND IS NOT INTENDED TO SUPERCEDE HP PRECAST INC. DRAWINGS OR SPECIFICATIONS OF THE REFERENCED PART.

HOLES ± 0.030	SIZE A	DRAWN BY: DREW KBM	PROGRAM NUMBER: 700-00005	REV. A
X.XXX ± 0.060		DATE CREATED: 4/28/14		
ANGLES ± 1.0°	SCALE: NONE	CAD FILE: 700-00005A	SHEET 1 of 1	

8 | 7 | 6 | 5 | 4 | 3 | 2 | 1

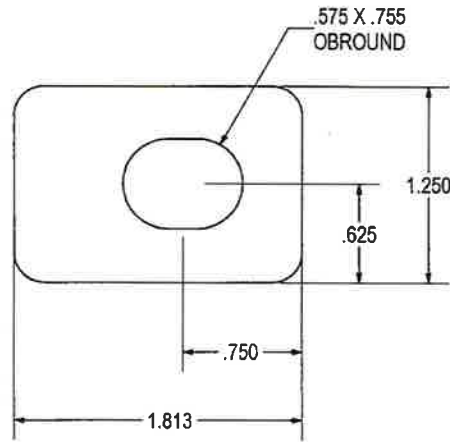
THE INFORMATION CONTAINED IN THIS DRAWING IS THE SOLE PROPERTY OF H² PRECAST INC. ANY REPRODUCTION IN PART OR WHOLE WITHOUT THE WRITTEN PERMISSION OF FM&M IS PROHIBITED.

This assembly is constructed and tested to conform with WSDOT Standard Specification 9-29.2(2), Standard Duty Junction Boxes.
9-29.2(1)

REV	DESCRIPTION	DATE	INITIALS
A	1/4" HR WAS 3/8" HR	7/14	DK

D
C
B
A

D
C
B
A



APPROVED AS NOTED
Washington State Department of Transportation
HQ Traffic Operations Office
BY: *[Signature]* DATE: 7/29/2021

1/4 HR - 1.813 X 1.250
(1) REQ'D

THIS DRAWING CREATED FOR MANUFACTURING REFERENCE ONLY AND IS NOT INTENDED TO SUPERCEDE H² PRECAST INC. DRAWINGS OR SPECIFICATIONS OF THE REFERENCED PART.

HOLES ± 0.030
X.XXX ± 0.060
ANGLES ± 1.0°

Prepared for H ² PRECAST INC.			
LOCK LATCH ✓			
SIZE A	DRAWN BY: DREW KEW	PROGRAM NUMBER: DATE CREATED: 5/21/12	716-L002 REV. A
SCALE: NONE	CAD FILE: 716-L002A	SHEET 1 of 1	

8 7 6 5 4 3 2 1