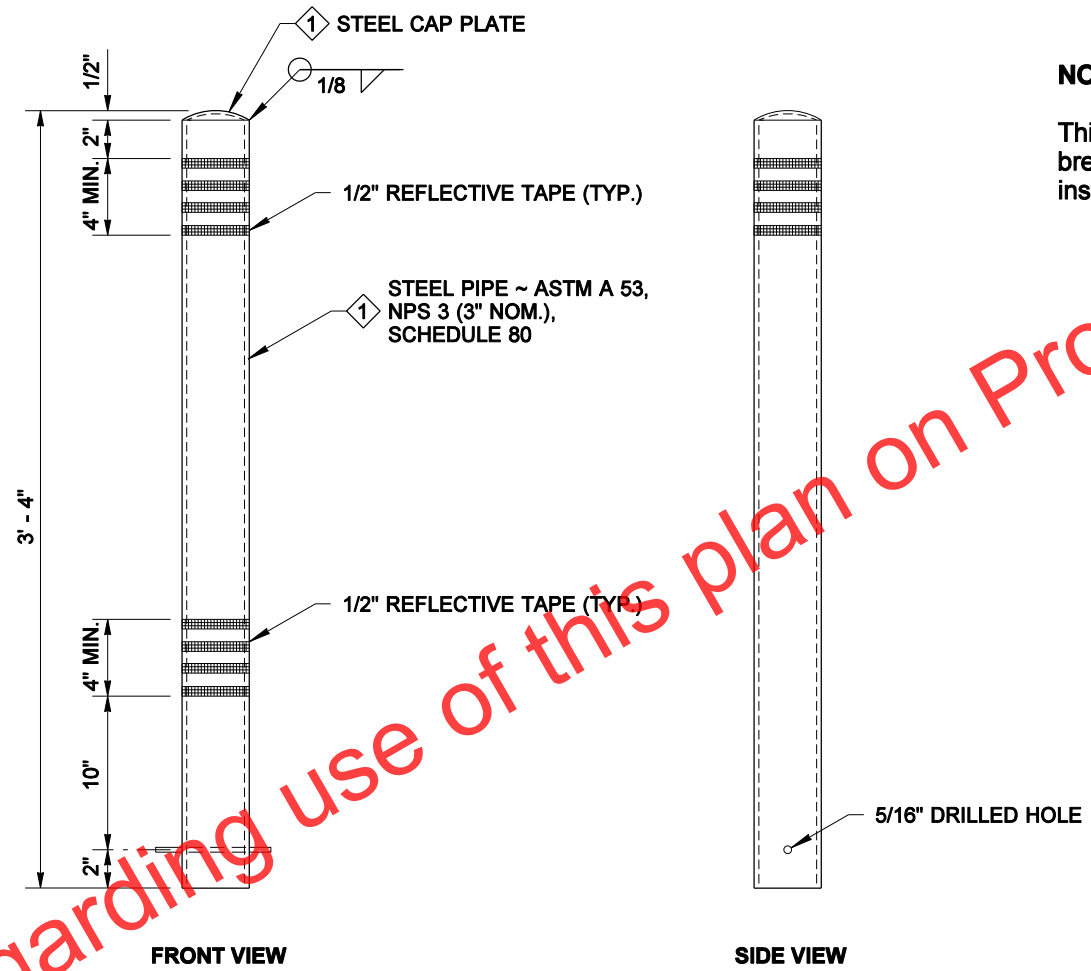
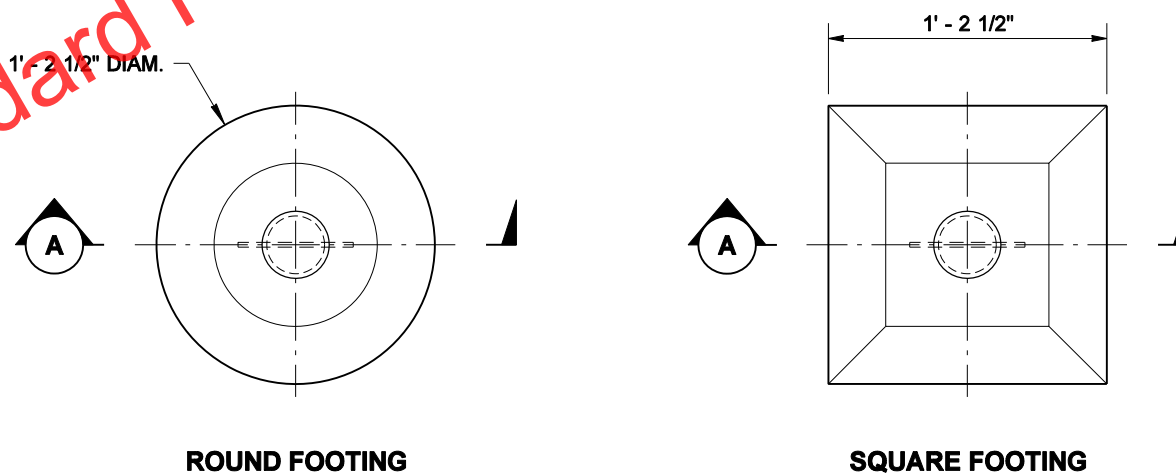


SECTION A



1 PAINT ASSEMBLY WITH A "HIGHLY VISIBLE" COLOR. (SAFETY YELLOW IS ACCEPTABLE)

POST



PLAN VIEW

NOTE
This bollard does not have an effective breakaway design feature and cannot be installed within the Design Clear Zone.

Contact Standard Plans Office regarding use of this plan on Projects



NOTE: THIS PLAN IS NOT A LEGAL ENGINEERING DOCUMENT UNLESS IT IS APPROVED AND SEALED BY THE ENGINEER AND APPROVED FOR BY THE STATE OF WASHINGTON. THIS PLAN IS FILED AT THE WASHINGTON STATE DEPARTMENT OF TRANSPORTATION. A COPY MAY BE OBTAINED UPON REQUEST.

BOLLARD TYPE 2

STANDARD PLAN H-60.20-01

SHEET 1 OF 1 SHEET

APPROVED FOR PUBLICATION

Pasco Bakotich III 07-03-08
STATE DESIGN ENGINEER DATE

