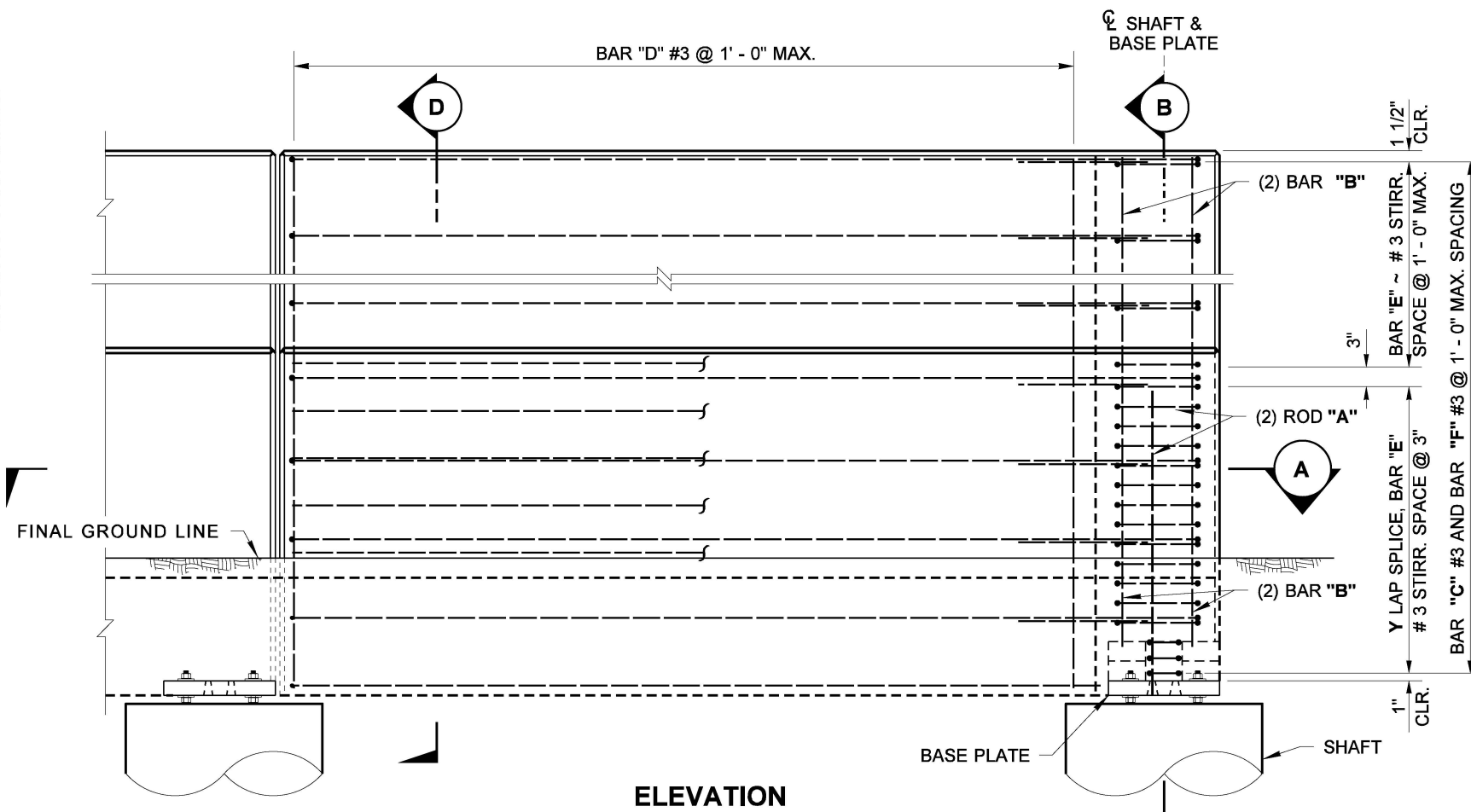
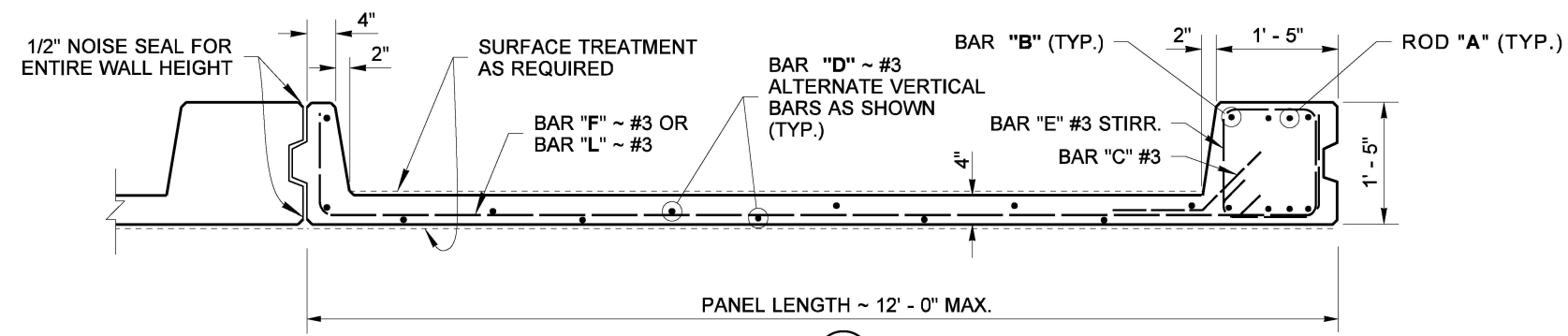


DRAWN BY: FERN LIDDELL



ELEVATION

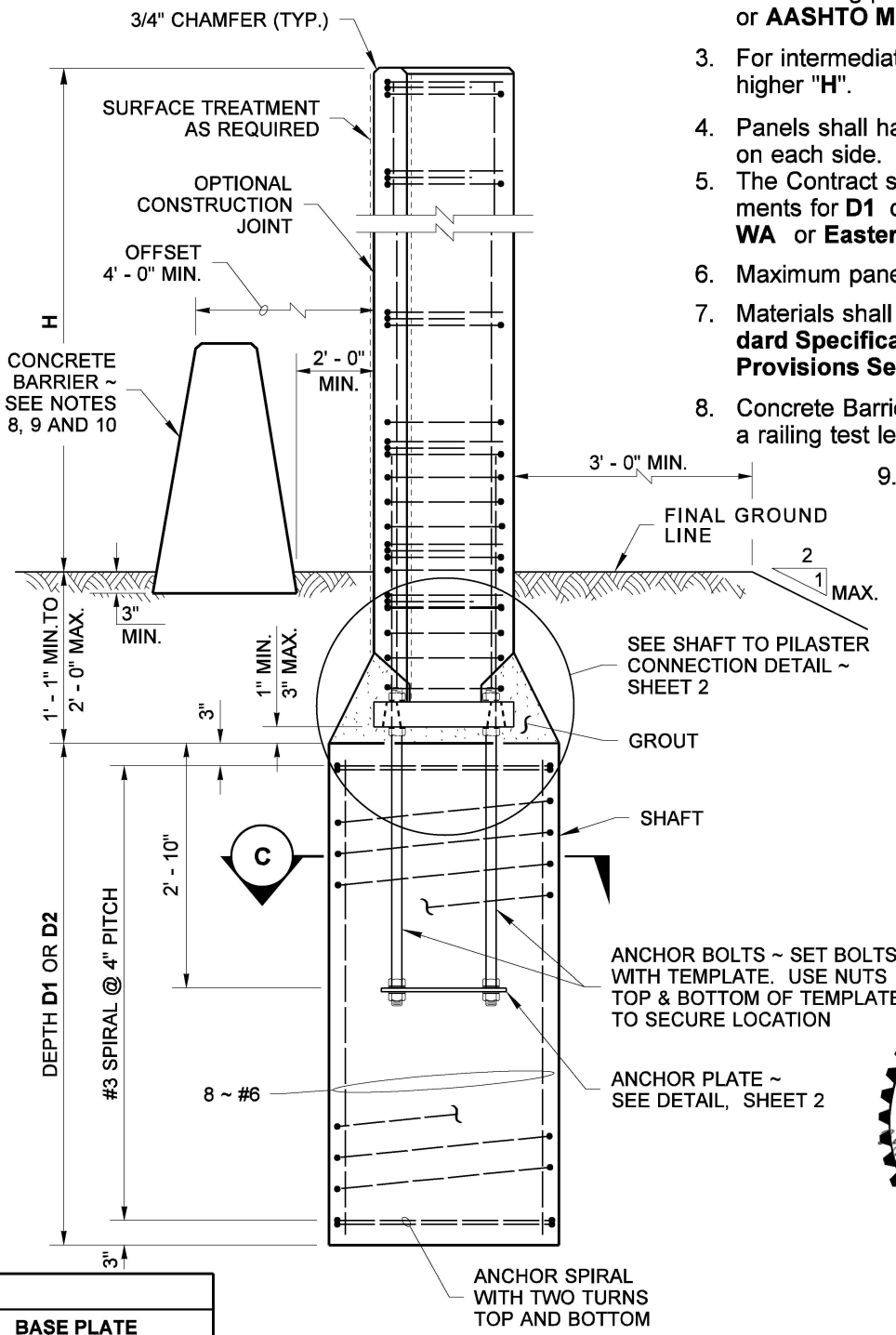


SECTION A PLAN

* ONLY ANCHOR BOLT OPTION FOR ROD "A" ALLOWED ~ WEDGE HEAD OPTION NOT ALLOWED

EXPOSED WALL HT H	WESTERN WASHINGTON						BASE PLATE		
	SHAFT DEPTH		ROD "A"	BAR "B"	LAP-SPLICE Y	ANCHOR BOLT DIAM.	F	Q	T
	D1	D2							
6' - 0"	7' - 9"	6' - 3"	3/4"	4 ~ #4	3' - 0"	3/4"	1 1/8"	1 21/32"	1 1/2"
8' - 0"	7' - 9"	6' - 3"	3/4"	4 ~ #4	3' - 0"	3/4"	1 1/8"	1 21/32"	1 1/2"
10' - 0"	7' - 9"	6' - 3"	3/4"	4 ~ #5	3' - 0"	3/4"	1 1/8"	1 21/32"	1 1/2"
12' - 0"	8' - 0"	6' - 9"	7/8"	4 ~ #6	3' - 9"	7/8"	1 1/8"	1 21/32"	1 1/2"
14' - 0"	9' - 0"	7' - 3"	1"	4 ~ #6	6' - 0"	1"	1 3/8"	2"	2"
16' - 0"	9' - 9"	8' - 0"	1 1/4"	4 ~ #6	8' - 0"	1 1/8"	1 3/8"	2"	2"
18' - 0"	10' - 3"	8' - 6"	1 1/4"*	4 ~ #6	10' - 0"	1 1/4"	*	*	2 1/4"

EXPOSED WALL HT H	EASTERN WASHINGTON						BASE PLATE		
	SHAFT DEPTH		ROD "A" DIAM.	BAR "B"	LAP-SPLICE Y	ANCHOR BOLT DIAM.	F	Q	T
	D1	D2							
6' - 0"	7' - 9"	6' - 3"	3/4"	4 ~ #4	3' - 3"	3/4"	1 1/8"	1 21/32"	1 1/2"
8' - 0"	7' - 9"	6' - 3"	3/4"	4 ~ #4	3' - 3"	3/4"	1 1/8"	1 21/32"	1 1/2"
10' - 0"	7' - 9"	6' - 3"	3/4"	4 ~ #4	4' - 0"	3/4"	1 1/8"	1 21/32"	1 1/2"
12' - 0"	7' - 9"	6' - 3"	3/4"	4 ~ #5	4' - 0"	3/4"	1 1/8"	1 21/32"	1 1/2"
14' - 0"	8' - 0"	6' - 6"	7/8"	4 ~ #6	4' - 0"	7/8"	1 1/8"	1 21/32"	1 1/2"
16' - 0"	8' - 6"	7' - 3"	1"	4 ~ #6	6' - 0"	1"	1 3/8"	2"	2"
18' - 0"	9' - 3"	7' - 9"	1 1/8"	4 ~ #7	6' - 0"	1 1/8"	1 3/8"	2"	2"



SECTION B TYPICAL SECTION

- NOTES**
- All rods "A" and Anchor bolts shall be per **ASTM F1554** grade 105.
 - Anchor Bolts, Nuts, Washers and Rod "A" shall have a protective coating of either Hot Dipped Galvanizing per **AASHTO M232** for hardware or **AASHTO M111** for Washers and Plates.
 - For intermediate wall heights, use the next higher "H".
 - Panels shall have at least 3 feet of level ground on each side.
 - The Contract specifies actual foundation requirements for **D1** or **D2** and location of **Western WA** or **Eastern WA**.
 - Maximum panel length shall be 12 feet.
 - Materials shall meet the requirements of **Standard Specifications Section 6-12** and **Special Provisions Section 6-12**.
 - Concrete Barrier shall be MASH compliant with a railing test level of TL-4 or less.
 - Single Slope Concrete Barrier is shown. Other MASH compliant concrete barrier shapes are permitted.
 - The concrete barrier embed-minimum shall be 3" minimum, or as required for the concrete barrier selected.

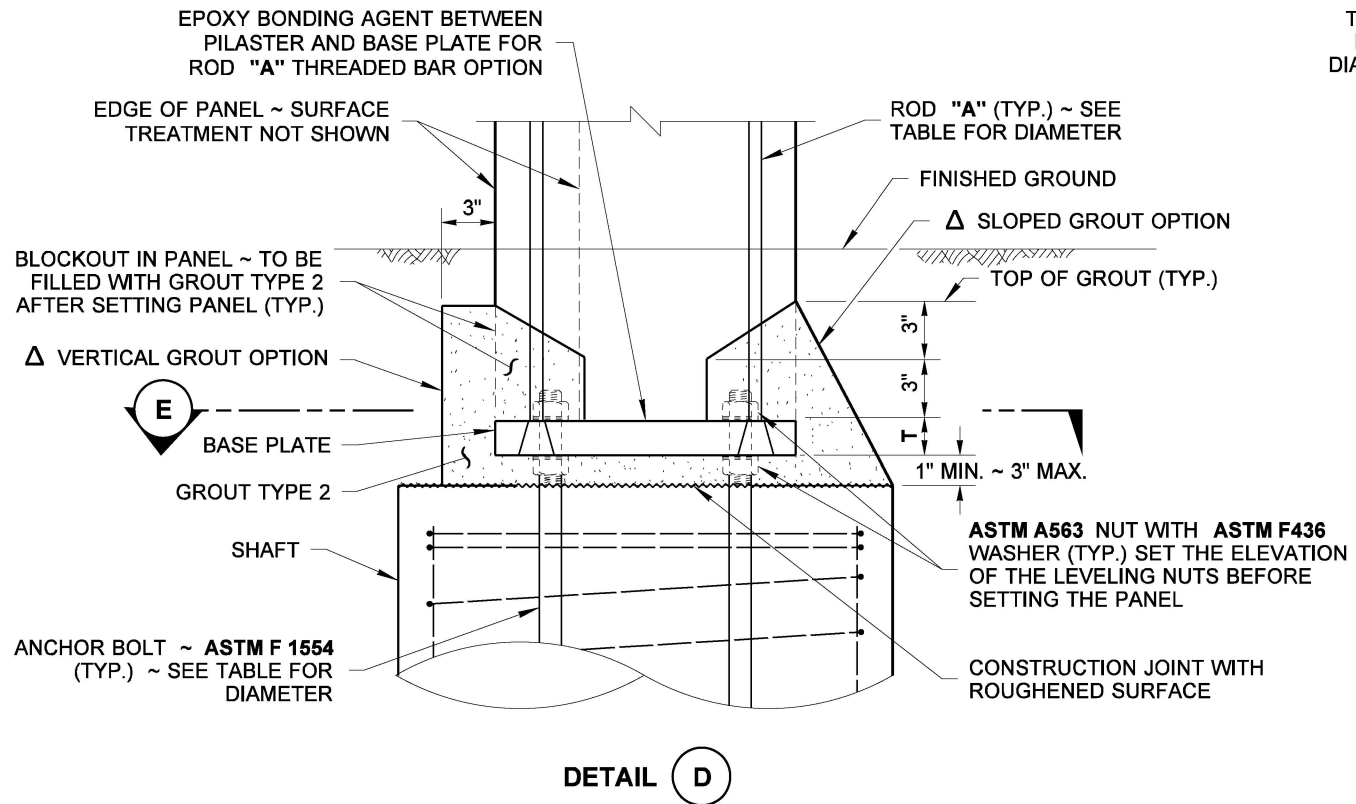


Aug 13, 2021

NOISE BARRIER WALL TYPE 14
STANDARD PLAN D-2.46-02
 SHEET 1 OF 3 SHEETS

APPROVED FOR PUBLICATION
 Aug 13, 2021
 STATE DESIGN ENGINEER
 Washington State Department of Transportation

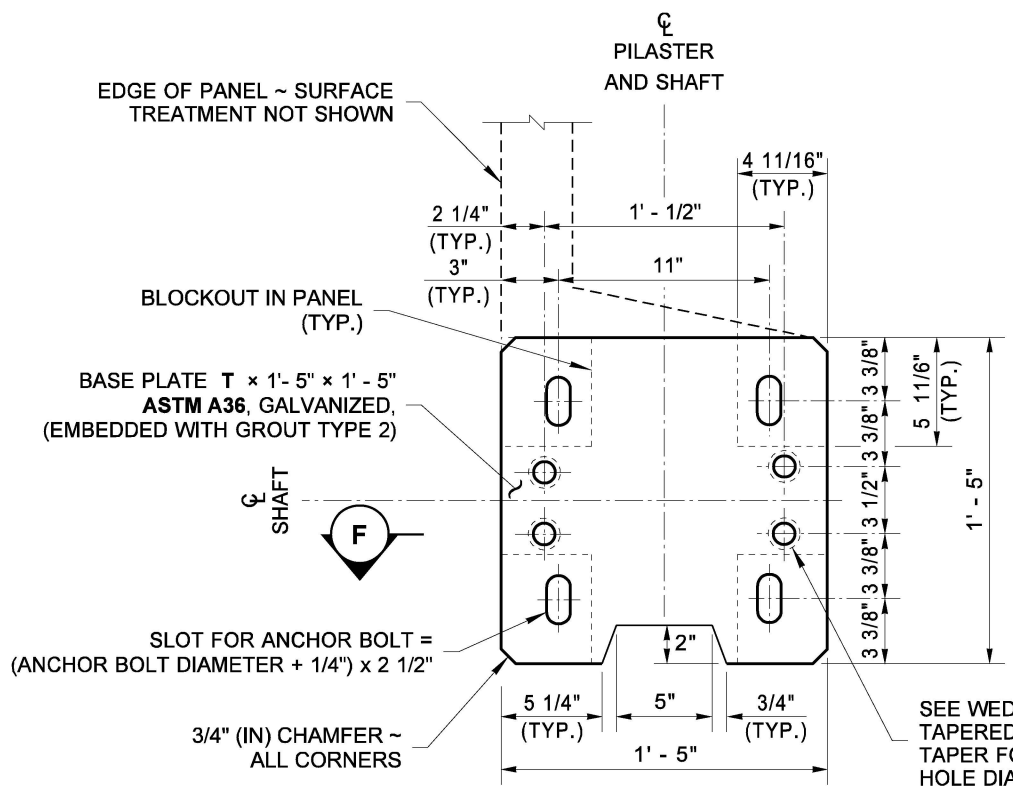
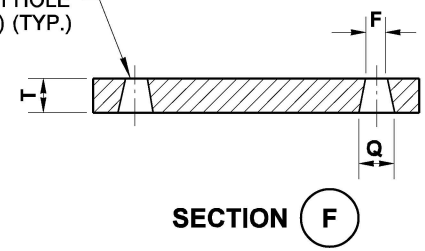
DRAWN BY: FERN LIDDELL



SHAFT TO PANEL CONNECTION

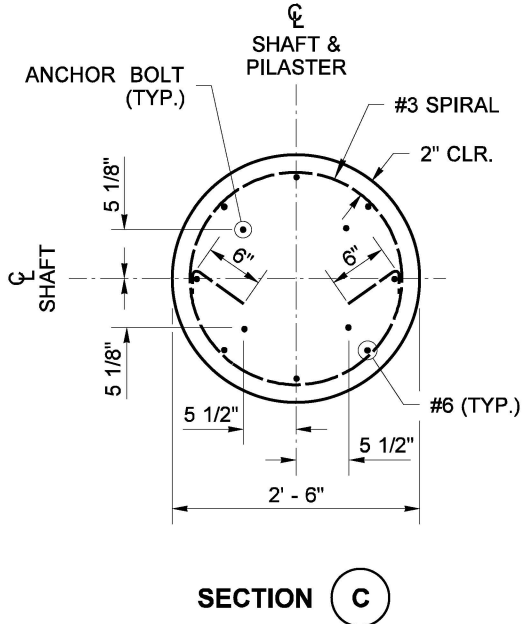
Δ EITHER OPTION AVAILABLE TO GROUT BLOCKOUTS, ANCHOR BOLTS, BASE PLATE TO LIMITS SHOWN

TAPERED HOLE FOR WEDGE HEAD OPTION SHOWN
NO TAPER FOR ANCHOR BOLT OPTION WITH HOLE
DIAMETER = ROD "A" (IN) DIAMETER + 1/16" (IN) (TYP.)

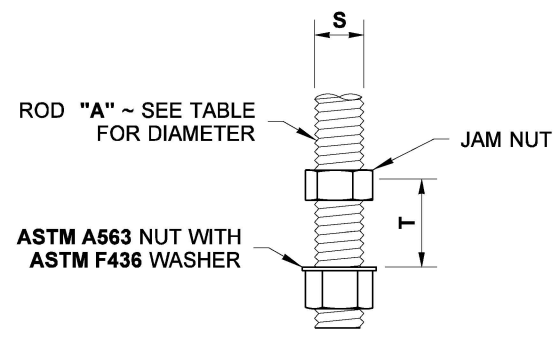


**SECTION E
BASE PLATE DETAIL**

BASE PLATE, SHAFT AND TRAFFIC BARRIER NOT SHOWN FOR CLARITY

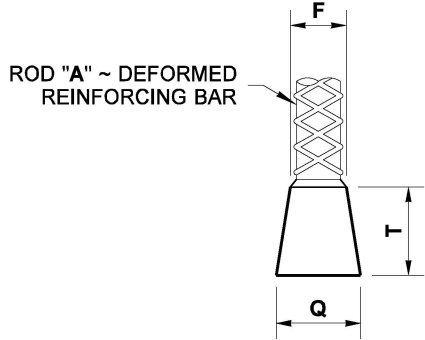


SECTION C



**ROD "A"
ANCHOR BOLT OPTION**

ASTM A706 GR 105 FOR ALL HEIGHTS "H"

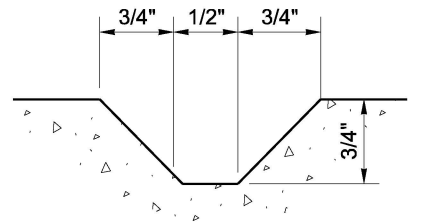


**ROD "A"
WEDGE HEAD OPTION**

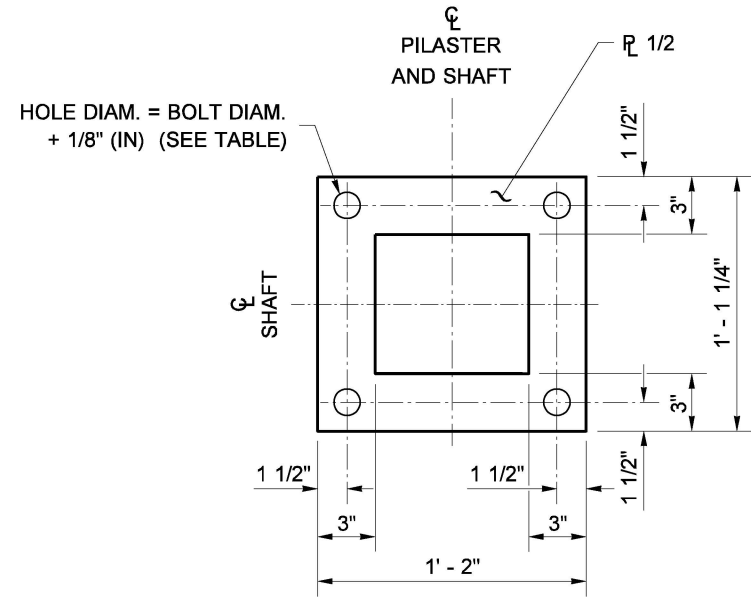
ASTM A706 GR 80 AS ALLOWED PER TABLE, FOR HEIGHTS "H" ≤ 16' IN THE WEST AND HEIGHTS "H" ≤ 18' IN THE EAST

WIND AND SEISMIC LIMITATIONS			
LOCATION	WIND EXPOSURE	WIND VELOCITY (MPH)	PEAK SEISMIC GROUND ACCELERATION COEFFICIENT ON ROCK, SITE CLASS B (g)
WESTERN WASHINGTON	SPARSE SUBURBAN	100	0.45
EASTERN WASHINGTON	SPARSE SUBURBAN	80	0.19

FOUNDATION DESIGN	
SOIL TYPE	ANGLE OF INTERNAL FRICTION, ᾱ (DEGREES)
D1	32
D2	38



**DUMMY JOINT DETAIL
CAST IN PLACE BARRIER OPTION**
(SEE NOTE 9 ~ SHEET 1)





ANCHOR PLATE DETAIL



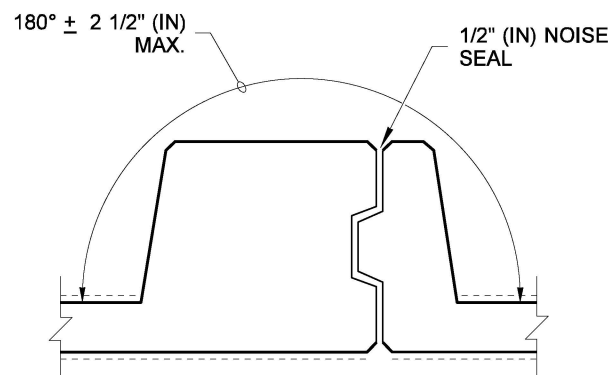
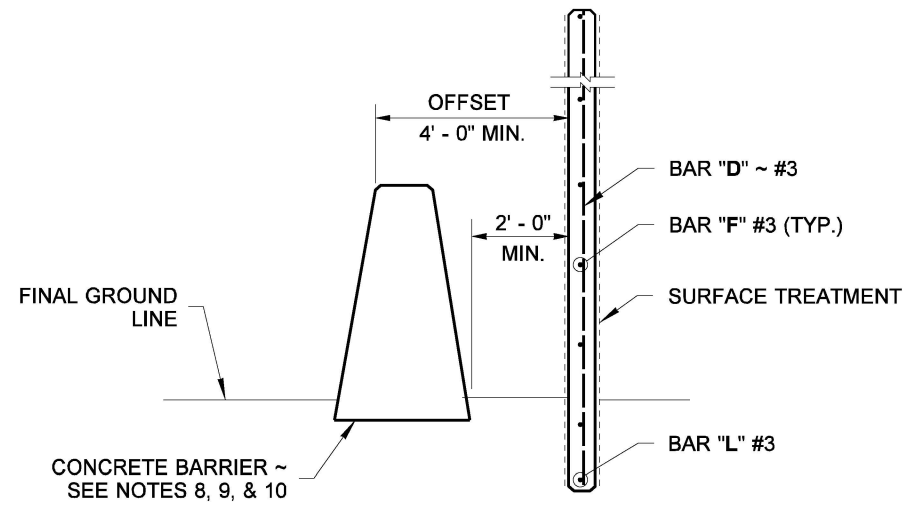
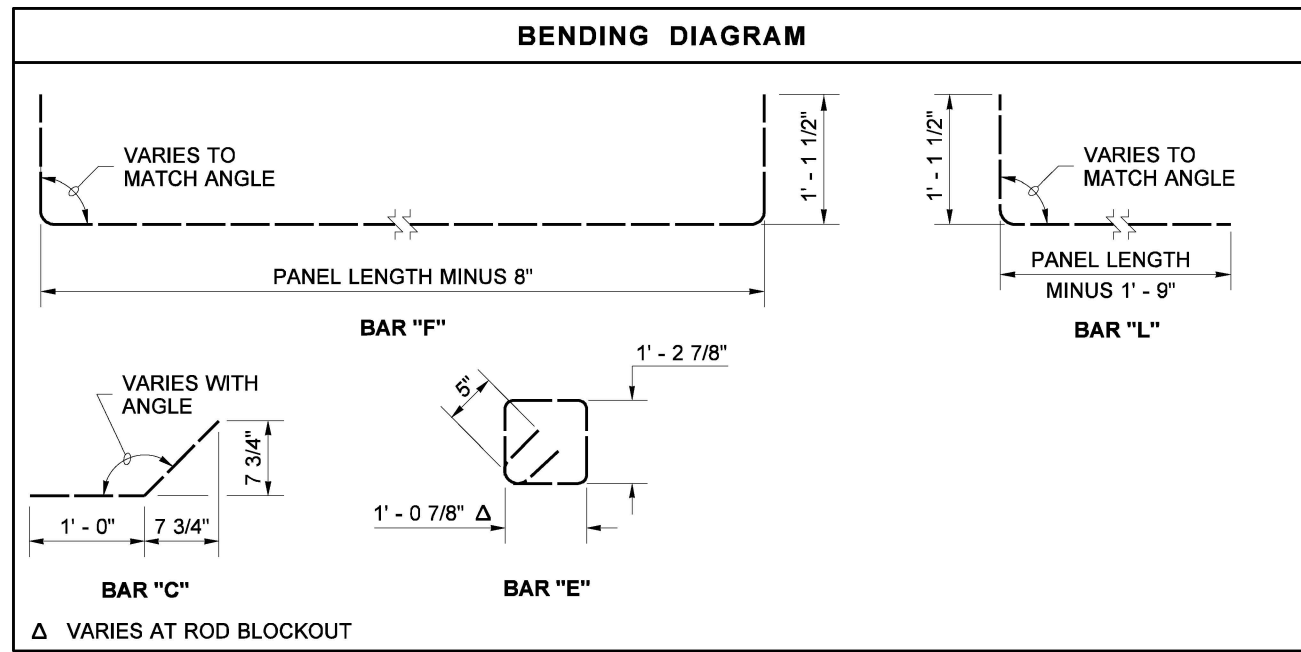
Aug 13, 2021

**NOISE BARRIER WALL
TYPE 14
STANDARD PLAN D-2.46-02**

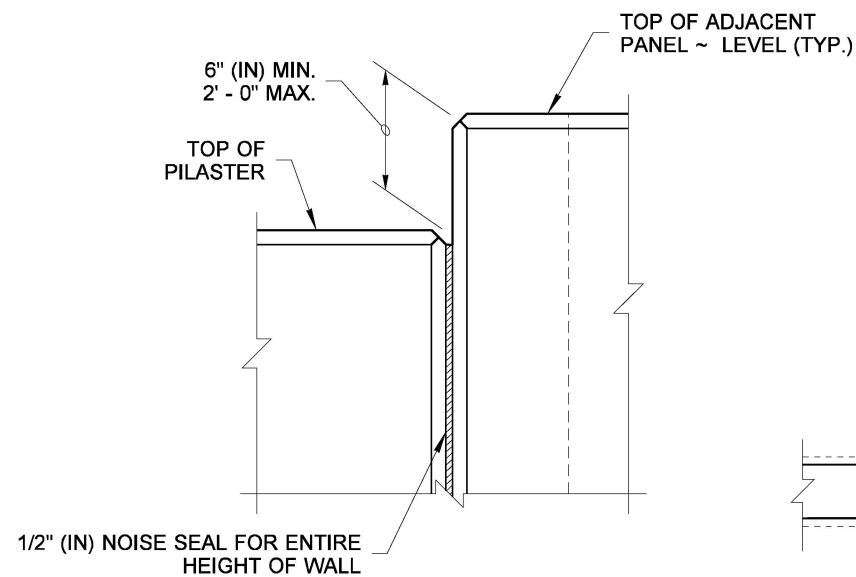
SHEET 2 OF 3 SHEETS

APPROVED FOR PUBLICATION

 Aug 13, 2021
 STATE DESIGN ENGINEER
 Washington State Department of Transportation

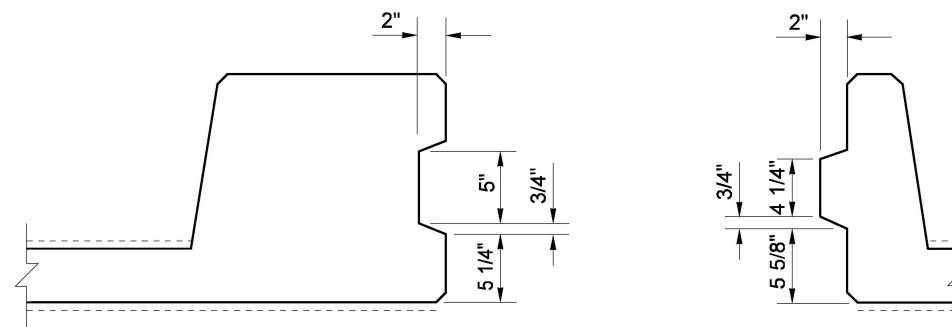
DRAWN BY: FERN LIDDELL



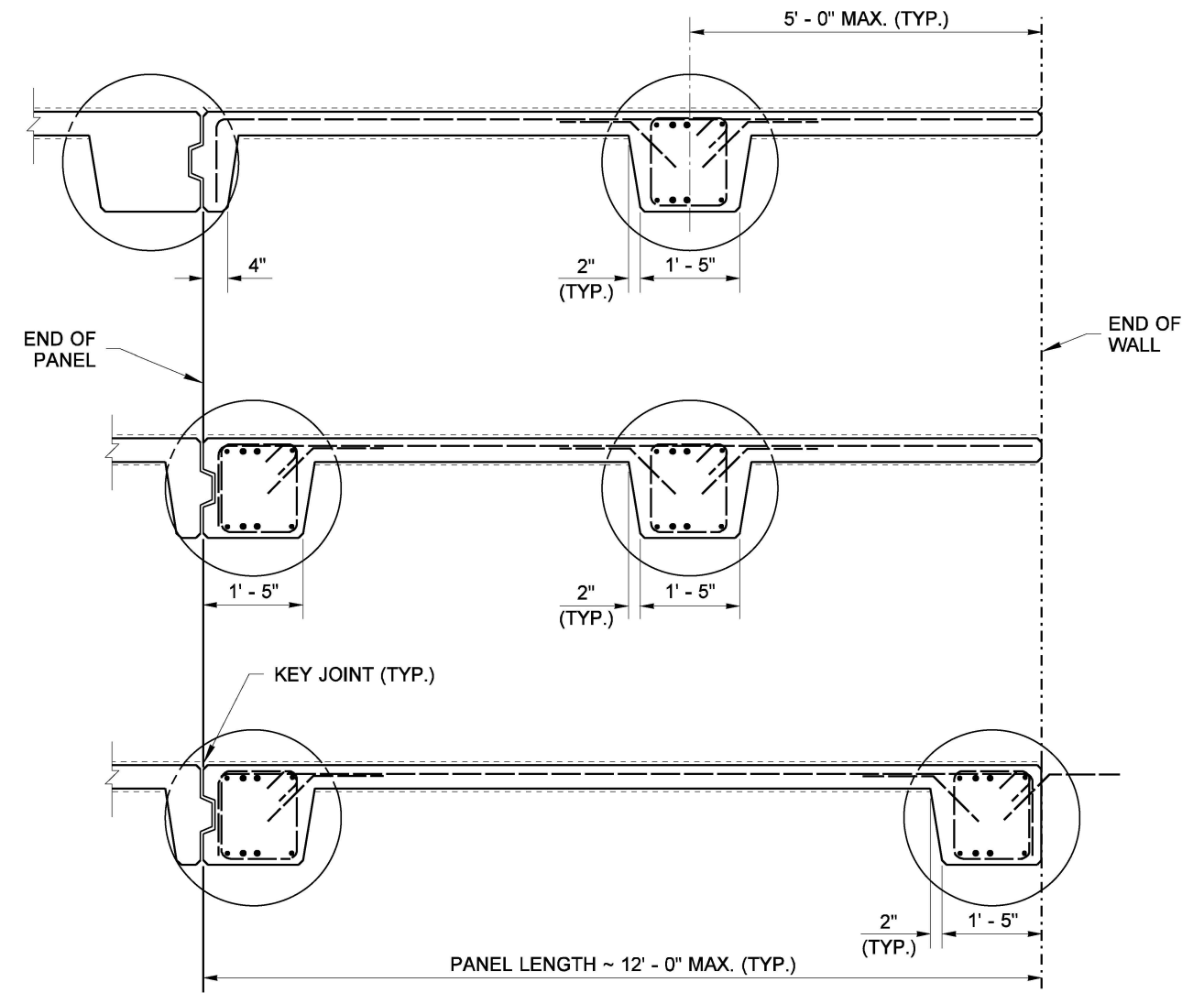
STANDARD PANEL ANGLE TOLERANCE



ELEVATION VIEW STEP DETAIL



PLAN VIEW SHEAR-KEY DETAIL



END PANEL OPTIONS



Aug 13, 2021

NOISE BARRIER WALL TYPE 14

STANDARD PLAN D-2.46-02

SHEET 3 OF 3 SHEETS

APPROVED FOR PUBLICATION

Aug 13, 2021

STATE DESIGN ENGINEER



Washington State Department of Transportation