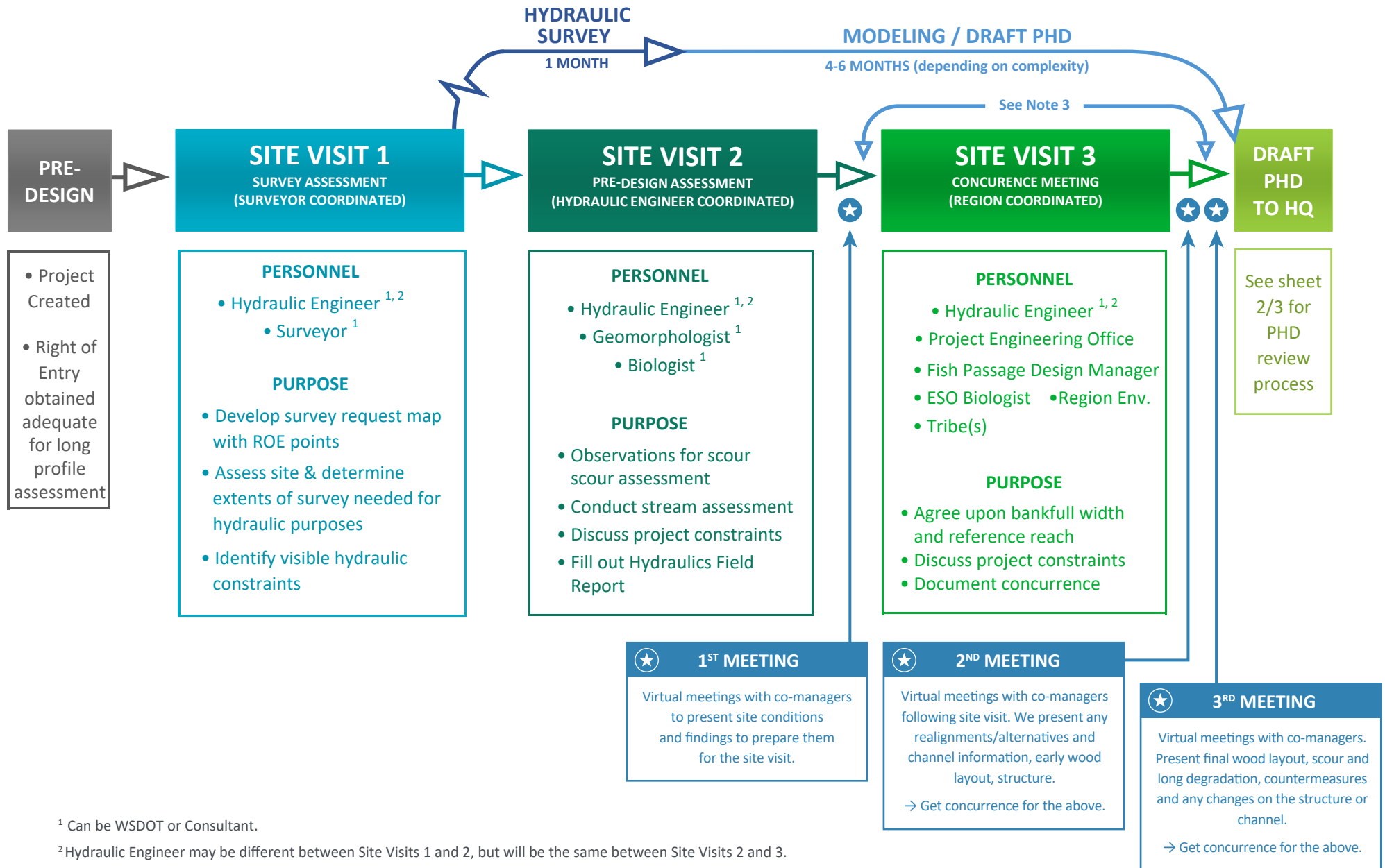


PRELIMINARY HYDRAULIC DESIGN (PHD) STREAM DESIGN PROCESS

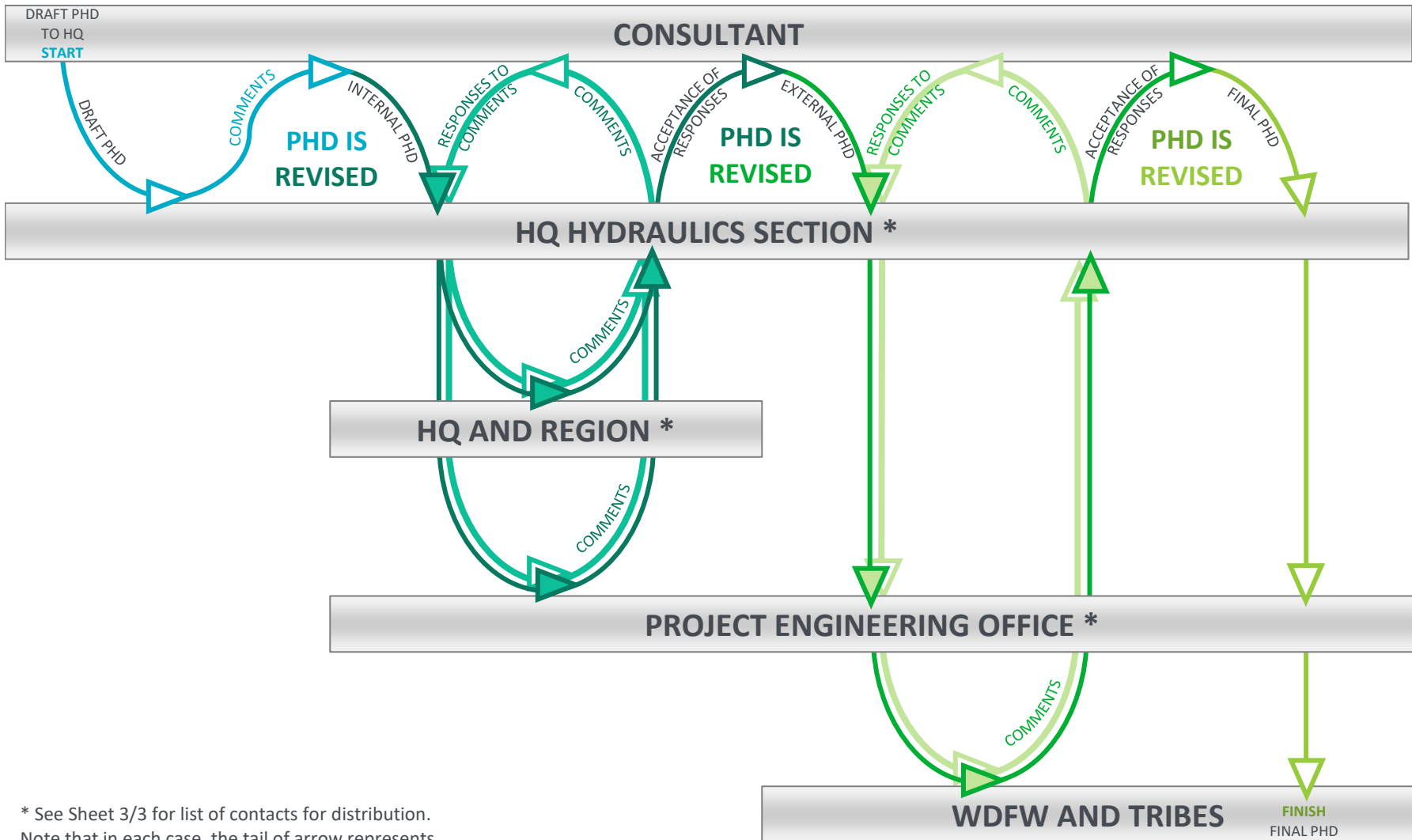


¹ Can be WSDOT or Consultant.

² Hydraulic Engineer may be different between Site Visits 1 and 2, but will be the same between Site Visits 2 and 3.

³ For complex sites additional meetings, coordination, and site visits may be necessary to discuss design updates and other challenges.

PRELIMINARY HYDRAULIC DESIGN (PHD) REPORT REVIEW PROCESS



* See Sheet 3/3 for list of contacts for distribution. Note that in each case, the tail of arrow represents sender, and head of arrow represents recipient.



**PRELIMINARY HYDRAULIC DESIGN (PHD)
REPORT REVIEW PROCESS - CONTACTS**

HQ HYDRAULICS SECTION						
State Hydraulic Director	Julie Heilman					
Fish Passage Design Manager OR	Heather Pittman					
Fish Passage Design Manager Direct Reports	Shaun Bevan, Hannah Morsch, Ryan Barkie					
Fish Passage Design Manager NWR	Channing Syms					
Fish Passage Design Manager Direct Reports	Gabe Ng, Brendan Leistiko, Erin Pletcher					
Hydraulic & Floodplain Design Manager	Luke Assink					
Hydrology Program Manager	Garrett Jackson					
Stormwater Design Manager	Alex Nguyen					
HQ ESO						
Fish Passage Delivery Program Manager	Kim Rydholm CC: Kyler Higgins					
Stream Restoration Program Manager	Susan Kanzler					
Biology Program Manager	Paul Wagner					
Biology Program Team	Tammy Schmidt					
	Jeff Dreier CC: Glen Kalisz					
	Jenni Dykstra (CED sites)					
	Marc Hershfield (Wildlife priority sites)					
HQ Geotechnical Office						
Fish Passage Delivery Program Manager	Gabriel Taylor					
HQ Bridge Office						
Bridge and Structures Office	Michael Rosa					
Bridge Scour Engineer	David Churchill					
HQ Design Office						
Assistant State Design Engineer	Kevin Miller, Dean Moon, Rafael Reyes, Jim Mahugh, Joanna Lowrey					
REGIONS	Northwest	Olympic	Southwest	South Central	North Central	Eastern
Project Engineer	As-assigned					
Assistant Project Engineer	As-assigned					
Design Team Leader	As-assigned					
Engineering Manager	Shane Spahr (MBA) Hung Huynh (Sno-King) John Chi (Connecting WA)	Lone Moody & Karen Boone Ricky Bhalla (Progressive DB 29)	Chad Hancock	Bob Hooker	Dan Lewis	Bob Hilmes
Biologist/Permit Coordinator	As-assigned					
Environmental Manager	Cameron Kukes	Jeff Sawyer CC: Damon Romero	Angie Haffie	William Sauriol	Cindy Volyn	Tammie Williams
Tribal Liasion	Eliza McGovern	Wayne Wiltse	Chad Hancock	Megan Nicodemus		
Assistant Region Environmental Manger	Ruth Park (Sno-King) & Mark Stamey (MBA)	Carl Ward				
Region Hydraulic Engineer	Vacant	Vacant	Jonathan Abuyan	Katie Jones	Keith Kusler	Jake Smith
Program Manager	Jessica Rooney	Gaius Sanoy	Brian McMullen	Robert Fleming	James Reynolds	Chad Simonson

Note that additional contacts for Mega Projects and other project offices are as-assigned.