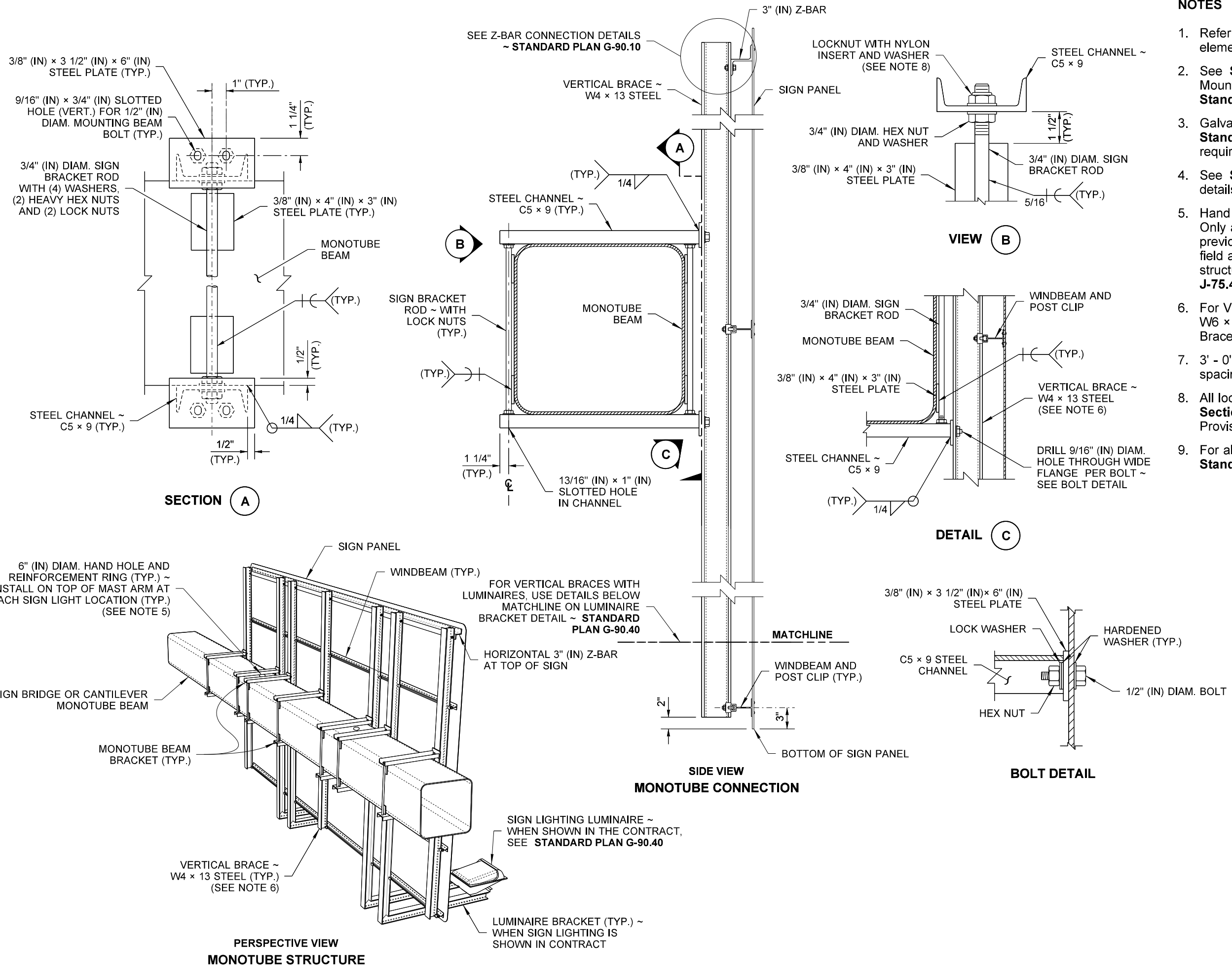


DRAWN BY: BILL BERENS



**NOTES**

1. Refer to Contract Plans for Monotube Beam Bracket element sizes, dimensions, and weld symbols.
2. See **Standard Plan G-90.10** for Sign Bracing and Mounting details. For Sign Bridge Structure parts, see **Standard Specification Section 9-28.14(2)**.
3. Galvanize all non-stainless steel parts. See **Standard Specification Section 9-28.14(2)** for requirements.
4. See **Standard Plan G-90.40** for Sign Lighting details.
5. Hand holes shall be installed at the time of fabrication. Only additional conduits for lighting accommodations to previously non-illuminated structures may be installed in field as long as the proper repairs are made to the structure. For details notshown, see **Standard Plan J-75.40**.
6. For VMS mounting, the Contractor may substitute W6 x 12 steel or W8 x 13 steel sections for the Vertical Brace W4 x 13 steel.
7. 3' - 0" max. Vertical Brace and Monotube Beam Bracket spacing for walk-in cabinet Type VMS installation.
8. All locknuts shall conform to **Standard Specification Section 9-28.11** as supplemented in the Special Provisions.
9. For all sign lighting bracing details not shown, see **Standard Plan G-90.11**.



**OVERHEAD SIGN MOUNTING (MONOTUBE STRUCTURE)**  
**STANDARD PLAN G-90.20-05**

SHEET 1 OF 1 SHEET

APPROVED FOR PUBLICATION