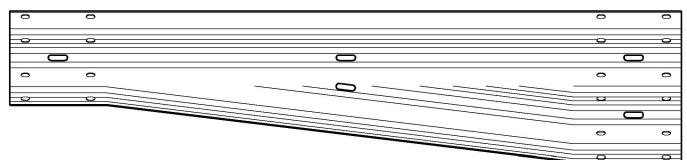
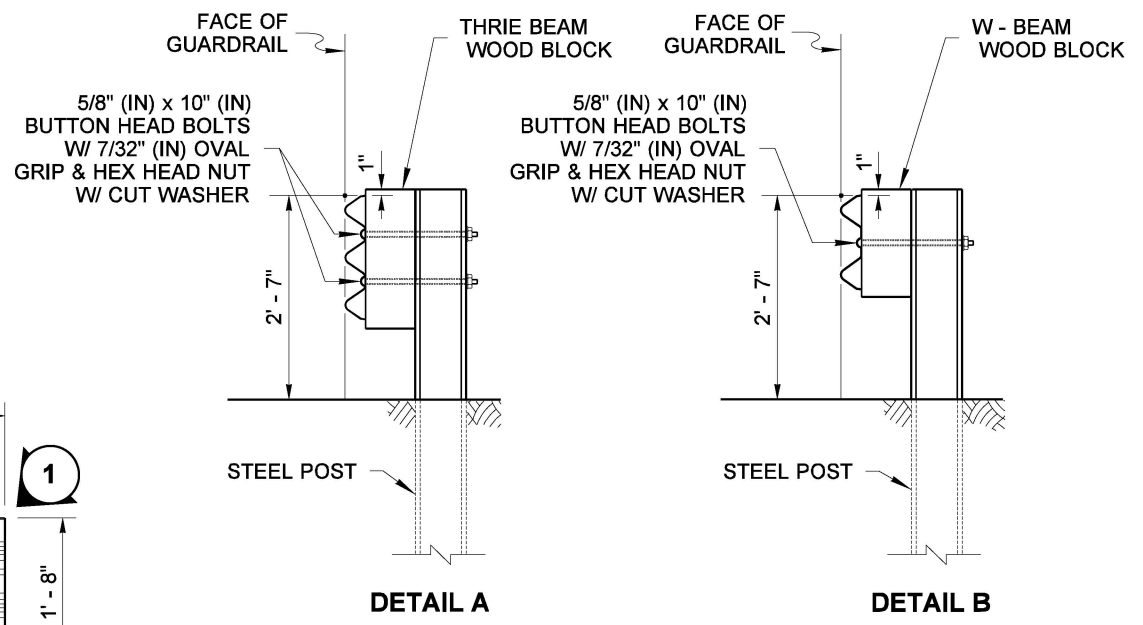


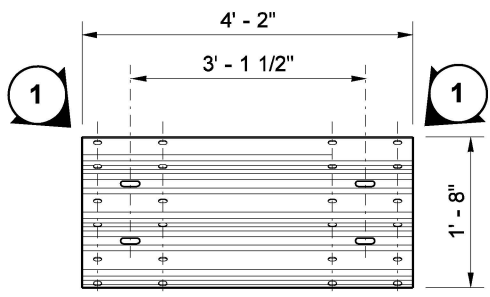
SEE CONTRACT PLANS FOR SPECIFIED CONNECTION ~ END SECTION DESIGN F SHOWN

NOTES

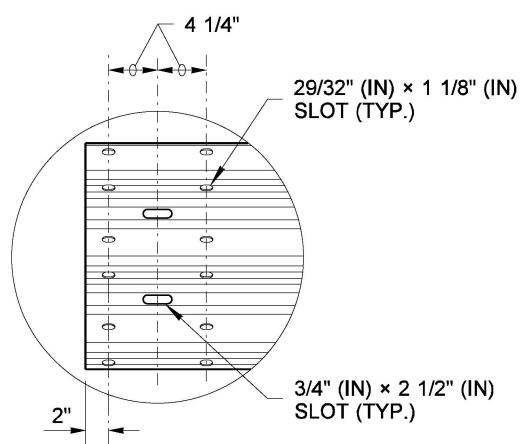
1. This guardrail transition is for connection to a vertical concrete shape, a single slope, or a safety-shape barrier. The toe of the single slope and the safety-shape barrier shall be tapered or the barrier blocked out so that the toe of the barrier does not project beyond the face of the approach guardrail.
2. See **Standard Plan C-1b** for thrie beam wood block detail.
3. See **Standard Plan C-20.10** for typical components (nuts, washers and bolts) at splices.
4. See **Standard Plan C-1b** for W-Beam wood block detail.
5. All rail sections shall be lapped in the direction of traffic.
6. See **Standard Plan C-24.10** for details regarding connection to bridge rail or traffic barrier.
7. See **Standard Plans A-50.10, or A-50.40** for beam guardrail transition grading details at bridge ends.



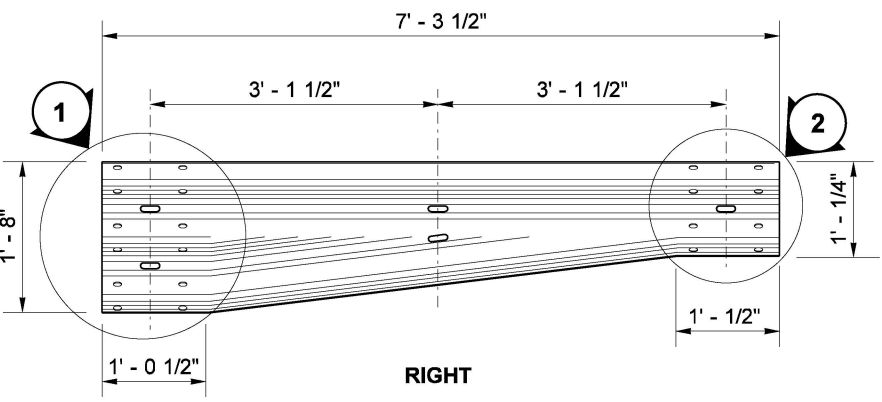
LEFT
(MIRROR OF RIGHT)



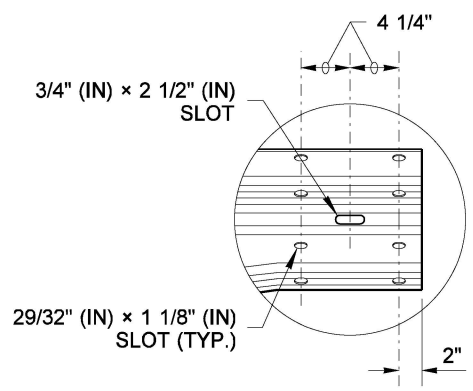
REDUCED LENGTH THRIE-BEAM RAIL ELEMENT 10 GAGE



DETAIL 1



RIGHT
REDUCER ELEMENT TYPE C





DETAIL 2



Aug 17, 2021

**BEAM GUARDRAIL (TYPE 31)
TRANSITION SECTION TYPE 24
(POSTED SPEED 45 MPH AND BELOW)
STANDARD PLAN C-25.30-01**

SHEET 1 OF 1 SHEET

APPROVED FOR PUBLICATION

 Aug 20, 2021
 STATE DESIGN ENGINEER
 Washington State Department of Transportation