

WASHINGTON STATE
DEPARTMENT OF TRANSPORTATION
CHANGE ORDER

DATE: 02/17/22
PAGE 1 of 10

CONTRACT NO: 009157 FEDERAL AID NO:
CONTRACT TITLE: I-5, PORTLAND AVENUE TO PORT OF TACOMA ROAD - SOUT
CHANGE ORDER NO: 27 MCKINLEY/D ST & PACIFIC S.W.

PRIME CONTRACTOR: XXXXXXXXXX GUY F. ATKINSON CONSTRUCTION, LLC.
707 SOUTH GRADY WAY SUITE 500
RENTON WA 98057-3224

(X) Ordered by Engineer under the terms of Section 1-04.4 of the Standard Specifications
() Change proposed by Contractor

ENDORSED BY: <i>Signature on file</i> Brandon Dully (Feb 18, 2022 08:42 PST)	SURETY CONSENT:
CONTRACTOR SIGNATURE Feb 18, 2022	ATTORNEY IN FACT
DATE	DATE

ORIGINAL CONTRACT AMOUNT: 159,875,295.00
 CURRENT CONTRACT AMOUNT: 171,911,313.61
 ESTIMATED NET CHANGE THIS ORDER: 503,867.00
 ESTIMATED CONTRACT TOTAL AFTER CHANGE: 172,415,180.61

Signature Required: (X) Project Engineer (X) State Construction Engineer
 (X) Regional Administrator () Other Agency

<i>Signature on file</i> Thomas Slimak, PE (Feb 25, 2022 12:39 PST)	<i>Signature on file</i> Neal Uhlmeier (Mar 2, 2022 14:02 PST)
PROJECT ENGINEER SIGNATURE Feb 25, 2022	STATE CONSTRUCTION ENGINEER SIGNATURE Mar 2, 2022
DATE	DATE
<i>Signature on file</i>	OTHER APPROVAL WHEN REQUIRED
REGIONAL ADMINISTRATOR SIGNATURE Feb 28, 2022	SIGNATURE _____ DATE _____
DATE	REPRESENTING _____

CONTRACT NO:009157

CHANGE ORDER NO: 27

All work, materials, and measurements to be in accordance with the provisions of the Standard Specifications and Special Provisions for the type of construction involved.

This contract is revised as follows:

Description:

This Change Order adds Work to design and construct maximum extent feasible ADA compliant pedestrian facilities, including the implementation of traffic control, in three quadrants of the McKinley Way and D Street intersection and one area on the Pacific Ave and S 32nd Street intersection.

Materials:

All Material shall be in accordance with the Request for Proposal Chapter 1: General Provisions, Chapter 2: Technical Requirements and the City of Tacoma's standards and requirements.

Construction Requirements:

The Design-Builder shall construct the designated pedestrian facilities for McKinley Way/East D Street intersection in accordance with the following:

- On the east quadrant, repair ADA ramp and all sidewalk from approx. Sta. MCK 17+08 to MCK 18+27. Grind grade breaks to 1/4 inch to flush or bevel to 2:1 at curb and gutter section at ADA ramp.
- On the west quadrant, repair ADA ramp landing.
- On the south quadrant, repair southwest ADA ramp and two sections of sidewalk from approx. Sta. MCK 17+44 (38' RT) to 17+70 and MCK 17+75 to 18+26. Grind grade breaks to 1/4 inch to flush or bevel to 2:1 at curb and gutter section at southwest ADA ramp.
- Released for Construction traffic control plan sheets, TC49-01, TC49-02, TC49-03, TC49-04, TC49-05 and pages 4 through 8 of this Change Order.

The Design-Builder shall construct the designated pedestrian facilities for Pacific Ave and S 32nd Street intersection in accordance with the following:

- On the east quadrant, repair sidewalk around the planter strip.
- Released for Construction traffic control plans sheet TC48-02 and pages 9 and 10 of this Change Order.

Measurement:

No specific unit of measurement will apply to the new lump sum item, "CO#027 McKinley/D St & Pacific S.W.".

Payment:

Payment will be made in accordance with section 1-04.4, for the following new Lump Sum item:

"CO#027 McKinley/D St & Pacific S.W." Lump Sum.

The lump sum payment shall be considered full compensation for all costs and efforts to perform the Work associated with this Change Order.

Contract Time:

No extension of contract time is granted as a result of this change order.

WASHINGTON STATE
 DEPARTMENT OF TRANSPORTATION
 CHANGE ORDER

DATE:02/17/22
 PAGE 3 of 10

CONTRACT NO:009157 CHANGE ORDER NO: 27

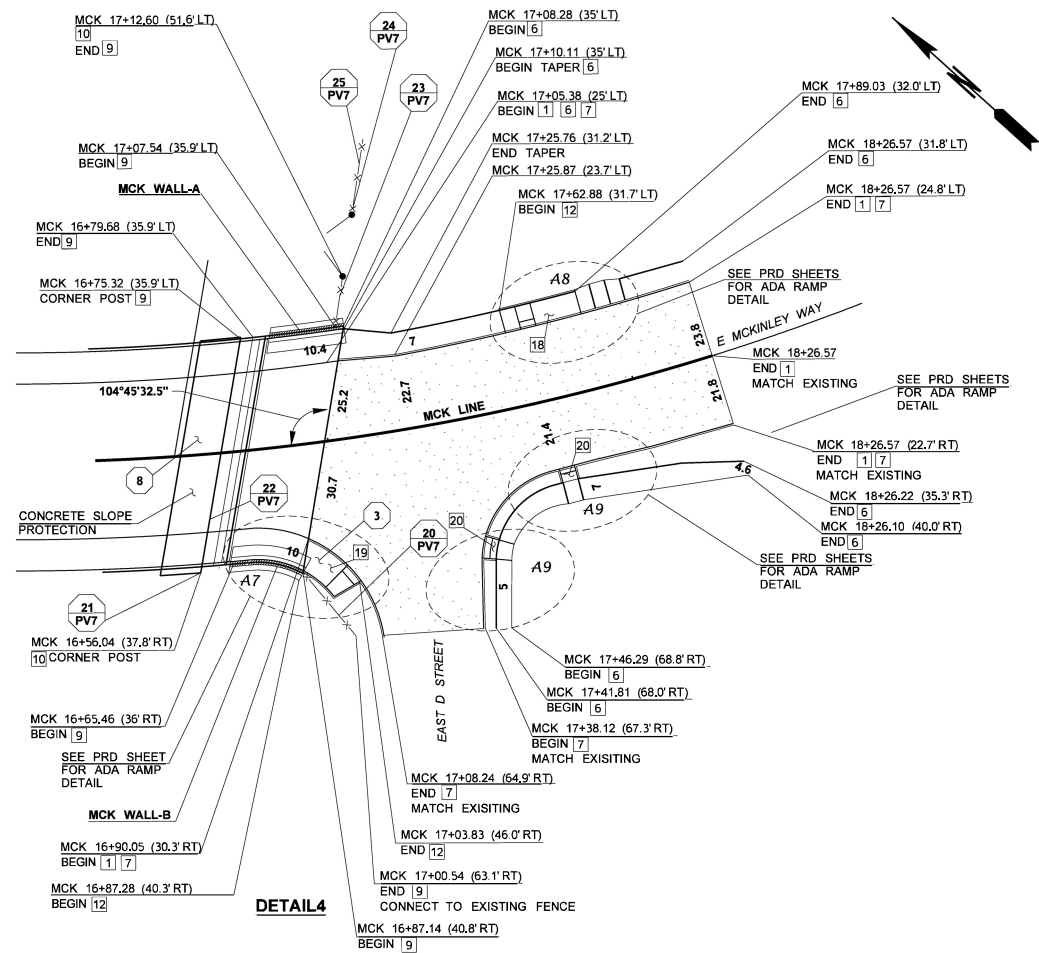
ITEM NO	GROUP NO	STD ITEM	UNIT OF MEASURE	UNIT PRICE	EST QTY CHANGE	EST AMT CHANGE
---------	----------	----------	-----------------	------------	----------------	----------------

ITEM DESCRIPTION:	CO#027 MCKINLEY/D ST & PACIFIC S.W.					
1028 01	L.S.			0.00	0.00	503,867.00

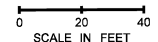
AMOUNT TOTAL

 503,867.00
 =====

CHANGE ORDER NO. 027
 CONTRACT NO. 009157
 PAGE 4 OF 10



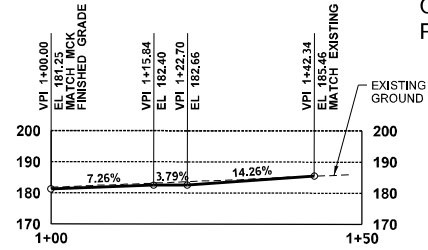
McKINLEY BRIDGE - PAVING DETAIL



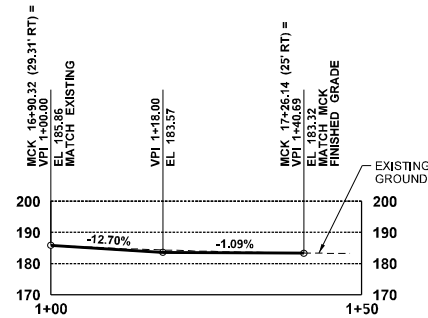
LEGEND	
1 HOT MIX ASPHALT	12 CEMENT CONC. PEDESTRAIN CURB
3 PLANING BITUMINOUS PAVEMENT	13 PRECAST CONC. BARRIER
5 EXTRUDED CURB	14 GUARDRAIL
6 CEMENT CONC. SIDEWALK	18 CEMENT CONC. CURB RAMP TYPE PARALLEL A
7 CEMENT CONC. TRAFFIC CURB AND GUTTER	19 CEMENT CONC. CURB RAMP TYPE PARALLEL B
9 COATED CHAIN LINK FENCE	20 CEMENT CONC. CURB RAMP TYPE PERPENDICULAR B
10 COATED CHAIN LINK GATE	# QUANTITY TABULATION NOTE
11 CONCRETE BARRIER	A# CORRESPONDING ADA RAMP DETAILS

FILE NAME PW:\Users\Fife PEO\Nicholas Wood\9157\CO #027 McKinley and Pac S. Side S-W0689-A_C8607_SH_PVD_002-A.dgn				FED.AID PROJ.NO.				I-5 M ST TO PORTLAND AVE - HOV	PLAN REF NO PVD2
TIME 3:17:56 PM	DATE 12/21/2021	REGION NO. 10	STATE WASH	LOCATION NO. XL3497	DATE 2/10/22				
PLOTTED BY woodn	DESIGNED BY N. WOOD	ENTERED BY N. WOOD	CHECKED BY L. DUBOIS	PROJ. ENGR. G. SANJOY	REGIONAL ADML. J. WYNANDS	REVISION	DATE	BY	PAVING DETAILS

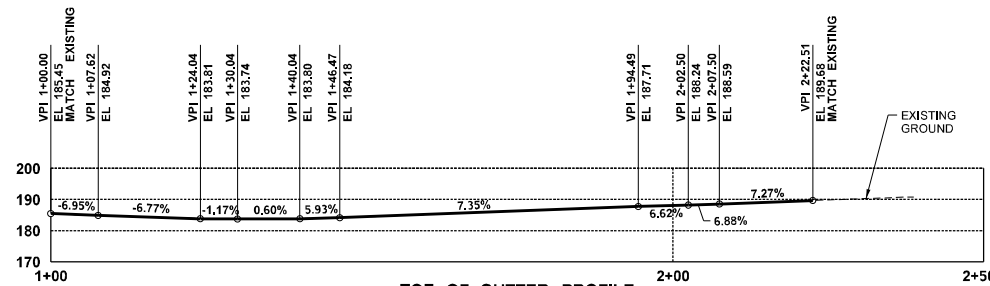
CHANGE ORDER NO. 027
 CONTRACT NO. 009157
 PAGE 5 OF 10



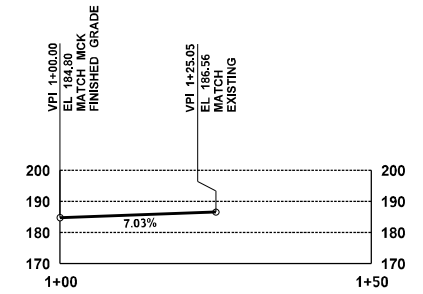
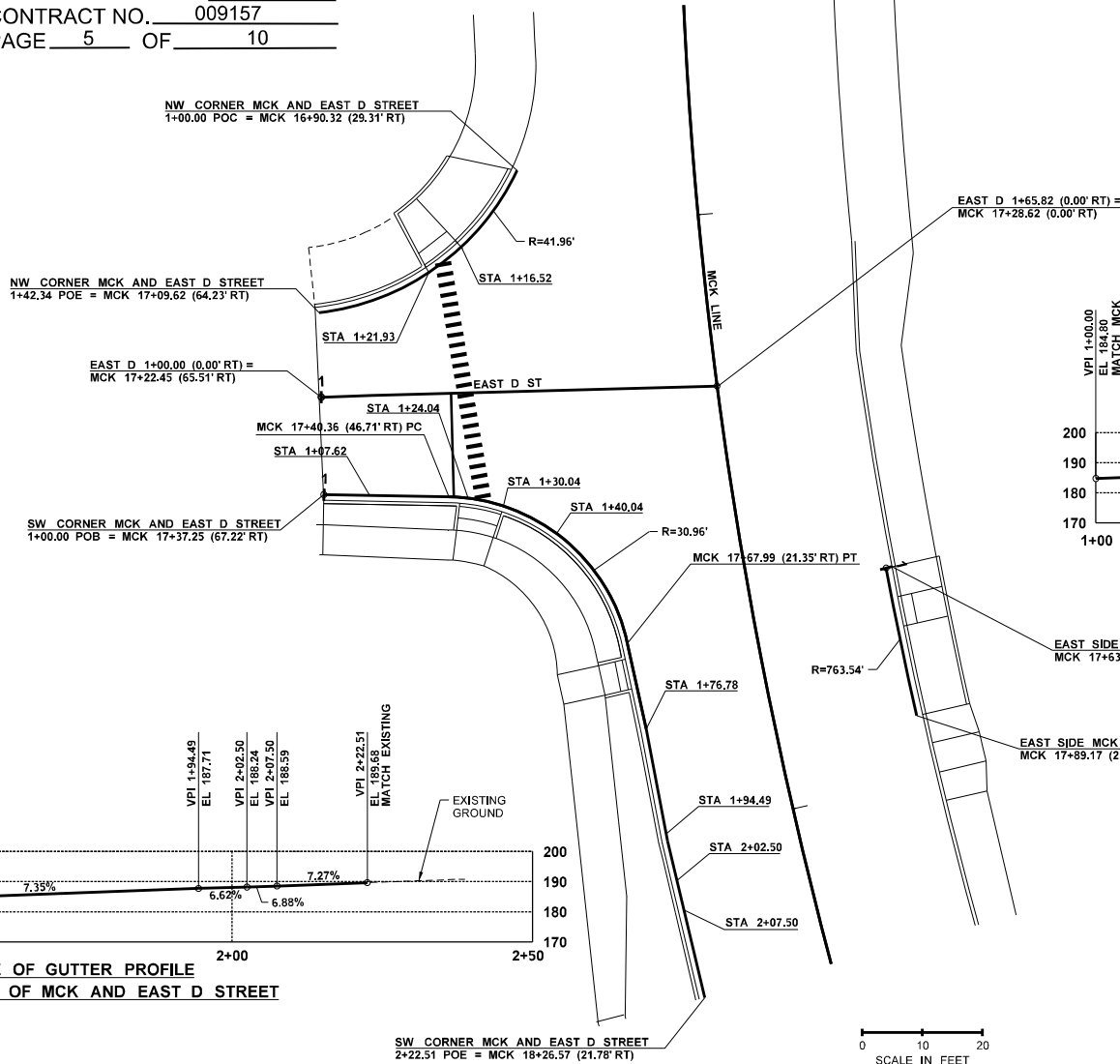
**TOE OF GUTTER PROFILE
 NW CORNER OF MCK AND EAST D STREET**



EAST D STREET PROFILE



**TOE OF GUTTER PROFILE
 SW CORNER OF MCK AND EAST D STREET**



**TOE OF GUTTER PROFILE
 EAST SIDE OF MCK**

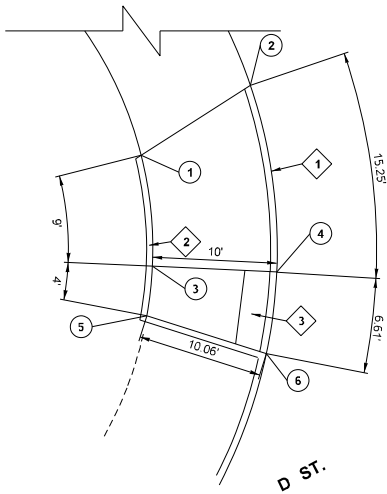
EAST SIDE MCK 1+00.00 POC =
 MCK 17+63.32 (23.17' LT)

EAST SIDE MCK 1+28.00 POE =
 MCK 17+89.17 (23.44' LT)

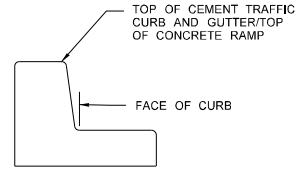
NOTES:
 1. SEE PRD "ADA RAMP DETAILS"
 FOR MORE INFORMATION ON
 RAMP CONSTRUCTION.

FILE NAME: PW:\Users\Fife PEO\Nicholas Wood\9157\CO #027 McKinley and Pac S. Side S-W0692-A-C8607 SH PVD 005-A.dgn		FED.AID PROJ.NO.				I-5 M ST TO PORTLAND AVE - HOV	PLAN REF NO PVD5
TIME: 3:32:56 PM	DATE: 12/21/2021	REG. NO.: 10	STATE: WASH				
PLOTTED BY: woodn	DESIGNED BY: N. WOOD	JOB NUMBER: 12C501	CONTRACT NO.	DATE: 2/10/22	DATE:	PAVING DETAILS	SHEET 692 OF 1763 SHEETS
CHECKED BY: L. DUBOIS	PROJ. ENGR: G. SANJOY	LOCATION NO: XL3497	DATE:	DATE:			
REGIONAL ADM. J. WYNANDS	REVISION	DATE	BY				

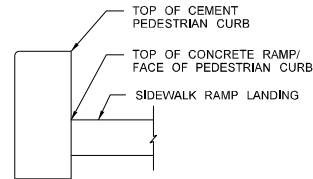
CHANGE ORDER NO. 027
 CONTRACT NO. 009157
 PAGE 6 OF 10



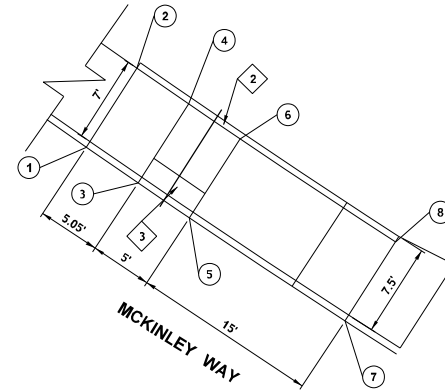
MCKINLEY WAY
 D ST.



TYPICAL CEMENT CONCRETE TRAFFIC CURB AND GUTTER (NOT TO SCALE)



TYPICAL CEMENT CONCRETE PEDESTRIAN CURB (NOT TO SCALE)



MCKINLEY WAY

DETAIL A7

DETAIL A8

FINISH GRADE ELEVATION TABLE

LOCATION	TOP OF CEMENT TRAFFIC CURB AND GUTTER	FACE OF CURB	TOP OF CEMENT CONC. PEDESTRIAN CURB	TOP OF CONCRETE RAMP/ CONCRETE SIDEWALK	STATION	OFFSET
①	----	----	182.11	182.11	MCK 16+87.28	40.27 (RT)
②	181.72	181.22	----	----	MCK 16+90.05	30.26 (RT)
③	----	----	183.40	182.90	MCK 16+93.46	46.41 (RT)
④	182.76	182.75	----	----	MCK 17+00.92	40.81 (RT)
⑤	----	----	183.65	183.15	MCK 16+95.58	49.71 (RT)
⑥	183.59	183.09	----	----	MCK 17+04.30	45.83 (RT)

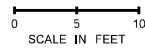
LOCATION	TOP OF CEMENT CONC. TRAFFIC CURB AND GUTTER	FACE OF CURB	TOP OF CEMENT CONC. PEDESTRIAN CURB	TOP OF RAMP/ CONCRETE SIDEWALK	STATION	OFFSET
①	185.27	184.77	----	----	MCK 17+63.27	24.17 (LT)
②	----	----	185.38	185.38	MCK 17+62.88	31.66 (LT)
③	185.12	185.12	----	----	MCK 17+68.49	24.22 (LT)
④	----	----	185.73	185.23	MCK 17+68.15	31.76 (LT)
⑤	185.45	185.45	----	----	MCK 17+73.66	24.28 (LT)
⑥	----	----	186.06	185.56	MCK 17+73.37	31.82 (LT)
⑦	187.03	186.53	----	----	MCK 17+89.16	24.44 (LT)
⑧	----	----	187.15	187.15	MCK 17+89.03	31.98 (LT)

LEGEND

- ① CEMENT CONCRETE TRAFFIC CURB AND GUTTER (SEE STANDARD PLAN F-10.12-02)
- ② CEMENT CONCRETE PEDESTRIAN CURB (SEE STANDARD PLAN F-10.12-02)
- ③ DETECTABLE WARNING PATTERN DETAIL (SEE STANDARD PLAN F-45.10-01)

NOTES:

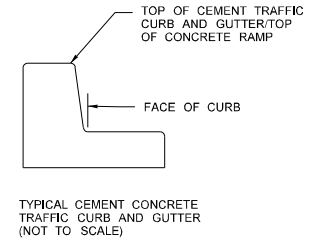
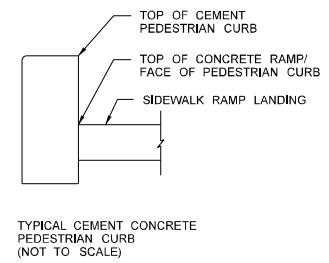
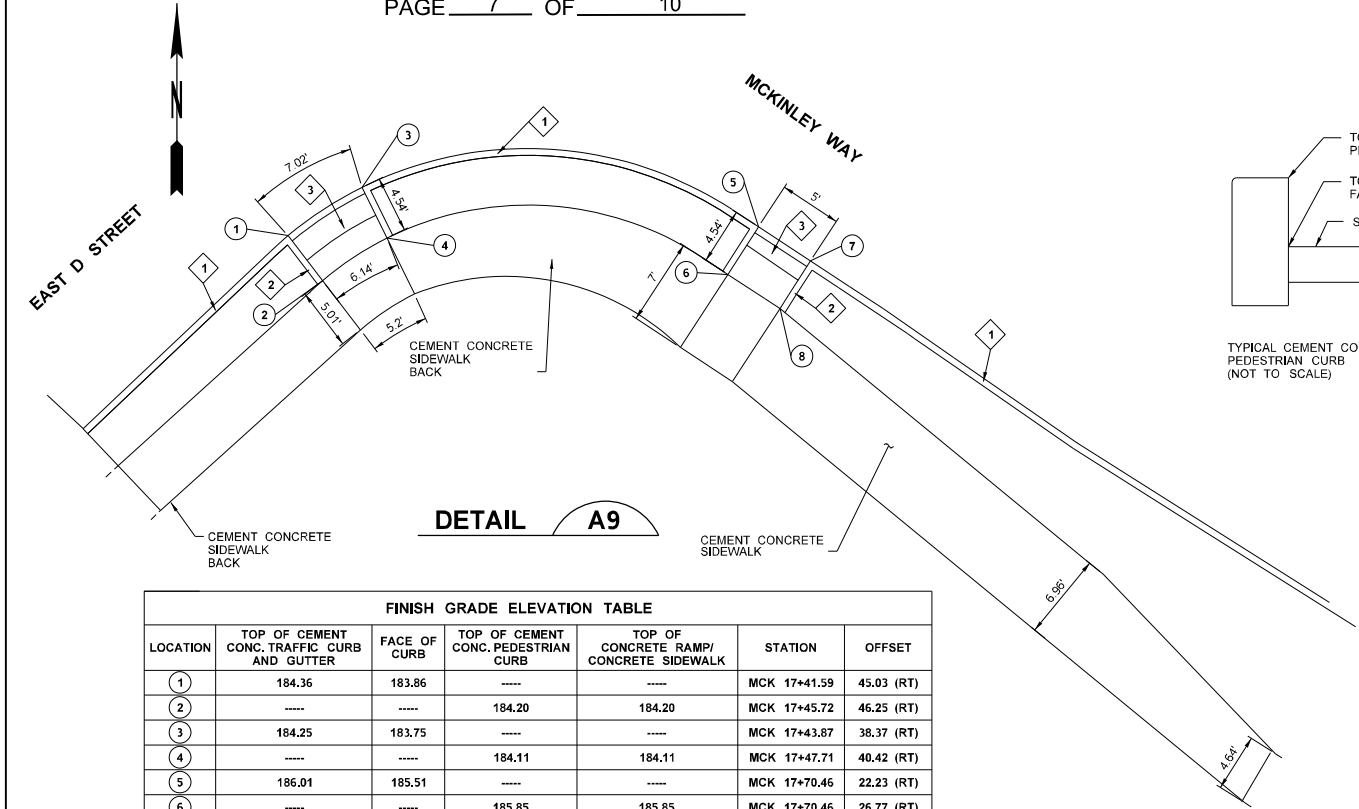
1. CEMENT CONCRETE SIDEWALK RAMP WIDTHS ARE MEASURED FROM FACE OF TRAFFIC CURB TO FACE OF PEDESTRIAN CURB.
2. STATION-OFFSETS AND RADII ARE TO THE FACE OF TRAFFIC CURB
3. TOP OF CEMENT TRAFFIC CURB LINE IS NOT SHOWN ON THE DETAIL DRAWINGS. SEE TYPICAL SECTION FOR CLARITY, THIS SHEET.



SCALE IN FEET

FILE NAME	PW:\Users\Fife\PEO\Nicholas.Wood\19157\CO #027 McKinley and Pac S. Side S-W0716-A_C8607_SH PRD_004-A.dgn			REGION NO.	10	STATE	WASH	FED.AID PROJ.NO.				I-5 M ST TO PORTLAND AVE - HOV	PLAN REF NO.	PRD4
TIME	3:38:57 PM			JOB NUMBER	12C501	CONTRACT NO.		LOCATION NO.	XL3497				SHEET	716
DATE	12/21/2021											OF	1763	
PLOTTED BY	woodn												SHEETS	
DESIGNED BY	N. WOOD													
ENTERED BY	N. WOOD													
CHECKED BY	L. DUBOIS													
PROJ. ENGR.	G. SANOY													
REGIONAL ADM.	J. WYNANDS			REVISION		DATE		BY						

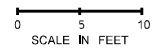
CHANGE ORDER NO. 027
 CONTRACT NO. 009157
 PAGE 7 OF 10



FINISH GRADE ELEVATION TABLE						
LOCATION	TOP OF CEMENT CONC. TRAFFIC CURB AND GUTTER	FACE OF CURB	TOP OF CEMENT CONC. PEDESTRIAN CURB	TOP OF CONCRETE RAMP/ CONCRETE SIDEWALK	STATION	OFFSET
①	184.36	183.86	-----	-----	MCK 17+41.59	45.03 (RT)
②	-----	-----	184.20	184.20	MCK 17+45.72	46.25 (RT)
③	184.25	183.75	-----	-----	MCK 17+43.87	38.37 (RT)
④	-----	-----	184.11	184.11	MCK 17+47.71	40.42 (RT)
⑤	186.01	185.51	-----	-----	MCK 17+70.46	22.23 (RT)
⑥	-----	-----	185.85	185.85	MCK 17+70.46	26.77 (RT)
⑦	186.38	185.88	-----	-----	MCK 17+75.32	22.11 (RT)
⑧	-----	-----	185.95	185.95	MCK 17+75.47	26.65 (RT)

LEGEND	
①	CEMENT CONCRETE TRAFFIC CURB AND GUTTER (SEE STANDARD PLAN F-10,12-02)
②	CEMENT CONCRETE PEDESTRIAN CURB (SEE STANDARD PLAN F-10,12-02)
③	DETECTABLE WARNING PATTERN DETAIL (SEE STANDARD PLAN F-45,10-00)

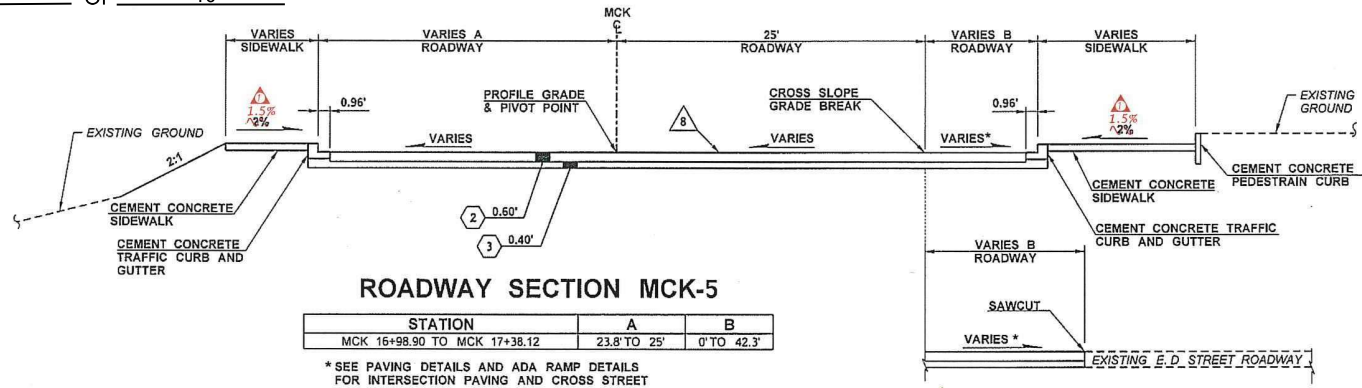
- NOTES:**
- CEMENT CONCRETE SIDEWALK RAMP WIDTHS ARE MEASURED FROM FACE OF TRAFFIC CURB TO FACE OF PEDESTRIAN CURB.
 - STATION-OFFSETS AND RADII ARE TO THE FACE OF TRAFFIC CURB
 - TOP OF CEMENT TRAFFIC CURB LINE IS NOT SHOWN ON THE DETAIL DRAWINGS, SEE TYPICAL SECTION FOR CLARITY, THIS SHEET.



FILE NAME	PW:\Users\Fife_PEO\Nicholas Wood\9157\CO #027 McKinley and Pac S. Side S-W0717-A-C8607 SH PRD 005-A.dgn					FED.AID PROJ.NO.				I-5 M ST TO PORTLAND AVE - HOV	PLAN REF NO
TIME	3:41:35 PM						PRD5				
DATE	12/21/2021										SHEET
PLOTTED BY	woodn										717
DESIGNED BY	N. WOOD										OF
ENTERED BY	N. WOOD										1763
CHECKED BY	L. DUBOIS										SHEETS
PROJ. ENGR.	G. SANJOY										
REGIONAL ADM.	J. WYNANDS	REVISION		DATE	BY	LOCATION NO.	XL3497				

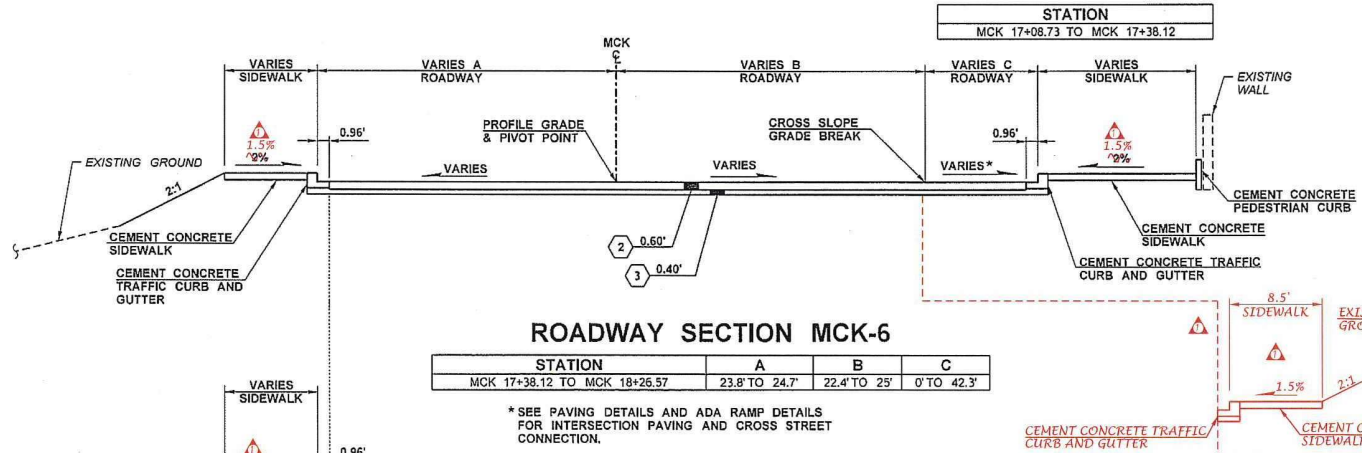
CHANGE ORDER NO. 027
 CONTRACT NO. 009157
 PAGE 8 OF 10

LEGEND	
1	CEMENT CONC. PAVEMENT
2	HMA CL. 1/2 IN.
3	CRUSHED SURFACING BASE COURSE
4	HMA FOR PRELEVELING CL. 1/2 IN.
5	PLANING BITUMINOUS PAVEMENT
6	PLANING CEMENT CONC. PAVEMENT
7	MODIFIED CONC. OVERLAY
8	QUARRY SPALLS



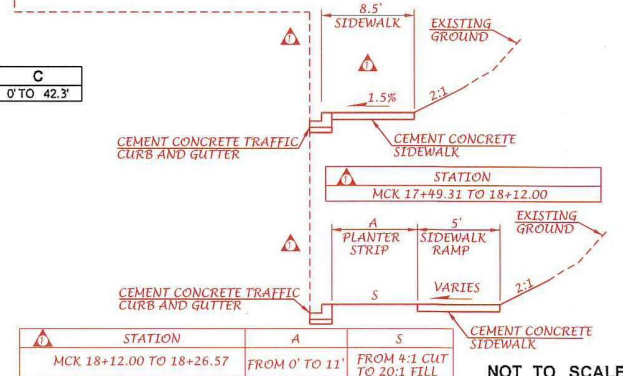
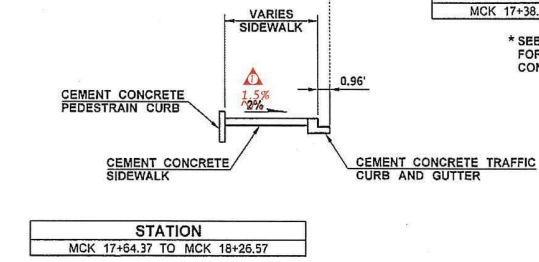
GENERAL NOTES:

- FOR VARIABLE WIDTH DIMENSIONS, SEE PAVING AND PAVING JOINT PLANS, UNLESS OTHERWISE NOTED. VARIABLE WIDTHS REPRESENT MINIMUM AND MAXIMUM VALUES WITHIN STATION RANGES SHOWN.
- ALL SURFACING AND PAVEMENT DEPTHS SHOWN ARE FINAL COMPACTED DEPTHS. INDIVIDUAL LAYERS SHALL NOT EXCEED MAXIMUM NOMINAL COMPACTED DEPTHS DEFINED IN THE STANDARD SPECIFICATIONS.
- SEE SUPERELEVATION DIAGRAMS ON ROADWAY PROFILE SHEETS FOR VARIABLE CROSS SLOPE VALUES.
- SEE ROADWAY SECTION DETAILS FOR ADDITIONAL SHOULDER INFORMATION.
- SEE DRAINAGE PLANS FOR LOCATIONS OF MEDIA FILTER DRAINS ALONG FILL SLOPES.
- ROADWAY SECTIONS REFLECT FUTURE PROJECT CONFIGURATIONS. SEE PAVEMENT MARKING PLANS FOR THIS PROJECT'S CHANNELIZATION. SEE PAVING PLANS FOR ADDITIONAL INFORMATION ON THIS PROJECT'S BARRIER TYPE AND LOCATION.
- FOR BARRIER RETAINING SOIL, SEE "CONCRETE BARRIER UNDERDRAIN" DETAIL IN DRAINAGE DETAILS.
- FOR SIDEWALK PLACEMENT, SEE PAVING DETAILS AND ADA RAMP DETAILS.



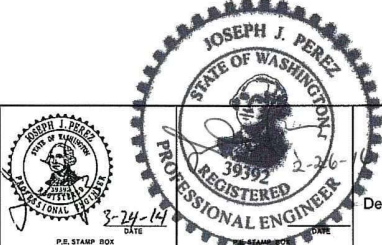
CONSTRUCTION NOTES:

- SEE PAVING DETAILS FOR SKEW LOCATION.



FILE NAME: PW1_C6807CAD_SheetsFiles\0080_C6807_SH_RS_41_R.dgn
 TIME: 1:38:50 PM
 DATE: 2/17/2016

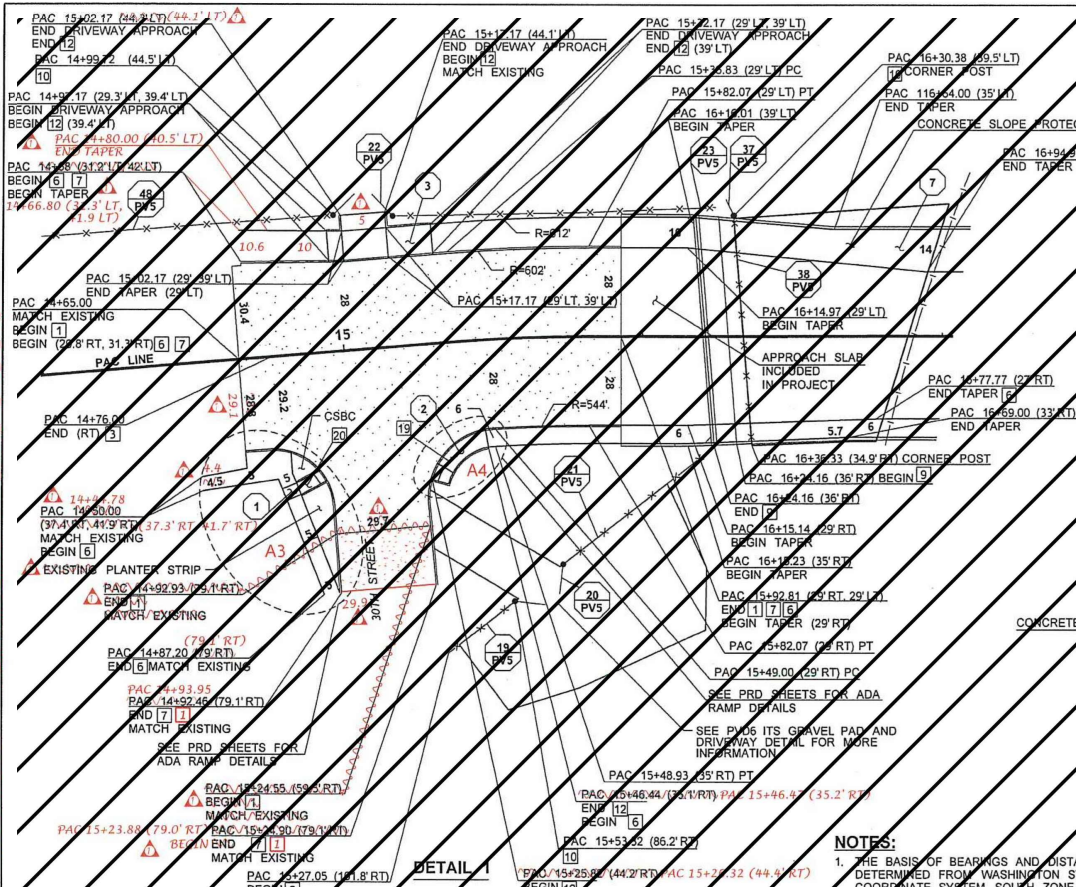
FILE NAME	PW1_XL3497PS&E Sheets\Roadway Sections\IP3497_SH_RS_41.dgn
TIME	1:03:47 PM
DATE	3/24/2014
PLOTTED BY	willisd
DESIGNED BY	D. WASHINGTON
ENTERED BY	S. WILLIAMSON
CHECKED BY	B. REGISTER
PROJ. ENGR.	J. PEREZ
REGIONAL ADM.	K. DAYTON
REVISION	CO-139 ADA RAMPS AT MCKINLEY WAY 10/28/15 GM
DATE	10/28/15
BY	GM
REGION NO.	10
STATE	WASH
FED.AID PROJ.NO.	12C501
LOCATION NO.	XL3497



Washington State
 Department of Transportation

I-5 M ST TO PORTLAND AVE - HOV	PLAN REF NO RS41
ROADWAY SECTIONS - MCK	SHEET 80 OF 1763 SHEETS

DATE: 10/28/2015
 TIME: 3:59:32 PM
 P:\1_C8607\CAD1_SheetFiles\0688_C8607_SH_PVD_01_R.dgn
 PLOTTED BY: makhlog



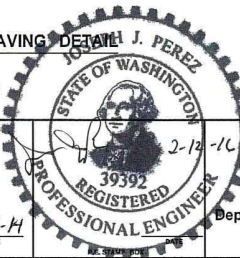
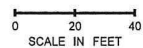
LEGEND

[1] HOT MIX ASPHALT	[12] CEMENT CONC. PEDESTRAIN CURB
[3] PLANING BITUMINOUS PAVEMENT	[13] PRECAST CONC. BARRIER
[5] EXTRUDED CURB	[14] GUARDRAIL
[6] CEMENT CONC. SIDEWALK	[18] CEMENT CONC. CURB RAMP TYPE PARALLEL A
[7] CEMENT CONC. TRAFFIC CURB AND GUTTER	[19] CEMENT CONC. CURB RAMP TYPE PARALLEL B
[9] COATED CHAIN LINK FENCE	[20] CEMENT CONC. CURB RAMP TYPE PERPENDICULAR B
[10] COATED CHAIN LINK GATE	
[11] CONCRETE BARRIER	
# PVX	# QUANTITY TABULATION NOTE
A#	CORRESPONDING ADA RAMP DETAILS

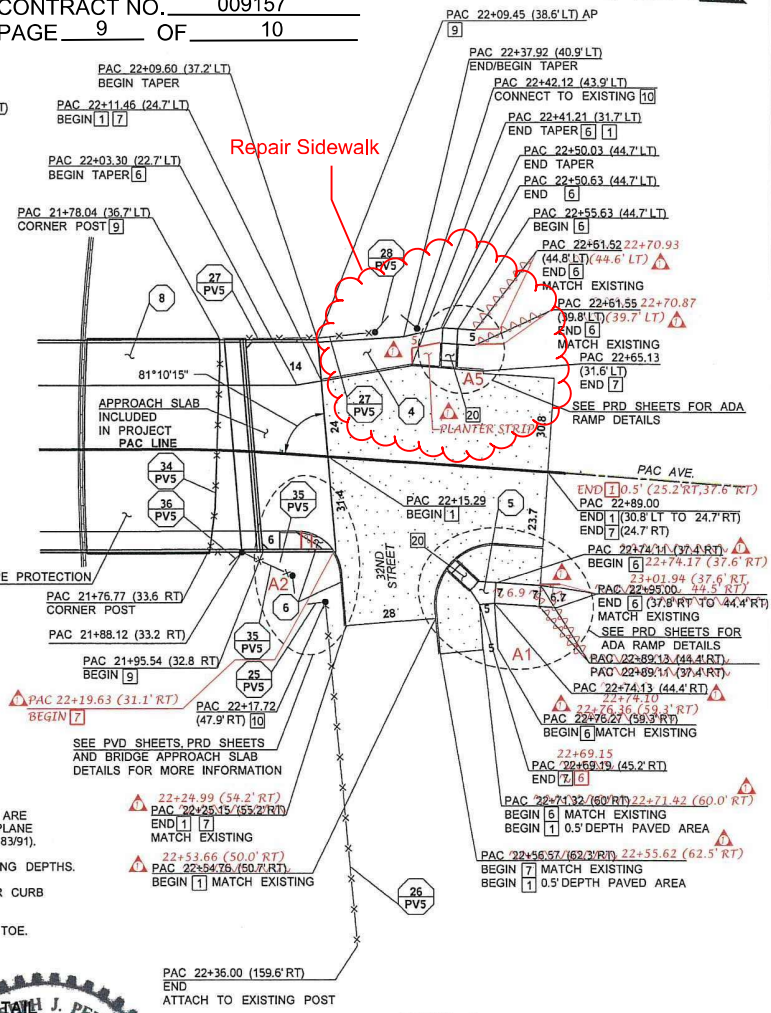
NOTES:

1. THE BASIS OF BEARINGS AND DISTANCES ARE DETERMINED FROM WASHINGTON STATE PLANE COORDINATE SYSTEM SOUTH ZONE (NAD 83/91).
2. REFER TO ROADWAY SECTIONS FOR PAVING DEPTHS.
3. SEE PAVING AND ADA RAMP DETAILS FOR CURB AND SIDEWALK INFORMATION.
4. PAVEMENT WIDTHS ARE TO THE GUTTER TOE.
5. ALL DIMENSIONS ARE IN FEET UNLESS OTHERWISE NOTED.

PACIFIC AVE BRIDGE - PAVING DETAILS



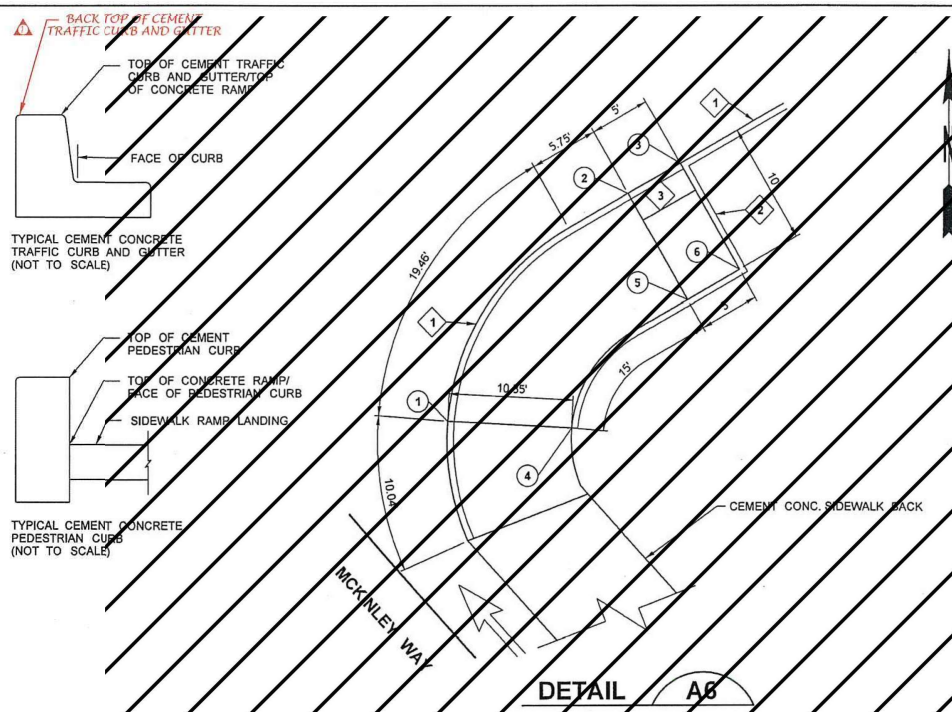
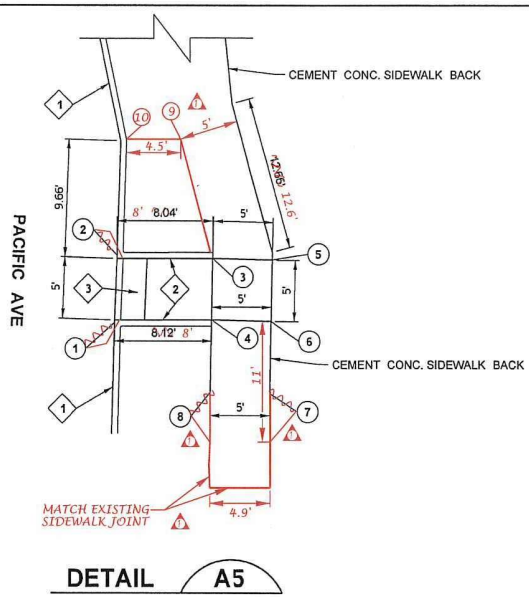
CHANGE ORDER NO. 027
 CONTRACT NO. 009157
 PAGE 9 OF 10



DETAIL 2

FILE NAME: P:\1_C8607\PS&E Sheets\Paving Details\IP3497_DE_PV_001.dgn	REGION: 10	STATE: WASH	FED.AID PROJ.NO.			I-5 M ST TO PORTLAND AVE - HOV	PLAN REF NO: PVD1
TIME: 8:13:24 AM	JOB NUMBER: 12C501	CONTRACT NO.:	LOCATION NO.: XL3497				
DATE: 3/4/2014	DESIGNED BY: J. MARTZ	ENTERED BY: A. SANCHEZ	DATE: 09/21/15	DATE: 3-17-14	PAVING DETAILS		
PLOTTED BY: makhlog CHECKED BY: B. REGISTER PROJ. ENGR.: J. PEREZ REGIONAL ADM.: K. DAYTON	CO - 110 ADA RAMP AT PACIFIC AVENUE		REVISION:	DATE:			

PWA_C8607CAD1_SheetFile\0715_C8607_SH_PRD_03_R.dgn
 TIME: 6:40:26 AM
 DATE: 10/23/2015



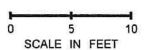
FINISH GRADE ELEVATION TABLE						
LOCATION	TOP OF CEMENT CONC. TRAFFIC CURB AND GUTTER	FACE OF CURB	TOP OF CEMENT CONC. PEDESTRIAN CURB	TOP OF CONCRETE RAMP/ CONCRETE SIDEWALK	STATION	OFFSET
1	243.42	242.92	243.42	242.92	PAC 22+55.86	31.60' (LT) 32.19' (LT)
2	243.34	242.83	243.33	242.83	PAC 22+50.86	31.65' (LT) 32.20' (LT)
3	---	---	243.42	243.42	PAC 22+50.64	39.68' (LT)
4	---	---	243.49	243.49	PAC 22+55.64	39.71' (LT)
5	---	---	---	243.50, 243.49	PAC 22+50.63	44.68' (LT)
6	---	---	---	243.58, 243.56	PAC 22+55.63	44.69' (LT) 44.71' (LT)
7	---	---	---	243.90, 244.11	PAC 22+61.55	44.70' (LT) 22+66.61 (44.68 LT)
8	---	---	---	243.79, 244.04	PAC 22+61.55	39.75' (LT) 22+66.60 (39.68 LT)
9	---	---	---	242.81	PAC 22+41.21	36.72' (LT)
10	242.72	---	---	242.72	PAC 22+41.21	32.22' (LT)

FINISH GRADE ELEVATION TABLE						
LOCATION	TOP OF CEMENT CONC. TRAFFIC CURB AND GUTTER	FACE OF CURB	TOP OF CEMENT CONC. PEDESTRIAN CURB	TOP OF CONCRETE RAMP/ CONCRETE SIDEWALK	STATION	OFFSET
1	155.50	155.00	---	---	MCK 13+42.08	30.18' (LT)
2	152.66	152.66	---	---	MCK 13+35.56	53.95' (LT)
3	152.57	152.57	---	---	MCK 13+37.59	58.58' (LT)
4	---	---	---	155.70	MCK 13+50.23	37.63' (LT)
5	---	---	---	152.86	MCK 13+48.60	51.80' (LT)
6	---	---	---	152.76	MCK 13+49.89	56.69' (LT)

LEGEND	
1	CEMENT CONCRETE TRAFFIC CURB AND GUTTER (SEE STANDARD PLAN F-10.12-02)
2	CEMENT CONCRETE PEDESTRIAN CURB (SEE STANDARD PLAN F-10.12-02)
3	DETECTABLE WARNING PATTERN DETAIL (SEE STANDARD PLAN F-45.10-01)

CHANGE ORDER NO. 027
 CONTRACT NO. 009157
 PAGE 10 OF 10

- NOTES:**
- CEMENT CONCRETE SIDEWALK RAMP WIDTHS ARE MEASURED FROM FACE OF TRAFFIC CURB TO FACE OF PEDESTRIAN CURB.
 - STATION OFFSETS AND RADII ARE TO THE FACE OF TRAFFIC CURB
 - TOP OF CEMENT TRAFFIC CURB LINE IS NOT SHOWN ON THE DETAIL DRAWINGS. SEE TYPICAL SECTION FOR CLARITY, THIS SHEET.



FILE NAME: PWA_XL3497IPS&E Sheets\ADA Ramp Details\13497_DE_PV_Ramp003.dgn	REGION NO.: 10	STATE: WASH	FED.AID PROJ.NO.:			I-5 M ST TO PORTLAND AVE - HOV ADA RAMP DETAILS	PLAN REF NO. PRD3 SHEET 715 OF 1763 SHEETS
TIME: 1:44:06 PM	JOB NUMBER: 12C501	CONTRACT NO.:	LOCATION NO.: XL3497				
DATE: 3/14/2014	DESIGNED BY: J. MARTZ	DATE: 10/14/13	BY: GM	REVISION: CO - 110 ADA RAMP AT PACIFIC AVENUE			
PLOTTED BY: willisd	ENTERED BY: J. NEUGEBAUER-REX	PROJ. ENGR.: J. PEREZ	REGIONAL ADM.: K. DAYTON	Washington State Department of Transportation			