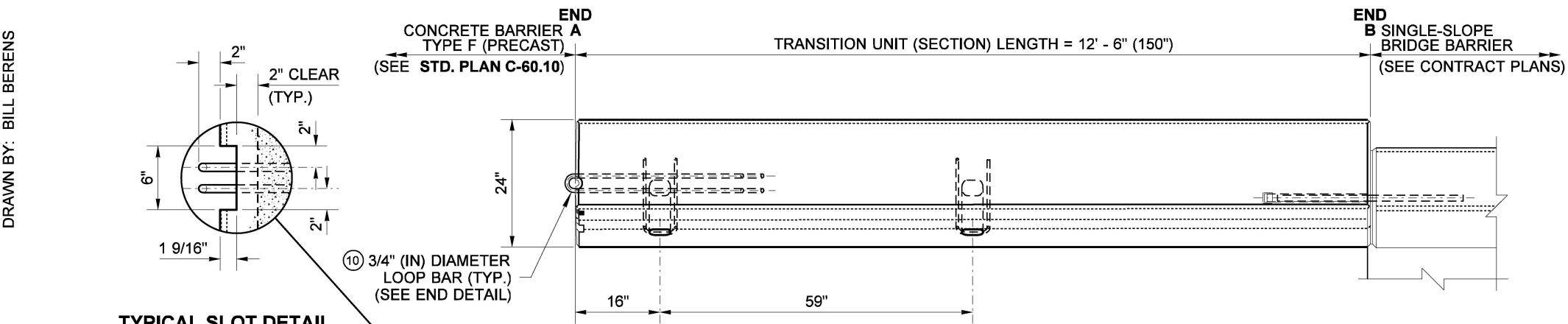
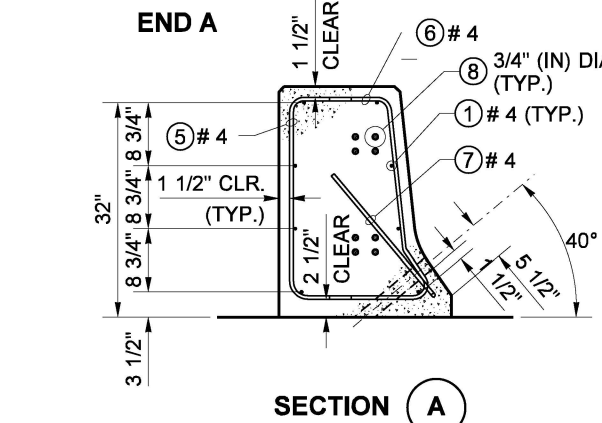
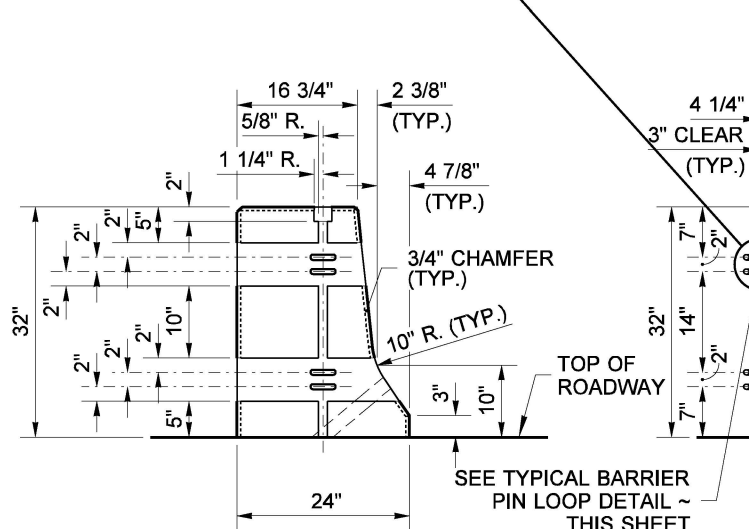


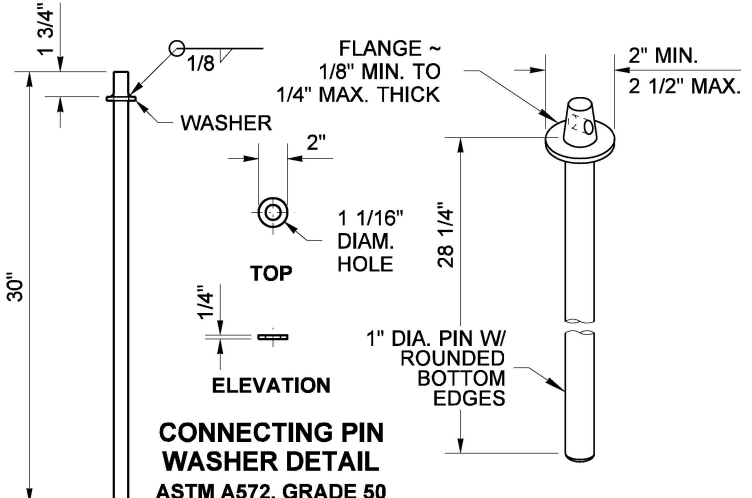
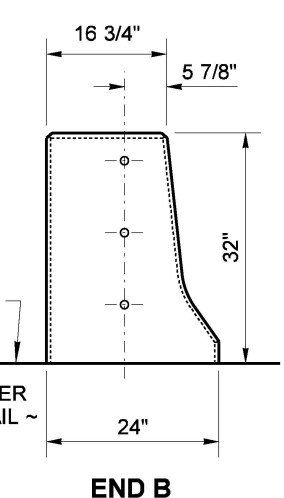
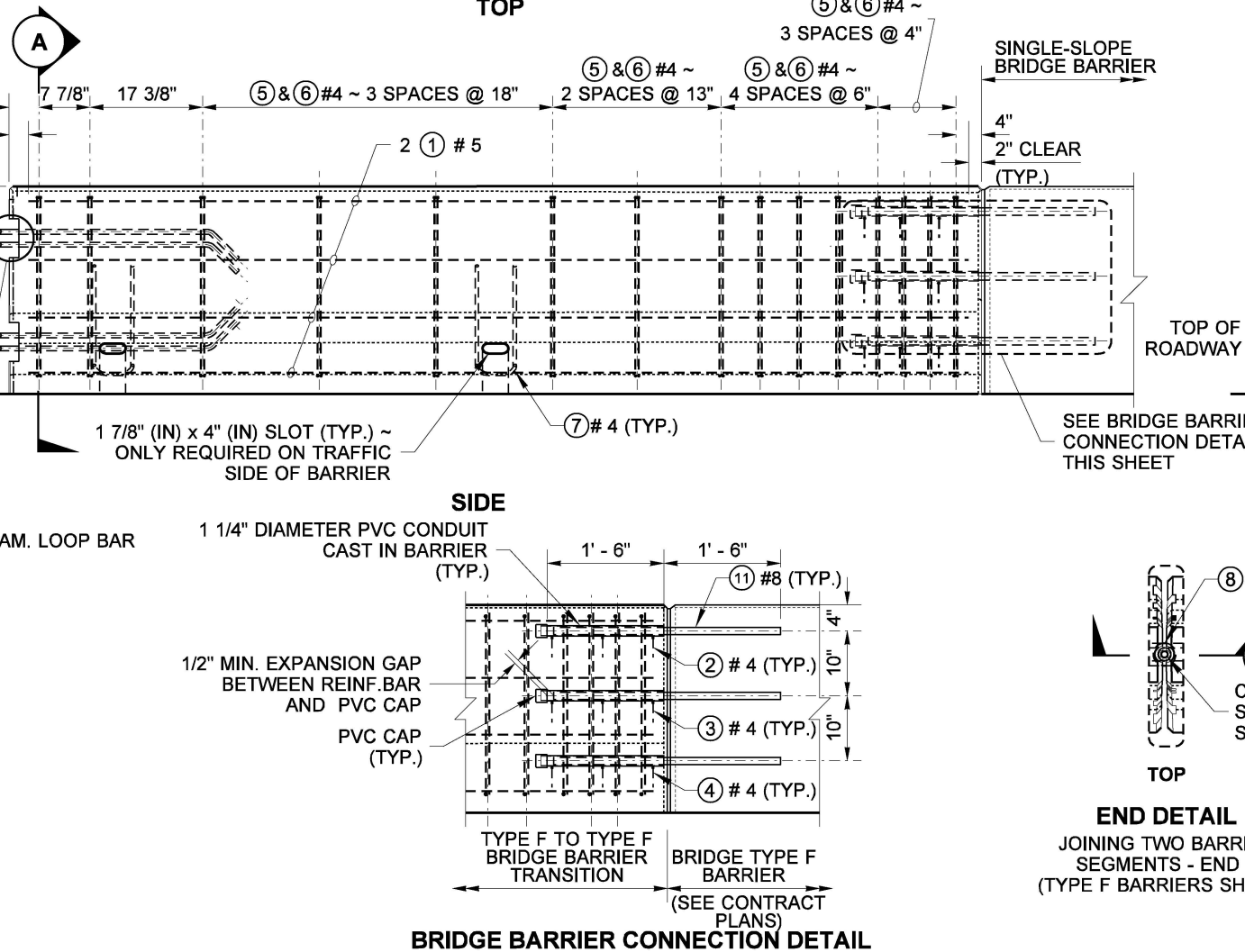
DRAWN BY: BILL BERENS



TYPICAL SLOT DETAIL



NOTE:
STEEL WELDED WIRE REINFORCEMENT DEFORMED FOR CONCRETE MAY BE SUBSTITUTED FOR REINFORCING STEEL IN ACCORDANCE WITH **STANDARD SPECIFICATION, SECTION 6-10.3**



CONNECTING PIN ASSEMBLY DETAIL
1" DIAMETER PER **ASTM A449**
HOT DIP GALVANIZE AFTER FABRICATION PER **ASTM F2329**

WELDED WASHER PIN SEE NOTE 5

FORGED HEAD PIN (ALTERNATIVE)



Aug 17, 2021

TYPE F TO TYPE F BRIDGE BARRIER TRANSITION (CAST-IN-PLACE)
STANDARD PLAN C-60.60-00

SHEET 1 OF 1 SHEET

APPROVED FOR PUBLICATION
Aug 17, 2021
STATE DESIGN ENGINEER
Washington State Department of Transportation

